

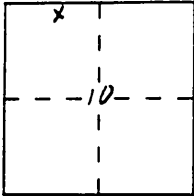
CORNER RECORD

Document Number 97-219

City of RIVERSIDE County of RIVERSIDE, California

Brief Legal Description SELY. LINE LOT 4 M.B. 71/89,90. IN N.W. 1/4 SEC. 10, T. 35., R. 5W. S.B.M.  
(Include: Sec., Twp., Rge., and Meridian or Rancho)

W.O. 4632 OJEDA E.P.F.B. 124/21



CORNER TYPE

COORDINATES (Optional)

Government Corner  Control   
Meander  Property   
Rancho  Other   
Date of Survey 5/8/97

N. \_\_\_\_\_  
E. \_\_\_\_\_  
Zone \_\_\_\_\_ Datum \_\_\_\_\_  
Elev. \_\_\_\_\_

Corner — Left as found  Found and tagged  Established  Reestablished  Rebuilt

Identification and type of corner found: Evidence used to identify or procedure used to establish or reestablish the corner:

SEE SKETCH ON REVERSE SIDE.

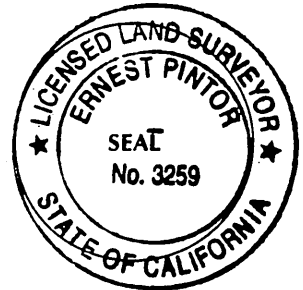
A description of the physical condition of the monument as found and as set or reset:

SEE SKETCH ON REVERSE SIDE

SURVEYOR'S STATEMENT

This Corner Record was prepared by me or under my direction in conformance with the Land Surveyors' Act on MAY 15, 1997.

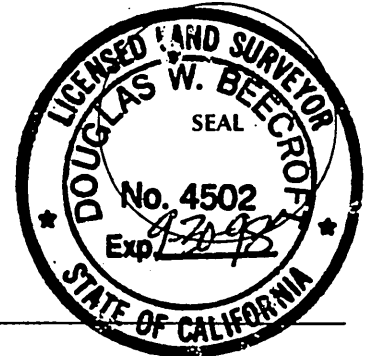
Signed Ernest Pintor L.S. or R.C.E. Number 3259  
EXPIRATION DATE: 6/30/00



COUNTY SURVEYOR'S STATEMENT

This Corner Record was received May 15 1997 and examined

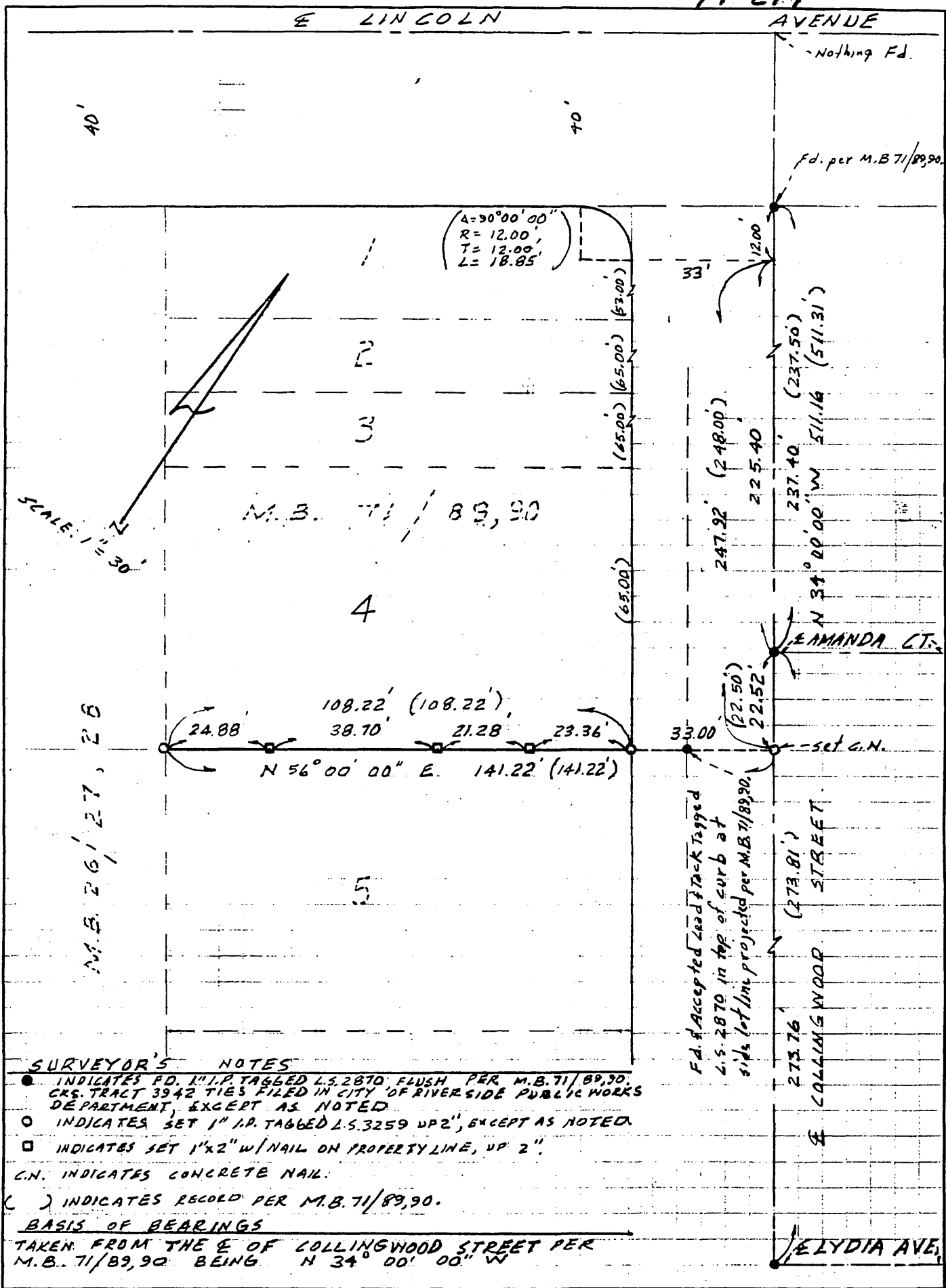
and filed May 24 1997.  
Signed D. W. Beecroft Title Senior L.S.



County Surveyor's Comment \_\_\_\_\_

THE FILING OF THIS CORNER RECORD  
DOES NOT RELIEVE THE SURVEYOR  
FROM ANY RESPONSIBILITY OF THE  
FILING OF A RECORD OF SURVEY

97-219



**SURVEYOR'S NOTES**

- INDICATES PD. 1" I.P. TAGGED L.S. 2870 FLUSH PER M.B. 71/89,90. CKS. TRACT 3942 TIES FILED IN CITY OF RIVERSIDE PUBLIC WORKS DEPARTMENT, EXCEPT AS NOTED.
- INDICATES SET 1" I.P. TAGGED L.S. 3259 UP 2", EXCEPT AS NOTED.
- INDICATES SET 1"x2" W/NAIL ON PROPERTY LINE, UP 2".
- C.N. INDICATES CONCRETE NAIL.
- ( ) INDICATES RECORD PER M.B. 71/89,90.

**BASIS OF BEARINGS**

TAKEN FROM THE E OF COLLINGWOOD STREET PER M.B. 71/89,90 BEING N 34° 00' 00" W