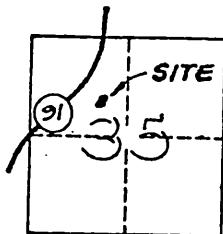


CORNER RECORD

COUNTY OF RIVERSIDE, CALIFORNIA

SEC. 35, T. 2 S., R. 5 W., SAN BERNARDINO MERIDIAN



IN THE CITY OF RIVERSIDE

CORNER TYPE:

- GOV'T. CORNER CONTROL
 MEANDER PROPERTY
 RANCHO OTHER

COORDINATES

N. _____
 E. _____
 ZONE _____

DATE OF SURVEY: JULY 1, 1985 ELEV. _____

CORNER - LEFT AS FOUND FOUND AND TAGGED REESTABLISHED REBUILT

PHYSICAL DESCRIPTION OF CORNER FOUND: EVIDENCE USED TO IDENTIFY THE CORNER Found
Original 2"x2" hubs for NW Lot Corner, R/W B.C. (both sides of St.), and R/W E.C.
to establish missing NE Lot Corner. Found SE Lot Corner and most westerly
Tract corner to set SW Lot Corner by single proportion along South Tract Boundary

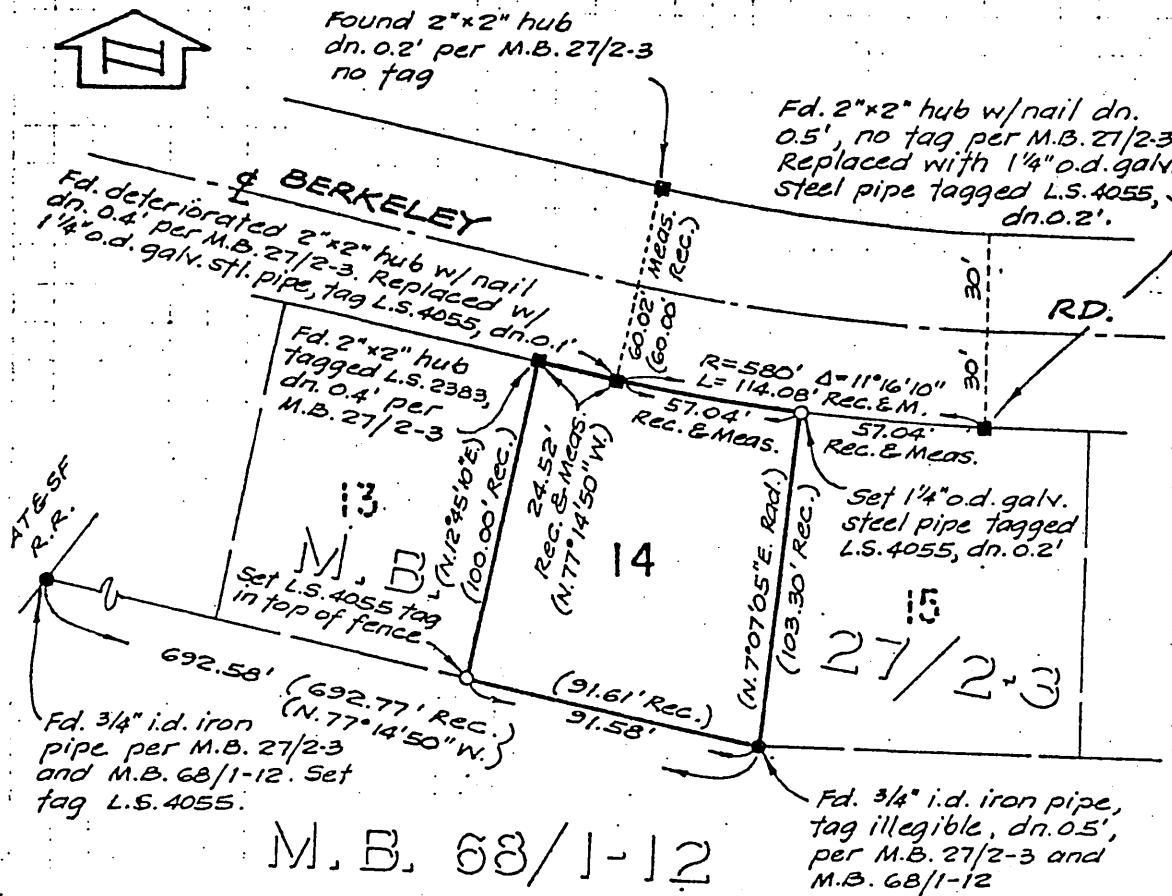
PHYSICAL DESCRIPTION OF MONUMENTS REBUILT, PERPETUATED, OR RESET Replaced deteriorated
2"x2" hub on R/W B.C. Lot 14 with 1/4" o.d. galv. steel pipe, dn. 0.1', ^{tagged} L.S. 4055. Set NE Lot
corner - 1/4" o.d. galv. steel pipe, dn. 0.2', tagged L.S. 4055. Set SW Lot corner -
Nail & tag L.S. 4055 in top of 5 ft. wood fence.

A CORNER RECORD MAY BE USED TO REPORT THE RECOVERY OR PERPETUATION OF SURVEY MONUMENTS, OR TO SHOW THE REESTABLISHMENT OF MONUMENTS WHERE FIELD CONDITIONS AGREE SUBSTANTIALLY WITH RECORD

1. THE CORNER RECORD IS TO BE PREPARED BY A LICENSED LAND SURVEYOR OR REGISTERED CIVIL ENGINEER AND FILED WITH THE COUNTY SURVEYOR (OR COUNTY ENGINEER) OF THE COUNTY IN WHICH THE CORNER IS LOCATED.
2. A CORNER RECORD SHALL BE FILED WITHIN 90 DAYS OF THE DATE OF THE RECOVERY, USE OR REESTABLISHMENT OF A CORNER UNLESS THE CORNER IS TO BE SHOWN ON A RECORD OF SURVEY, PARCEL OR FINAL MAP DERIVED FROM THE SURVEY WHICH USED OR LOCATED SAID CORNER.
3. A CORNER RECORD MAY BE FILED TO SHOW THE PERPETUATION OF ANY EXISTING OR OBLITERATED CORNER OF THE SURVEY OF THE PUBLIC LANDS, AS SAID CORNERS ARE DEFINED IN THE "MANUAL OF INSTRUCTIONS FOR THE SURVEY OF PUBLIC LANDS OF THE UNITED STATES" OF THE BUREAU OF LAND MANAGEMENT. THE IDENTIFICATION OF SUCH CORNERS SHALL BE IF POSSIBLE IN ACCORDANCE WITH THE SYSTEM OF IDENTIFICATION GIVEN BY SAID MANUAL OF INSTRUCTIONS.
4. AT THE OPTION OF THE SURVEYOR OR ENGINEER, A CORNER RECORD MAY BE FILED FOR PROPERTY CORNERS, PROPERTY CONTROLLING CORNERS, REFERENCE MONUMENTS OR ACCESSORIES TO PROPERTY CORNERS WHEN THE COUNTY SURVEYOR OR COUNTY ENGINEER DETERMINES THAT NONE OF THE CONDITIONS REQUIRING A RECORD OF SURVEY EXIST AS OUTLINED IN SECTION 8762 OF THE LAND SURVEYORS ACT.
5. THE COUNTY SURVEYOR OR COUNTY ENGINEER SHALL EXAMINE THE CORNER RECORD WITHIN 20 DAYS FOR CONFORMANCE WITH SECTION 8773 OF THE LAND SURVEYORS ACT. UPON DETERMINATION THAT THE ABOVE LISTED CONDITIONS ARE SATISFIED AND THAT THE INFORMATION REQUIRED ELSEWHERE ON THIS FORM IS COMPLETE, THE COUNTY SURVEYOR OR ENGINEER SHALL FILE AND INDEX THE CORNER RECORD AND NOTIFY THE SURVEYOR/ENGINEER OF SUCH FILING.
6. CORNER RECORDS SUBMITTED FOR SURVEYS WHICH, UNDER SECTION 8762 OF THE LAND SURVEYORS ACT, REQUIRE A RECORD OF SURVEY SHALL BE RETURNED TO THE SURVEYOR OR ENGINEER TOGETHER WITH A STATEMENT OF THE REASON FOR SUCH RETURN.
7. CALIFORNIA COORDINATE SYSTEM DATA MAY BE SHOWN, BUT SHOULD BE ACCOMPANIED BY AN IDENTIFICATION OF THE SOURCE OF SUCH INFORMATION.
8. A SKETCH SHOWING REFERENCE TIES TO ACCESSORIES OR OTHER IDENTIFIABLE OBJECTS IN THE VICINITY OF THE CORNER SHALL BE PROVIDED WHERE APPROPRIATE. PHOTOGRAPHS AND/OR TOPOGRAPHY OF THE MONUMENT AND SURROUNDING AREA RE ENCOURAGED.

COUNTY OF RIVERSIDE, CALIFORNIA

SCALE 1"=60'



() or "Rec." refers to record data per M.B. 27/2-3.

SURVEYOR'S CERTIFICATE

THIS CORNER RECORD WAS PREPARED BY ME OR UNDER MY SUPERVISION IN CONFORMANCE WITH THE LAND SURVEYOR ACT ON July 16,

LAND SURVEYOR JOSEPH N. BEELER

SIGNED: Joseph N. Beeler

No. 4055
L.S. 4055 NO. 4055

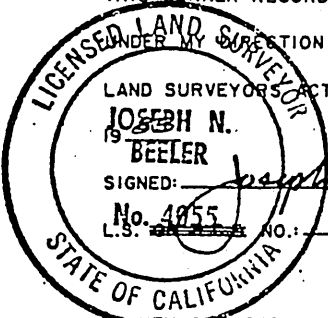
COUNTY SURVEYOR'S CERTIFICATE

THIS CORNER RECORD WAS RECEIVED Aug 9,
19 85

AND EXAMINED AND FILED Aug 28 19 85

BY: Mark S. Bernas

TITLE: Supervising Land Surveyor



COUNTY SURVEYOR'S STATEMENT:

THIS FORM PREPARED BY THE LEAGUE OF CALIFORNIA SURVEYING ORGANIZATIONS, SOUTHERN REGION