

RECORDING REQUESTED BY

SOUTHERN CALIFORNIA EDISON COMPANY

WHEN RECORDED MAIL TO SOUTHERN CALIFORNIA EDISON COMPANY

SOUTHERN CALIFORNIA EDISON CO. P. O. BOX 513 ONTARIO, CALIFORNIA

115873

RECEIVED FOR RECORD SEP 23 1964

30 Min. Past 1 o'clock At Request of So. Calif. Edison Co. Recorded in Official Records

BOOK 3808 PAGE 211

Et. Sec., Records of Riverside County, California

W. W. DeLoach

FEES: 2.00 Records

105560

SPACE ABOVE THIS LINE FOR RECORDER'S USE

PARTIAL QUITCLAIM OF EASEMENT

SOUTHERN CALIFORNIA EDISON COMPANY, a corporation, (former name Southern California Edison Company Ltd.), does hereby remise, release and quitclaim unto the owner or owners of record of the real property hereinafter described, all rights acquired under or by virtue of that certain Grant of Easement dated September 6, 1949, from Anza Realty Company, recorded as document no. 938 on September 7, 1949 in Book 1107, page 31 et seq. of Official Records, in the office of the Recorder of the County of Riverside, State of California, and that certain unrecorded Grant of Easement dated January 21, 1953, from Anza Realty Company, said county and state, in so far and only in so far as said Grants of Easement affect that certain real property in the County of Riverside, State of California, described as follows:

Lot 284 and the westerly 215 feet of Lot 282 of Camp Anza Subdivision No. 1 as shown by Map on file in Book 22, pages 81 and 82 of Maps, Records of Riverside County, California, and that portion of Richard Avenue 66 feet wide as shown on the Map of said Subdivision lying between the southerly prolongation of the easterly and westerly lines of said Lot 284 and northerly of the center line of said Richard Avenue, and its westerly prolongation as vacated by Resolution of the Board of Supervisors of said County, a certified copy of said Resolution having been recorded on June 4, 1952, as Instrument No. 23538.

DISTRICT
ONTARIO
WORK ORDER
7969/0858
6034
IDENTITY
9701
MAP SIZE
60-99
APPROVED R/W & LAND DEPARTMENT
BY
H.E.C.
DATE
7-9-62

The rights hereby quitclaimed are not necessary or useful in the performance of the duties of said Southern California Edison Company to the public.

IN WITNESS WHEREOF, said Southern California Edison Company has caused its corporate name and seal to be affixed hereto and this instrument to be executed by its Vice President and Assistant Secretary, thereunto duly authorized, this 26th day of July, 1962.

SOUTHERN CALIFORNIA EDISON COMPANY,

By W. E. Montgomery Vice President

By M. V. Riley Assistant Secretary

7-25-62

STATE OF CALIFORNIA ) ) ss. COUNTY OF LOS ANGELES )

On this 26th day of July, 1962, before me, the undersigned, a Notary Public in and for said County and State, personally appeared W. E. MONTGOMERY known to me to be a Vice President, and M. V. RILEY known to me to be an Assistant Secretary, of SOUTHERN CALIFORNIA EDISON COMPANY, the corporation that executed the within instrument, and known to me to be the persons who executed the within instrument on behalf of the said corporation, and acknowledged to me that such corporation executed the same pursuant to its By-laws or a resolution of its Board of Directors.

WITNESS my hand and official seal.

Maxine H. Lown Notary Public in and for said County and State

MAXINE H. LOWN

My Commission Expires December 13, 1963

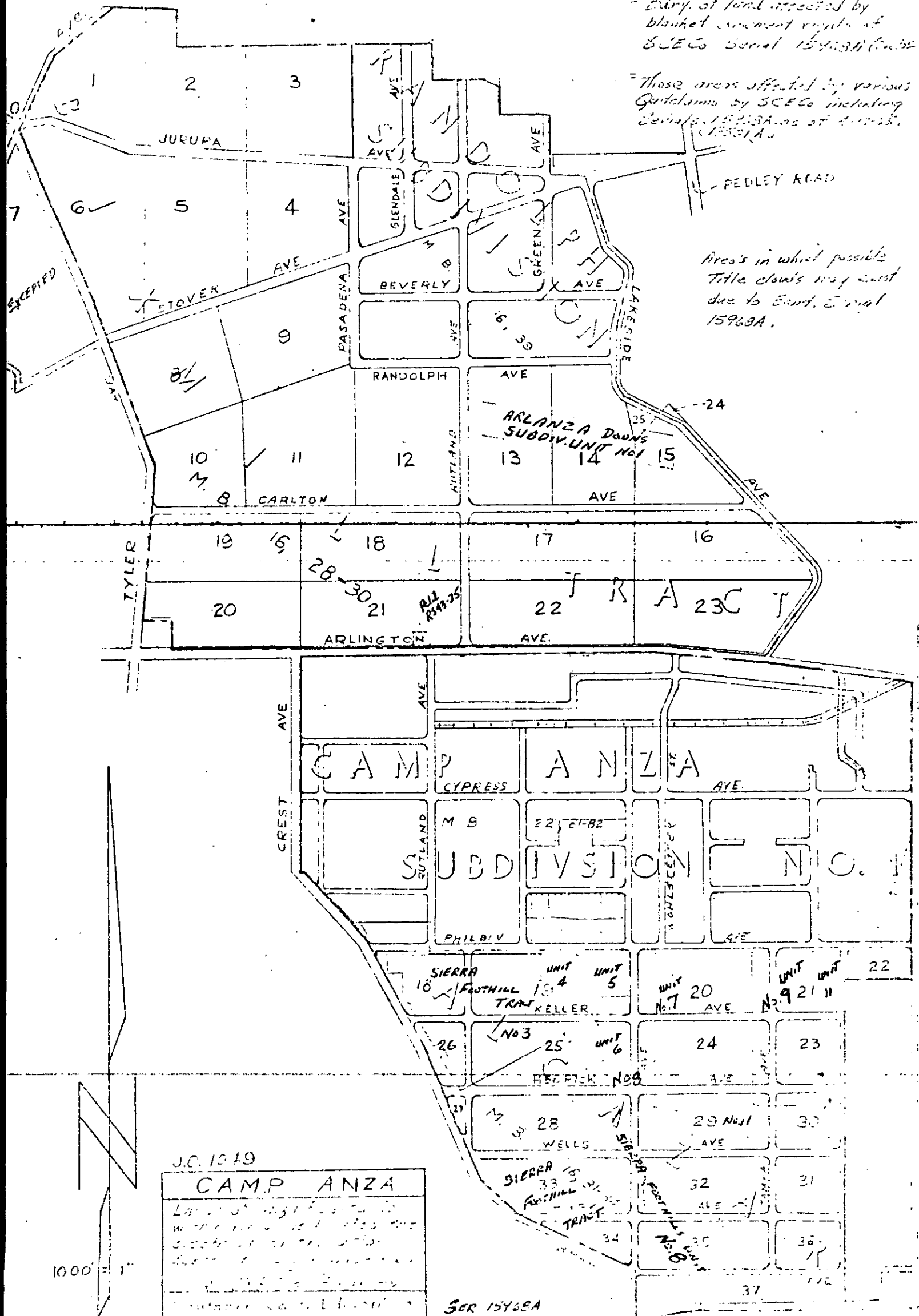
715

Title search per serial 412 of 2P

= Ebrly. of land affected by blanket agreement rights of SCECo Serial 15463A (Cable)

= Those areas affected by various Quitclaims by SCECo including Serials 15463A, 15463B, 15463C, 15463D, 15463E, 15463F, 15463G, 15463H, 15463I, 15463J, 15463K, 15463L, 15463M, 15463N, 15463O, 15463P, 15463Q, 15463R, 15463S, 15463T, 15463U, 15463V, 15463W, 15463X, 15463Y, 15463Z, 15464A, 15464B, 15464C, 15464D, 15464E, 15464F, 15464G, 15464H, 15464I, 15464J, 15464K, 15464L, 15464M, 15464N, 15464O, 15464P, 15464Q, 15464R, 15464S, 15464T, 15464U, 15464V, 15464W, 15464X, 15464Y, 15464Z, 15465A, 15465B, 15465C, 15465D, 15465E, 15465F, 15465G, 15465H, 15465I, 15465J, 15465K, 15465L, 15465M, 15465N, 15465O, 15465P, 15465Q, 15465R, 15465S, 15465T, 15465U, 15465V, 15465W, 15465X, 15465Y, 15465Z, 15466A, 15466B, 15466C, 15466D, 15466E, 15466F, 15466G, 15466H, 15466I, 15466J, 15466K, 15466L, 15466M, 15466N, 15466O, 15466P, 15466Q, 15466R, 15466S, 15466T, 15466U, 15466V, 15466W, 15466X, 15466Y, 15466Z, 15467A, 15467B, 15467C, 15467D, 15467E, 15467F, 15467G, 15467H, 15467I, 15467J, 15467K, 15467L, 15467M, 15467N, 15467O, 15467P, 15467Q, 15467R, 15467S, 15467T, 15467U, 15467V, 15467W, 15467X, 15467Y, 15467Z, 15468A, 15468B, 15468C, 15468D, 15468E, 15468F, 15468G, 15468H, 15468I, 15468J, 15468K, 15468L, 15468M, 15468N, 15468O, 15468P, 15468Q, 15468R, 15468S, 15468T, 15468U, 15468V, 15468W, 15468X, 15468Y, 15468Z, 15469A, 15469B, 15469C, 15469D, 15469E, 15469F, 15469G, 15469H, 15469I, 15469J, 15469K, 15469L, 15469M, 15469N, 15469O, 15469P, 15469Q, 15469R, 15469S, 15469T, 15469U, 15469V, 15469W, 15469X, 15469Y, 15469Z, 15470A, 15470B, 15470C, 15470D, 15470E, 15470F, 15470G, 15470H, 15470I, 15470J, 15470K, 15470L, 15470M, 15470N, 15470O, 15470P, 15470Q, 15470R, 15470S, 15470T, 15470U, 15470V, 15470W, 15470X, 15470Y, 15470Z, 15471A, 15471B, 15471C, 15471D, 15471E, 15471F, 15471G, 15471H, 15471I, 15471J, 15471K, 15471L, 15471M, 15471N, 15471O, 15471P, 15471Q, 15471R, 15471S, 15471T, 15471U, 15471V, 15471W, 15471X, 15471Y, 15471Z, 15472A, 15472B, 15472C, 15472D, 15472E, 15472F, 15472G, 15472H, 15472I, 15472J, 15472K, 15472L, 15472M, 15472N, 15472O, 15472P, 15472Q, 15472R, 15472S, 15472T, 15472U, 15472V, 15472W, 15472X, 15472Y, 15472Z, 15473A, 15473B, 15473C, 15473D, 15473E, 15473F, 15473G, 15473H, 15473I, 15473J, 15473K, 15473L, 15473M, 15473N, 15473O, 15473P, 15473Q, 15473R, 15473S, 15473T, 15473U, 15473V, 15473W, 15473X, 15473Y, 15473Z, 15474A, 15474B, 15474C, 15474D, 15474E, 15474F, 15474G, 15474H, 15474I, 15474J, 15474K, 15474L, 15474M, 15474N, 15474O, 15474P, 15474Q, 15474R, 15474S, 15474T, 15474U, 15474V, 15474W, 15474X, 15474Y, 15474Z, 15475A, 15475B, 15475C, 15475D, 15475E, 15475F, 15475G, 15475H, 15475I, 15475J, 15475K, 15475L, 15475M, 15475N, 15475O, 15475P, 15475Q, 15475R, 15475S, 15475T, 15475U, 15475V, 15475W, 15475X, 15475Y, 15475Z, 15476A, 15476B, 15476C, 15476D, 15476E, 15476F, 15476G, 15476H, 15476I, 15476J, 15476K, 15476L, 15476M, 15476N, 15476O, 15476P, 15476Q, 15476R, 15476S, 15476T, 15476U, 15476V, 15476W, 15476X, 15476Y, 15476Z, 15477A, 15477B, 15477C, 15477D, 15477E, 15477F, 15477G, 15477H, 15477I, 15477J, 15477K, 15477L, 15477M, 15477N, 15477O, 15477P, 15477Q, 15477R, 15477S, 15477T, 15477U, 15477V, 15477W, 15477X, 15477Y, 15477Z, 15478A, 15478B, 15478C, 15478D, 15478E, 15478F, 15478G, 15478H, 15478I, 15478J, 15478K, 15478L, 15478M, 15478N, 15478O, 15478P, 15478Q, 15478R, 15478S, 15478T, 15478U, 15478V, 15478W, 15478X, 15478Y, 15478Z, 15479A, 15479B, 15479C, 15479D, 15479E, 15479F, 15479G, 15479H, 15479I, 15479J, 15479K, 15479L, 15479M, 15479N, 15479O, 15479P, 15479Q, 15479R, 15479S, 15479T, 15479U, 15479V, 15479W, 15479X, 15479Y, 15479Z, 15480A, 15480B, 15480C, 15480D, 15480E, 15480F, 15480G, 15480H, 15480I, 15480J, 15480K, 15480L, 15480M, 15480N, 15480O, 15480P, 15480Q, 15480R, 15480S, 15480T, 15480U, 15480V, 15480W, 15480X, 15480Y, 15480Z, 15481A, 15481B, 15481C, 15481D, 15481E, 15481F, 15481G, 15481H, 15481I, 15481J, 15481K, 15481L, 15481M, 15481N, 15481O, 15481P, 15481Q, 15481R, 15481S, 15481T, 15481U, 15481V, 15481W, 15481X, 15481Y, 15481Z, 15482A, 15482B, 15482C, 15482D, 15482E, 15482F, 15482G, 15482H, 15482I, 15482J, 15482K, 15482L, 15482M, 15482N, 15482O, 15482P, 15482Q, 15482R, 15482S, 15482T, 15482U, 15482V, 15482W, 15482X, 15482Y, 15482Z, 15483A, 15483B, 15483C, 15483D, 15483E, 15483F, 15483G, 15483H, 15483I, 15483J, 15483K, 15483L, 15483M, 15483N, 15483O, 15483P, 15483Q, 15483R, 15483S, 15483T, 15483U, 15483V, 15483W, 15483X, 15483Y, 15483Z, 15484A, 15484B, 15484C, 15484D, 15484E, 15484F, 15484G, 15484H, 15484I, 15484J, 15484K, 15484L, 15484M, 15484N, 15484O, 15484P, 15484Q, 15484R, 15484S, 15484T, 15484U, 15484V, 15484W, 15484X, 15484Y, 15484Z, 15485A, 15485B, 15485C, 15485D, 15485E, 15485F, 15485G, 15485H, 15485I, 15485J, 15485K, 15485L, 15485M, 15485N, 15485O, 15485P, 15485Q, 15485R, 15485S, 15485T, 15485U, 15485V, 15485W, 15485X, 15485Y, 15485Z, 15486A, 15486B, 15486C, 15486D, 15486E, 15486F, 15486G, 15486H, 15486I, 15486J, 15486K, 15486L, 15486M, 15486N, 15486O, 15486P, 15486Q, 15486R, 15486S, 15486T, 15486U, 15486V, 15486W, 15486X, 15486Y, 15486Z, 15487A, 15487B, 15487C, 15487D, 15487E, 15487F, 15487G, 15487H, 15487I, 15487J, 15487K, 15487L, 15487M, 15487N, 15487O, 15487P, 15487Q, 15487R, 15487S, 15487T, 15487U, 15487V, 15487W, 15487X, 15487Y, 15487Z, 15488A, 15488B, 15488C, 15488D, 15488E, 15488F, 15488G, 15488H, 15488I, 15488J, 15488K, 15488L, 15488M, 15488N, 15488O, 15488P, 15488Q, 15488R, 15488S, 15488T, 15488U, 15488V, 15488W, 15488X, 15488Y, 15488Z, 15489A, 15489B, 15489C, 15489D, 15489E, 15489F, 15489G, 15489H, 15489I, 15489J, 15489K, 15489L, 15489M, 15489N, 15489O, 15489P, 15489Q, 15489R, 15489S, 15489T, 15489U, 15489V, 15489W, 15489X, 15489Y, 15489Z, 15490A, 15490B, 15490C, 15490D, 15490E, 15490F, 15490G, 15490H, 15490I, 15490J, 15490K, 15490L, 15490M, 15490N, 15490O, 15490P, 15490Q, 15490R, 15490S, 15490T, 15490U, 15490V, 15490W, 15490X, 15490Y, 15490Z, 15491A, 15491B, 15491C, 15491D, 15491E, 15491F, 15491G, 15491H, 15491I, 15491J, 15491K, 15491L, 15491M, 15491N, 15491O, 15491P, 15491Q, 15491R, 15491S, 15491T, 15491U, 15491V, 15491W, 15491X, 15491Y, 15491Z, 15492A, 15492B, 15492C, 15492D, 15492E, 15492F, 15492G, 15492H, 15492I, 15492J, 15492K, 15492L, 15492M, 15492N, 15492O, 15492P, 15492Q, 15492R, 15492S, 15492T, 15492U, 15492V, 15492W, 15492X, 15492Y, 15492Z, 15493A, 15493B, 15493C, 15493D, 15493E, 15493F, 15493G, 15493H, 15493I, 15493J, 15493K, 15493L, 15493M, 15493N, 15493O, 15493P, 15493Q, 15493R, 15493S, 15493T, 15493U, 15493V, 15493W, 15493X, 15493Y, 15493Z, 15494A, 15494B, 15494C, 15494D, 15494E, 15494F, 15494G, 15494H, 15494I, 15494J, 15494K, 15494L, 15494M, 15494N, 15494O, 15494P, 15494Q, 15494R, 15494S, 15494T, 15494U, 15494V, 15494W, 15494X, 15494Y, 15494Z, 15495A, 15495B, 15495C, 15495D, 15495E, 15495F, 15495G, 15495H, 15495I, 15495J, 15495K, 15495L, 15495M, 15495N, 15495O, 15495P, 15495Q, 15495R, 15495S, 15495T, 15495U, 15495V, 15495W, 15495X, 15495Y, 15495Z, 15496A, 15496B, 15496C, 15496D, 15496E, 15496F, 15496G, 15496H, 15496I, 15496J, 15496K, 15496L, 15496M, 15496N, 15496O, 15496P, 15496Q, 15496R, 15496S, 15496T, 15496U, 15496V, 15496W, 15496X, 15496Y, 15496Z, 15497A, 15497B, 15497C, 15497D, 15497E, 15497F, 15497G, 15497H, 15497I, 15497J, 15497K, 15497L, 15497M, 15497N, 15497O, 15497P, 15497Q, 15497R, 15497S, 15497T, 15497U, 15497V, 15497W, 15497X, 15497Y, 15497Z, 15498A, 15498B, 15498C, 15498D, 15498E, 15498F, 15498G, 15498H, 15498I, 15498J, 15498K, 15498L, 15498M, 15498N, 15498O, 15498P, 15498Q, 15498R, 15498S, 15498T, 15498U, 15498V, 15498W, 15498X, 15498Y, 15498Z, 15499A, 15499B, 15499C, 15499D, 15499E, 15499F, 15499G, 15499H, 15499I, 15499J, 15499K, 15499L, 15499M, 15499N, 15499O, 15499P, 15499Q, 15499R, 15499S, 15499T, 15499U, 15499V, 15499W, 15499X, 15499Y, 15499Z, 15500A, 15500B, 15500C, 15500D, 15500E, 15500F, 15500G, 15500H, 15500I, 15500J, 15500K, 15500L, 15500M, 15500N, 15500O, 15500P, 15500Q, 15500R, 15500S, 15500T, 15500U, 15500V, 15500W, 15500X, 15500Y, 15500Z

Areas in which possible Title clouds may exist due to Emt. Serial 15963A.



J.C. 1949  
**CAMP ANZA**  
Lots 1 through 37 are in  
with the exception of lots 15  
which are in the name of  
the State of California  
under the name of Camp Anza  
Subdivision No. 1  
Serial 15463A