

QUITCLAIM DEED

1871

I, MARY S. EVANS, a widow, do hereby remise, release and forever quitclaim to City of Riverside, a municipal corporation all that real property situated in the City of Riverside, County of Riverside, State of California, described as follows:

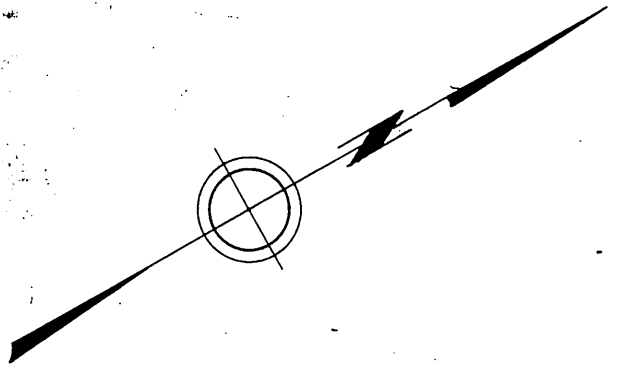
Beginning at a point in the northerly line of Lot 53 of the Southern California Colony Association Lands as shown by map recorded in Book 7, page 3 of Maps, records of San Bernardino County, California; said point being south $60^{\circ} 58'$ east 326.75 feet from the easterly line of Orange Street; thence south $34^{\circ} 36'$ west 10.05 feet; thence south $60^{\circ} 58'$ east, 60.76 feet to the westerly line of Lot 6, Files Subdivision No. 4 as shown by map on file in Book 6, page 60 of Maps, records of Riverside County, California; thence northerly along the westerly line of said Lot 6 to the northwesterly corner thereof; thence north $60^{\circ} 58'$ west 60.76 feet to the point of beginning.

Containing 608 square feet.

Witness my hand this 30th day of October, 1946.

1871

Scale: 1"=100'



25 25

ORANGE STREET 666.55

25 25

25 25

S 29° 00' W

104.15

238.05

117.4

80

80

80

118

164

LOT 61

S.C.C.A.

STRONG

241

637.2

637.2

N 29° 00' E

450

1871

1

1A

2

164

50

50

50

45

185.3

5

2533

245

50

50

50

50

50

50

50

50

50

50

50

50

60.76

60.76

60.76

60.76

60.76

60.76

60.76

60.76

60.76

60.76

60.76

60.76

60.76

60.76

10.05

60.76

60.76

60.76

60.76

60.76

60.76

60.76

60.76

60.76

60.76

60.76

60.76

60.76

60.76

60.76

60.76

60.76

60.76

60.76

60.76

60.76

60.76

60.76

60.76

60.76

60.76

60.76

60.76

60.76

60.76

60.76

60.76

60.76

60.76

60.76

60.76

60.76

60.76

60.76

60.76

60.76

60.76

60.76

60.76

60.76

60.76

60.76

60.76

60.76

60.76

60.76

60.76

60.76

60.76

60.76

60.76

60.76

60.76

60.76

60.76

60.76

60.76

60.76

60.76

60.76

60.76

60.76

60.76

60.76

60.76

60.76

60.76

60.76

60.76

60.76

60.76

60.76

60.76

60.76

60.76

60.76

60.76

60.76

60.76

60.76

60.76

60.76

60.76

60.76

60.76

60.76

60.76

60.76

60.76

60.76

60.76

60.76

60.76

60.76

60.76

60.76

60.76

60.76

60.76

60.76

60.76

60.76

60.76

60.76

60.76

60.76

60.76

60.76

60.76

60.76

60.76

60.76

60.76

60.76

60.76

60.76

60.76

60.76

60.76

60.76

60.76

60.76

60.76

60.76

60.76

60.76

60.76

60.76

60.76

60.76

60.76

60.76

60.76

60.76

60.76

60.76

60.76

60.76

60.76

60.76

60.76

60.76

60.76

60.76

60.76

60.76

60.76

60.76

60.76

60.76

60.76

60.76

60.76

60.76

60.76

60.76

60.76

60.76

60.76

60.76

60.76

60.76

60.76

60.76

60.76

60.76

60.76

60.76

60.76

60.76

60.76

60.76

60.76

60.76

60.76

60.76

60.76

60.76

60.76

60.76

60.76

60.76

60.76

60.76

60.76

60.76

60.76

60.76

60.76

60.76

60.76

60.76

60.76

60.76

60.76

60.76

60.76

60.76

60.76

60.76

60.76

60.76

60.76

60.76

60.76

60.76

60.76

60.76

60.76

60.76

60.76

60.76

60.76

60.76

60.76

60.76

60.76

60.76

60.76

60.76

60.76

60.76

60.76

60.76

60.76

60.76

60.76

60.76

60.76

60.76

60.76

60.76

60.76

60.76

60.76

60.76

60.76

60.76

60.76

60.76

60.76

60.76

60.76

60.76

60.76

60.76

60.76

60.76

60.76

60.76

60.76

</

Quitclaim Deed

1871

1871

I, MARY S. EVANS, a widow,

in consideration of ONE and no/100 - - - - - Dollars,
(\$1.00) - - - - -

to me in hand paid, the receipt of which is hereby acknowledged, do hereby Remise, Release and forever Quitclaim to City of Riverside, a municipal corporation

all that real property situated in the City of Riverside County of Riverside, State of California, described as follows:

Beginning at a point in the northerly line of Lot 53 of the Southern California Colony Association Lands as shown by map recorded in Book 7, page 3 of Maps, records of San Bernardino County, California; said point being south 60° 58' east 326.75 feet from the easterly line of Orange Street; thence south 34° 36' west 10.05 feet; thence south 60° 58' east, 60.76 feet to the westerly line of Lot 6, Files Subdivision No. 4 as shown by map on file in Book 6, page 60 of Maps, records of Riverside County, California; thence northerly along the westerly line of said Lot 6 to the northwesterly corner thereof; thence north 60° 58' west 60.76 feet to the point of beginning.

Posted

Containing 608 square feet.

APPROVED AS TO DESCRIPTION
CITY ENGINEER

To Have and to Hold to the said grantee, its successors ~~heirs~~ or assigns as a perpetual easement and right of way for sewer purposes.

Witness my hand this 30th day of October, 19 46

Mary S. Evans

1871

RESOLUTION NO. 4113.

RESOLUTION OF THE COUNCIL OF THE CITY OF RIVERSIDE,
CALIFORNIA, ACCEPTING A DEED.

RESOLVED, that that certain deed dated October 30, 1946, from Mary S. Evans, a widow, quitclaiming to the City of Riverside, a municipal corporation, a portion of Lot 53, of the Lands of the Southern California Colony Association, as a perpetual easement and right-of-way for sewer purposes, be, and the same is hereby, accepted.

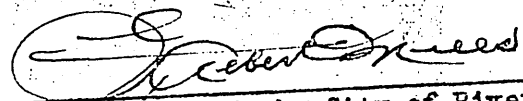
I, G. Albert Mills, City Clerk of the City of Riverside, California, hereby certify that the foregoing resolution was duly and regularly introduced and adopted by the Council of said City, at its meeting held on the 19th day of November, 1946, by the following vote:

Ayes: Councilmen Rawlings, Allbright, Carter, Pickett, Dales,
Rathgeber, and Harris.

Noes: None.

Absent: None.

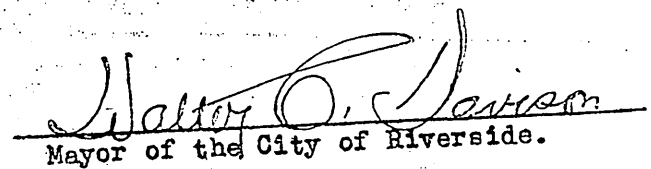
IN WITNESS WHEREOF, I have hereunto set my hand and affixed the official seal of the City of Riverside, California, this 19th day of November, 1946.



City Clerk of the City of Riverside.

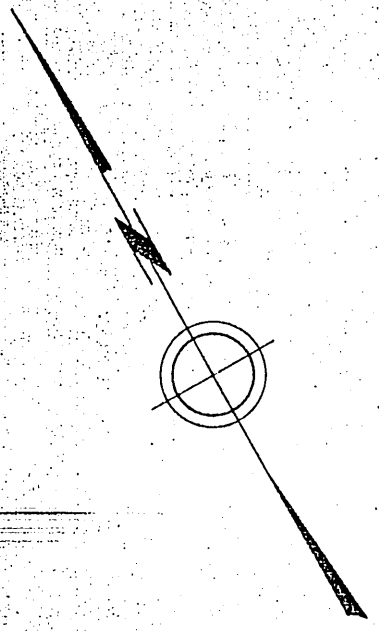
I hereby approve the foregoing resolution this 19th day of November,

1946.



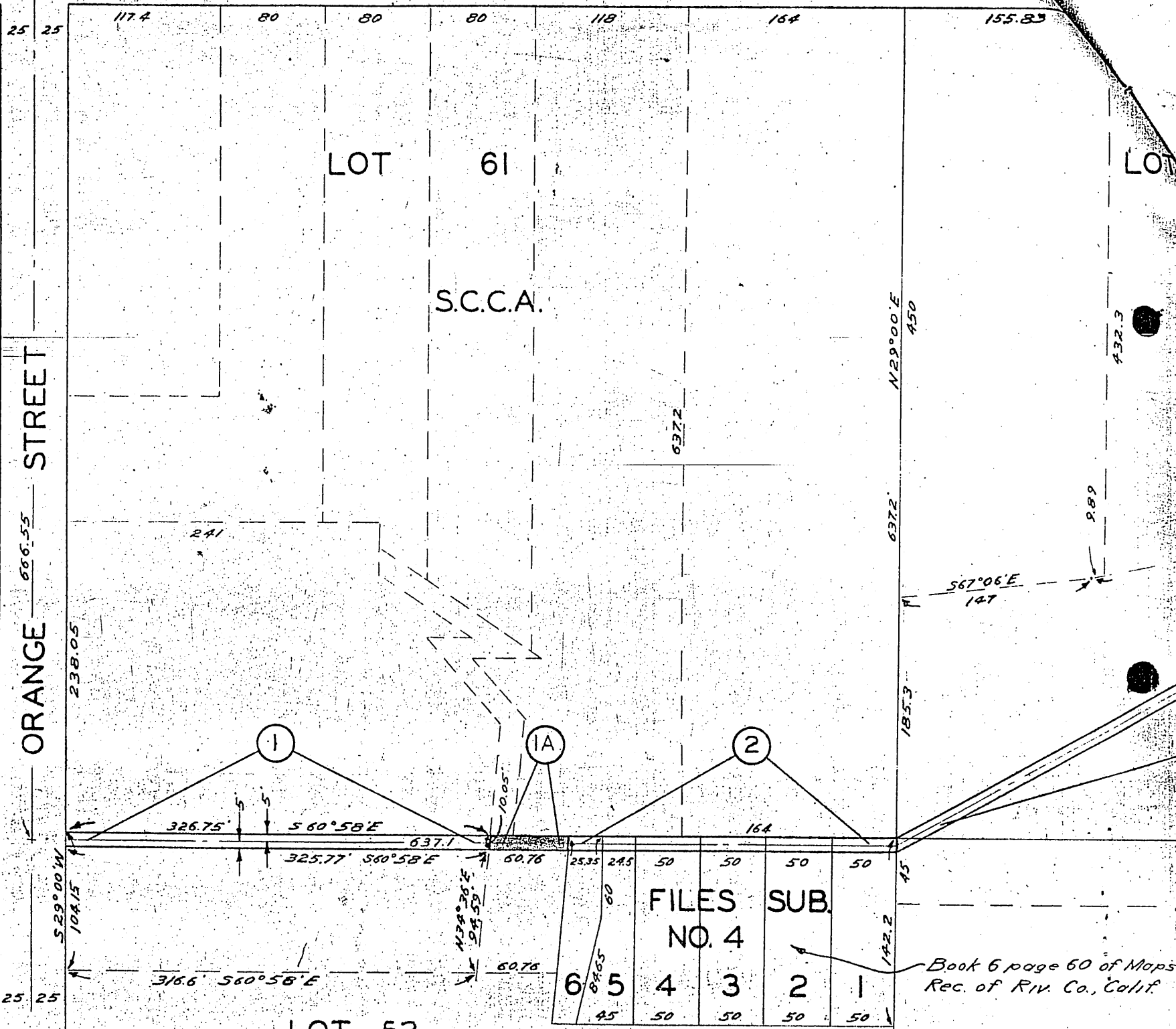
Mayor of the City of Riverside.

STRONG



Scale: 1"=100'

ORANGE STREET



LOT 61

S.C.C.A.

1

1A

2

LOT 53

6	5	4	3	2	1
FILES	SUB.				
NO. 4					
60	50	50	50	50	50
45	50	50	50	50	50

Book 6 page 60 of Maps Rec. of Riv. Co., Calif.

