

CITY OF RIVERSIDE

INTEROFFICE MEMO

TO: Alice A. Hare  
City Clerk

DATE: February 6, 1986

FROM: Barbara Purvis  
Assistant City Attorney

SUBJECT: CITY OF RIVERSIDE v. SOUTHERN CALIFORNIA EDISON COMPANY  
RIVERSIDE SUPERIOR COURT CASE NO. 161142

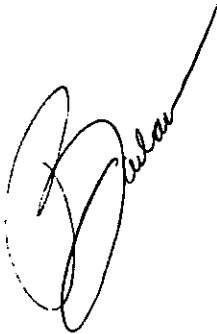
Please find enclosed the Final Order of Condemnation in the above-referenced action in eminent domain recorded in the office of the County Recorder on January 30, 1986 as Instrument No. 23268. By the recorded Final Order of Condemnation, the City acquired the electrical facilities owned by the Southern California Edison Company in that area of the City known as "Annexation No. 35 - Sycamore Annexation No. 1".

As the Final Order is in lieu of a deed, please assign the enclosed document a City deed number.

If any additional information is necessary, please don't hesitate to let me know.

BP/0616M/jm

cc: Acting Public Utilities Director  
Real Property Services Manager



EXEMPT PURSUANT TO GOV'T. CODE Sec. 6103

*Rec by - Mail to:*

**FILED**  
RIVERSIDE COUNTY

JAN 30 1986

1 JOHN WOODHEAD, City Attorney  
2 BARBARA PURVIS, Assistant City Attorney  
3 City Hall, 3900 Main Street  
4 Riverside, California 92522  
5 Telephone: (714) 787-7567  
6  
7 Attorneys for Plaintiff

RECEIVED FOR RECORDING  
Min. Past Block

JAN 30 1986

Recorded in Official Records  
of Riverside County, California

By *William E. Conerly*  
RECORDED  
Fee \$

WILLIAM E. CONERLY, Clerk  
P. Theraldson  
Deputy

8 IN THE SUPERIOR COURT OF THE STATE OF CALIFORNIA  
9 IN AND FOR THE COUNTY OF RIVERSIDE

11381

11 CITY OF RIVERSIDE, a municipal  
12 corporation,  
13  
14 Plaintiff,  
15 vs.  
16 SOUTHERN CALIFORNIA EDISON COMPANY,  
17 a corporation; et al.  
18 Defendants.

NO. 161142  
FINAL ORDER  
OF CONDEMNATION

18 Judgment in Condemnation having been entered in the  
19 above-entitled action on 1-30, 1986, in Judgment Book  
20 No. 444, Page 53, adjudging that plaintiff is entitled  
21 to take by condemnation rights-of-way and easements and the  
22 facilities or partial interest therein described in the First  
23 Amended Complaint in Eminent Domain on file herein;

24 IT IS HEREBY ORDERED, ADJUDGED AND DECREED that there is  
25 hereby condemned and conveyed to plaintiff CITY OF RIVERSIDE for  
26 the purpose of conducting, transmitting and distributing  
27 electrical energy for the use of said City of Riverside and all

23268

1 uses appurtenant thereto the facilities or partial interest  
2 therein listed in the First Amended Complaint in Eminent Domain  
3 on file herein together with the easements and rights-of-way  
4 listed in said First Amended Complaint. Said facilities and  
5 interest in real property are listed in Exhibit 1 attached  
6 hereto and incorporated herein by this reference and are shown  
7 in Exhibit 2 attached hereto and incorporated herein by this  
8 reference. The easements and rights-of-way listed in Exhibit 1  
9 and shown on Exhibit 2 include the following:

10 A - Edison Document 282409

11 Unrecorded License dated November 25, 1968 from the  
12 Pacific Telephone and Telegraph Company to the Southern  
13 California Edison Company.

14 B - Edison Document 239893

15 Grant of Easement dated June 30, 1948 from Isabel  
16 Bush to the California Electric Power Company recorded  
17 July 26, 1948 in Book 997, Page 539, Official Records of  
18 Riverside County, California.

19 C - Edison Document 234235

20 Right-of-Way and Easement dated January 7, 1941,  
21 from Albert E. Gleaves to The Nevada-California Electric  
22 Corporation recorded January 21, 1941, in Book 488, Page  
23 192, Official Records of Riverside County, California.

24 D - Edison Document 251894

25 Easement dated July 13, 1960 from Mabel C. Cain to  
26 California Electric Power Company recorded July 15, 1960,  
27 in Book 2733, Page 133, Official Records of Riverside

1 County, California.

2 E. - Edison Document 252306

3 Grant of Easement dated July 28, 1960 from Edgemont  
4 Community Services District to the California Electric  
5 Power Company recorded August 5, 1960, in Book 2745,  
6 Page 40, Official Records of Riverside County, California.

7 F. - Edison Document 252307

8 Grant of Easement dated July 29, 1960 from Dill  
9 Lumber Company to California Electric Power Company  
10 recorded August 5, 1960 in Book 2745, Page 41, Official  
11 Records of Riverside County, California.

12 IT IS FURTHER ORDERED, ADJUDGED AND DECREED that the  
13 interest of the defendants SOUTHERN CALIFORNIA EDISON COMPANY;  
14 FIRST INTERSTATE BANK OF DENVER, a corporation, Trustee; and  
15 JAMES R. COWGILL, Trustee, in the property described in the  
16 First Amended Complaint in Eminent Domain on file herein are  
17 hereby condemned to and taken by the plaintiff City of Riverside  
18 for public uses, to wit: poles and fixtures, overhead  
19 conductors and devices, electric power lines, electric light  
20 lines and signal systems, underground conduits, conductors and  
21 devices, line transformers and meters and easements and  
22 rights-of-way necessary for the transmission or distribution of  
23 electricity for the purpose of furnishing or supplying electric  
24 light, heat or power to that area of the City of Riverside known  
25 as "Annexation No. 35--Sycamore Annexation No. 1".

26 IT IS FURTHER ORDERED, ADJUDGED AND DECREED that a  
27 certified copy of this Final Order in Condemnation be recorded

23268

1 in the office of the County Recorder of the County of Riverside,  
 2 State of California, and thereupon title to said facilities  
 3 easements and rights-of-way as described in the First Amended  
 4 Complaint on file herein shall vest in plaintiff City of  
 5 Riverside and all interests of defendants SOUTHERN CALIFORNIA  
 6 EDISON COMPANY; FIRST INTERSTATE BANK OF DENVER, a corporation,  
 7 Trustee; and JAMES R. COWGILL, Trustee, in and to said  
 8 facilities and property, shall be terminated.

9  
10 Dated: **JAN 30 1966**

**ROBERT J. TIMLIN**

11  
12 Judge of the Superior Court

13  
14  
15 **This must be in red to be a  
"CERTIFIED COPY"**

16 Each document to which this certificate  
 17 is attached is certified to be a full,  
 18 true and correct copy of the original  
 19 on file and of record in my office.

*William E. Conerly*

20 WILLIAM E. CONERLY, COUNTY CLERK  
 21 of the Superior Court,  
 22 County of Riverside, State of California

23 Dated: **JAN 30 1966**



Entered on date filed  
 Judgement Book \_\_\_\_\_ Page \_\_\_\_\_

BP/0107P/jm

23268

SOUTHERN CALIFORNIA EDISON COMPANY  
FINAL INVENTORY OF  
ELECTRICAL DISTRIBUTION FACILITIES  
SERVING CUSTOMERS WITHIN ANNEXATION NO. 35  
RIVERSIDE, CALIFORNIA

MARCH 1, 1985

FACILITIES TO BE ACQUIRED IN PLACE BY THE CITY OF RIVERSIDE

ACCOUNT NUMBER 360 - LAND AND LAND RIGHTS

Easements and Rights of Way pertaining to and necessary for the Electrical Distribution System as per Edison Document Nos. 282409 and 239893.

ACCOUNT NUMBER 364 - POLES AND FIXTURES

1	each	Pole, wood, TFL, 30 ft. (partial interest)
2	each	Pole, wood, TFL, 35 ft. (partial interest)
2	each	Pole, wood, TFL, 45 ft. (partial interest)
6	each	Pole, wood, TFL, 50 ft. (partial interest)
2	each	Pole, wood, TFL, 55 ft. (partial interest)
1	each	Pole, wood, TFL, 60 ft. (partial interest)
2	each	Pole, wood, TFL, 35 ft.
1	each	Pole, wood, TFL, 45 ft.
6	each	Crossarm, wood, single, 8 ft. steel pin
4	each	Crossarm, wood, double, 8 ft. steel pin
9	each	Crossarm, wood, single, 10 ft. steel pin
3	each	Crossarm, wood, double, 10 ft. steel pin
10	each	Guy, aerial
2	each	Guy, down, 9/32 in.
4	each	Guy, down, 5/16 in.
1	each	Anchor, steel plate, 10 ft. rod (partial interest)
4	each	Anchor, steel plate, 8 ft. rod
3	each	Guard, metal, guy wire
2	each	Guard, PVC, guy wire
1	each	Bracket, insulator, wye-bus
44	each	Pin, insulator, steel, 1 in. thread
3	each	Pin, insulator, steel, 1-3/8 in. thread
3	each	Stud, insulator, 7-1/2 in.
2	each	Rack, secondary
1	each	Rack, end of arm assembly
32	each	Step, pole
4	each	Strip, visibility
3	each	Conduit, PVC, 1 in.
2	each	Bracket, transformer mounting
2	each	Extension, link assembly
1	each	Yoke, dead-end
1	each	Bolt, insulator assembly

EXHIBIT 1

23268

SOUTHERN CALIFORNIA EDISON COMPANY  
FINAL INVENTORY OF ELECTRICAL DISTRIBUTION FACILITIES  
SERVING CUSTOMERS WITHIN ANNEXATION NO. 35  
RIVERSIDE, CALIFORNIA  
MARCH 1, 1985  
FACILITIES TO BE ACQUIRED IN PLACE BY THE CITY OF RIVERSIDE

ACCOUNT NUMBER 365 - OVERHEAD CONDUCTORS AND DEVICES

2,975	feet	Wire, 6 awg, bare copper
5,385	feet	Wire, 4 awg, bare copper
750	feet	Wire, 4 awg, bare aluminum
1,605	feet	Wire, 2 awg, bare aluminum
750	feet	Wire, 2 awg, weather resistant aluminum
100	feet	Cable, 4 awg, aluminum triplex
735	feet	Cable, 1/0 awg, aluminum triplex
140	feet	Cable, 1/0 awg, aluminum quadruplex
300	feet	Cable, 4/0 awg, aluminum quadruplex
40	each	Insulator, pin, type, 4 kV
2	each	Insulator, pin, type, 13 kV
3	each	Insulator, pin, type, 23 kV
3	each	Insulator, pin, type, 27 kV
3	each	Insulator, line post type, 35 kV
25	each	Insulator, spool type dead-end
11	each	Insulator, suspension type, 6" (2 each)
1	each	Clamp, dead-end, automatic, flexible
3	each	Clamp, top post insulator
20	each	Grip, preform
11	each	Clevis, dead-end
2	each	Spacer, fiberglass
9	each	Ground assembly

ACCOUNT NUMBER 368 - LINE TRANSFORMERS

1	each	Transformer, 1-phase, 15 kVA, 12000-120/240V
4	each	Transformer, 1-phase, 37.5 kVA, 12000-120/240V
3	each	Transformer, 1-phase, 50 kVA, 12000-277/480V
2	each	Support, bolted transformer
7	each	Arrestor, lightning, 12 kV
5	each	Cutout, 100A, 4 kV
6	each	Holder, fuse, 23 kV
4	each	Mounting, fuse, 14 kV

ACCOUNT 369 - SERVICES

1	each	Service, 2-8 awg, weather resistant copper
1	each	Service, 2-6 awg, weather resistant copper
1	each	Service, 3-6 awg, weather resistant copper
1	each	Service, 6 awg, weather resistant aluminum
12	each	Service, 6 awg, aluminum triplex
9	each	Service, 4 awg, aluminum triplex
1	each	Service, 4/0 awg, aluminum quadruplex
28	each	Grip, preformed

EXHIBIT.....

23268

SOUTHERN CALIFORNIA EDISON COMPANY  
FINAL INVENTORY OF ELECTRICAL DISTRIBUTION FACILITIES  
SERVING CUSTOMERS WITHIN ANNEXATION NO. 35  
RIVERSIDE, CALIFORNIA  
MARCH 1, 1985  
FACILITIES TO BE ACQUIRED IN PLACE BY THE CITY OF RIVERSIDE

ACCOUNT 369 - SERVICES (Cont'd)

Underground

- 1 each Service, 3-350 & 1-4/0, synthetic insulated aluminum, 1/c, 600V
- 1 each Service, 3-700 & 1-4/0, synthetic insulated aluminum, 1/c, 600V
- 24 feet Riser, PVC, conduit, 3 in.
- 27 feet Riser, PVC, conduit, 4 in.

ACCOUNT NUMBER 370 - METERS

- 5 each Meter, watthour, 1-phase, 120V, 15A
- 11 each Meter, watthour, 1-phase, 240V, 15A
- 11 each Meter, watthour, 1-phase, 240V, 30A
- 2 each Meter, watthour, 3-phase, 240V, 30A
- 1 each Meter, watthour, 3-phase, 480V, 15A
- 1 each Meter, watthour, 3-phase, 480V, 30A
- 1 each Meter, demand, 3-phase, 120V, 2.5A
- 1 each Meter, demand, 3-phase, 277/480V, 2.5A
  
- 17 each Block, test, 2-pole, 100A
- 10 each Block, test, 2-pole, 200A
- 2 each Switch, test
- 2 each Cover, test switch
- 6 each Transformer, current, indoor, 200/5A

Property Accounting Department  
CES:bn3367V  
March 13, 1985

EXHIBIT !



SOUTHERN CALIFORNIA EDISON COMPANY  
REVISED FINAL INVENTORY OF  
ELECTRICAL DISTRIBUTION FACILITIES  
SERVING CUSTOMERS WITHIN ANNEXATION NO. 35  
RIVERSIDE, CALIFORNIA

AS OF MARCH 1, 1985

SEVERANCE DAMAGES - FACILITIES TO BE REMOVED

ACCOUNT NUMBER 360 - LAND AND LAND RIGHTS

Easements and rights of way pertaining to and necessary for the Electrical Distribution System as per Edison Document Nos. 234235, 252306, 252307 and 251894.

ACCOUNT NUMBER 364 - POLES AND FIXTURES

1	each	Pole, wood, TFL, 40 ft.
6	each	Pole, wood, TFL, 40 ft. (partial interest)
7	each	Crossarm, wood, single, 10 ft., steel pin
2	each	Crossarm, wood, double, 10 ft., steel pin
2	each	Guy, down, 9/32 in.
2	each	Guy, down, 5/16 in.
1	each	Anchor, steel plate, 8 ft. rod (partial interest)
2	each	Anchor, steel plate, 8 ft. rod
2	each	Guard, metal, guy wire
1	each	Guard, PVC, guy wire
26	each	Pin, insulator, steel, 1-3/8 in. thread
1	each	Bracket, 3 transformer mounting
1	each	Extension, link assembly
1	each	Conduit, PVC, 1 in.

ACCOUNT NUMBER 365 - OVERHEAD CONDUCTORS AND DEVICES

7,350	feet	Wire, 2 awg, bare aluminum
26	each	Insulator, pin type, 27 kV
1	each	Insulator, spool type, dead-end
3	each	Insulator, suspension type, 6 in. (2 each)
9	each	Grip, preform
3	each	Clevis, dead-end
1	each	Ground assembly

ACCOUNT NUMBER 368 - LINE TRANSFORMERS

2	each	Transformer, 1-phase, 5 kVA, 4160-120/240V
1	each	Transformer, 1-phase, 5 kVA, 2400/4160-120/240V
1	each	Transformer, 1-phase, 15 kVA, 2400-120/240V
1	each	Transformer, 1-phase, 25 kVA, 4160-120/240V
3	each	Transformer, 1-phase, 25 kVA, 12000-277/480V

ACCOUNT NUMBER 369 - SERVICES

1	each	Service, 4/0 awg, aluminum quadruplex
---	------	---------------------------------------

Property Accounting Department  
CES:bn3367V/5  
January 8, 1986

EXHIBIT 1.....

23268

20 257306  
R: 2745-70  
C: 8/5/00

NOTE: Line between 213066 and 213073 To be removed under surtance damages

Doc. 251894  
O.C. 2735-05  
REC. 7-15-46

Doc. 270257  
O.C. 988-72  
REC. 12-4-46

**LEGEND**

**POLES ACQUIRED THROUGH CONDEMNATION.**

- FULL INTEREST EDISON
- PARTIAL INTEREST EDISON
- PARTIAL INTEREST FOREIGN

**POLES TO BE RETAINED BY EDISON, CITY OF RIVERSIDE TO ACQUIRE EQUITY THROUGH CONDEMNATION.**

- FULL INTEREST EDISON
- ▣ PARTIAL INTEREST EDISON
- PARTIAL INTEREST FOREIGN

**POLES TO BE RETAINED BY EDISON, LINES BEING CONDEMNED WILL BE SEVERED AT THESE POLES.**

- ▲ FULL INTEREST EDISON
- ▲ PARTIAL INTEREST EDISON
- △ PARTIAL INTEREST FOREIGN

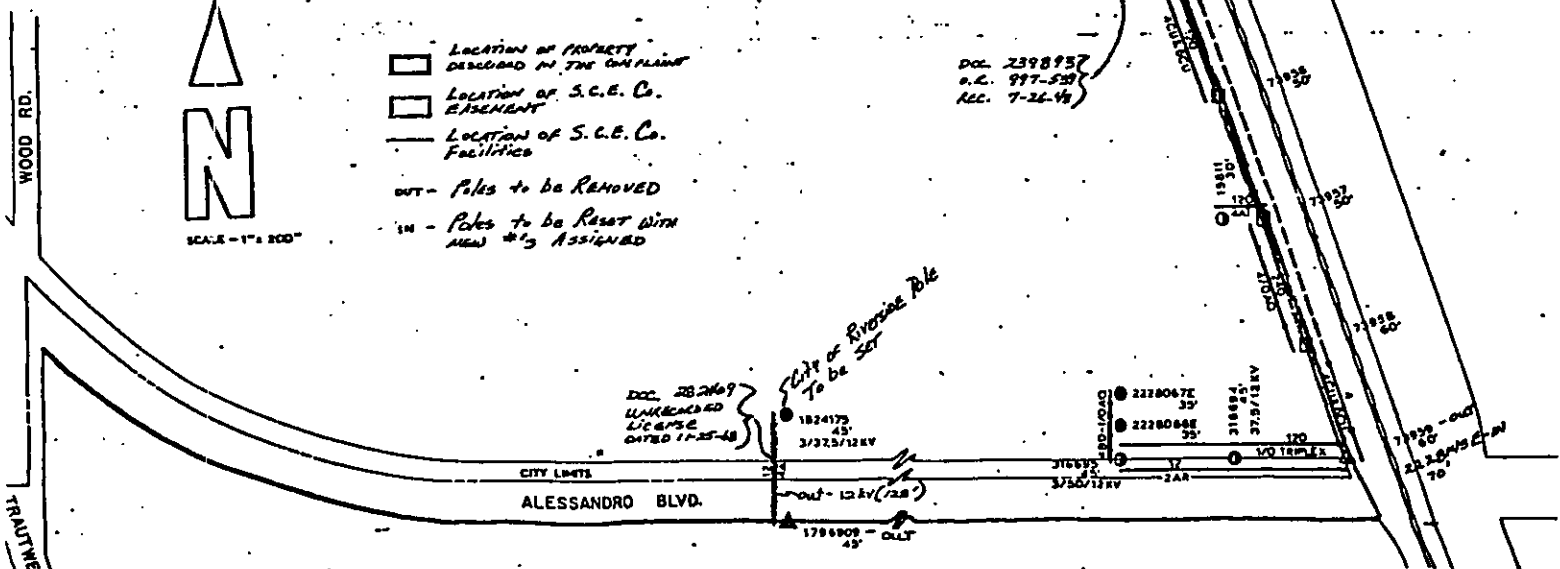
**WIRE**

- ==== 4 CONDUCTOR
- ==== 3 CONDUCTOR
- ==== 2 CONDUCTOR



SCALE - 1" = 200'

- LOCATION OF PROPERTY DESCRIBED IN THE COMPLAINT
- LOCATION OF S.C.E. Co. EASEMENT
- LOCATION OF S.C.E. Co. Facilities
- OUT - Poles to be REMOVED
- IN - Poles to be RESET WITH NEW #'S ASSIGNED



SCC No 161142

PLAINTIFF - CITY OF RIVERSIDE

vs.

DEFENDANT - SOUTHERN CALIFORNIA EDISON COMPANY