

332265

1  
2  
3  
4  
5  
6  
7  
8  
9  
10  
11  
12  
13  
14  
15  
16  
17  
18  
19  
20  
21  
22  
23  
24  
25  
26  
27

JOHN WOODHEAD, City Attorney  
ROBERT A. SAMS, Assistant City Attorney  
City Hall, 3900 Main Street  
Riverside, California 92501  
Telephone: (714) 782-5566

Attorneys for Plaintiff

RECEIVED FOR RECORD  
Min. Past 3 o'clock

NCV 14 1988  
Recorded in Official Records  
of Riverside County, California

W. E. Conerly  
RECORDER  
Fees \$

FILED  
RIVERSIDE COUNTY

NOV 04 1988

WILLIAM E. CONERLY, Clerk  
P. Smith, Deputy

IN THE SUPERIOR COURT OF THE STATE OF CALIFORNIA  
IN AND FOR THE COUNTY OF RIVERSIDE

CITY OF RIVERSIDE, a municipal corporation,

Plaintiff,

vs.

SOUTHERN CALIFORNIA EDISON COMPANY,  
a corporation; et al.

Defendants.

12100  
13430

NO. 192421

FINAL ORDER  
OF CONDEMNATION

Judgment in Condemnation having been entered in the  
above-entitled action on \_\_\_\_\_, 1988, in Judgment Book  
No. \_\_\_\_\_, Page \_\_\_\_\_, adjudging that plaintiff is entitled  
to take by condemnation rights-of-way and easements and the  
facilities or partial interest therein described in the  
Complaint in Eminent Domain on file herein;

IT IS HEREBY ORDERED, ADJUDGED AND DECREED that there is  
hereby condemned and conveyed to plaintiff CITY OF RIVERSIDE,  
for the purpose of conducting, transmitting and distributing  
electrical energy for the use of said City of Riverside and all

332265

1 uses appurtenant thereto, the easements, rights-of-way and  
2 facilities described in the Complaint in Eminent Domain on file,  
3 as more particularly described in Exhibit A attached hereto and  
4 incorporated herein by this reference and shown on Exhibit B  
5 attached hereto and incorporated herein by this reference. The  
6 easements and rights-of-way listed in Exhibit A and shown on  
7 Exhibit B include the following:

8 Edison Document 278233:

9 Grant of Easement dated March 22, 1968 from the  
10 Corporation of the President of the San Bernardino Stake  
11 of the Church of Jesus Christ of Latter Day Saints to ~~the~~  
12 Southern California Edison Company recorded April 22,  
13 1968 as Instrument No. 37051, Official Records of  
14 Riverside County, California.

15 Edison Document 294800:

16 Grant of Easement dated October 8, 1970 from the  
17 Corporation of the President of the San Bernardino Stake  
18 of the Church of Jesus Christ of Latter Day Saints to ~~the~~  
19 Southern California Edison Company recorded October 22,  
20 1970 as Instrument No. 106574, Official Records of  
21 Riverside County, California.

22 Edison Document 318326:

23 Grant of Easement dated July 31, 1973 from the  
24 Corporation of the President of the San Bernardino Stake  
25 of the Church of Jesus Christ of Latter Day Saints to ~~the~~  
26 Southern California Edison Company recorded August 18,  
27 1973 as Instrument No. 106205, Official Records of

13930

332265

1  
2  
3  
4  
5  
6  
7  
8  
9  
10  
11  
12  
13  
14  
15  
16  
17  
18  
19  
20  
21  
22  
23  
24  
25  
26  
27

Riverside County, California.

IT IS FURTHER ORDERED, ADJUDGED AND DECREED that the interests of the defendants SOUTHERN CALIFORNIA EDISON COMPANY, FIRST INTERSTATE BANK OF DENVER, Trustee, and JAMES R. COWGILL, Trustee, in the property particularly described and shown on Exhibits A and B hereof are hereby condemned to and taken by the plaintiff City of Riverside for public uses, to wit: poles, towers and fixtures; overhead conductors and devices; underground conduit; underground conductors and devices; transformers; services; meters; and easements and rights-of-way necessary for the transmission or distribution of electricity for the purpose of furnishing or supplying electric light, heat or power to that area of the City of Riverside known as "Annexation No. 57--Orangecrest".

IT IS FURTHER ORDERED, ADJUDGED AND DECREED that a certified copy of this Final Order in Condemnation be recorded in the Office of the County Recorder of the County of Riverside, State of California, and thereupon title to said facilities easements and rights-of-way shall vest in plaintiff City of Riverside and all interests of defendants SOUTHERN CALIFORNIA EDISON COMPANY, FIRST INTERSTATE BANK OF DENVER, Trustee, and JAMES R. COWGILL, Trustee, in and to said facilities and property shall be terminated.

Dated: 11/4/88

*Robert J. Timlin*  
\_\_\_\_\_  
Judge of the Superior Court

RAS/0607P/jm

Entered on date filed  
Judgment Book 494 Page 188

332265

SOUTHERN CALIFORNIA EDISON COMPANY  
REVISED INVENTORY OF  
ELECTRICAL DISTRIBUTION FACILITIES  
INVOLVED IN PROPOSED CONDEMNATION NO. 57 (ORANGECREST)  
BY THE CITY OF RIVERSIDE

AS OF MARCH 30, 1988

PAGE 1 OF 2

FACILITIES TO BE ACQUIRED IN PLACE BY THE CITY OF RIVERSIDE

ACCOUNT NUMBER 360- LAND AND LAND RIGHTS

Easements and rights of way pertaining to and necessary for the electrical distribution system as per Edison documents numbered 278233, 294800 and 318326.

ACCOUNT NUMBER 364 - POLES, TOWERS AND FIXTURES

2	each	Pole, wood, TFL, 35 ft.
4	each	Pole, wood, TFL, 40 ft. (PARTIAL INTEREST)
5	each	Pole, wood, TFL, 40 ft.
15	each	Pole, wood, TFL, 45 ft. (PARTIAL INTEREST)
4	each	Pole, wood, TFL, 45 ft.
7	each	Crossarm, wood, single, 8 ft. steel pin
18	each	Crossarm, wood, single, 10 ft. steel pin
5	each	Crossarm, wood, double, 10 ft. steel pin
2	each	Guy, aerial
4	each	Guy, down, 9/32 in.
1	each	Guy, down, 3/8 in.
3	each	Anchor, steel plate, 8 ft. rod
1	each	Anchor, steel plate, 10 ft. rod
5	each	Cover, PVC, guy wire
1	each	Guard, metal, guy wire
1	each	Bracket, transformer, 3 position
2	each	Bracket, bus
6	each	Bracket, angle L/P
15	each	Pin, insulator, steel, 1 in. thread
60	each	Pin, insulator, steel, 1-3/8 in. thread
22	each	Strip, visibility
10	each	Step, pole

ACCOUNT NUMBER 365 - OVERHEAD CONDUCTORS AND DEVICES

6,775	feet	Wire, 4 avg, bare aluminum
5,220	feet	Wire, 2 avg, bare aluminum
8,340	feet	Wire, 1/0 avg, bare aluminum
90	feet	Cable, 1/0 avg, aluminum triplex
15	each	Insulator, pin type, 13 kV
60	each	Insulator, pin type, 23 kV
6	each	Insulator, line post type, 27 kV
22	each	Insulator, suspension type, 6in. (2ea)
4	each	Insulator, spool type dead-end
20	each	Grip dead-end
12	each	Clamp, insulator
6	each	Clamp, top post insulator
19	each	Clevis, dead-end
3	each	Clamp dead-end bolted
6	each	Ground assembly

EXHIBIT A

(1)

332265

SOUTH CALIFORNIA EDISON COMPANY  
REVISED INVENTORY OF ELECTRICAL DISTRIBUTION FACILITIES  
INVOLVED IN PROPOSED CONDEMNATION  
BY THE CITY OF RIVERSIDE  
AS OF MARCH 30, 1988

FACILITIES TO BE ACQUIRED IN PLACE BY THE CITY OF RIVERSIDE

ACCOUNT NUMBER 366 - UNDERGROUND CONDUIT

30	feet	Riser, PVC conduit 1 in.
10	feet	Riser, PVC conduit 3 in.
25	feet	Riser, PVC conduit 5 in.
7,128	feet	Conduit, direct burial, 5 in.
3	each	Vault
66	each	Rack, cable
35	each	Hook, cable rack
1	lot	Miscellaneous grounding

ACCOUNT NUMBER 367 - UNDERGROUND CONDUCTOR AND DEVICES

3,013	feet	Cable, 750 kcmil, synthetic insulated aluminum, 1/C, 17 Kv
515	feet	Wire, 4/0 avg copper
3	each	Pothead, 750 kcmil. synthetic insulated aluminum, 1/c 17kV
15	each	Connector, premolded seperable, elbow, 200A 16Kv
15	each	Connector, premolded seperable, elbow, 600A 16 Kv
21	each	Receptacle, elbow, 2 avg, synthetic cable, 17kV
3	each	Switch, load break oil, type RAM, 600A, 17 kv, 4 way

ACCOUNT NUMBER 368 - TRANSFORMERS

3	each	Transformer, 1-phase, 10kVA, 12000/120/240V
2	each	Transformer, 1-phase, 15kVA, 12000/120/240V
11	each	Arrester, lightning 17kV
7	each	Holder, fuse 14.4kV
3	each	Mounting, fuse 14.4 kV
1	each	Capacitor bank, 600 kVAR, 12 kv, switched

ACCOUNT NUMBER 369 - SERVICES

1	each	Service. 4 avg, aluminum triplex
2	each	Service. 1/0 avg, aluminum triplex
1	each	Service. 4 avg, aluminum quadruplex

ACCOUNT NUMBER 370 - METERS

3	each	Meter, watthour, 1-phase, 240 V 30A
1	each	Meter, watthour, 3-phase, 480V 15A
3	each	Block, test, 100A

Property Valuation  
R J Harris  
July 26, 1988

332265

LEGEND

POLES TO BE ACQUIRED THROUGH CONDEMNATION BY THE  
CITY OF RIVERSIDE



FULL INTEREST EDISON



PARTIAL INTEREST EDISON

LINES BEING CONDEMNED WILL BE SEVERED AT THESE POLES  
POLE TO BE RETAINED BY EDISON



FULL INTEREST EDISON

CONDUCTOR

size      voltage

3 - CONDUCTOR

size      voltage

2 - CONDUCTOR

EXHIBIT B (1)

11/13439

UNDERGROUND FACILITIES

332265

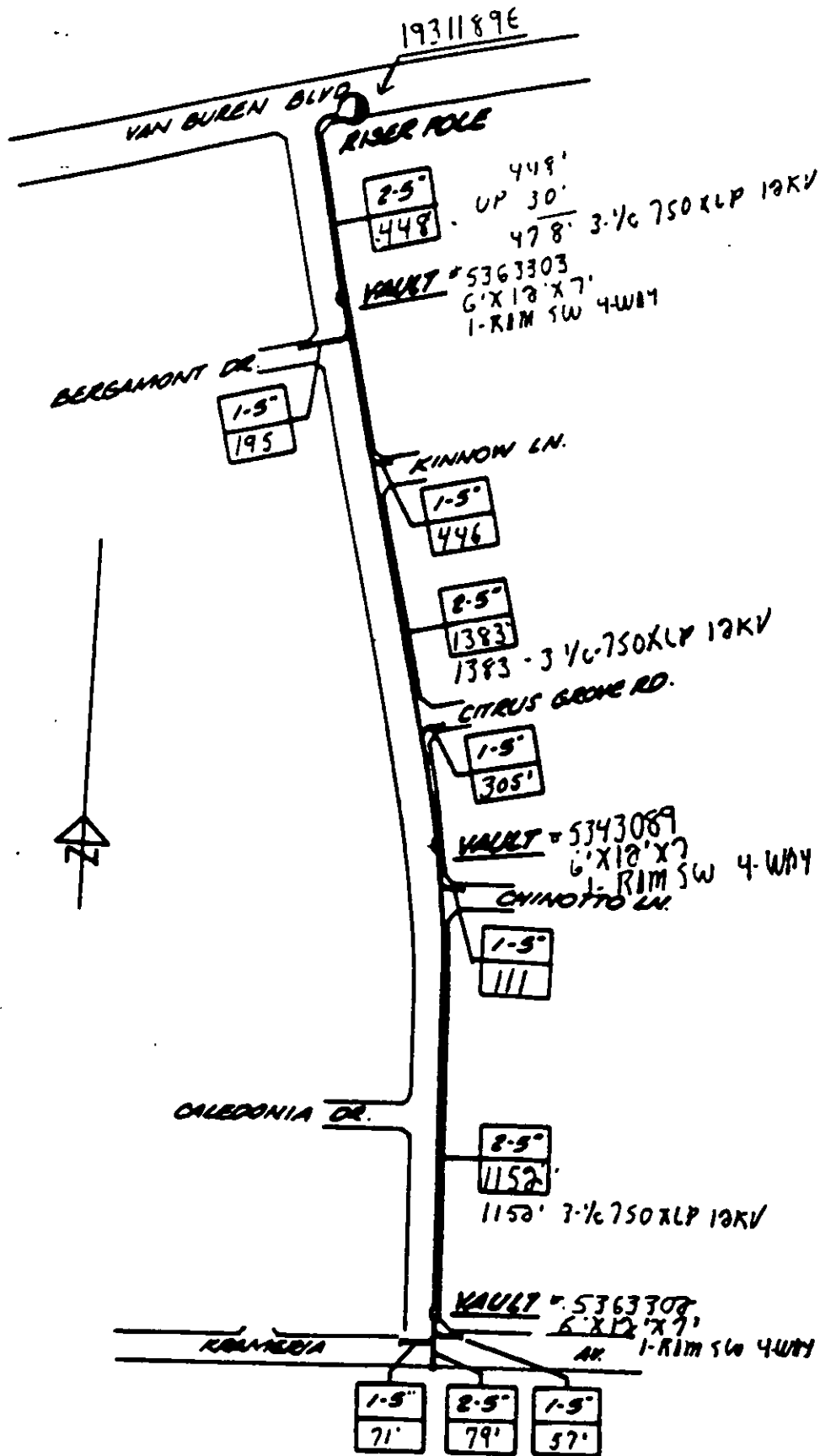


EXHIBIT B (2)

13430 ~~43~~

332265

RIVERSIDE

RIVERSIDE CO. 632 1671-1

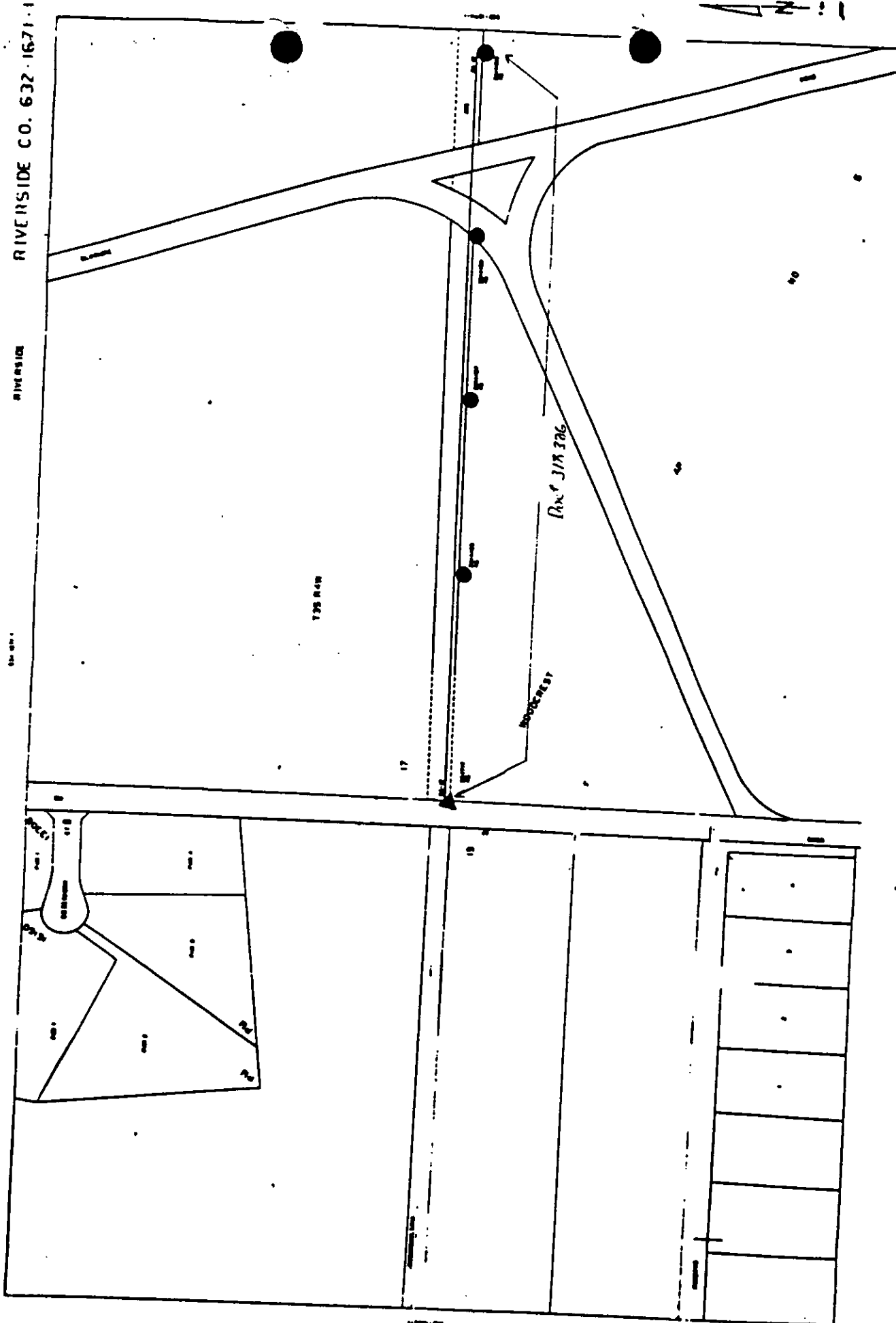


EXHIBIT B (3)

13A39



332265

RIVERSIDE CO. 630 167

SEC 20

135 R 4 W

Doc 274500

Doc 274500

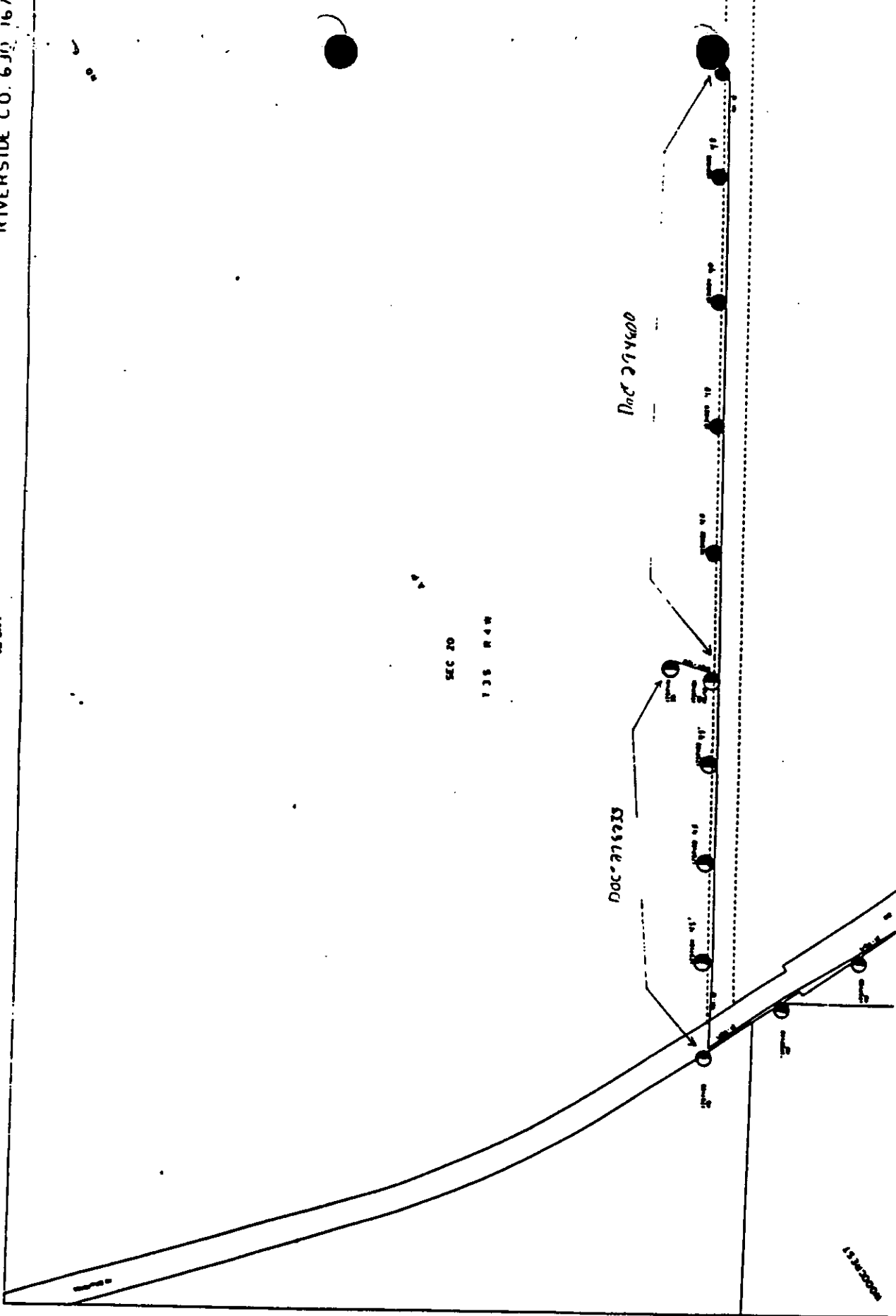


EXHIBIT B (4)

13439

332265

RIVERSIDE

RIVERSIDE CO. 628-1674

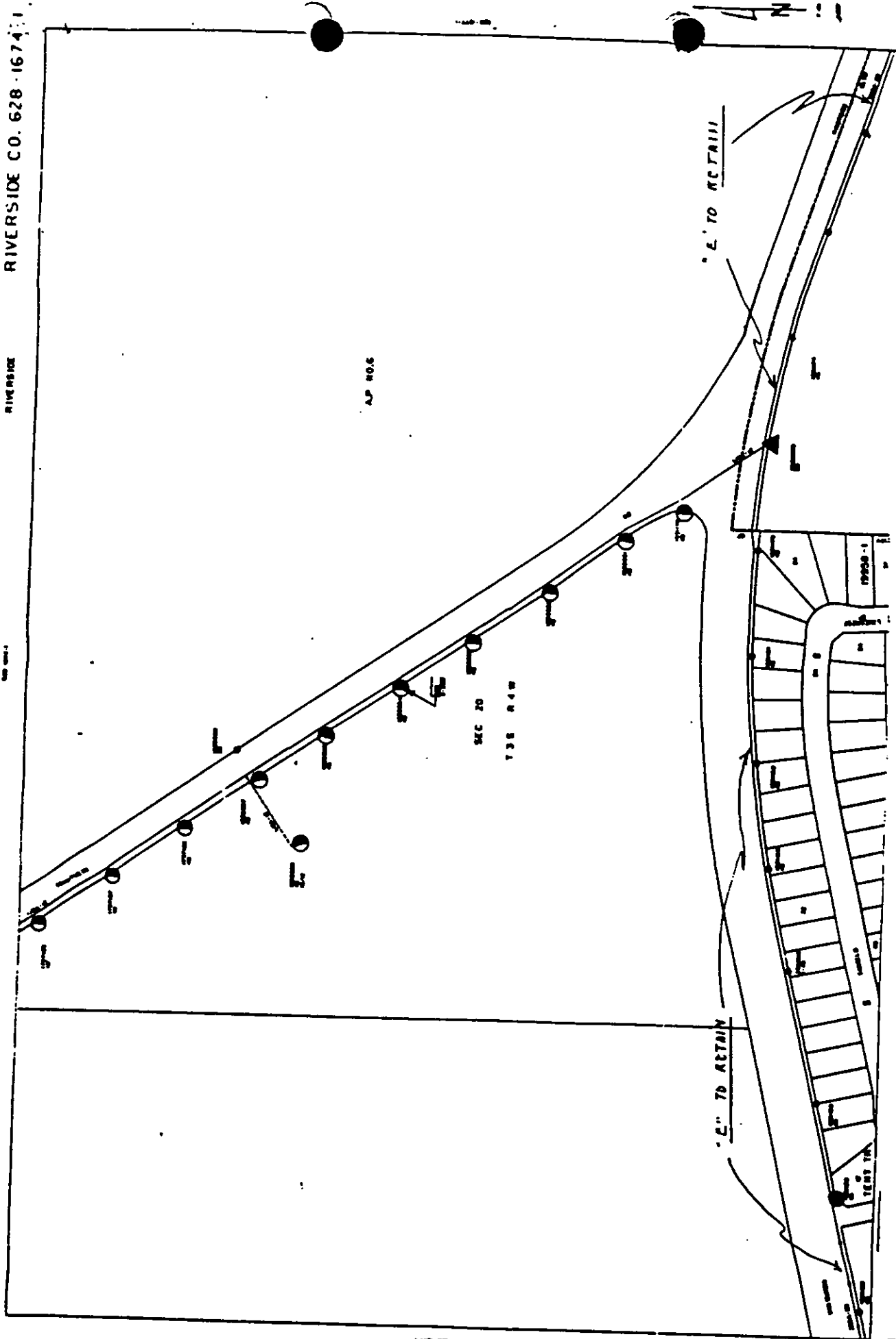


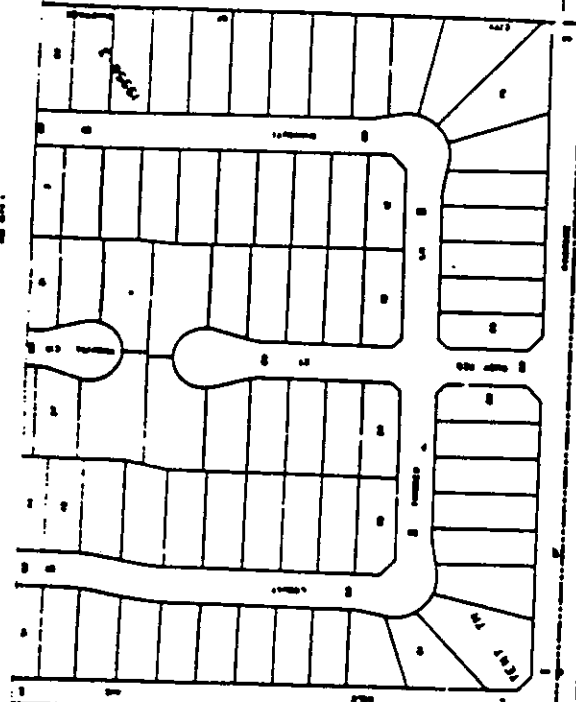
EXHIBIT E

13439

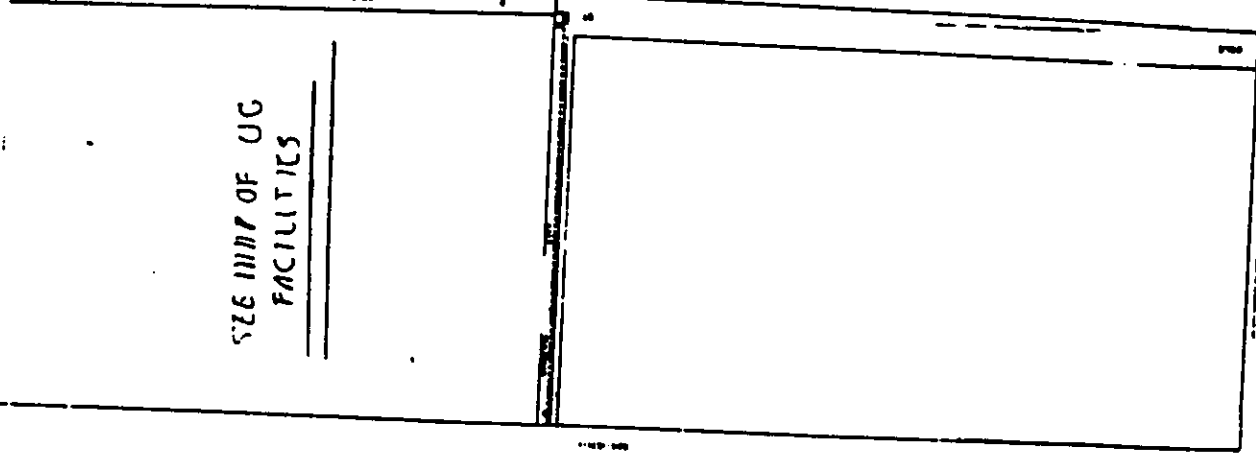
332265

REVISED U.S. 16/7/11

REVISED



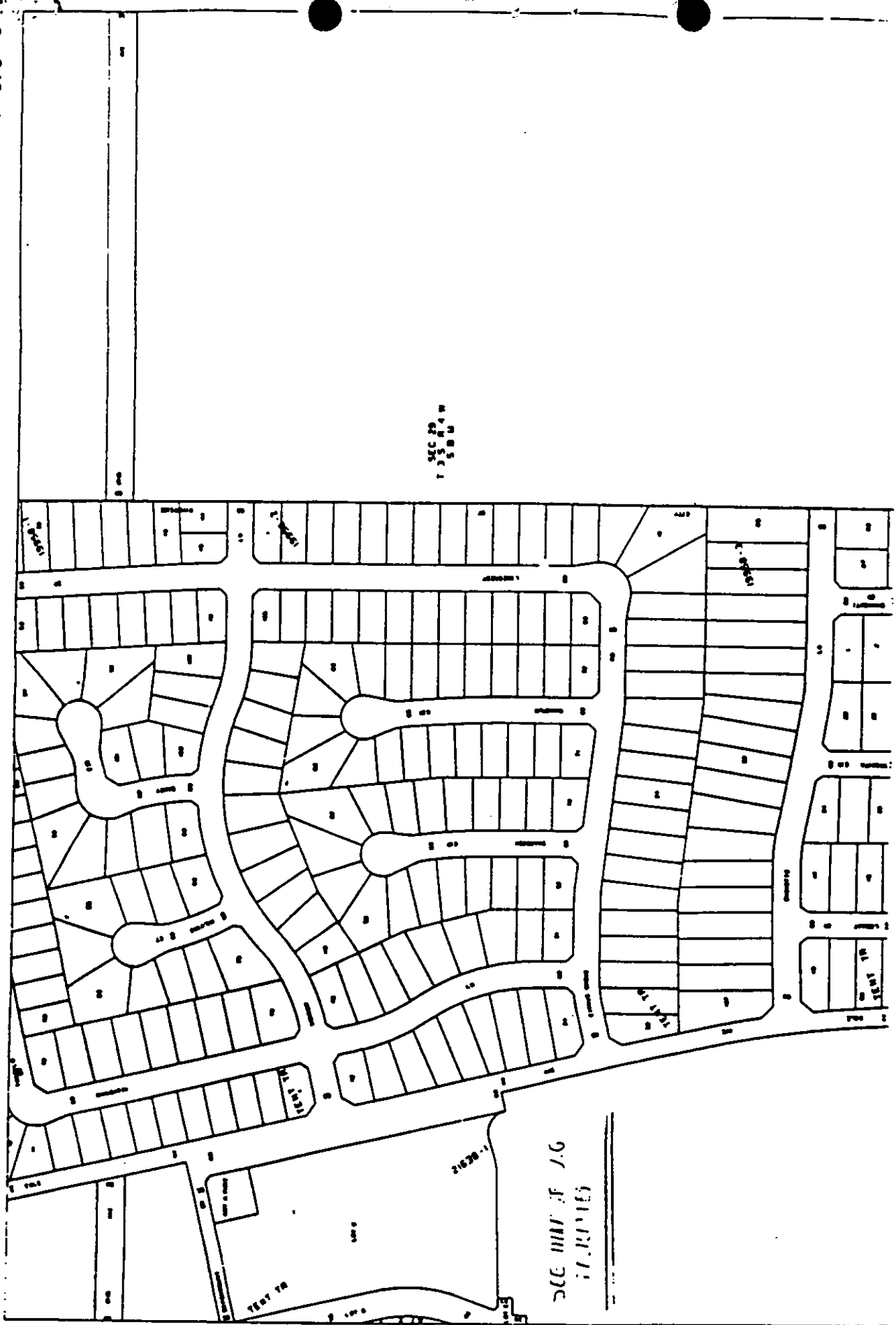
SIZE AND OF UG  
FACILITIES



332265

RIVERSIDE CO. 626 1674

RIVERSIDE



SEC 29  
T 33 S  
R 4 W  
S B M

SEC UNIT # 1, 6  
PLANNED

EXHIBIT B (7)  
13430