

74908
FEB 10 1995 *file*
J/K

1 STAN T. YAMAMOTO, City Attorney #92381
2 KATHLEEN M. GONZALES, Asst. City Attorney #80105
3 CITY OF RIVERSIDE
4 City Hall, 3900 Main Street
5 Riverside, California 92522
6 (909) 782-5567

FILED
RIVERSIDE COUNTY

FEB 14 1995 *file*

7 Attorneys for Plaintiff

ARTHUR A. SIMS, Clerk
By *R. Castro* R. Castro
Deputy

8 CONSOLIDATED SUPERIOR/MUNICIPAL COURTS OF
9 RIVERSIDE COUNTY, STATE OF CALIFORNIA

20803

11	CITY OF RIVERSIDE, a municipal corporation,)	CASE NO. 259809
12)	GENERAL CIVIL
13	Plaintiff)	
14	vs.)	FINAL ORDER OF CONDEMNATION
15	SOUTHERN CALIFORNIA EDISON COMPANY, et al.,)	
16	Defendants.)	
17	_____		

18 Judgment in Condemnation having been entered in the
19 above-entitled action on _____, 199_, in Judgment Book
20 No. _____, Page _____, adjudging that Plaintiff is entitled
21 to take by condemnation rights-of-way and easements and the
22 facilities or partial interest therein described in the Complaint
23 in Eminent Domain on file herein;

24 IT IS HEREBY ORDERED, ADJUDGED AND DECREED that there is
25 hereby condemned and conveyed to Plaintiff CITY OF RIVERSIDE, for
26 the purpose of conducting, transmitting and distributing
27 electrical energy for the use of said City of Riverside and

1 all uses appurtenant thereto, the easements, rights-of-way and
2 facilities described in the Complaint in Eminent Domain on file,
3 as more particularly described in the Inventory and Map attached
4 hereto as Exhibits A and B, respectively, and incorporated herein
5 by this reference as though set forth in full. The easements and
6 rights-of-way listed in Exhibit A and shown on Exhibit B is the
7 following:

8 Edison Document No. 96245; Grant of Easement executed in
9 April 19, 1948 from the Riverside Water Company to Southern
10 California Edison Company recorded May 4, 1948, as
11 Instrument No. 234, in Book 903, page 600, Official Records
12 of Riverside County, California.

13 Edison Document No. 184507; Grant of Easement executed
14 September 4, 1959, from Gordon Miter and Josephine N. Miter,
15 husband and wife, to Southern California Edison Company
16 recorded October 9, 1959, in Book 2560, page 439, Official
17 Records of Riverside County, California.

18 IT IS FURTHER ORDERED, ADJUDGED AND DECREED that the
19 interests of the Defendants SOUTHERN CALIFORNIA EDISON COMPANY
20 and HARRIS TRUST AND SAVINGS BANK, Trustee, in the property
21 particularly described and shown on Exhibits A and B hereof are
22 hereby condemned to and taken by the Plaintiff City of Riverside
23 for public uses, to wit: land and land rights; poles, towers and
24 fixtures; overhead conductors; underground conduit, conductors
25 and devices; line transformers; services; meters and street
26 lighting and signal systems necessary for the transmission or
27 distribution of electricity for the purpose of furnishing or

1 supplying electric light, heat or power to those areas of the
2 City of Riverside known as Annexation No. 77--Chase Road/West La
3 Cadena (LAFCO No. 91-71-5).

4 IT IS FURTHER ORDERED, ADJUDGED AND DECREED that a
5 certified copy of this Final Order in Condemnation be recorded in
6 the Office of the County Recorder of the County of Riverside,
7 State of California, and thereupon title to said facilities
8 easements and rights-of-way shall vest in Plaintiff CITY OF
9 RIVERSIDE and all interests of Defendants SOUTHERN CALIFORNIA
10 EDISON COMPANY and HARRIS TRUST AND SAVINGS BANK, Trustee, in and
11 to said facilities and property shall be terminated.

12 Dated:

13 2/14/95 William H. ...
14 Judge of the Superior Court

SOUTHERN CALIFORNIA EDISON COMPANY
INVENTORY OF ELECTRIC DISTRIBUTION FACILITIES
ASSOCIATED WITH THE CITY OF RIVERSIDE ANNEXATION NO. 77
AS OF MARCH 16, 1994

FACILITIES TAKEN IN PLACE

ACCOUNT NUMBER 360 - LAND AND LAND RIGHTS

Easements and Rights of Way pertaining to, and necessary for, the electrical Distribution System as per Edison documents numbered 96245 and 184507.

ACCOUNT NUMBER 355 - POLES AND FIXTURES

1	each	Pole, wood, TFL, 75 ft. (partial interest)
13	each	Pole, wood, TFL, 80 ft.
7	each	Pole, wood, TFL, 80 ft. (partial interest)
1	lot	Miscellaneous pole related hardware such as: Crossarms, Braces, Pins, Guys, Brackets, etc.

ACCOUNT NUMBER 356 - OVERHEAD CONDUCTOR AND DEVICES

9,735	feet	Wire, 653.9 mcm, bare ACSR
1	lot	Miscellaneous wire related hardware such as: Insulators, Grounds, Clamps, Connectors, Jumpers, etc.

ACCOUNT NUMBER 364 - POLES, TOWERS AND FIXTURES

1	each	Pole, wood, TFL, 35 ft.
4	each	Pole, wood, TFL, 40 ft. (partial interest)
1	each	Pole, wood, TFL, 40 ft.
1	lot	Miscellaneous pole related hardware such as: Crossarms, Braces, Pins, Guys, Brackets, etc.

ACCOUNT NUMBER 365 - OVERHEAD CONDUCTOR AND DEVICES

6,315	feet	Wire, 336.4 mcm, bare ACSR
225	feet	Wire, 1/0 awg, bare ACSR
325	feet	Wire, 4 awg, bare ACSR
920	feet	Wire, 6 awg, bare copper
1,385	feet	Wire, 1/0 awg, aluminum triplex
160	feet	Wire, 4 awg, aluminum triplex
1	lot	Miscellaneous wire related hardware such as: Insulators, Grounds, Clamps, Connectors, Jumpers, etc.

ACCOUNT NUMBER 368 - LINE TRANSFORMERS

1	each	Transformer, 1-phase, 5 kVA, 12000-120/240V
3	each	Transformer, 1-phase, 15 kVA, 12000-120/240V
2	each	Transformer, 1-phase, 25 kVA, 12000-120/240V
2	each	Holder, fuse, SMU-20, 15 kV
2	each	Arrestor, lightning, 12 kV
1	lot	Miscellaneous transformer related hardware such as: Connectors, Clamps, Brackets, Fuses, etc.

ACCOUNT NUMBER 369 - SERVICES

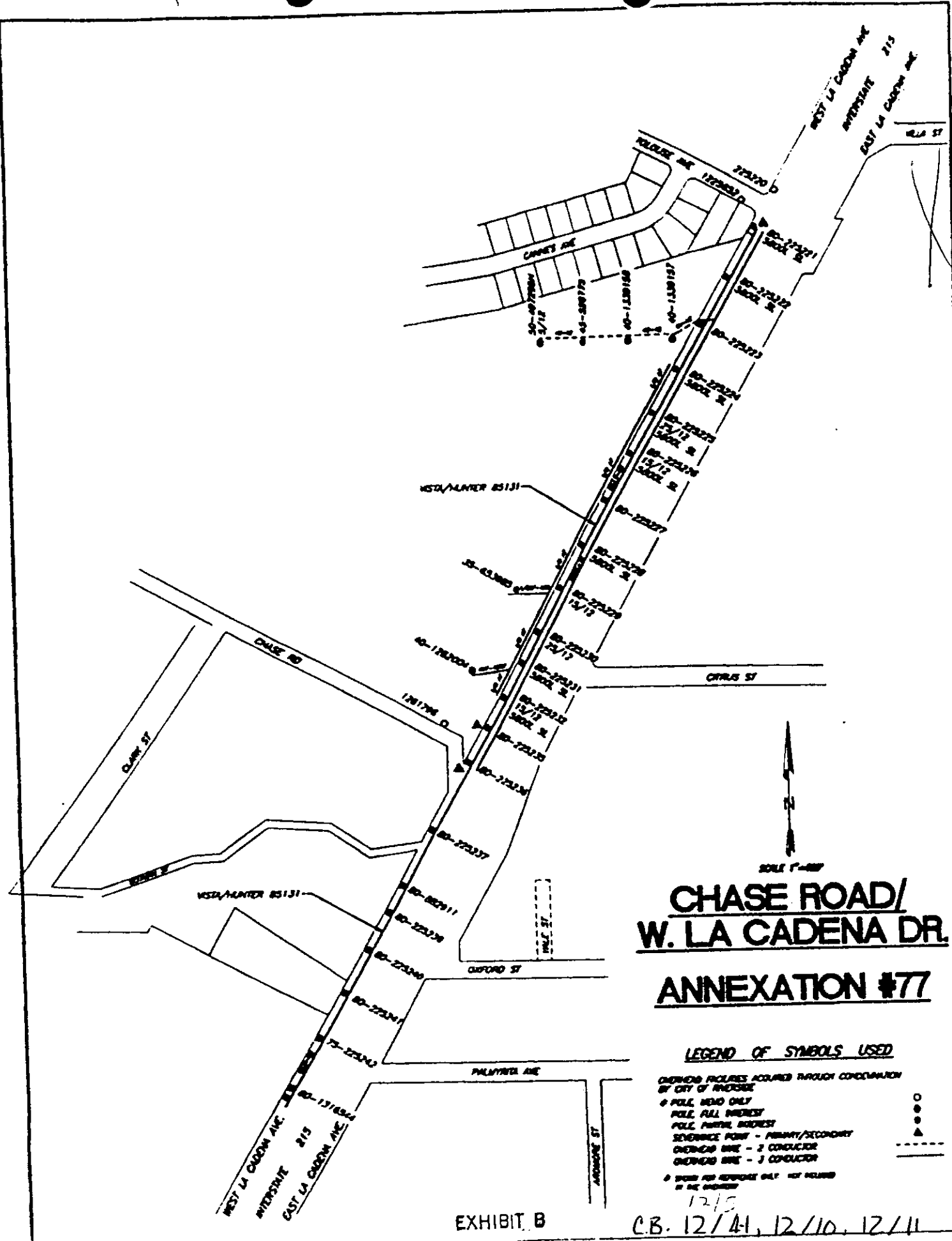
1	each	Service. 6 awg, aluminum duplex
13	each	Service. 4 awg, aluminum triplex
2	each	Service, 1/0 awg, aluminum triplex
1	each	Service. 3-2 awg, insulated aluminum
1	lot	Miscellaneous service related hardware such as: Brackets, connectors, Racks, Clamps, etc.

ACCOUNT NUMBER 370 - METERS

1	each	Meter, wathour, 1-phase, 120v, 5A
6	each	Meter, wathour, 1-phase, 240v, 15A
11	each	Meter, wathour, 1-phase, 240v, 30A
1	lot	Miscellaneous meter related hardware such as: Test Blocks, Test Switches, Covers, Wiring, etc.

ACCOUNT NUMBER 373 - STREET LIGHTING AND SIGNAL SYSTEMS

10	each	Luminaire, HPSV, 5800L, 120V
395	feet	Wire, 6 awg, aluminum duplex
1	lot	Miscellaneous street light related hardware such as: Handholes, Controllers, Grounds, Connectors, Brackets, etc.



**CHASE ROAD/
W. LA CADENA DR.
ANNEXATION #77**

- LEGEND OF SYMBOLS USED**
- OVERHEAD POLES ACQUIRED THROUGH CONDEMNATION BY CITY OF ANDOVER
 - POLE, WEND ONLY
 - POLE, FULL INTEREST
 - POLE, PARTIAL INTEREST
 - SERVICE POINT - PRIMARY/SECONDARY
 - OVERHEAD WIRE - 2 CONDUCTOR
 - OVERHEAD WIRE - 3 CONDUCTOR
 - POINT FOR SERVICE ONLY, NOT RELATED BY THE OVERHEAD

EXHIBIT B

12/5
C.B. 12/4, 12/10, 12/11

CITY OF RIVERSIDE

INTEROFFICE MEMO

RECEIVED

APR 24 1995



Karen E. Lindquist
CITY CLERK

TO: Karen Lindquist
City Clerk

DATE: April 21, 1995

FROM: Kathleen M. Gonzales
Assistant City Attorney

SUBJECT: CITY OF RIVERSIDE V. SOUTHERN CALIFORNIA EDISON COMPANY;
ANNEXATION NO. 77 - CHASE ROAD/WEST LA CADENA (LAFCO NO.
91-71-5); OUR FILE NO. CA 92-1904

Enclosed herewith is the recorded copy of the Final Order of Condemnation in the above-referenced action in eminent domain. The Final Order was recorded as Instrument No. 074908 in the Official Records of Riverside County, California, on March 10, 1995. As the City of Riverside acquired title to the subject property by this Final Order of Condemnation, please give it a City Deed number and maintain in your files.

Kathleen M. Gonzales
Kathleen M. Gonzales
Assistant City Attorney

KMG/sb

Attachment