

Frank A. Totley, et ux) Deed.
 to : Liber: 381 of Deeds, page 91.
 County of Riverside) Recorded: Mar. 28- 1913. *Inst #17*
~~39-1052~~

D E S C R I P T I O N

.....

An Easement for right of way for Public Highway and Road purposes only, in, to and over and upon a strip of land (40) feet wide, lying (20) feet on each side of a center line particularly described as follows:-

Beginning at a point in the West line of Section 32, Township 2 South, Range 4 West, S.B.B.& M., which point is on the Northeast corner of the Southeast 1/4 of the Northeast 1/4 of Section 31, in said Township and Range.

Thence running North on the West boundary line of the said Section 32, 732.58 feet, to a point.

Thence at right angles East, 15 feet to the true point of beginning of the center line hereby described. Said point of beginning, being the Northerly point of beginning of a curve with tangent bearing South.

Thence in a Southerly direction on said curve to the left, radius 843.08 feet, interior angle 12° 10' , a distance of 179.02 feet.

Thence on a curve to the right, radius 843.08 feet, interior angle 8° 24' 30" a distance of 123.72 feet.

Thence South 3° 45' 30" East, 55 feet.

Thence on a curve to the left, radius 240.49 feet, interior angle 37° 39' 30", a distance of 158.06 feet.

Thence South 41° 25' East, 54.71 feet.

Thence on a curve to the left, radius 1521.4 feet, interior angle 7° 32' 30", a distance of 199.7 feet.

Thence on a curve to the right, radius 277.87 feet, interior angle 28° 57', a distance of 140.4 feet.

Thence on a curve to the left, radius 446.95 feet, interior angle 16° 37' a distance of 129.62 feet.

Thence on a curve to the right, radius 829.74 feet, interior angle 20° 35' 30", a distance of 298.17 feet.

Deed 381 - Page 91- Continued .

Thence on a curve to the right, radius 630.64 feet, interior angle 14° 9' , a distance of 155.74 feet.

Thence on a curve to the right, radius 301.68 feet, interior angle 21° 18' , distance of 112.15 feet.

Thence South 19° 25' West, 33.27 feet.

Thence on a curve to the right, radius 686.73 feet, interior angle 13° 47' , distance of 165.2 feet.

Thence on a curve to the right, radius 1174.8 feet, interior angle 7° 30' a distance of 153.78 feet.

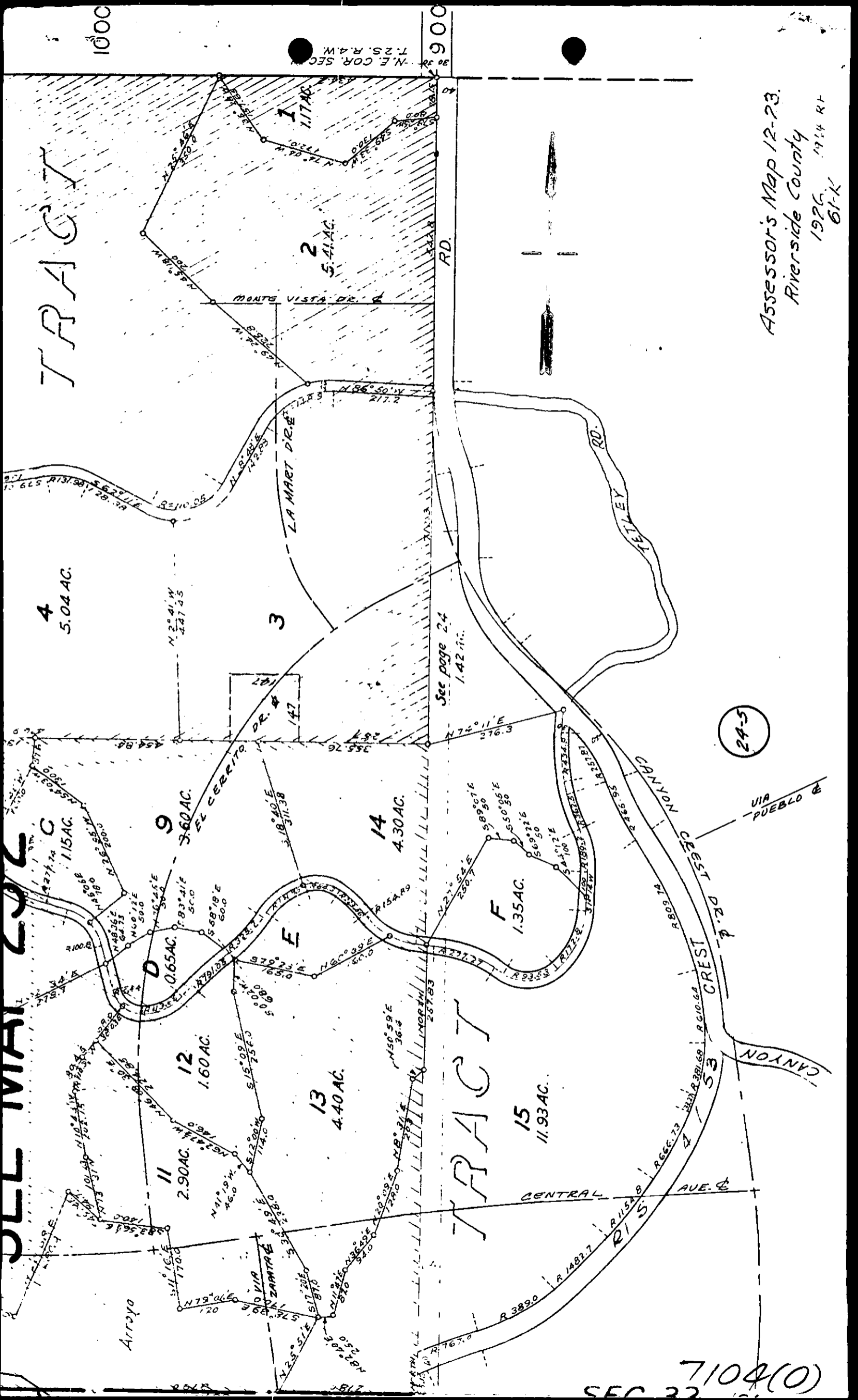
Thence on a curve to the right, radius 1502.7 feet, interior angle 5° 52' a distance of 153.85 feet.

Thence on a curve to the right, radius 409 feet, interior angle 26° 57' a distance of 192.37 feet.

Thence on a curve to the left, radius 747.3 feet, interior angle 9° 20' a distance of 121.73 feet.

Thence South 64° 11' West, 12 feet, to a point in the West line of said Section 32, wh ich point bears North 65.16 feet from the Southwest corner of the Northwest corner of said Section 32, excepting from said strip of land, any portion thereof as herein described , lying Westerly of the West boundary line of the said Section 32.

(Accepted by RA 1052)



Assessor's Map 12-23.
 Riverside County
 1926 1914 RT
 61-K

N.E. COR. SEC.
 T.25. R.4.W.

1000

900