

GRANT OF EASEMENT
(INDIVIDUAL)

WINIFRED G. MAC KINNON

THE GRANTOR ~~JAMES D. AKINJUS and GEORGE H. ARDRESE~~ *Wol*
hereby grant to SOUTHERN CALIFORNIA EDISON COMPANY, a corporation, its successors and assigns, the right to construct, use, maintain, alter, add to, repair, replace and/or remove, in, on, and over the real property hereinafter described, situated in the County of RIVERSIDE State of California, an electric line, consisting of poles, necessary guys and anchors, cross-arms, wires and other fixtures and appliances, for conveying electric energy to be used for light, heat, power, telephone and/or other purposes.

Said real property is described as follows:

The Easterly 6 feet of that portion of Lot 11, Glen Acres Tract, ~~Map~~
plat recorded in Book 11 of Maps, Page 96, records of said County,
described as follows:

Beginning at the Southwesterly corner of said Lot 11, ~~thence~~
East along the Southerly line of said Lot 11, a distance of ~~113.53~~ *113.53*
to the Southeastery corner thereof; thence North ~~15° 39'~~
Easterly line of said Lot 11, a distance of ~~113.53~~ *113.53*
82° 39' 47" West and parallel with the Southerly line of ~~said Lot 11,~~
distance of 357.93 to the Westerly line thereof; thence ~~North~~
West along the Westerly line of said Lot 11, a distance of ~~113.53~~ *113.53*
to the point of beginning.

1ST
334
740
688
7-99
PPVD:
Y_RAG
ATE
1-58

The Grantor, its successors and assigns, and its and their respective agents and employees, shall have the right to trim or top such trees as may endanger or interfere with said electric line, and shall have access to said electric line and every part thereof, at all times, for the purpose of exercising the rights herein granted.

IN WITNESS WHEREOF, the Grantor, ~~has~~ executed this instrument this 8 day of AUGUST, 1952

Witness: _____
Signature of Grantor(s):
Winifred G. Mac Kinnon
Winifred G. Mac Kinnon

STATE OF CALIFORNIA,
COUNTY OF RIVERSIDE

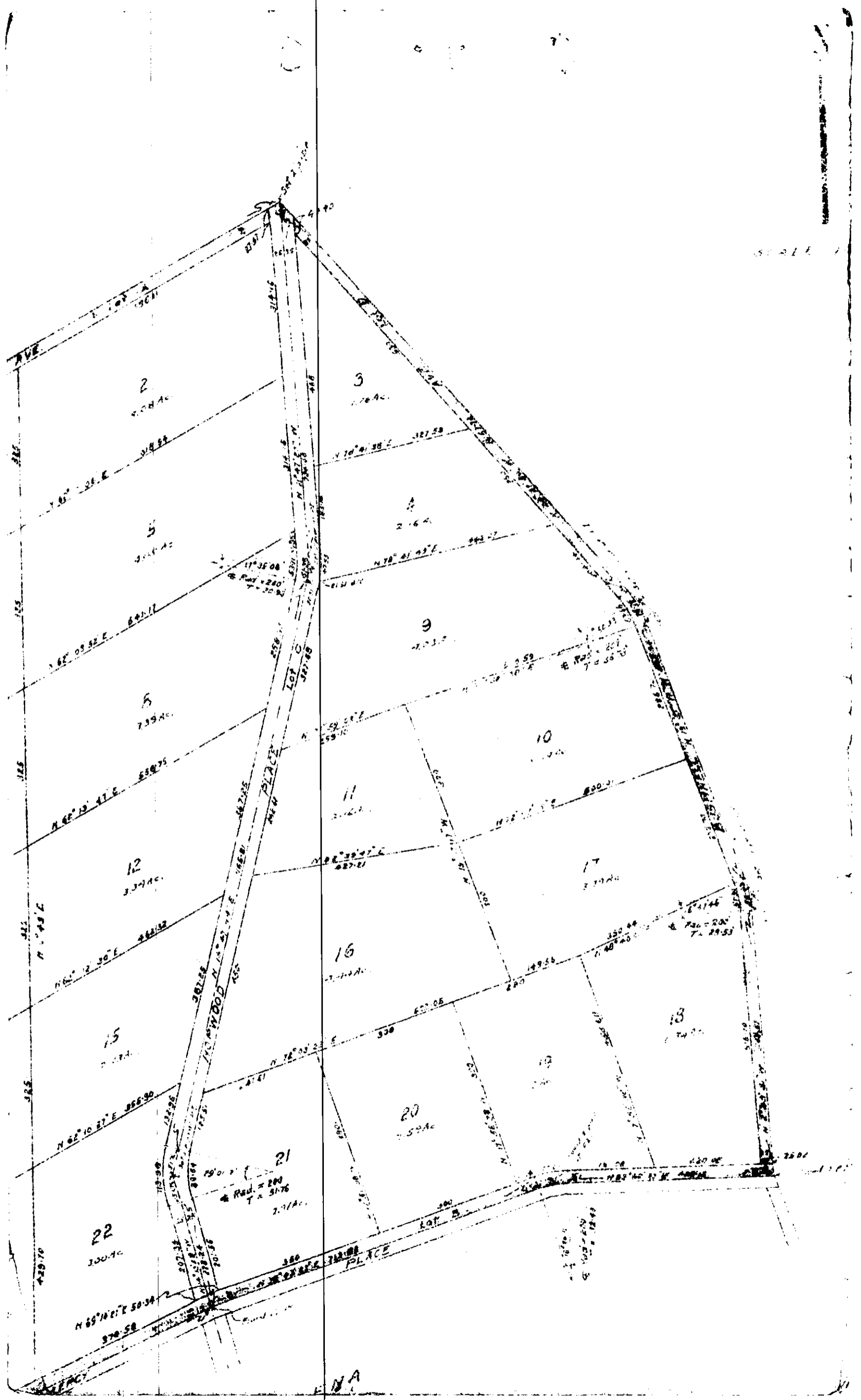
On this 8 day of AUGUST,
A. D. 1952 before me, a Notary Public in
and for said County and State, personally appeared
WINIFRED G. MAC KINNON
known to me to be the person whose name
subscribed to the within Instrument, and
acknowledged to me that he executed the
same.

IN WITNESS WHEREOF, I have heretofore set my
hand and affixed my official seal the day and year in
this certificate first above written.
My Commission Expires June 8, 1957
W. J. [Signature]
Notary Public in and for said County and State.

73240

SPACE BELOW FOR RECORDING OFFICE
RECEIVED FOR RECORD
OCT 10 1958
[Seal and stamps of recording office]

D-7105(1)



AVE

325

325

325

325

325

428.70

2
2.08 AC

3
2.76 AC

4
2.16 AC

5
2.13 AC

6
2.39 AC

7
2.12 AC

8
2.37 AC

9
2.12 AC

10
2.12 AC

11
2.12 AC

12
2.12 AC

13
2.12 AC

14
2.12 AC

15
2.12 AC

16
2.12 AC

17
2.12 AC

18
2.12 AC

19
2.12 AC

20
2.12 AC

21
2.71 AC

22
2.12 AC

23
2.12 AC

24
2.12 AC

25
2.12 AC

26
2.12 AC

27
2.12 AC

28
2.12 AC

29
2.12 AC

30
2.12 AC

31
2.12 AC

32
2.12 AC

33
2.12 AC

34
2.12 AC

35
2.12 AC

36
2.12 AC

37
2.12 AC

38
2.12 AC

39
2.12 AC

40
2.12 AC

41
2.12 AC

42
2.12 AC

43
2.12 AC

44
2.12 AC

45
2.12 AC

46
2.12 AC

47
2.12 AC

48
2.12 AC

49
2.12 AC

50
2.12 AC

51
2.12 AC

52
2.12 AC

53
2.12 AC

54
2.12 AC

55
2.12 AC

56
2.12 AC

57
2.12 AC

58
2.12 AC

59
2.12 AC

60
2.12 AC

61
2.12 AC

62
2.12 AC

63
2.12 AC

64
2.12 AC

65
2.12 AC

66
2.12 AC

67
2.12 AC

68
2.12 AC

69
2.12 AC

70
2.12 AC

71
2.12 AC

72
2.12 AC

73
2.12 AC

74
2.12 AC

75
2.12 AC

76
2.12 AC

77
2.12 AC

78
2.12 AC

79
2.12 AC

80
2.12 AC

81
2.12 AC

82
2.12 AC

83
2.12 AC

84
2.12 AC

85
2.12 AC

86
2.12 AC

87
2.12 AC

88
2.12 AC

89
2.12 AC

90
2.12 AC

91
2.12 AC

92
2.12 AC

93
2.12 AC

94
2.12 AC

95
2.12 AC

96
2.12 AC

97
2.12 AC

98
2.12 AC

99
2.12 AC

100
2.12 AC

101
2.12 AC

102
2.12 AC

103
2.12 AC

104
2.12 AC

105
2.12 AC

106
2.12 AC

107
2.12 AC

108
2.12 AC

109
2.12 AC

110
2.12 AC

111
2.12 AC

112
2.12 AC

113
2.12 AC

114
2.12 AC

115
2.12 AC

116
2.12 AC

117
2.12 AC

118
2.12 AC

119
2.12 AC

120
2.12 AC

121
2.12 AC

122
2.12 AC

123
2.12 AC

124
2.12 AC

125
2.12 AC

126
2.12 AC

127
2.12 AC

128
2.12 AC

129
2.12 AC

130
2.12 AC

131
2.12 AC

132
2.12 AC

133
2.12 AC

134
2.12 AC

135
2.12 AC

136
2.12 AC

137
2.12 AC

138
2.12 AC

139
2.12 AC

140
2.12 AC

141
2.12 AC

142
2.12 AC

143
2.12 AC

144
2.12 AC

145
2.12 AC

146
2.12 AC

147
2.12 AC

148
2.12 AC

149
2.12 AC

150
2.12 AC

151
2.12 AC

152
2.12 AC

153
2.12 AC

154
2.12 AC

155
2.12 AC

156
2.12 AC

157
2.12 AC

158
2.12 AC

159
2.12 AC

160
2.12 AC

161
2.12 AC

162
2.12 AC

163
2.12 AC

164
2.12 AC

165
2.12 AC

166
2.12 AC

167
2.12 AC

168
2.12 AC

169
2.12 AC

170
2.12 AC

171
2.12 AC

172
2.12 AC

173
2.12 AC

174
2.12 AC

175
2.12 AC

176
2.12 AC

177
2.12 AC

178
2.12 AC

179
2.12 AC

180
2.12 AC

181
2.12 AC

182
2.12 AC

183
2.12 AC

184
2.12 AC

185
2.12 AC

186
2.12 AC

187
2.12 AC

188
2.12 AC

189
2.12 AC

190
2.12 AC

191
2.12 AC

192
2.12 AC

193
2.12 AC

194
2.12 AC

195
2.12 AC

196
2.12 AC

197
2.12 AC

198
2.12 AC

199
2.12 AC

200
2.12 AC

201
2.12 AC

202
2.12 AC

203
2.12 AC

204
2.12 AC

205
2.12 AC

206
2.12 AC

207
2.12 AC

208
2.12 AC

209
2.12 AC

210
2.12 AC

211
2.12 AC

212
2.12 AC

213
2.12 AC

214
2.12 AC

215
2.12 AC

216
2.12 AC

217
2.12 AC

218
2.12 AC

219
2.12 AC

220
2.12 AC

221
2.12 AC

222
2.12 AC

223
2.12 AC

224
2.12 AC

225
2.12 AC

226
2.12 AC

227
2.12 AC

228
2.12 AC

229
2.12 AC

230
2.12 AC

231
2.12 AC

232
2.12 AC

233
2.12 AC

234
2.12 AC

235
2.12 AC

236
2.12 AC

237
2.12 AC

238
2.12 AC

239
2.12 AC

240
2.12 AC

241
2.12 AC

242
2.12 AC

243
2.12 AC

244
2.12 AC

245
2.12 AC

246
2.12 AC

247
2.12 AC

248
2.12 AC

249
2.12 AC

250
2.12 AC

251
2.12 AC

252
2.12 AC

253
2.12 AC

254
2.12 AC

255
2.12 AC

256
2.12 AC

257
2.12 AC

258
2.12 AC

259
2.12 AC

260
2.12 AC

261
2.12 AC

262
2.12 AC

263
2.12 AC

264
2.12 AC

265
2.12 AC

266
2.12 AC

267
2.12 AC

268
2.12 AC

269
2.12 AC

270
2.12 AC

271
2.12 AC

272
2.12 AC

273
2.12 AC

274
2.12 AC

275
2.12 AC

276
2.12 AC