

When recorded mail to

City Clerk's Office  
City of Riverside  
City Hall, 3900 Main Street  
Riverside, California 92522

61890

FREE RECORDING

This instrument is for the benefit of the City of Riverside and is entitled to be recorded without fee. (Government Code 6103)

RECEIVED FOR RECORD

MAR 31 1978

45 Min. Past 2:00 clock P.M.  
At Request of

CITY OF RIVERSIDE

Book 1978, Page 61890

Recorded in Official Records of Riverside County, California

W.H. Dwyer Recorder

FEES \$

FOR RECORDER'S OFFICE USE ONLY

Project: La Sierra Avenue Widening  
Parcel 5

GRANT DEED

9311

JACK W. MAYNOR and HELENA A. MAYNOR, husband and wife, as joint tenants

Grantor\_s

FOR A VALUABLE CONSIDERATION, receipt of which is hereby acknowledged, do \_\_\_ hereby grant to the CITY OF RIVERSIDE, a Municipal Corporation, the real property in the City of Riverside, County of Riverside, State of California, described as follows:

That portion of Lot 8 of MAROLO TRACT, on file in Book 21 of Maps, at Page 15 thereof, records of said Riverside County, described as follows:

BEGINNING at the most northerly corner of said Lot ; said corner being in the southwesterly line of La Sierra Avenue;

THENCE South 62° 02' 05" West, along the northwesterly line of said Lot a distance of 10.00 feet to a line which is parallel with and distant 70.00 feet southwesterly, as measured at right angle, from the centerline of La Sierra Avenue;

THENCE South 27° 03' 55" East, along said parallel line 32.73 feet to the beginning of a tangent curve with a radius of 1,648.00 feet and concaving Northeasterly;

THENCE Southeasterly along said curve an arc length of 17.27 feet, thru a central angle of 0° 36' 01" to the southeasterly line of said Lot;

THENCE North 62° 02' 05" East, along said southeasterly line 9.91 feet to the most easterly corner of said Lot;

THENCE North 27° 03' 55" West, along the northeasterly line of said Lot a distance of 50.00 feet to the point of beginning.

Area - 500 square feet.

DESCRIPTION APPROVAL  
By George P. Hill 2/1/78  
Surveyor

APPROVED AS TO FORM  
Baker  
ASST. CITY ATTORNEY

9314

Dated 3-30-78

Witnessed by:  
Harold W. Blakeley

Jack W. Maynor  
JACK W. MAYNOR

Helena A. Maynor  
HELENA A. MAYNOR

CONSENT TO RECORDATION

THIS IS TO CERTIFY that the interest in real property conveyed by this instrument to the City of Riverside, a Municipal Corporation, is hereby attested for and on behalf of said City pursuant to Resolution of the City Council thereof recorded on 12-29-66 as Inst. No. 123460, Riverside County Records, and the Grantee hereby consents to recordation of this instrument through the undersigned.

3-31-78

AM Rice  
Property Services Manager

# La Sierra Avenue

widening from  
Hole Ave. to Arlington Ave.

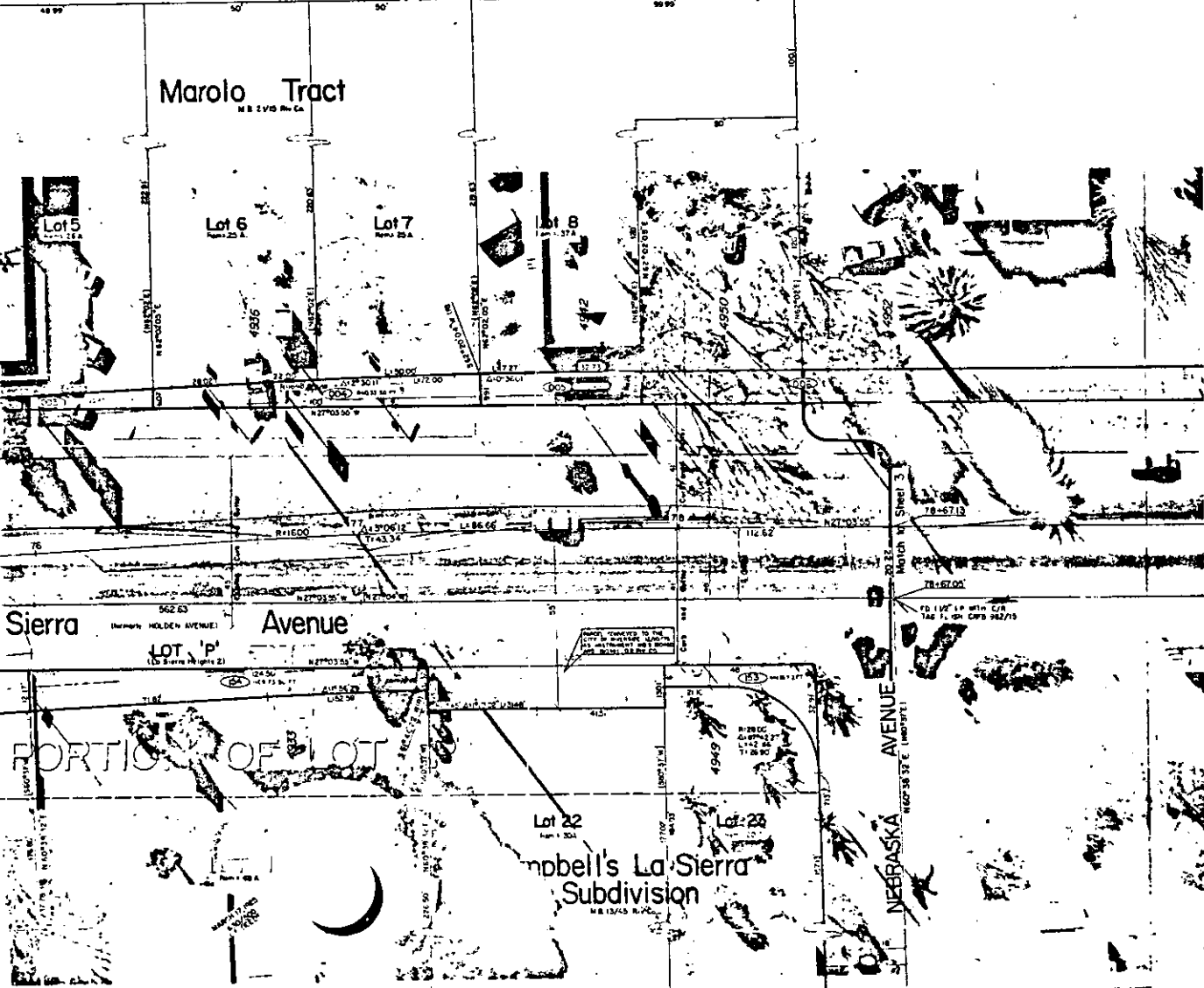
RIGHT-OF-WAY MAP

FAU-M 7011 (002)

R-152 RW  
SHEET 2 of 18

THE BASIS OF BEARINGS IS THE CENTERLINE OF LA SIERRA AVENUE (FORMERLY HOLDEN AVE.) AS SHOWN BY MAP OF LA SIERRA HEIGHTS TRACT NO. 2, RECORDED IN BOOK 7 OF MAPS AT PAGE 66 THEREOF, LYING BETWEEN NORWOOD AVENUE AND GRANERCY PLACE TAKEN AS N73°33'0" W

NAME AND REC DATA	RED AREA FEE	ESMT	REM AREA	TOTAL AREA	PARCEL NO	NAME AND REC DATA	RED AREA FEE	ESMT	REM AREA	TOTAL AREA
PHILORICK, R.E., ET AL 1st 2d 3d 4th 5th 6th 7th 8th 9th 10th 11th 12th 13th 14th 15th 16th 17th 18th 19th 20th 21st 22nd 23rd 24th 25th 26th 27th 28th 29th 30th 31st 32nd 33rd 34th 35th 36th 37th 38th 39th 40th 41st 42nd 43rd 44th 45th 46th 47th 48th 49th 50th 51st 52nd 53rd 54th 55th 56th 57th 58th 59th 60th 61st 62nd 63rd 64th 65th 66th 67th 68th 69th 70th 71st 72nd 73rd 74th 75th 76th 77th 78th 79th 80th 81st 82nd 83rd 84th 85th 86th 87th 88th 89th 90th 91st 92nd 93rd 94th 95th 96th 97th 98th 99th 100th	3.91		0.1550	0.1551	(153)	FABE, WILLIAM O., ET AL 1st 2d 3d 4th 5th 6th 7th 8th 9th 10th 11th 12th 13th 14th 15th 16th 17th 18th 19th 20th 21st 22nd 23rd 24th 25th 26th 27th 28th 29th 30th 31st 32nd 33rd 34th 35th 36th 37th 38th 39th 40th 41st 42nd 43rd 44th 45th 46th 47th 48th 49th 50th 51st 52nd 53rd 54th 55th 56th 57th 58th 59th 60th 61st 62nd 63rd 64th 65th 66th 67th 68th 69th 70th 71st 72nd 73rd 74th 75th 76th 77th 78th 79th 80th 81st 82nd 83rd 84th 85th 86th 87th 88th 89th 90th 91st 92nd 93rd 94th 95th 96th 97th 98th 99th 100th	441.16		0.20	0.21
LIBBY, VELMA R., ET AL 1st 2d 3d 4th 5th 6th 7th 8th 9th 10th 11th 12th 13th 14th 15th 16th 17th 18th 19th 20th 21st 22nd 23rd 24th 25th 26th 27th 28th 29th 30th 31st 32nd 33rd 34th 35th 36th 37th 38th 39th 40th 41st 42nd 43rd 44th 45th 46th 47th 48th 49th 50th 51st 52nd 53rd 54th 55th 56th 57th 58th 59th 60th 61st 62nd 63rd 64th 65th 66th 67th 68th 69th 70th 71st 72nd 73rd 74th 75th 76th 77th 78th 79th 80th 81st 82nd 83rd 84th 85th 86th 87th 88th 89th 90th 91st 92nd 93rd 94th 95th 96th 97th 98th 99th 100th	335.82		0.58	0.58	(154)	BRIDGES, RAYMOND C., ET AL 1st 2d 3d 4th 5th 6th 7th 8th 9th 10th 11th 12th 13th 14th 15th 16th 17th 18th 19th 20th 21st 22nd 23rd 24th 25th 26th 27th 28th 29th 30th 31st 32nd 33rd 34th 35th 36th 37th 38th 39th 40th 41st 42nd 43rd 44th 45th 46th 47th 48th 49th 50th 51st 52nd 53rd 54th 55th 56th 57th 58th 59th 60th 61st 62nd 63rd 64th 65th 66th 67th 68th 69th 70th 71st 72nd 73rd 74th 75th 76th 77th 78th 79th 80th 81st 82nd 83rd 84th 85th 86th 87th 88th 89th 90th 91st 92nd 93rd 94th 95th 96th 97th 98th 99th 100th	1108.73		0.48	0.71
CARTY, ROYAL D., ET AL 1st 2d 3d 4th 5th 6th 7th 8th 9th 10th 11th 12th 13th 14th 15th 16th 17th 18th 19th 20th 21st 22nd 23rd 24th 25th 26th 27th 28th 29th 30th 31st 32nd 33rd 34th 35th 36th 37th 38th 39th 40th 41st 42nd 43rd 44th 45th 46th 47th 48th 49th 50th 51st 52nd 53rd 54th 55th 56th 57th 58th 59th 60th 61st 62nd 63rd 64th 65th 66th 67th 68th 69th 70th 71st 72nd 73rd 74th 75th 76th 77th 78th 79th 80th 81st 82nd 83rd 84th 85th 86th 87th 88th 89th 90th 91st 92nd 93rd 94th 95th 96th 97th 98th 99th 100th	840.33		0.50	0.51	(155)	GILBERT, JAMES B., ET AL 1st 2d 3d 4th 5th 6th 7th 8th 9th 10th 11th 12th 13th 14th 15th 16th 17th 18th 19th 20th 21st 22nd 23rd 24th 25th 26th 27th 28th 29th 30th 31st 32nd 33rd 34th 35th 36th 37th 38th 39th 40th 41st 42nd 43rd 44th 45th 46th 47th 48th 49th 50th 51st 52nd 53rd 54th 55th 56th 57th 58th 59th 60th 61st 62nd 63rd 64th 65th 66th 67th 68th 69th 70th 71st 72nd 73rd 74th 75th 76th 77th 78th 79th 80th 81st 82nd 83rd 84th 85th 86th 87th 88th 89th 90th 91st 92nd 93rd 94th 95th 96th 97th 98th 99th 100th	1687.37		0.48	0.49
LIBBY, VELMA R., ET AL 1st 2d 3d 4th 5th 6th 7th 8th 9th 10th 11th 12th 13th 14th 15th 16th 17th 18th 19th 20th 21st 22nd 23rd 24th 25th 26th 27th 28th 29th 30th 31st 32nd 33rd 34th 35th 36th 37th 38th 39th 40th 41st 42nd 43rd 44th 45th 46th 47th 48th 49th 50th 51st 52nd 53rd 54th 55th 56th 57th 58th 59th 60th 61st 62nd 63rd 64th 65th 66th 67th 68th 69th 70th 71st 72nd 73rd 74th 75th 76th 77th 78th 79th 80th 81st 82nd 83rd 84th 85th 86th 87th 88th 89th 90th 91st 92nd 93rd 94th 95th 96th 97th 98th 99th 100th	300		0.97	0.381	(156)	ALLEN, L.M. 1st 2d 3d 4th 5th 6th 7th 8th 9th 10th 11th 12th 13th 14th 15th 16th 17th 18th 19th 20th 21st 22nd 23rd 24th 25th 26th 27th 28th 29th 30th 31st 32nd 33rd 34th 35th 36th 37th 38th 39th 40th 41st 42nd 43rd 44th 45th 46th 47th 48th 49th 50th 51st 52nd 53rd 54th 55th 56th 57th 58th 59th 60th 61st 62nd 63rd 64th 65th 66th 67th 68th 69th 70th 71st 72nd 73rd 74th 75th 76th 77th 78th 79th 80th 81st 82nd 83rd 84th 85th 86th 87th 88th 89th 90th 91st 92nd 93rd 94th 95th 96th 97th 98th 99th 100th	840.22		0.20	0.22
VALONE, MARIO F., ET AL 1st 2d 3d 4th 5th 6th 7th 8th 9th 10th 11th 12th 13th 14th 15th 16th 17th 18th 19th 20th 21st 22nd 23rd 24th 25th 26th 27th 28th 29th 30th 31st 32nd 33rd 34th 35th 36th 37th 38th 39th 40th 41st 42nd 43rd 44th 45th 46th 47th 48th 49th 50th 51st 52nd 53rd 54th 55th 56th 57th 58th 59th 60th 61st 62nd 63rd 64th 65th 66th 67th 68th 69th 70th 71st 72nd 73rd 74th 75th 76th 77th 78th 79th 80th 81st 82nd 83rd 84th 85th 86th 87th 88th 89th 90th 91st 92nd 93rd 94th 95th 96th 97th 98th 99th 100th	SEE SHEET 3				(157)	KIRSCHMEYER, HANS, ET AL 1st 2d 3d 4th 5th 6th 7th 8th 9th 10th 11th 12th 13th 14th 15th 16th 17th 18th 19th 20th 21st 22nd 23rd 24th 25th 26th 27th 28th 29th 30th 31st 32nd 33rd 34th 35th 36th 37th 38th 39th 40th 41st 42nd 43rd 44th 45th 46th 47th 48th 49th 50th 51st 52nd 53rd 54th 55th 56th 57th 58th 59th 60th 61st 62nd 63rd 64th 65th 66th 67th 68th 69th 70th 71st 72nd 73rd 74th 75th 76th 77th 78th 79th 80th 81st 82nd 83rd 84th 85th 86th 87th 88th 89th 90th 91st 92nd 93rd 94th 95th 96th 97th 98th 99th 100th	224		0.22	0.24



Public Works Director, City of Riverside  
 Approved by the City Engineer  
 J. R. Sanchez  
 City Engineer, Caltrans  
 Reduced Plans