



ENCROACHMENT PERMIT
Storm Drain Connection
 City of Riverside - Public Works Dept.
 951-826-5341

Issuance of this permit shall not be construed as a waiver of any other applicable permit or requirement, and is only revocable permission to use the land for the purpose described.

Owner: FRESH & EASY NEIGHBORHOOD MARKET INC
Location: 1730 EASTRIDGE AV RIVE
A.P.N.:

Encroachment: CONNECT TO CITY STORM DRAIN PER ATTACHED EXHIBIT

The above-described encroachment being shown on Exhibit A attached hereto.

Upon issuance of this permit, I agree to comply with the attached terms and conditions.

Date: 6-27-11

By: [Signature]

Date: _____

By: _____

Applicant

GFB-FRIEDRICH & ASSOC., INC.
 6529 RIVERSIDE AVE., SUITE 230
 RIVERSIDE, CA
 92506
 909/781-0811

Contractor/Developer

ENCROACHMENT PERMIT APPROVAL

This permit has been reviewed and approved by the Departments listed below provided the attached terms and conditions are adhered to:

- P/W ENGINEERING
- P/W TRAFFIC
- P/U WATER

FINAL APPROVAL

Date: 4/28/11

[Signature]
 City Engineer

THIS PERMIT IS NOT VALID UNTIL ISSUED AND POSTED IN CITY RECORDS

Issued by: Nicole Clark

Dated: 6/28/11



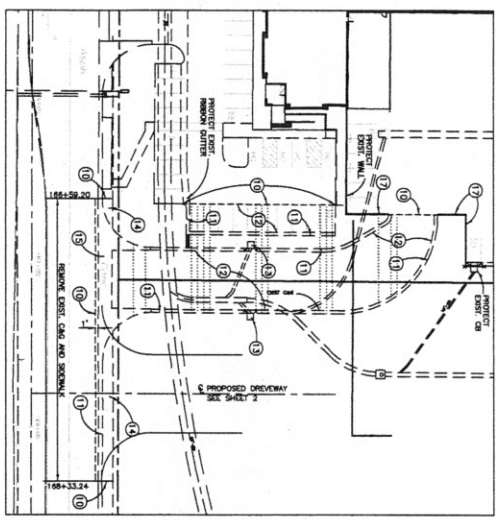
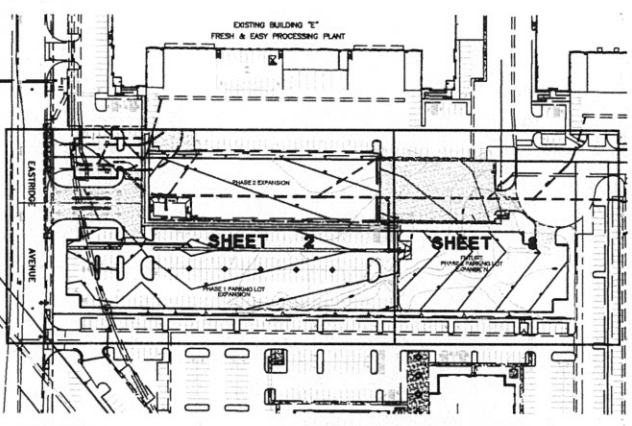
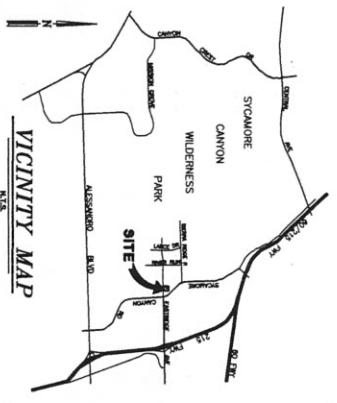
City of Riverside

The following are requirements that need to be met for your permit #PW11-0201 .

- 1: Permittee acknowledges that the area of encroachment is owned or controlled by the City of Riverside.
- 2: Permittee acknowledges that the described property could be needed for a proposed or planned public improvement and the City may revoke this permit. Upon written notice of revocation, the permittee shall, within the time prescribed by the City, remove all improvements placed, constructed or maintained. If the permittee fails to abide by the removal order of the City, the City shall have the right to remove and destroy the improvements without reimbursement to the permittee. The cost of such removal shall be paid by the permittee to the City and shall constitute a debt owed to the City.
- 3: Permittee waives the right of claim, loss, damage or action against the City resulting from revocation, termination, removal of improvements or any action of the City, its officers, agents or employees taken in accordance with the terms herein.
- 4: If the Public Works Director of the City of Riverside finds that the permittee is in default of the terms of this permit, that shall be cause for revocation.
- 5: Permittee herewith agrees to hold the City of Riverside harmless from and against all claims demands, costs, losses, damages, injuries, actions for damages and/or injuries, and liability in connection with the construction, encroachment, and/or maintenance to be done by permittee within the described property.
- 6: Prior to any construction taking place on City controlled property, permittee shall obtain a Construction Permit or Street Opening Permit from the City Public Works Department.
- 7: The permittee agrees to insure that construction of their improvements will not interfere in any way with any existing City or utility facilities.
- 8: Permittee acknowledges that existing city or utility facilities will require future maintenance, reconstruction, and revisions and that facilities may be added, any of which may result in removal or alteration of the permittee's improvements without reimbursement to the permittee.
- 9: Prior to construction, permittee shall contact Underground Service Alert to field locate existing utility lines. Any conflicts discovered will void the permit until acceptable revisions are made. It shall be Permittee's responsibility to determine the location and required clearances from all public and private utility, sewer and drainage facilities prior to drilling and shall only drill in compliance with such clearance requirements.
- 10: All on-site catch basins and inlets must have a properly installed and maintained drainage water filtration system to Public Works Specifications.
- 11: Permittee acknowledges that there are existing public works and public utility facilities that may interfere with the proposed improvement. All existing utilities, sewers and storm drains must be field located (pot-holed) prior to installation of the proposed facilities.
- 12: Permittee acknowledges that all maintenance of the drain line between its connection with the line in the street and the right of way line is the responsibility of the permittee.

E11-0201

FRESH & EASY PARKING LOT EXPANSION PRECISE GRADING PLAN



CONSTRUCTION NOTES

1. MIN. 3" 42' PAVEMENT OVER 4" ASPHALT BASE
2. CONCRETE 7" P.C.C. FINISHED ON SET COMPACTED SUBGRADE
3. CONCRETE 6" P.C.C. OVER PER. CITY OF PASADENA STD. 200 TYPE 1
4. CONCRETE P.C.C. RIBBON CUTTER PER CITY OF PASADENA STD. 200 TYPE 1
5. CONCRETE CATCH BASIN PER CITY OF PASADENA STD. 304 (TYPE PER PLAN)
6. WITH 18" MIN. "TYPICAL" (SEE EQUAL) FILTER MESH
7. ASBESTOS EXISTING REMOVED TO GRADE
8. CONCRETE 6" CURB & GUTTER PER CITY OF PASADENA STD. 200 TYPE 1
9. CONCRETE 6" CURB & GUTTER PER CITY OF PASADENA STD. 304 (TYPE PER PLAN)
10. CONCRETE CATCH BASIN PER CITY OF PASADENA STD. 400 WITH INLET
11. CONCRETE 6" FINISHED ON SET COMPACTED SUBGRADE
12. SANDWICH EXISTING PAVEMENT ON CURB & GUTTER AND SIDEWALK
13. REMOVE EXISTING CURB OF CURB
14. REMOVE EXISTING PAVEMENT
15. REMOVE EXISTING SIDEWALK
16. REMOVE EXISTING CURB DRAIN & RAKE DRAIN: STORM DRAIN WITH P.C.C.
17. REMOVE EXISTING SIDEWALK
18. REMOVE EXISTING SIDEWALK
19. CONCRETE SANDWICH PER CITY STD. 323 (MINI PER PLAN)
20. REMOVE EXISTING CURB, 12"-18" MIN.
21. CONCRETE JOINTION STRUCTURE, No. 4 PER CITY OF PASADENA STD. 423 (EDGE 3)
22. CONCRETE 18" HOLE STORM DRAIN (MINOR 14"-4" OR EQUAL)
23. CUT IN 30" X 18" HOLE W/TC TO DRAIN, 30" HOLE STOPWORK
24. CUT IN 24" X 18" HOLE W/TC TO DRAIN, 30" HOLE STOPWORK
25. 18" X 18" HOLE W/TC
26. 18" X 18" HOLE W/TC
27. CONCRETE INLET TYPE X PER 822.62. STD. GRID 2, 108 AND EQUAL ON SHT 4
28. 18" X 18" X 18" HOLE W/TC
29. INSTALL 4" CHALKLINE GRADE WITH ACCESS CURB FOR MAINTENANCE
30. MIN. 4" 42' PAVEMENT OVER 4" COMPACTED SUBGRADE
31. CONCRETE 12" WIDE P.C.C. W/TK. FINISHED ON BACK OF CURB

INDEX MAP

GENERAL NOTES

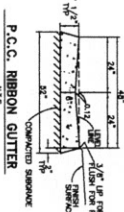
THE CONTRACTOR SHALL OBTAIN ALL NECESSARY PERMITS AND APPROVALS FROM THE CITY OF PASADENA AND THE PASADENA WATER DEPARTMENT. THE CONTRACTOR SHALL BE RESPONSIBLE FOR OBTAINING ALL NECESSARY PERMITS AND APPROVALS FROM THE CITY OF PASADENA AND THE PASADENA WATER DEPARTMENT. THE CONTRACTOR SHALL BE RESPONSIBLE FOR OBTAINING ALL NECESSARY PERMITS AND APPROVALS FROM THE CITY OF PASADENA AND THE PASADENA WATER DEPARTMENT.

LEGAL DESCRIPTION

PARCEL 3 & A PORTION OF PARCEL 7 OF BLOCK 200, TRACT 117, NUTCRACK RESERVE OF A.P.M. 283-390-040-011

REFERENCE DRAWINGS

CITY OF PASADENA, 1991



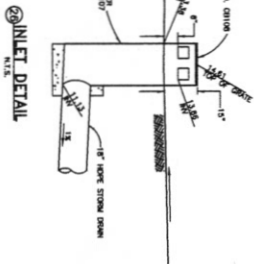
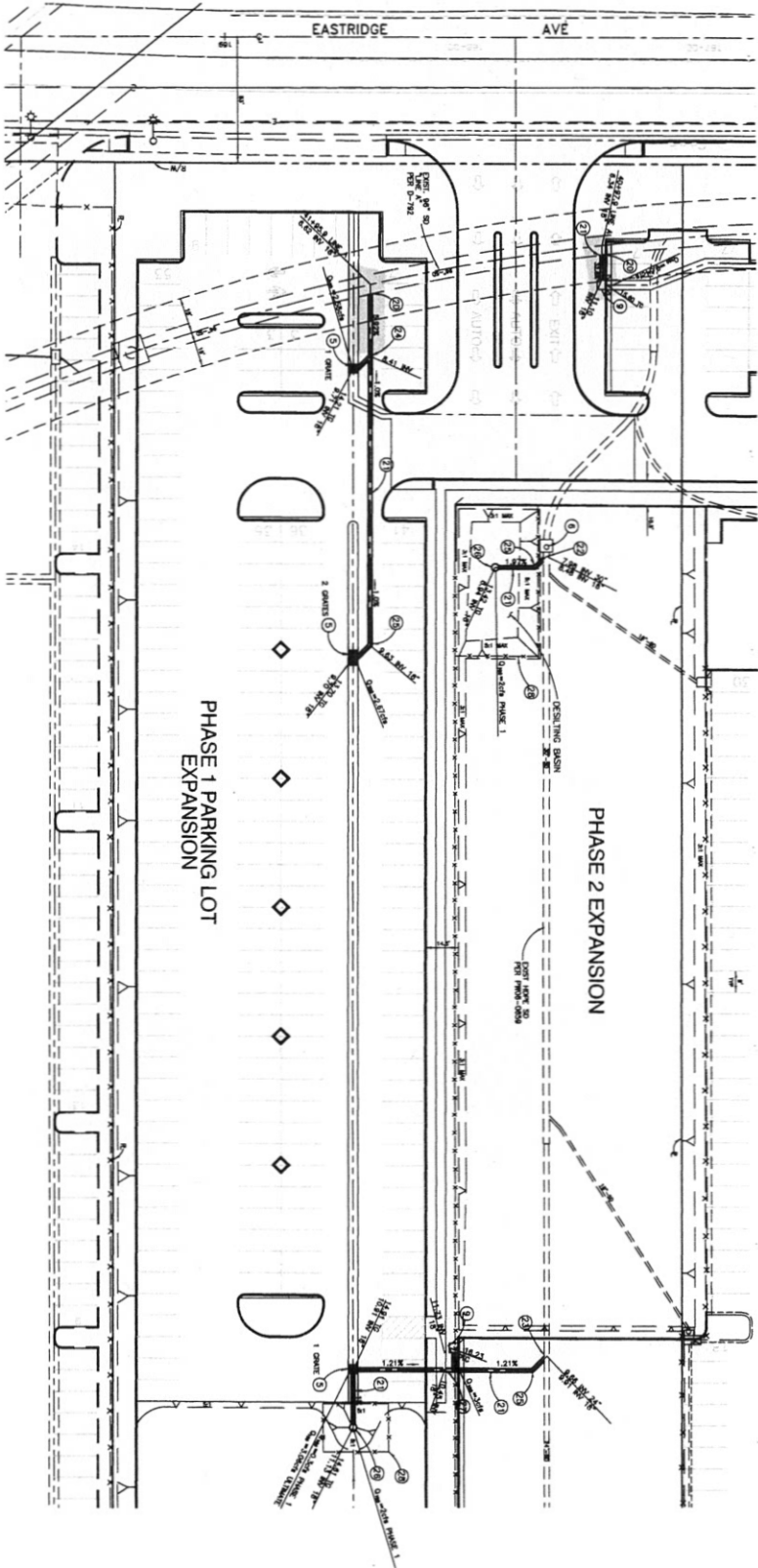
INDEX OF SHEETS

1. TITLE SHEET
2. PRECISE GRADING PLAN SHEET
3. PRECISE GRADING PLAN SHEET
4. STORM DRAIN IMPROVEMENTS
5. STORM DRAIN CONTROL PLAN SHEET

SITE ACREAGE: 4.56 AC. DISTURBED ACREAGE: 4.56 AC.

LEGEND

4" W/TK	4" W/TK	4" W/TK	4" W/TK
6" W/TK	6" W/TK	6" W/TK	6" W/TK
8" W/TK	8" W/TK	8" W/TK	8" W/TK
10" W/TK	10" W/TK	10" W/TK	10" W/TK
12" W/TK	12" W/TK	12" W/TK	12" W/TK
14" W/TK	14" W/TK	14" W/TK	14" W/TK
16" W/TK	16" W/TK	16" W/TK	16" W/TK
18" W/TK	18" W/TK	18" W/TK	18" W/TK
20" W/TK	20" W/TK	20" W/TK	20" W/TK
24" W/TK	24" W/TK	24" W/TK	24" W/TK
30" W/TK	30" W/TK	30" W/TK	30" W/TK
36" W/TK	36" W/TK	36" W/TK	36" W/TK
42" W/TK	42" W/TK	42" W/TK	42" W/TK
48" W/TK	48" W/TK	48" W/TK	48" W/TK
54" W/TK	54" W/TK	54" W/TK	54" W/TK
60" W/TK	60" W/TK	60" W/TK	60" W/TK
66" W/TK	66" W/TK	66" W/TK	66" W/TK
72" W/TK	72" W/TK	72" W/TK	72" W/TK
78" W/TK	78" W/TK	78" W/TK	78" W/TK
84" W/TK	84" W/TK	84" W/TK	84" W/TK
90" W/TK	90" W/TK	90" W/TK	90" W/TK
96" W/TK	96" W/TK	96" W/TK	96" W/TK
102" W/TK	102" W/TK	102" W/TK	102" W/TK
108" W/TK	108" W/TK	108" W/TK	108" W/TK
114" W/TK	114" W/TK	114" W/TK	114" W/TK
120" W/TK	120" W/TK	120" W/TK	120" W/TK
126" W/TK	126" W/TK	126" W/TK	126" W/TK
132" W/TK	132" W/TK	132" W/TK	132" W/TK
138" W/TK	138" W/TK	138" W/TK	138" W/TK
144" W/TK	144" W/TK	144" W/TK	144" W/TK
150" W/TK	150" W/TK	150" W/TK	150" W/TK
156" W/TK	156" W/TK	156" W/TK	156" W/TK
162" W/TK	162" W/TK	162" W/TK	162" W/TK
168" W/TK	168" W/TK	168" W/TK	168" W/TK
174" W/TK	174" W/TK	174" W/TK	174" W/TK
180" W/TK	180" W/TK	180" W/TK	180" W/TK
186" W/TK	186" W/TK	186" W/TK	186" W/TK
192" W/TK	192" W/TK	192" W/TK	192" W/TK
198" W/TK	198" W/TK	198" W/TK	198" W/TK
204" W/TK	204" W/TK	204" W/TK	204" W/TK
210" W/TK	210" W/TK	210" W/TK	210" W/TK
216" W/TK	216" W/TK	216" W/TK	216" W/TK
222" W/TK	222" W/TK	222" W/TK	222" W/TK
228" W/TK	228" W/TK	228" W/TK	228" W/TK
234" W/TK	234" W/TK	234" W/TK	234" W/TK
240" W/TK	240" W/TK	240" W/TK	240" W/TK
246" W/TK	246" W/TK	246" W/TK	246" W/TK
252" W/TK	252" W/TK	252" W/TK	252" W/TK
258" W/TK	258" W/TK	258" W/TK	258" W/TK
264" W/TK	264" W/TK	264" W/TK	264" W/TK
270" W/TK	270" W/TK	270" W/TK	270" W/TK
276" W/TK	276" W/TK	276" W/TK	276" W/TK
282" W/TK	282" W/TK	282" W/TK	282" W/TK
288" W/TK	288" W/TK	288" W/TK	288" W/TK
294" W/TK	294" W/TK	294" W/TK	294" W/TK
300" W/TK	300" W/TK	300" W/TK	300" W/TK
306" W/TK	306" W/TK	306" W/TK	306" W/TK
312" W/TK	312" W/TK	312" W/TK	312" W/TK
318" W/TK	318" W/TK	318" W/TK	318" W/TK
324" W/TK	324" W/TK	324" W/TK	324" W/TK
330" W/TK	330" W/TK	330" W/TK	330" W/TK
336" W/TK	336" W/TK	336" W/TK	336" W/TK
342" W/TK	342" W/TK	342" W/TK	342" W/TK
348" W/TK	348" W/TK	348" W/TK	348" W/TK
354" W/TK	354" W/TK	354" W/TK	354" W/TK
360" W/TK	360" W/TK	360" W/TK	360" W/TK
366" W/TK	366" W/TK	366" W/TK	366" W/TK
372" W/TK	372" W/TK	372" W/TK	372" W/TK
378" W/TK	378" W/TK	378" W/TK	378" W/TK
384" W/TK	384" W/TK	384" W/TK	384" W/TK
390" W/TK	390" W/TK	390" W/TK	390" W/TK
396" W/TK	396" W/TK	396" W/TK	396" W/TK
402" W/TK	402" W/TK	402" W/TK	402" W/TK
408" W/TK	408" W/TK	408" W/TK	408" W/TK
414" W/TK	414" W/TK	414" W/TK	414" W/TK
420" W/TK	420" W/TK	420" W/TK	420" W/TK
426" W/TK	426" W/TK	426" W/TK	426" W/TK
432" W/TK	432" W/TK	432" W/TK	432" W/TK
438" W/TK	438" W/TK	438" W/TK	438" W/TK
444" W/TK	444" W/TK	444" W/TK	444" W/TK
450" W/TK	450" W/TK	450" W/TK	450" W/TK
456" W/TK	456" W/TK	456" W/TK	456" W/TK
462" W/TK	462" W/TK	462" W/TK	462" W/TK
468" W/TK	468" W/TK	468" W/TK	468" W/TK
474" W/TK	474" W/TK	474" W/TK	474" W/TK
480" W/TK	480" W/TK	480" W/TK	480" W/TK
486" W/TK	486" W/TK	486" W/TK	486" W/TK
492" W/TK	492" W/TK	492" W/TK	492" W/TK
498" W/TK	498" W/TK	498" W/TK	498" W/TK
504" W/TK	504" W/TK	504" W/TK	504" W/TK
510" W/TK	510" W/TK	510" W/TK	510" W/TK
516" W/TK	516" W/TK	516" W/TK	516" W/TK
522" W/TK	522" W/TK	522" W/TK	522" W/TK
528" W/TK	528" W/TK	528" W/TK	528" W/TK
534" W/TK	534" W/TK	534" W/TK	534" W/TK
540" W/TK	540" W/TK	540" W/TK	540" W/TK
546" W/TK	546" W/TK	546" W/TK	546" W/TK
552" W/TK	552" W/TK	552" W/TK	552" W/TK
558" W/TK	558" W/TK	558" W/TK	558" W/TK
564" W/TK	564" W/TK	564" W/TK	564" W/TK
570" W/TK	570" W/TK	570" W/TK	570" W/TK
576" W/TK	576" W/TK	576" W/TK	576" W/TK
582" W/TK	582" W/TK	582" W/TK	582" W/TK
588" W/TK	588" W/TK	588" W/TK	588" W/TK
594" W/TK	594" W/TK	594" W/TK	594" W/TK
600" W/TK	600" W/TK	600" W/TK	600" W/TK
606" W/TK	606" W/TK	606" W/TK	606" W/TK
612" W/TK	612" W/TK	612" W/TK	612" W/TK
618" W/TK	618" W/TK	618" W/TK	618" W/TK
624" W/TK	624" W/TK	624" W/TK	624" W/TK
630" W/TK	630" W/TK	630" W/TK	630" W/TK
636" W/TK	636" W/TK	636" W/TK	636" W/TK
642" W/TK	642" W/TK	642" W/TK	642" W/TK
648" W/TK	648" W/TK	648" W/TK	648" W/TK
654" W/TK	654" W/TK	654" W/TK	654" W/TK
660" W/TK	660" W/TK	660" W/TK	660" W/TK
666" W/TK	666" W/TK	666" W/TK	666" W/TK
672" W/TK	672" W/TK	672" W/TK	672" W/TK
678" W/TK	678" W/TK	678" W/TK	678" W/TK
684" W/TK	684" W/TK	684" W/TK	684" W/TK
690" W/TK	690" W/TK	690" W/TK	690" W/TK
696" W/TK	696" W/TK	696" W/TK	696" W/TK
702" W/TK	702" W/TK	702" W/TK	702" W/TK
708" W/TK	708" W/TK	708" W/TK	708" W/TK
714" W/TK	714" W/TK	714" W/TK	714" W/TK
720" W/TK	720" W/TK	720" W/TK	720" W/TK
726" W/TK	726" W/TK	726" W/TK	726" W/TK
732" W/TK	732" W/TK	732" W/TK	732" W/TK
738" W/TK	738" W/TK	738" W/TK	738" W/TK
744" W/TK	744" W/TK	744" W/TK	744" W/TK
750" W/TK	750" W/TK	750" W/TK	750" W/TK
756" W/TK	756" W/TK	756" W/TK	756" W/TK
762" W/TK	762" W/TK	762" W/TK	762" W/TK
768" W/TK	768" W/TK	768" W/TK	768" W/TK
774" W/TK	774" W/TK	774" W/TK	774" W/TK
780" W/TK	780" W/TK	780" W/TK	780" W/TK
786" W/TK	786" W/TK	786" W/TK	786" W/TK
792" W/TK	792" W/TK	792" W/TK	792" W/TK
798" W/TK	798" W/TK	798" W/TK	798" W/TK
804" W/TK	804" W/TK	804" W/TK	804" W/TK
810" W/TK	810" W/TK	810" W/TK	810" W/TK
816" W/TK	816" W/TK	816" W/TK	816" W/TK
822" W/TK	822" W/TK	822" W/TK	822" W/TK
828" W/TK	828" W/TK	828" W/TK	828" W/TK
834" W/TK	834" W/TK	834" W/TK	834" W/TK
840" W/TK	840" W/TK	840" W/TK	840" W/TK
846" W/TK	846" W/TK	846" W/TK	846" W/TK
852" W/TK	852" W/TK	852" W/TK	852" W/TK
858" W/TK	858" W/TK	858" W/TK	858" W/TK
864" W/TK	864" W/TK	864" W/TK	864" W/TK
870" W/TK	870" W/TK	870" W/TK	870" W/TK
876" W/TK	876" W/TK	876" W/TK	876" W/TK
882" W/TK	882" W/TK	882" W/TK	882" W/TK
888" W/TK	888" W/TK	888" W/TK	888" W/TK
894" W/TK	894" W/TK	894" W/TK	894" W/TK
900" W/TK	900" W/TK	900" W/TK	900" W/TK
906" W/TK	906" W/TK	906" W/TK	906" W/TK
912" W/TK	912" W/TK	912" W/TK	912" W/TK
918" W/TK	918" W/TK	918" W/TK	918" W/TK
924" W/TK	924" W/TK	924" W/TK	924" W/TK
930" W/TK	930" W/TK	930" W/TK	930" W/TK
936" W/TK	936" W/TK	936" W/TK	936" W/TK
942" W/TK	942" W/TK	942" W/TK	942" W/TK
948" W/TK	948" W/TK	948" W/TK	948" W/TK
954" W/TK	954" W/TK	954" W/TK	954" W/TK
960" W/TK	960" W/TK	960" W/TK	960" W/TK
966" W/TK	966" W/TK	966" W/TK	966" W/TK
972" W/TK	972" W/TK	972" W/TK	972" W/TK
978" W/TK	978" W/TK	978" W/TK	978" W/TK
984" W/TK	984" W/TK	984" W/TK	984" W/TK
990" W/TK	990" W/TK	990" W/TK	990" W/TK
996" W/TK	996" W/TK	996" W/TK	996" W/TK
1002" W/TK	1002" W/TK	1002" W/TK	1002" W/TK
1008" W/TK	1008" W/TK	1008" W/TK	1008" W/TK
1014" W/TK	1014" W/TK	1014" W/TK	1014" W/TK
1020" W/TK	1020" W/TK	1020" W/TK	1020"



CONSTRUCTION NOTES

- 1) CONSTRUCT CONCRETE DRIVE WITH 4\"/>
- 2) CONSTRUCT 12\"/>
- 3) CONSTRUCT 12\"/>
- 4) CONSTRUCT 12\"/>
- 5) CONSTRUCT 12\"/>
- 6) CONSTRUCT 12\"/>
- 7) CONSTRUCT 12\"/>
- 8) CONSTRUCT 12\"/>
- 9) CONSTRUCT 12\"/>
- 10) CONSTRUCT 12\"/>
- 11) CONSTRUCT 12\"/>
- 12) CONSTRUCT 12\"/>
- 13) CONSTRUCT 12\"/>
- 14) CONSTRUCT 12\"/>
- 15) CONSTRUCT 12\"/>
- 16) CONSTRUCT 12\"/>
- 17) CONSTRUCT 12\"/>
- 18) CONSTRUCT 12\"/>
- 19) CONSTRUCT 12\"/>
- 20) CONSTRUCT 12\"/>
- 21) CONSTRUCT 12\"/>
- 22) CONSTRUCT 12\"/>
- 23) CONSTRUCT 12\"/>
- 24) CONSTRUCT 12\"/>
- 25) CONSTRUCT 12\"/>
- 26) CONSTRUCT 12\"/>
- 27) CONSTRUCT 12\"/>
- 28) CONSTRUCT 12\"/>
- 29) CONSTRUCT 12\"/>
- 30) CONSTRUCT 12\"/>
- 31) CONSTRUCT 12\"/>
- 32) CONSTRUCT 12\"/>
- 33) CONSTRUCT 12\"/>
- 34) CONSTRUCT 12\"/>
- 35) CONSTRUCT 12\"/>
- 36) CONSTRUCT 12\"/>
- 37) CONSTRUCT 12\"/>
- 38) CONSTRUCT 12\"/>
- 39) CONSTRUCT 12\"/>
- 40) CONSTRUCT 12\"/>
- 41) CONSTRUCT 12\"/>
- 42) CONSTRUCT 12\"/>
- 43) CONSTRUCT 12\"/>
- 44) CONSTRUCT 12\"/>
- 45) CONSTRUCT 12\"/>
- 46) CONSTRUCT 12\"/>
- 47) CONSTRUCT 12\"/>
- 48) CONSTRUCT 12\"/>
- 49) CONSTRUCT 12\"/>
- 50) CONSTRUCT 12\"/>
- 51) CONSTRUCT 12\"/>
- 52) CONSTRUCT 12\"/>
- 53) CONSTRUCT 12\"/>
- 54) CONSTRUCT 12\"/>
- 55) CONSTRUCT 12\"/>
- 56) CONSTRUCT 12\"/>
- 57) CONSTRUCT 12\"/>
- 58) CONSTRUCT 12\"/>
- 59) CONSTRUCT 12\"/>
- 60) CONSTRUCT 12\"/>
- 61) CONSTRUCT 12\"/>
- 62) CONSTRUCT 12\"/>
- 63) CONSTRUCT 12\"/>
- 64) CONSTRUCT 12\"/>
- 65) CONSTRUCT 12\"/>
- 66) CONSTRUCT 12\"/>
- 67) CONSTRUCT 12\"/>
- 68) CONSTRUCT 12\"/>
- 69) CONSTRUCT 12\"/>
- 70) CONSTRUCT 12\"/>
- 71) CONSTRUCT 12\"/>
- 72) CONSTRUCT 12\"/>
- 73) CONSTRUCT 12\"/>
- 74) CONSTRUCT 12\"/>
- 75) CONSTRUCT 12\"/>
- 76) CONSTRUCT 12\"/>
- 77) CONSTRUCT 12\"/>
- 78) CONSTRUCT 12\"/>
- 79) CONSTRUCT 12\"/>
- 80) CONSTRUCT 12\"/>
- 81) CONSTRUCT 12\"/>
- 82) CONSTRUCT 12\"/>
- 83) CONSTRUCT 12\"/>
- 84) CONSTRUCT 12\"/>
- 85) CONSTRUCT 12\"/>
- 86) CONSTRUCT 12\"/>
- 87) CONSTRUCT 12\"/>
- 88) CONSTRUCT 12\"/>
- 89) CONSTRUCT 12\"/>
- 90) CONSTRUCT 12\"/>
- 91) CONSTRUCT 12\"/>
- 92) CONSTRUCT 12\"/>
- 93) CONSTRUCT 12\"/>
- 94) CONSTRUCT 12\"/>
- 95) CONSTRUCT 12\"/>
- 96) CONSTRUCT 12\"/>
- 97) CONSTRUCT 12\"/>
- 98) CONSTRUCT 12\"/>
- 99) CONSTRUCT 12\"/>
- 100) CONSTRUCT 12\"/>

SPECIAL NOTE

STORM DRAIN CONNECTIONS TO THE EXISTING 36\"/>

CITY OF RIVERSIDE

STORM DRAIN IMPROVEMENTS FRESH & EAST PARKING LOT EXPANSION

PROJECT NO. 11-0073

DATE: 11/11/2011

SCALE: 1\"/>

PROJECT LOCATION: 4000 EAST RIVERSIDE AVENUE, RIVERSIDE, CA 92501

PROJECT DESCRIPTION: STORM DRAIN IMPROVEMENTS FOR PHASE 1 AND PHASE 2 EXPANSIONS OF THE FRESH & EAST PARKING LOT.

DESIGNED BY: [Name]

CHECKED BY: [Name]

DATE: 11/11/2011

PROJECT NO. 11-0073

DATE: 11/11/2011

SCALE: 1\"/>

PROJECT LOCATION: 4000 EAST RIVERSIDE AVENUE, RIVERSIDE, CA 92501

PROJECT DESCRIPTION: STORM DRAIN IMPROVEMENTS FOR PHASE 1 AND PHASE 2 EXPANSIONS OF THE FRESH & EAST PARKING LOT.

DESIGNED BY: [Name]

CHECKED BY: [Name]

DATE: 11/11/2011

PROJECT NO. 11-0073

DATE: 11/11/2011

SCALE: 1\"/>

PROJECT LOCATION: 4000 EAST RIVERSIDE AVENUE, RIVERSIDE, CA 92501

PROJECT DESCRIPTION: STORM DRAIN IMPROVEMENTS FOR PHASE 1 AND PHASE 2 EXPANSIONS OF THE FRESH & EAST PARKING LOT.

DESIGNED BY: [Name]

CHECKED BY: [Name]

DATE: 11/11/2011

PROJECT NO. 11-0073

DATE: 11/11/2011

SCALE: 1\"/>

PROJECT LOCATION: 4000 EAST RIVERSIDE AVENUE, RIVERSIDE, CA 92501

PROJECT DESCRIPTION: STORM DRAIN IMPROVEMENTS FOR PHASE 1 AND PHASE 2 EXPANSIONS OF THE FRESH & EAST PARKING LOT.

DESIGNED BY: [Name]

CHECKED BY: [Name]

DATE: 11/11/2011

PROJECT NO. 11-0073

DATE: 11/11/2011

SCALE: 1\"/>

PROJECT LOCATION: 4000 EAST RIVERSIDE AVENUE, RIVERSIDE, CA 92501

PROJECT DESCRIPTION: STORM DRAIN IMPROVEMENTS FOR PHASE 1 AND PHASE 2 EXPANSIONS OF THE FRESH & EAST PARKING LOT.

DESIGNED BY: [Name]

CHECKED BY: [Name]

DATE: 11/11/2011

PROJECT NO. 11-0073

DATE: 11/11/2011

SCALE: 1\"/>

PROJECT LOCATION: 4000 EAST RIVERSIDE AVENUE, RIVERSIDE, CA 92501

PROJECT DESCRIPTION: STORM DRAIN IMPROVEMENTS FOR PHASE 1 AND PHASE 2 EXPANSIONS OF THE FRESH & EAST PARKING LOT.

DESIGNED BY: [Name]

CHECKED BY: [Name]

DATE: 11/11/2011

PROJECT NO. 11-0073

DATE: 11/11/2011

SCALE: 1\"/>

PROJECT LOCATION: 4000 EAST RIVERSIDE AVENUE, RIVERSIDE, CA 92501

PROJECT DESCRIPTION: STORM DRAIN IMPROVEMENTS FOR PHASE 1 AND PHASE 2 EXPANSIONS OF THE FRESH & EAST PARKING LOT.

DESIGNED BY: [Name]

CHECKED BY: [Name]

DATE: 11/11/2011

PROJECT NO. 11-0073

DATE: 11/11/2011

SCALE: 1\"/>

E11-0201

CITY OF RIVERSIDE
PUBLIC WORKS DEPARTMENT
RECEIPT

Original Receipt Date:

06/28/2011

PERMIT NUMBER: PW11-0201

INITIALS: HNC
TYPE: Encroachment

Permit

SITE ADDRESS: 1730 EASTRIDGE AV

RECEIPT #: PWR1100317

TOTAL FEES: \$647.90
TOTAL ALL PAYMENTS: \$647.90
BALANCE: \$0.00

TRANS DATE: 06/28/2011 THIS PAYMENT: 647.90

TRANS LIST:

.00 Type	Method	Description	Amount
Payment	Check	7065	647.90
TOTAL:			647.90

ACCT LIST:

Item No.	Description	Account Code	Current Pmts
16102	PW-Encroachment Permit	001014134034035100	589.00
16104	PW-Encroach Surcharge	001012787034031900	58.90
TOTAL:			647.90

W L BUTLER CONSTRUCTION INC

**Trust Account code: 0000720224200

E11-0201