

ENCROACHMENT PERMIT

General Permit

City of Riverside - Public Works Dept.
951-826-5341

Issuance of this permit shall not be construed as a waiver of any other applicable permit or requirement, and is only revocable permission to use the land for the purpose described.

Owner: FOOD LAB, DBA RIVERSIDE FOOD HALL, L.P.
Location: 3605 MARKET ST RIVE
A.P.N.: 213-221-009
Encroachment: ALLOW A MARQUEE SIGN AT A HEIGHT OF 10'-7" ABOVE THE SIDEWALK IN PUBLIC RIGHT OF WAY

The above-described encroachment being shown on Exhibit A attached hereto.

Upon issuance of this permit, I agree to comply with the attached terms and conditions.

Date: 11/16/17

By: [Signature]

Date: _____

By: _____

Applicant
FOOD LAB, DBA RIVERSIDE FOOD HALL, L.P.
191 W. 4TH STREET
POMONA, CA. 91766
909-629-5359
GERALD TESSIER

Contractor/Developer
FUSION SIGN AND DESIGN
680 COLUMBIA AVENUE
RIVERSIDE, 92507
951-682-9660
MEGAN LENZ

ENCROACHMENT PERMIT APPROVAL

This permit has been reviewed and approved by the Departments listed below, provided the attached terms and conditions are adhered to:

P/W ENGINEERING

FINAL APPROVAL

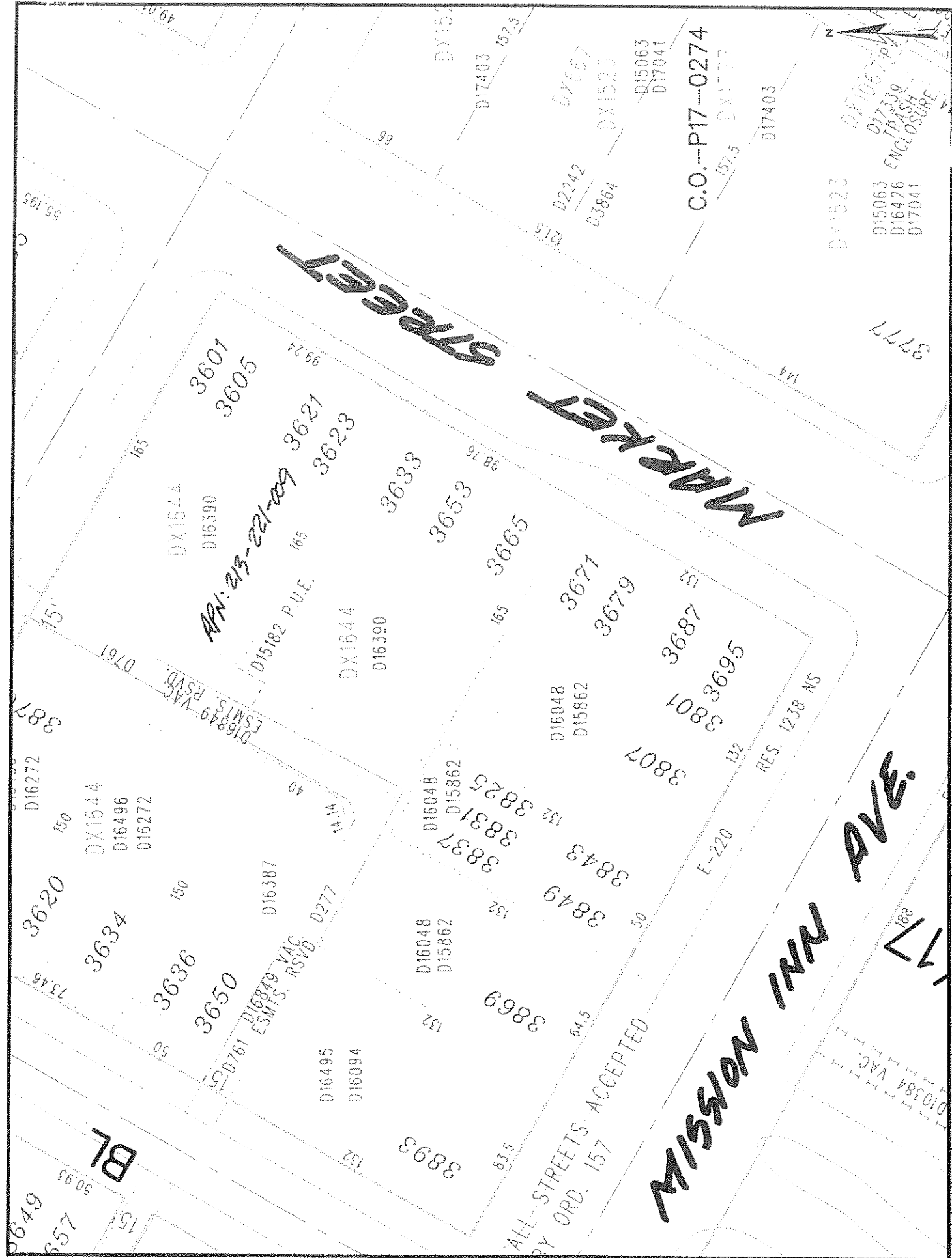
Date: 11/19/17

[Signature]
City Engineer

THIS PERMIT IS NOT VALID UNTIL ISSUED AND POSTED IN CITY RECORDS

Issued By: [Signature]

Dated: 11/16/17



APN: 213-221-009

D15182 P.U.E.

*ALL-STREETS ACCEPTED
BY ORD. 157*

C.O.-P17-0274

MISSION AVENUE

MARKET STREET

BL

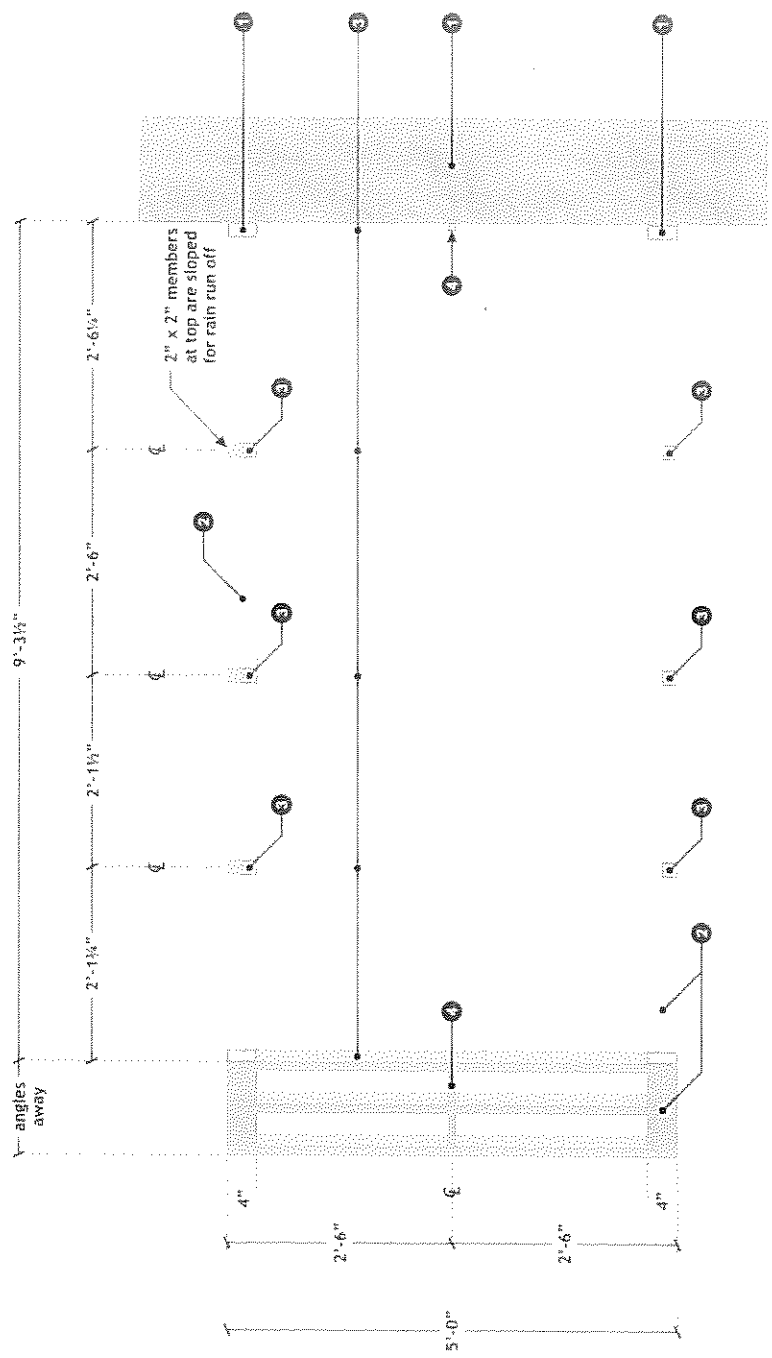
*D15063
D17041
D1523
D17339
D16426
D17041
D15063
D17041
D17067 (PV)
TRASH ENCLOSURE*

Scale 1" = 60' Map Produced on November 14, 2017

E17-0584

The City of Riverside makes no warranty on the accuracy or content of the data shown on this map. This map shall not be reproduced or distributed. © Copyright 2017, City of Riverside, California

Project: FOOD LAB
 Address: 1605 Market Street
 Riverside, CA
 Account Manager: Heath
 Designer: Miguel Reimann
 Scale: As noted
 Design No: 48930
 Feet last digit
 Date: November 1, 2017
 Revisions:



5 MAIN TRUSS - ANGLED FACE AT LED BOARD, ELEVATION

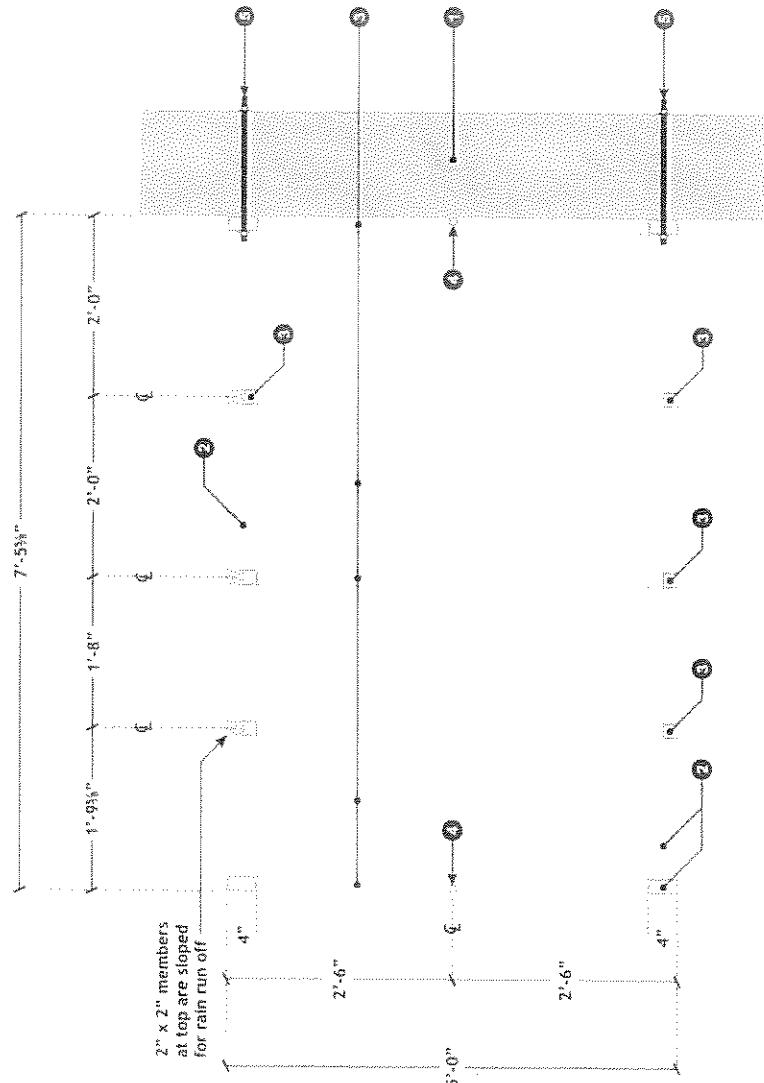
Scale: 3/4" = 1'-0"

1. Existing wall surface.
2. 2" x 4" x 1/4" wall aluminum rectangular tube main truss member welded at all intersections.
3. 2" x 1/4" wall aluminum square tube main truss member welded at all intersections.
4. 1" x .125" wall aluminum square tube brace welded at all intersections
5. 3/4" diameter threaded rod through attachment (10 places).

E17-0884

Project: FOOD LAB
 Address: 3465 Market Street, Riverside, CA
 Account Manager: Heath
 Designer: Miguel Retamal
 Scale: As noted
 Design No: 48339
 Date: November 1, 2017
 Revisions:

Page 10 of 11
 This drawing is the property of Fusion Sign and is not to be reproduced or used in any way without the written consent of Fusion Sign. The design is intended for the specific project and location shown. The client is responsible for obtaining all necessary permits and approvals. Fusion Sign is not responsible for any damage or injury resulting from the use of this drawing.

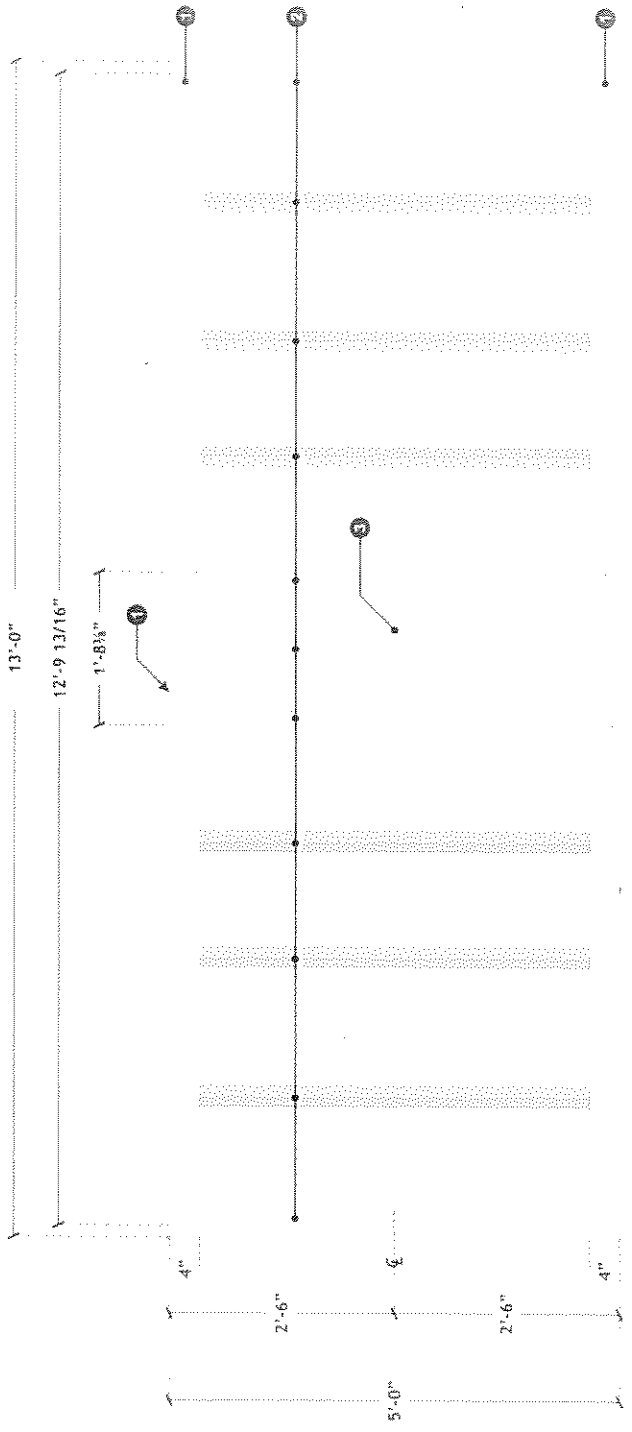


4 MAIN TRUSS - CENTER SECTION PERPENDICULAR TO WALL, ELEVATION

Scale: 3/8" = 1'-0"

1. Existing wall surface.
2. 2" x 4" x 1/8" wall aluminum rectangular tube main truss member welded at all intersections.
3. 2" x 1/4" wall aluminum square tube main truss member welded at all intersections.
4. 1" x .125" wall aluminum square tube brace welded at all intersections
5. 3/8" diameter threaded rod through attachment (10 places).

E17-0884



3 MAIN TRUSS - ELEVATION @ BULLNOSE

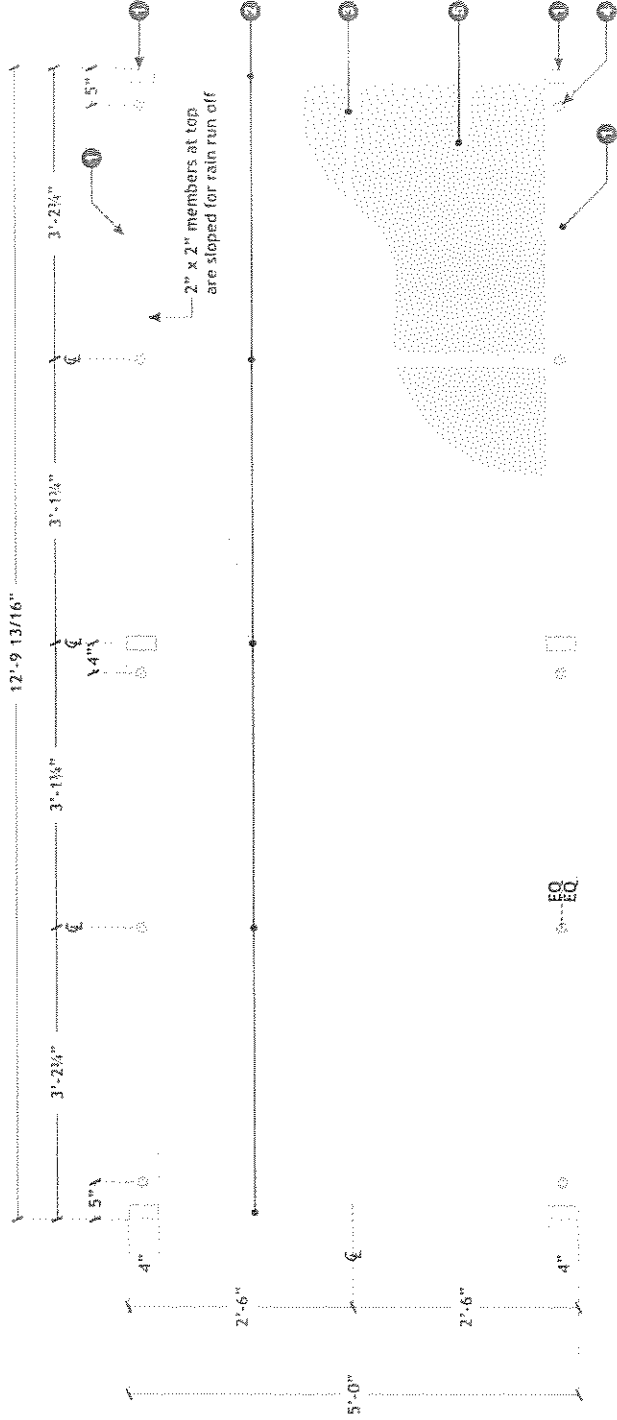
Scale: 3/8" = 1'-0"

1. 2" x 4" x 1/2" wall aluminum rectangular tube main truss member welded at all intersections.
2. 2" x 1/2" wall aluminum square tube main truss member welded at all intersections.
3. 1" x 1.125" wall aluminum square tube brace welded at all intersections

E17-0884

Project: FOOD LAB
 Address: 3665 Washet Street, Riverside, CA
 Account Manager: Heath
 Designer: Majumet Reilman
 Scale: As noted
 Design No: 48336
 Date: November 1, 2017
 Revision:

Page 8 of 11
 The design of this structure is based on the information provided by the client. Fusion Design is not responsible for the accuracy of the information provided. Fusion Design is not responsible for the accuracy of the information provided. Fusion Design is not responsible for the accuracy of the information provided.



2 MAIN TRUSS - ELEVATION @ WALL

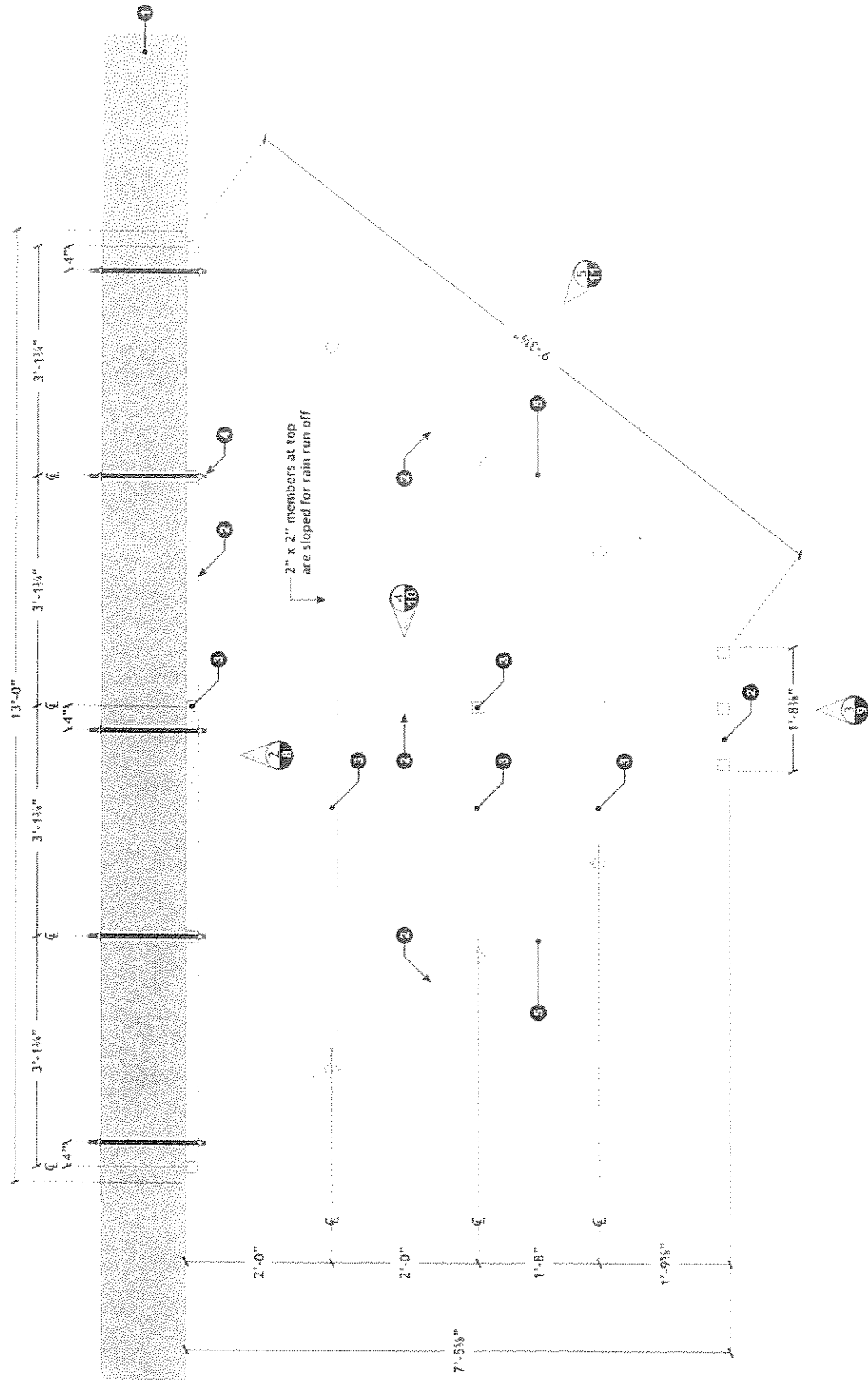
Scale: 1/4" = 1'-0"

1. 2" x 4" x 1/4" wall aluminum rectangular tube main truss member welded at all intersections.
2. 2" x 1/4" wall aluminum square tube main truss member welded at all intersections.
3. 1" x 1.125" wall aluminum square tube brace welded at all intersections
4. 1/4" diameter threaded rod through attachment (10 places).
5. .063 aluminum sheathing on back of truss.

E17-0584

Project: FOOD LAB
 Address: 3055 Market Street
 Riverside, CA
 Account Manager: Heath
 Designer: Miguel Reisman
 Scribe: As noted
 Design No: 49330
 Firm: Fusion Design
 Date: November 1, 2017
 Revises:

THIS DOCUMENT IS THE PROPERTY OF FUSION DESIGN. IT IS TO BE USED ONLY FOR THE PROJECT AND SITE SPECIFICALLY IDENTIFIED HEREIN. IT IS NOT TO BE REPRODUCED, COPIED, OR TRANSMITTED IN ANY FORM OR BY ANY MEANS, ELECTRONIC OR MECHANICAL, INCLUDING PHOTOCOPYING, RECORDING, OR BY ANY INFORMATION STORAGE AND RETRIEVAL SYSTEM, WITHOUT THE WRITTEN PERMISSION OF FUSION DESIGN. THE USER'S OBLIGATION TO PROTECT THIS INFORMATION FROM UNAUTHORIZED DISCLOSURE, REPRODUCTION, OR DISTRIBUTION SHALL BE THE USER'S RESPONSIBILITY. FUSION DESIGN SHALL NOT BE LIABLE FOR ANY DAMAGES, INCLUDING CONSEQUENTIAL DAMAGES, ARISING FROM THE USE OF THIS DOCUMENT. © 2017 FUSION DESIGN. ALL RIGHTS RESERVED.

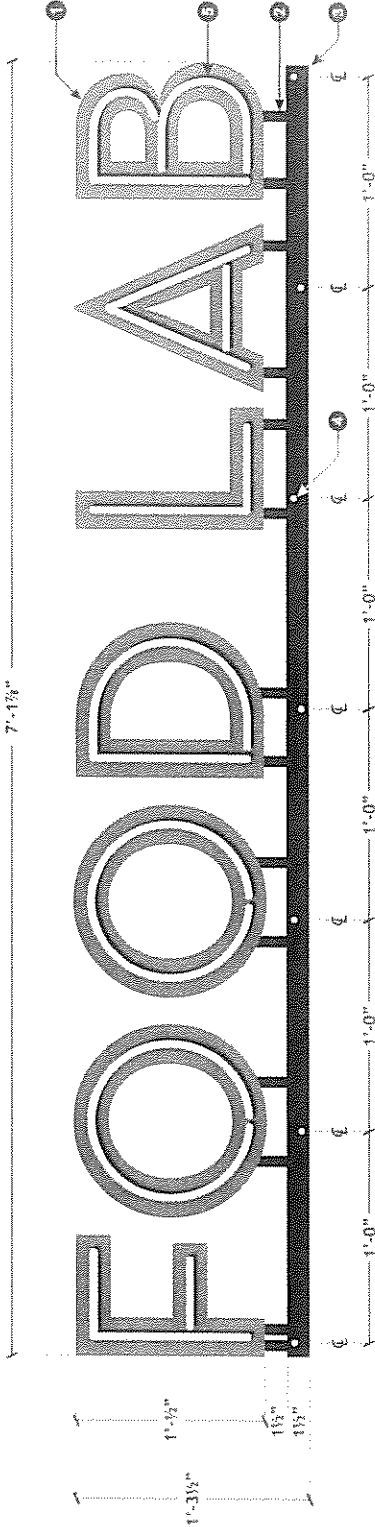


1 MAIN TRUSS - PLAN VIEW

Scale: 1/4" = 1'-0"

1. Existing wall surface.
2. 2" x 4" x 3/4" wall aluminum rectangular tube main truss member welded at all intersections.
3. 2" x 4" x 1/2" wall aluminum square tube main truss member welded at all intersections.
4. 1/2" diameter threaded rod through attachment (10 places).
5. LED board and bulb surround.

E17-0284

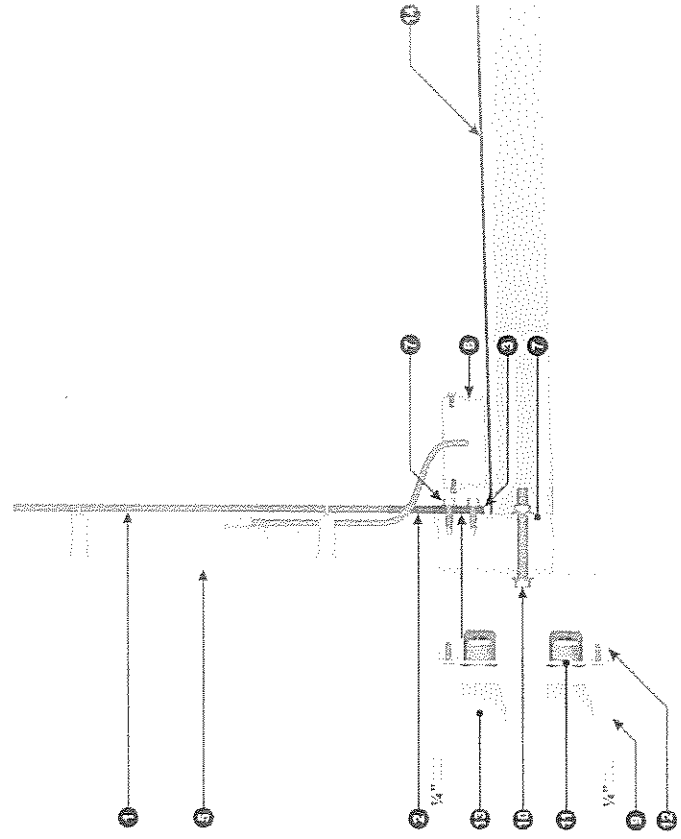


1. FCO PLATE LETTERS WITH NEON OVERLAY - ELEVATION

Two sets required

Scale: 1/2" = 1'-0"

1. 1/2" thick FCO freestanding plate letters painted to match PMS 356C Green.
2. Riser portions of plate to be painted satin Pantone Black C.
3. Attachment bar portion of plate to be painted Pantone Black C.
4. Holes for connection to truss.
5. Exposed 12mm 6500 White neon luminous tubing.
6. Custom raceway for GTO wires fabricated from ripped 2" x 3" aluminum square tube with brake formed aluminum cover.
7. 2" x 4" x 1/4" wall aluminum rectangular tube main truss member.
8. Self-tapping screws on staggered centers.
9. Lightbulb channel fabricated from 6" x .125" aluminum square tube with front face routed off.
10. 3/8" through bolt connection to main truss.
11. .080" aluminum baffle.
12. 3/8" x 1/4" aluminum angle cleat for baffle attachment.
13. SATCO S9174 S14 1.4 watt clear LED lightbulb, Z700K, medium base.
14. .080" aluminum roof sheathing.

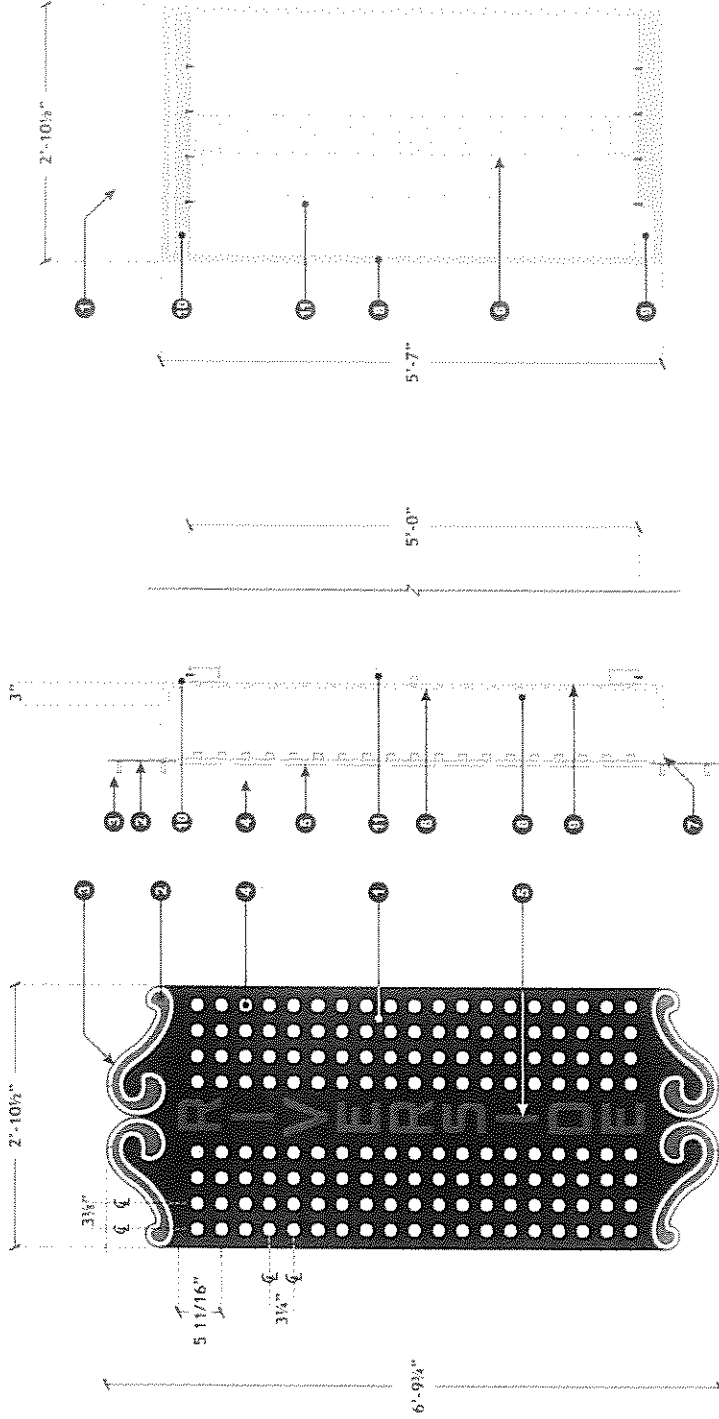


2. SECTION

Scale: 3/8" = 1'-0"

E17-0884

Project: FODD LAB
 Address: 3605 Market Street, Riverside, CA
 Account Manager: Health
 Designer: Miguel Reisman
 Scale: As noted
 Design No: 49330
 First Issue: November 1, 2017
 Date:
 Revisions:



1 ILLUMINATED BULLNOSE PANEL - ELEVATION
 Scale: 3/4" = 1'-0"
 One unit required

2 SECTION
 Scale: 3/4" = 1'-0"

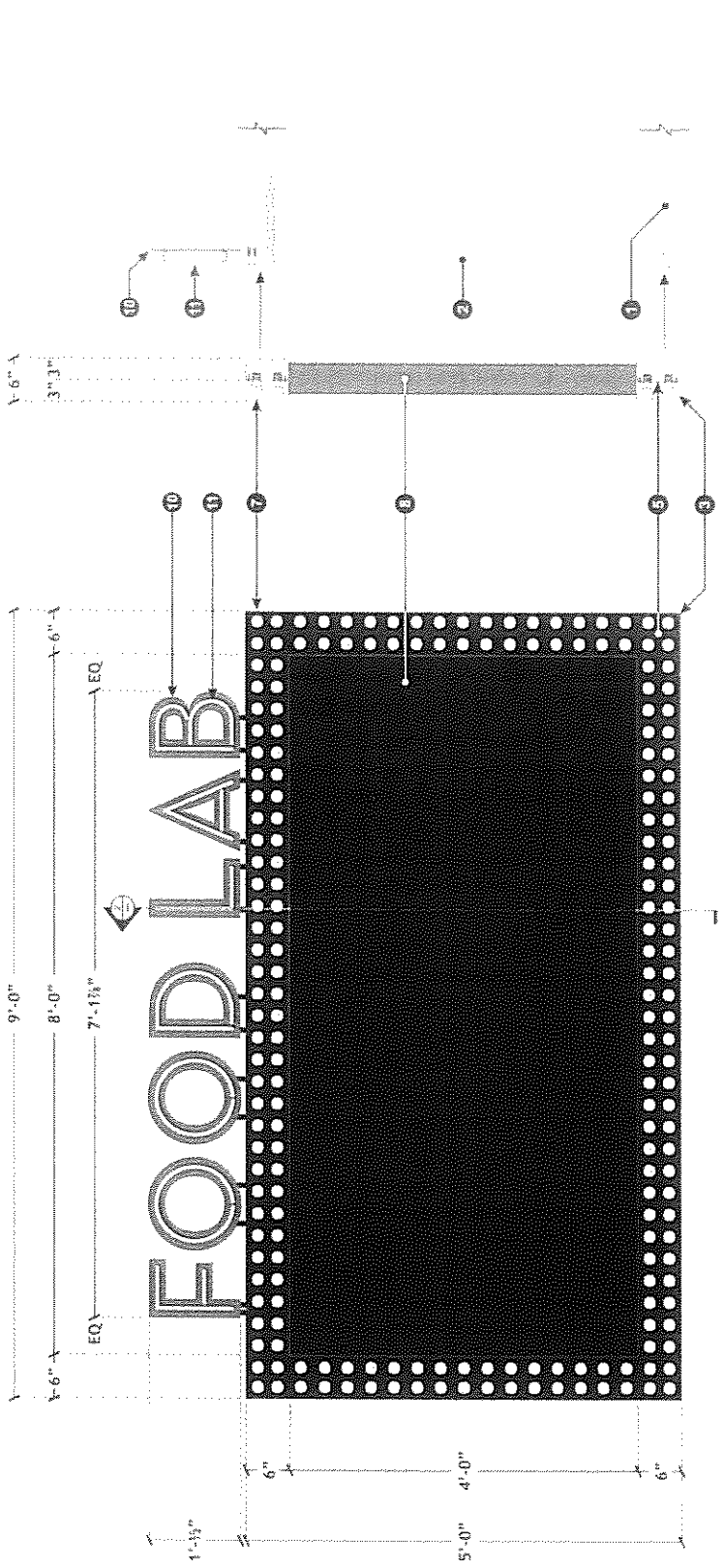
3 BULLNOSE LIGHTBOX - ELEVATION
 Scale: 3/4" = 1'-0"

1. .125" aluminum panel face painted Pantone Black C. Face to be routed for light bulbs and push through copy.
2. 1/4" thick FCO aluminum filigree painted to match PMS 032C Red.
3. Exposed 12mm 6500 White neon luminous tubing.
4. SATCO 59174 S14 1.4 watt clear LED lightbulb, 2700K, medium base.
5. 3/4" thick clear acrylic push through copy with translucent red vinyl overlay.
6. Internal illumination provided by 6500K white LED modules mounted on equal centers for even lighting.
7. Continuous flange fabricated from 1 1/2" x 1 1/2" x 3/16" wall aluminum angle for "shoe box" attachment to light box.
8. Light box frame fabricated from 1" x 3" x .125" wall aluminum rectangular tube welded at all intersections.
9. .080" aluminum light box back.
10. 2" x 2" x 1/4" wall aluminum angle cleat for attachment to truss.
11. Main support truss.

E17-0884

Project: FOOD LAB
 Address: 3625 Alhambra Street
 Riverside, CA
 Account Manager: Health
 Designer: Miguel Reiman
 Scale: As noted
 Design No: 49303
 Date: November 1, 2017
 Revisions:

Page 4 of 11
 Revision 1: 11/1/17
 Revision 2: 11/1/17
 Revision 3: 11/1/17
 Revision 4: 11/1/17
 Revision 5: 11/1/17
 Revision 6: 11/1/17
 Revision 7: 11/1/17
 Revision 8: 11/1/17
 Revision 9: 11/1/17
 Revision 10: 11/1/17
 Revision 11: 11/1/17
 Revision 12: 11/1/17
 Revision 13: 11/1/17
 Revision 14: 11/1/17
 Revision 15: 11/1/17
 Revision 16: 11/1/17
 Revision 17: 11/1/17
 Revision 18: 11/1/17
 Revision 19: 11/1/17
 Revision 20: 11/1/17
 Revision 21: 11/1/17
 Revision 22: 11/1/17
 Revision 23: 11/1/17
 Revision 24: 11/1/17
 Revision 25: 11/1/17
 Revision 26: 11/1/17
 Revision 27: 11/1/17
 Revision 28: 11/1/17
 Revision 29: 11/1/17
 Revision 30: 11/1/17
 Revision 31: 11/1/17
 Revision 32: 11/1/17
 Revision 33: 11/1/17
 Revision 34: 11/1/17
 Revision 35: 11/1/17
 Revision 36: 11/1/17
 Revision 37: 11/1/17
 Revision 38: 11/1/17
 Revision 39: 11/1/17
 Revision 40: 11/1/17
 Revision 41: 11/1/17
 Revision 42: 11/1/17
 Revision 43: 11/1/17
 Revision 44: 11/1/17
 Revision 45: 11/1/17
 Revision 46: 11/1/17
 Revision 47: 11/1/17
 Revision 48: 11/1/17
 Revision 49: 11/1/17
 Revision 50: 11/1/17
 Revision 51: 11/1/17
 Revision 52: 11/1/17
 Revision 53: 11/1/17
 Revision 54: 11/1/17
 Revision 55: 11/1/17
 Revision 56: 11/1/17
 Revision 57: 11/1/17
 Revision 58: 11/1/17
 Revision 59: 11/1/17
 Revision 60: 11/1/17
 Revision 61: 11/1/17
 Revision 62: 11/1/17
 Revision 63: 11/1/17
 Revision 64: 11/1/17
 Revision 65: 11/1/17
 Revision 66: 11/1/17
 Revision 67: 11/1/17
 Revision 68: 11/1/17
 Revision 69: 11/1/17
 Revision 70: 11/1/17
 Revision 71: 11/1/17
 Revision 72: 11/1/17
 Revision 73: 11/1/17
 Revision 74: 11/1/17
 Revision 75: 11/1/17
 Revision 76: 11/1/17
 Revision 77: 11/1/17
 Revision 78: 11/1/17
 Revision 79: 11/1/17
 Revision 80: 11/1/17
 Revision 81: 11/1/17
 Revision 82: 11/1/17
 Revision 83: 11/1/17
 Revision 84: 11/1/17
 Revision 85: 11/1/17
 Revision 86: 11/1/17
 Revision 87: 11/1/17
 Revision 88: 11/1/17
 Revision 89: 11/1/17
 Revision 90: 11/1/17
 Revision 91: 11/1/17
 Revision 92: 11/1/17
 Revision 93: 11/1/17
 Revision 94: 11/1/17
 Revision 95: 11/1/17
 Revision 96: 11/1/17
 Revision 97: 11/1/17
 Revision 98: 11/1/17
 Revision 99: 11/1/17
 Revision 100: 11/1/17



1 READER BOARD WITH LED BULB SURROUND - ELEVATION

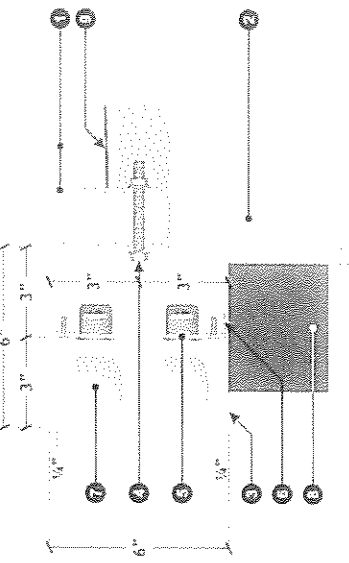
Scale: 1/4" = 1'-0"

Two units required

1. 2" x 4" x 1/4" wall aluminum rectangular tube main truss member.
2. 2" x 1/2" wall aluminum square tube main truss member.
3. Lightbulb channel fabricated from 6" x .125" aluminum square tube with front face routed off.
4. 1/2" through bolt connection to main truss.
5. .080" aluminum baffle.
6. 1/2" x 1/4" aluminum angle cleat for baffle attachment.
7. SATCO S9174 S14 1.4 watt clear LED lightbulb, 2700K, medium base.
8. Cirrus LED RGB high resolution 15mm digital display board.
9. .080" aluminum roof sheathing.
10. 1/2" thick FCO freestanding plate letters painted to match PMS 356C Green.
11. Exposed 12mm 6500 White neon luminous tubing.

2 SECTION

Scale: 1/4" = 1'-0"



3 SECTION

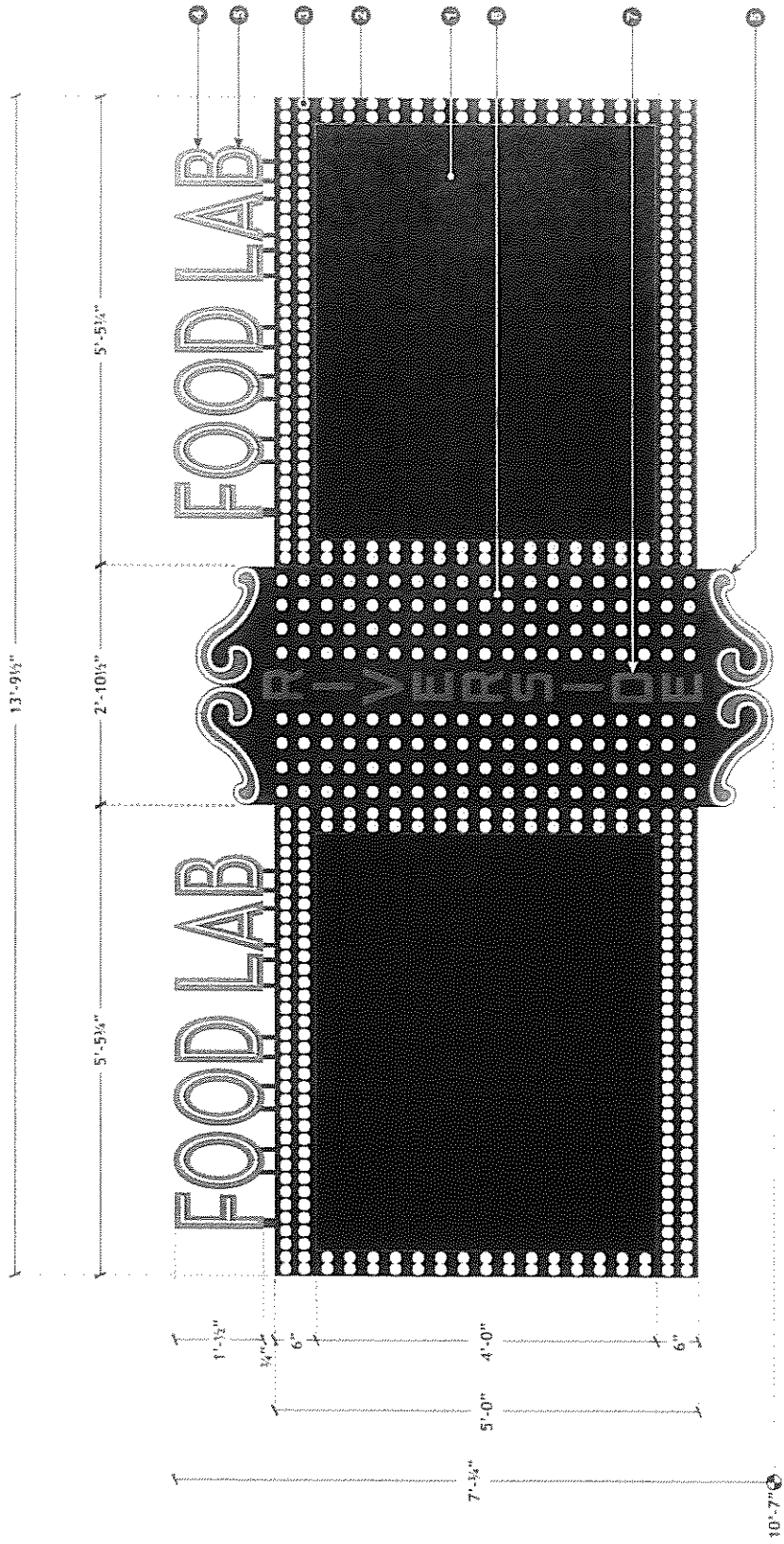
Scale: 3" = 1'-0"



E17-0884

Project: FOOD LAB
 Address: 3603 Barrett Street, Riverside, CA
 Account Manager: Heath
 Designer: Miguel Reiman
 Scale: As noted
 Design No: 483370
 Date: November 1, 2017

Page: 3 of 11
 Revision: 0001
 Date: 11/01/17
 Author: Miguel Reiman
 Checker: Heath
 Date: 11/01/17
 Project: FOOD LAB
 Design No: 483370
 Date: November 1, 2017



1 D/F MARQUEE WITH READER BOARDS - FRONT ELEVATION

One unit required

1. Cirrus LED RGB high resolution 15mm digital display board.
2. 3" deep open faced aluminum channel painted satin black.
3. LED light bulbs SATCO 59174
4. 3/8" thick FCO freestanding letters painted to match PMS 000C Green
5. Exposed 12mm 6500 White neon luminous tubing.
6. Face plate for bulbnose to be all aluminum construction, painted satin black.
7. 1/4" thick clear acrylic push through copy with translucent red vinyl overlay.

Scale: 3/4" = 1'-0"

E17-0884