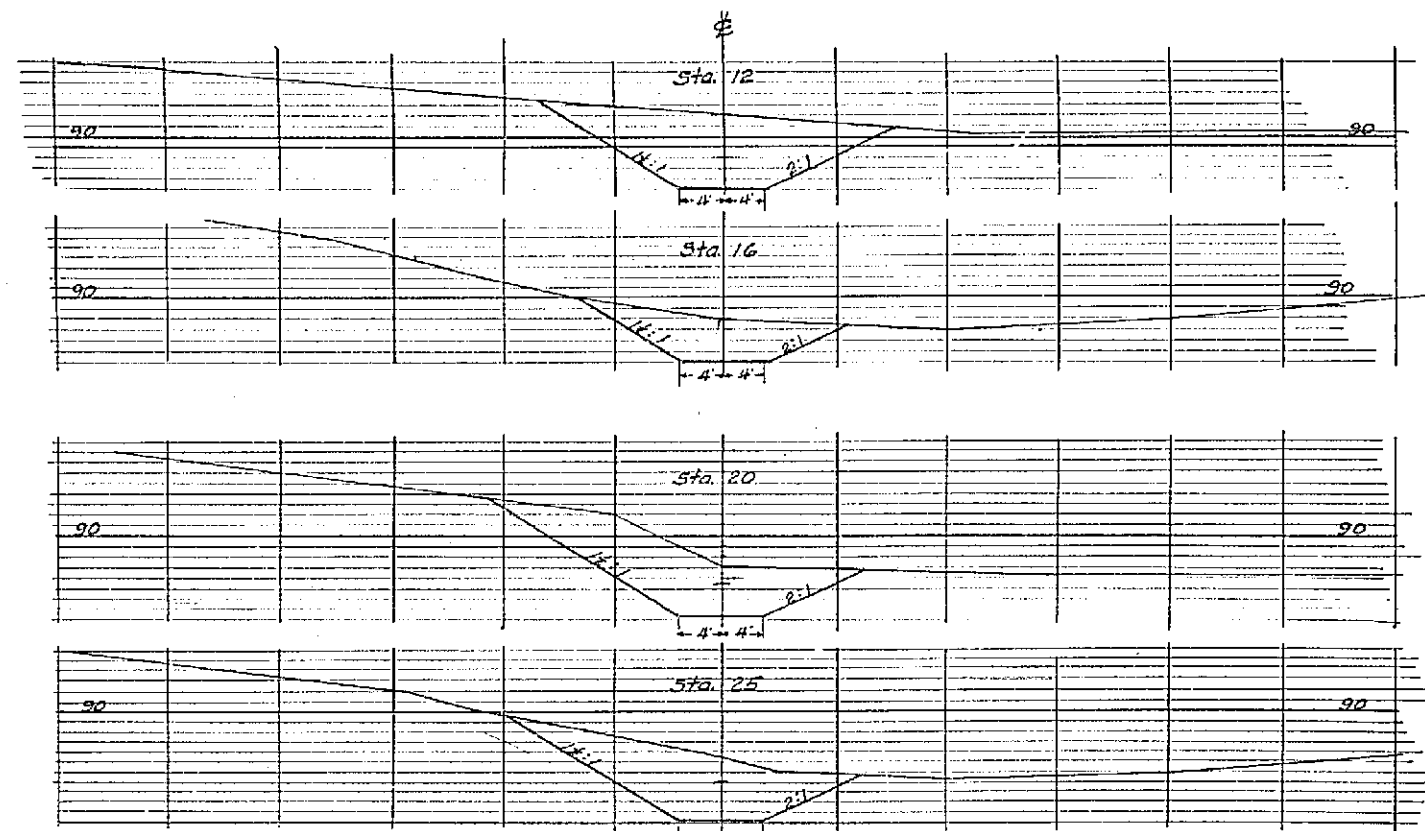


TOPOGRAPHY AND PROFILE OF STORM WATER DITCH IN HOLE ESTATE

ENGINEERING DEPT.

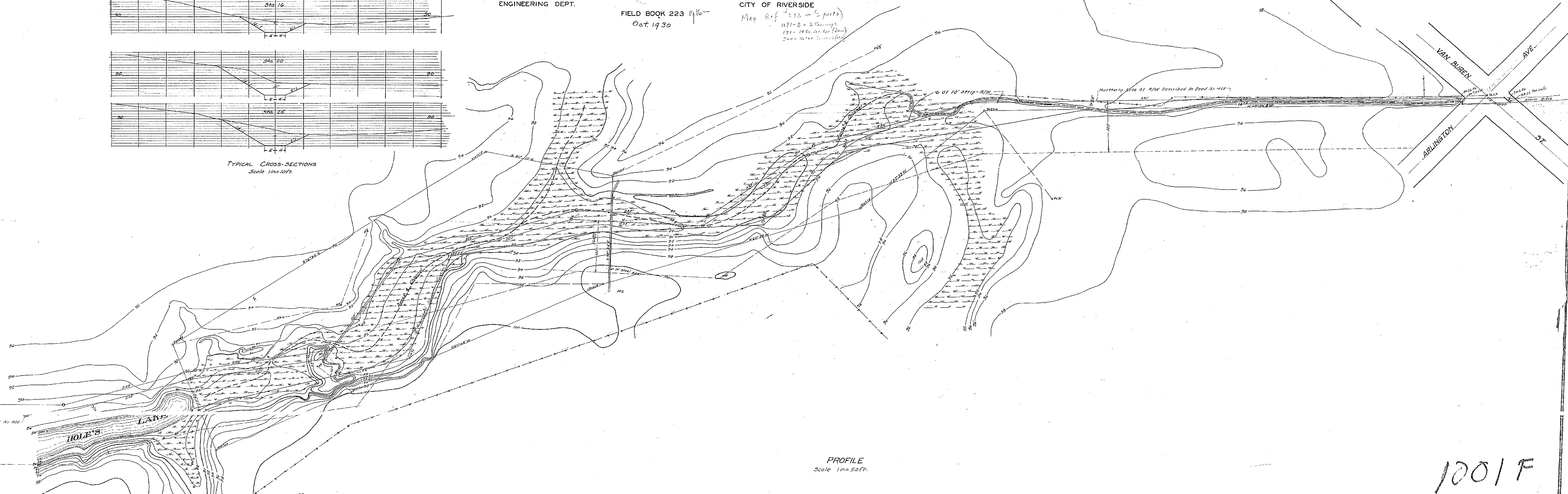
FIELD BOOK 223 p. 16
Oct. 1930

CITY OF RIVERSIDE
Map Ref. 513 - 2 parts
1911 - B - 2 Tracings
1911 - 148 - 2nd Edition
Storm Water Ditch

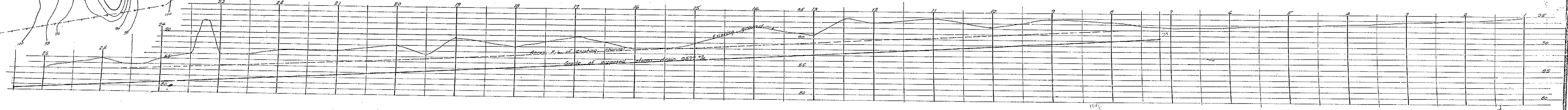


TYPICAL CROSS-SECTIONS
Scale 1 in = 10 ft.

Scale 1 in = 20 ft.



PROFILE
Scale 1 in = 50 ft.



1001 F