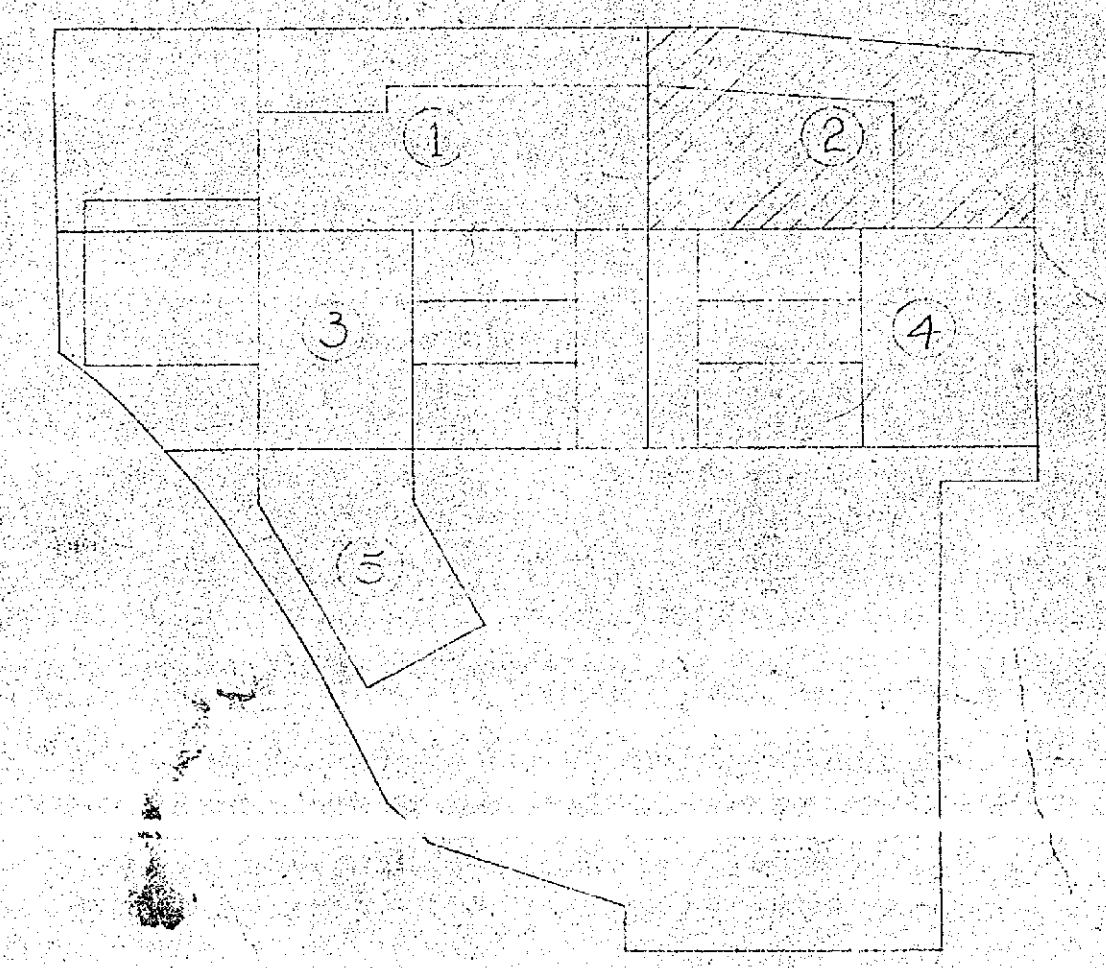
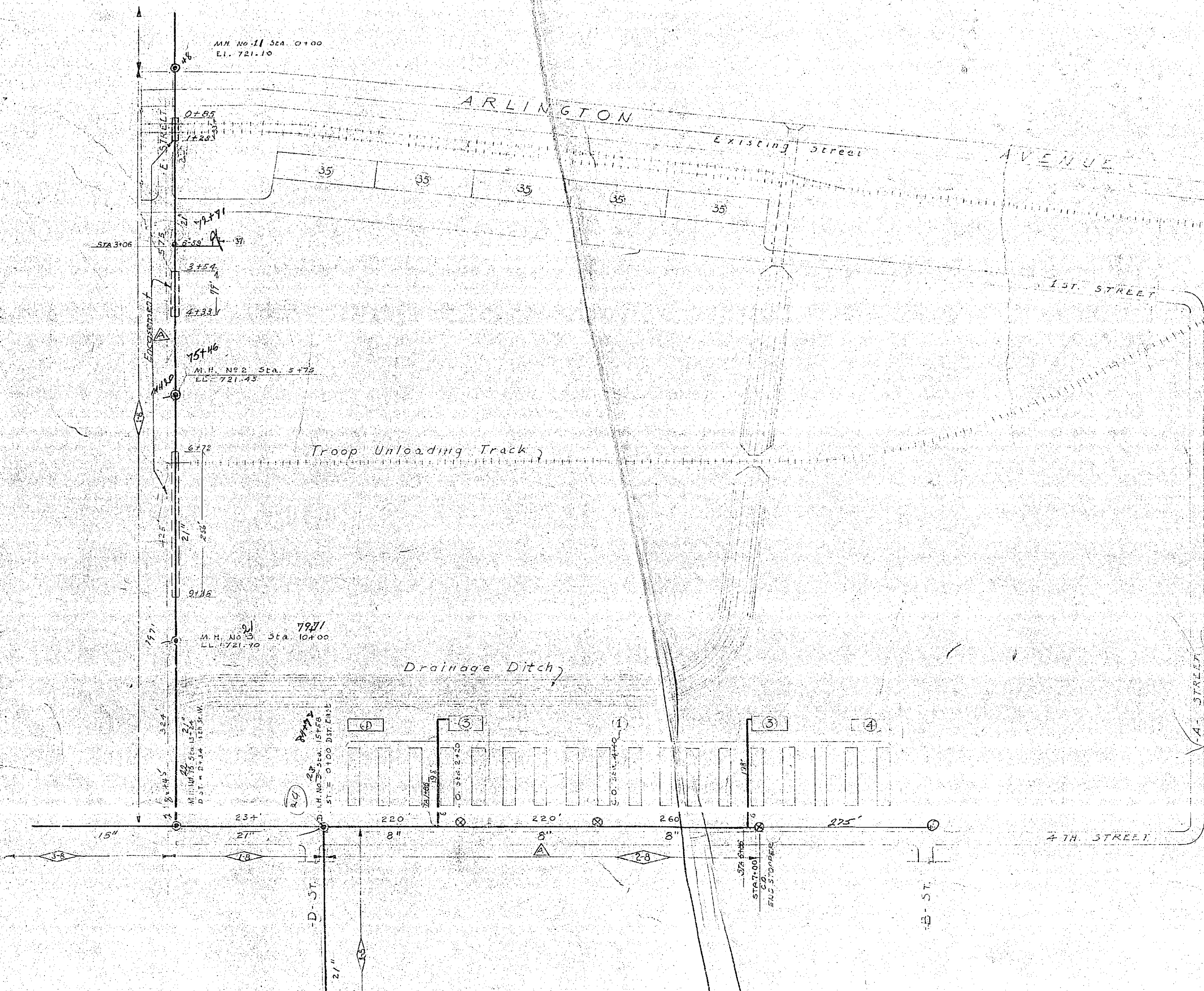


100' STATIONING
SEE PLAN
"H.F.O."
MANOR Storm Drain

18016



10016

REV. NO.	DATE	REVISION	REV.	CHK.	APP.
1	10/24/16	Change Size of Pipe on 4th St Add Encasement on Linc St	G.M.	G.H.M.	G.H.M.

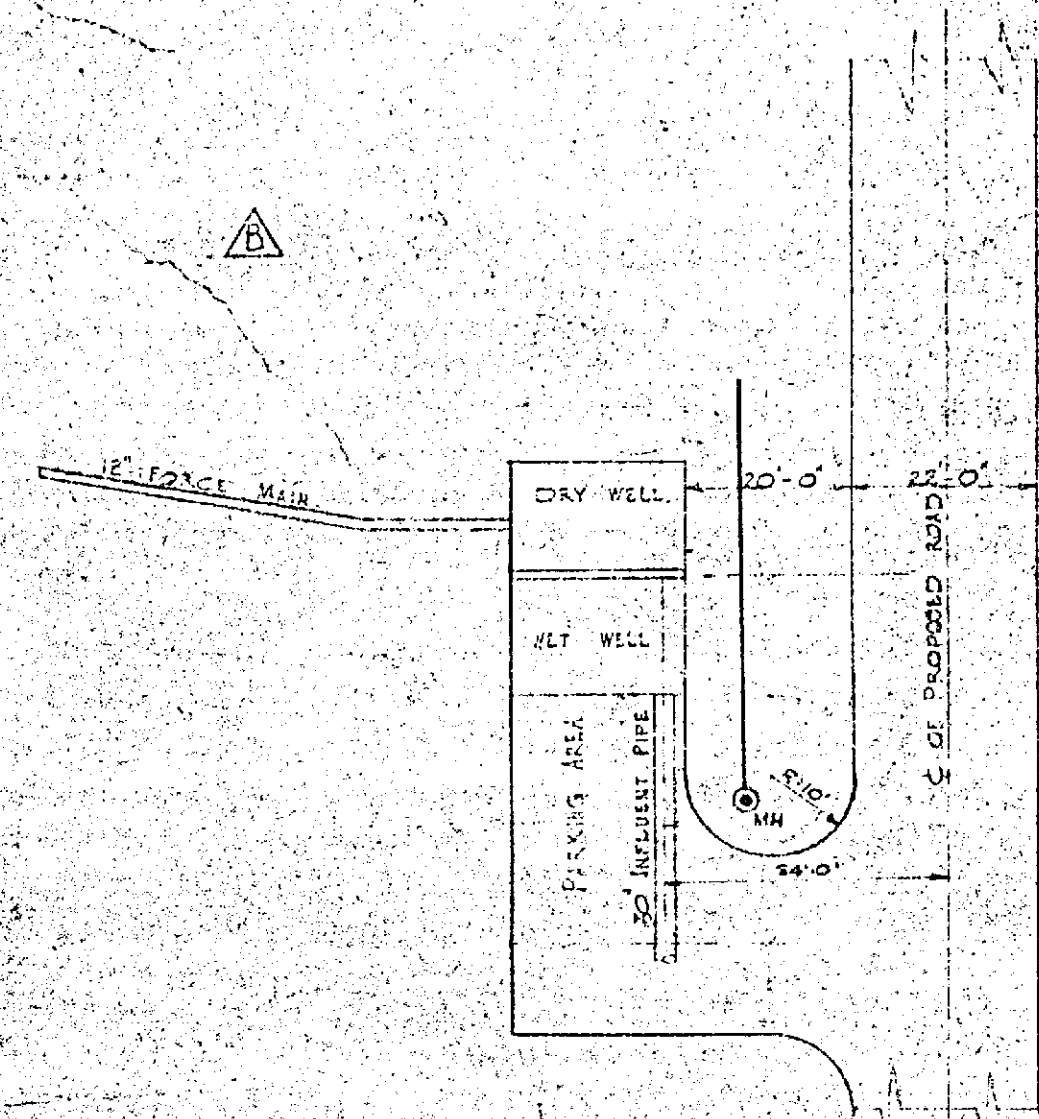
MILITARY CONSTRUCTION
ARLINGTON STAGING AREA
 ARLINGTON, CALIF.
 SEWAGE COLLECTION SYSTEM
 No. 2

SCALE: 1 IN. = 100 FT. IN 17 SHEETS SHEET NO. 4
 GRAPHIC SCALE FEET
 U. S. ENGINEER OFFICE, LOS ANGELES, CALIF., JUNE 1916

SUBMITTED BY: *G. M. Thompson*
 CHIEF ENGINEER

APPROVED BY: *Edwin C. Millon*
 DISTRICT ENGINEER

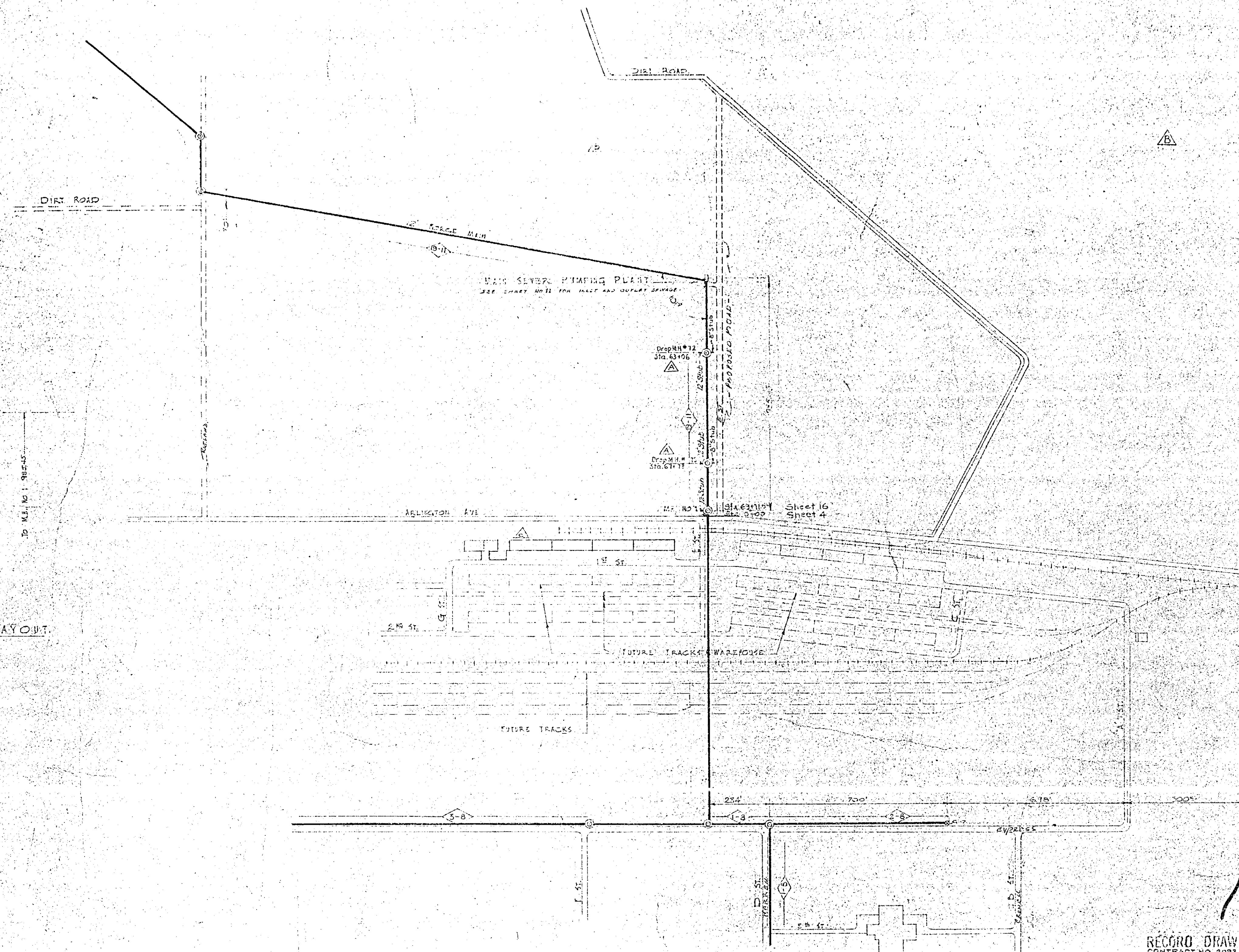
FILE NO. 583/23 DRAWN BY: [initials] TRACED BY: [initials] CHECKED BY: [initials] TO ACCOMPANY [initials] DATED: 25/17



DETAIL OF MAIN PUMP PLANT LAYOUT.
SCALE 1" = 20'

GENERAL NOTES.

Force main comes out of pump house parallel to Arlington Ave. If angle will be distributed in the first four joints of pipe.



10016

RECORD DRAWING - AS CONSTRUCTED
CONTRACT NO. 3093
POSTED BY: M. S. DATE: 6-30-42
POSTED BY: DATE:
POSTED BY: DATE:

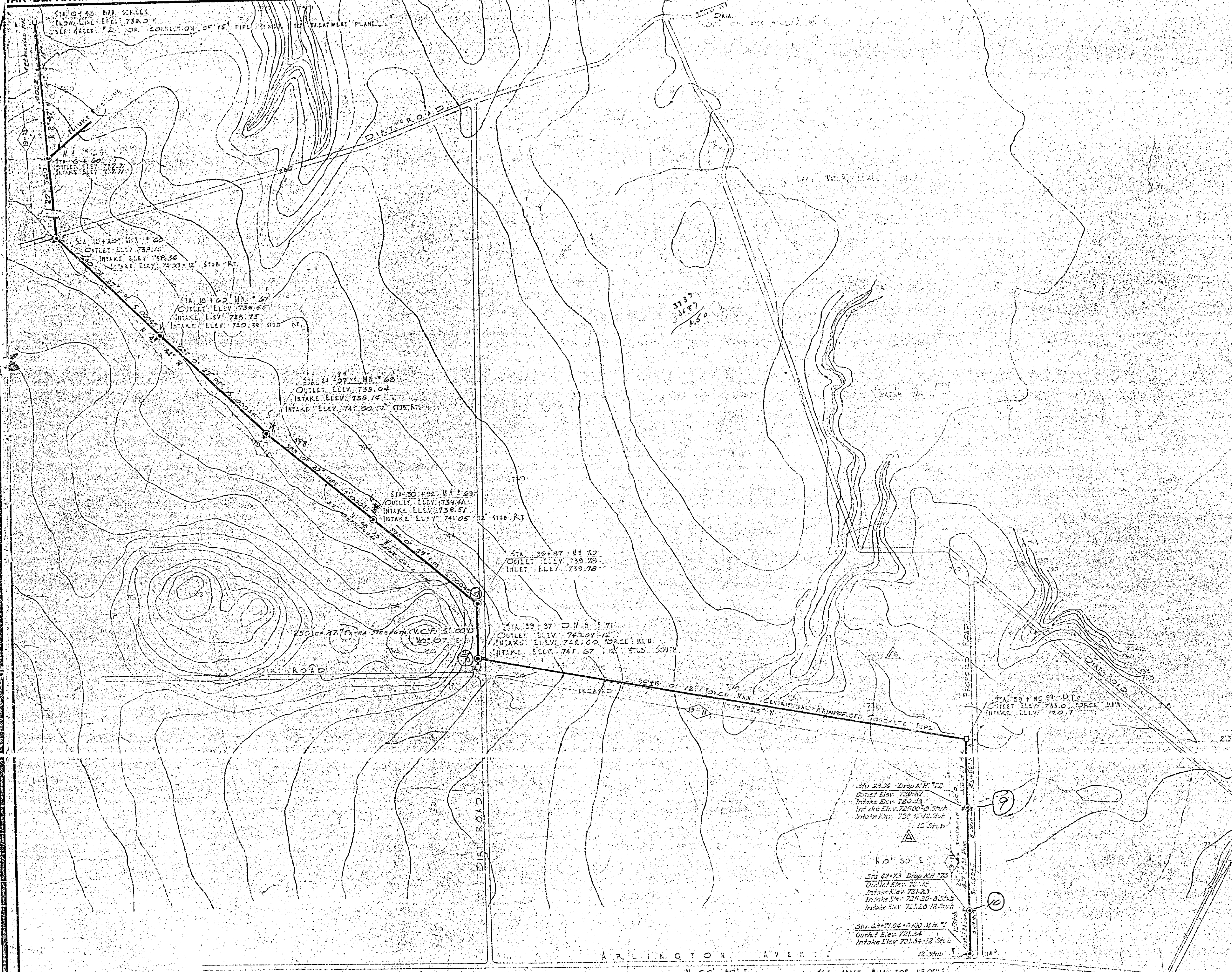
REV. NO.	DATE	REVISION	REV.	CHK.	APP.
1	8-10-47	Drop 111' 7 1/2' & 4 1/2' added	R.A.F.	A.L.S.	J.L.S.
2	9-11-47	Revised emergency overflow pit and 21' overflow pipe	S.Z.	J.L.S.	J.L.S.
3	11-28-47	Drop 1' Wards service 130' in 131' 1/2'	L.T.	J.E.H.	J.L.S.
4	8-30-48	Revised dimensions on constructed	J.L.S.	J.L.S.	J.L.S.

MILITARY CONSTRUCTION
ARLINGTON STAGING AREA
ARLINGTON CALIF.
SEWAGE COLLECTION SYSTEM
MAIN SEWER PUMPING PLANT
LOCATION PLAN

SCALE: 1" = 200' or AS SHOWN IN L7 SHEETS SHEET NO. 12
GRAPHIC SCALE
U.S. ENGINEER OFFICE, LOS ANGELES, CALIF. JUNE 1942
SUBMITTED BY: H.W. Thompson
APPROVED BY: Edward C. Nelson
FILE NO. 583/31 DRAWN A.E.V. CHECKED G.H.M. TO ACCOMPANY 33
REV. P. DATE:

FRICK, PHILIPS, FITZGERALD & FLEWELLING
ENGINEERS AND ARCHITECTS
210 W. 5th St. L.A.

WAR DEPARTMENT



GENERAL NOTES
 SEE SHEET P. 1 FOR SCHEDULE
 MATERIAL SCHEDULE
 STATION TO STATION PIPE LENGTH
 0+45 TO 0+20 15' 15" STANDARD STRENGTH V.C.P.
 0+20 TO 39+37 17' 32" STANDARD STRENGTH V.C.P.
 39+37 TO 57+42 18' 05" STANDARD STRENGTH REINFORCED CONCRETE PRESSURE PIPE
 57+42 TO 59+25 13' 50" 168 EXTER. STRENGTH V.C.P.
 59+25 TO 73+49 14' 24" 168 EXTER. STRENGTH V.C.P.

RECORD DRAWING - AS CONSTRUCTED
 Contract 3093
 POSTED BY: No. Change
 DATE: 6-22-43 (Rev. A)
 POSTED BY:
 DATE:

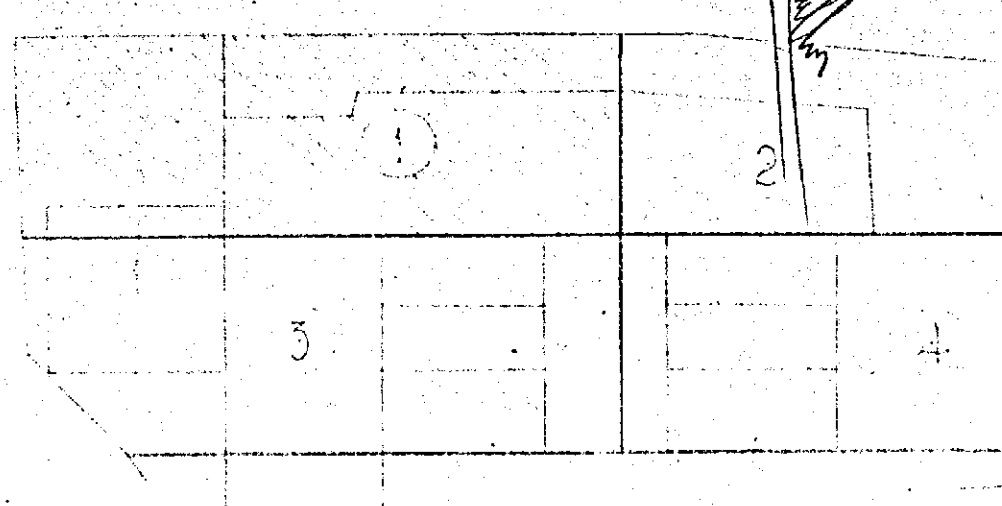
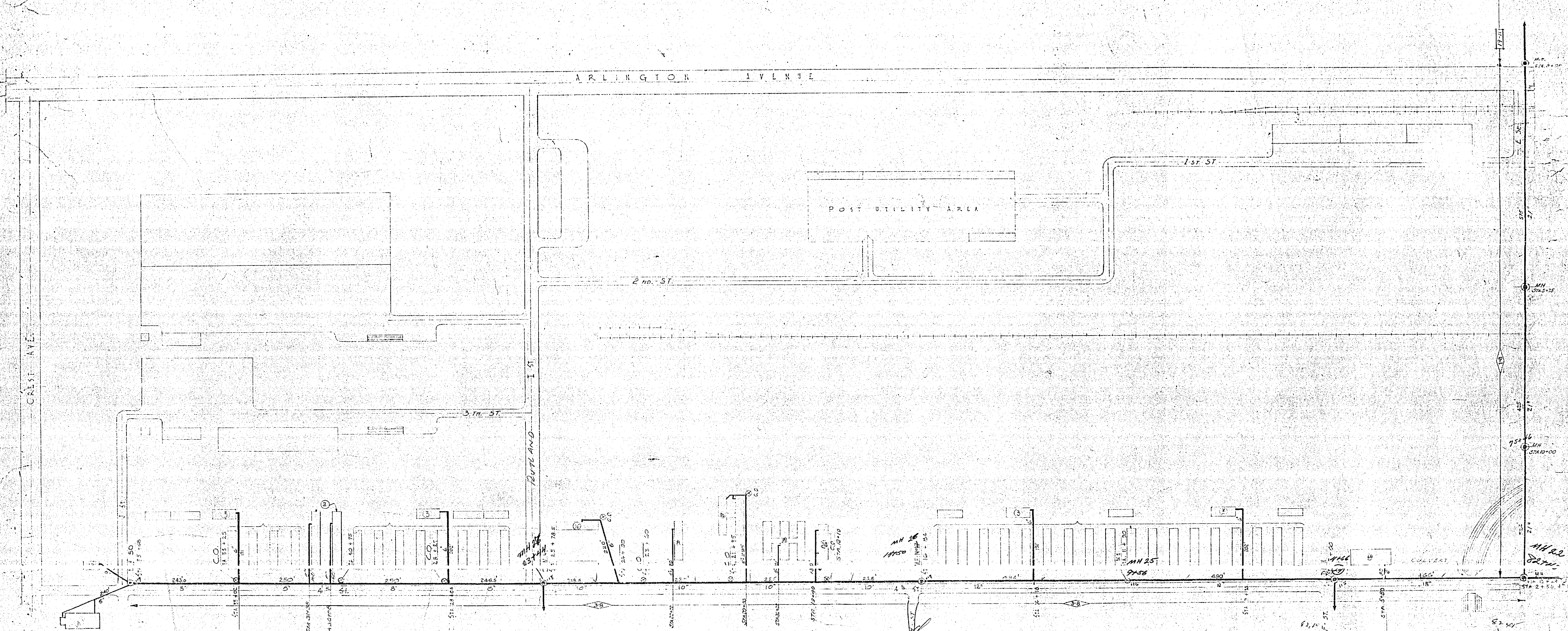
10016

REV. NO.	DATE	REVISION	REV.	CHK.	APP.
1	8-12-42	Remove emergency overflow pit and 24" overflow pipe. Change manholes on 24" pipe No. of Arlington Ave. to agree with Dwg. File No. 583/35 Revision A			

MILITARY CONSTRUCTION
 ARLINGTON STAGING AREA
 ARLINGTON CALIF.
 SEWAGE COLLECTION SYSTEM
 PLAN OUTFALL SEWER AND FORCE MAIN
 ARLINGTON AVE TO TREATMENT PLANT
 SCALE: 1" = 40' IN 17 SHEETS SHEET NO. 16
 GRAPHIC SCALE
 U. S. ENGINEER OFFICE, LOS ANGELES, CALIF. JUNE 1942
 SUBMITTED BY: [Signature]
 APPROVED: [Signature]
 FILE NO. 583/35 DRAWN ADV. TRACED J.T.M. CHECKED G.H.M. TO ACCOMPANY 37
 REV. A DATED: []

ERICK, PHILLIPS, FITZGERALD & FLEWELLING
 415 W. 5th St. L.A.

ARLINGTON AVENUE



REV. NO.	DATE	REVISION	REV.	CHK.	APP.

MILITARY CONSTRUCTION
ARLINGTON STAGING AREA
 NEW WASTE COLLECTION SYSTEM

SCALE: 1 IN. = 100 FT. IN 17 SHEETS SHEET NO. 3
 GRAPHIC SCALE FEET
 U. S. ENGINEER OFFICE, LOS ANGELES, CALIF., JUNE 1942

SUBMITTED BY: *A. M. Thompson*
 DISTRICT ENGINEER

APPROVED BY: *Edwin C. Hedges*
 DISTRICT ENGINEER

FILE NO. 583/22
 DRAWN: [initials]
 TRACED: [initials]
 CHECKED: [initials]
 TO ACCOMPANY SPECIFICATION NO. 24
 DATED: JULY 20 1942

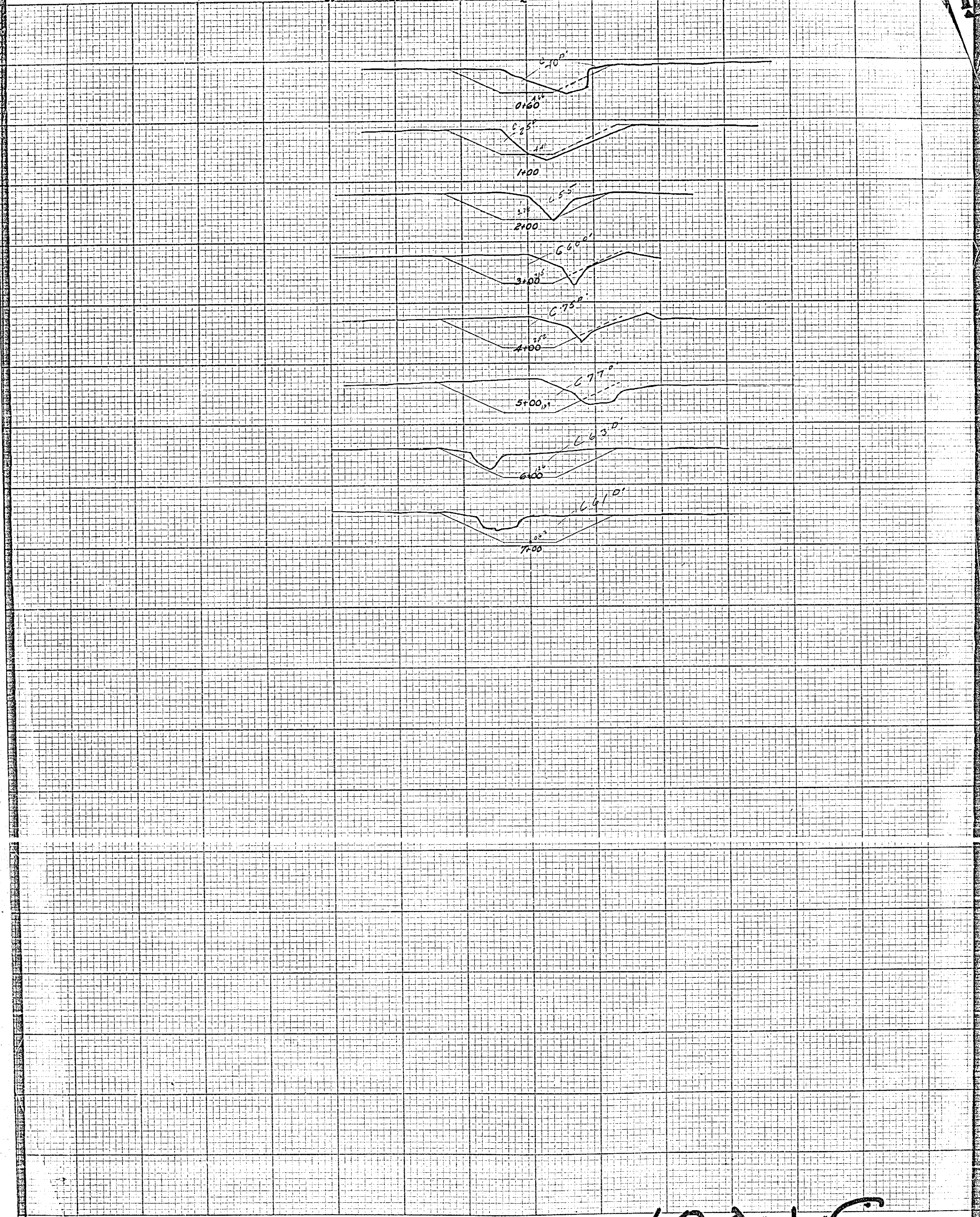
324
 421
 749
 699
 30

10016

KEY MAP
 BRICK PAVING, CONCRETE DRIVEWAYS

Cross-Sections Monroe St Storm Drain
Wly. from N. Van Buren St. thru Hole Property.

South Side 30 20 10 0 10 20 30 North Side
Dk. 223 P. 23 2-28-31



MADE IN GERMANY

1001
DILLI PO. H. S. MARCH-POST CO.
CHICAGO, ILL.