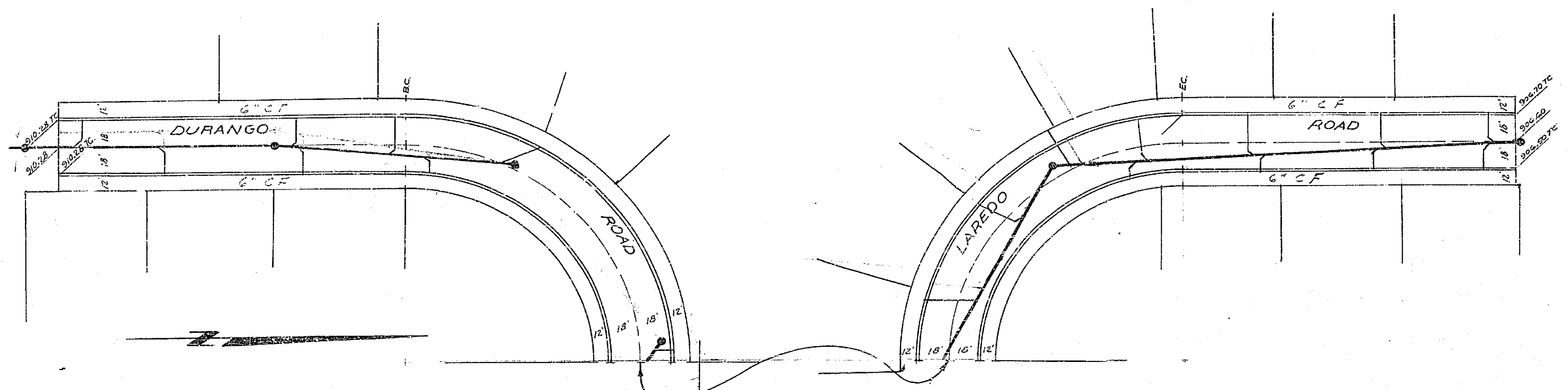
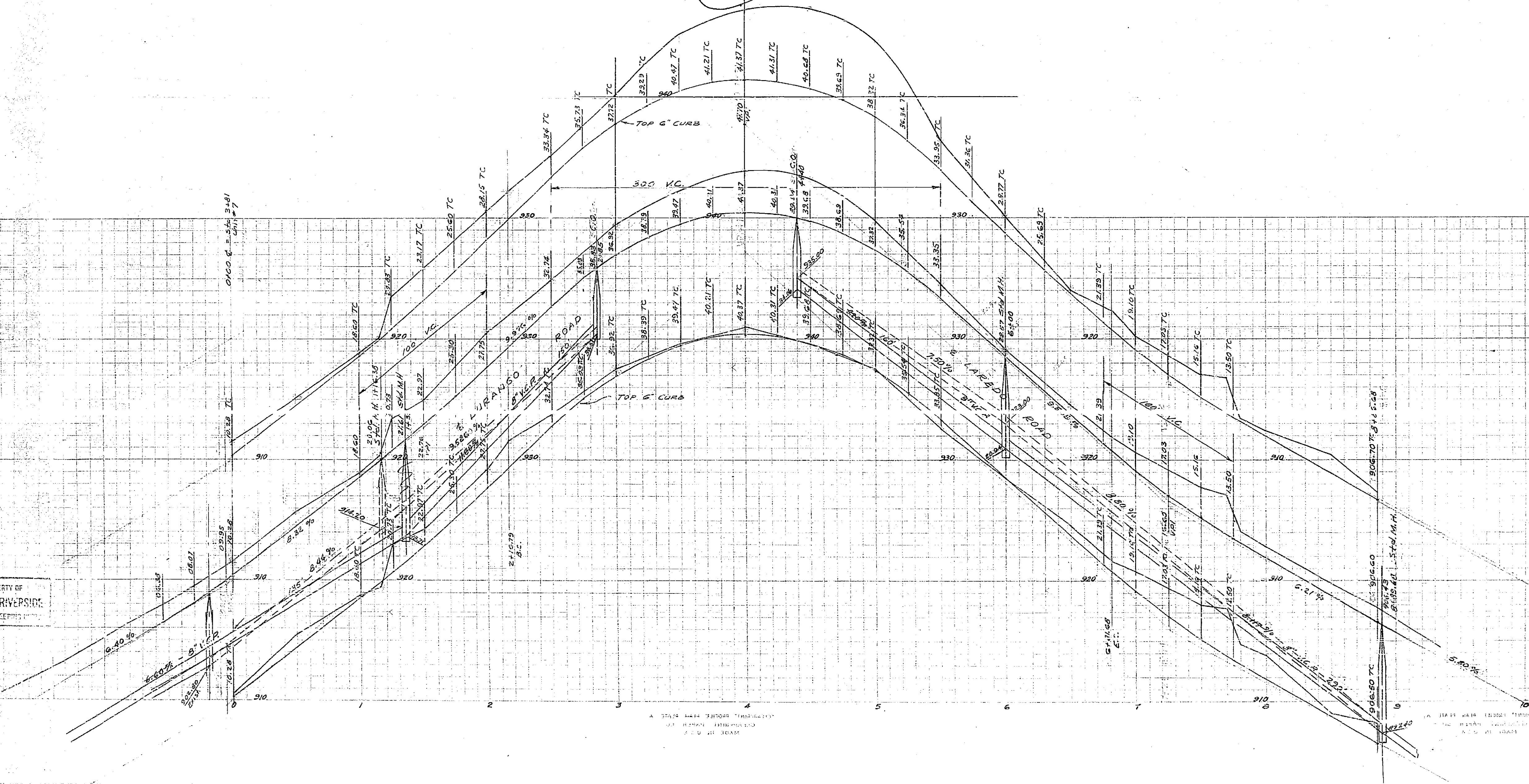


CITY OF RIVERSIDE  
CITY ENGINEERING DEPT.

PROPERTY OF  
CITY OF RIVERSIDE  
CITY ENGINEERING DEPT.



SHEET 1 OF 5 SHEETS



Approved *M.H. Dawkins*  
CITY ENGINEER.

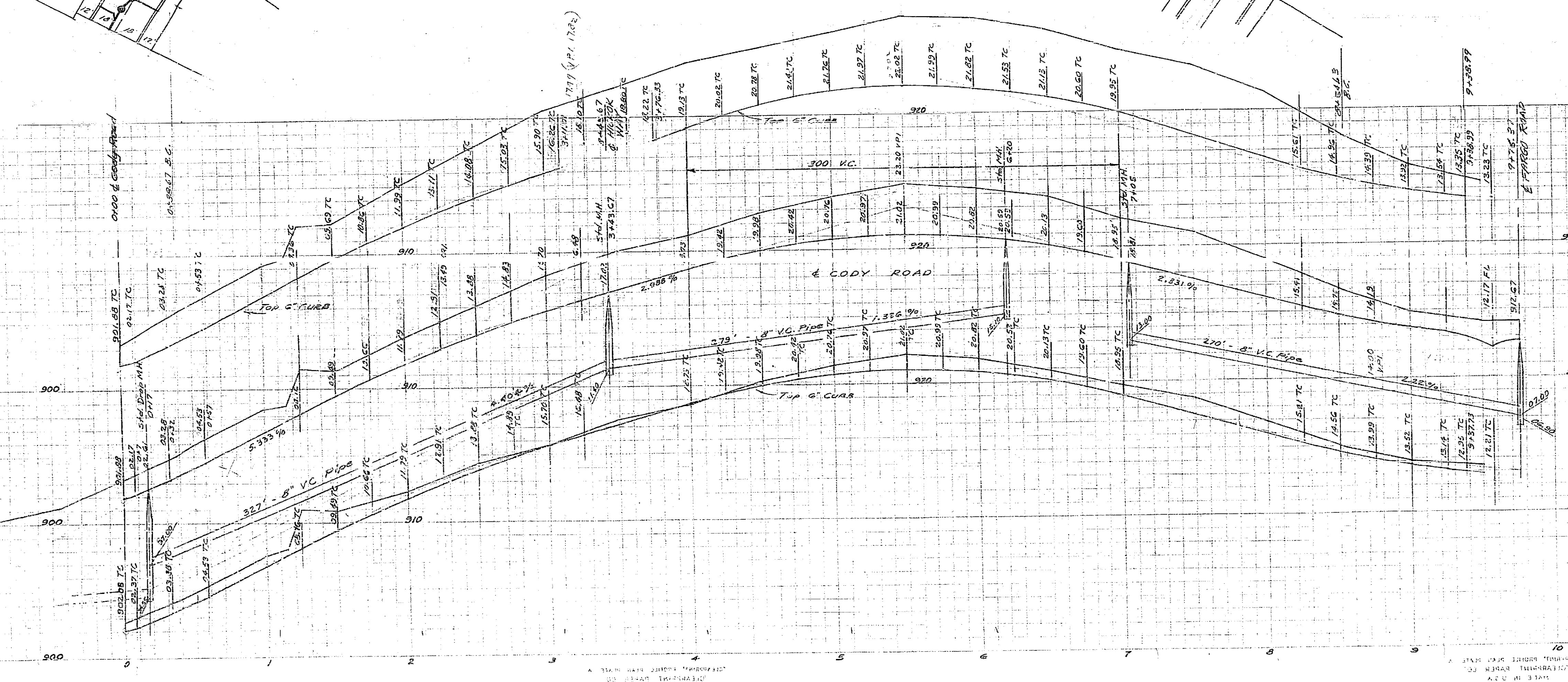
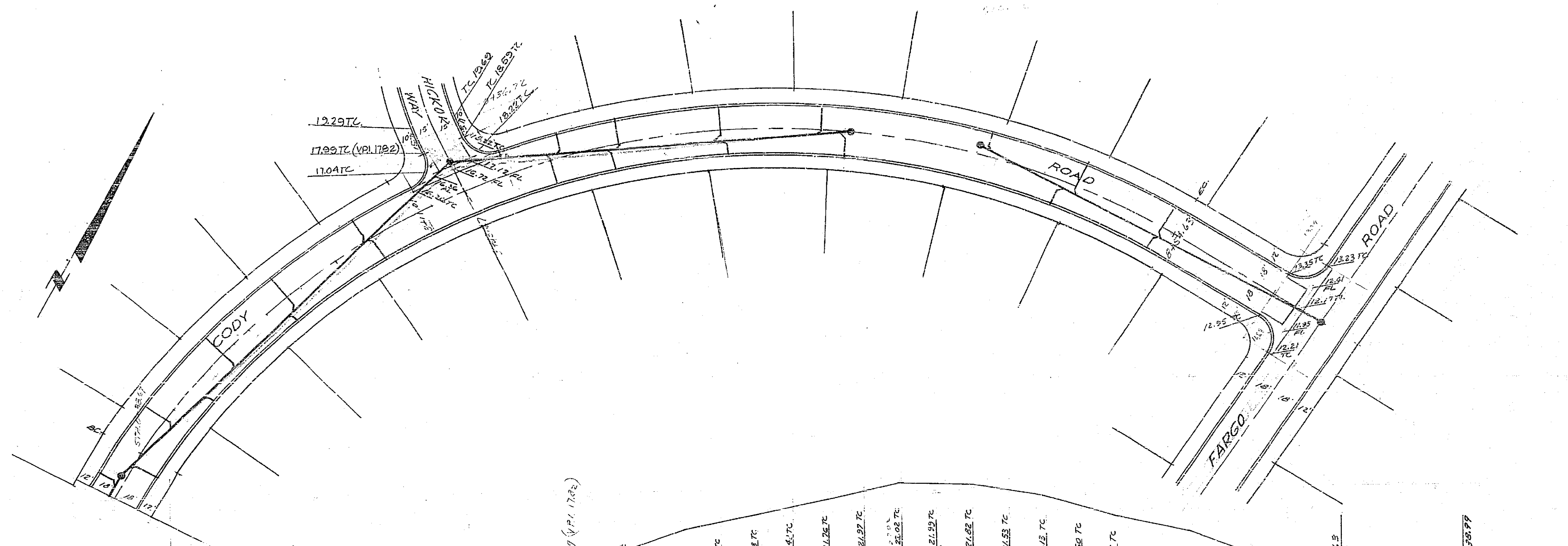
Approved as revised - dash lines -  
*M.H. Dawkins*  
City Engineer

PLAN & PROFILE  
SUN GOLD TERRACE - UNIT NO. 3  
DURANGO ROAD - LAREDO ROAD  
JULY 1953 J.F. DAVIDSON C.E.  
SCALE  
Horizontal 1"=40'  
Vertical 1"=4'

PROPERTY OF  
CITY OF RIVERSIDE  
CITY ENGINEERING DEPT.

1006

PROPERTY OF  
CITY OF RIVERSIDE  
CITY ENGINEERING DEPT.



SHEET 2 OF 5 SHEETS

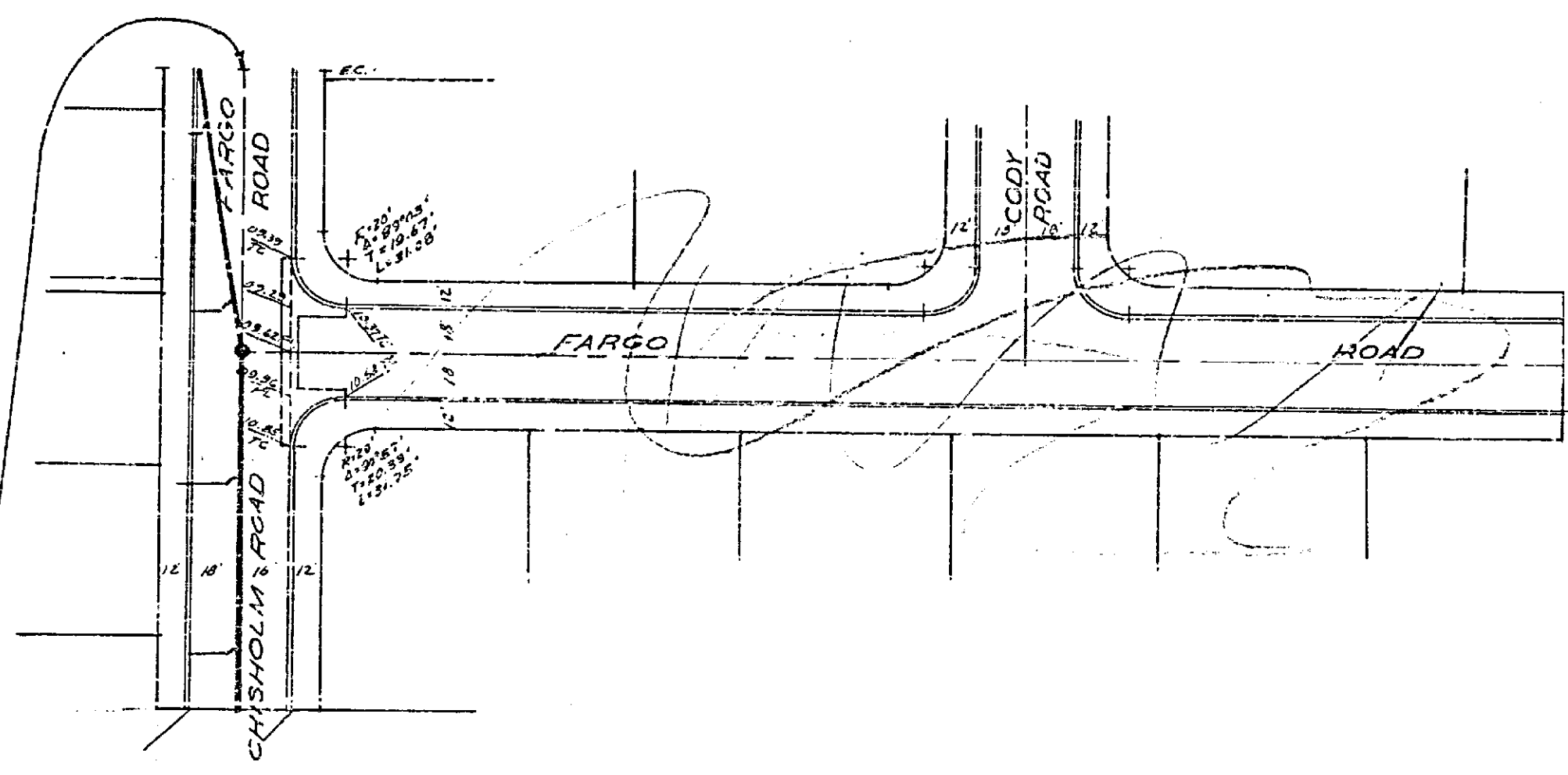
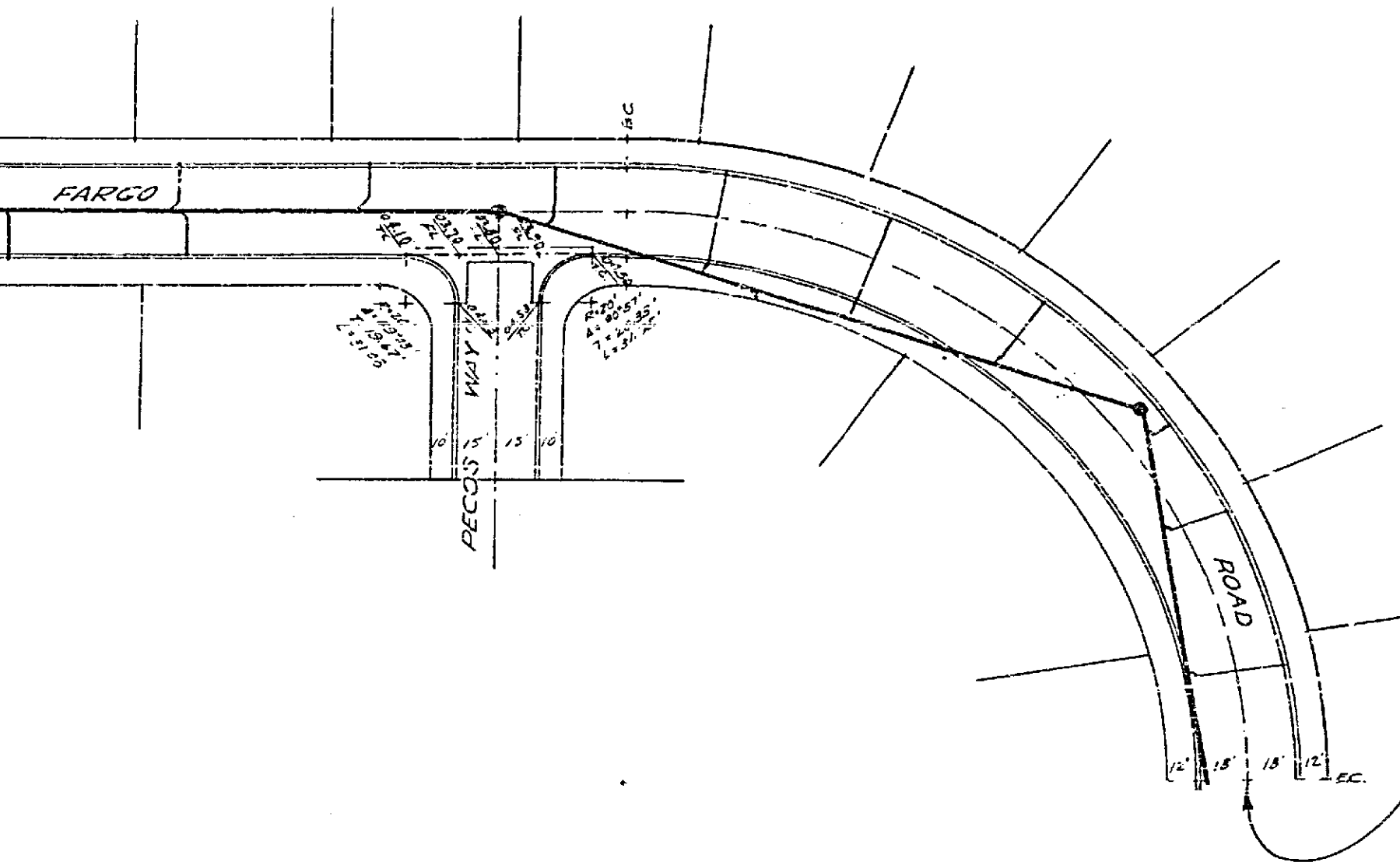
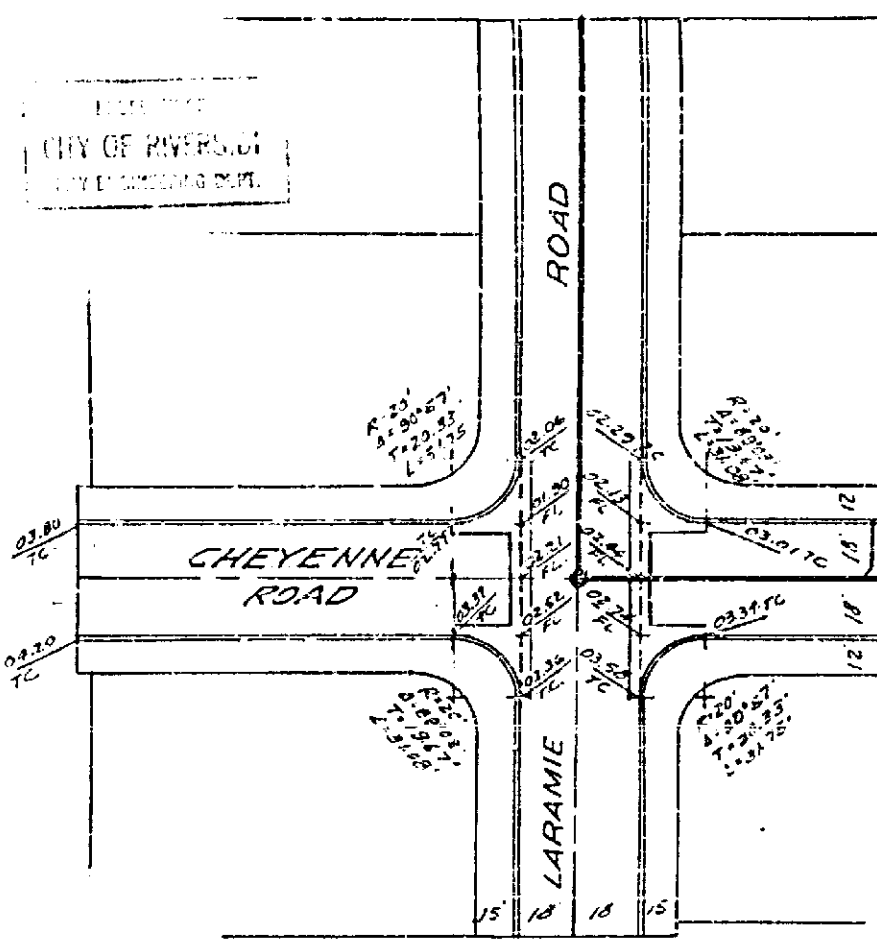
Approved *M. H. Farnie*  
CITY ENGINEER

PLAN & PROFILE  
SUN GOLD TERRACE - UNIT NO. 8  
CODY ROAD

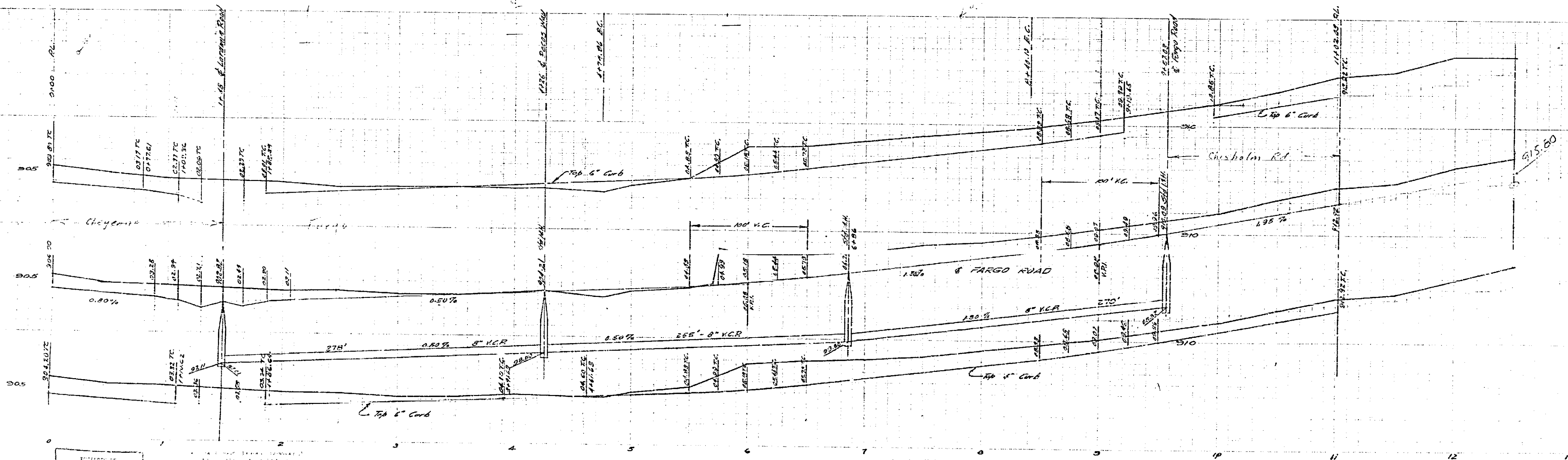
JULY 1953 J.F. DAVIDSON C.E.  
SCALE  
HORIZONTAL: 1" = 40'  
VERTICAL: 1" = 4'

PROPERTY OF  
CITY OF RIVERSIDE  
CITY ENGINEERING DEPT.

1006



PROPERTY OF  
CITY OF RIVERSIDE  
CITY ENGINEERING DEPT.



SHEET 3 OF 5 SHEETS

Approved *M. J. Davidson*  
CITY ENGINEER

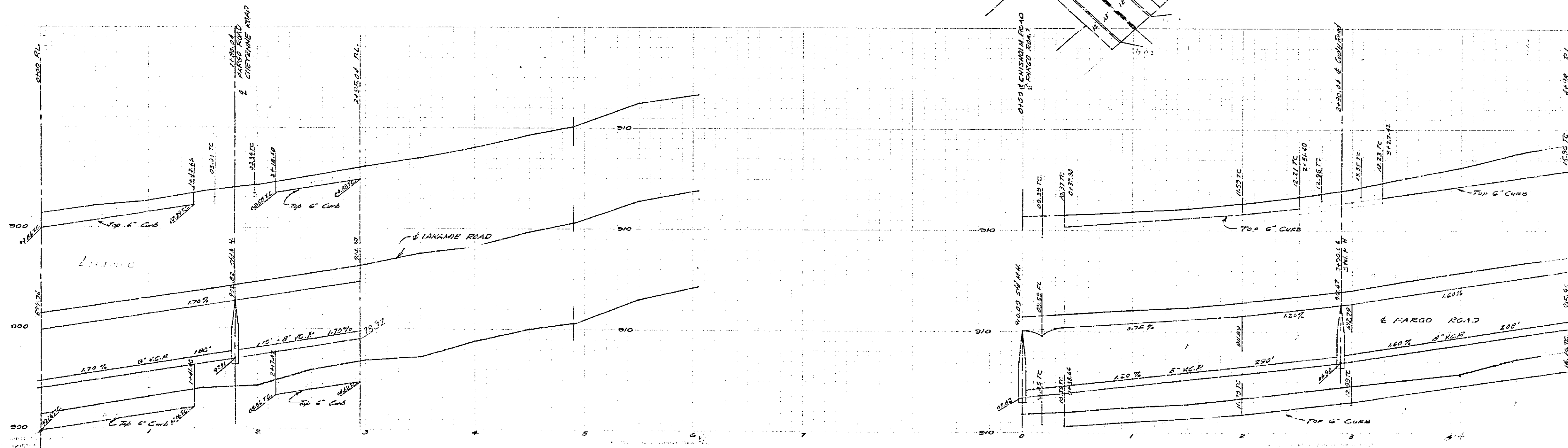
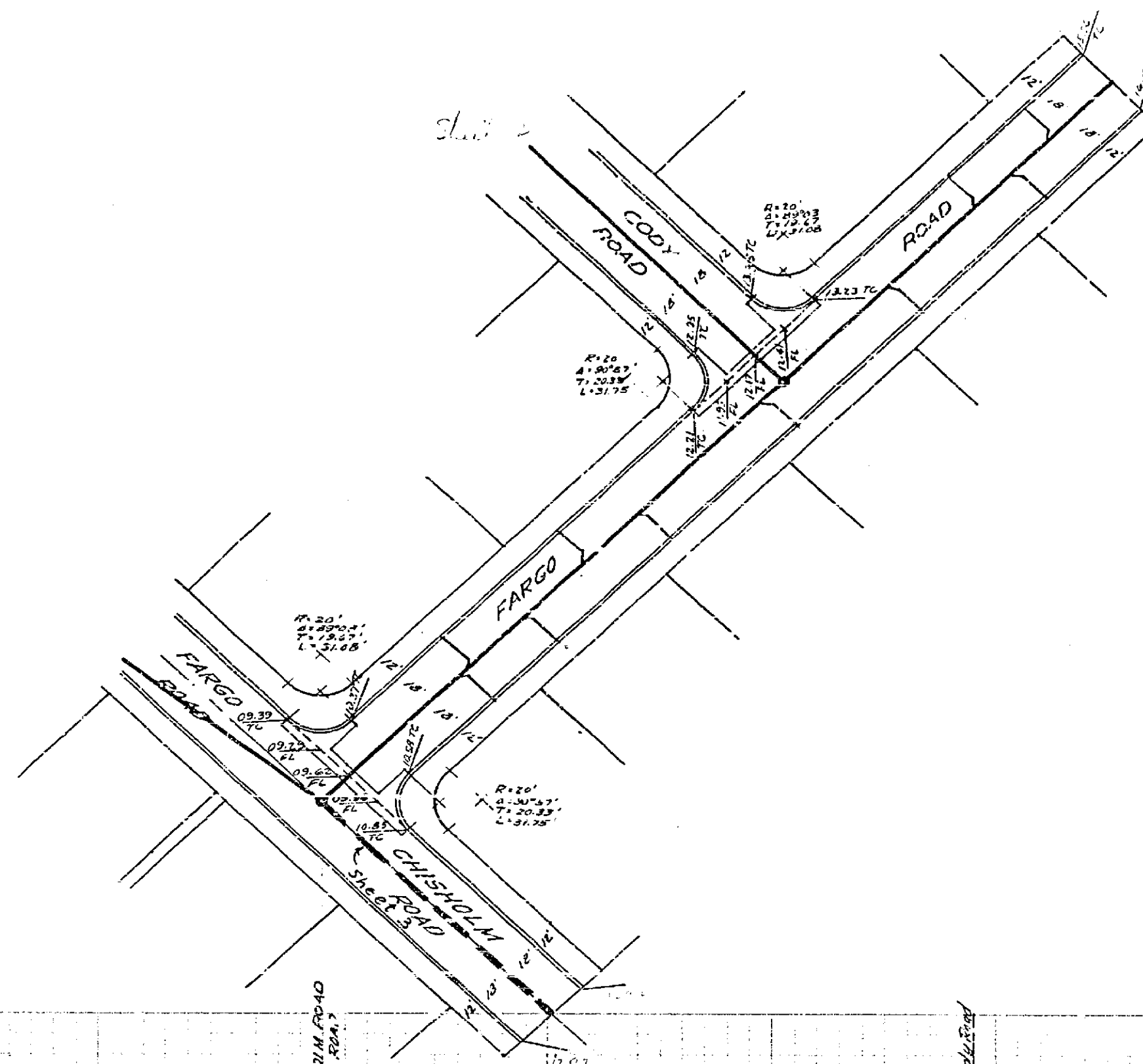
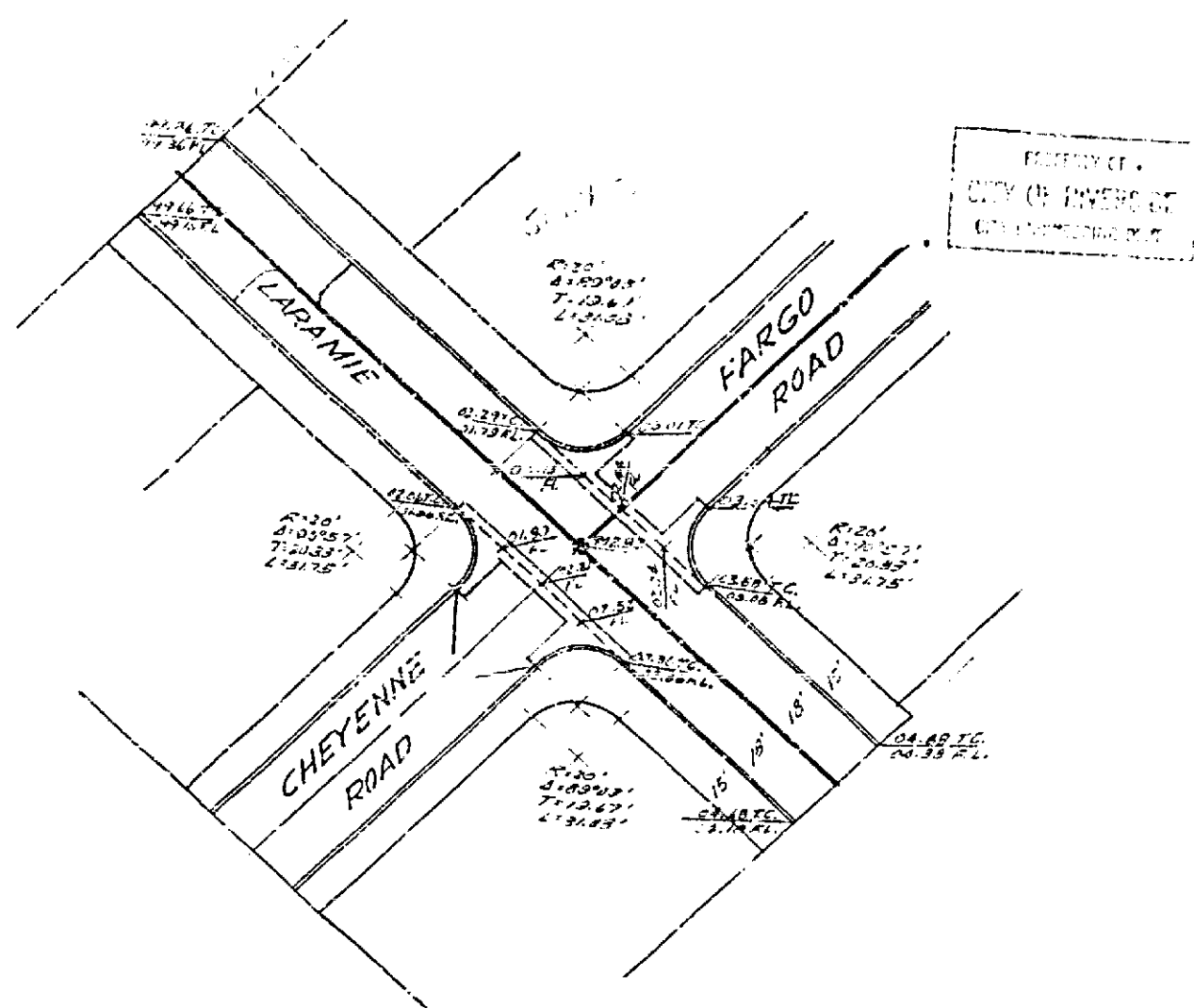
PLAN & PROFILE  
SUN GOLD TERRACE -- UNIT NO. 8

CHISHOLM ROAD - FARGO ROAD  
MAY 1953 J.F. DAVIDSON C.E.

SCALE  
HORIZONTAL 1"=20'  
VERTICAL 1"=4'

PROPERTY OF  
CITY OF RIVERSIDE  
CITY ENGINEERING DEPT.

1006



SHEET 4 OF 5 SHEETS

Approved: *M. J. Davison*  
CITY ENGINEER.

PLAN & PROFILE  
**SUN GOLD TERRACE - UNIT NO.**  
 LARAMIE ROAD - CHISHOLM ROAD  
 JULY 1953 JF DAVIDSON C.E.  
 SCALE  
 HORIZONTAL 1" = 40'  
 VERTICAL 1" = 4'

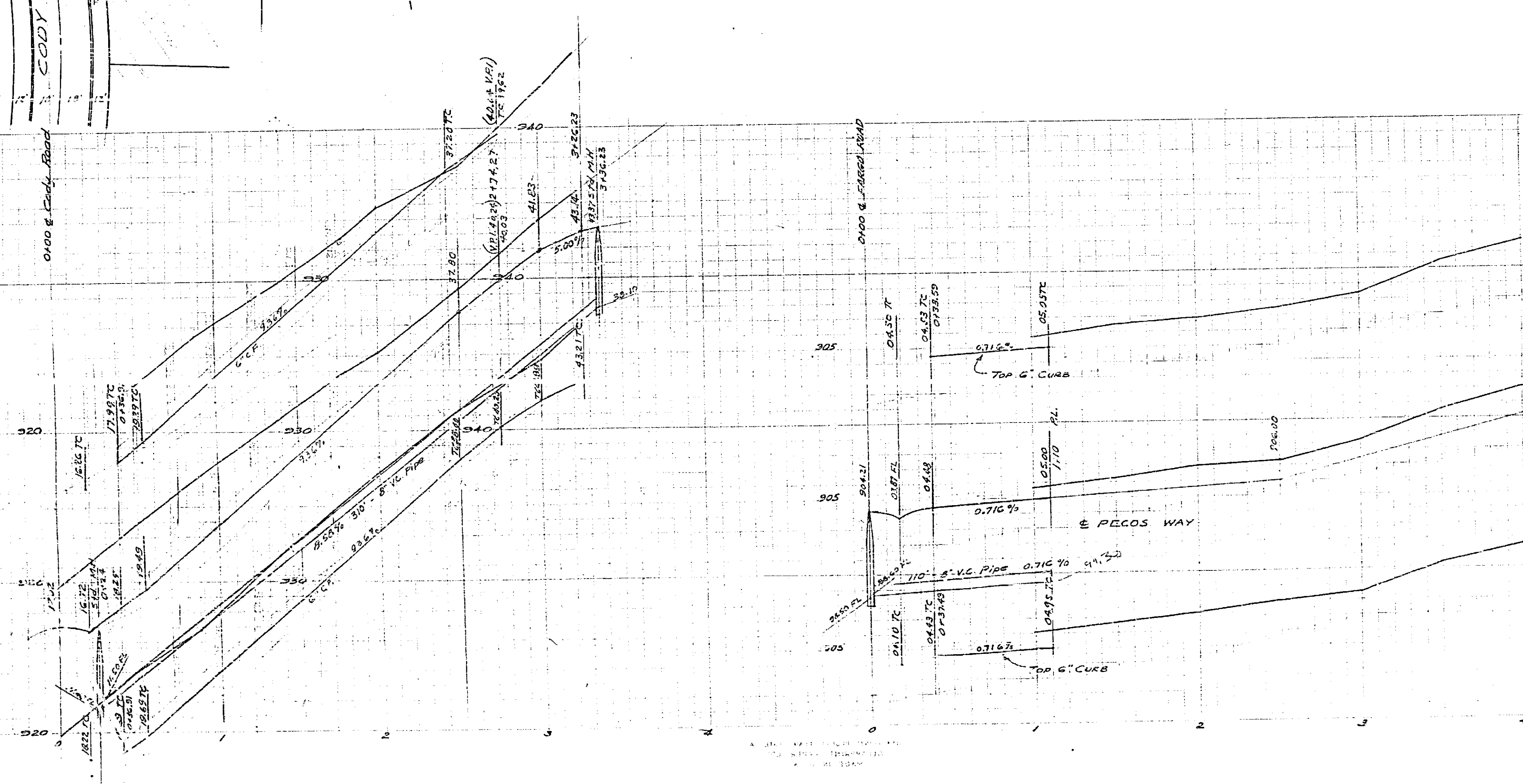
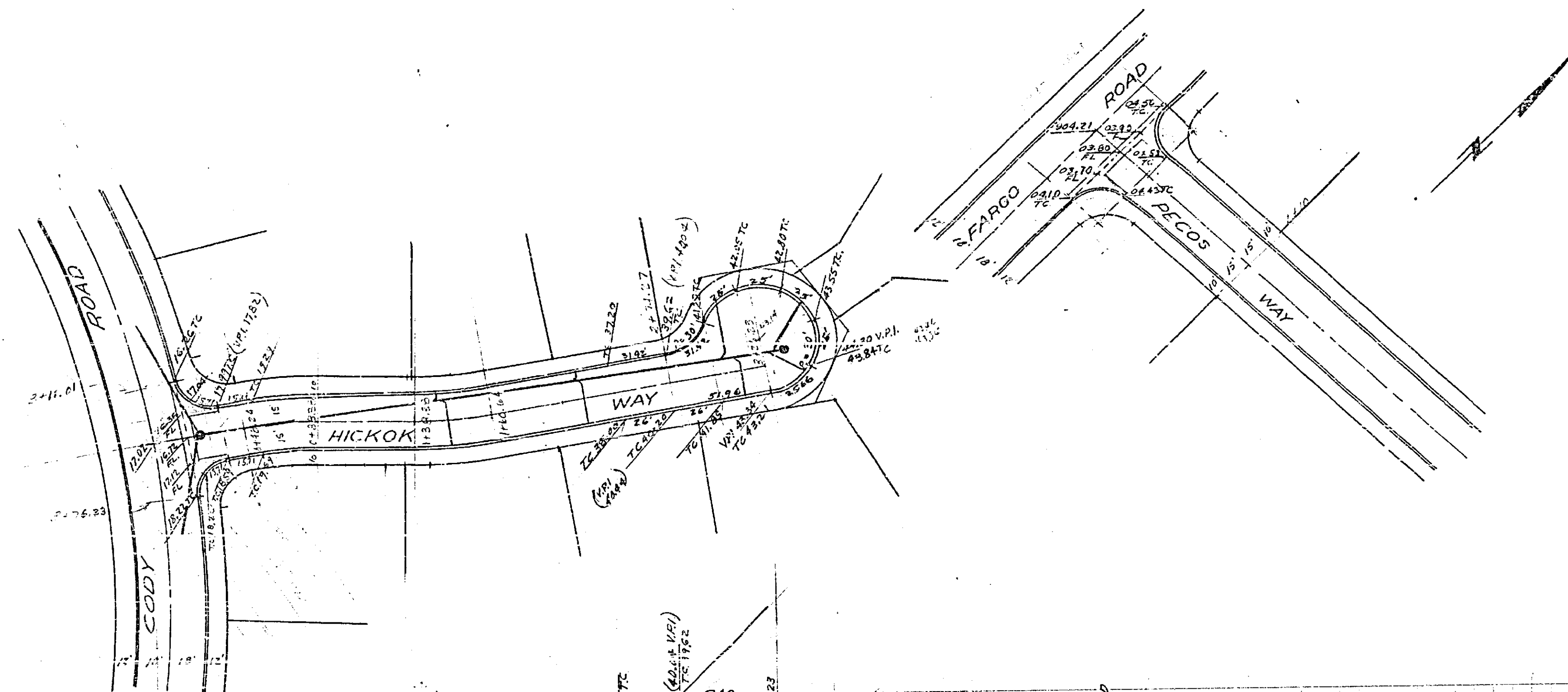
1006

PROPERTY OF  
 CITY OF RIVERVIEW  
 CIVIL ENGINEERING

PROPERTY OF  
 CITY OF RIVERVIEW  
 CIVIL ENGINEERING

PROPERTY OF  
CITY OF RIVERSIDE  
CITY ENGINEERING DEPT.

PROPERTY OF  
CITY OF RIVERSIDE  
CITY ENGINEERING DEPT.



SHEET 5 OF 5 SHEETS

Approved *M.H. J... ..*  
CITY ENGINEER.

PLAN & PROFILE  
SUN GOLD TERRACE - UNIT NO. 8  
HICKOK WAY - PECOS WAY

JULY 1953 J.F. DAVIDSON C.E.

SCALE  
Horizontal 1" = 40'  
Vertical 1" = 4'

PROPERTY OF  
CITY OF RIVERSIDE  
CITY ENGINEERING DEPT.

PROPERTY OF  
CITY OF RIVERSIDE  
CITY ENGINEERING DEPT.

1006