

1000 sq ft...
1000 sq ft...
1000 sq ft...



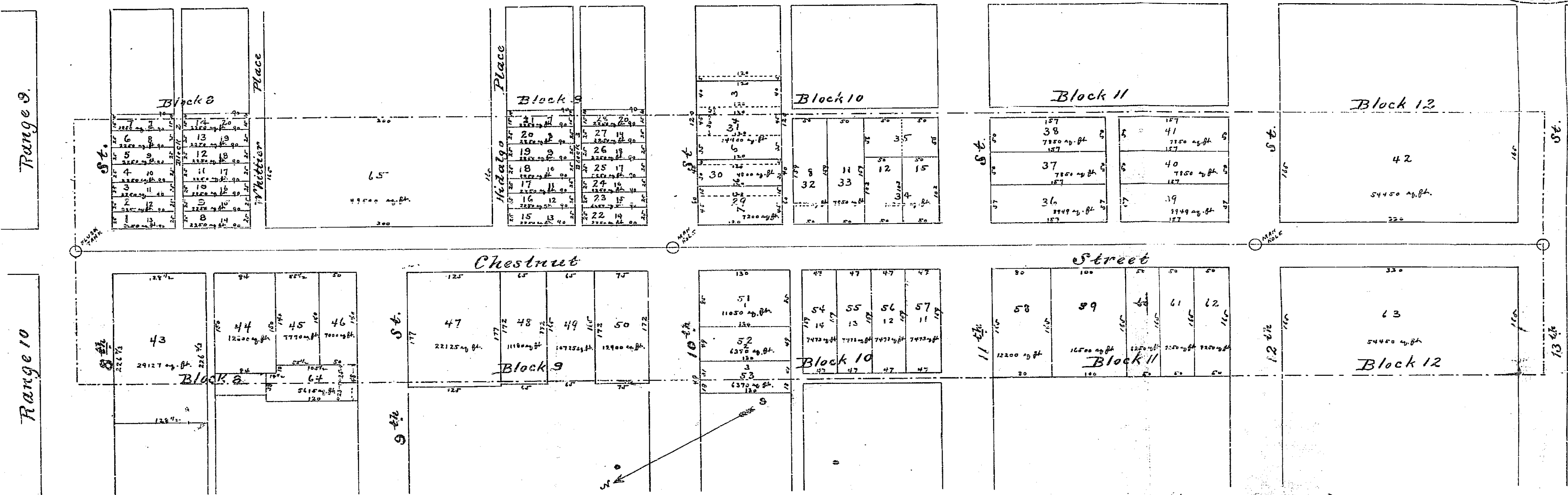
Diagram exhibiting Chestnut street and its intersecting streets from the center line of 13th street to the center line of 5th street in the City of Riverside on which work has been done under my official contract as Chief Superintendent of said city, with a Block of Ordinance dated the 24th day of October, for the construction of an eight inch sewer, two manholes and a flood tank as is more particularly described in said contract; showing the relative location of each detail lot portion of lot or parcel of land to the work done; numbered in red ink to correspond with the red ink numbers in the assessment; and showing the number of feet frontage assessed for said work contracted for and performed. The "No." is used as the contraction of the work number, and "ft" for the word "feet". The mark 'm' means feet. Figures in black ink next to property line show each the length of said line in feet. Other figures in black ink show the number of the lot. "sq." is the contraction used for square.

At said City of Riverside this 16th day of Dec. A.D. 1891.

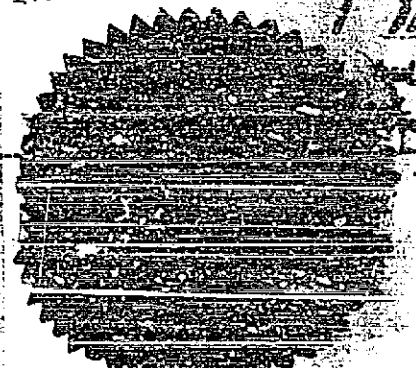
Jamuel Johnson
Superintendent of Street of the City of Riverside

Rendered Dec 17th 1891

Jamuel Johnson
Superintendent of Street of the City of Riverside



State of California }
County of San Bernardino } ss
City of Riverside }
I, H. S. Allaire, clerk in and for the city of Riverside, do hereby certify that the foregoing is a correct copy of the Plat of Chestnut Street shown the same was approved and adopted by the Board of Assessors at a meeting held January 5th 1892 that said Resolution is now on file of record in my office.
In witness whereof I have hereunto set my hand and affixed the official seal of the City of Riverside this 11th day of February 1892.



H. S. Allaire
Clerk
A-1001