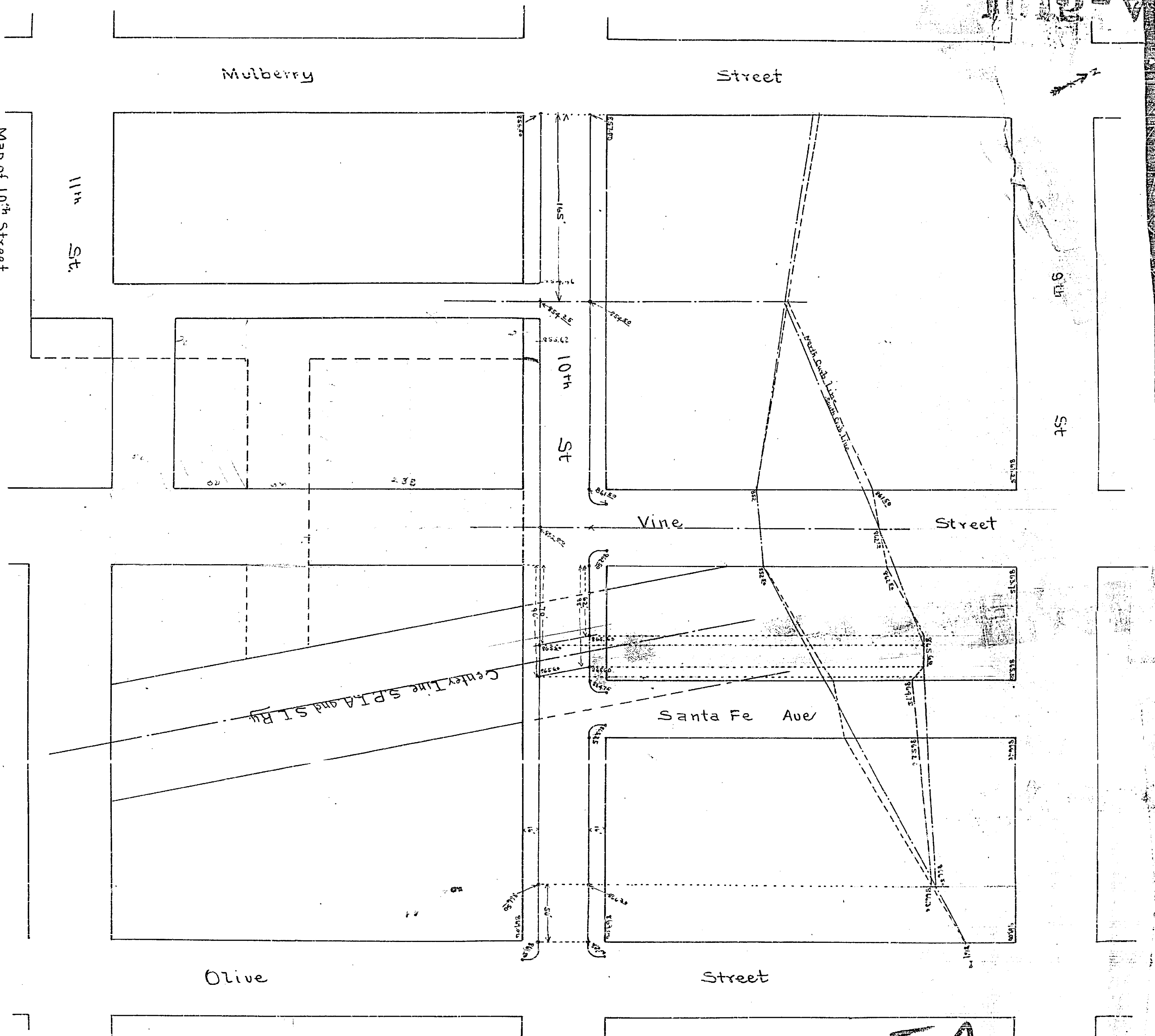


1012-A-19

1012-A-19

Map of 10<sup>th</sup> Street  
 from Mulberry St to Olive St  
 showing change of grade to  
 accommodate S.F. Ry. and S.L. Ry.  
 Scale Horizontal 1"=60'  
 Vertical 1"=6'  
 MAP

Riverside, Cal., Dec 22, 1903  
 C.F. Campbell  
 City Engineer



1012

1015A-A-19

