

Drwg. No.	Sheet No.	Total Sheets	File No.
1054	1	3	1054
Drawn	Checked	Approved	
<i>[Signature]</i>	<i>[Signature]</i>	<i>[Signature]</i>	

CITY OF RIVERSIDE
ENGINEERING DEPARTMENT

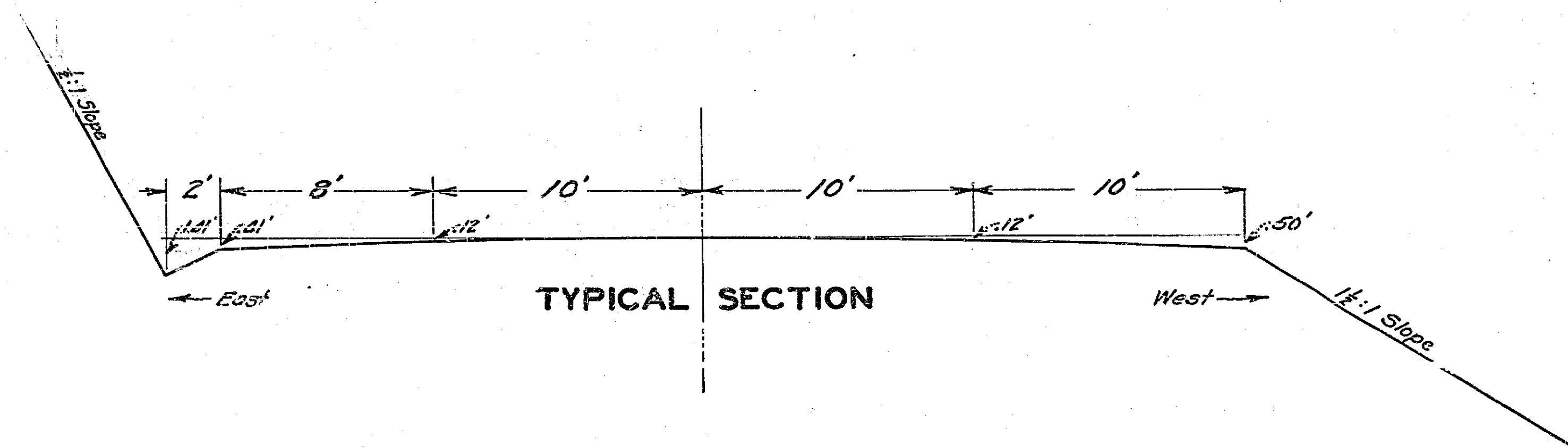
PLAN AND PROFILE OF

PROPOSED RUBIDOUX CUTOFF ROAD

FROM
STATE HIGHWAY BRIDGE ACROSS SANTA ANA RIVER
TO
TEQUESQUITE AVENUE

SCALES PLAN: 1" = 100'
PROFILE: HOR. 1" = 100' VERT. 1" = 6'

APPROVED *[Signature]* CITY ENGINEER

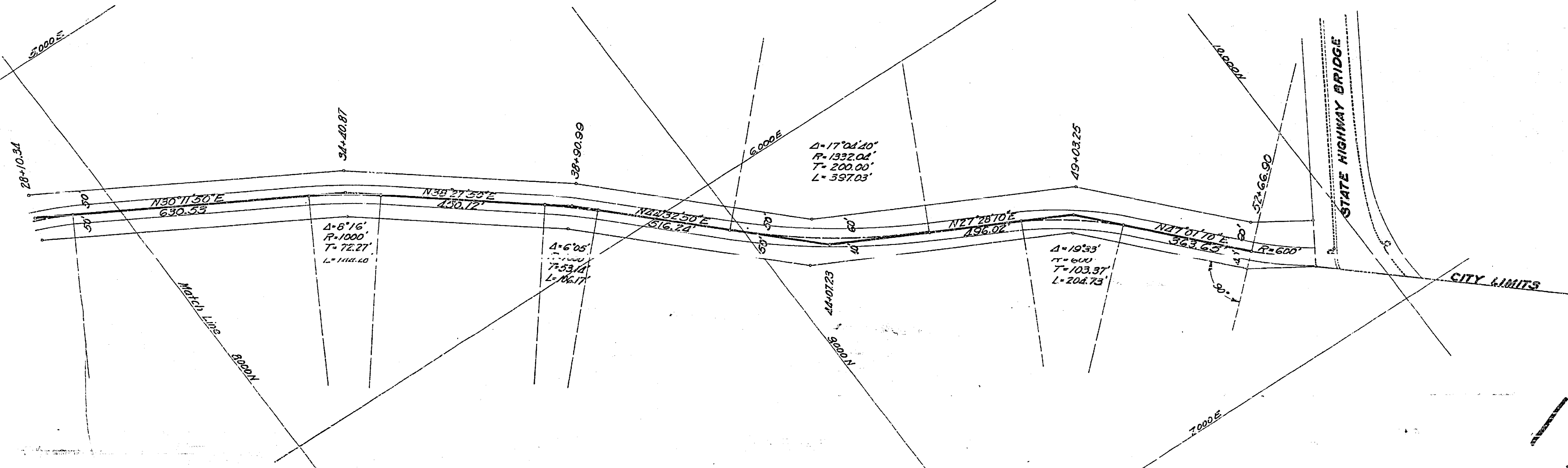
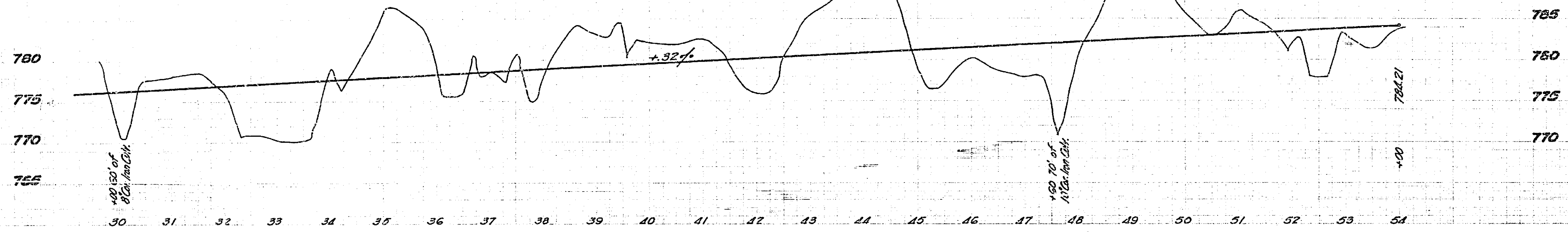


*H.B. - Stations shown are on heavy full line.
Profile and grade not corrected for curves
shown by dashed lines.*

ADOPTED BY THE MAYOR AND
COUNCIL OF THE CITY OF RIVERSIDE
THIS 28TH DAY OF JAN. 1916.

[Signature] CITY CLERK.
1017

1017



1017

Title Rubidoux Cutoff			
Drawn	Sheet	Total	Field
1-2-34	3	3	3
1-2-34	3	3	3
1-2-34	3	3	3