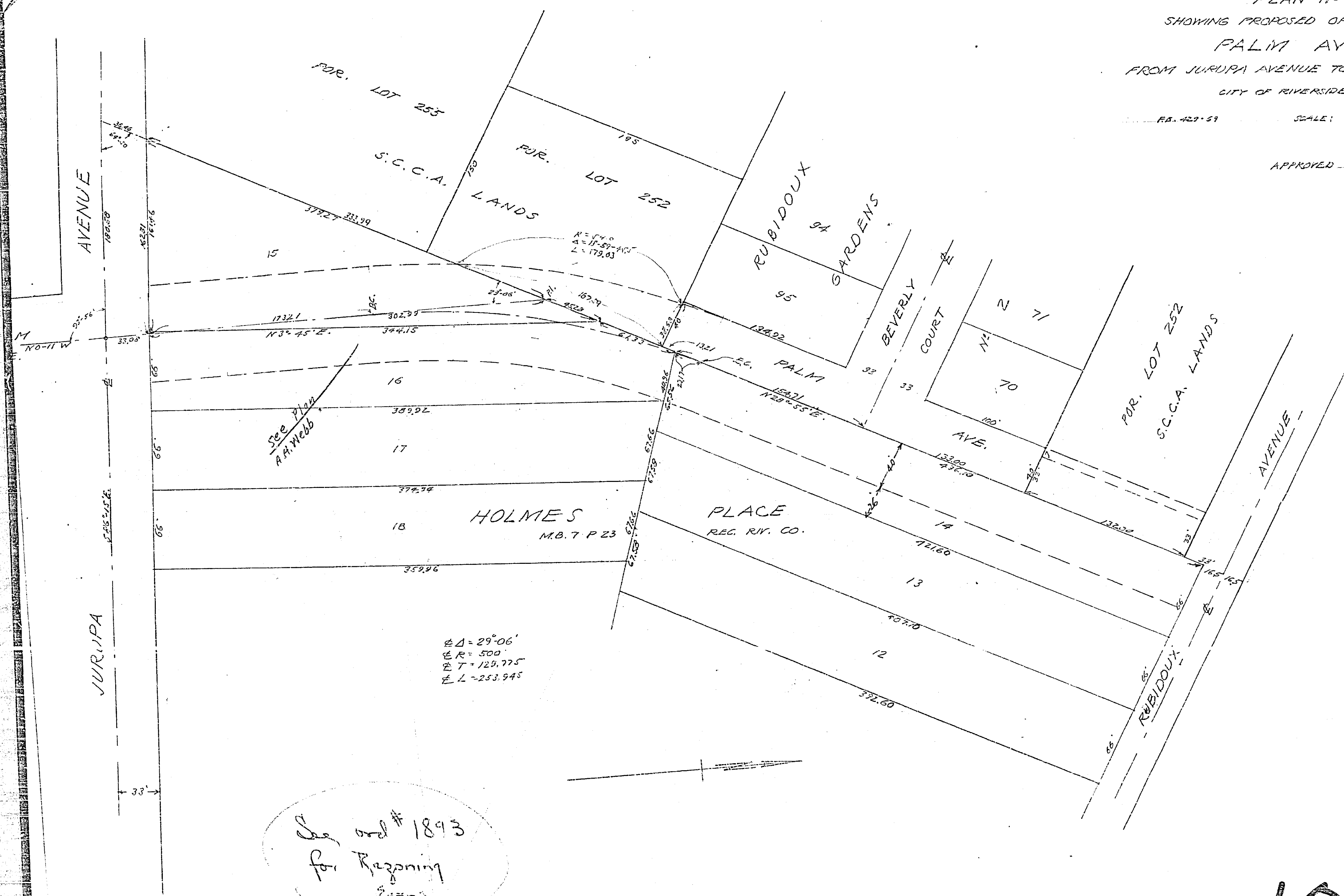


PLAN N^o 1020-I
 SHOWING PROPOSED OPENING OF
 PALM AVENUE
 FROM JURUPA AVENUE TO RUBIDOUX AVENUES
 CITY OF RIVERSIDE - CALIFORNIA

RD. 429-59 SCALE: 1/4" = 50 FT.

APPROVED: M.H. IRVING - CITY ENGINEER



See plan # 1893
 for Rezoning
 EIR

1020 I