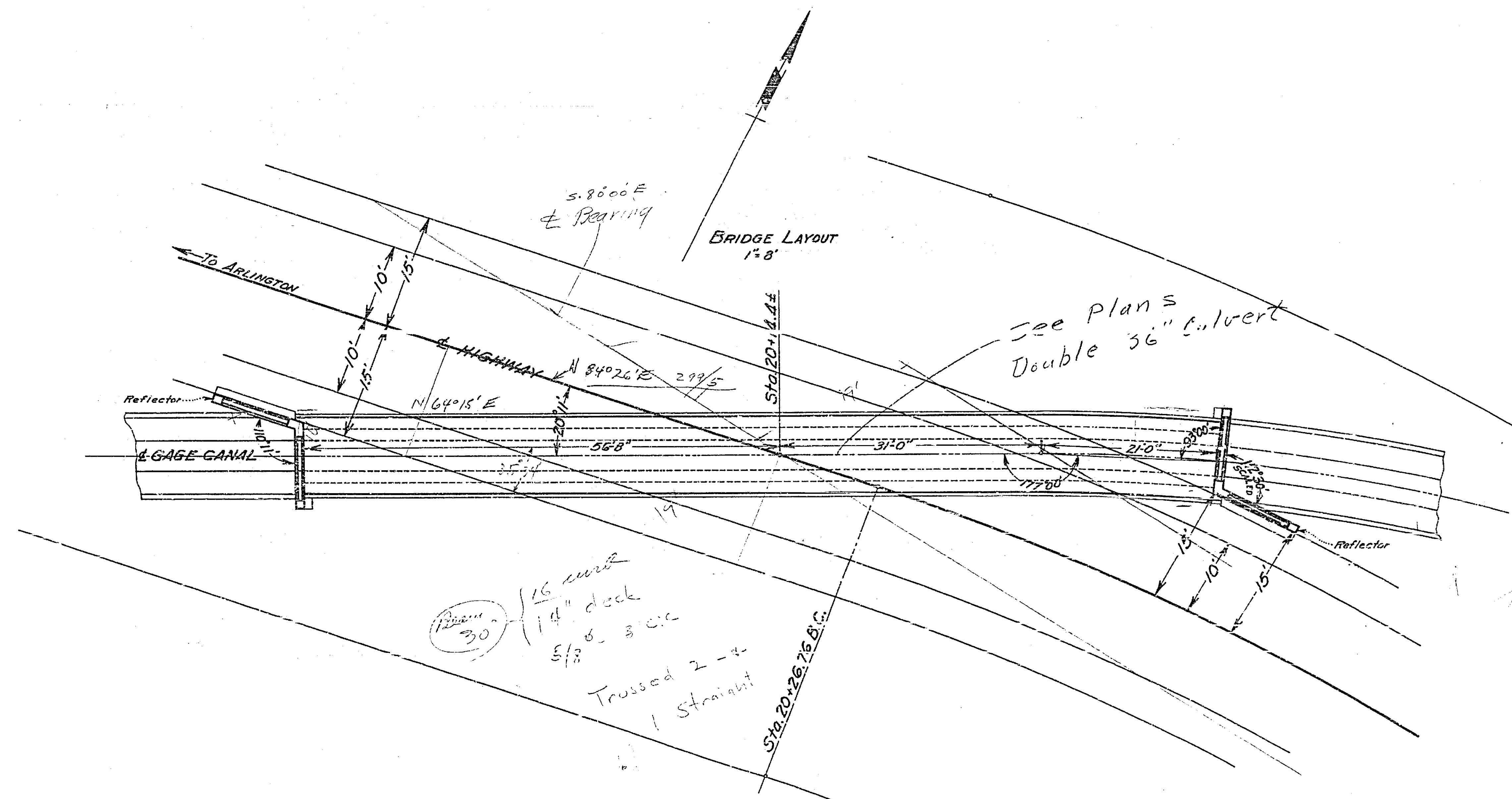


Drwg. No.	Sheet No.	Total Sheets	Field Book
1408-A	1	2	
Drawn	Checked	Approved	
<i>W.M. [unclear]</i>	<i>W.M. [unclear]</i>	<i>[unclear]</i>	

CITY OF RIVERSIDE
ENGINEERING DEPARTMENT

PLAN OF
BRIDGE
ACROSS GAGE CANAL
FOR
PROPOSED VAN BUREN STREET EXTENSION

APPROVED _____ CITY ENGINEER



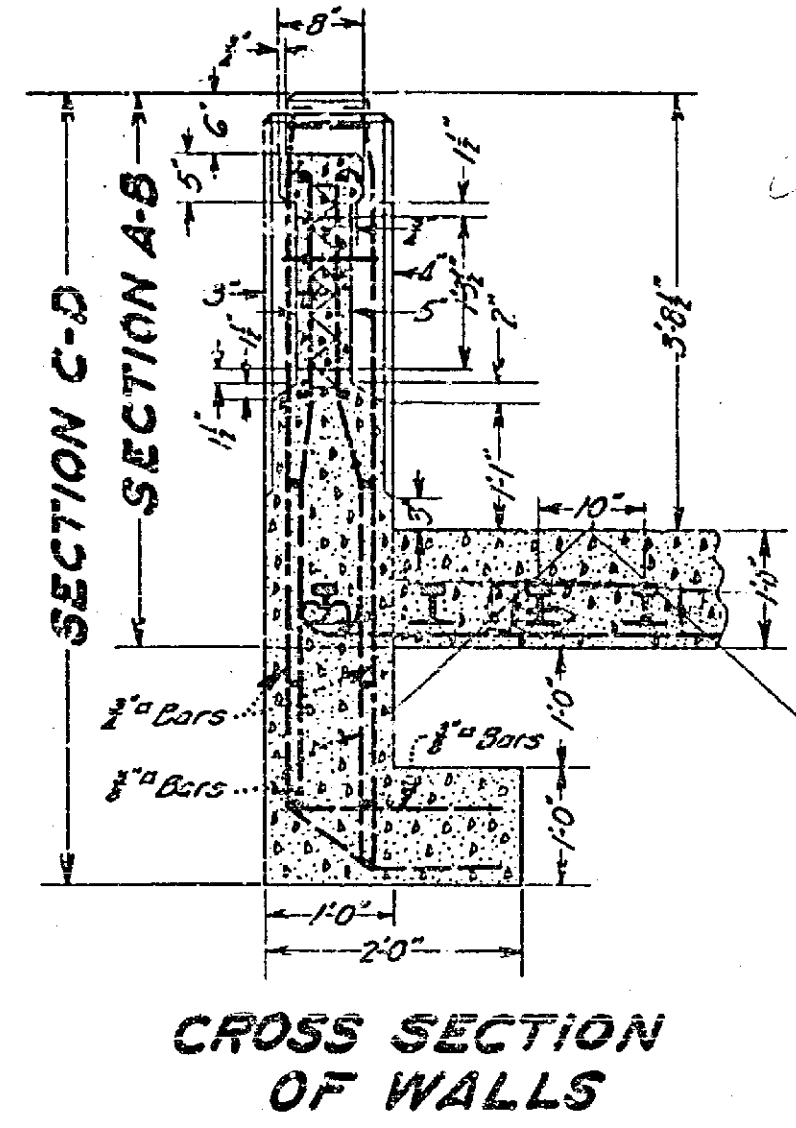
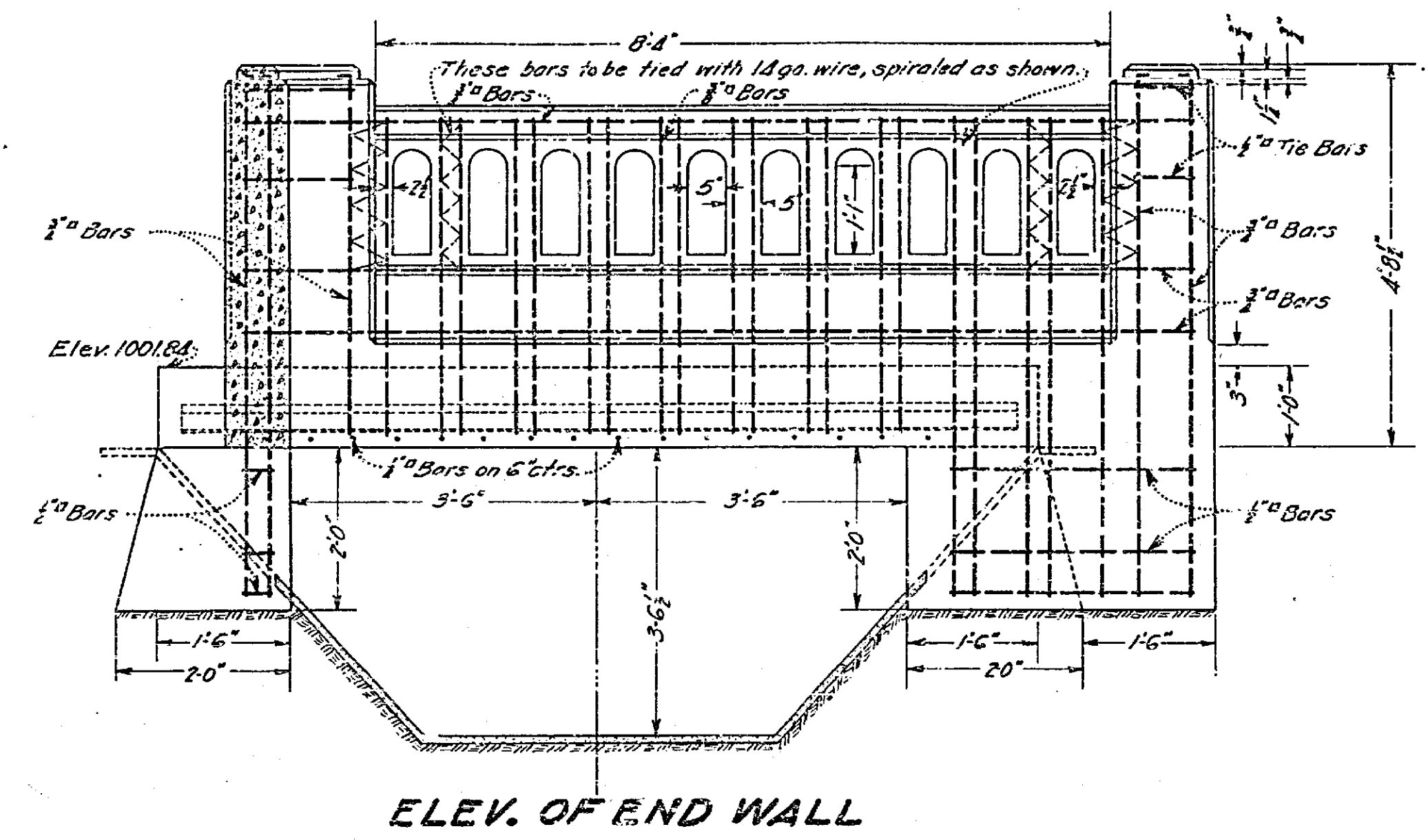
ADOPTED BY THE MAYOR AND
COUNCIL OF THE CITY OF RIVER-
SIDE, THIS _____ DAY OF _____
CITY CLERK

1022A

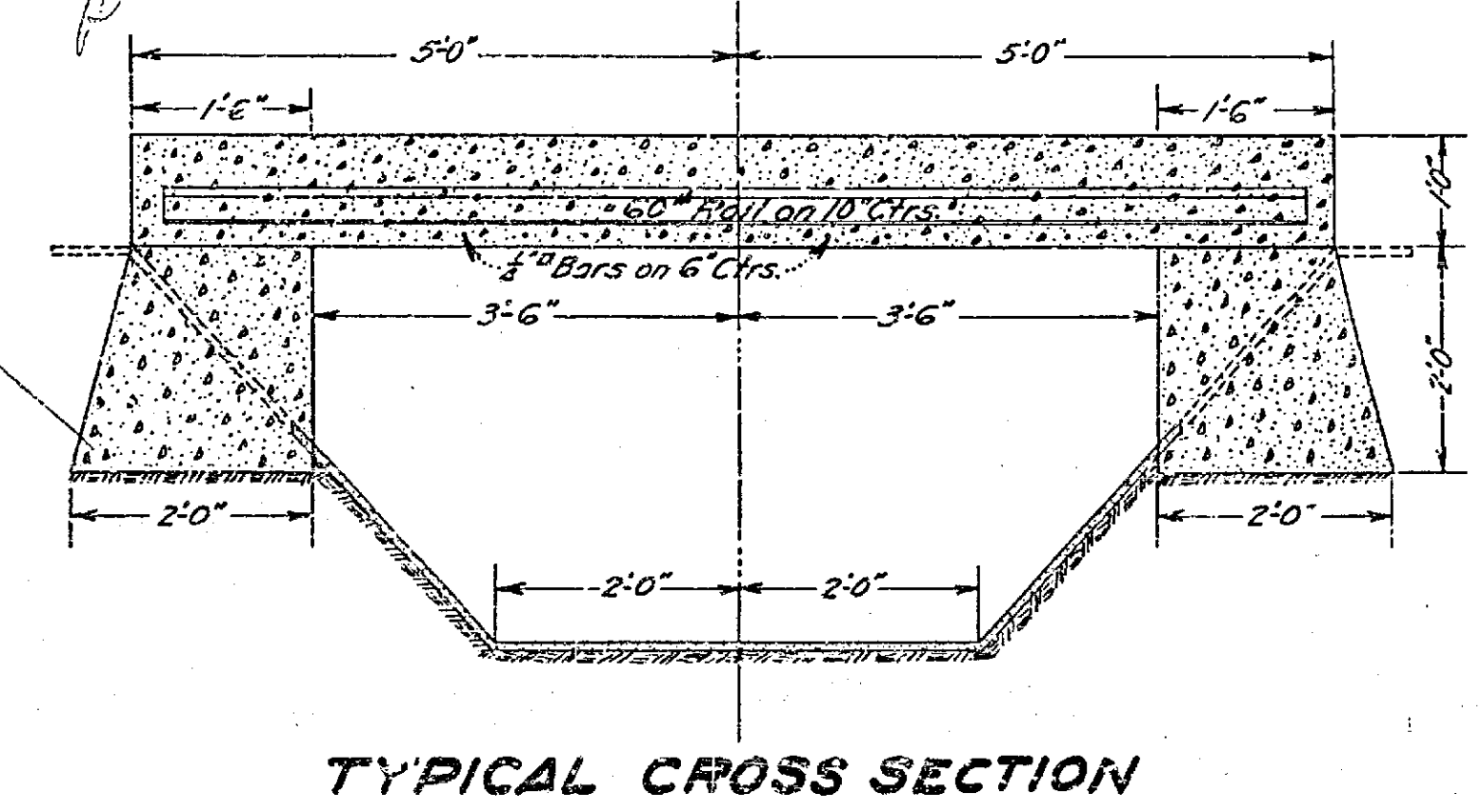
Revised Row No.	Drawn No.	Sheet No.	Total Sheets	Field Book
1022-A	1022-A	2	2	
	Drawn	Checked	Approved	
	<i>[Signature]</i>	<i>[Signature]</i>	<i>[Signature]</i>	
Title: Bridge across Gage Canal, Van Buren Street Extension.				

No. Prod.	Description	Weight
19.2	50# Rails 5'-6" long	25.220
24	3/4" Bars 14'-0" "	644
16	3/4" " 8'-0" "	246
8	3/4" " 7'-0" "	107
4	3/4" " 5'-6" "	42
12	3/4" " 12'-0" "	167
10	3/4" " 8'-0" "	62
8	3/4" " 3'-9" "	26
8	3/4" " 2'-10" "	20
6	3/4" " 1'-6" "	8
50	3/4" " 7'-6" "	180
50	3/4" " 6'-6" "	155
60	3/4" " 4'-9" "	136
54	3/4" " 1'-8" "	44
64	3/4" " 50'-0" "	407
Total weight bar steel		2,250
14 ga. Galv. Wire		60
7 days 1:2:4 Concrete		

BRIDGE DETAILS
SCALE 3/4"=1'

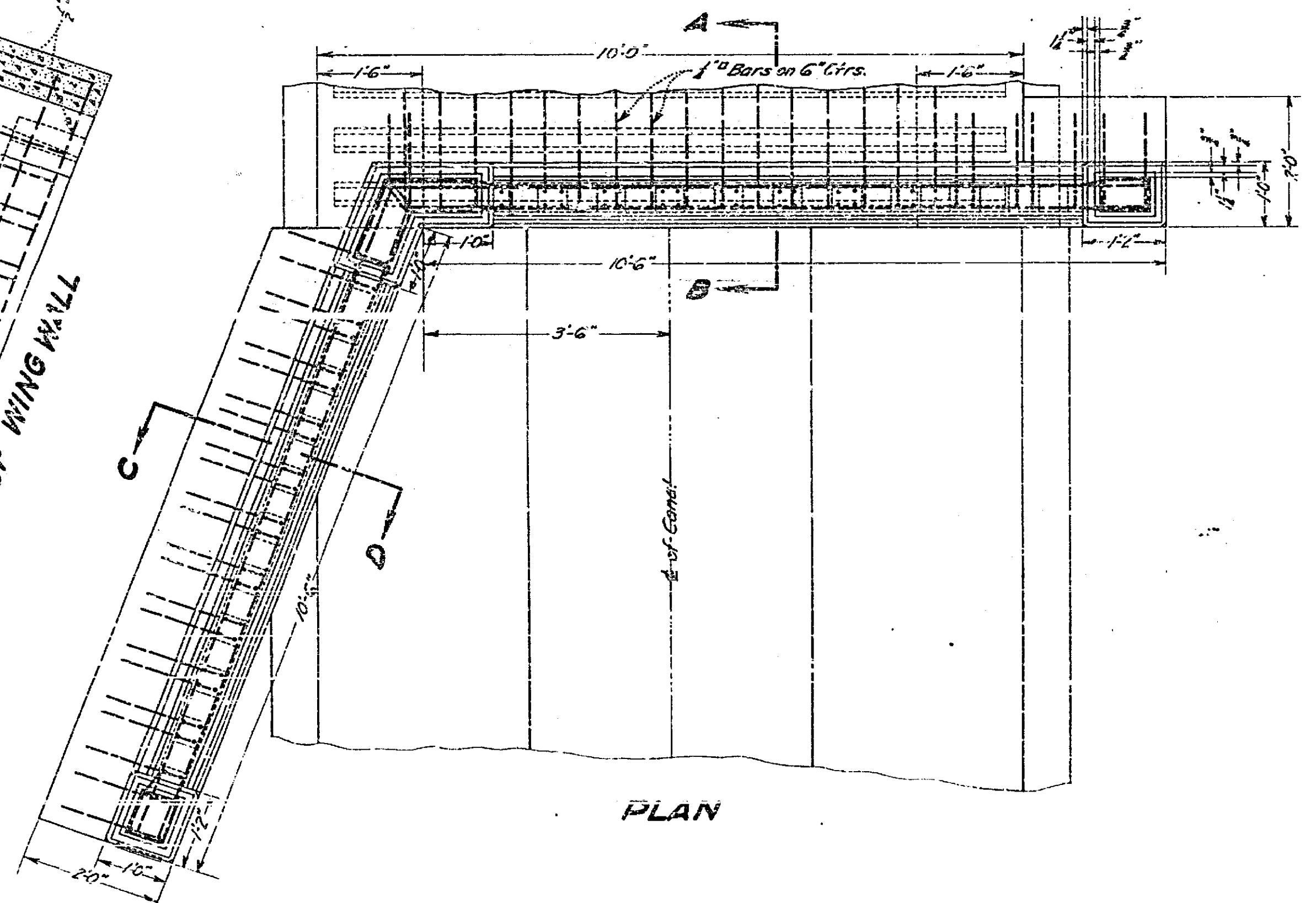
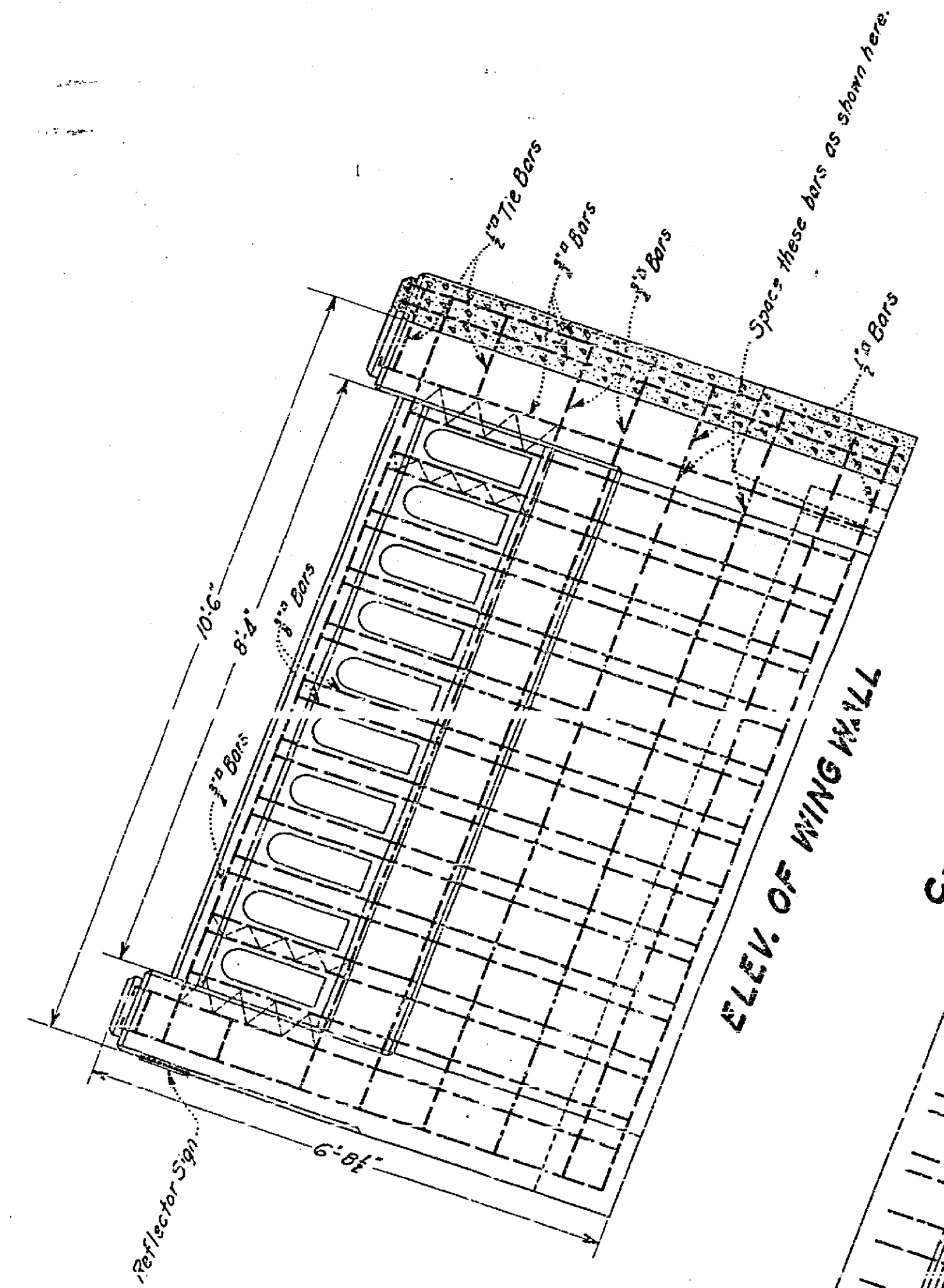


*not used
see tracing Dec. 1940*



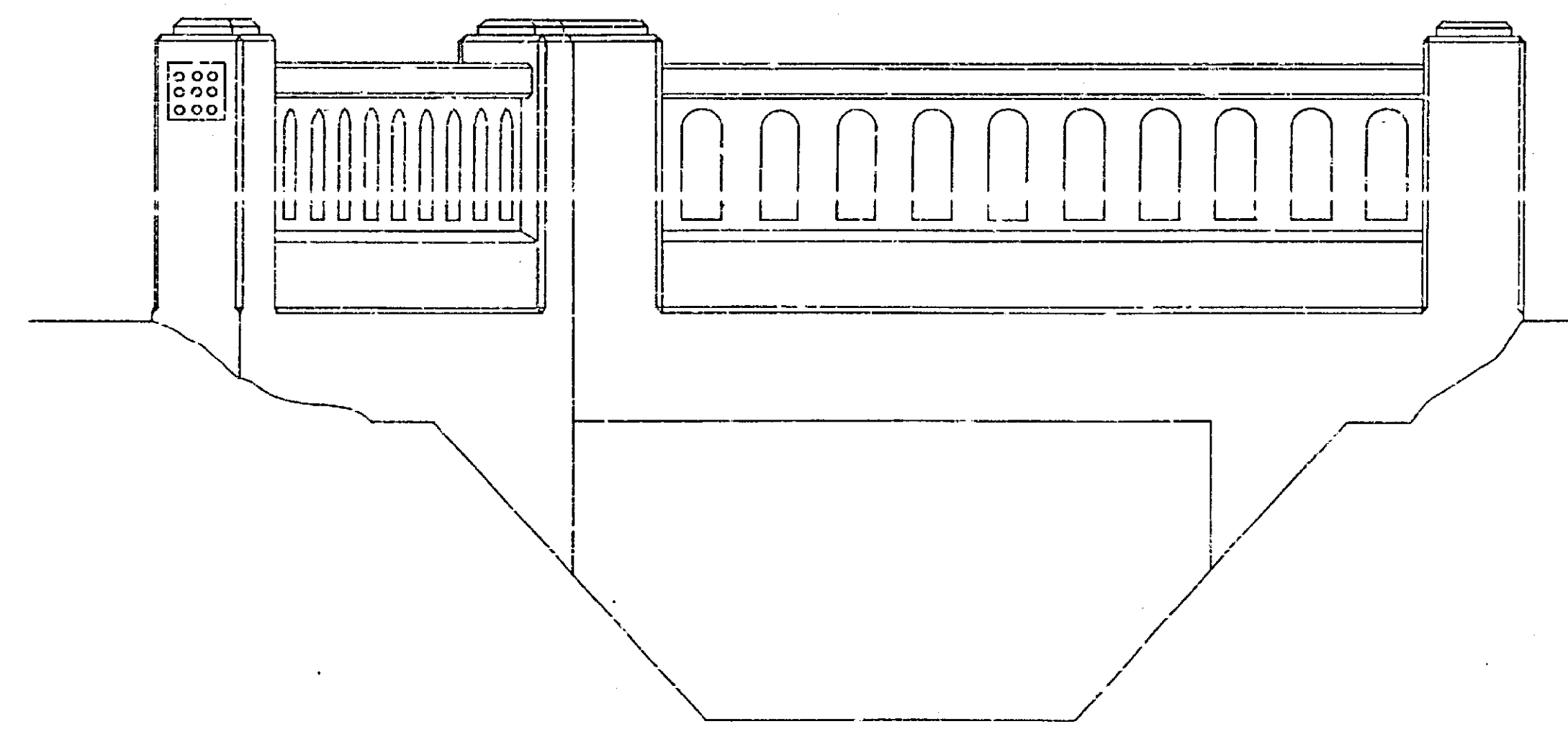
CROSS SECTION OF WALLS

TYPICAL CROSS SECTION



PLAN

*See Plans
Double 36" Culvert*



END VIEW

1022A