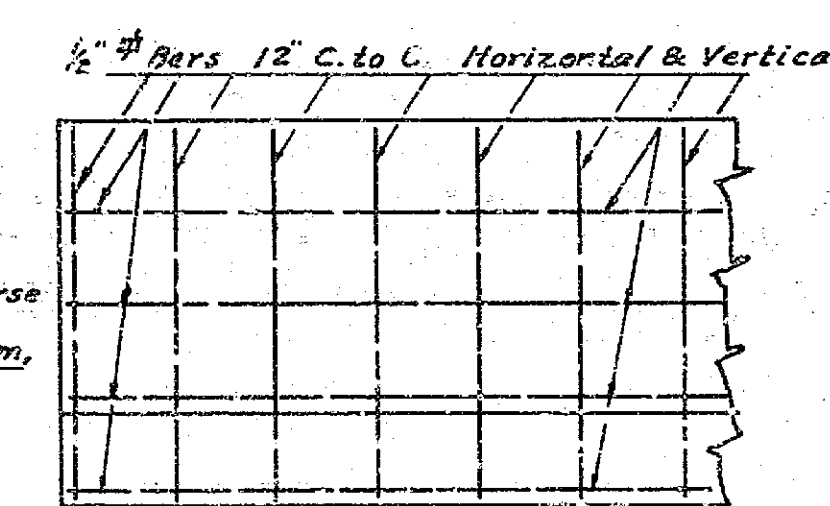
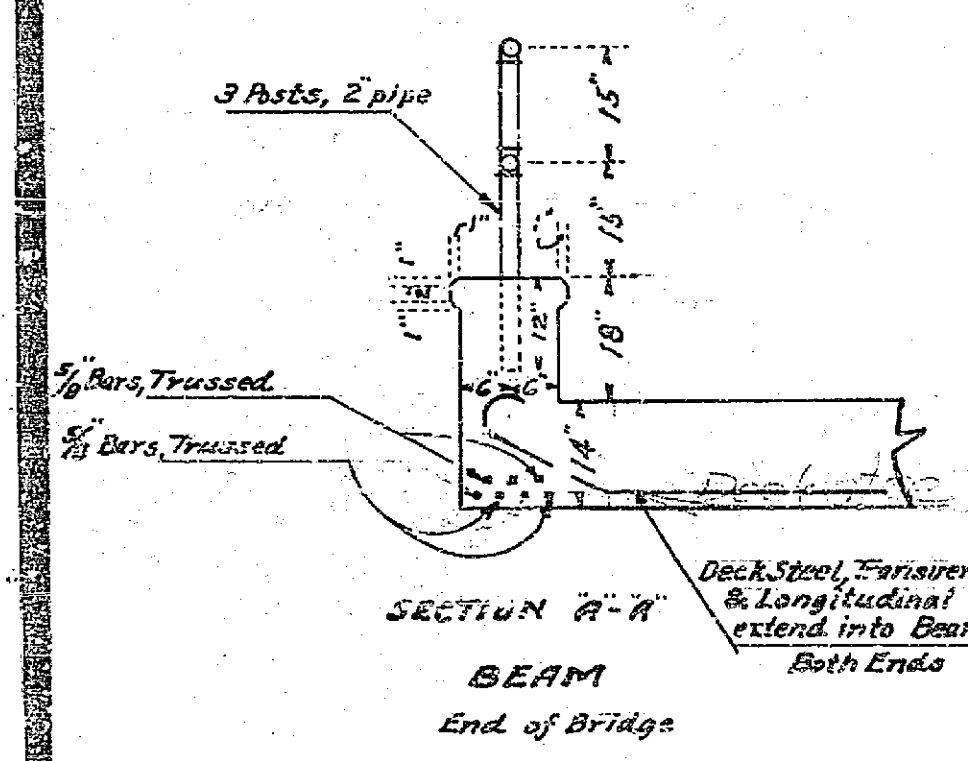
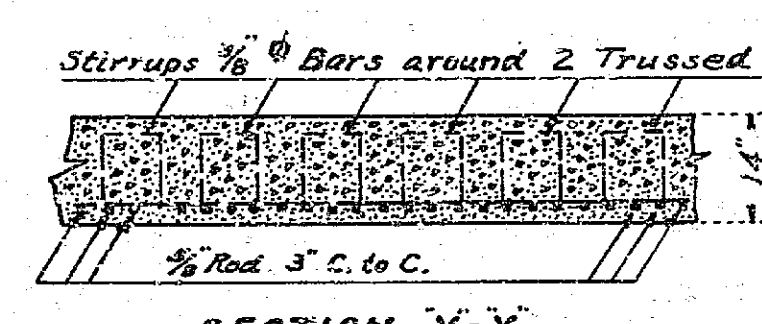


VAN BUREN ST EXTENSION PLAN OF BRIDGE			
Drawing Number	Sheet Number	Total Sheets	Field Book
1022-L	1	1	
Drawn by	Checked	Approved	
W.B.P. 12/1/40			

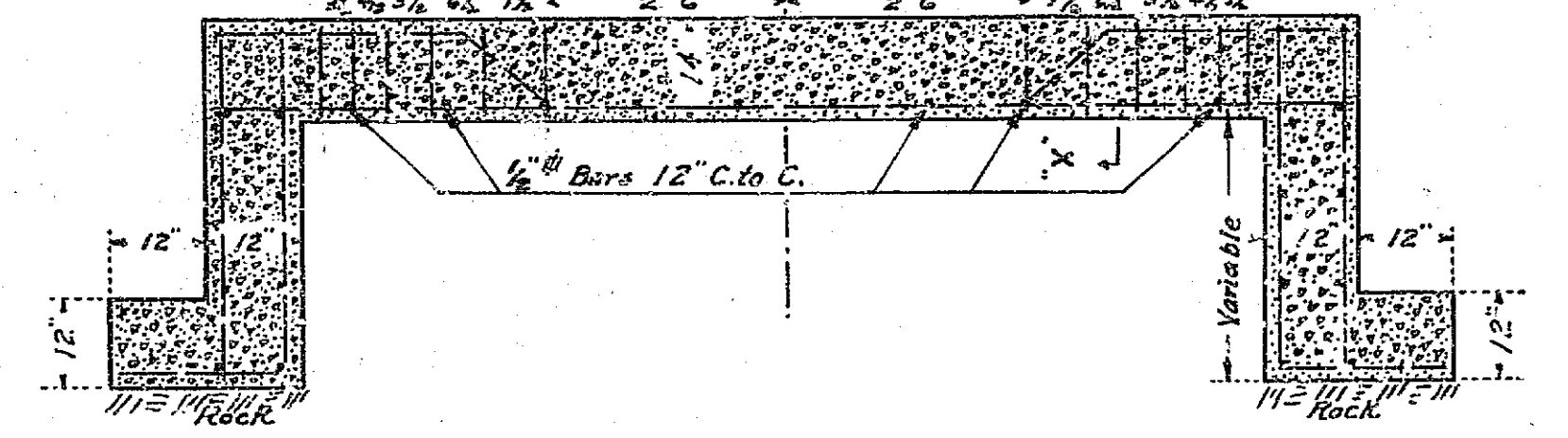
BRIDGE PLAN
Scale 1/4" = 1'



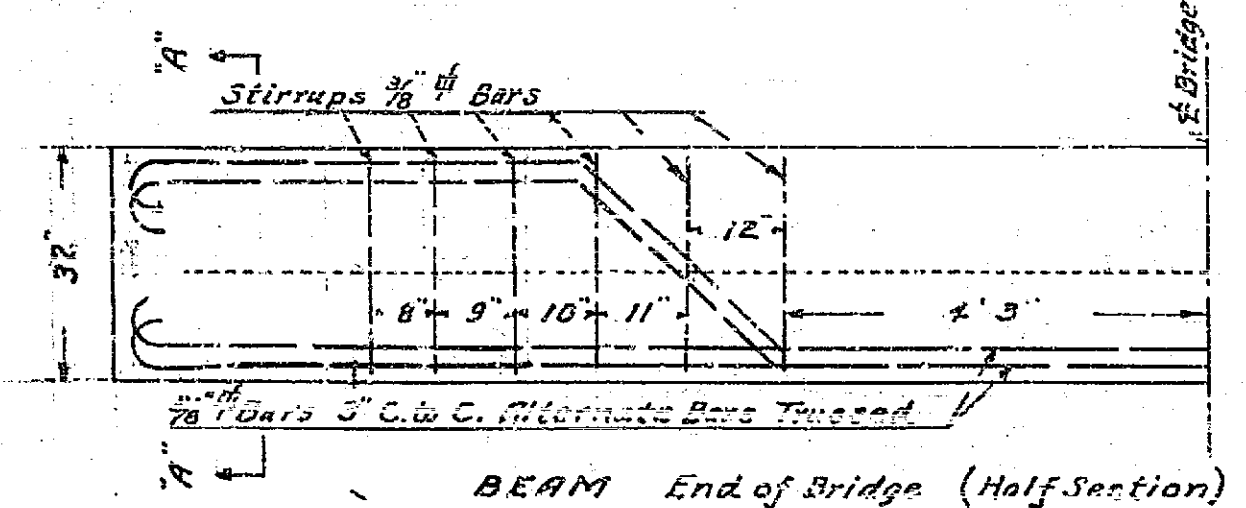
FOUNDATION WALL



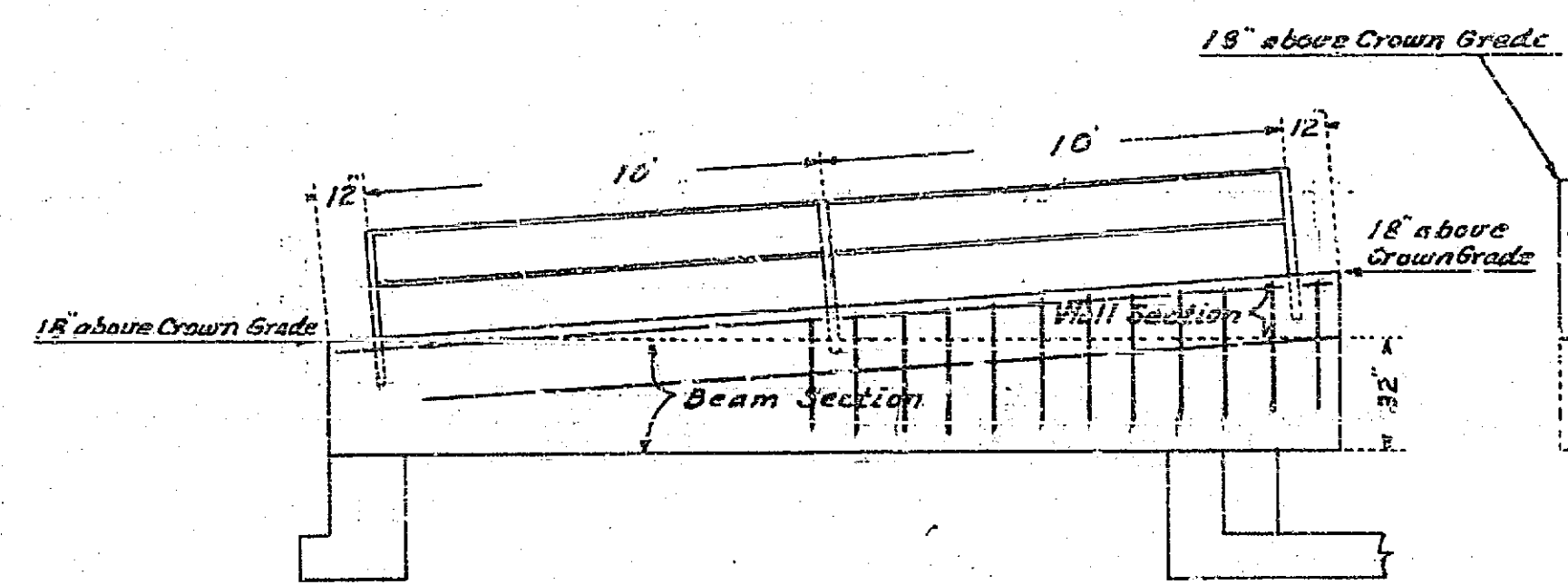
DETAILS SCALE 1/4" = 1'



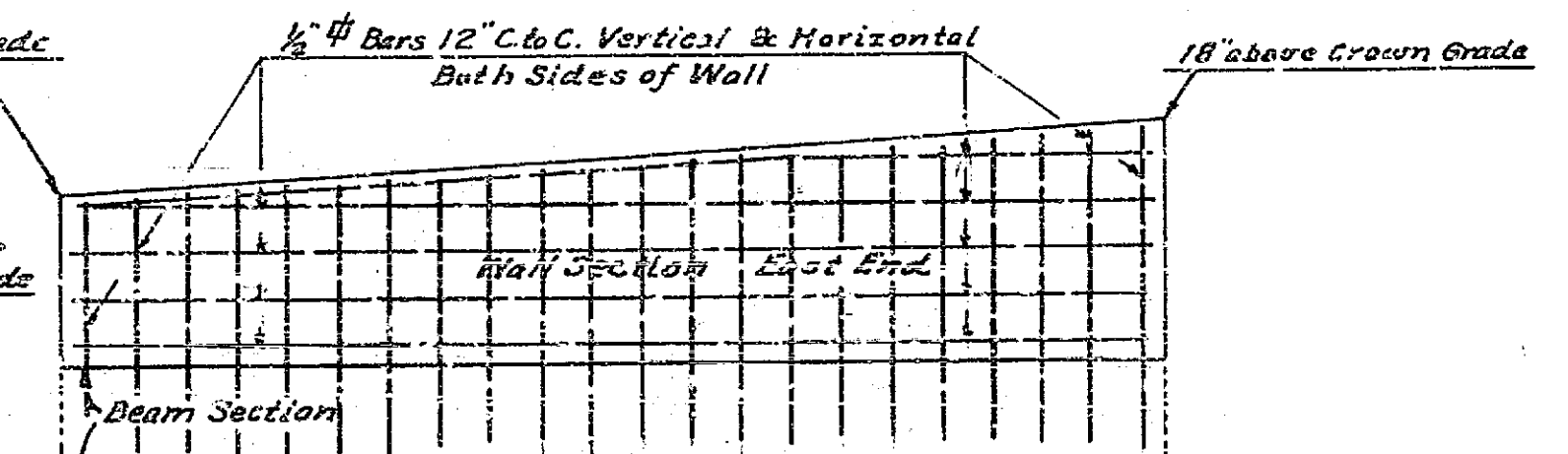
SECTION B-B



BEAM End of Bridge (Half Section)



WEST END OF BRIDGE
GUARD RAIL
Scale 1/4" = 1'



APPROVED AND ADOPTED BY THE MAYOR
AND COUNCIL OF THE CITY OF RIVERSIDE
THIS DAY OF 1940.

CITY CLERK, CITY OF RIVERSIDE.

1022L