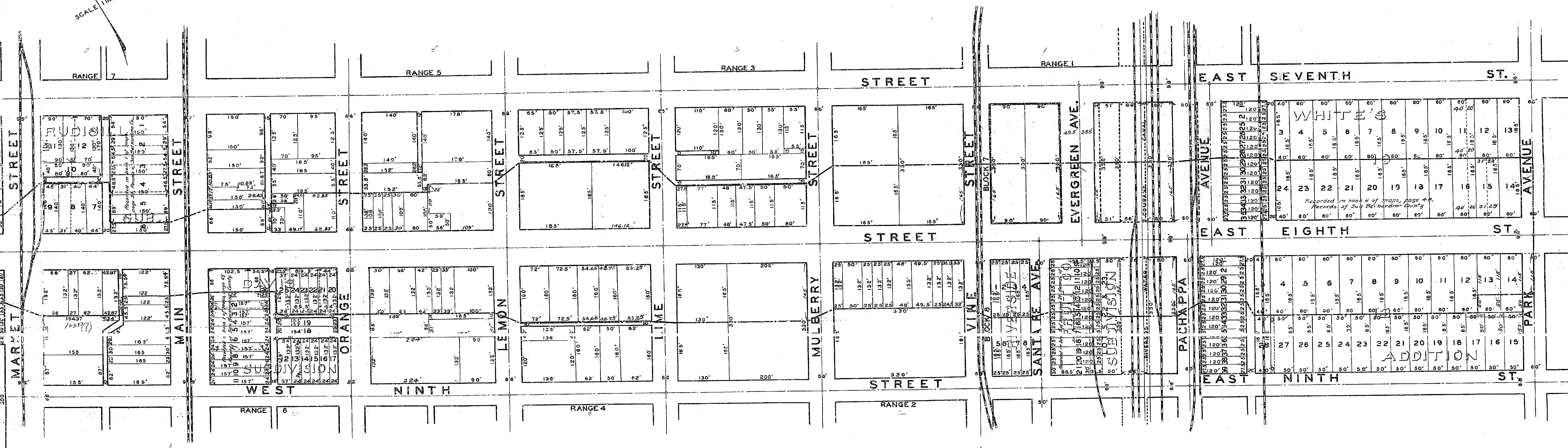


LEGEND

DISTRICT BOUNDARY LINE SHOWN THUS: \_\_\_\_\_

SHEET NO. 1, OF 2 SHEETS.

SCALE 1"=100 FT.



# ACQUISITION AND IMPROVEMENT DISTRICT NO. 6 OF THE CITY OF RIVERSIDE

FOR THE OPENING AND EXTENDING OF EIGHTH STREET  
FROM ITS INTERSECTION WITH PEPPER STREET WESTERLY TO THE  
EASTERLY TERMINUS OF BUENA VISTA AVENUE.

## PART I

MAP SHOWING PROPERTY TO BE ACQUIRED, DISTRICT TO BE BENEFITED BY; KNOWN AS "THE ASSESSMENT DISTRICT;" ~~THE ZONES WITHIN SAID DISTRICT AND THE PERCENTAGE OF THE SUM TO BE RAISED FROM EACH ZONE FOR EXPENSES OF THE OPENING AND EXTENDING PROPOSED;~~ ALL IN ACCORDANCE WITH THE PROVISIONS OF THE ACQUISITION AND IMPROVEMENT ACT OF 1925, APPROVED MAY 23, 1925, COMMONLY KNOWN AS THE "MATTOON ACT."

SUBMITTED: \_\_\_\_\_

APPROVED AS TO FORM: \_\_\_\_\_

APPROVED: \_\_\_\_\_  
CITY ENGINEER

