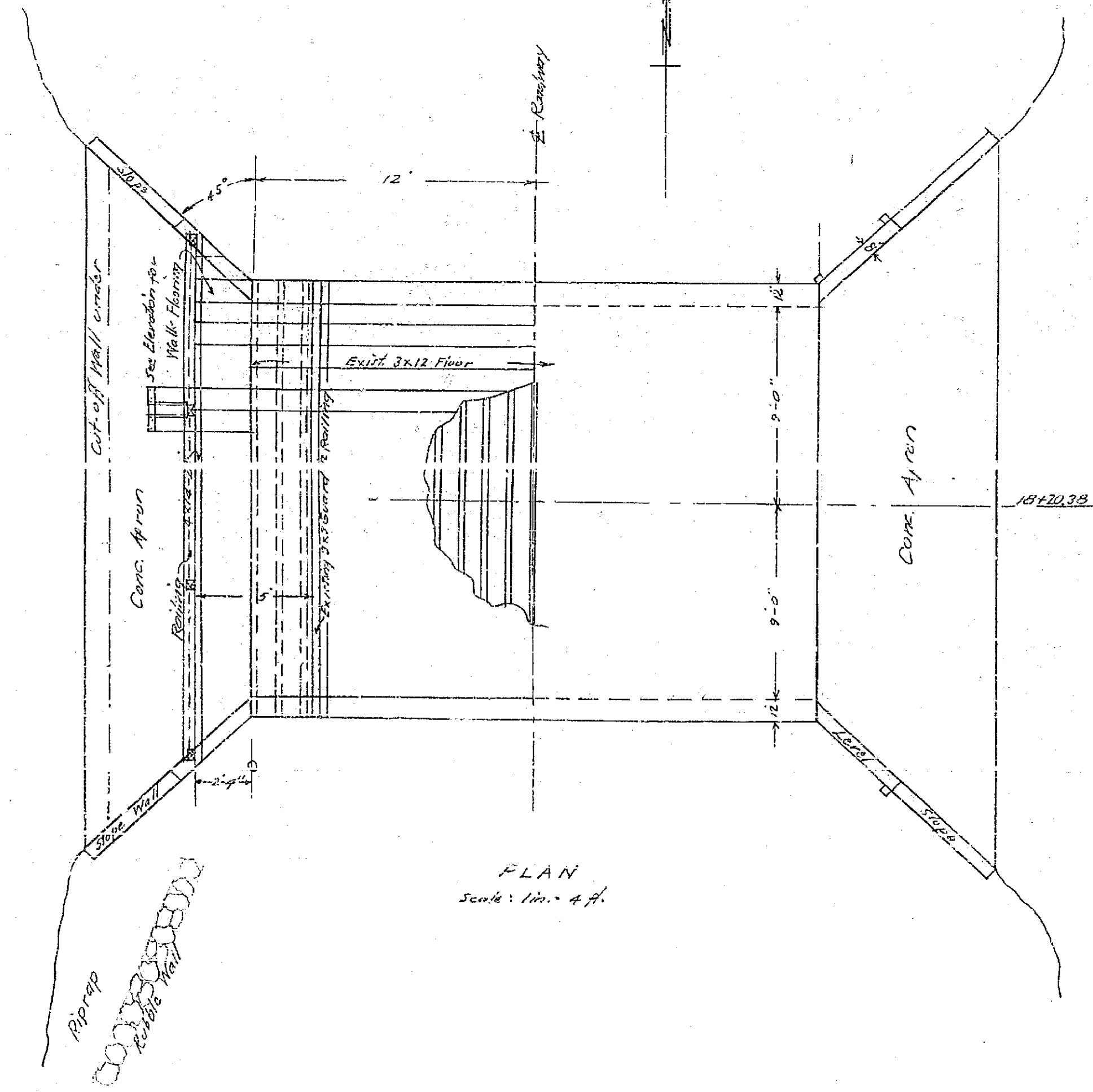
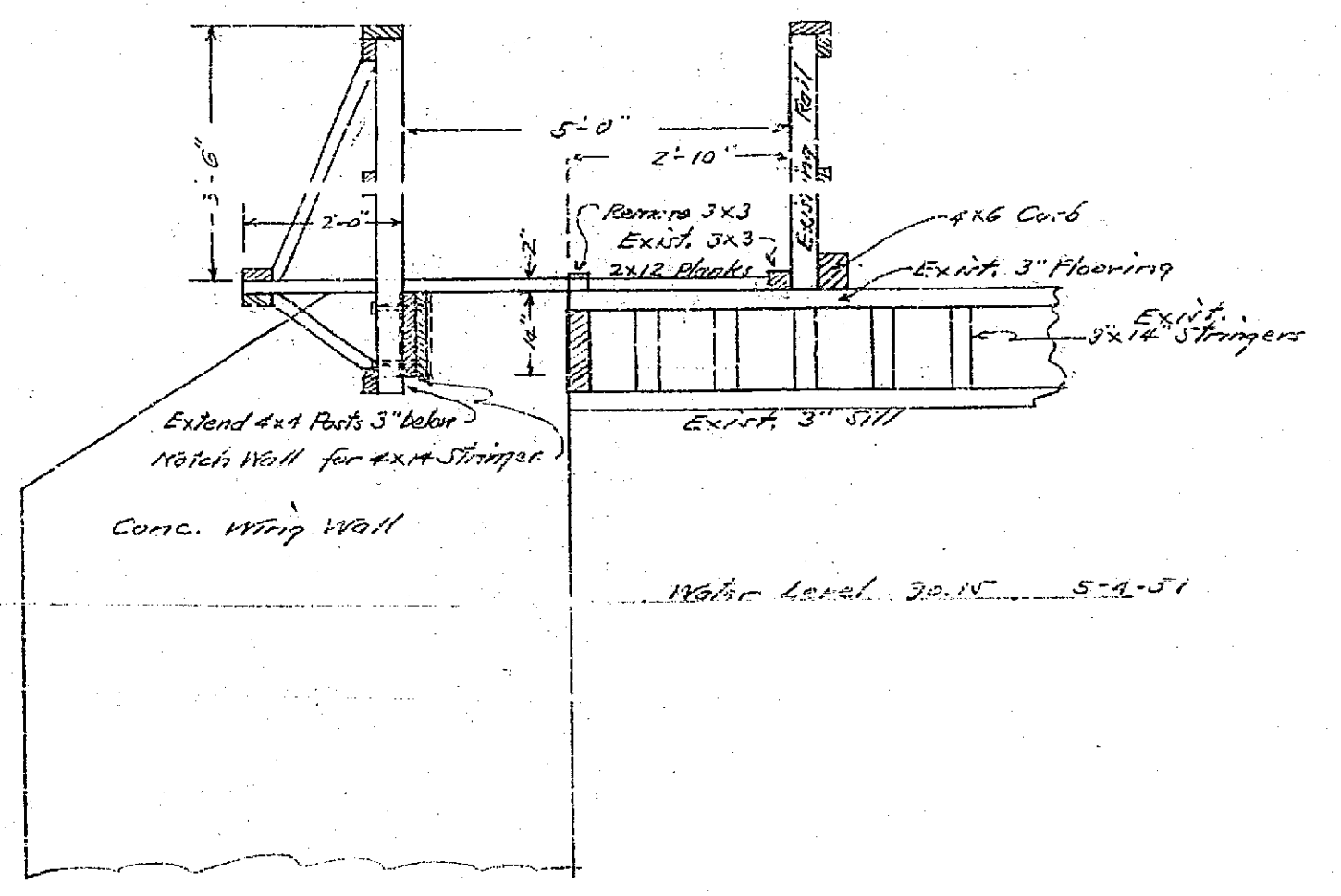


GENERAL LOCATION PLAN  
Scale: 1 in. = 10 ft.



PLAN  
Scale: 1 in. = 4 ft.



PART SECTION  
Scale: 1 in. = 2 ft.

PLAN N° 1033-M.  
PLAT SHOWING PROPOSED WIDENING OF  
FAIRMONT PARK BRIDGE

FOR FEDERAL HIGHWAY  
FB.505-5 MAY 1951

Approved: *M. H. Davine*  
116. C.E. 1911 CITY ENGINEER

- BILL OF MATERIAL
- 1-2x4x-24' Stringer
  - 10'-0" 2x12-7' Floor Beams for Post Bracing
  - 15'-0" 2x12-5' (2) " "
  - 25'-0" 2x4-4'-11" (2) Rail Posts
  - 48'-0" 2x4-24' (2) Rails
  - 12'-0" 2x4-24' (1) " Top
  - 8'-0" 2x10' Posts with nuts & washers for posts
  - 150# 16d spikes
  - 40'-0" 4x6 (1) Curb
  - 12'-0" 2x6 Bracing
  - 54'-0" 2x4 Joist
  - 16'-0" 2x12 Bracing

Cost Est.  
Lumber 75.00  
Hardware 15.00  
Labor 140.00  
\$ 230.00

1033M