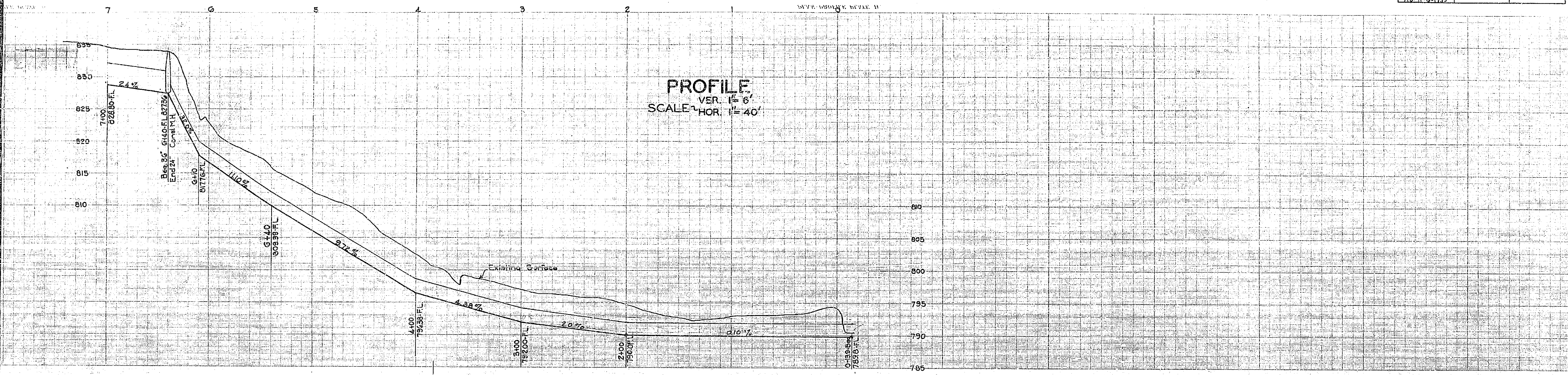
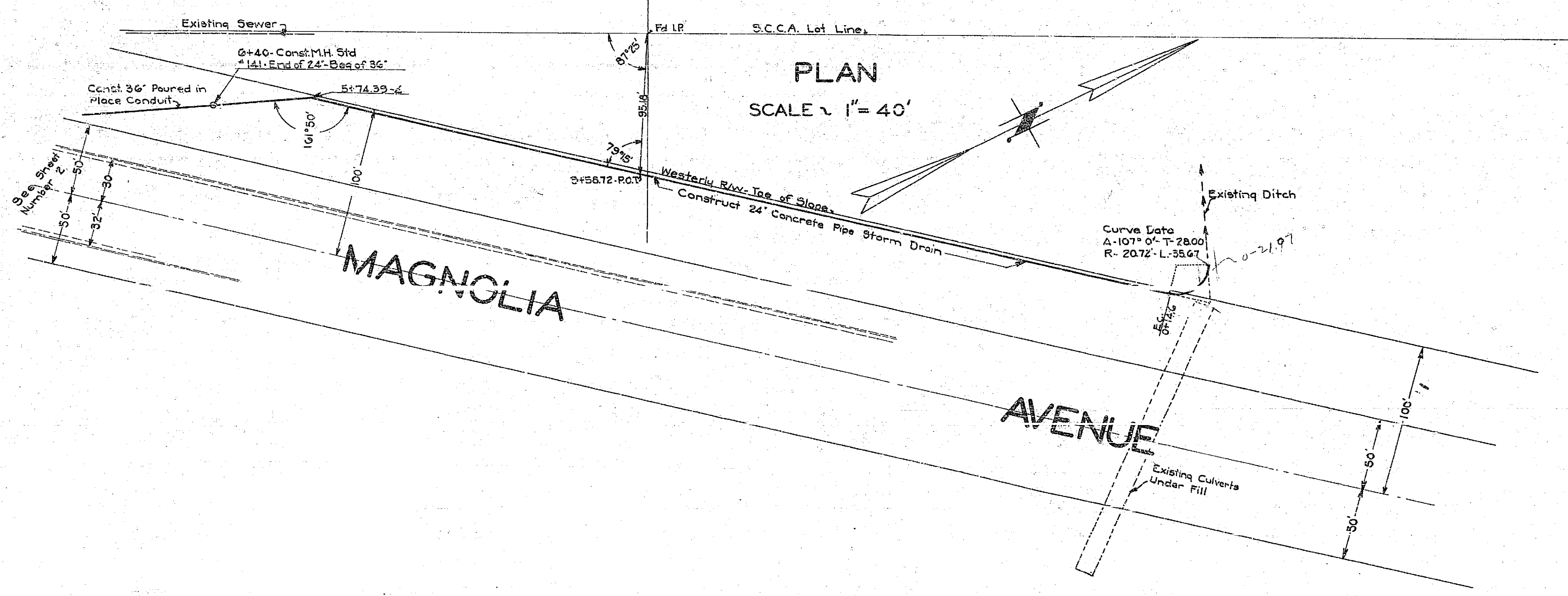


MAGNOLIA AVE. STORM DRAIN BANDINI TO TEQUESQUITE			
Drawing Number	Sheet Number	Field Sheets	Books
1035	1	3	359
Drawn	Checked	Approved	
Arthur N. Ridley			
April 9, 1939			



**PROFILE**  
 VER. 1" = 8'  
 SCALE HOR. 1" = 40'



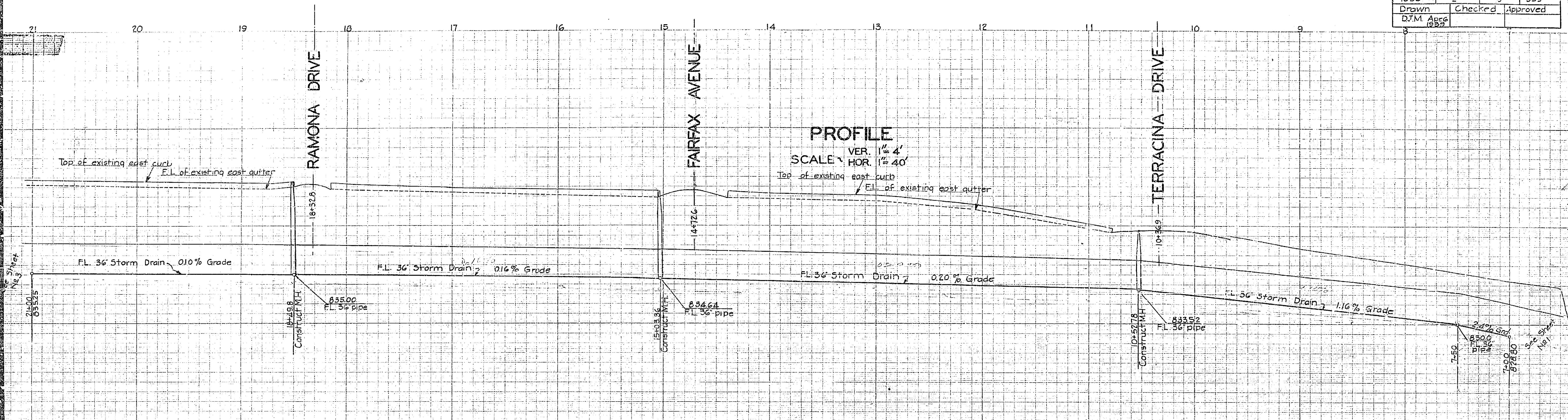
**PLAN**  
 SCALE 1" = 40'

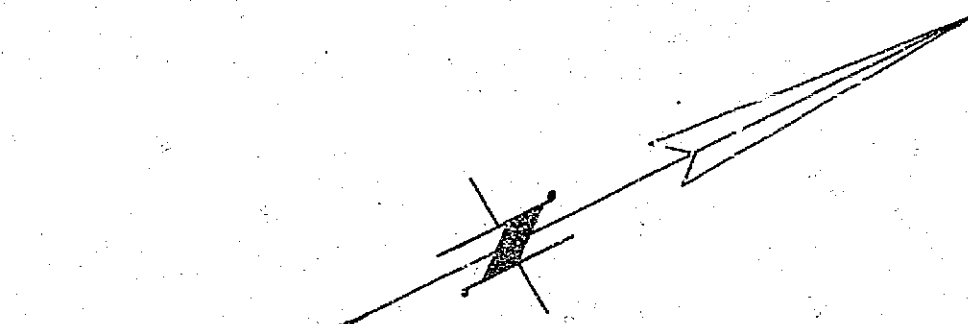
**PLAN AND PROFILE**  
 OF THE PROPOSED STORM DRAIN IN  
**MAGNOLIA AVENUE**  
 FROM THE  
**TEQUESQUITE ARROYO**  
 TO  
**BANDINI AVENUE**  
 BEING A PORTION OF  
 STATE HIGHWAY ROUTE NO. 43  
 ENGINEERING DEPT. CITY OF RIVERSIDE 1939

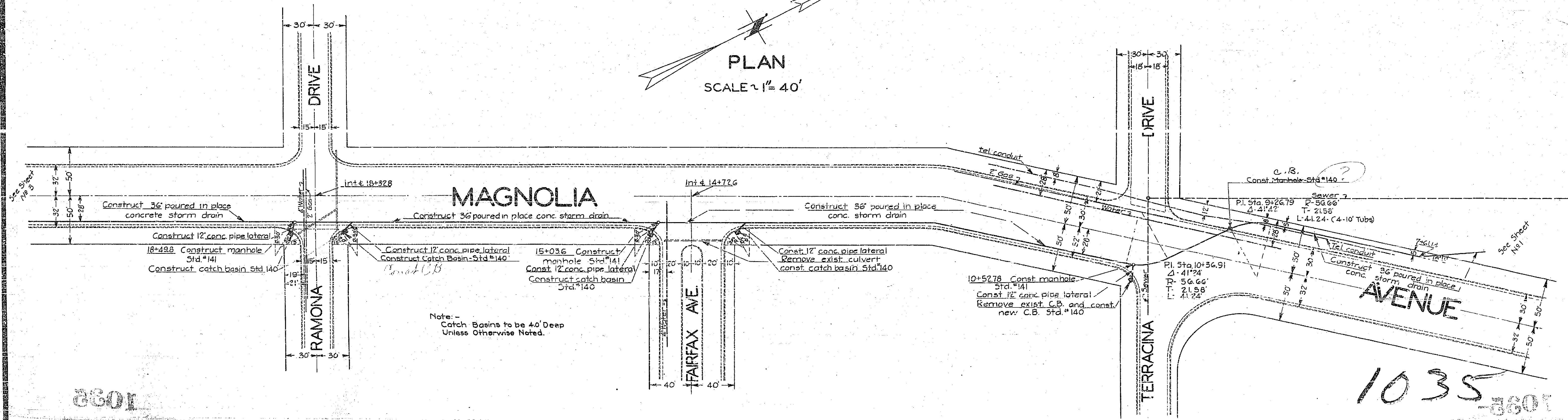
APPROVED \_\_\_\_\_  
 CITY ENGINEER

1035

MAGNOLIA AVE. STORM DRAIN BANDING TO TERRACINA AVE.			
Drawing Number	Sheet Number	Total Sheets	Field Books
1035	2	3	555
Drawn	Checked	Approved	
DJM	ASG		



  
**PLAN**  
 SCALE 1" = 40'



Note -  
Catch Basins to be 4.0' Deep  
Unless Otherwise Noted.

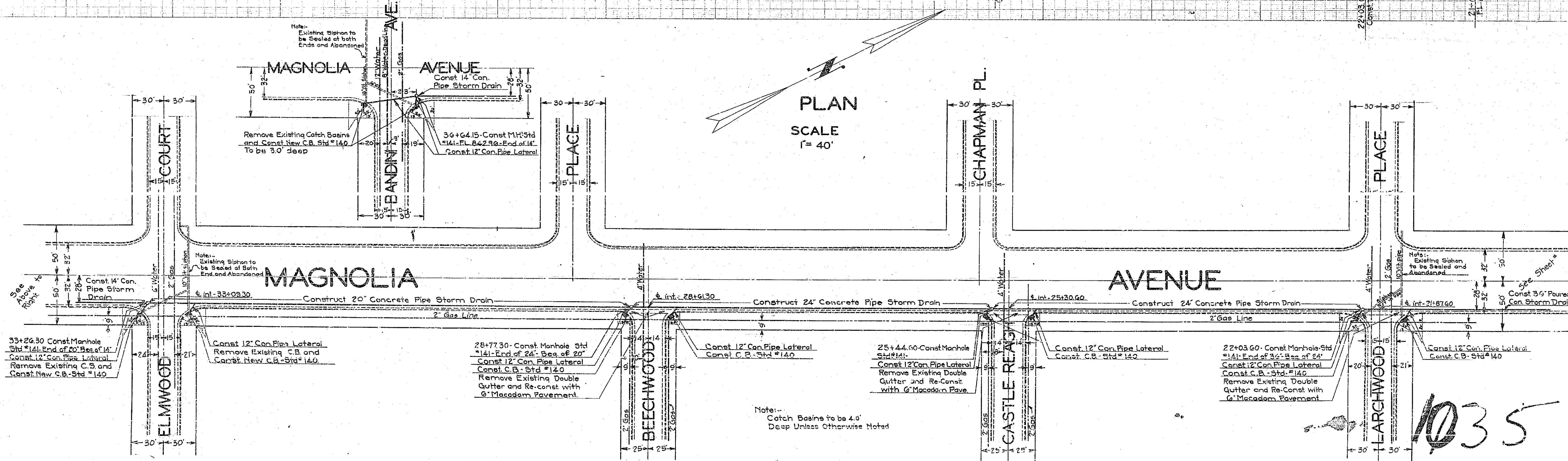
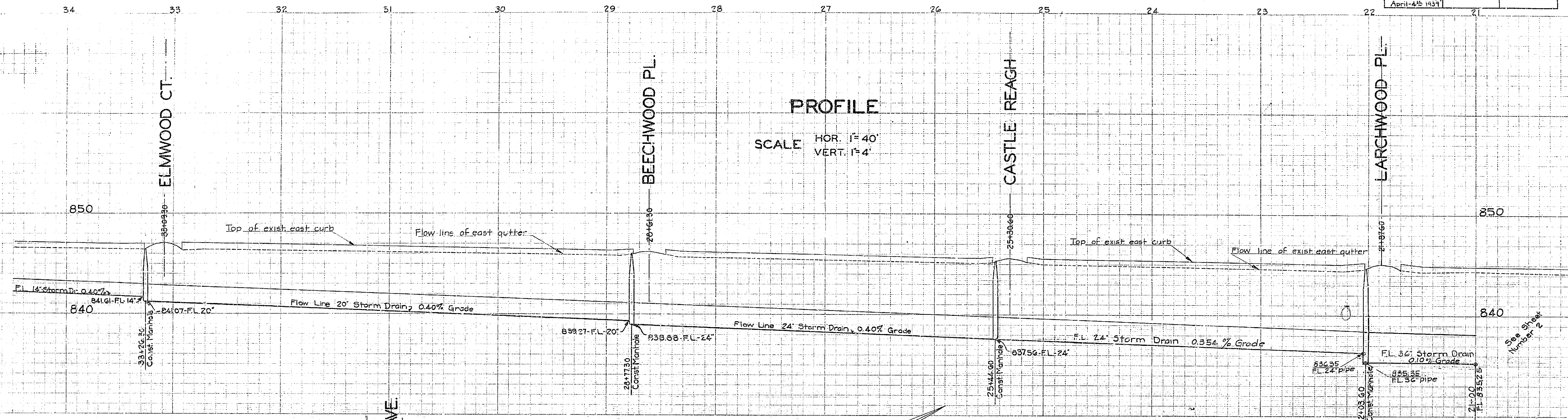
1035

039

1035

039

MAG AVE STORM DRAIN TO TOUCESQUITE			
Drawing Number	1035	Sheet Number	3
Drawn	Arthur N. Ridley	Checked	Approved
Date		April 23 1931	



Note:--  
Catch Basins to be 4.0'  
Deep Unless Otherwise Noted

1035

5301

5301