

Brockton Ave. - Jurupa Ave. to 14 St			
Drawing Number	Sheet Number	Total Sheets	Field Books
844	1	6	330-32
Drawn	Checked	Approved	
Arthur H. Riley		Oct. 28, 1937	

103

PLANS AND PROFILES

OF THE PROPOSED STREET IMPROVEMENT OF

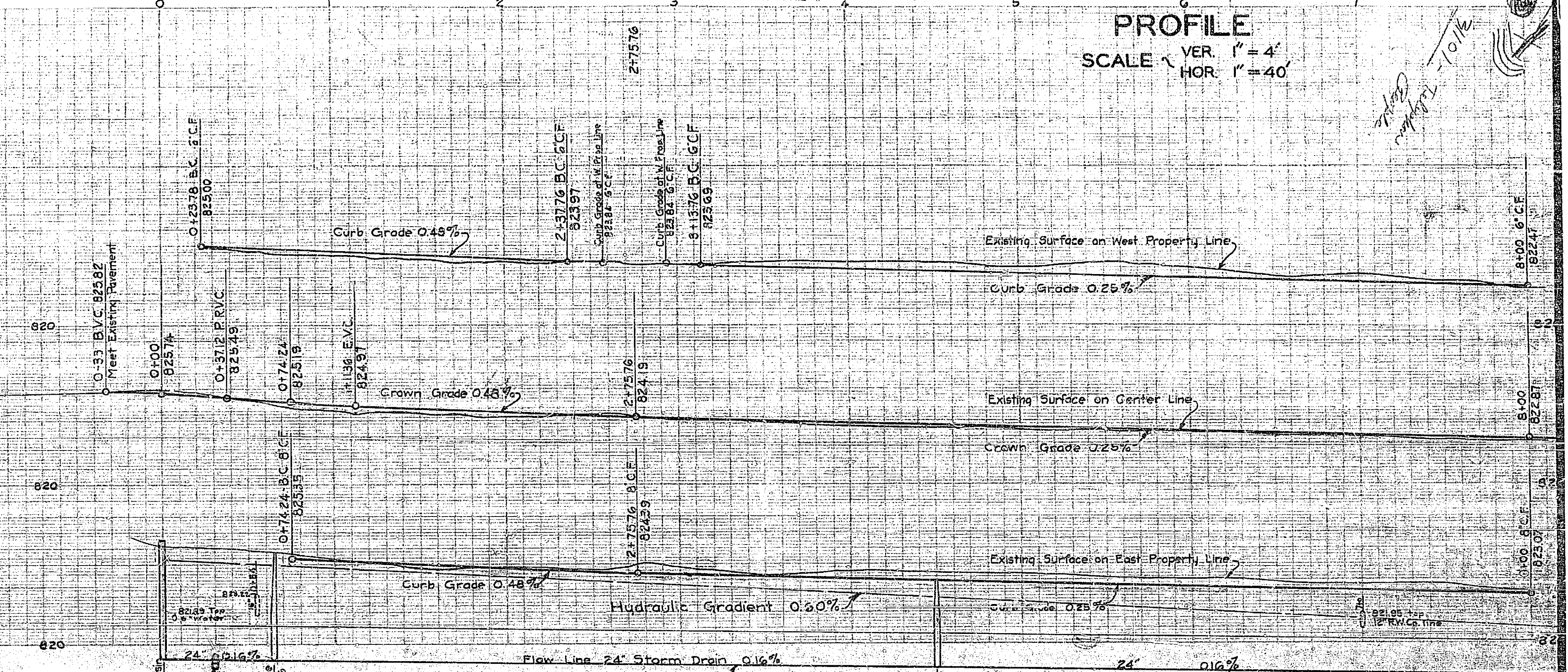
BROCKTON AVENUE

FROM
JURUPA AVENUE
 TO
FOURTEENTH STREET

ENGINEERING DEPT. CITY OF RIVERSIDE JAN. 1938

APPROVED *Arthur H. Riley*
 CITY ENGINEER

PROFILE
 SCALE VER. 1" = 4'
 HOR. 1" = 40'



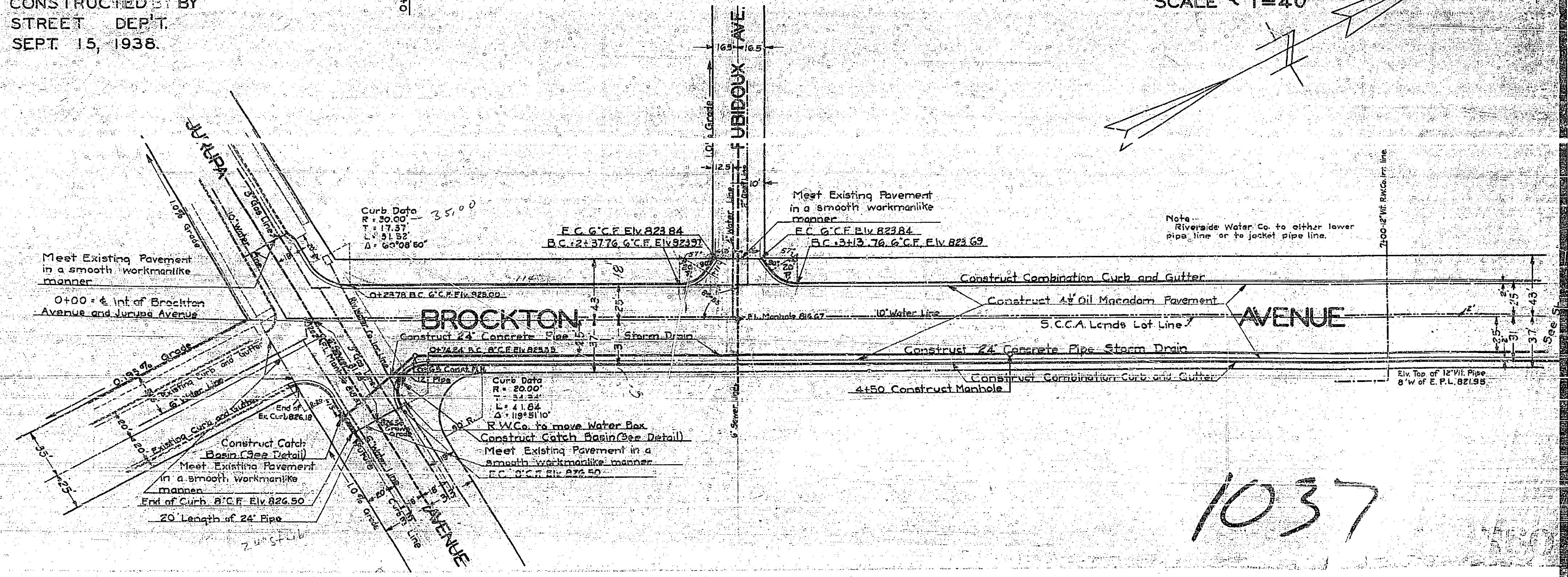
APPROVED AND ADOPTED BY THE MAYOR AND COUNCIL OF THE CITY OF RIVERSIDE THIS 8TH DAY OF FEBRUARY 1938.

Robert S. ...
 CITY CLERK

NOTE: THESE PLANS ARE TO REPLACE ANY PREVIOUS PLANS IN WHICH NO WORK WAS CONSTRUCTED.

CONSTRUCTED BY BY STREET DEPT. SEPT. 15, 1938.

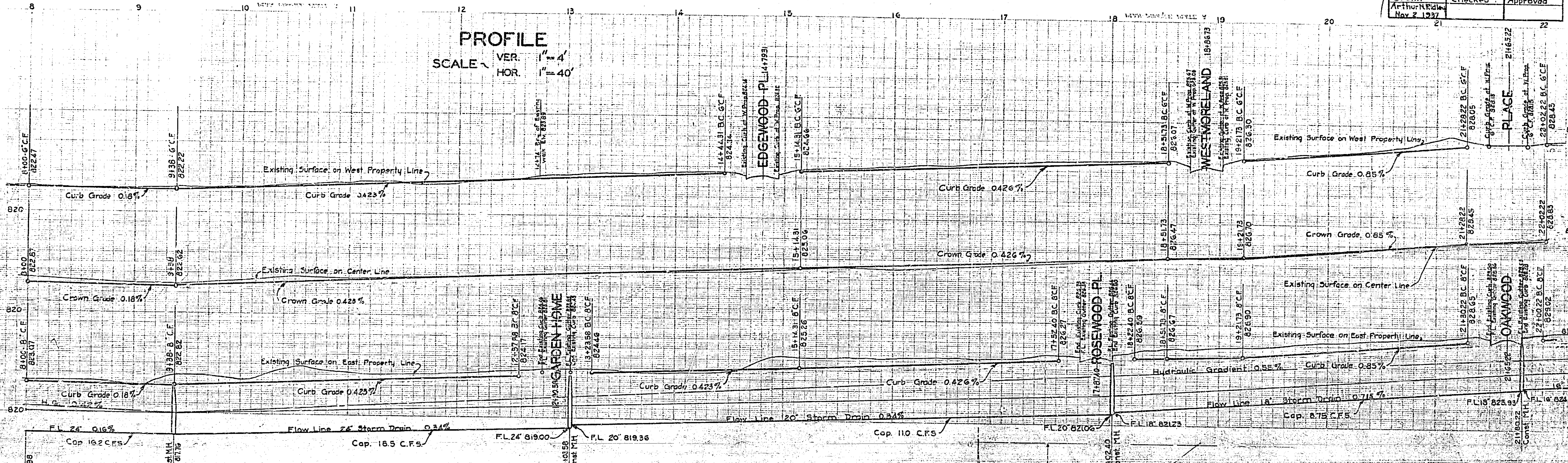
PLAN
 SCALE 1" = 40'



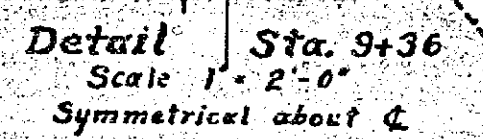
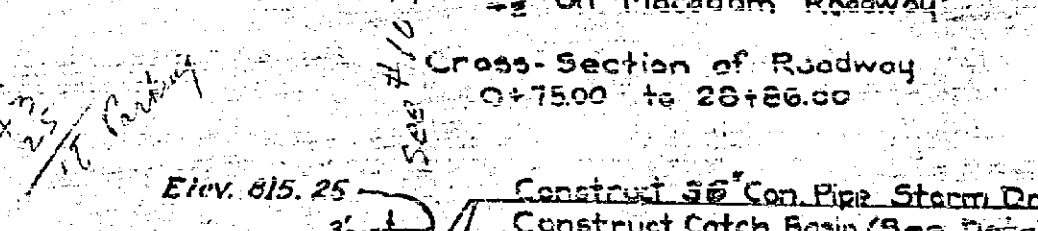
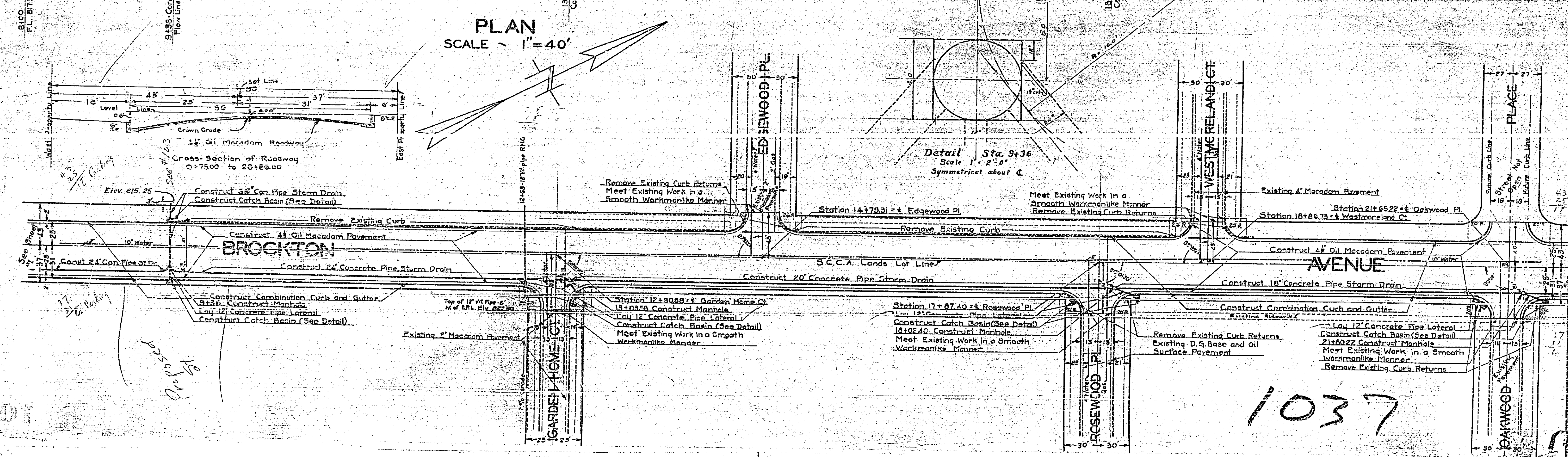
1037

Brockton Ave. Jurupa Ave. to 14 St			
Drawing Number	Sheet Number	Total Sheets	Field Book
0-04	2	6	330-932
Drawn	Checked	Approved	
Arthur R. R. 21st		Nov 2 1937	

PROFILE
 SCALE - VER. 1" = 4'
 HOR. 1" = 40'



PLAN
 SCALE - 1" = 40'

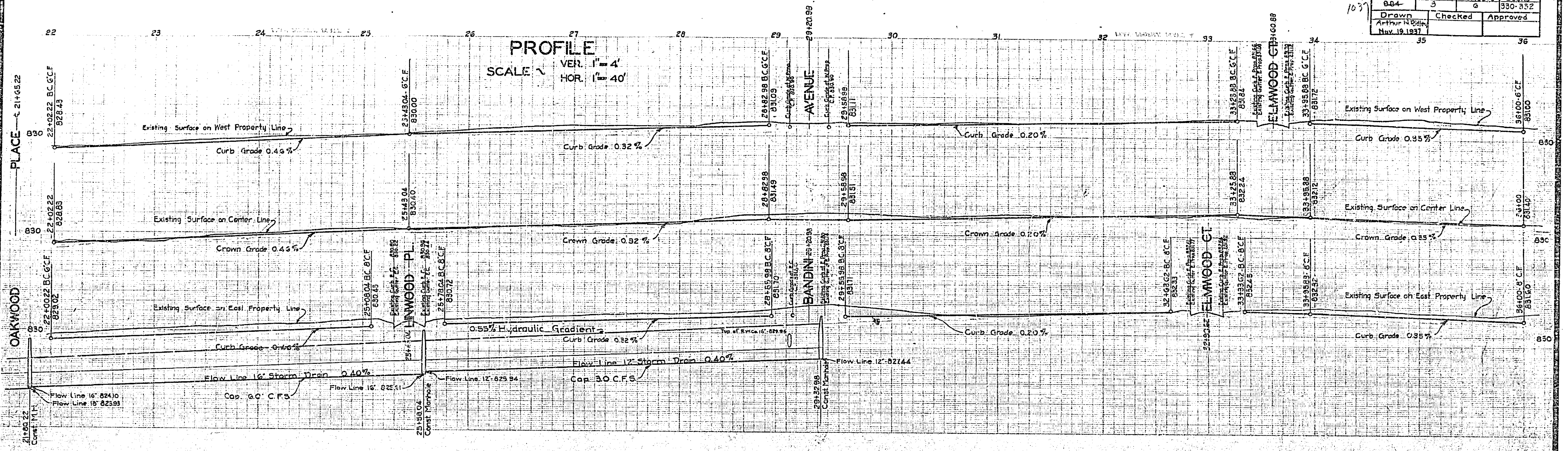


Proposed

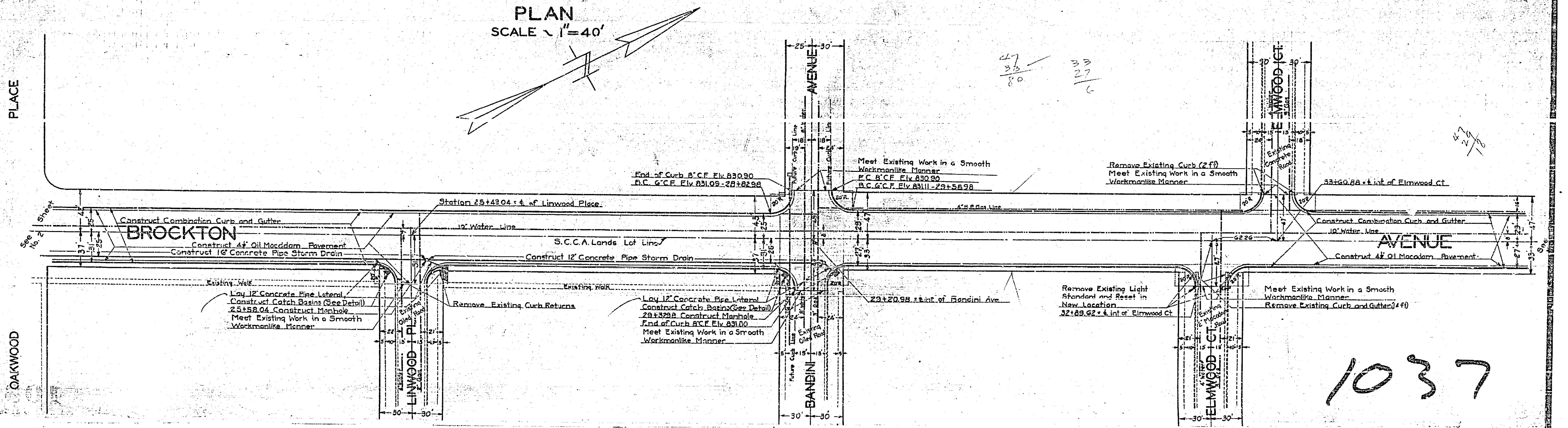
1037

Brockton Ave. Jurupa Ave. to 14th St.			
Drawing Number	Sheet Number	Total Sheets	Field Books
804	3	6	330-332
Drawn	Checked	Approved	
Arthur N. Smith			
Nov. 19, 1937			

PROFILE
 SCALE $\frac{1"}{40'}$
 VER. $\frac{1"}{4'}$
 HOR. $\frac{1"}{40'}$



PLAN
 SCALE $\frac{1"}{40'}$



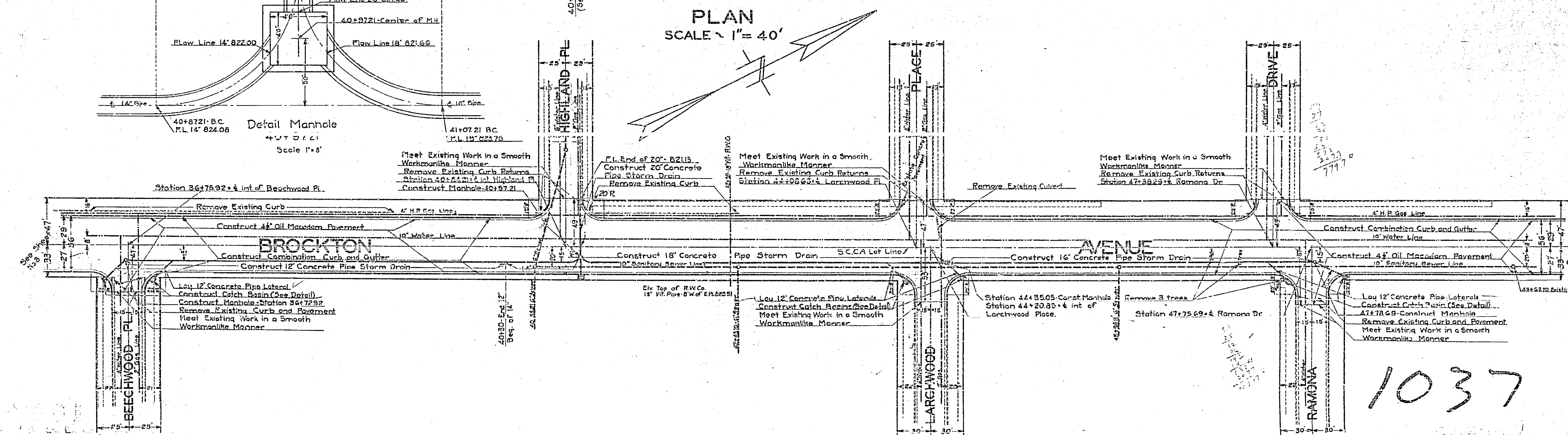
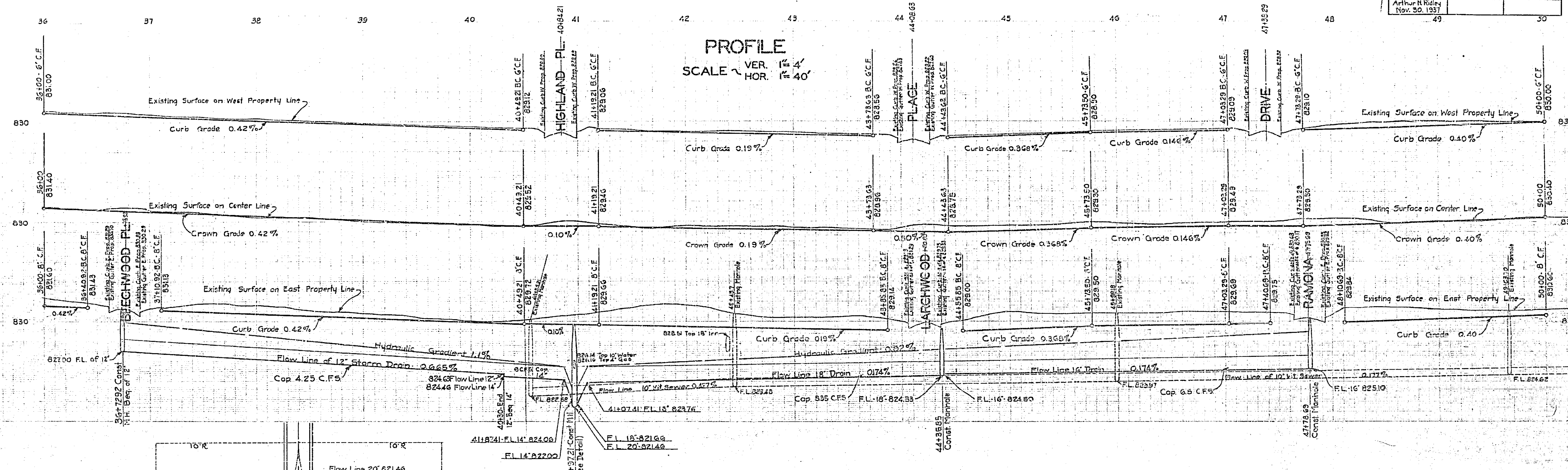
47
36
80

33
27
6

1037

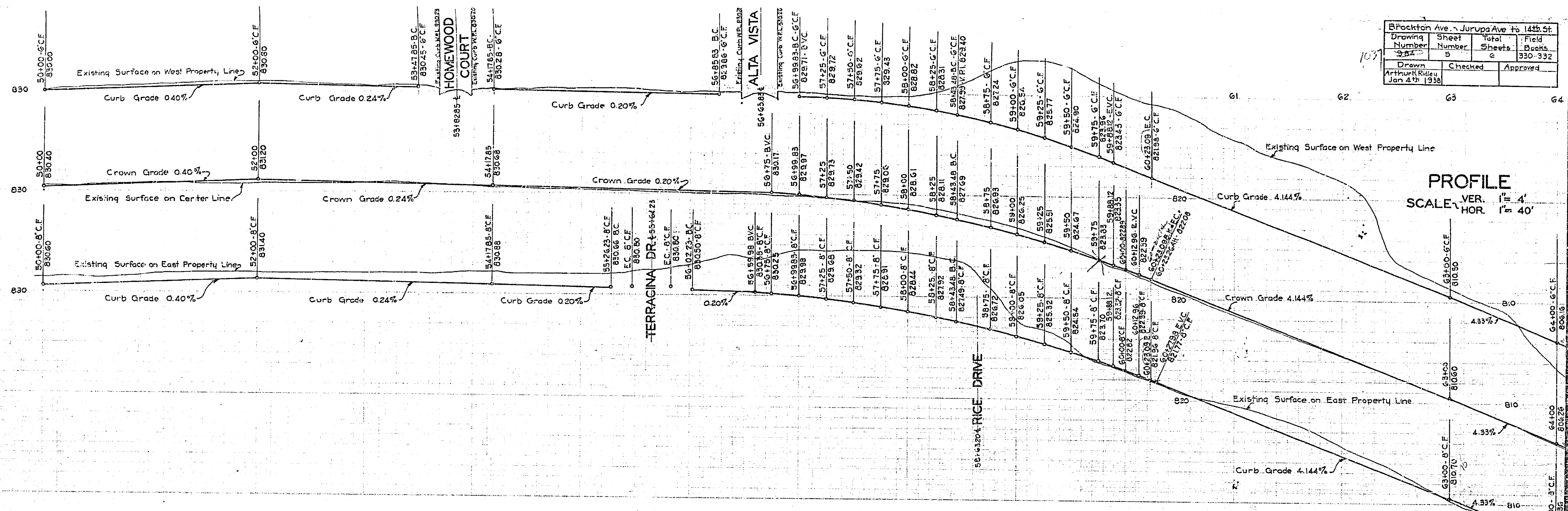
Brockton Ave \ Jurupa Ave to 14th St.			
Drawing Number	Sheet Number	Total Sheets	Field Books
987	4	6	330-332
Drawn		Checked	Approved
Arthur N. Rudy			
Nov. 30, 1937			

1037

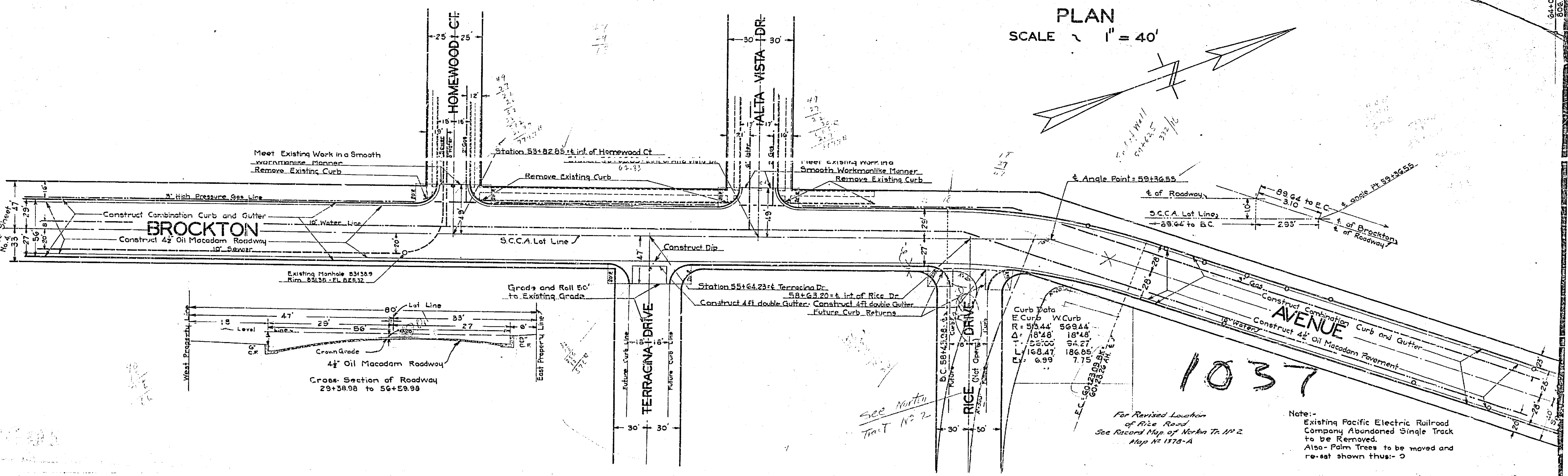


1037

Brockton Ave. Jurupa Ave. to 14th St.			
Drawing Number	Sheet Number	Total Sheets	Field Books
1037	5	6	330-332
Drawn	Checked	Approved	
Arthur R. Riley		Jan 4 1938	



PROFILE
 SCALE VER. 1" = 4'
 HOR. 1" = 40'



PLAN
 SCALE 1" = 40'

Curb Data

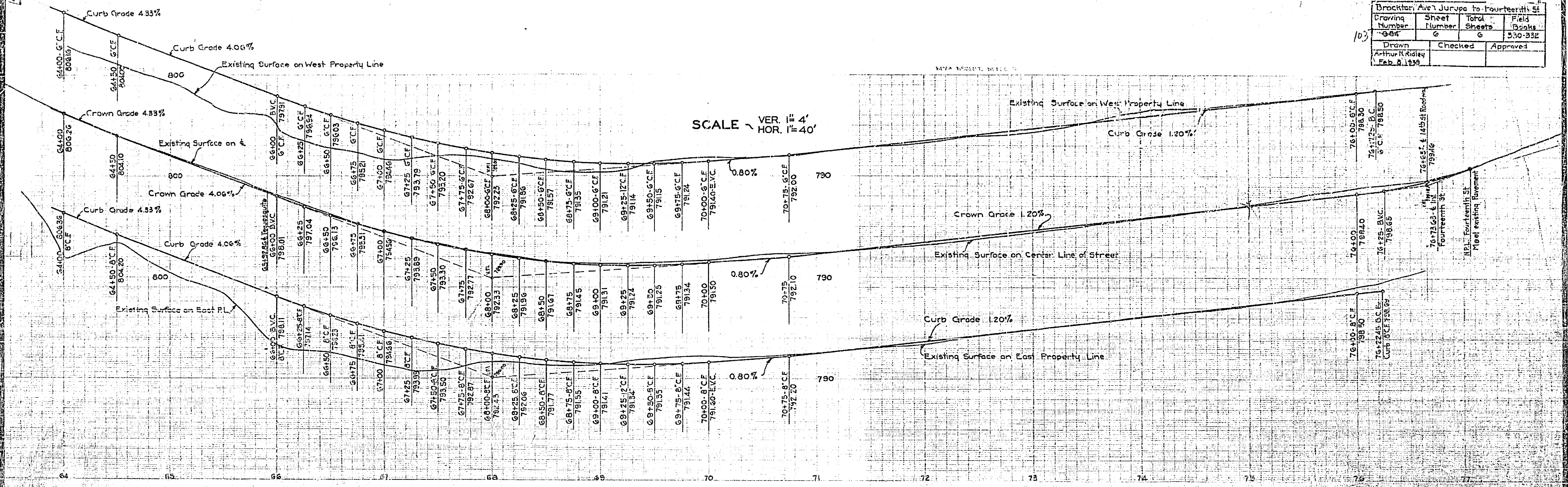
E. Curb	W. Curb
R = 53.44	50.844
Δ = 18°48'	18°48'
L = 35.00	34.27
E. L = 168.47	186.85
W. L = 6.99	7.75

1037

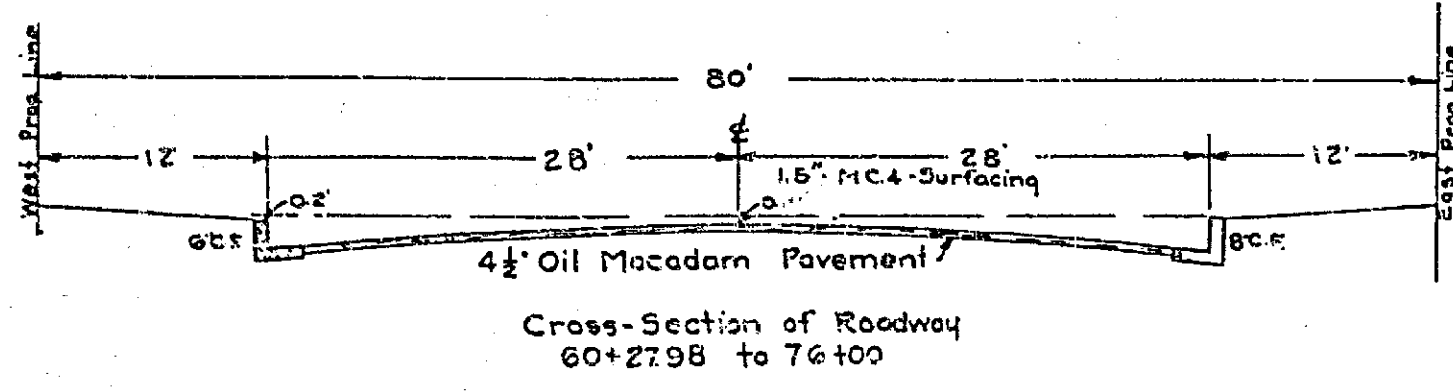
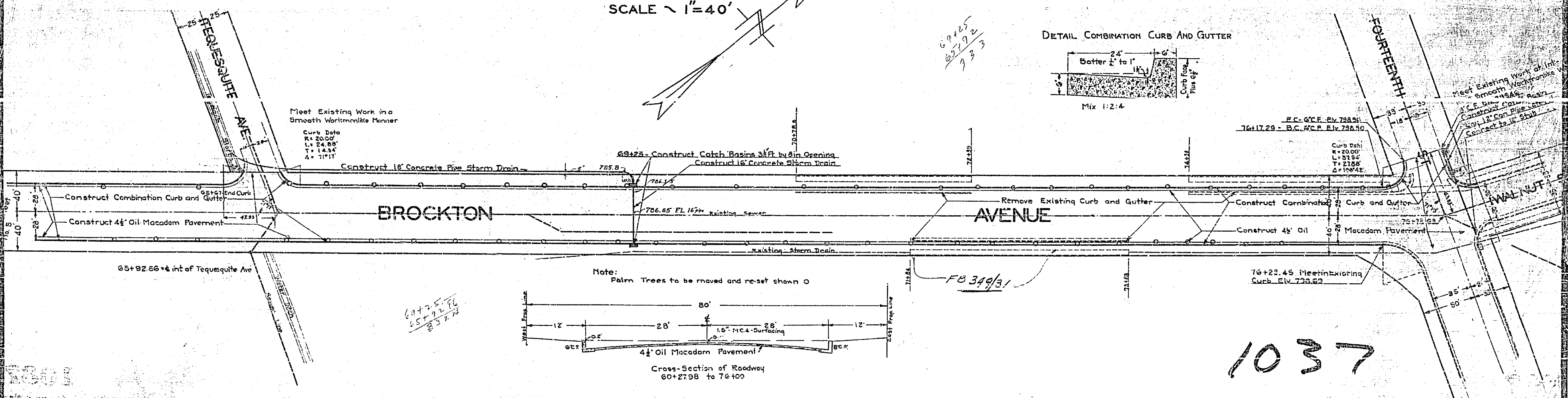
For Revised Location of Rice Road See Record Map of North Tr. N. 2 Map No. 1578-A

Note:-
 Existing Pacific Electric Railroad Company Abandoned Single Track to be Removed.
 Also Palm Trees to be moved and re-set shown thus: - O

Drocker Ave. Jurupa to Fourteenth St			
Drawing Number	Sheet Number	Total Sheets	Field Books
0-04	6	6	330-332
Drawn	Checked	Approved	
Arthur K. Ridley			
Feb. 8, 1938			



PLAN
SCALE ~ 1" = 40'



1037