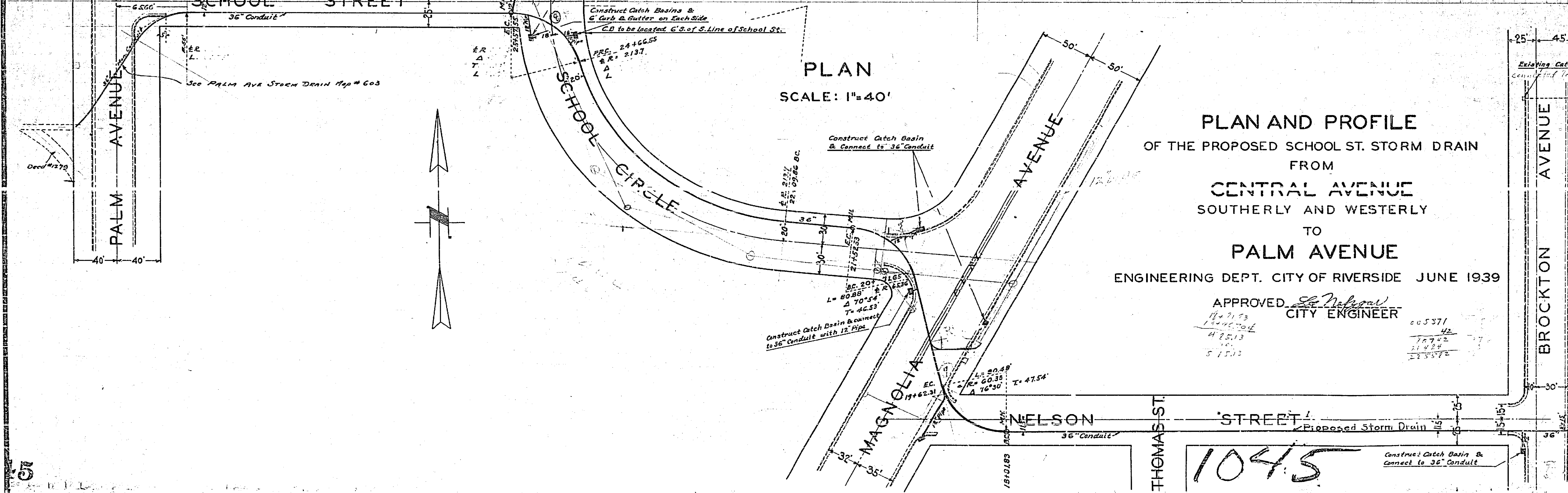
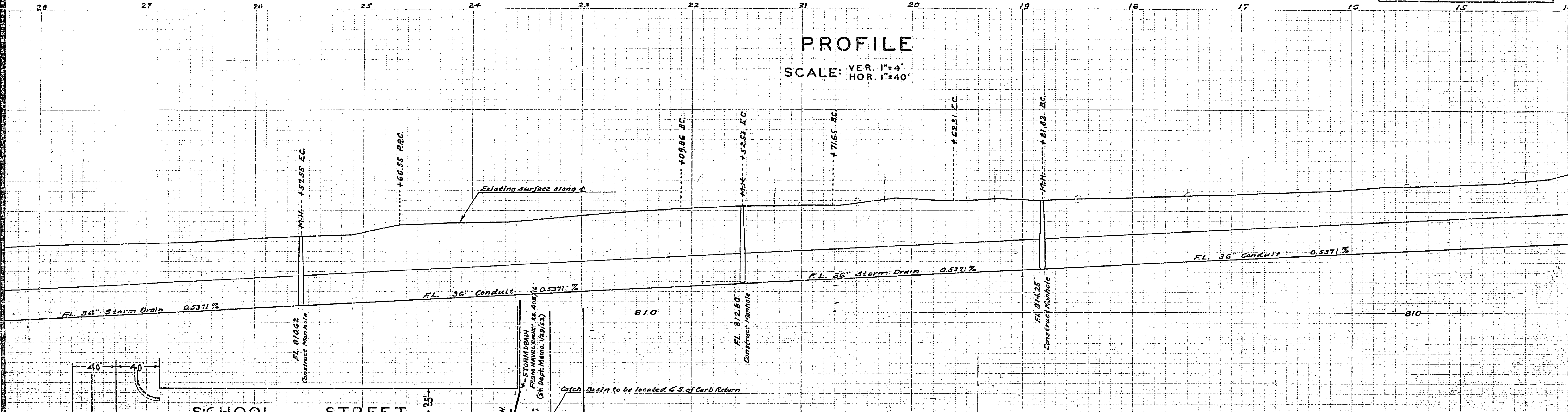


FOI

Drawing Number	Sheet Number	Total Sheet	Field Book
1045	1	2	346, 301
Drawn	Checked	Approved	



PLAN AND PROFILE
 OF THE PROPOSED SCHOOL ST. STORM DRAIN
 FROM
CENTRAL AVENUE
 SOUTHERLY AND WESTERLY
 TO
PALM AVENUE
 ENGINEERING DEPT. CITY OF RIVERSIDE JUNE 1939

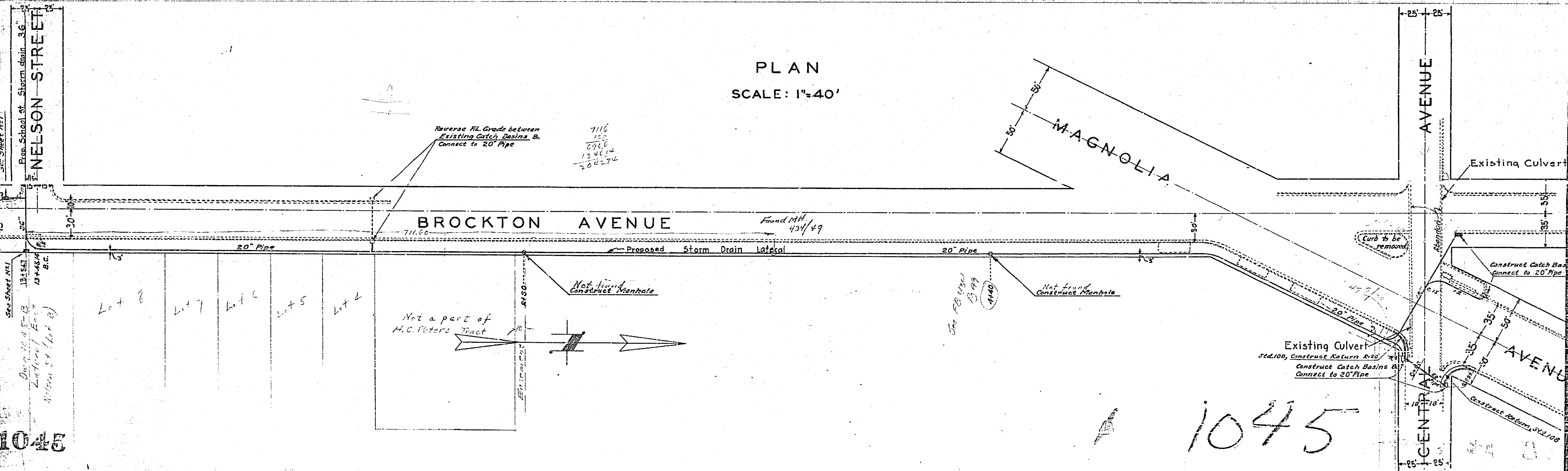
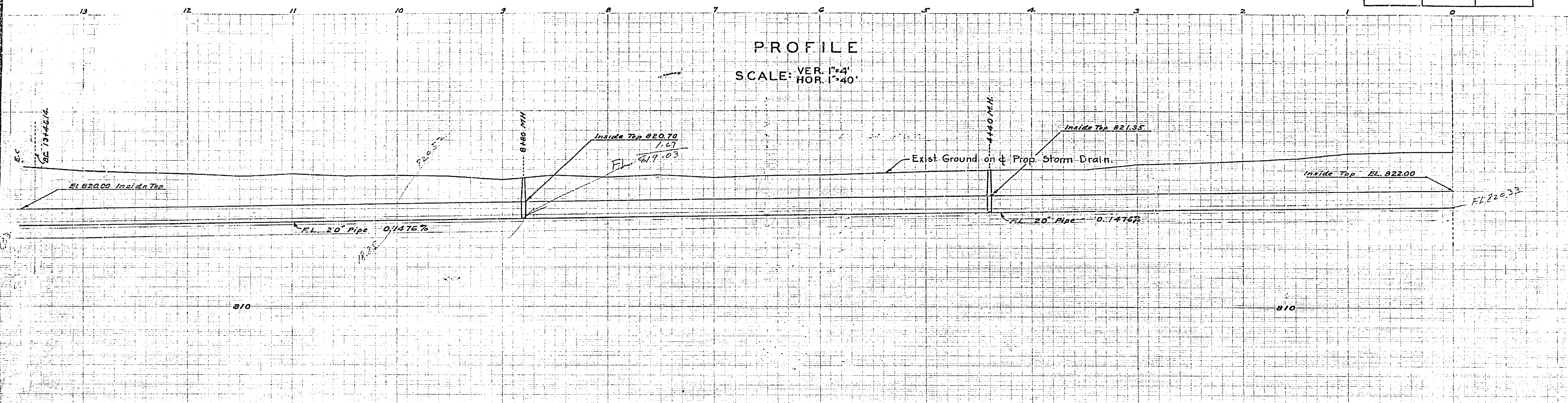
APPROVED: *Ed Nelson*
 CITY ENGINEER

1045

PROPOSED STORM DRAIN 20\"/>

1045

School Street Storm Drain			
Drawing Number	Sheet Number	Total Sheet	Field Book
1045	2	2	348, 366
Drawn	Checked	Approved	



1045