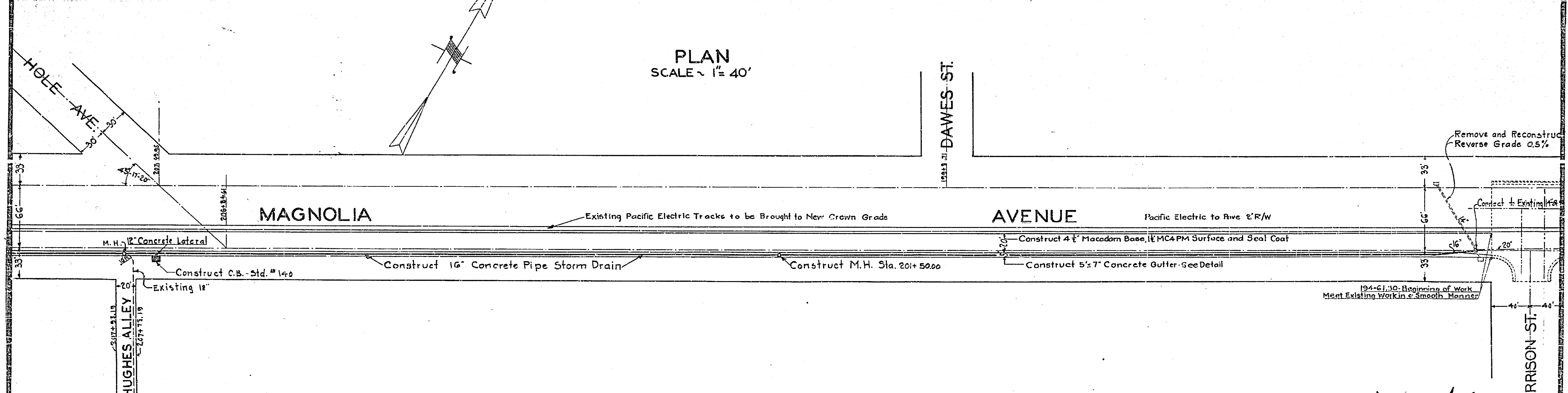
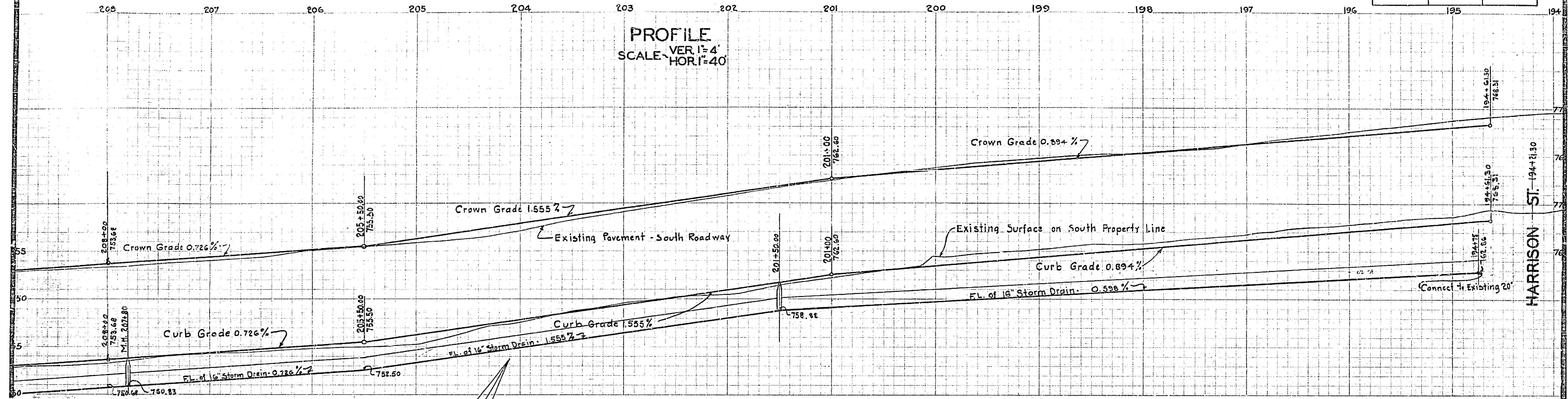


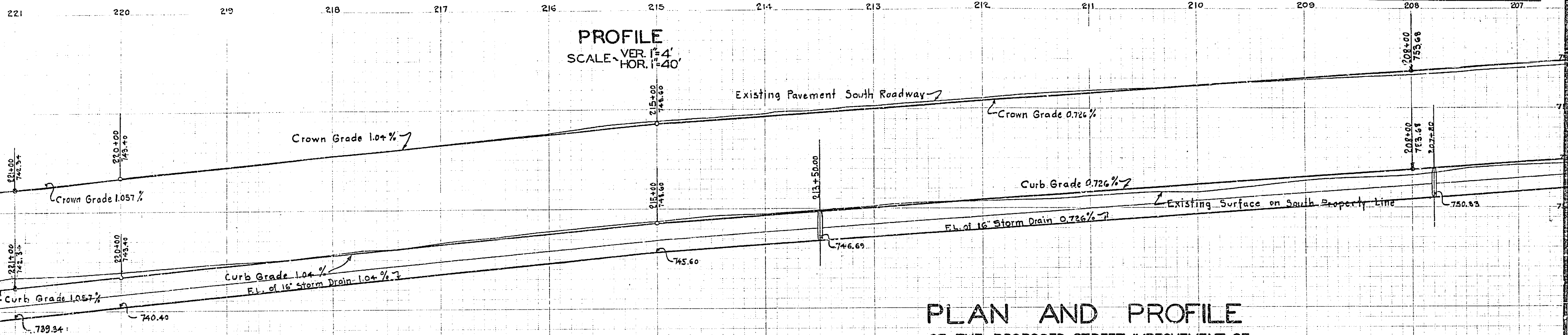
Magnolia Ave-Harrison St to W City limits			
Drawing Number	Sheet Number	Total Sheets	Field Books
1046	3	232	232-245
Drawn	Checked	Approved	



194-61.10: Retaining of Work Meet Existing Work in a Smooth Manner

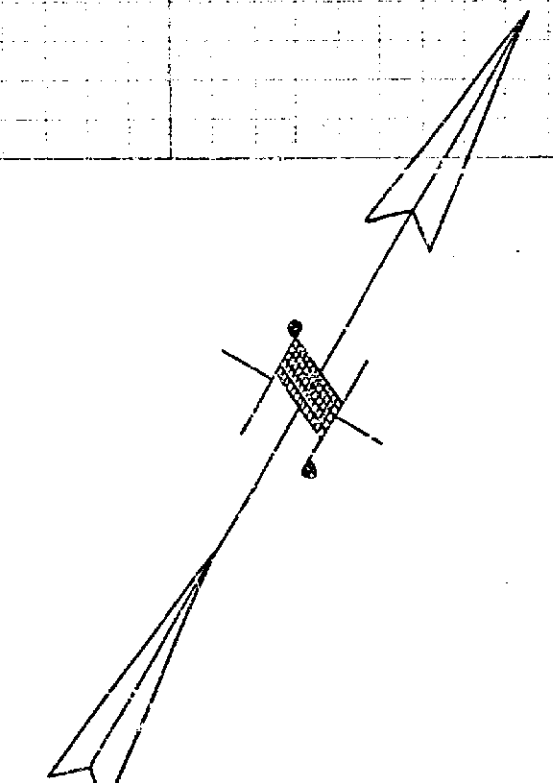
1046

Magnolia Ave. Harrison St. to W. City Limits			
Drawing Number	Sheet Number	Total Sheets	Field Books
1046	2	3	832-759-20 834-8716
Drawn	Checked	Approved	

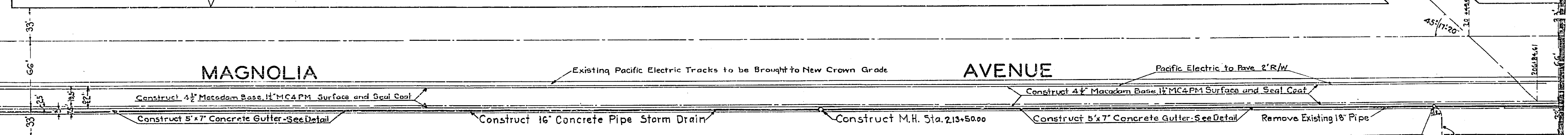


PLAN AND PROFILE
OF THE PROPOSED STREET IMPROVEMENT OF
MAGNOLIA AVENUE
FROM
HARRISON STREET
TO
WEST CITY LIMITS

BEING A PORTION OF
STATE HIGHWAY- ROUTE NO. 43
ENGINEERING DEPT. JUNE 1939
APPROVED *E. J. Ruffner*
CITY ENGINEER



PLAN
SCALE - 1" = 40'

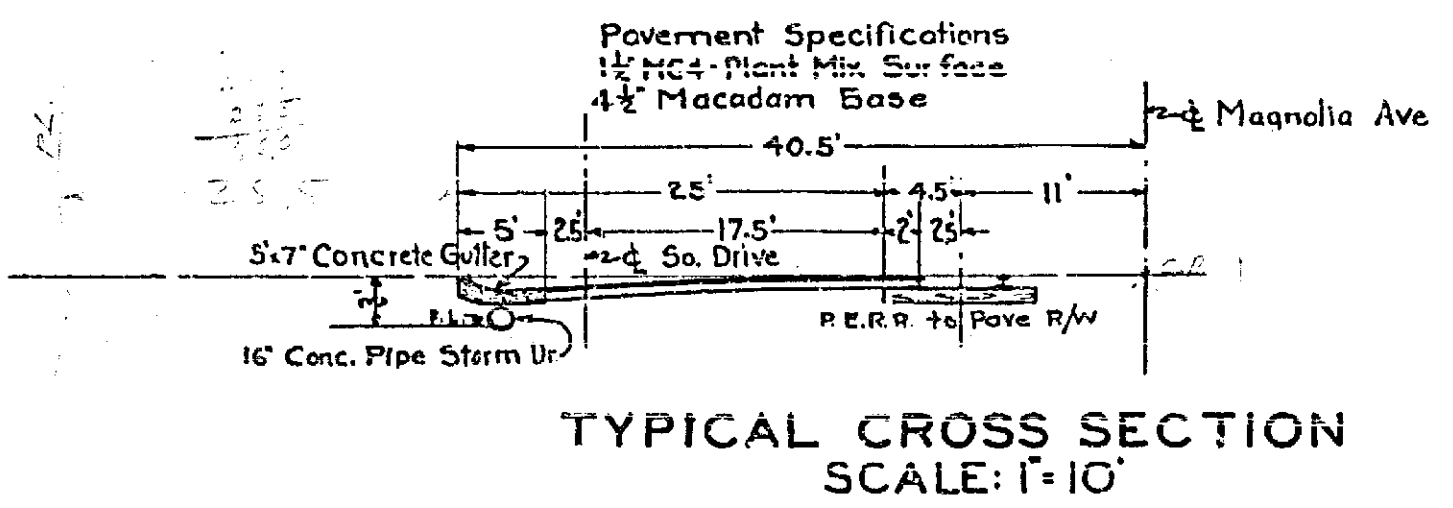
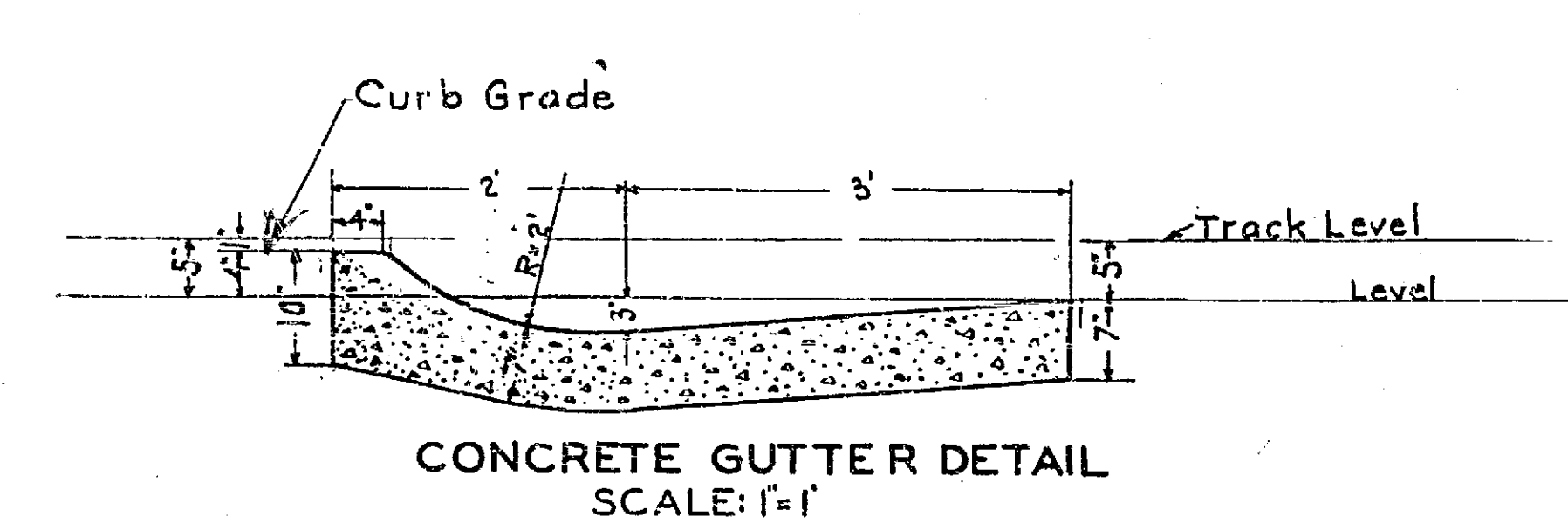
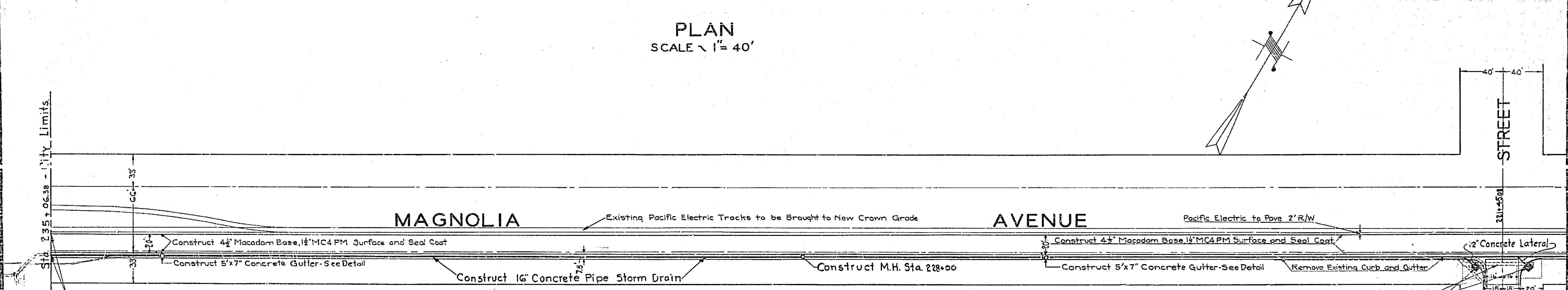
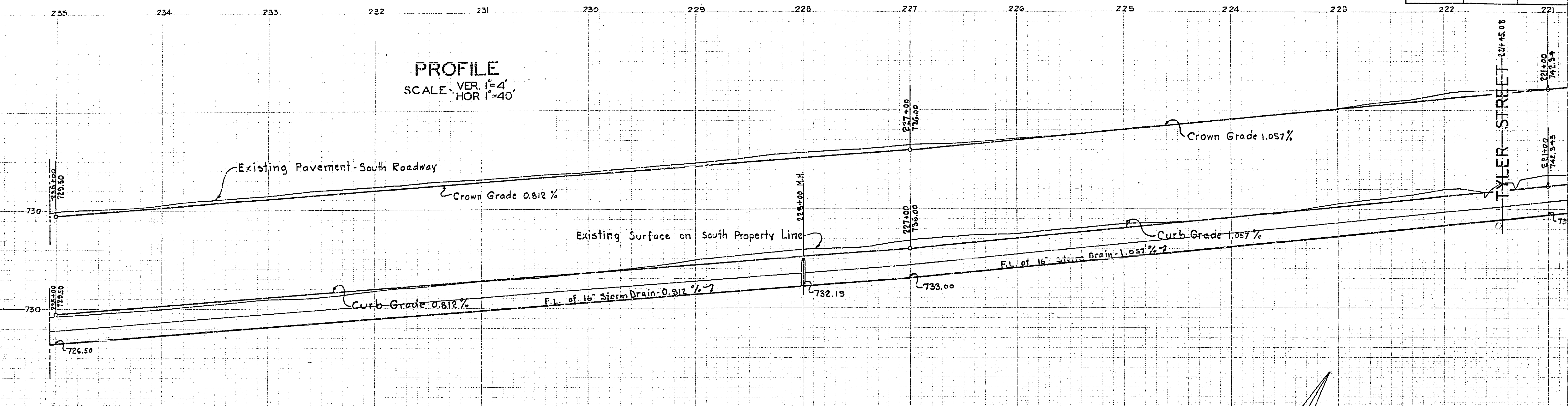


APPROVED AND ADOPTED BY THE MAYOR
AND COUNCIL OF THE CITY OF RIVERSIDE
THIS 11th DAY OF JULY 1939
[Signature]
CITY CLERK

1046

HUGHES ALLEY

Magnolia Ave. Harrison St. to W. City Lim.			
Drawing Number	Sheet Number	Total Sheets	Field Books
1046	3	3	227-230 244-247
Drawn	Checked	Approved	



1046