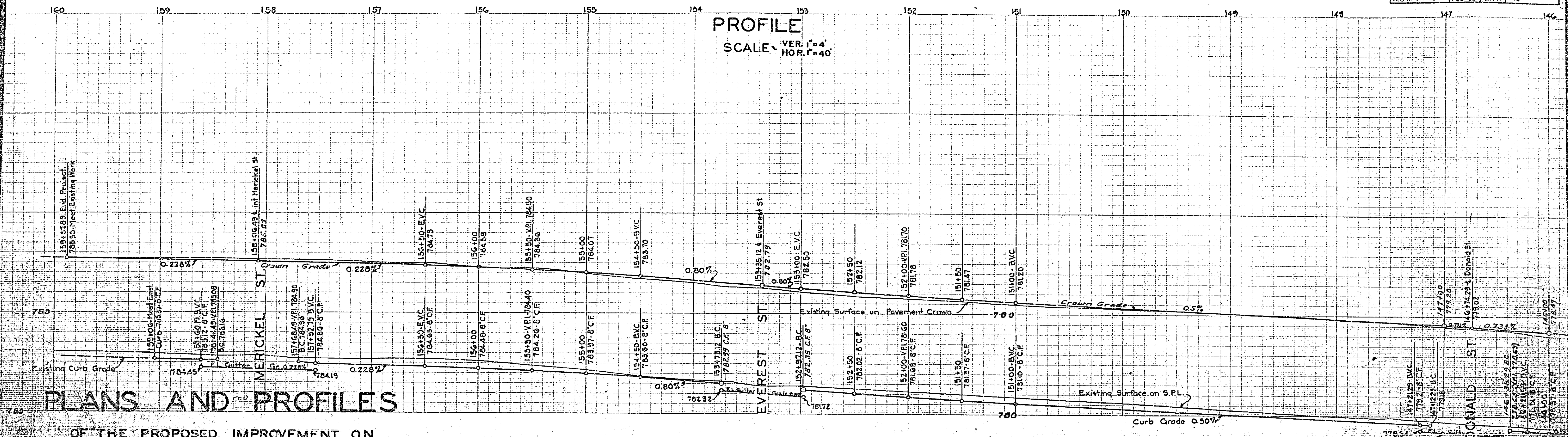


MAGNOLIA AVENUE			
Drawing Number	Sheet Number	Total Sheets	Total Books
1051	1	6	240, 241
Drawn	Checked	Approved	
W.P.M. 1/3/40	Arthur H. Riley	February 6, 1940	



PLANS AND PROFILES

OF THE PROPOSED IMPROVEMENT ON

MAGNOLIA AVE.

CASTLEMAN ST. TO ADAMS ST.

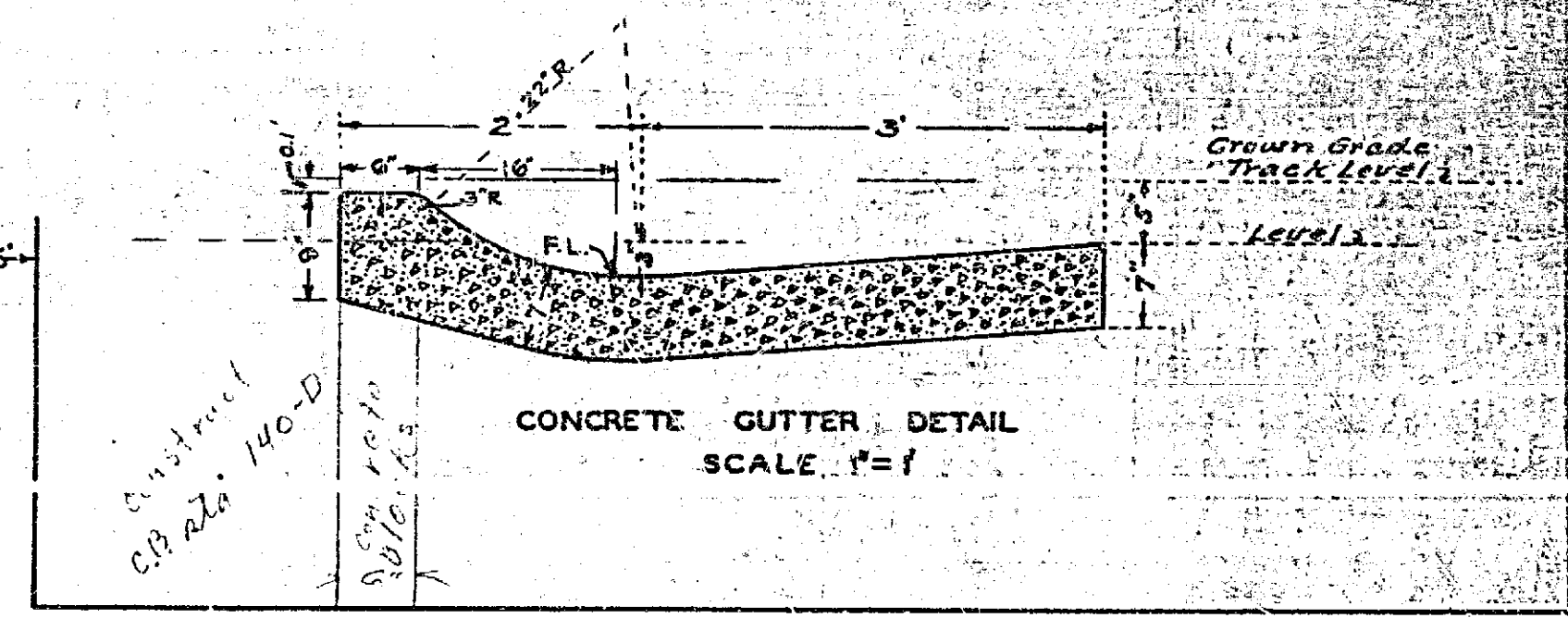
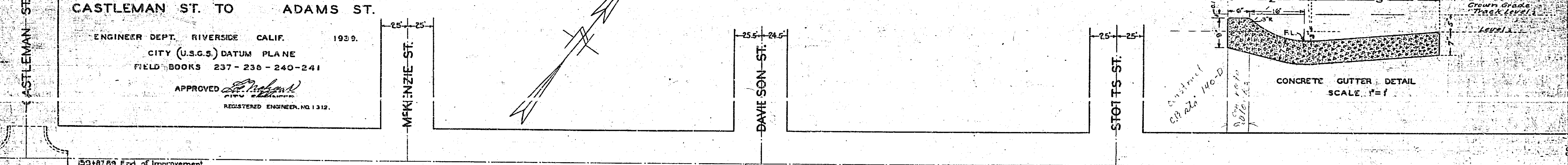
ENGINEER DEPT. RIVERSIDE CALIF. 1939.

CITY (U.S.G.S.) DATUM PLANE
FIELD BOOKS 237 - 238 - 240 - 241

APPROVED *[Signature]*
REGISTERED ENGINEER, NO. 1312.

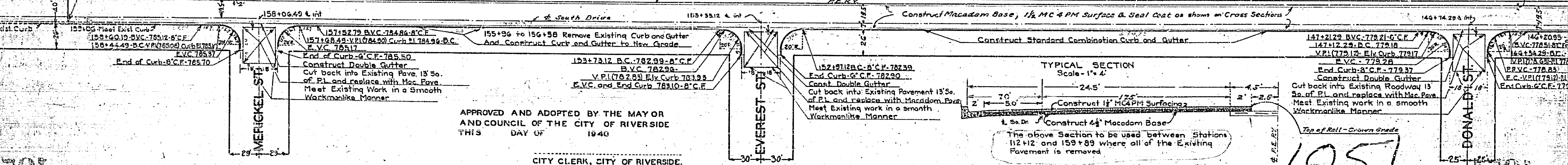
PLAN

SCALE 1" = 40'



MAGNOLIA

AVENUE



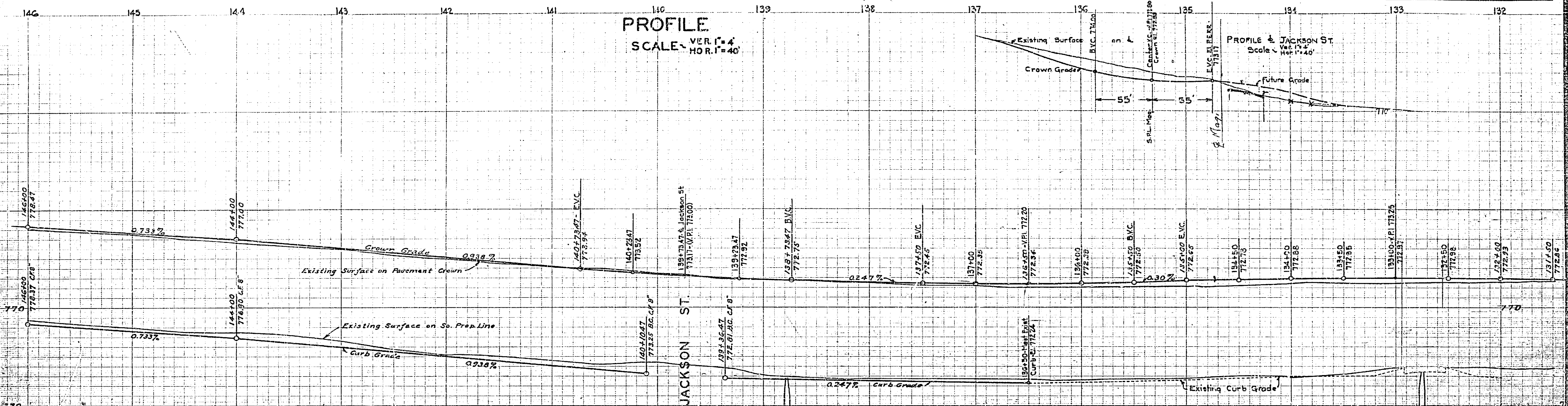
APPROVED AND ADOPTED BY THE MAYOR
AND COUNCIL OF THE CITY OF RIVERSIDE
THIS DAY OF 1940

CITY CLERK, CITY OF RIVERSIDE.

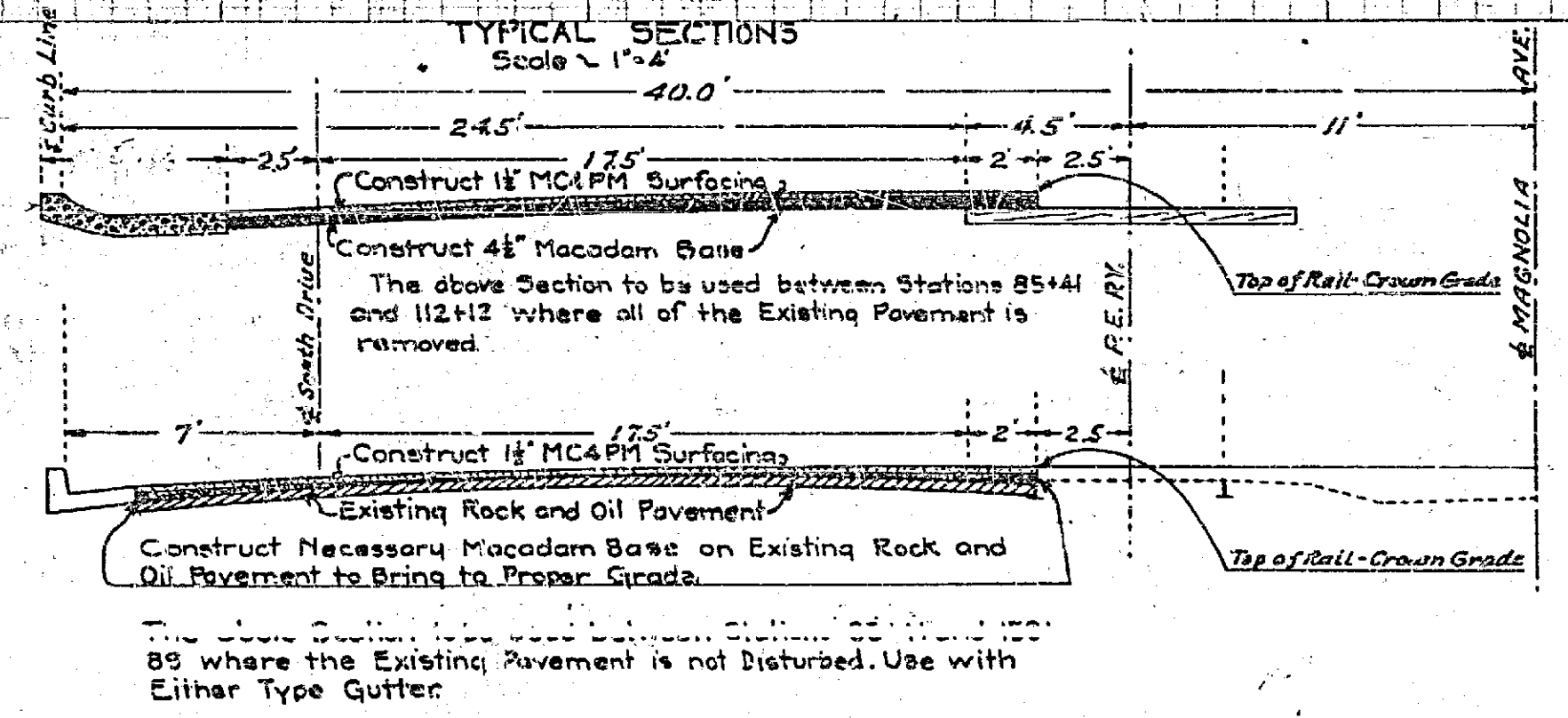
1051

MAGNOLIA AVENUE			
CASTLEMAN ST. TO ADAMS ST.			
Drawing Number	Sheet Number	Total Sheets	Field Books
1051	2	6	240
Drawn	Checked	Approved	
	Arthur N. Ridley	February 6, 1940	

PROFILE
SCALE: VER. 1"=4'
HOR. 1"=40'

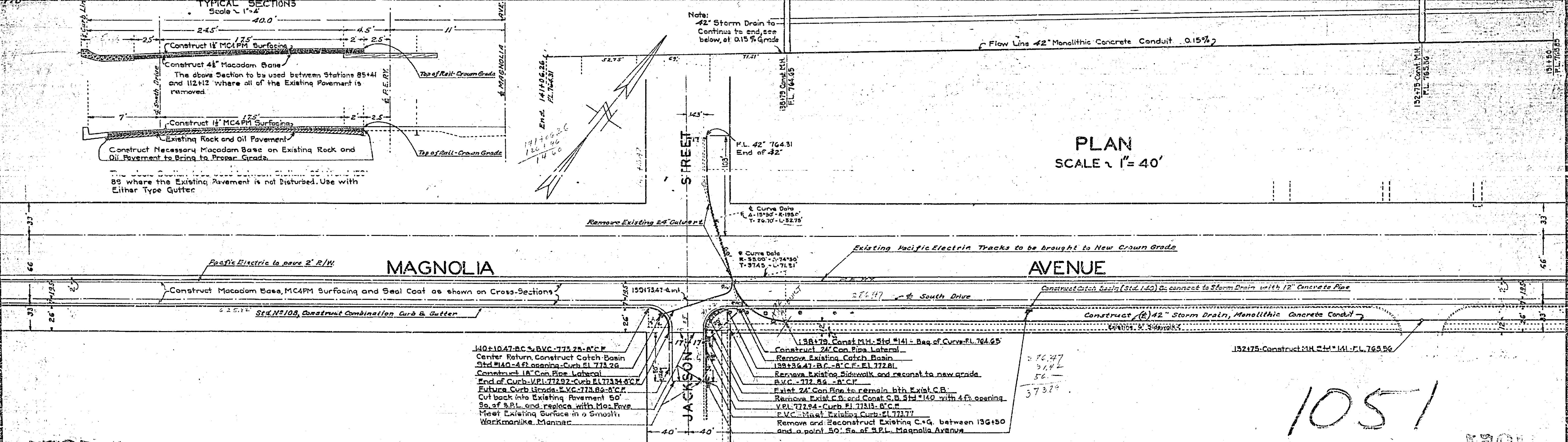


PROFILE & JACKSON ST.
Scale: Ver. 1"=4'
Hor. 1"=40'



Note:
42" Storm Drain to
Continue to end, see
below, at 0.15% Grade

PLAN
SCALE 1"=40'



- 140+10.47-B.C. - BVC - 773.25 - A.C.P.
- Center Return, Construct Catch Basin
- Std #140 - 4 ft opening - Curb El. 773.28
- Construct 1A" Con. Pipe Lateral
- End of Curb - V.P.L. 772.92 - Curb El. 773.34 - B.C.P.
- Future Curb Grade: S.V.C. - 773.89 - B.C.P.
- Cut back into Existing Pavement 50'
- So. of S.P.L. and replace with Mac. Base
- Reconst. Existing Surface in a Smooth
- Workmanlike Manner
- 138+79 Const. M.H. Std. #141 - Bag of Curve - Fl. 764.65
- Construct 24" Con. Pipe Lateral
- Remove Existing Catch Basin
- 138+36.47 - B.C. - A.C.P. - El. 772.81
- Remove Existing Sidewalk and reconst. to new grade.
- B.V.C. - 772.86 - A.C.P.
- Plant 24" Con. Pipe to remain with Exist. C.B.
- Remove Exist. C.B. and Const. S.B. Std. #140 with 4 ft opening.
- V.P.L. 772.94 - Curb El. 773.13 - B.C.P.
- E.V.C. - 772.94 - Curb El. 773.13
- Remove and Reconstruct Existing C.G. between 136+50 and a point 50' So. of S.P.L. Magnolia Avenue.

1051

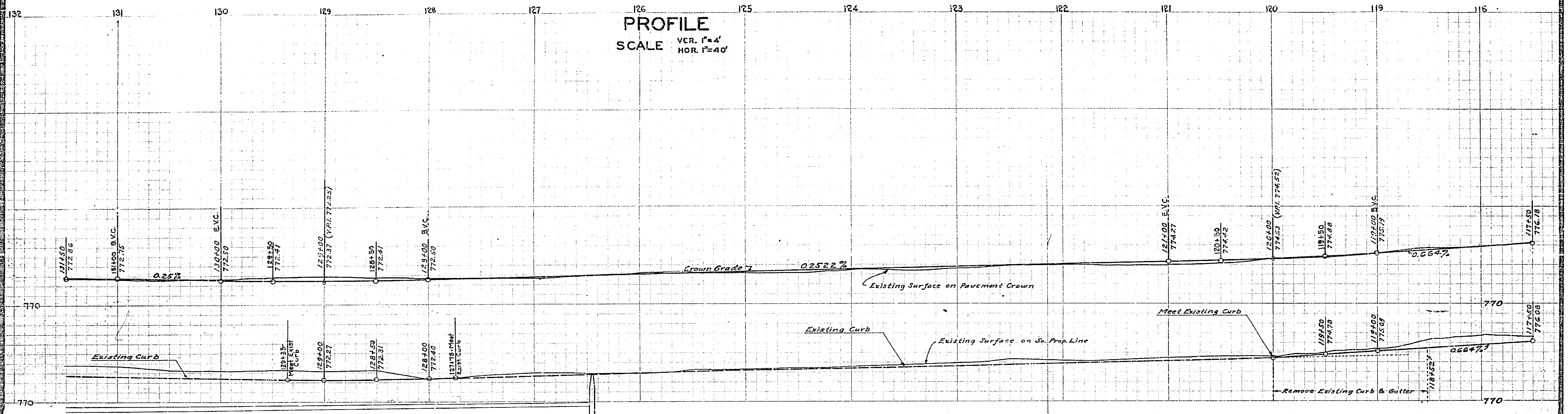
1051

1051

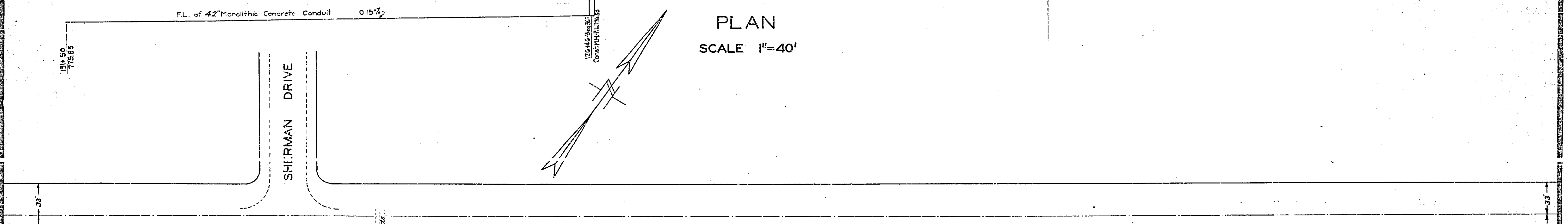
1001

KING COUNTY			
CASTLEMAN ST. to 202nd St.			
Drawing Number	Sheet Number	Total Sheets	Field Books
1051	3	6	238, 240
Drawn	Checked	Approved	
W.S.M. 1/6/4	Arthur N. Roney	February 8, 1940	
		N	

PROFILE
 SCALE VER. 1"=4'
 HOR. 1"=40'

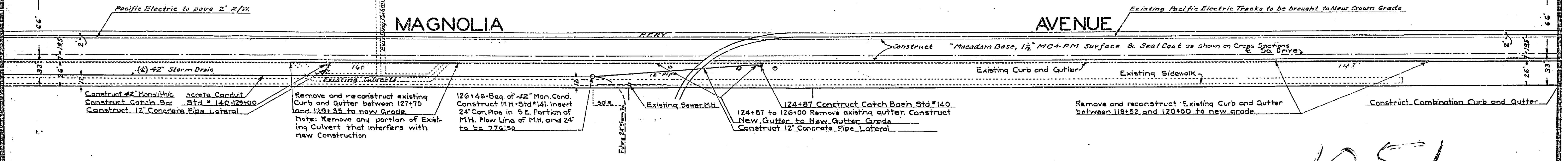


PLAN
 SCALE 1"=40'



MAGNOLIA

AVENUE



Construct 42" Monolithic concrete Conduit
 Construct Catch Basin Std. # 140
 Construct 12" Concrete Pipe Lateral

Remove and reconstruct existing
 Curb and Gutter between 127+75
 and 128+35 to new grade
 Note: Remove any portion of Exist-
 ing Culvert that interferes with
 new Construction

126+46-Req of 42" Man. Cond.
 Construct M.H. Std # 141. Insert
 24" Con. Pipe in S.E. Portion of
 M.H. Flow Line of M.H. and 24"
 to be 776.50

124+87 to 126+00 Remove existing gutter. Construct
 New Gutter to New Gutter Grade
 Construct 12" Concrete Pipe Lateral

Remove and reconstruct Existing Curb and Gutter
 between 118+52 and 120+00 to new grade

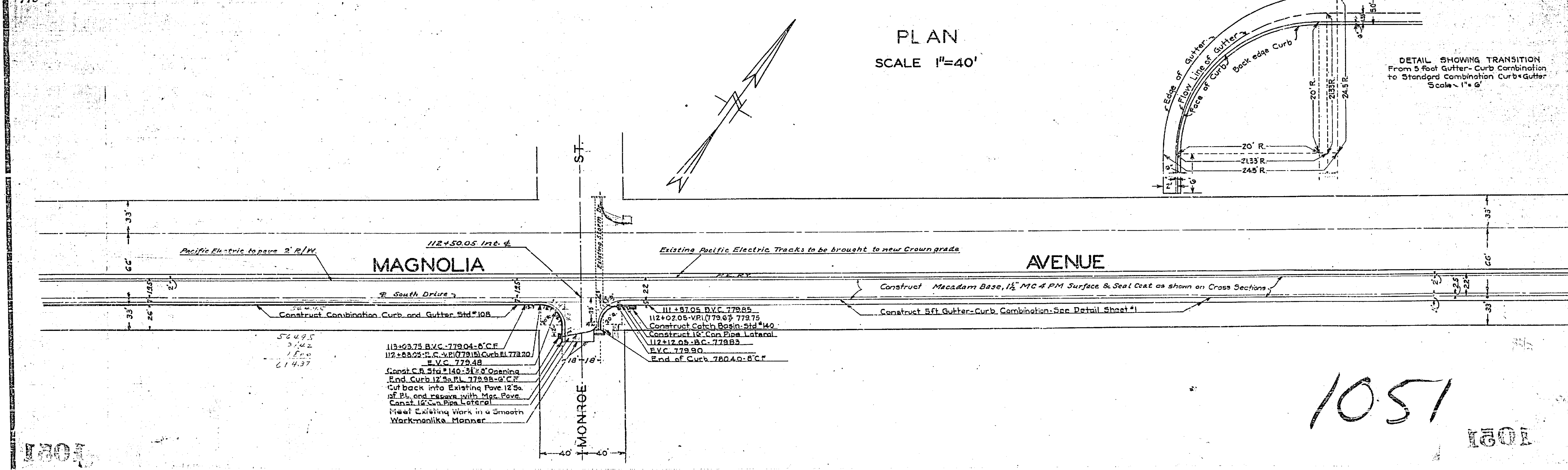
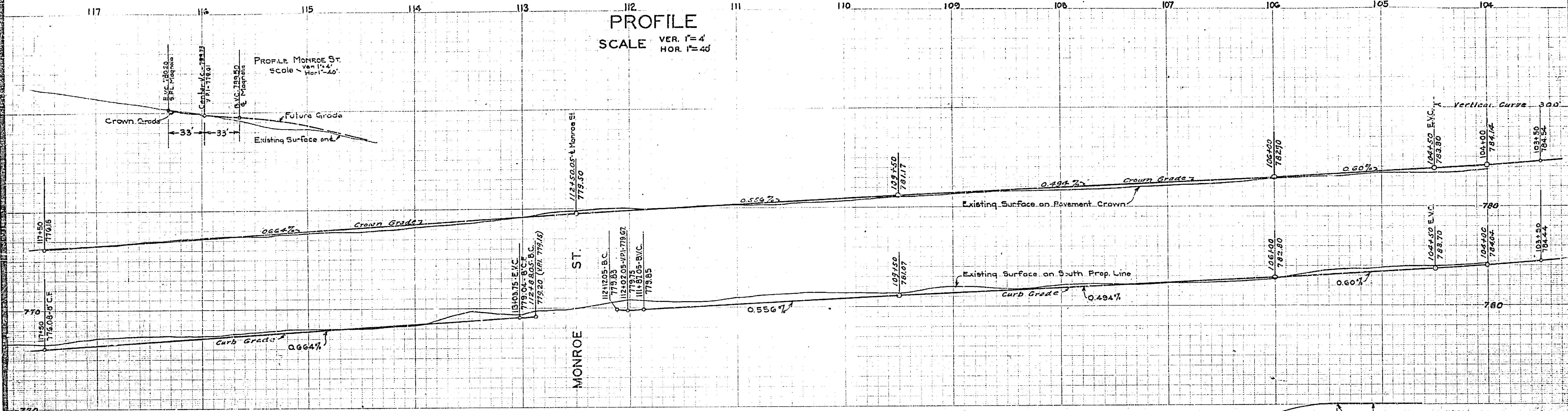
Construct Combination Curb and Gutter

1001

1051

1001

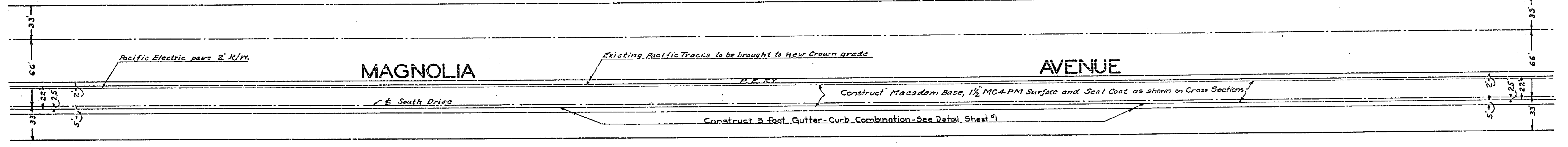
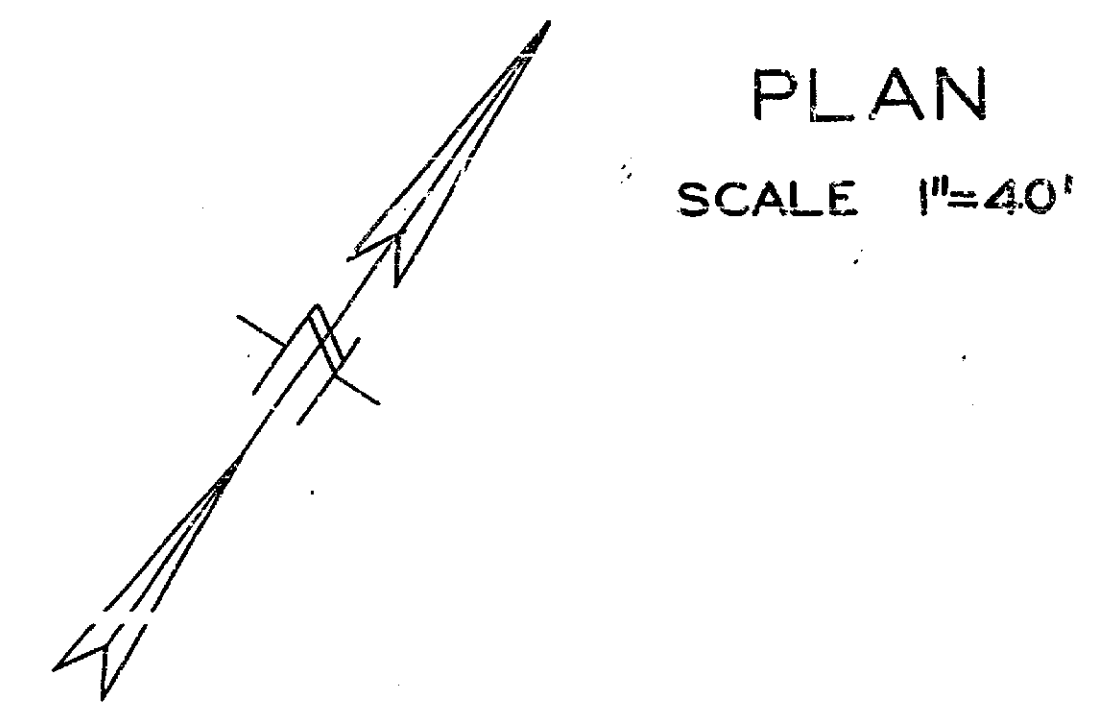
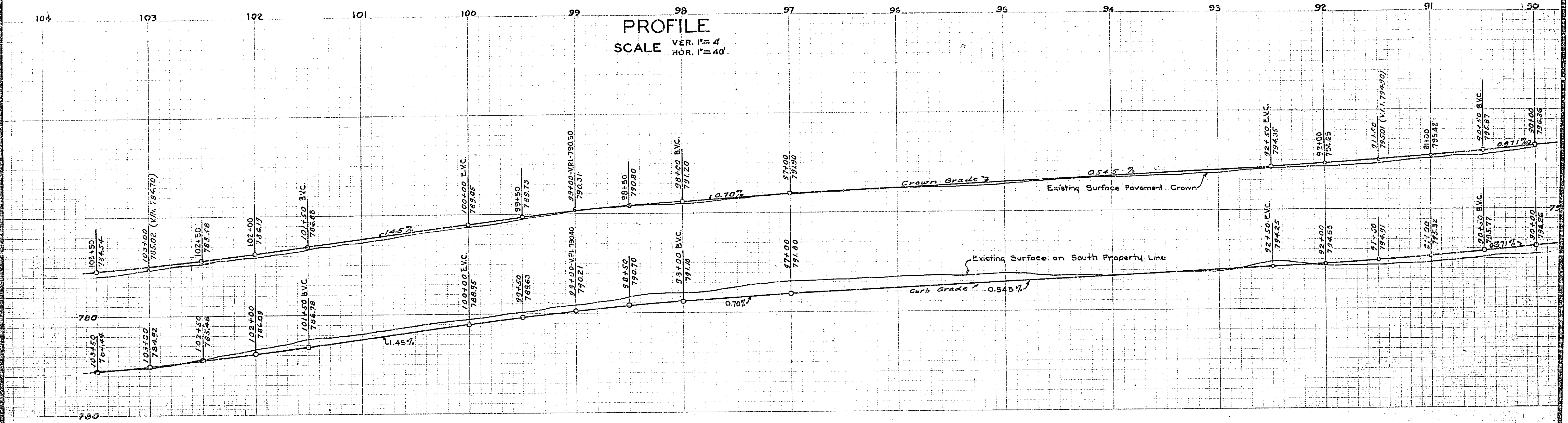
Drawing Number	Sheet Number	Total Sheets	Field Books
1051	4	6	238
Drawn	Checked	Approved	
W.B. 1/6/11	Arthur N. Kelsey	February 2, 1910	



1051

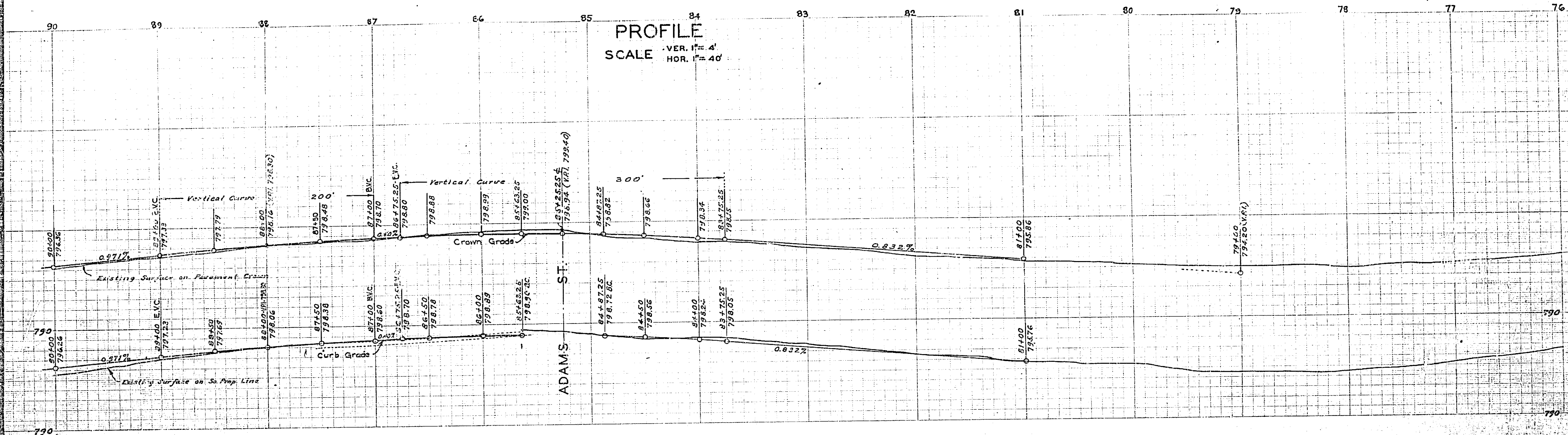
1001

MAGNOLIA AVENUE			
CASTLEMAN ST. TO 130th ST.			
Drawing Number	Sheet Number	Book Number	Field Books
1051	5	6	238
Drawn	Checked	Approved	
Arthur N. Keeley	Arthur N. Keeley	February 6, 1940	



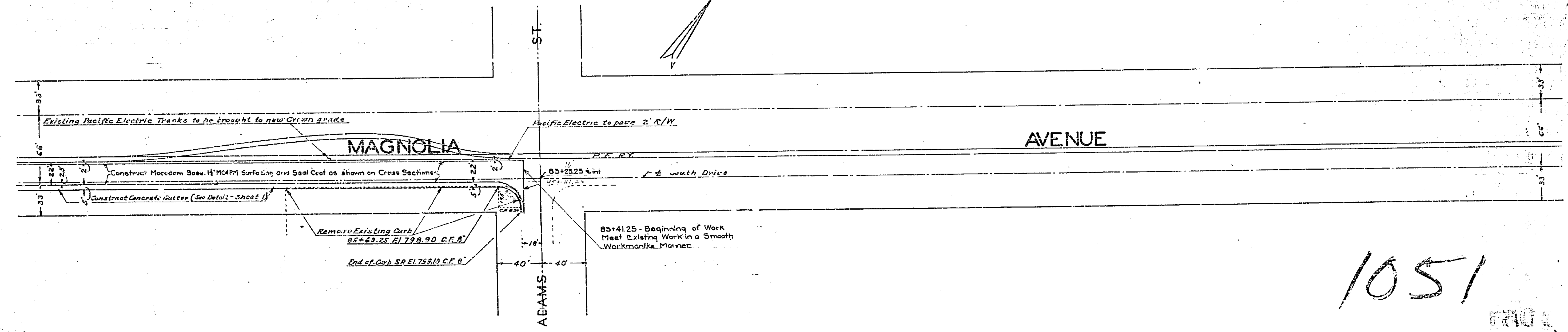
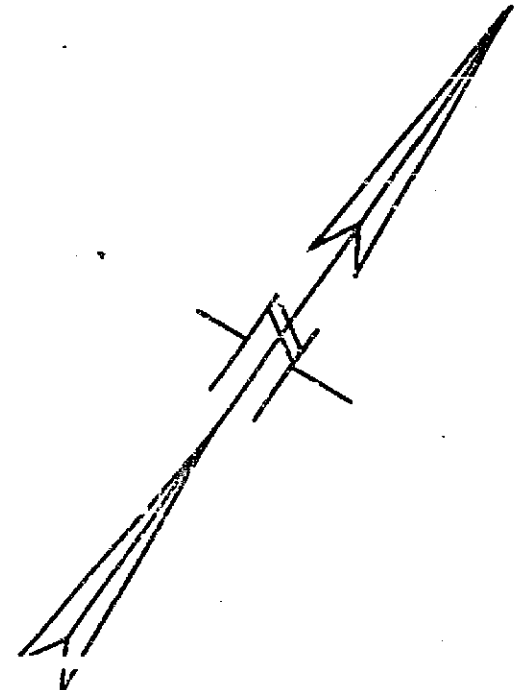
1051

MAGNOLIA AVENUE CASTLEMAN ST TO ADAMS ST			
Drawing Number	Sheet Number	Sheet	Field Book
1051	6	6	437, 438
Drawn	Checked	Approved	
W.S. 1/1/10	Arthur G. Galey February 6, 1910	H	



PROFILE
SCALE VER. 1" = 4'
HOR. 1" = 40'

PLAN
SCALE 1" = 40'



1051

1051