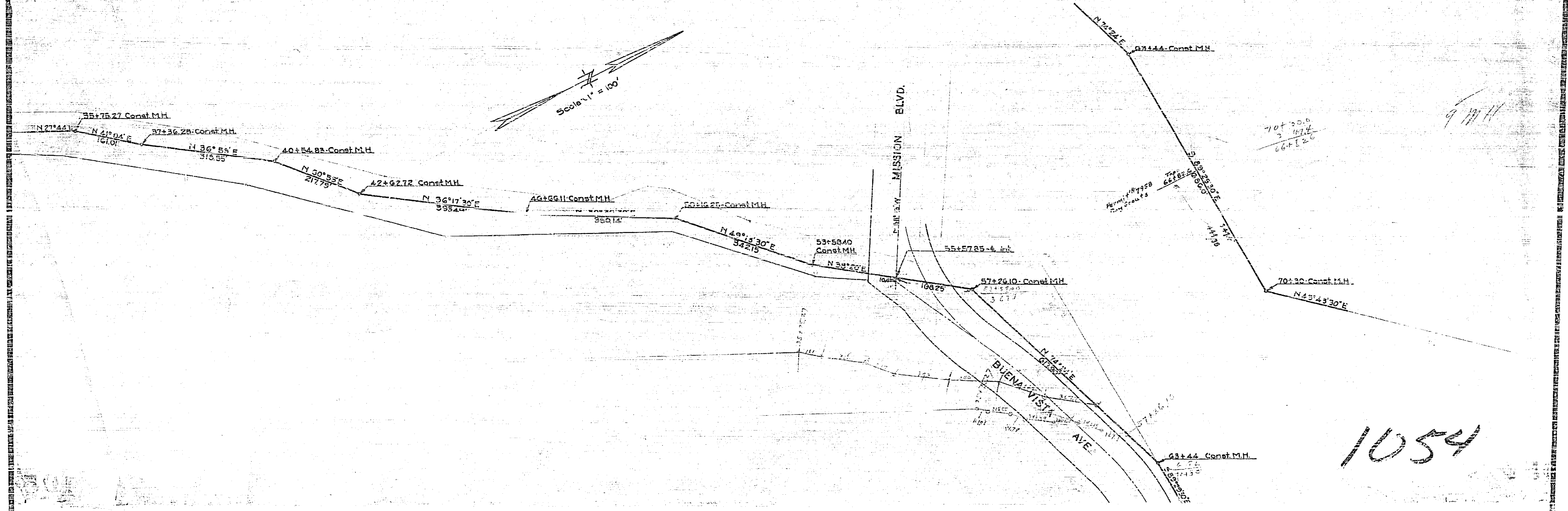
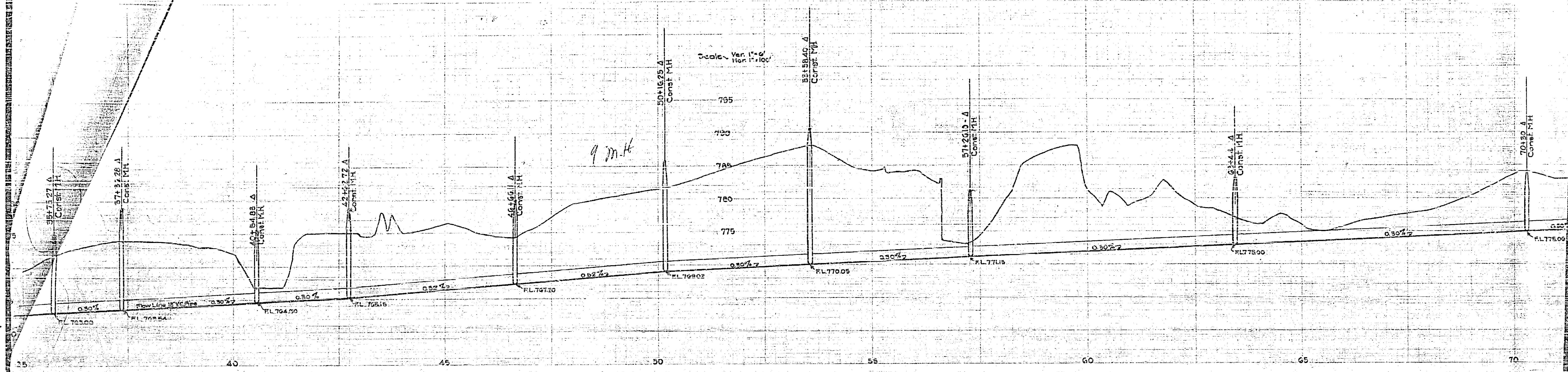
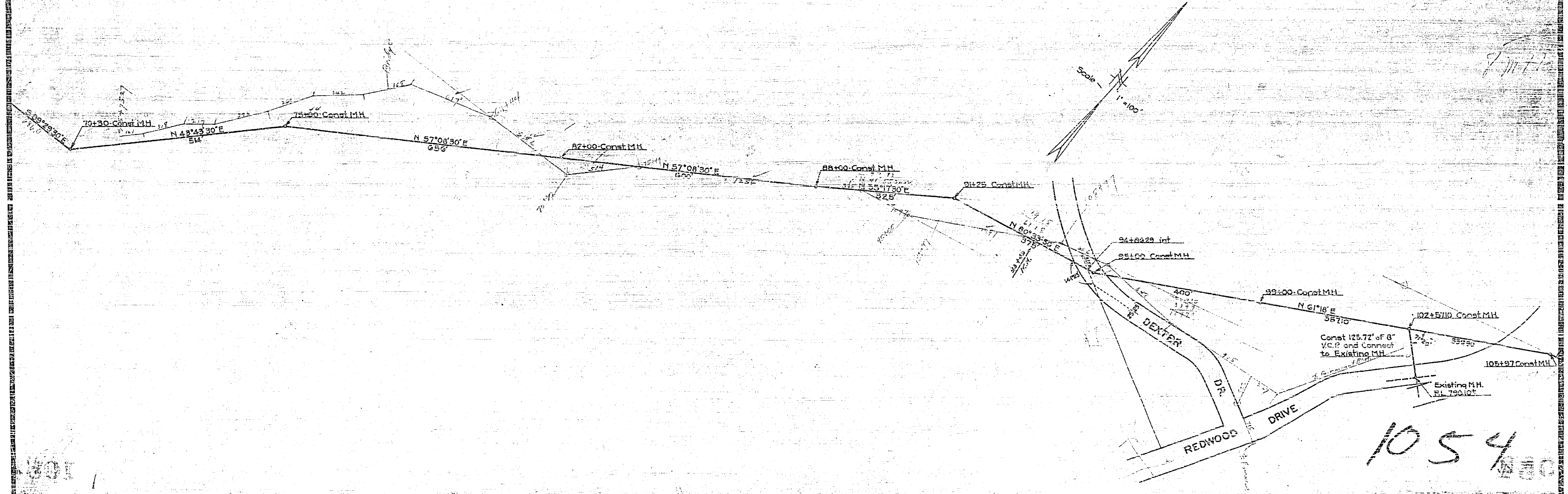
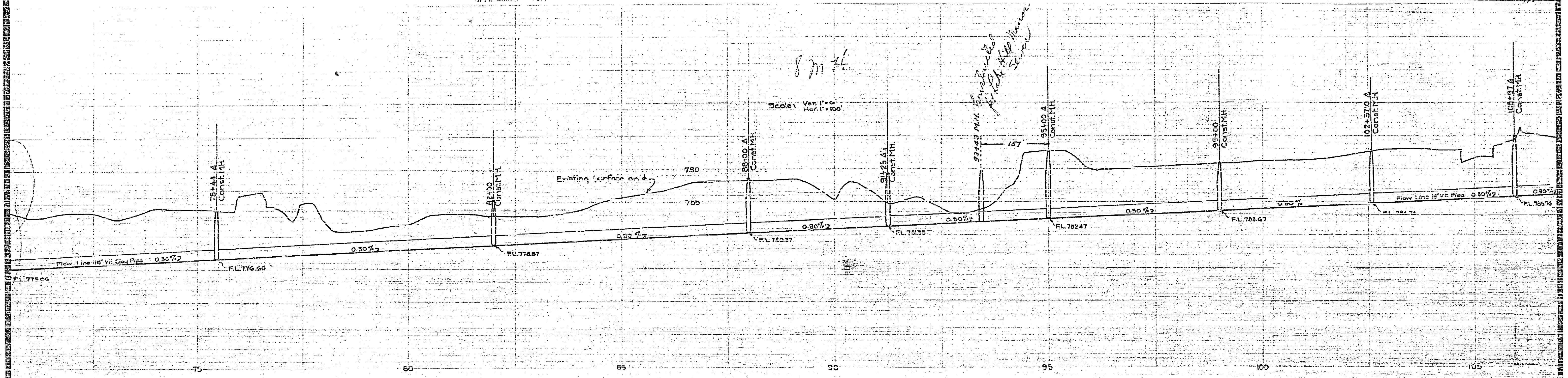


North Side Outfall Sewer			
Drawing Number	Sheet Number	Total Sheets	Field Book
1054	2	6	384
Drawn By	Checked By	Approved By	
Arthur R. Reidy	X	C. J. Pappas	
Nov. 5, 1940			

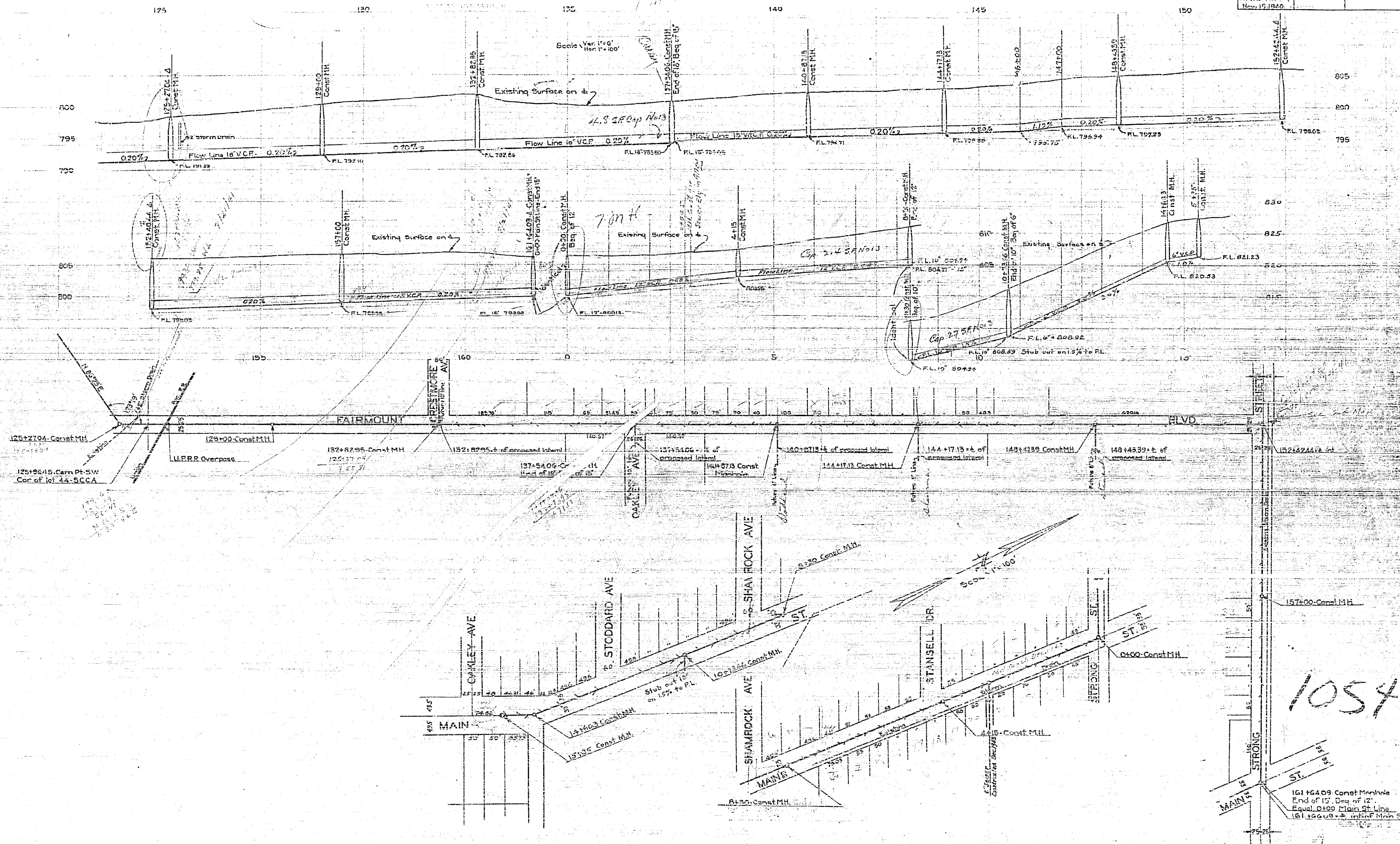


1054

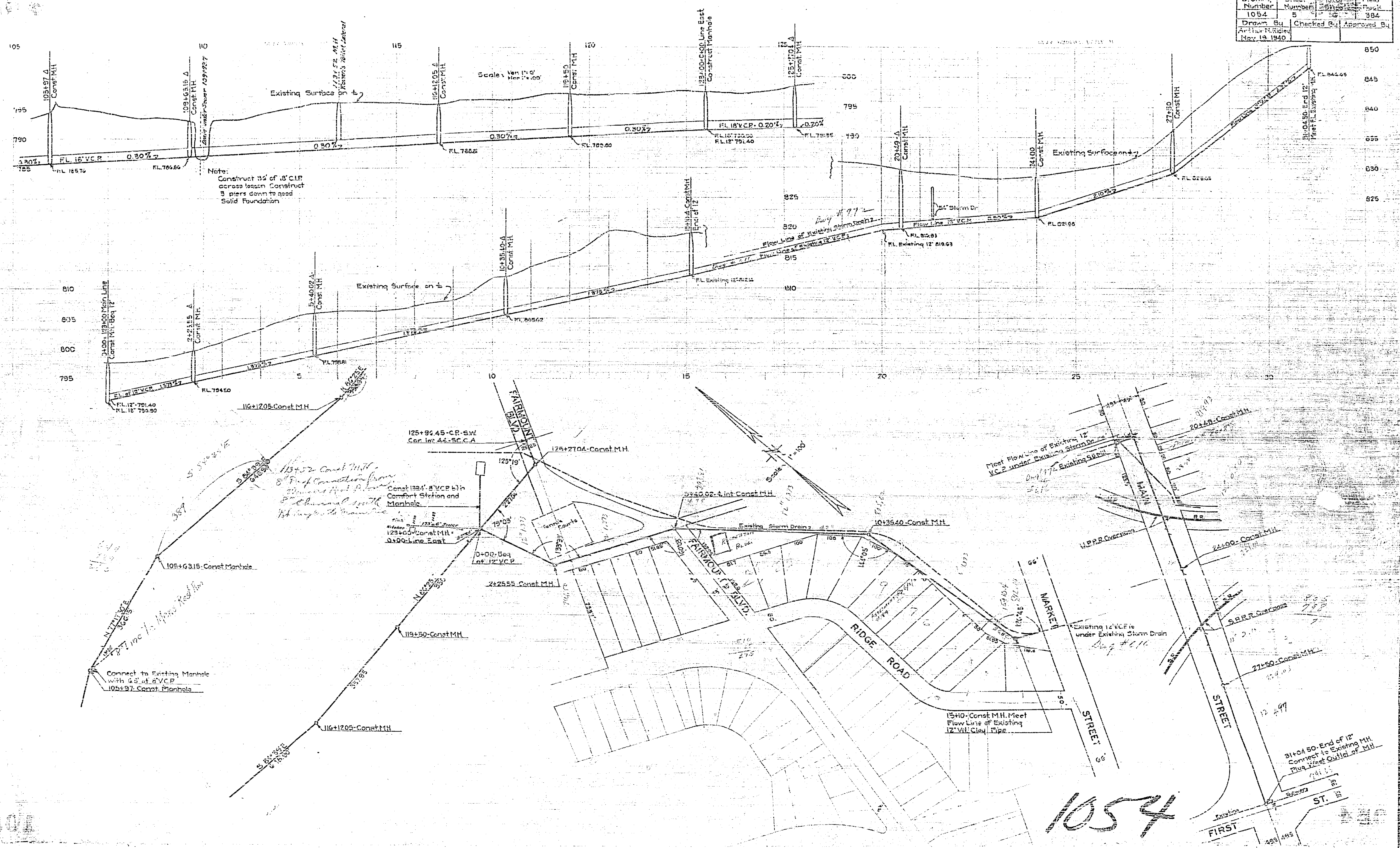
North Side Outfall Sewer			
Drawing Number	Sheet Number	Total Sheets	Field Number
ICEJ	3	12	352
Drawn By	Checked By	Approved By	
Arthur H. Kilday Nov. 6, 1940	N	[Signature]	



North Side Outfall Sewer			
Drawing Number	Sheet Number	Total Sheets	Field Book
1054	2	10	384
Drawn By		Checked By	Approved By
Arthur N. ...			
Nov. 19, 1929			



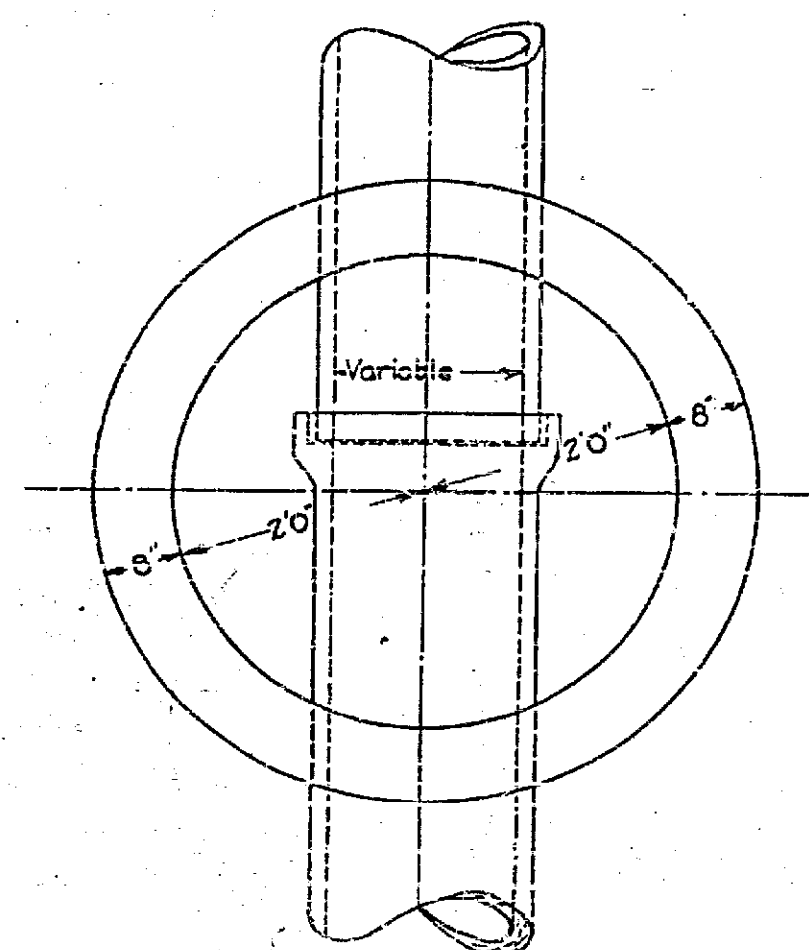
North Side Outfall Sewer			
Drawing Number	Sheet Number	Total Sheets	Field Book
1054	5	10	384
Drawn By	Checked By	Approved By	
Arthur M. Rieley		Nov. 19, 1940	



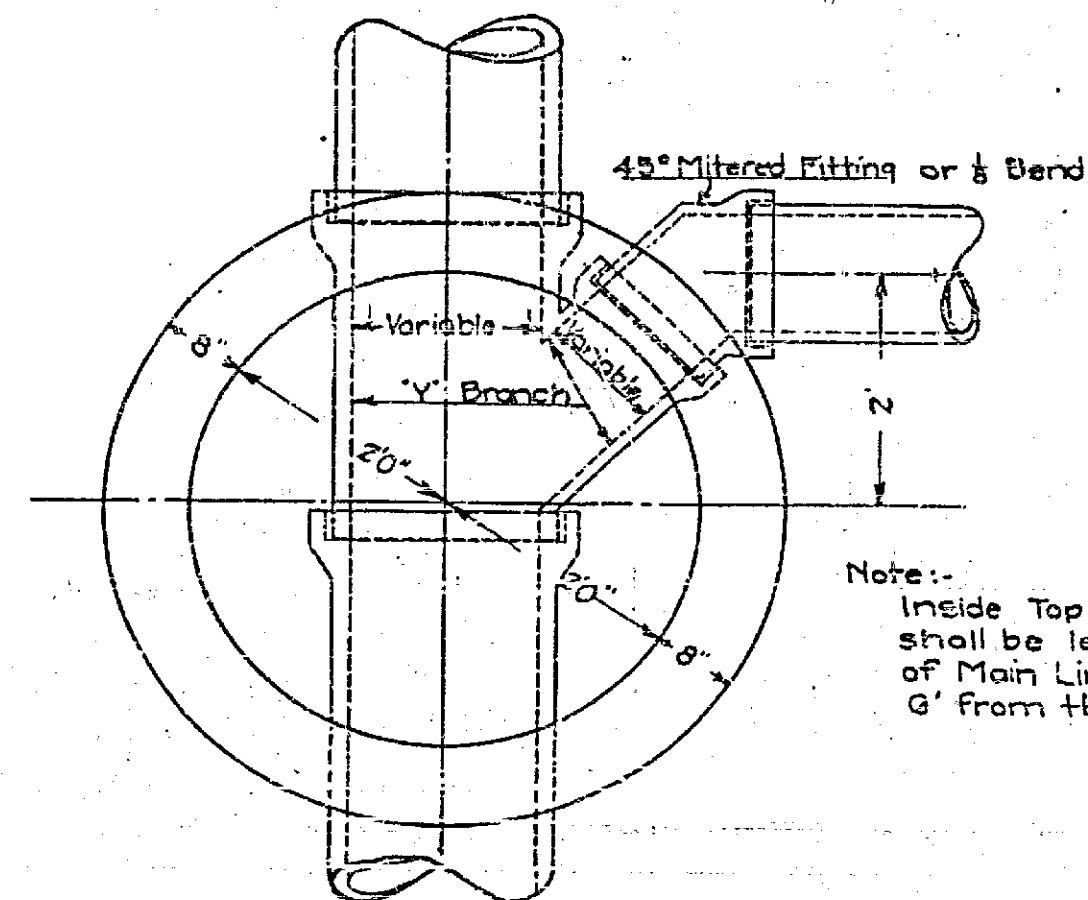
1054

NORTH SIDE OUTFALL SEWER			
Drawing Number	Sheet	Total Sheets	Field Book
1052	6	6	
Drawn By	Checked By	Approved By	

PLAN OF MANHOLE WITH STRAIGHT INVERT
Scale: 1/2" = 1'

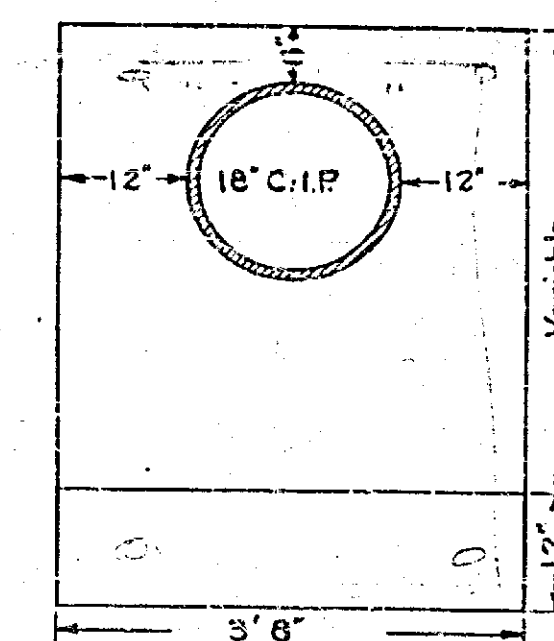


PLAN OF MANHOLE WITH BRANCH LATERAL
Scale: 1/2" = 1'



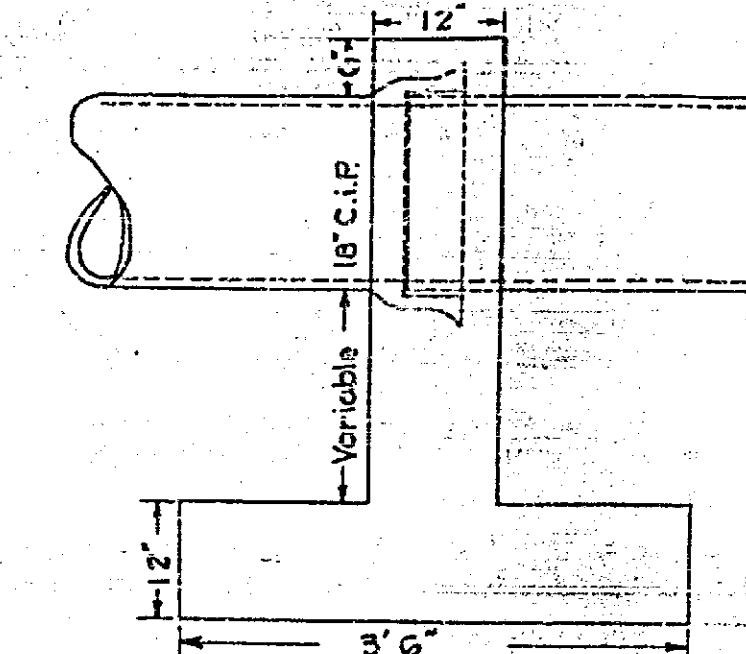
Note:- Inside Top of Branch Lateral shall be level with Inside Top of Main Line at not more than 6' from the Center of Manhole.

FRONT ELEVATION

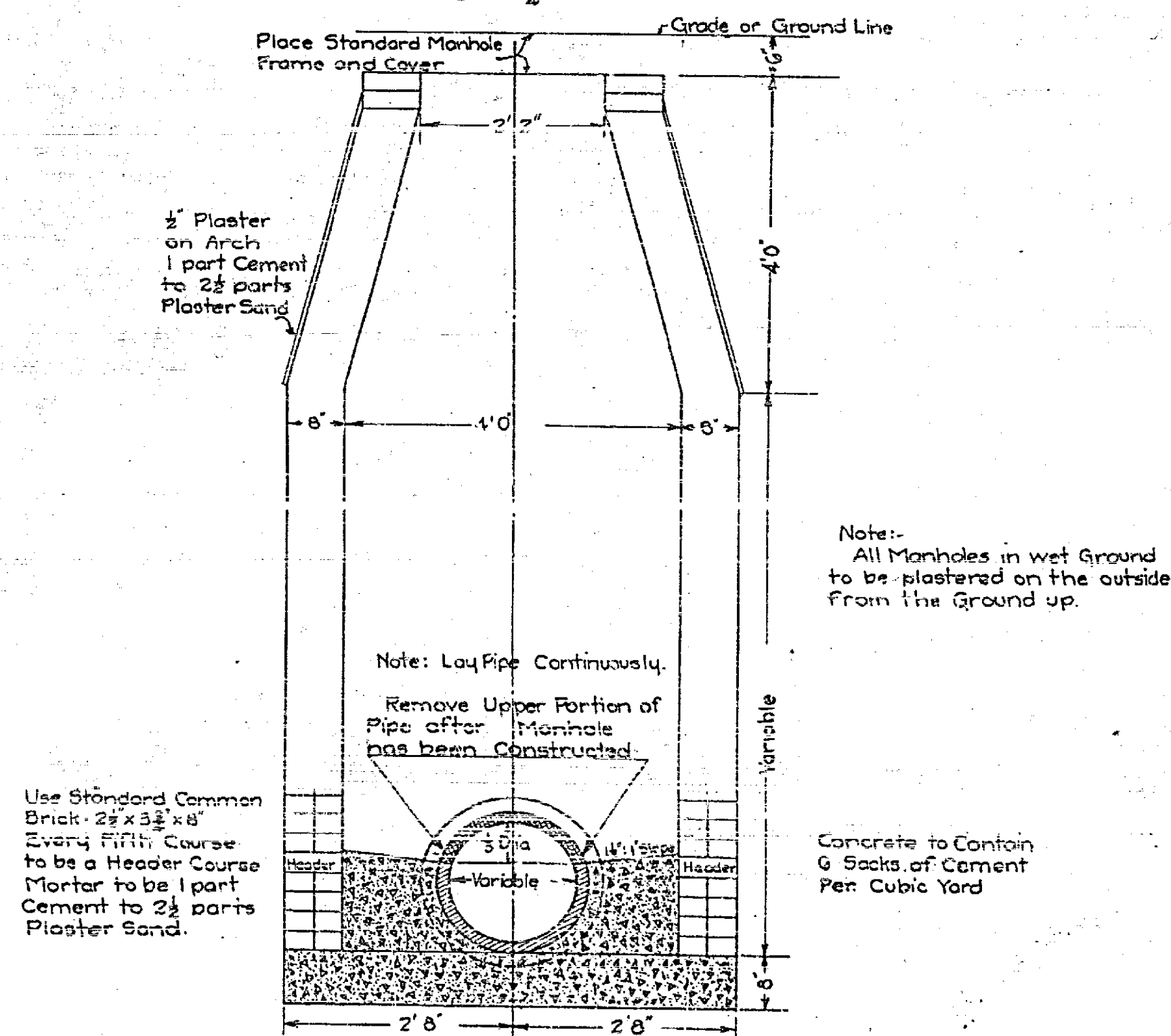


PIERS
Scale: 1/2" = 1'

SIDE ELEVATION



SECTION
Scale: 1/2" = 1'



METHODS OF LAYING PIPE

FIG. 1
YIELDING SOILS

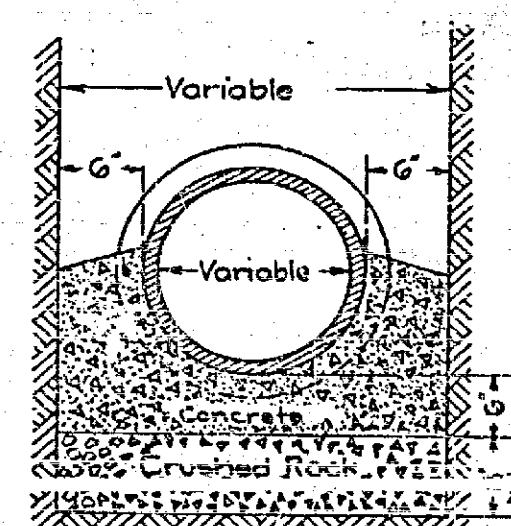


FIG. 2
QUICKSAND

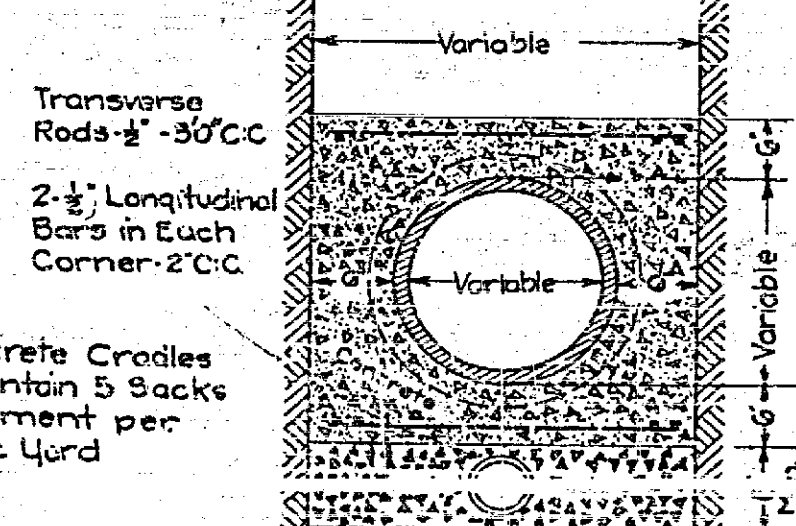


FIG. 3
ROCK

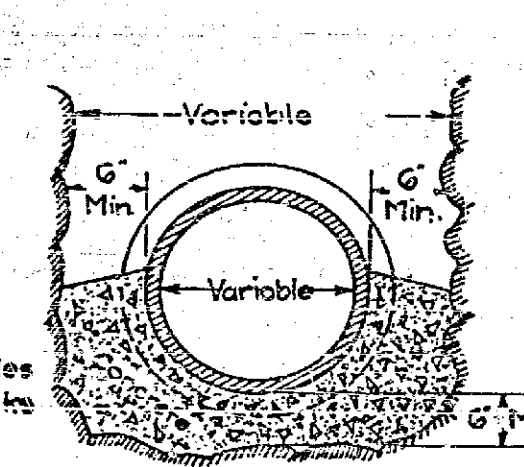
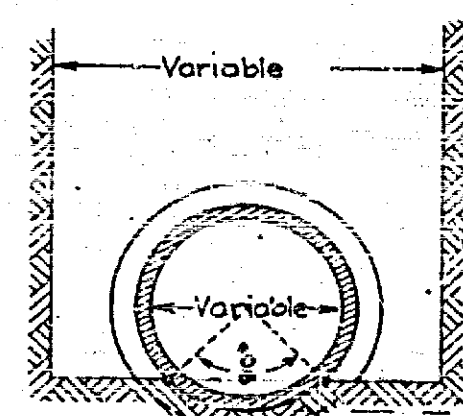


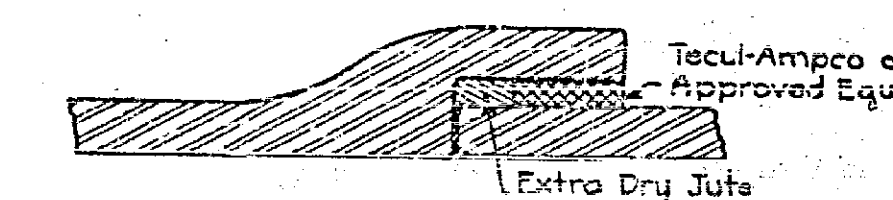
FIG. 4
FIRM SOIL



Bottom Shaped for Lower Quadrant of Pipe, Additional Excavations for Sockets

Note:
Use Standard Strength V.C. Pipe where Coverage is Less than 12' deep
Use Extra Strength V.C. Pipe where Coverage is More than 12' deep

DETAIL OF JOINT



Joints to be caulked with Ex. Dry Jute and the remainder to be poured with Tecul-Ampco or Approved Equal Minimum 6' to 15' V.C. Pipe to be 1 1/2", and 18' to 24' to be 2"

1054