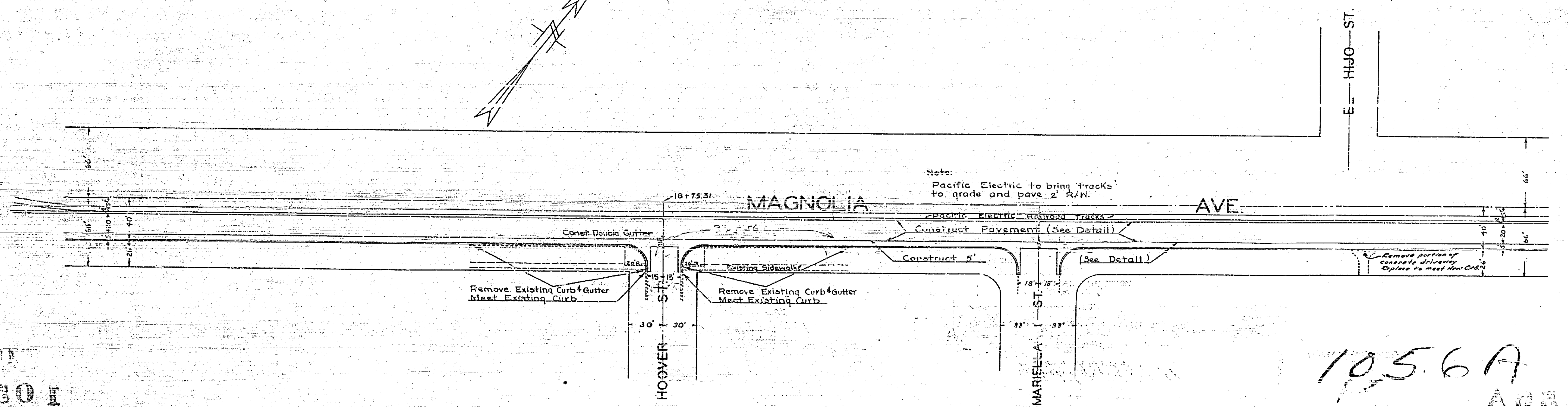
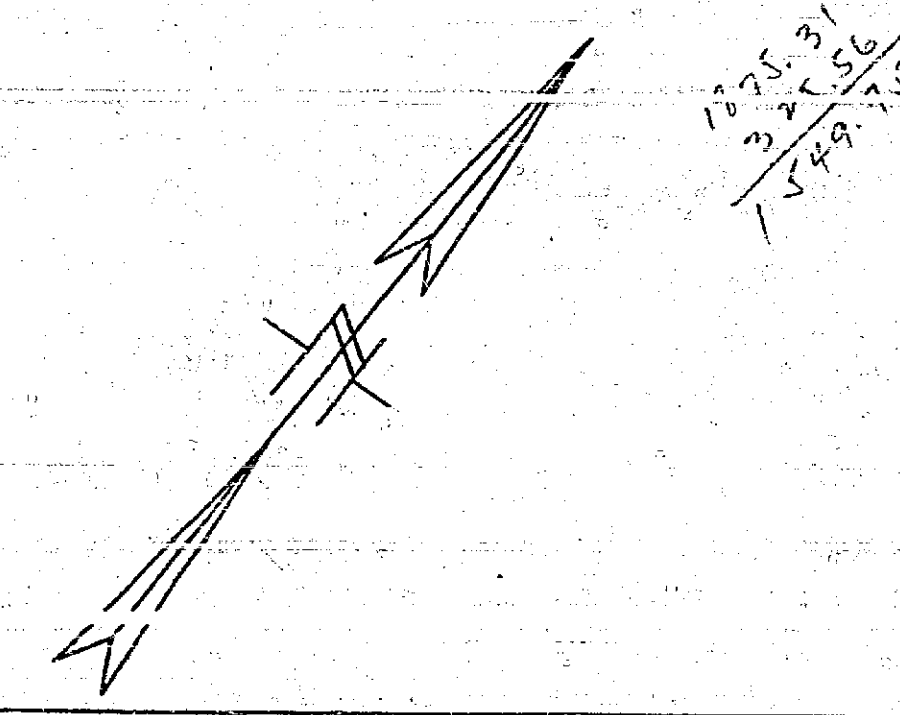
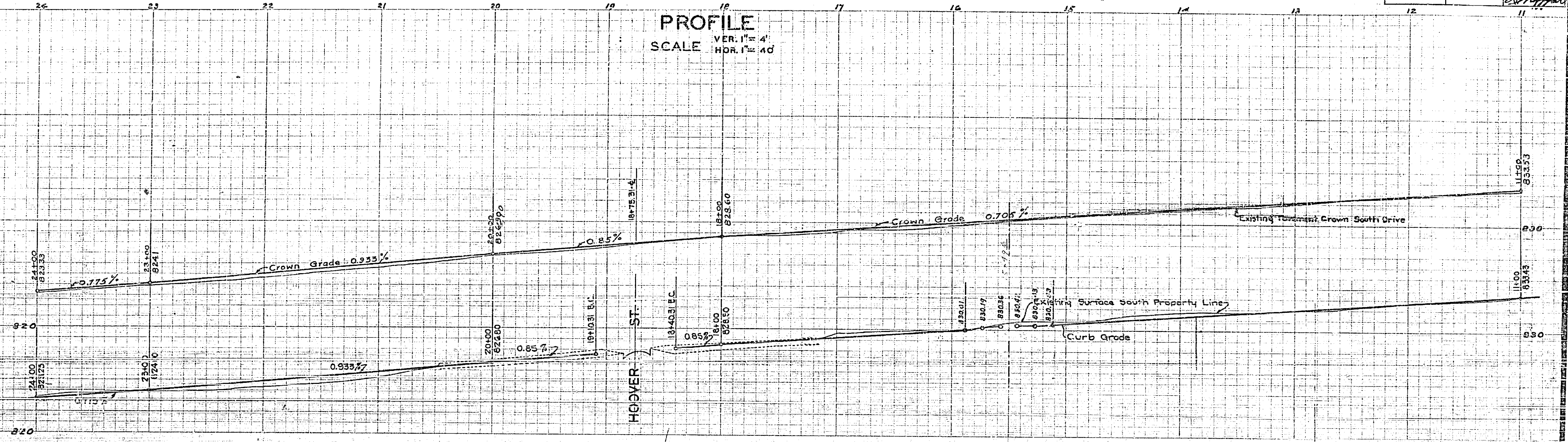


MISSING

1056A

MAGNOLIA AVENUE			
Drawing Number	Sheet Number	Total Sheets	Plot Books
1056A	2	7	254
Drawn	Checked	Approved	
		E. J. Joffe	



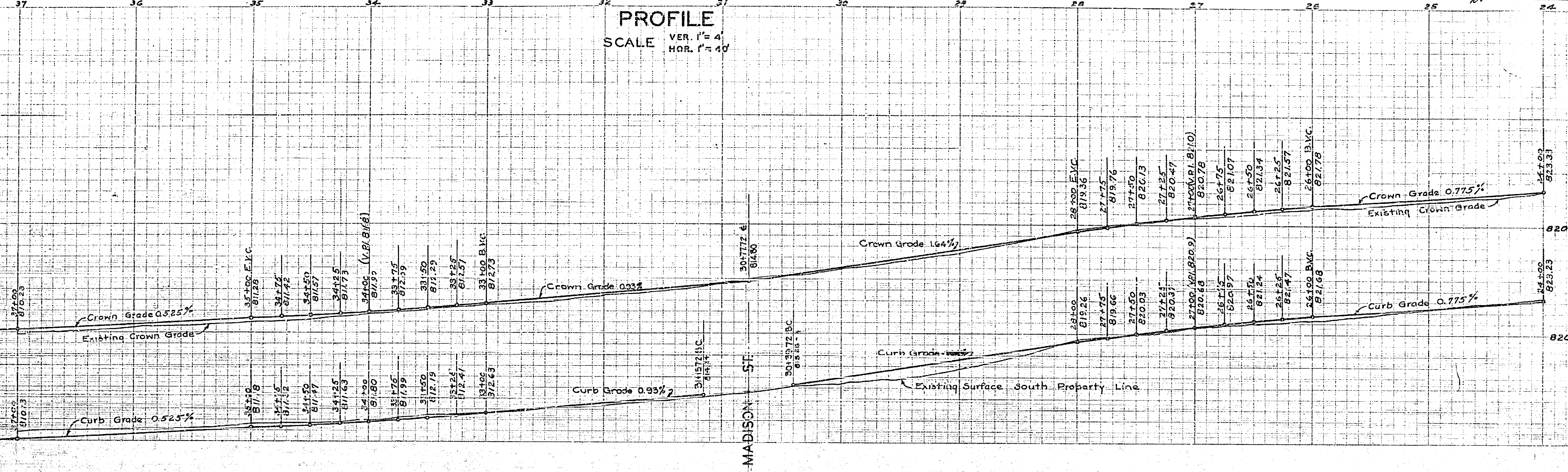
Note:
Pacific Electric to bring tracks to grade and pave 2' R/W.

1056A

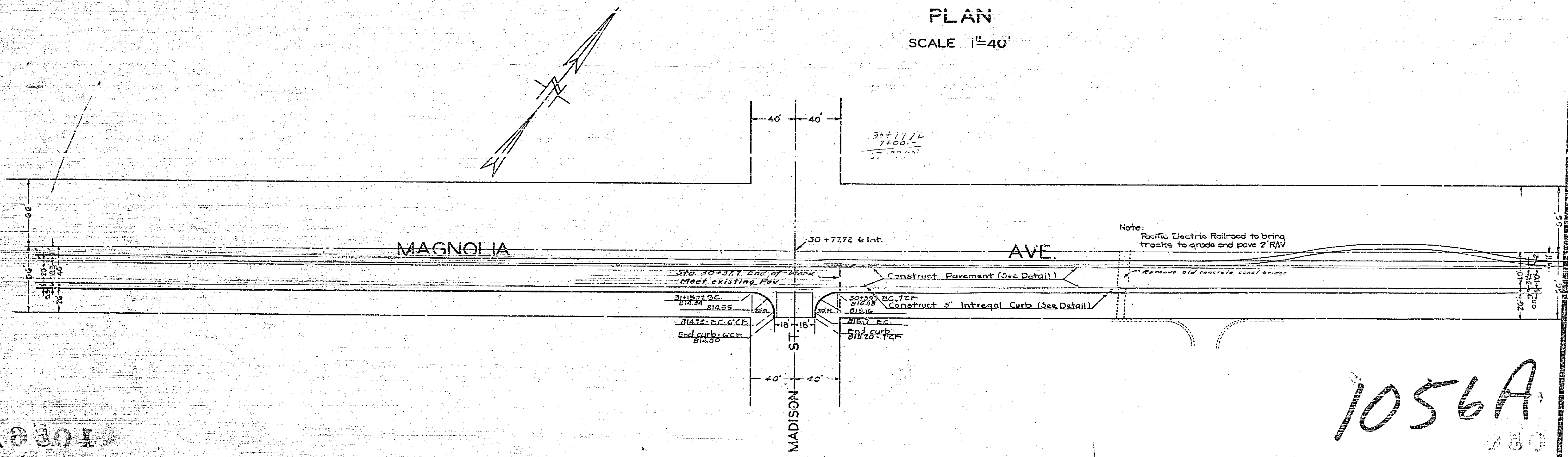
1056A

MAGNOLIA AVENUE			
Application Ave to Adams St. 314 Drive			
Drawing Number	Sheet	Total Sheets	Field Books
1056A	3	7	234
Drawn	Checked	Approved	

PROFILE
SCALE VER. 1"=4'
HOR. 1"=40'



PLAN
SCALE 1"=40'

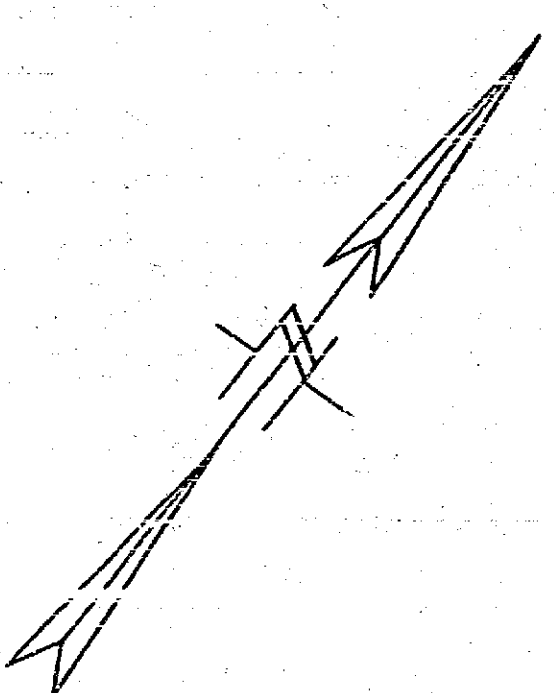
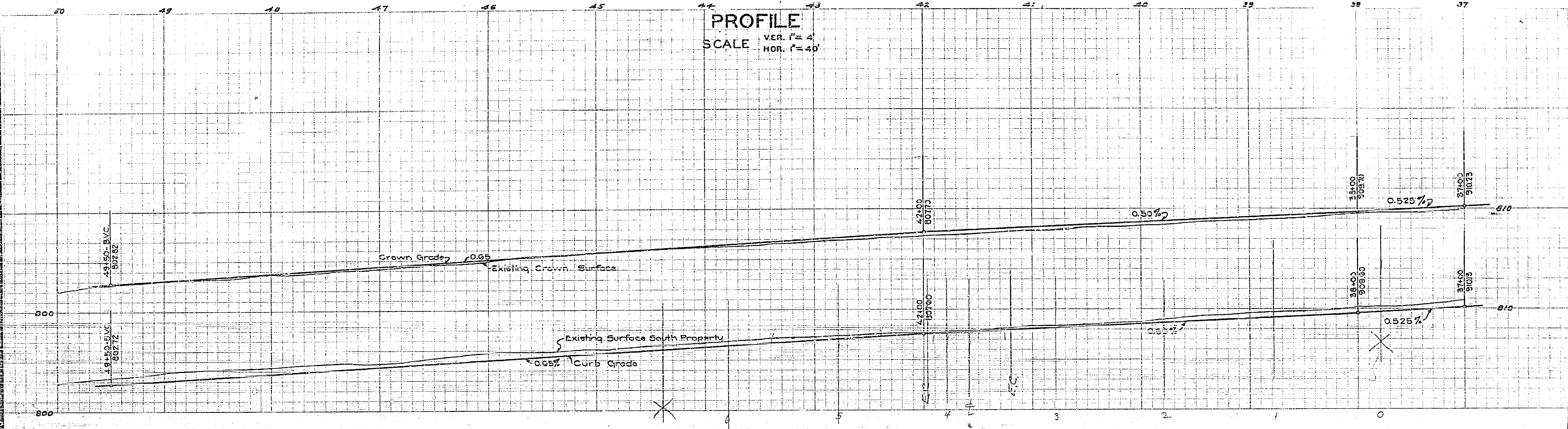


Note:
Pacific Electric Railroad to bring tracks to grade and pave 2' R/W

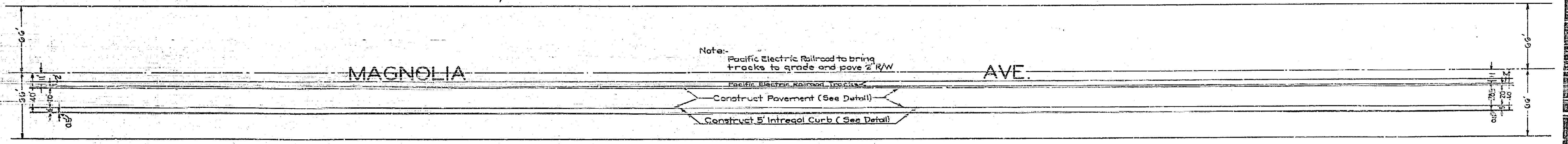
1056A

1056A

MAGNOLIA AVENUE			
Alignment from Adams St.			
Stationing	Sheet	Block	Block
1056A	4	7	234, 237
Drawn	Checked	Approved	



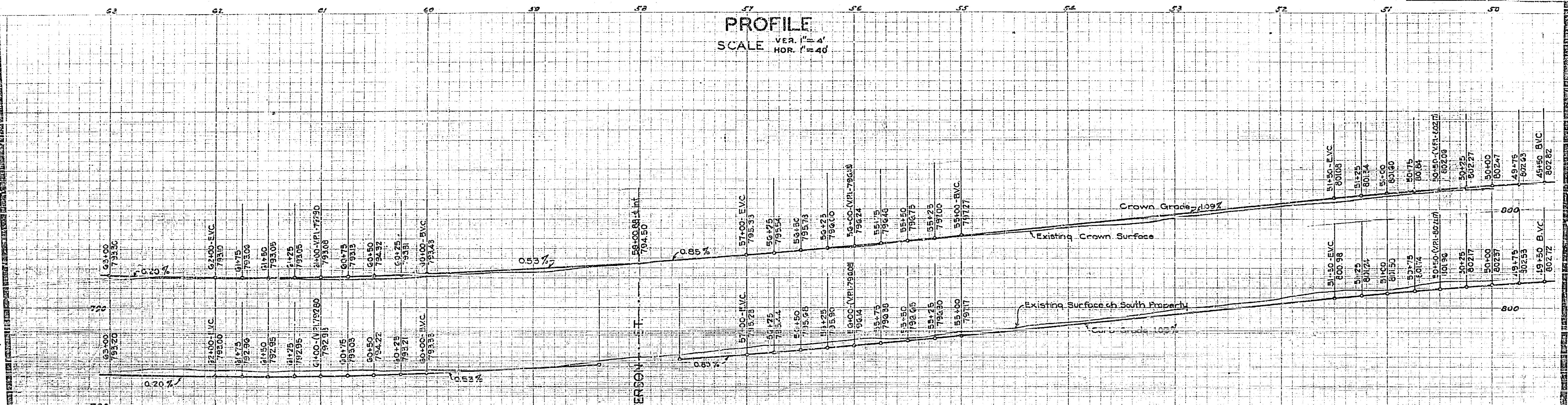
PLAN
SCALE 1"=40'



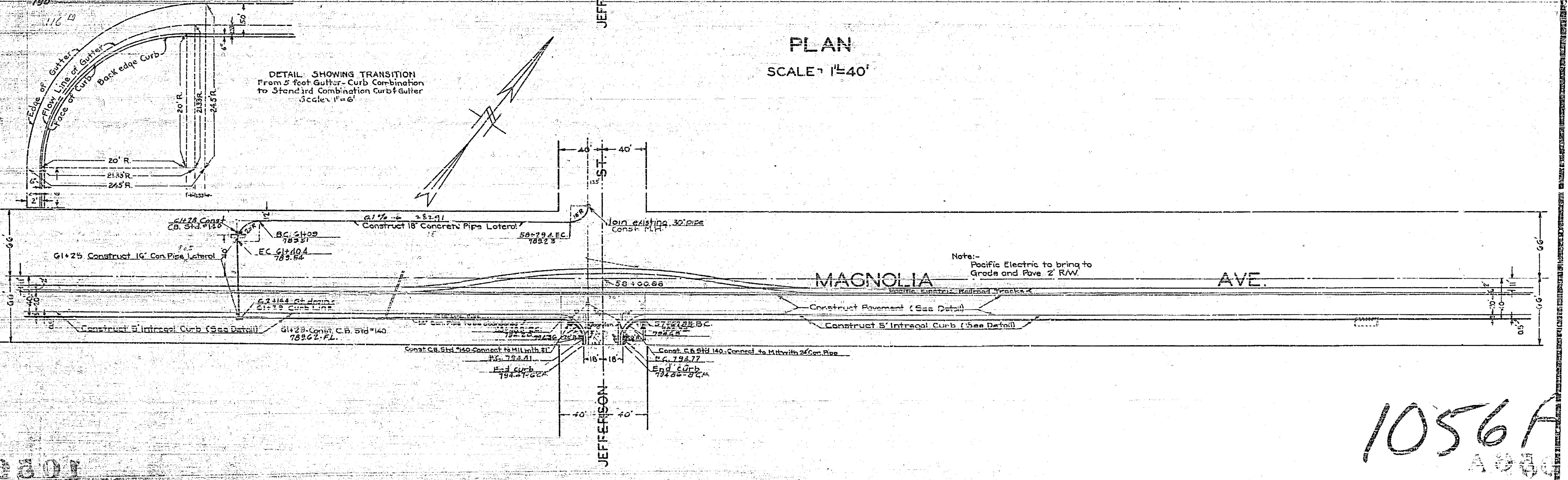
1056A

MAGNOLIA AVENUE			
Location: Adams St. to Adams St.			
Design Number	Sheet Number	Sheet Total	Block Number
1056A	5	7	237
Drawn	Checked	Approved	

PROFILE
SCALE VER. 1"=4'
HOR. 1"=40'



PLAN
SCALE 1"=40'

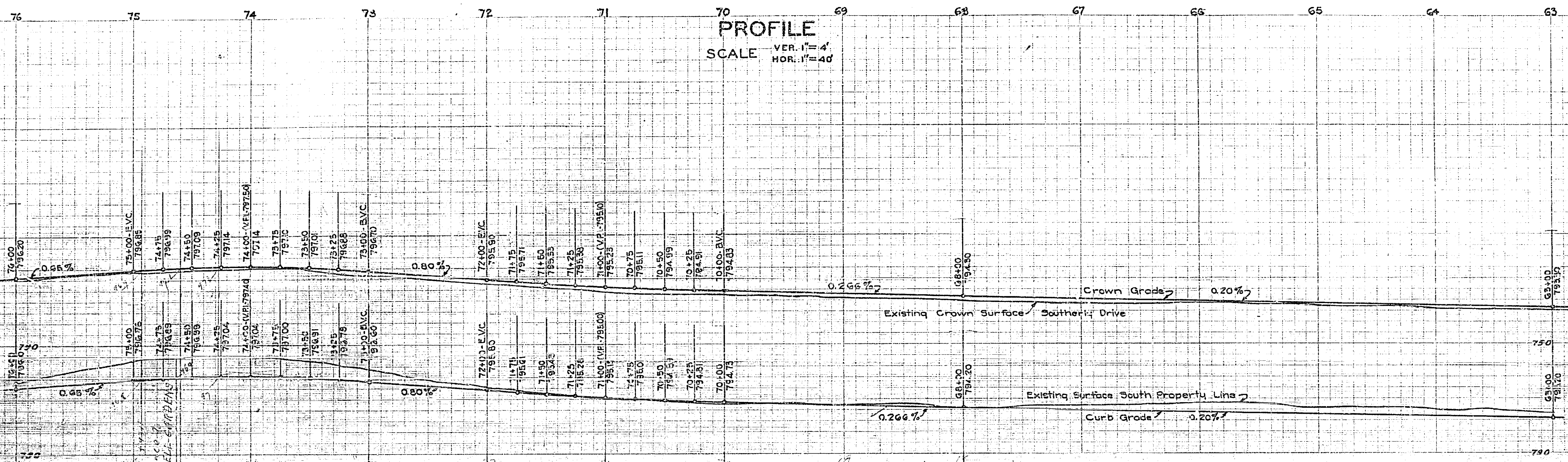


1056A
1000

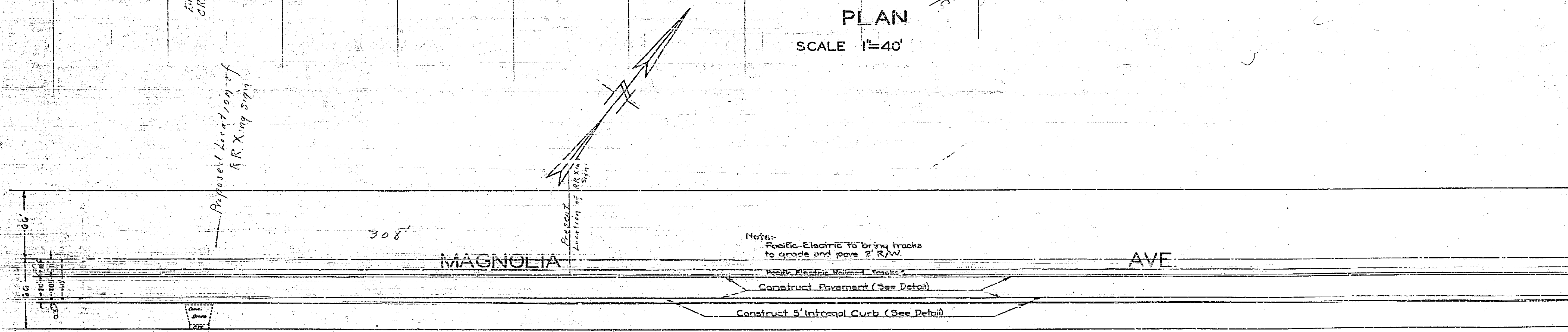
Magnolia Avenue			
Drawing Number	Sheet	Sheet	Field
1056A	7	237	DAK
Drawn	Checked	Approved	

75+00.00
10+00.00
74+00.00

PROFILE
SCALE VER. 1"=4'
HOR. 1"=40'



PLAN
SCALE 1"=40'

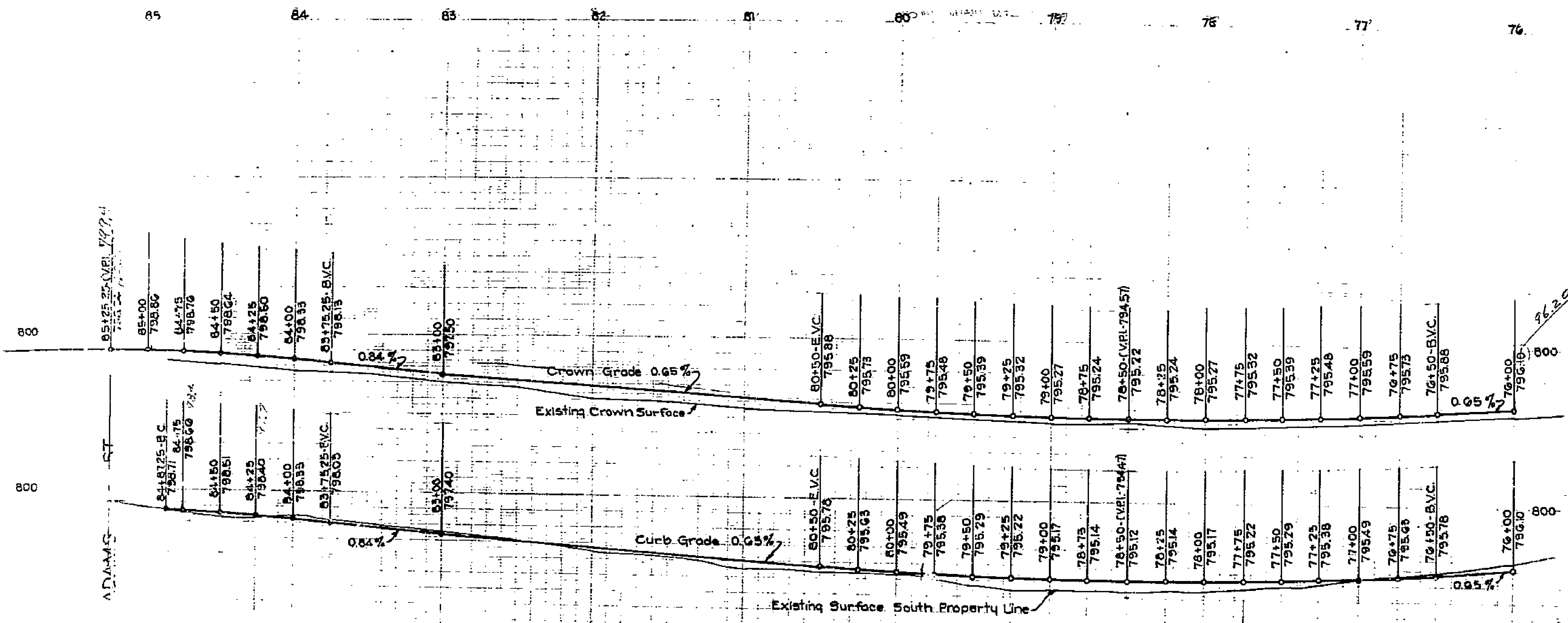


1056A

1056A

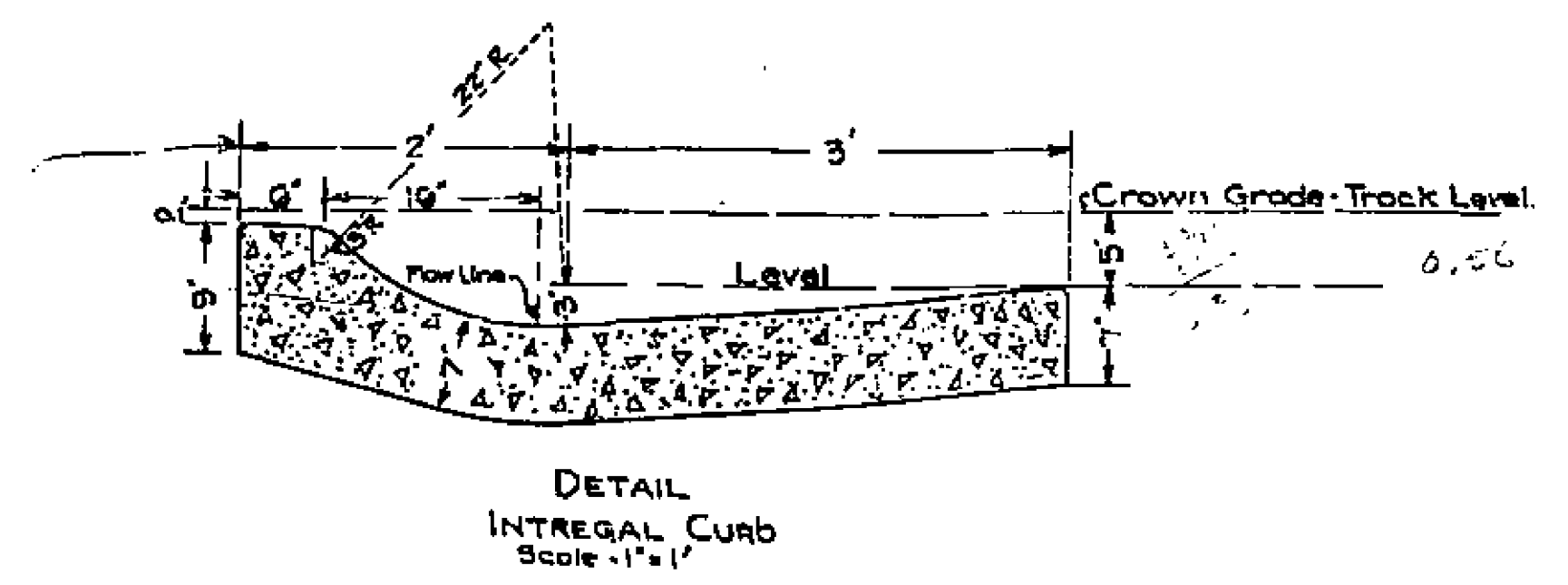
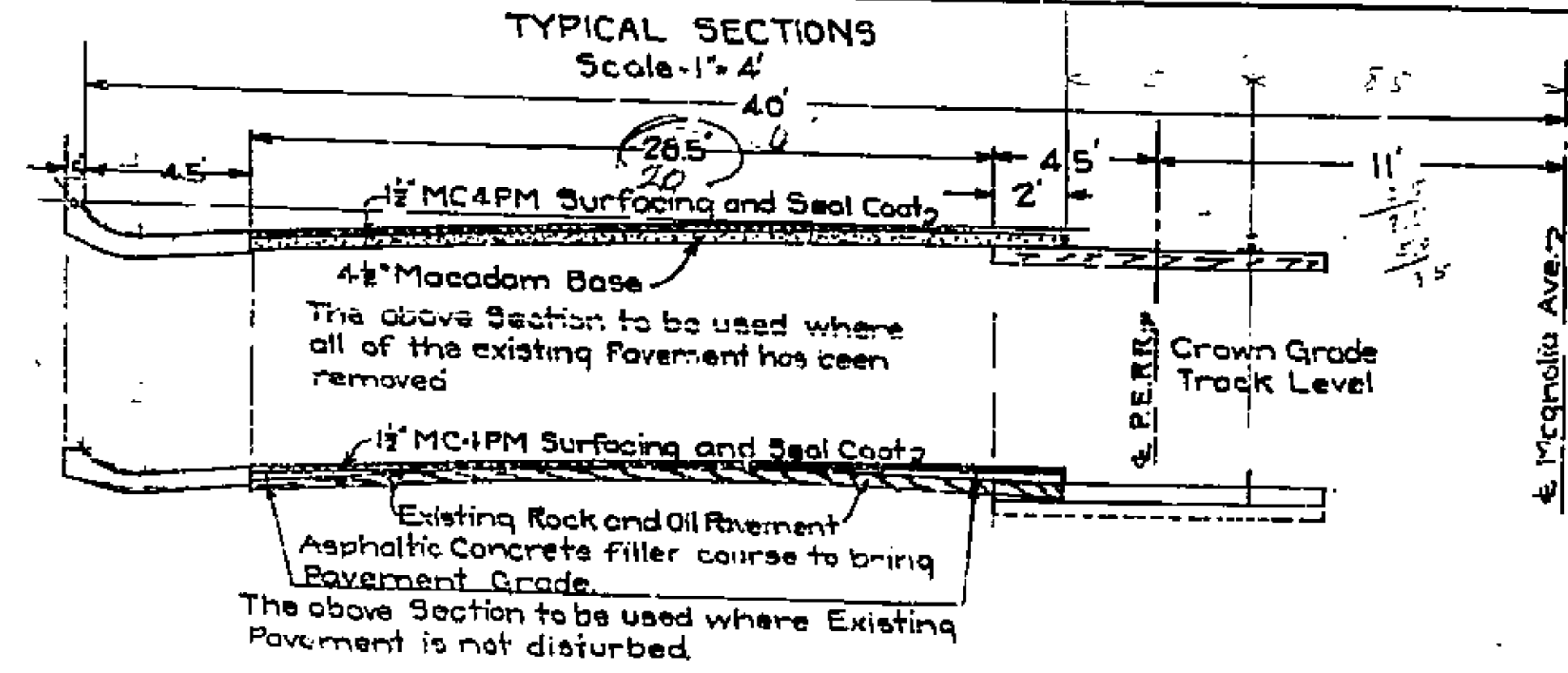
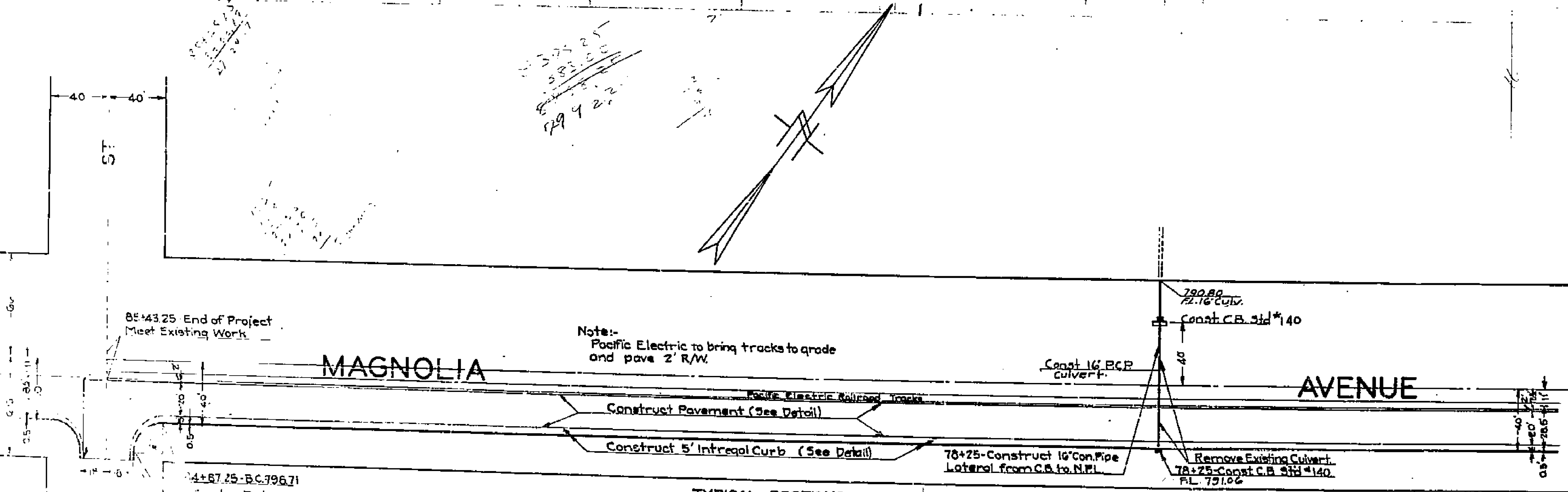
Magnolia Ave., Arlington Ave. to Adams			
Drawing Number	Sheet Number	Total Sheets	Plot Number
1056-A	7	7	232-A-37
Drawn	Checked	Approved	

7-22-27
10-32-27
7-23-27



PLANS AND PROFILES
OF THE PROPOSED IMPROVEMENT OF
MAGNOLIA AVENUE
FROM ARLINGTON AVE. TO ADAMS ST.
STATE HIGHWAY ROUTE 43
ENGINEERING DEPT. RIVERSIDE, CALIF.

APPROVED: *La. J. J. J.*
CITY ENGINEER
REG. ENG. NO. 1312.



1056