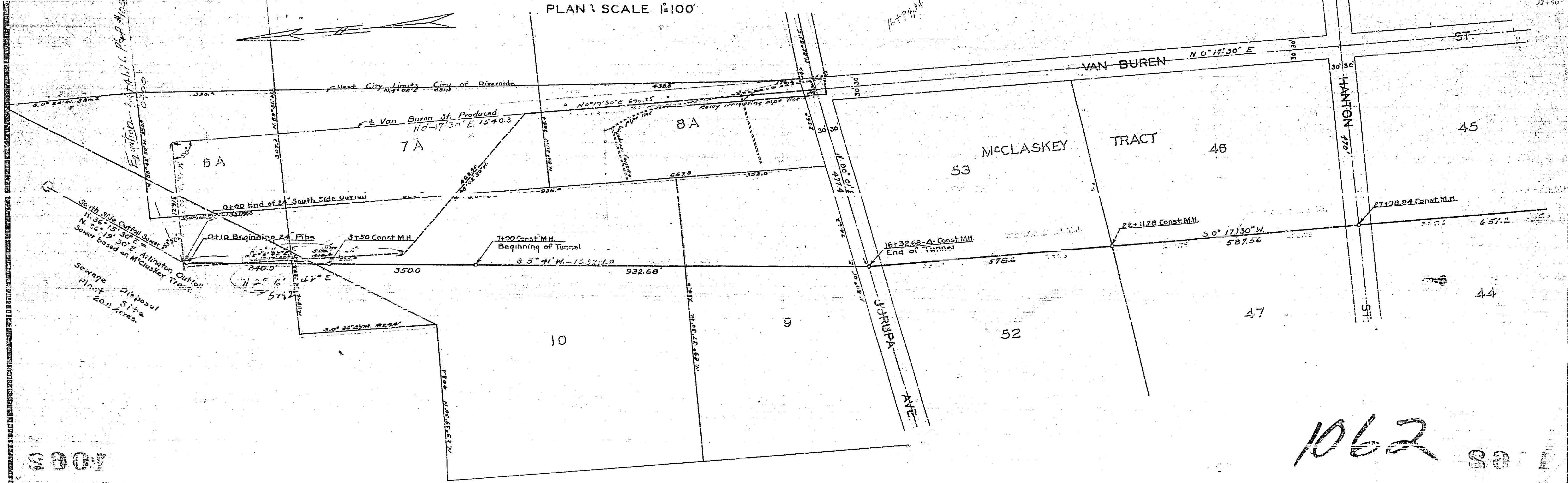
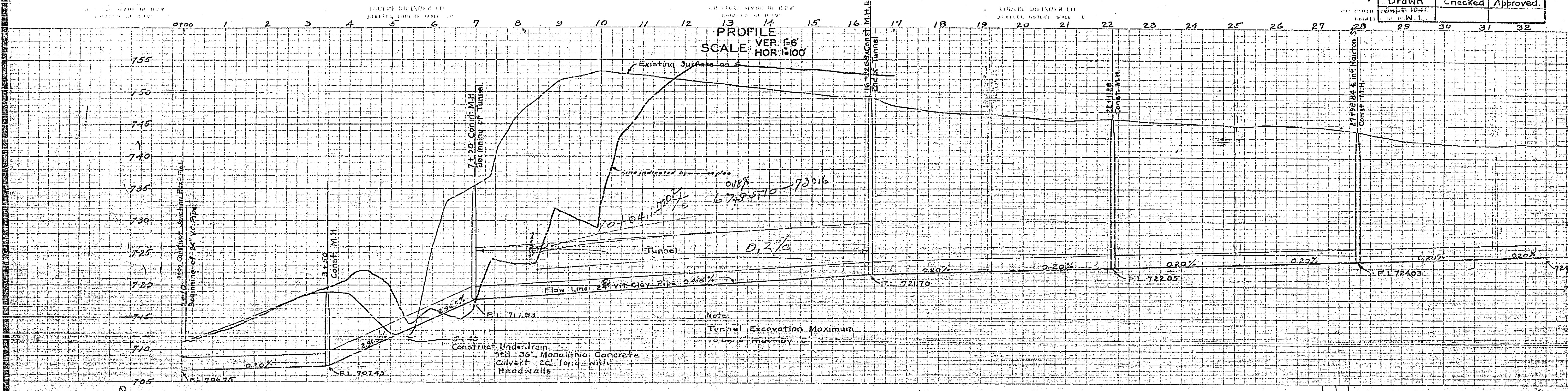


003

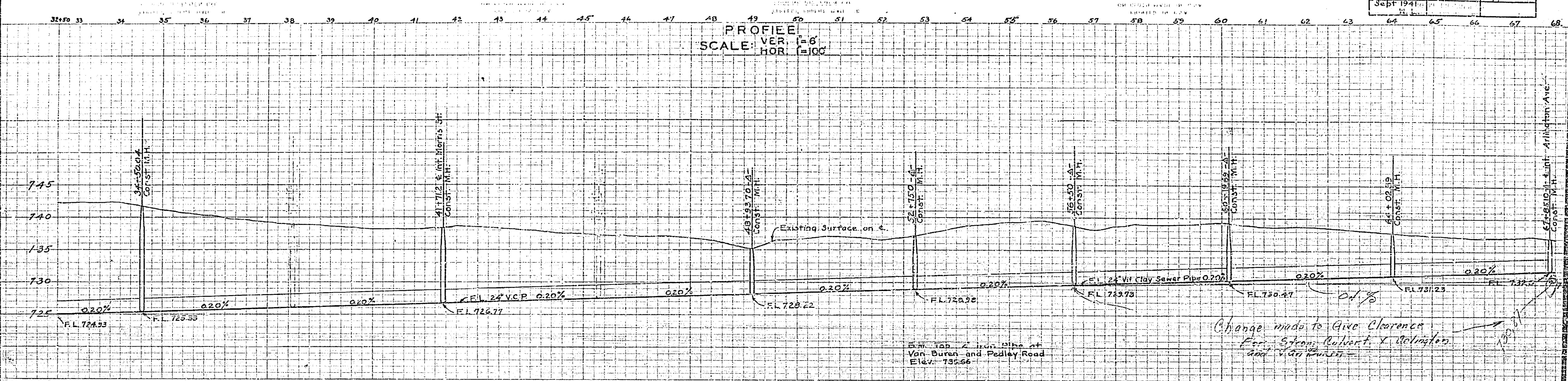
Arlington Outfall Sewer			
Drawing Number	Sheet Number	Total Sheets	Field Books
1062	1	7	394
Drawn	Checked	Approved	



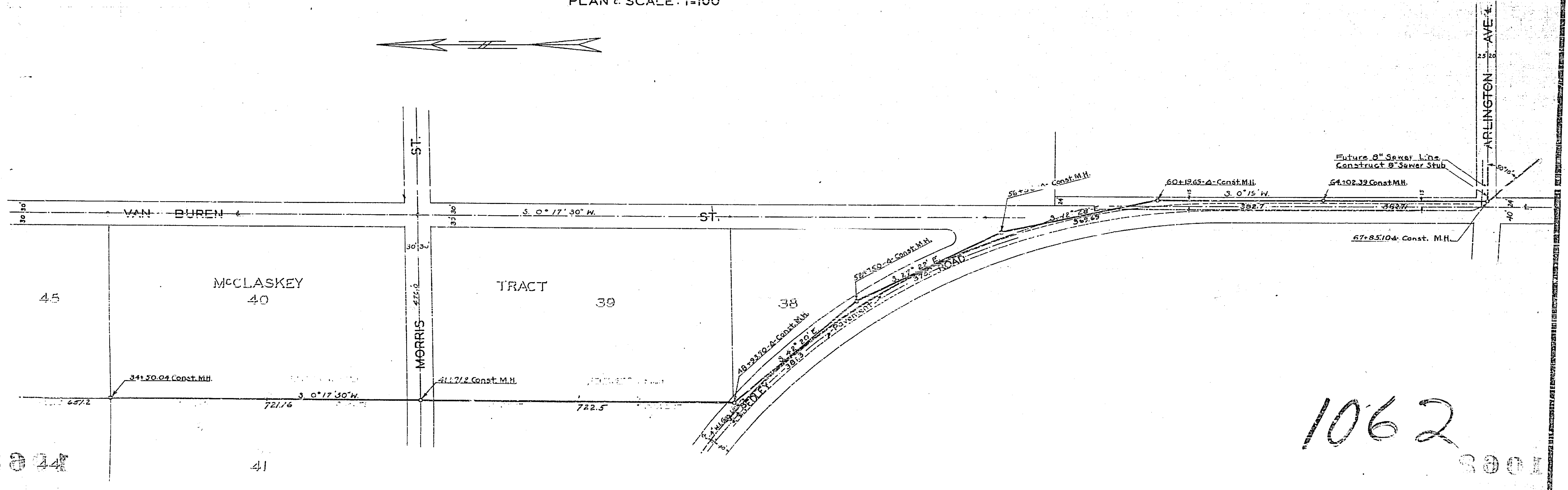
0001

1062 301

Arlington Outfall Sewer			
Drawing Number	Sheet Number	Total Sheets	Field Book
1062	2	7	1934
Drawn	Checked	Approved	
Sept 1941			



PLAN SCALE: 1"=100'

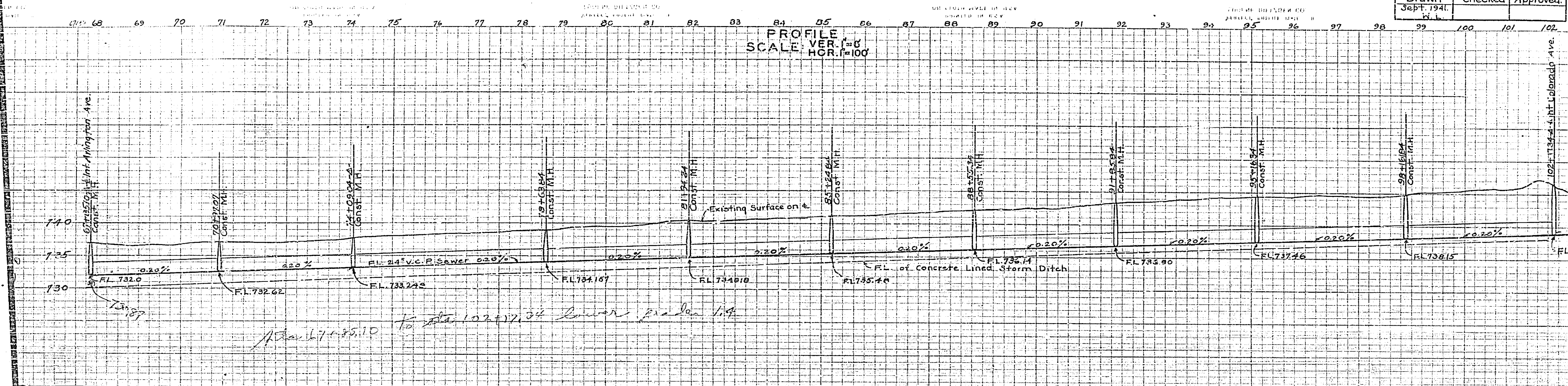


1062

2001

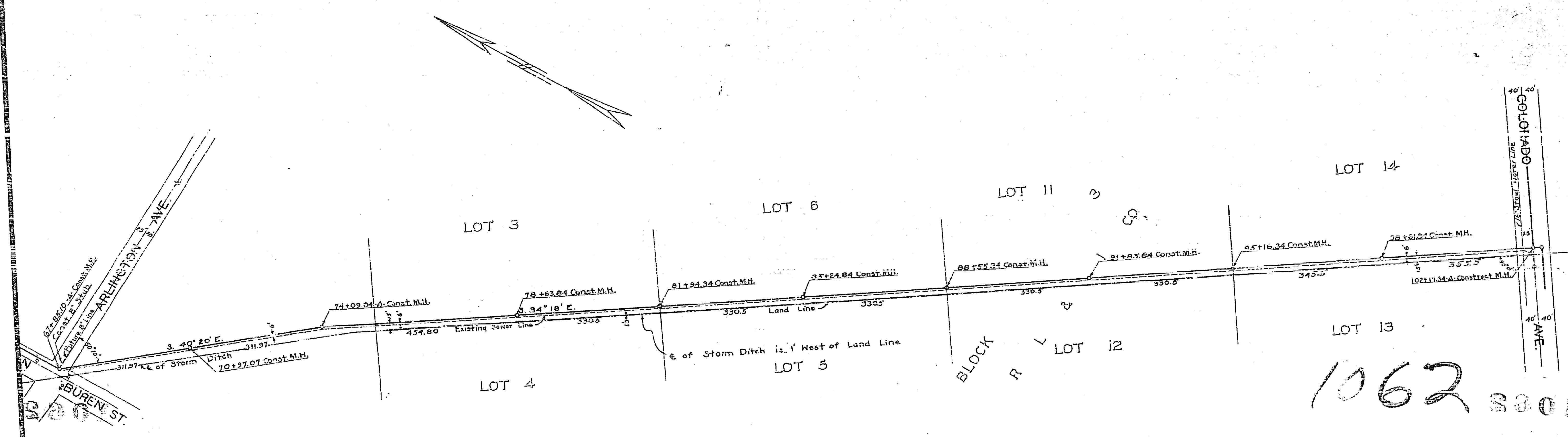
1062

Arlington Outfall Sewer			
Drawing Number	Sheet Number	Total Sheets	Field Books
1062	3	7	394
Drawn	Checked	Approved	
Sept. 1941			



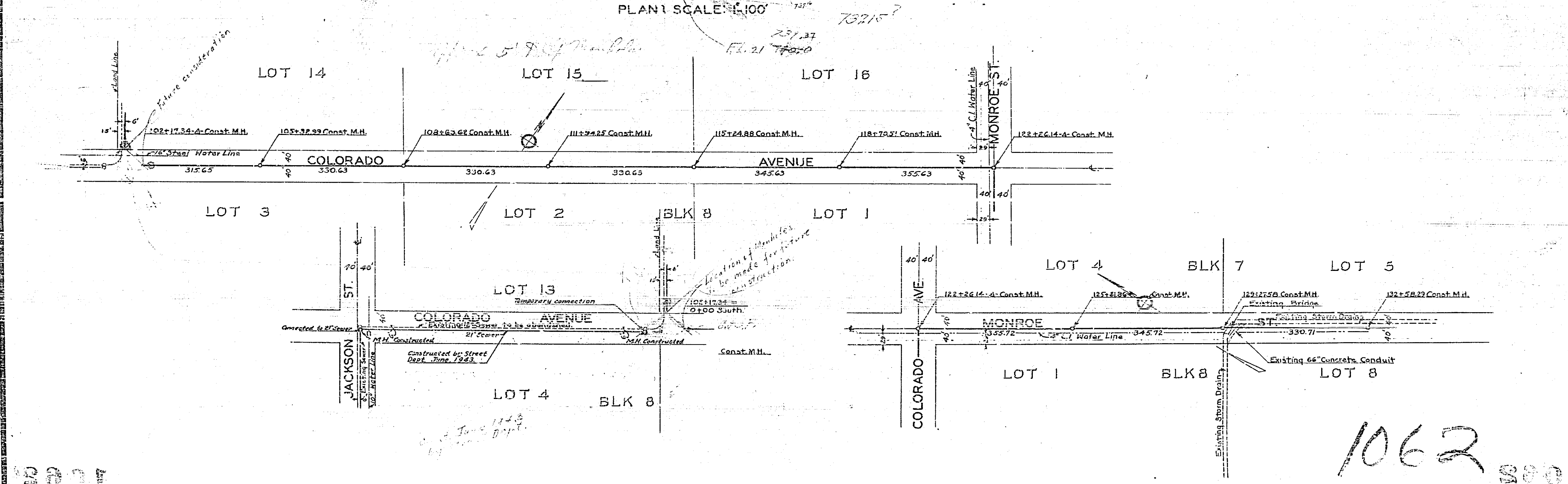
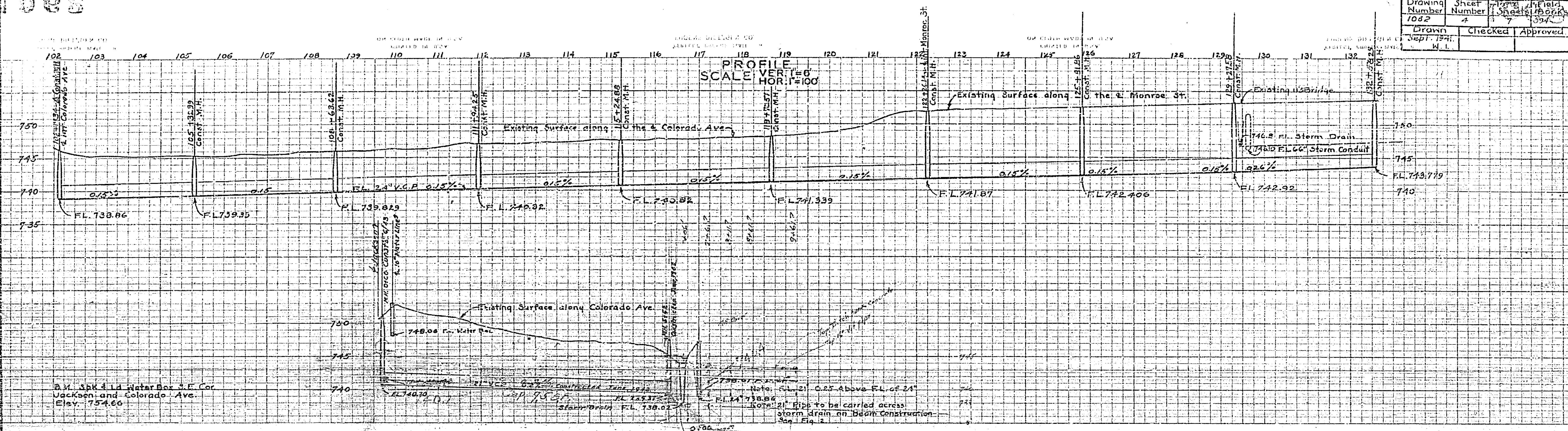
At Sta. 67+35.10 to Sta. 102+17.34 lower grades 1/4"

PLAN SCALE: 1"=100'



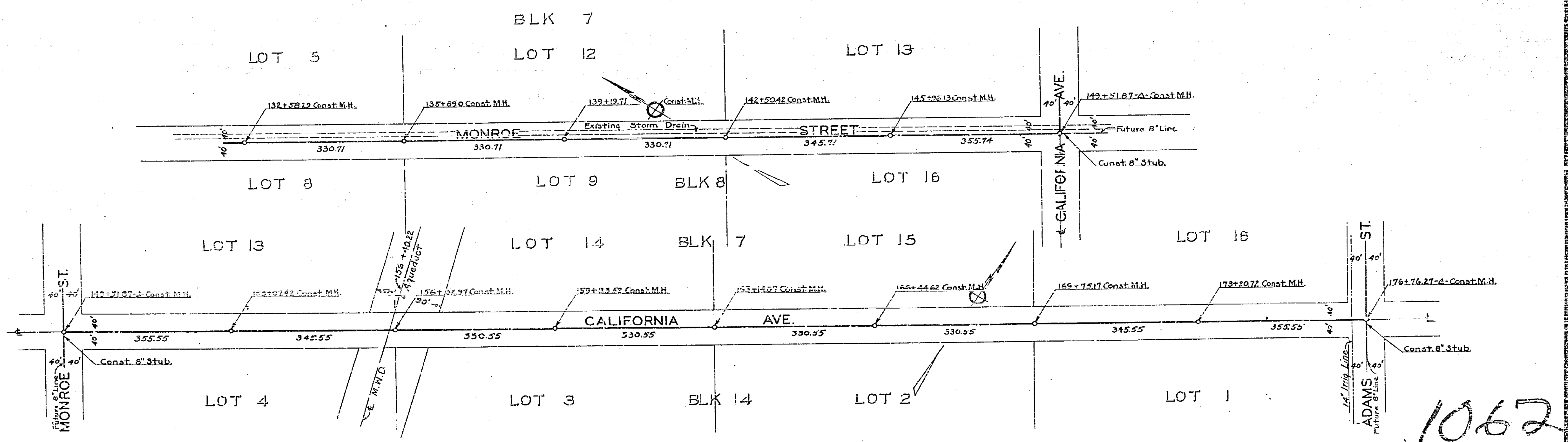
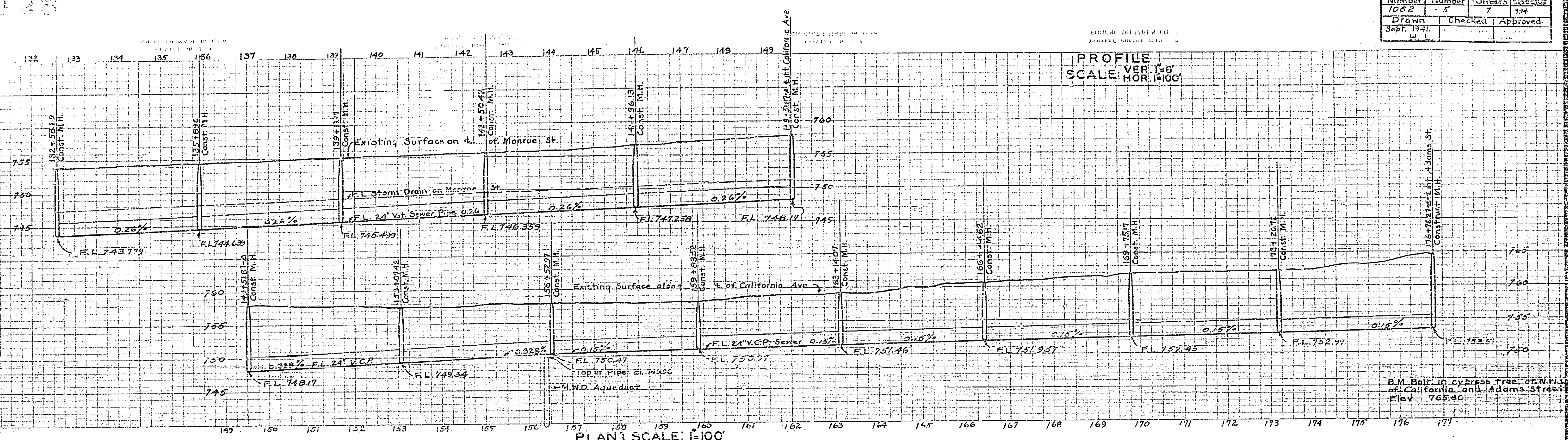
1062 800

Arlington Outfall Sewer			
Drawing Number	Sheet Number	Field	Books
1062	4	17	394
Drawn	Checked	Approved	
Sept. 1943	H. L.		



1062 300

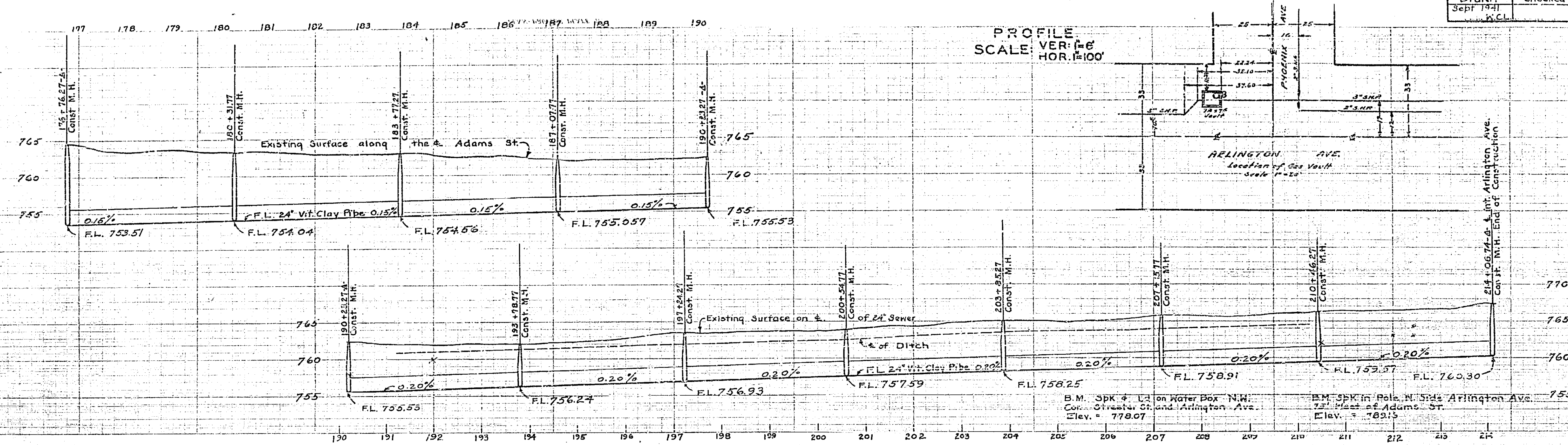
Arlington Outfall Sewer		
Drawing Number	Sheet Number	Total Sheets
1062	5	7
Drawn	Checked	Approved
Sept. 1941	W. I.	



1062
830

1000

Arlington Outfall Sewer			
Drawing Number	Sheet Number	Total Sheets	Field Book No.
1062	6	7	394
Drawn	Checked	Approved	
Sept 1941	WCL		



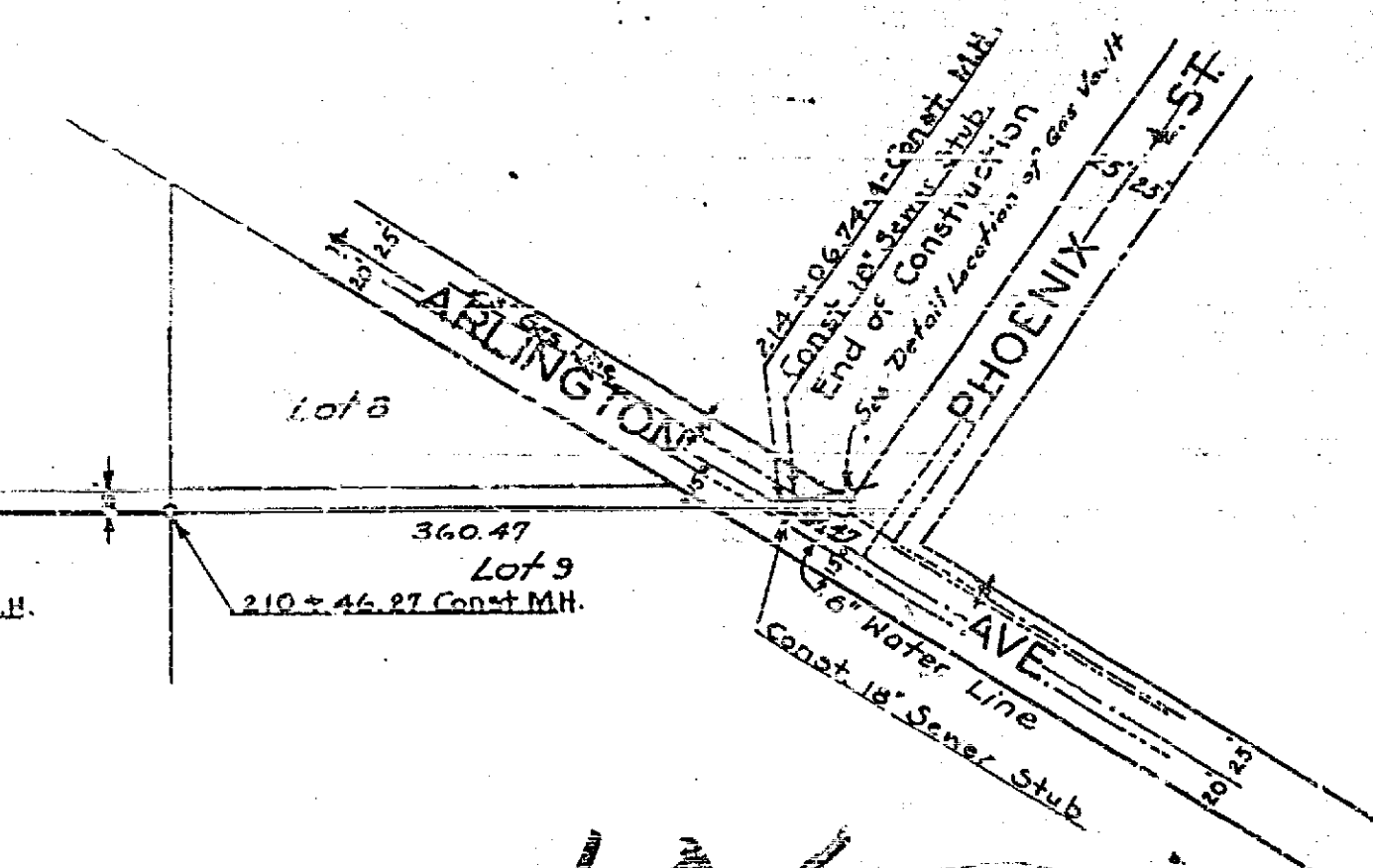
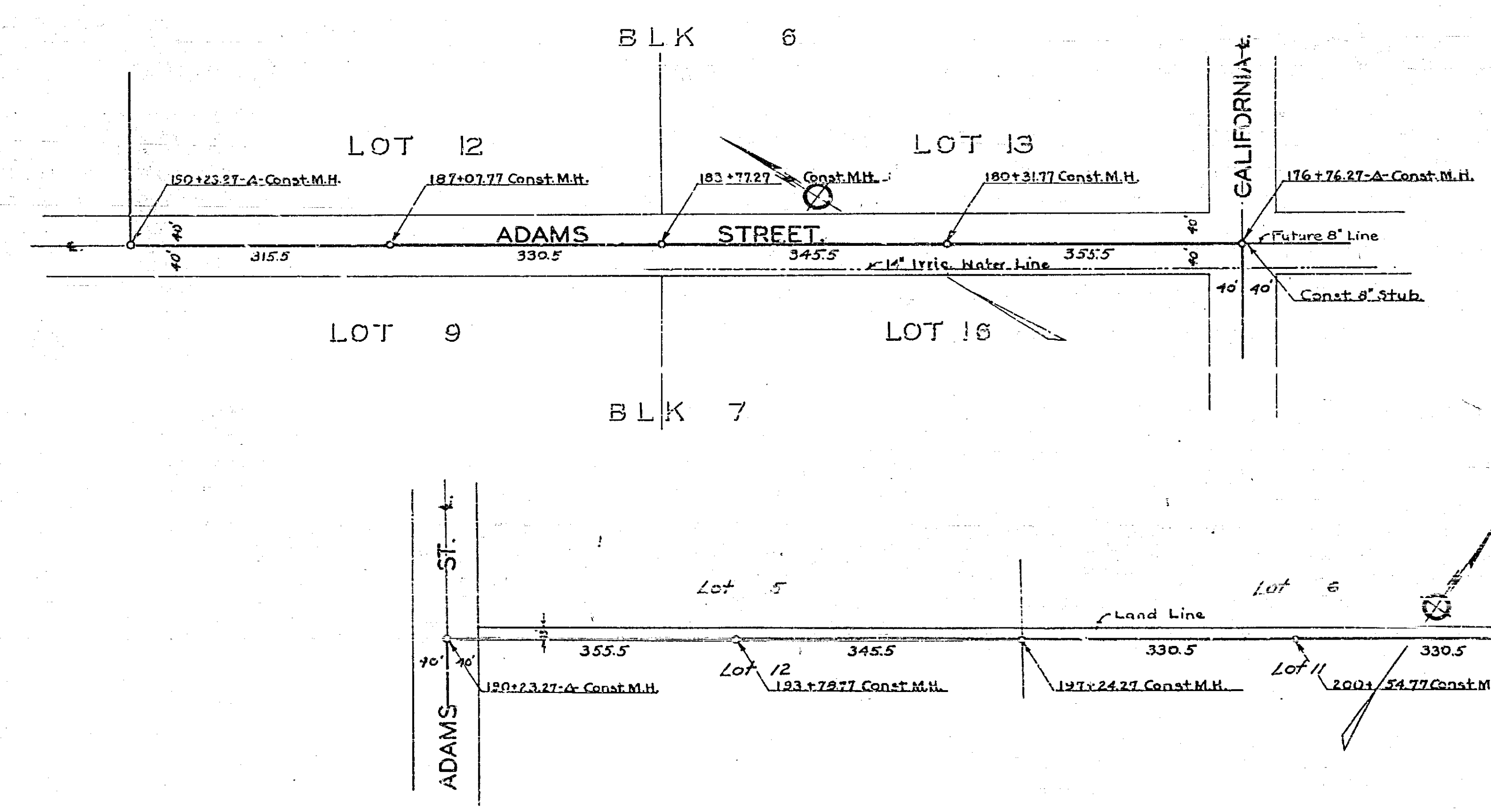
PLANS AND PROFILES OF THE ARLINGTON OUTFALL SEWER

CITY OF RIVERSIDE ENGINEERING DEPARTMENT

APPROVED *E. N. Naylor*
CITY ENGINEER
REG. ENG. NO. 1312.

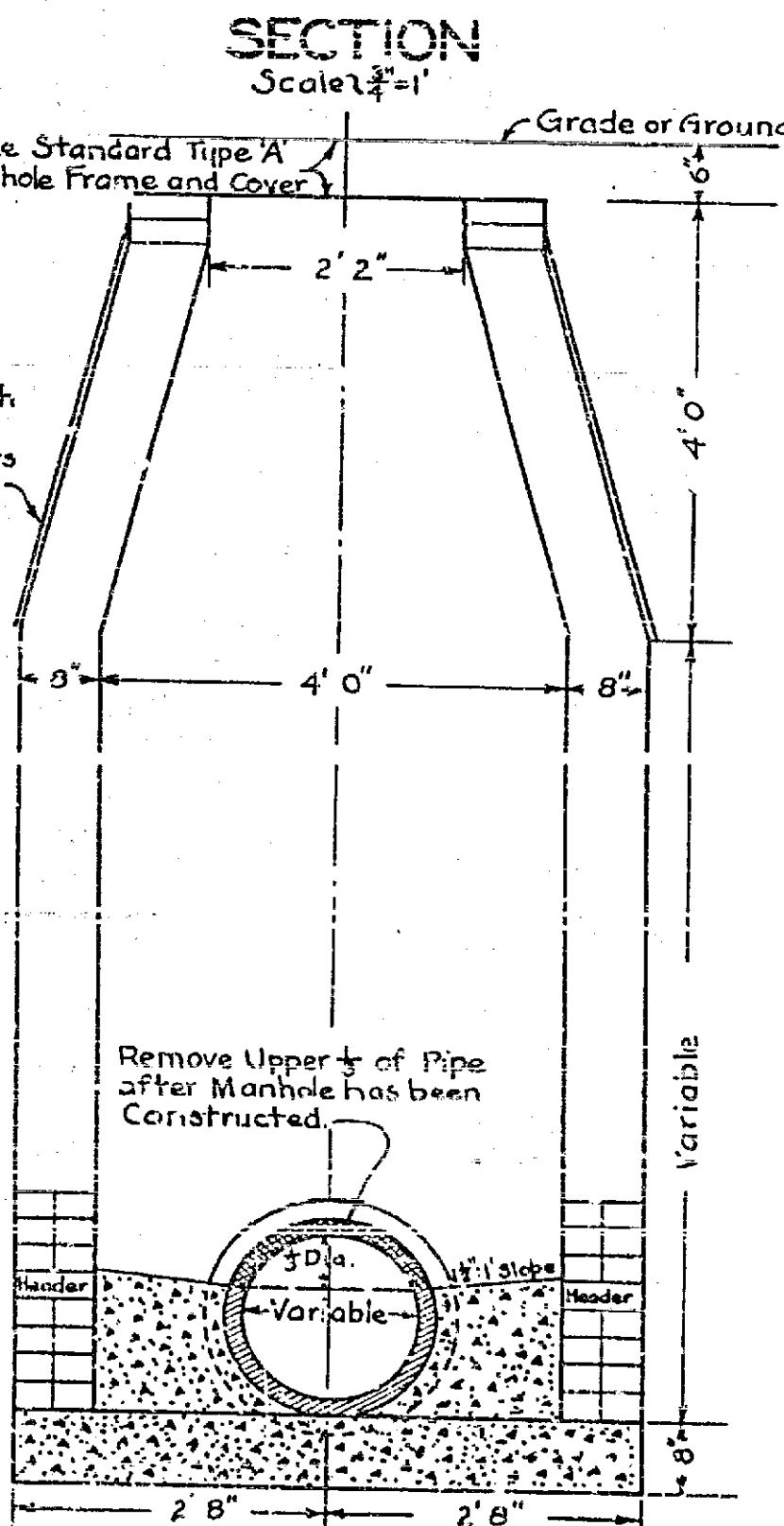
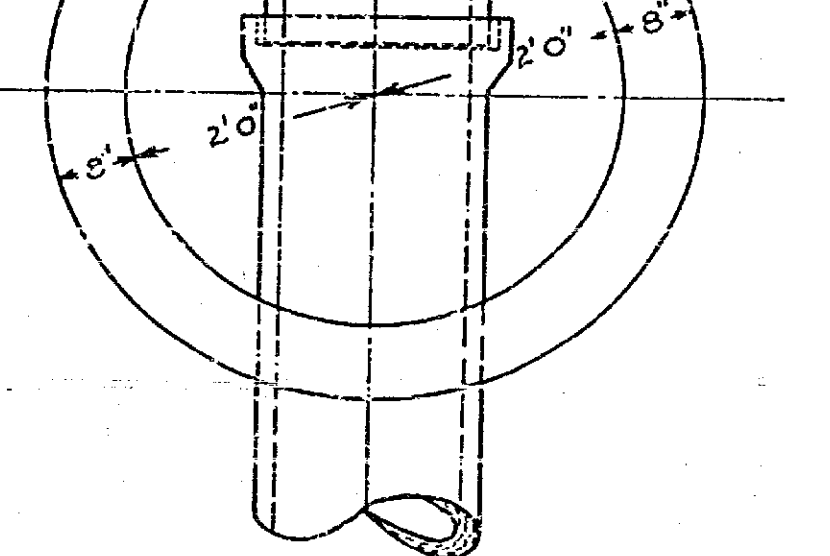
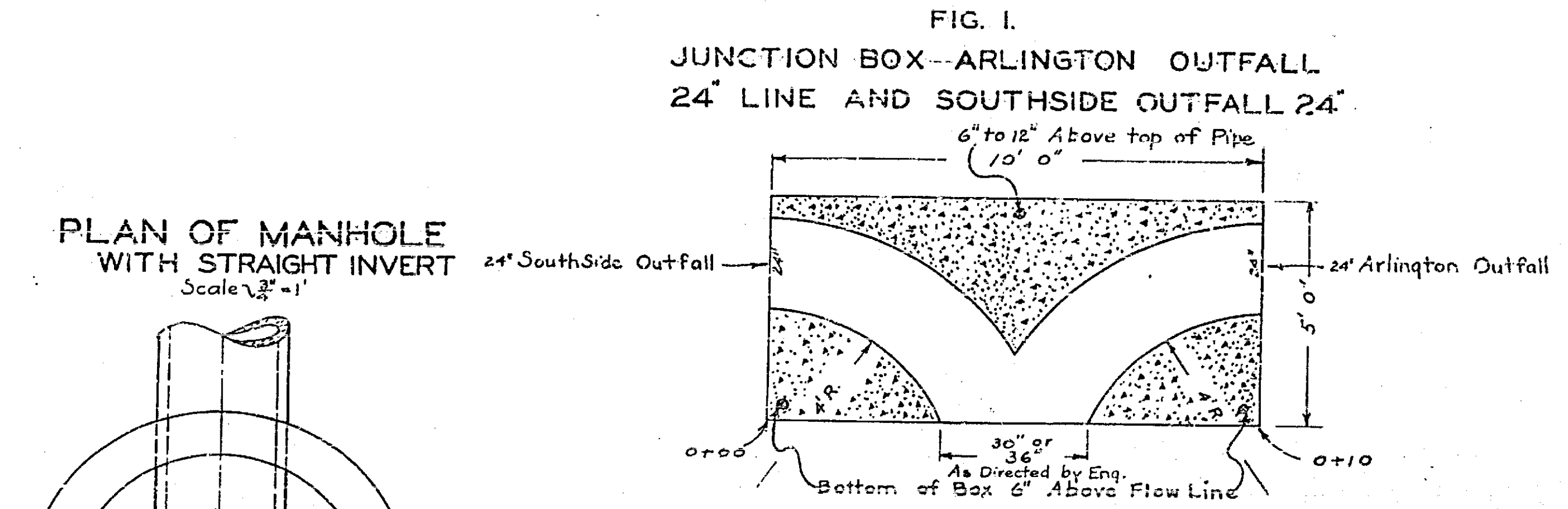
APPROVED AND ADOPTED BY THE MAYOR AND COUNCIL OF THE CITY OF RIVERSIDE THIS 10TH DAY OF SEPT. 1941.

CITY CLERK CITY OF RIVERSIDE

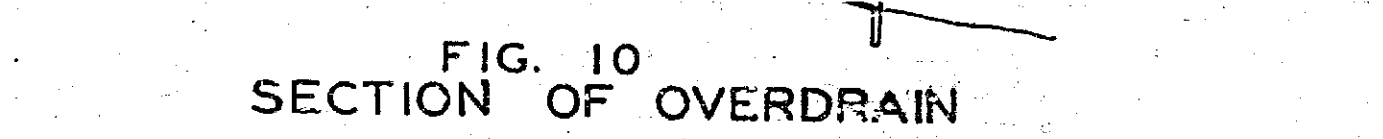
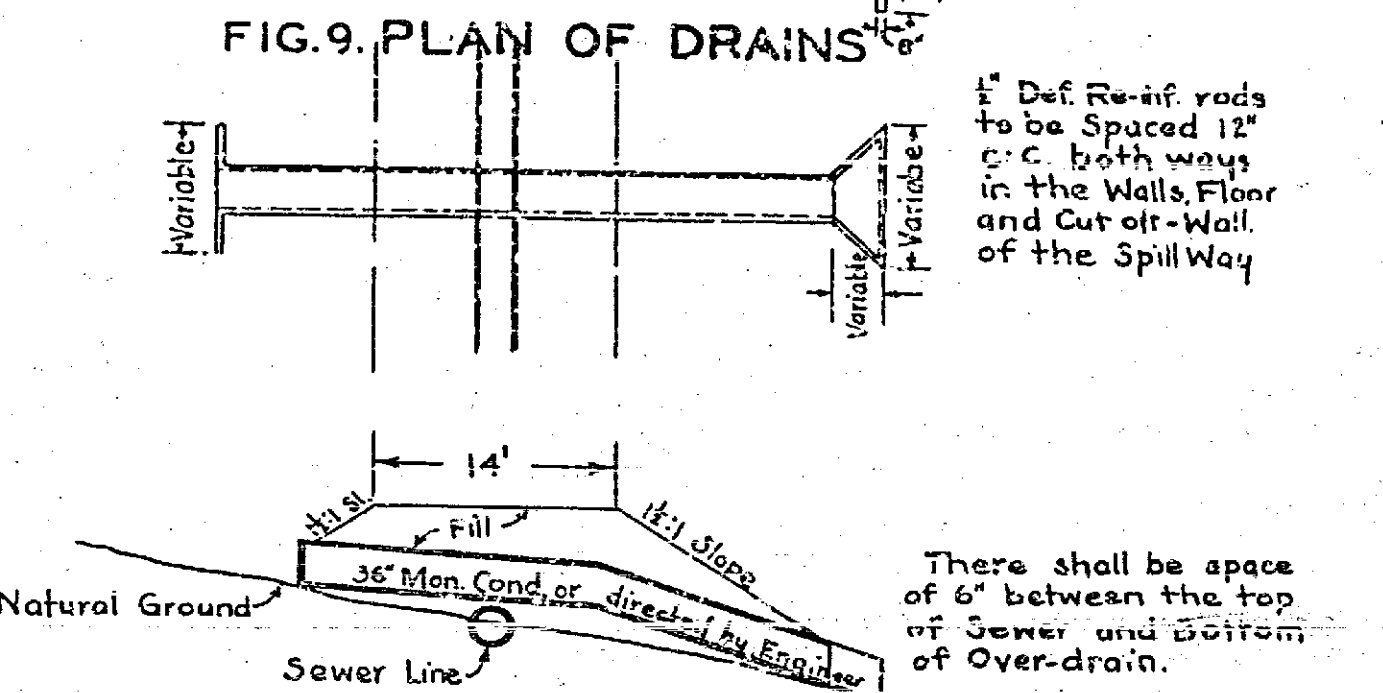
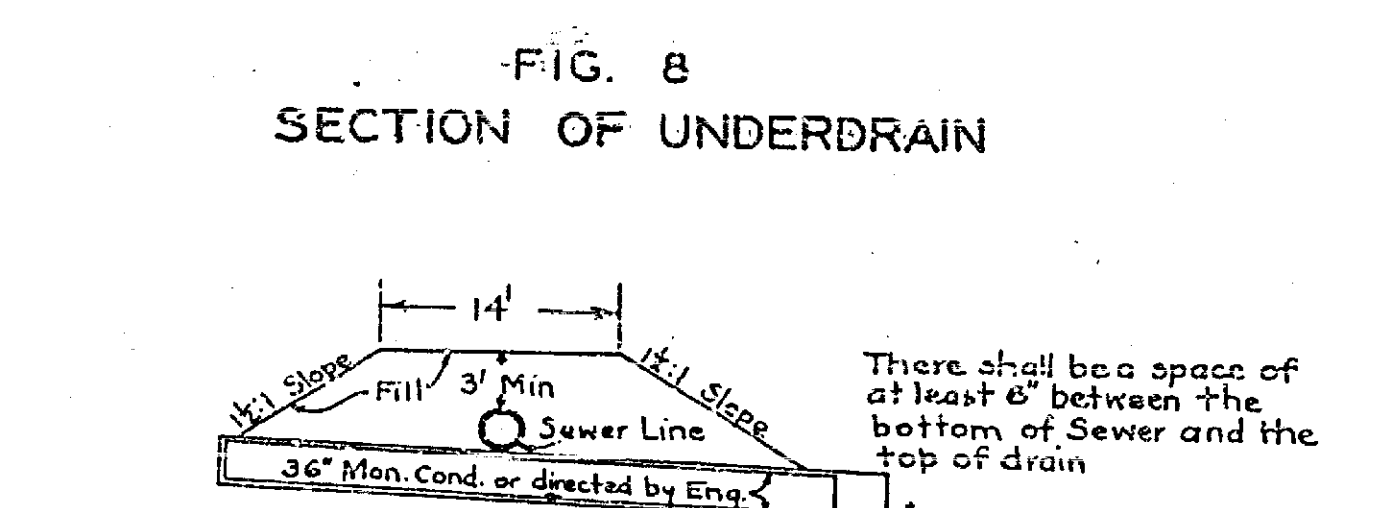
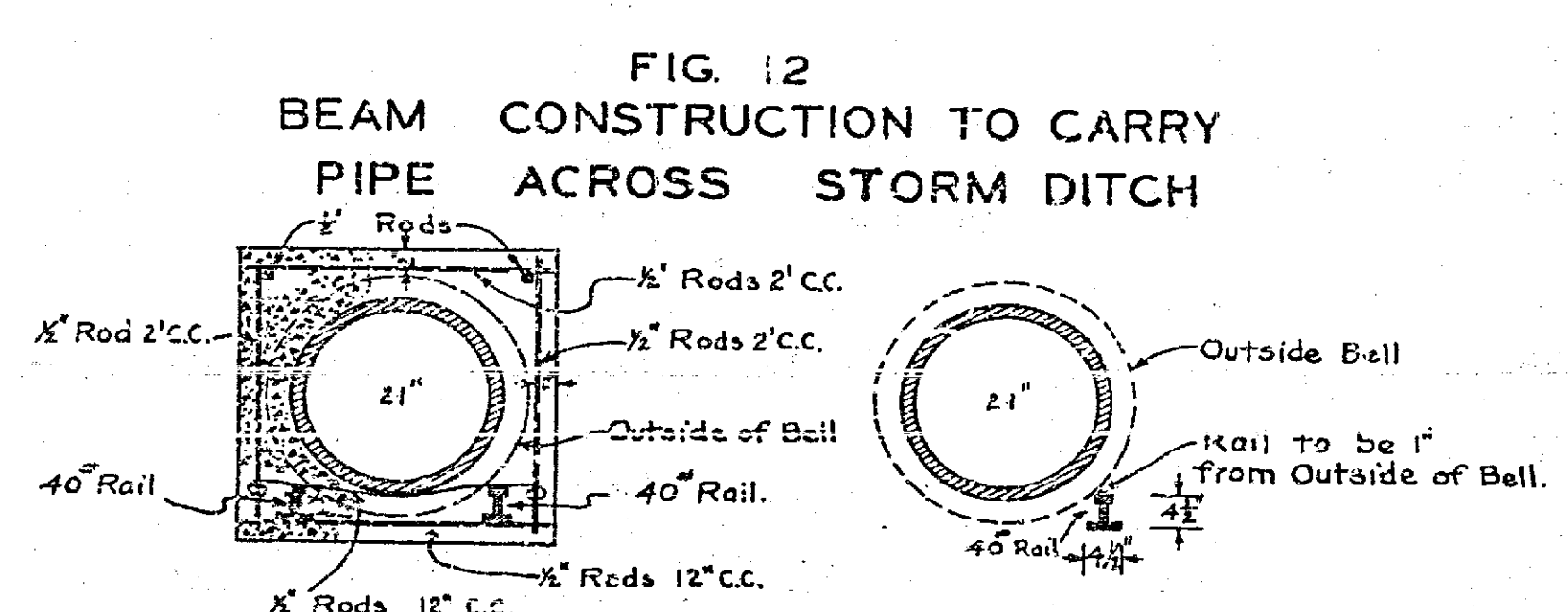


1062 3001

Arlington Outfall Sewer			
Drawing Number	Sheet Number	Total Sheets	Field Books
1062	7	7	394
Drawn by Sept. 1941.		Checked by Approved by	

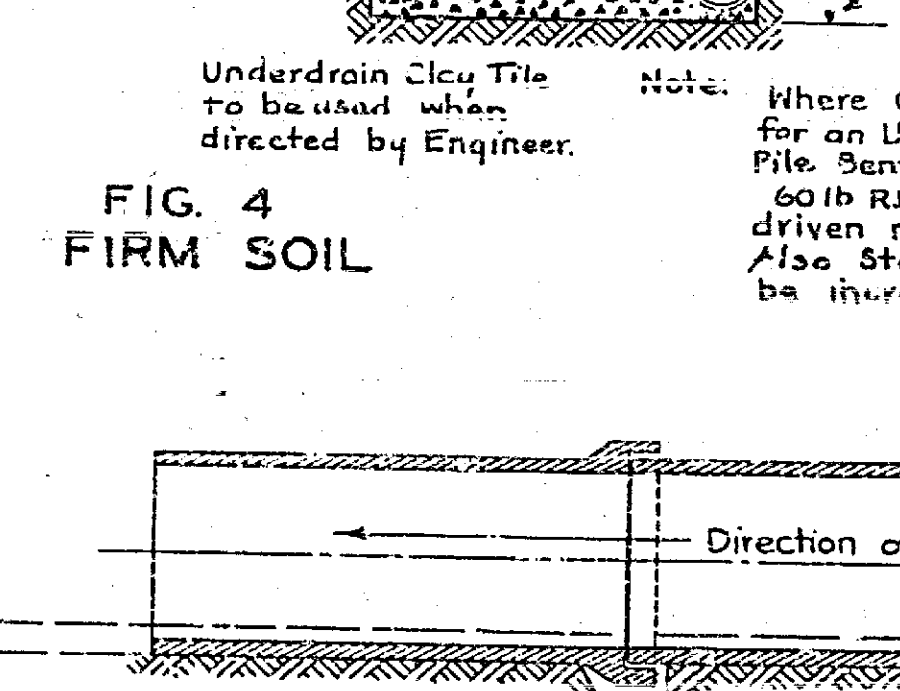
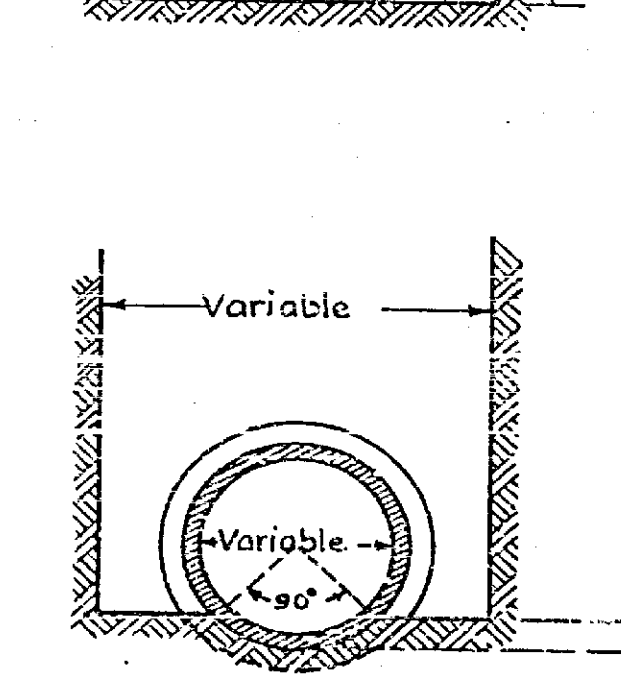
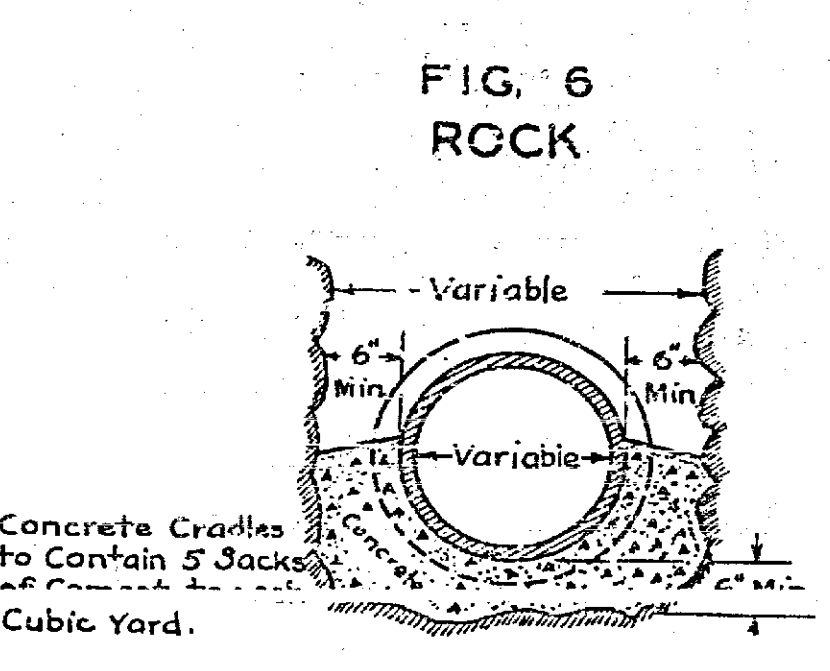
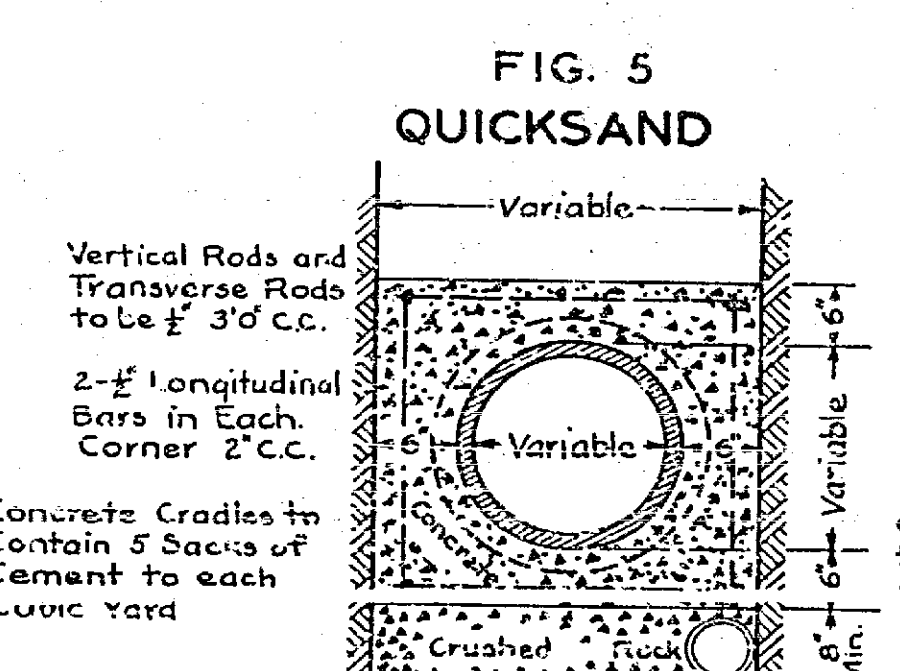
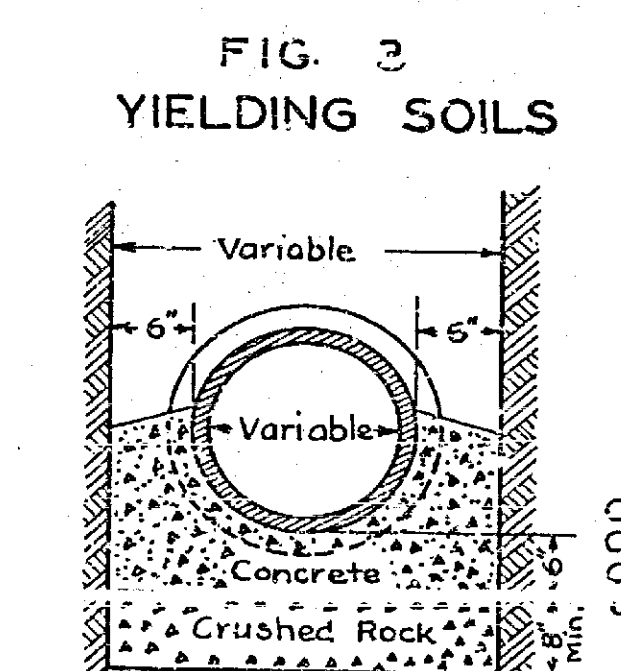


Note:
 1. All Manholes in Wet ground to be Plastered on the Outside from the base to the arch.
 2. Use Standard Common Brick 2 1/2 x 3 1/2 x 8" Every Fifth Course, Mortar to consist of 1 part Cement to 2 1/2 parts of Plaster Sand.
 3. Concrete in Manholes to Contain 6 Sacks of Cement to each Cubic Yard.
 4. Lay Pipe Continuously thru Manholes.
 5. Remove Upper 1/4 of Pipe after Manhole has been Constructed.

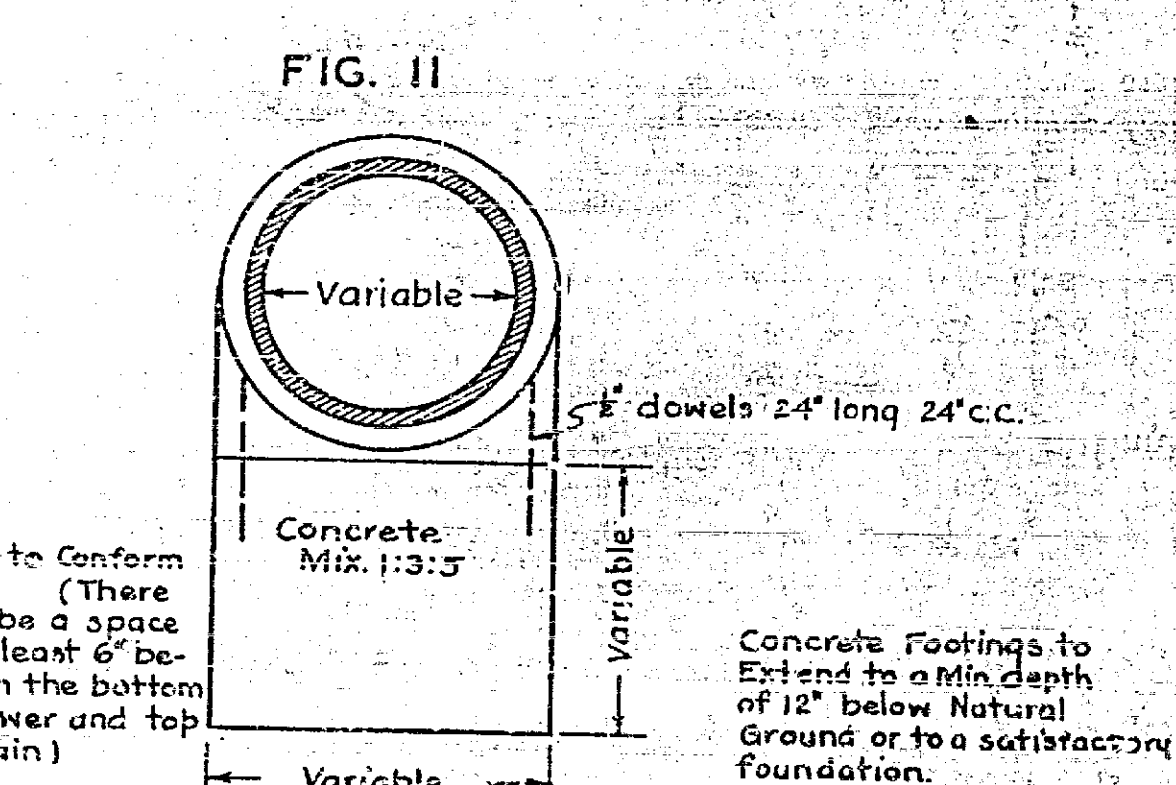


General Notes on Drains
 1. Surface Grads to Drain to Culverts or Concrete Drains at Locations and as directed by City Engineer.
 2. At any point where Sewer Grade is above Natural Ground, Fills shall be made of Gravel or Decomposed Granite and shall be thoroughly Compacted to at least 2' above Grade of Sewer. After Compacting has been done to the Satisfaction of the City Engineer the trench excavation shall be made in the regular manner and pipe laid.
 3. Drains shall not extend beyond the limits of Right-of-Way. In case the height of fill being so high as to extend the toe of slope beyond the limits of R/W, headwalls 10' thick shall be extended up from the end of drains to meet the slope of fills.

METHODS OF LAYING PIPE



Note: Use Standard Strength Vitrified Clay Pipe where Coverage is less than 12 feet Deep. Use Extra Strength Vitrified Clay Pipe where Coverage is more than 12 feet Deep.



Note: Drains to Conform to Fig. (There shall be a space of at least 6" between the bottom of Sewer and top of drain)
 Concrete Footings to Extend to a Min. depth of 12" below Natural Ground or to a satisfactory foundation.

1062