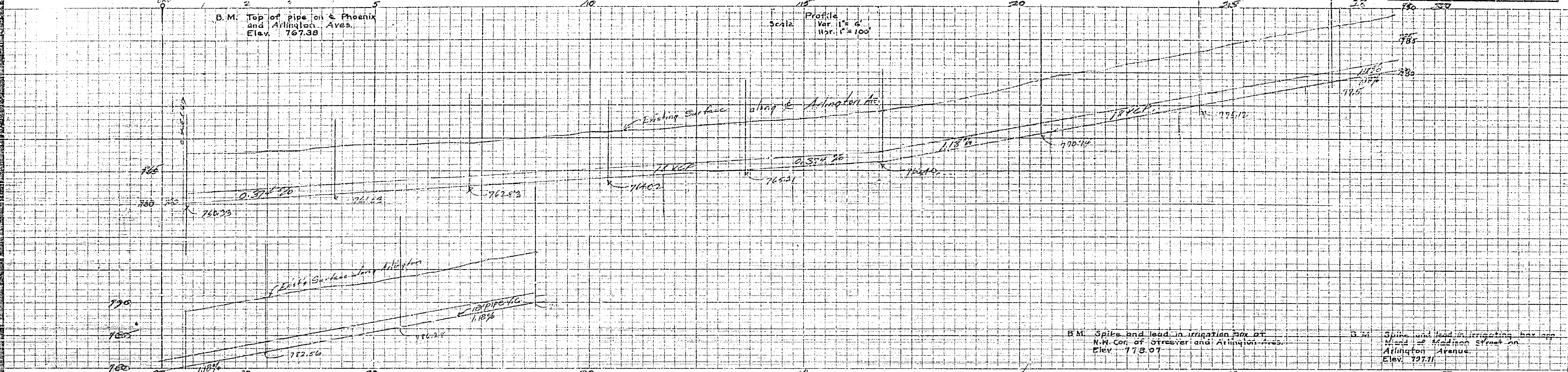


Drawing Number	Sheet Number	Total Sheets	Field Books
1063	0	1	
Drawn	Checked	Approved	

B.M. Top of pipe on Phoenix and Arlington Aves.
Elev. 767.38

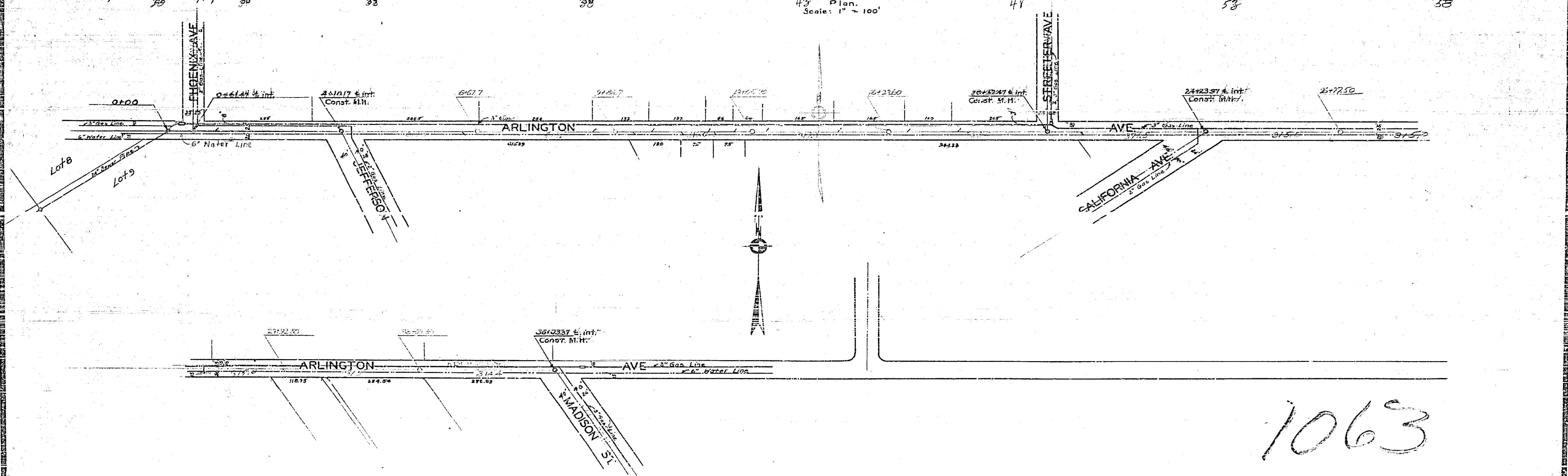
Profile
Scale: Var. 1" = 6'
Hor. 1" = 100'



B.M. Spike and lead in irrigation box at N.W. Cor. of Otseway and Arlington Aves.
Elev. 778.07

B.M. Spike and lead in irrigation box at W. End of Madison Street on Arlington Avenue.
Elev. 777.11

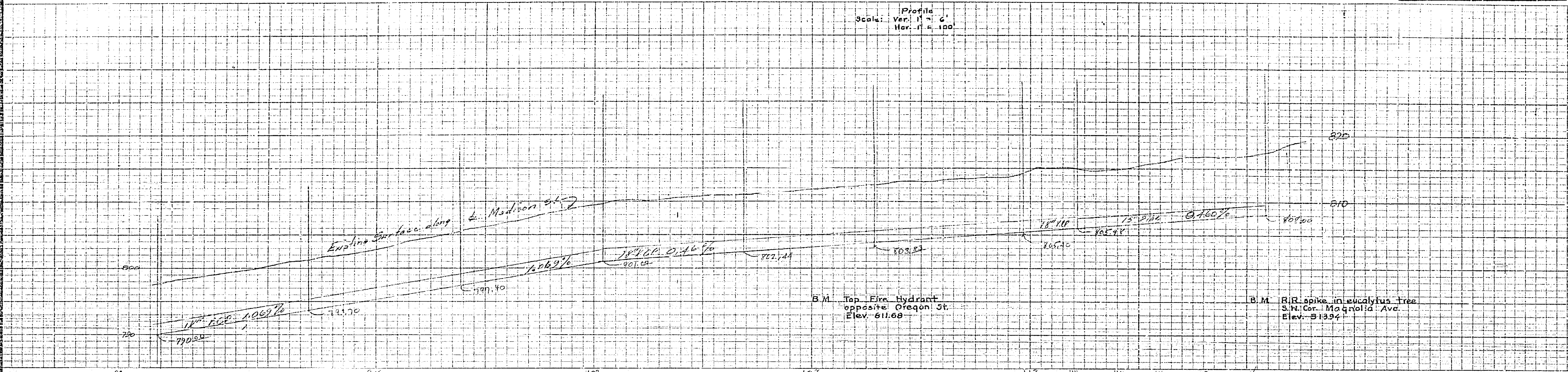
Plan
Scale: 1" = 100'



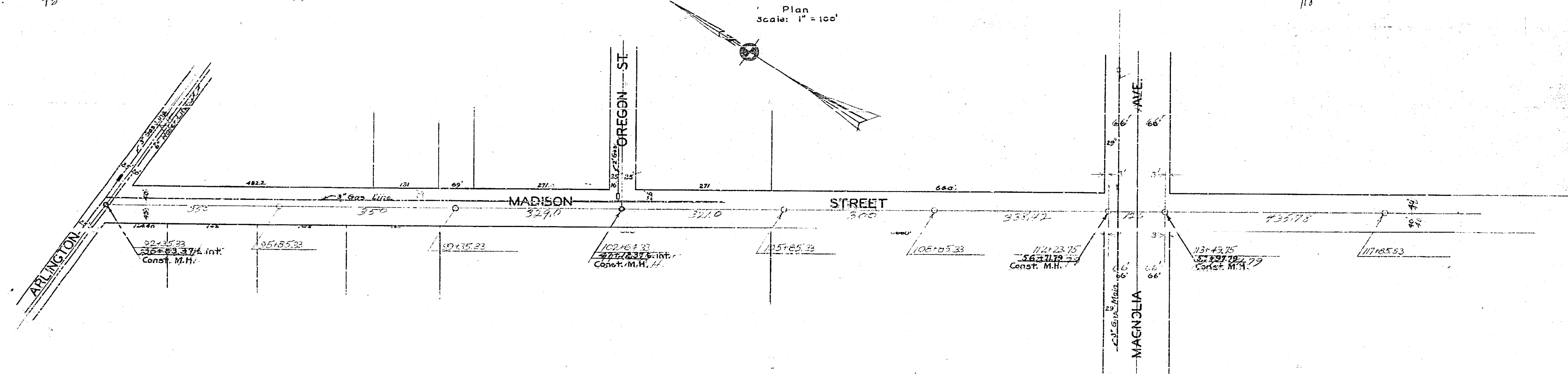
1063

Casa Blanca Trunk Sewer Line			
DRAWING NUMBER	SHEET NUMBER	TOTAL SHEETS	FIELD BOOKS
1063	2	4	
DRAWN BY		CHECKED BY	APPROVED BY
William Lee			

Profile
Scale: Ver. 1" = 6'
Hor. 1" = 100'



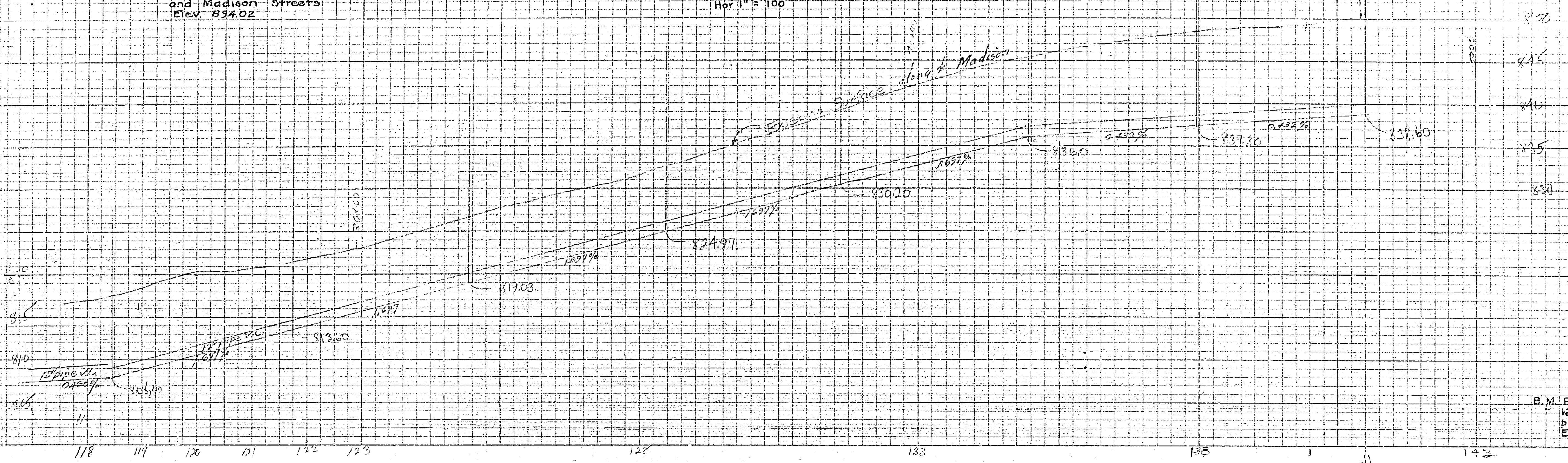
Plan
Scale: 1" = 100'



1063

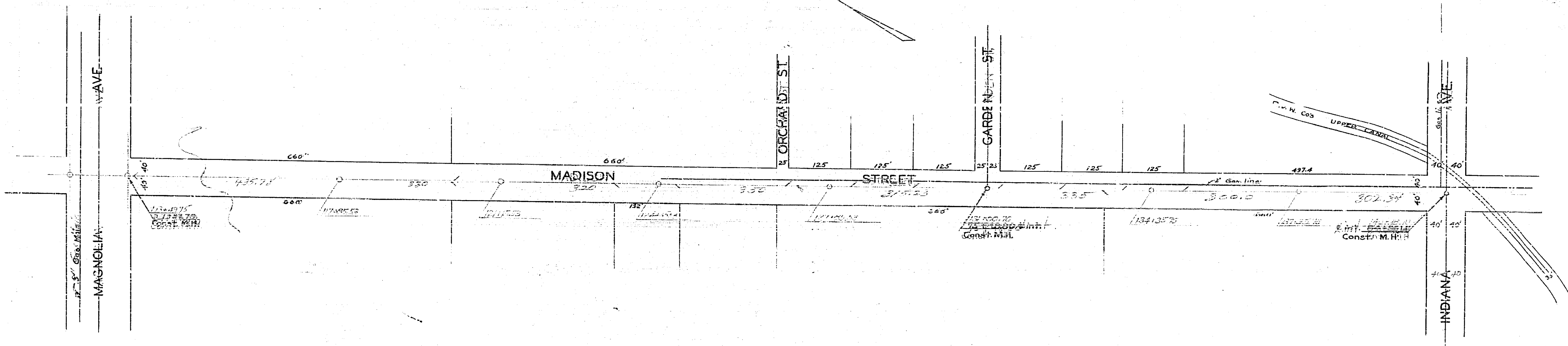
B.M. Top of iron pipe under cap at intersection of Lincoln and Madison Streets. Elev. 894.02

Profile
Scale: Ver 1" = 6'
Hor 1" = 100'



B.M. R.R. spike in eucalyptus tree West side of Madison St. opp. S. prop. line of Garden St. Elev. 840.32

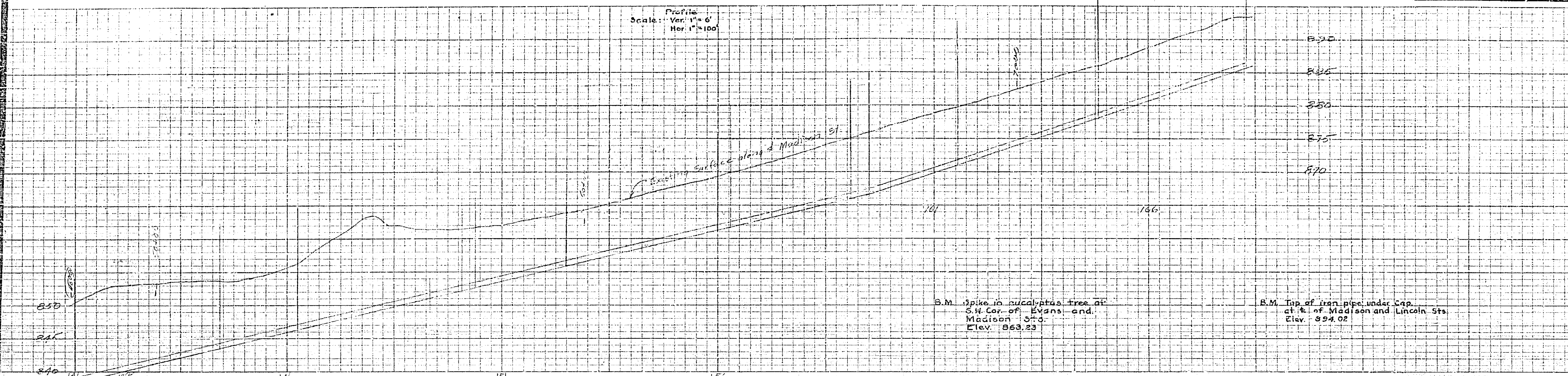
Plan.
Scale: 1" = 100'



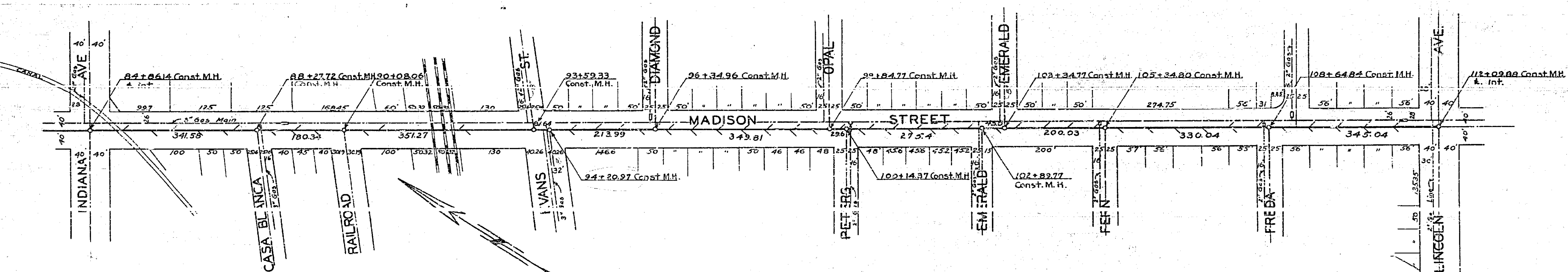
1063

Casa Blanca Trunk Sewer Line			
DRAWING NUMBER	SHEET NUMBER	TOTAL SHEETS	FIELD BOOKS
1063	1	1	
DRAWN BY	CHECKED BY	APPROVED BY	
W. J. Lee			

Profile
Scale: Ver. 1" = 6'
Hor. 1" = 100'



Plan
Scale 1" = 100'



PLANS AND PROFILES
CASA BLANCA TRUNK SEWER LINE
CITY OF RIVERSIDE ENGINEERING DEPT.

APPROVED: _____
CITY ENGINEER

1063

6601