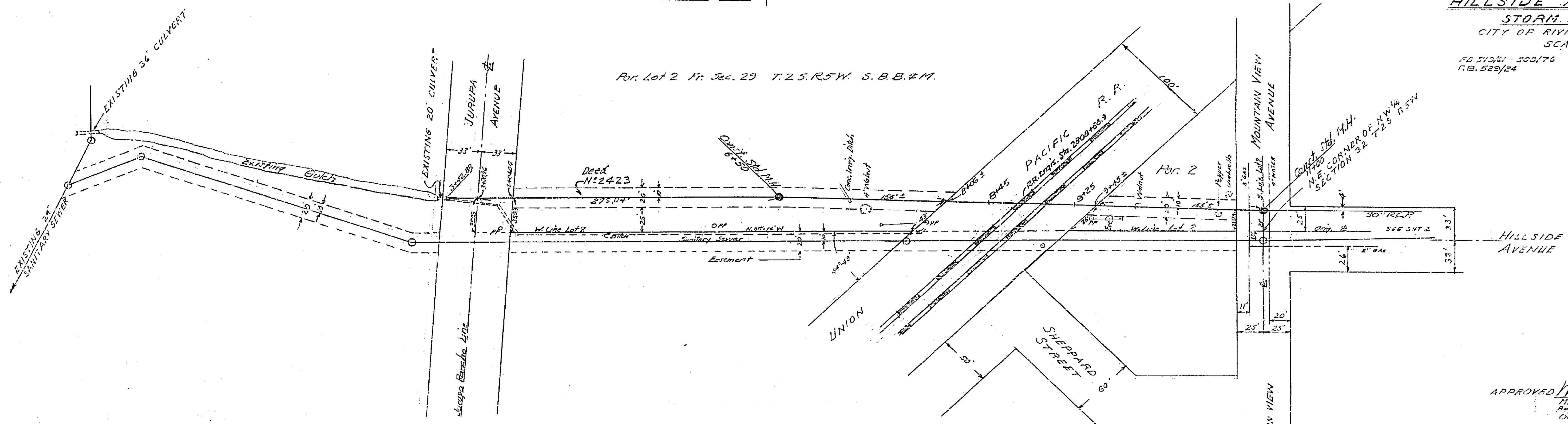
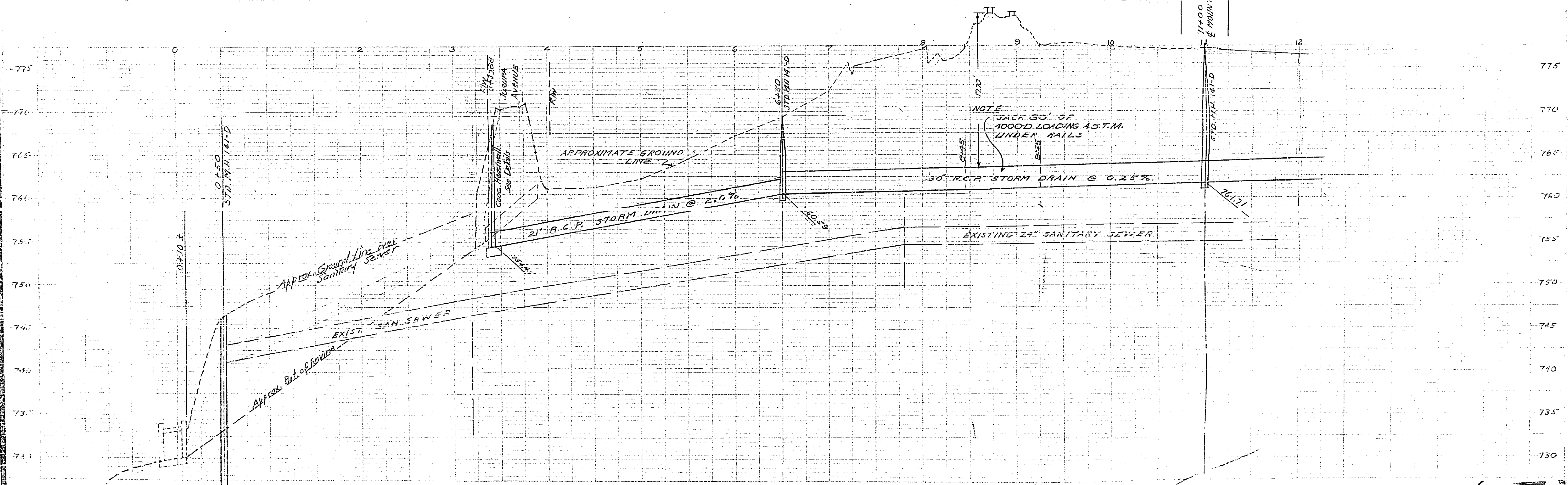


**HILLSIDE AVENUE  
 STORM DRAIN**  
 CITY OF RIVERSIDE, CALIF.  
 SCALL'S  
 FB 513/41 500/176  
 R.B. 529/24  
 HORIZ 1"=50'  
 VERT 1"=5'



Por. Lot 2 Fr. Sec. 29 T.25.R.5W. S.B.B.&M.

APPROVED *M.H. Irvine*  
 M.H. Irvine  
 Reg. C.E. No. 3011  
 City Engineer



1065 D





