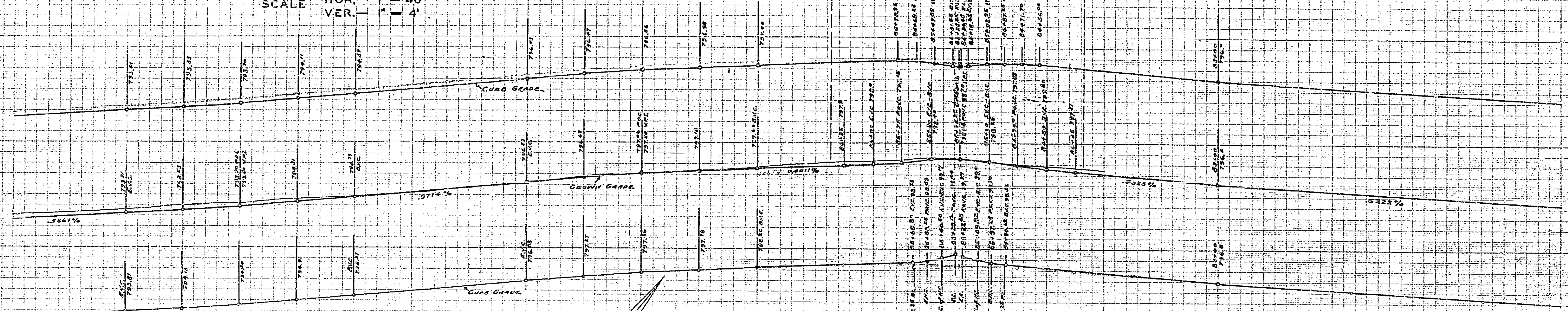


Drawing Number	Sheet Number	Total Sheets	Field Books
1067	1	5	
Drawn: <i>W. J. ...</i>	Checked: <i>...</i>	Approved: <i>...</i>	

This Cross Section applies to south side of South traffic lane. Transition of South side of South traffic lane to normal section North side of South traffic lane.

PROFILE

SCALE HOR. 1" = 40'
VER. 1" = 4'



PLANS AND PROFILES

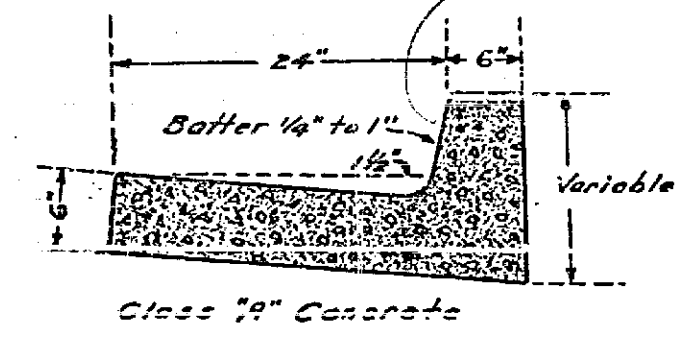
OF IMPROVEMENT ON
NORTH DRIVE
MAGNOLIA AVE.
ADAMS ST. TO CASTLEMAN ST.
ENGINEERING DEPARTMENT RIVERSIDE CALIF.
CITY (U.S.G.S) DATUM PLANE

W. J. ...
CITY ENGINEER
REGISTERED ENGINEER NO. 1312

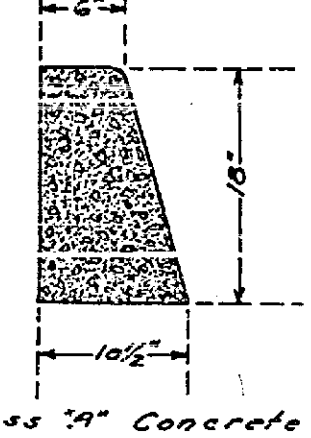
Constructed 1944 Plans corrected 9/6/44

Sheet 2
See Note 9" C.F. (85+25.85)
119+00

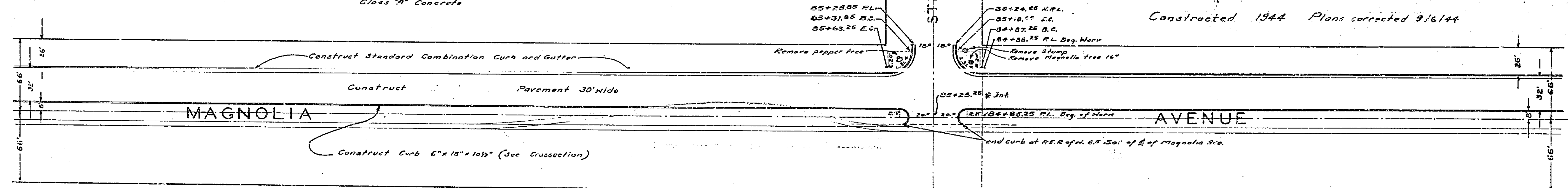
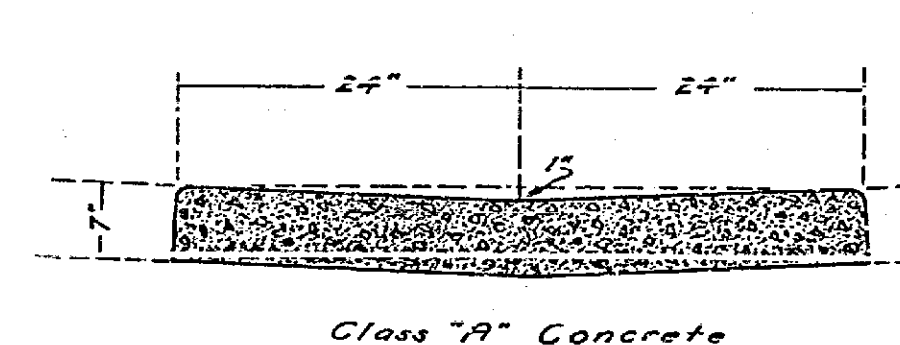
DETAIL ON COMBINATION CURB & GUTTER
Scale 1"=1'



DETAIL CURB
Scale 1"=1'



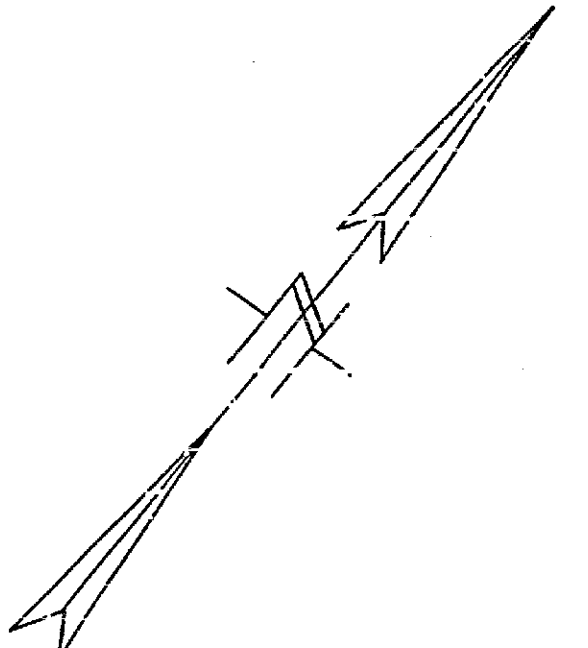
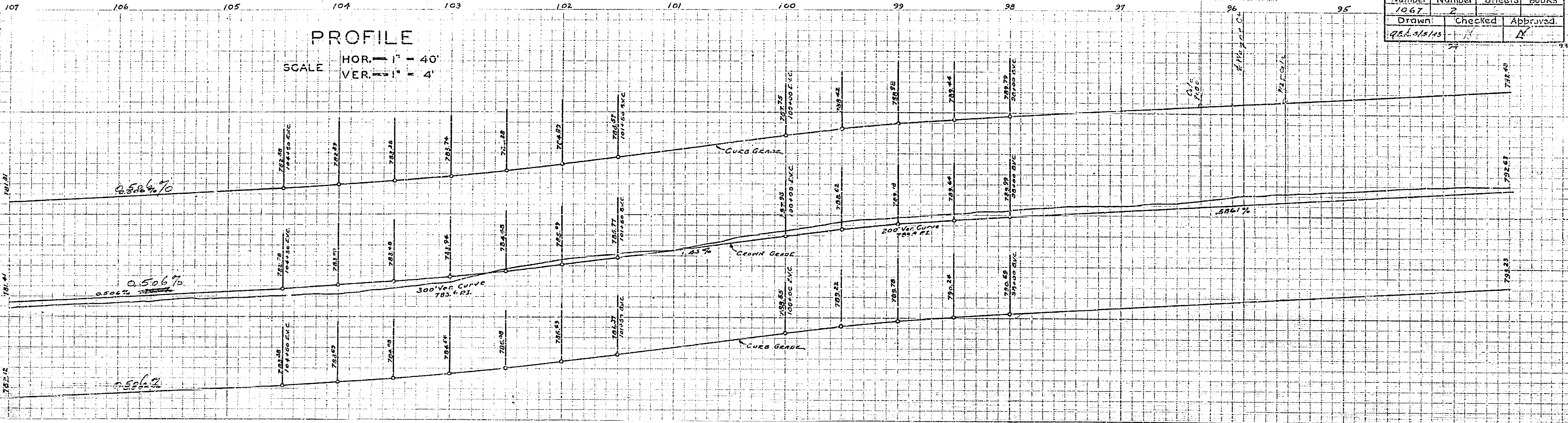
DETAIL DOUBLE GUTTER
Scale 1"=1'



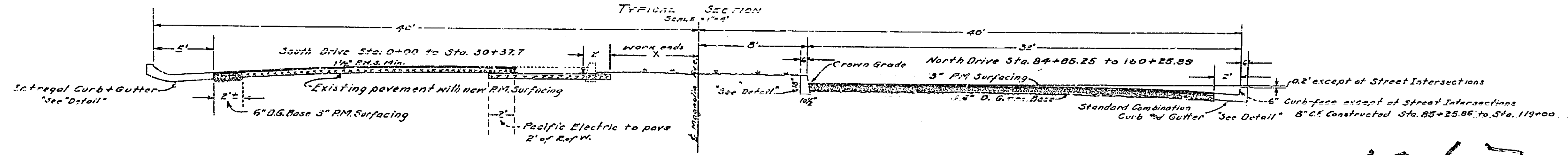
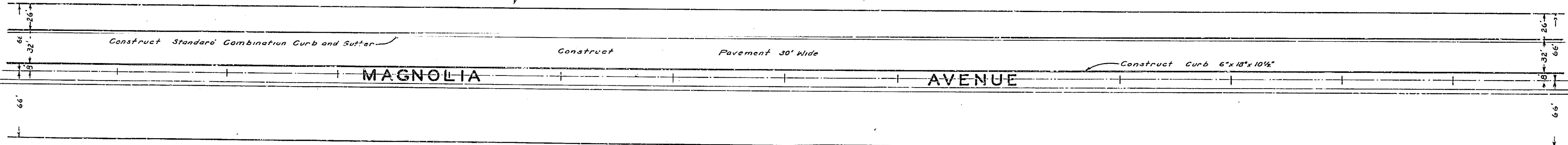
PLAN
SCALE 1" = 40'

1067

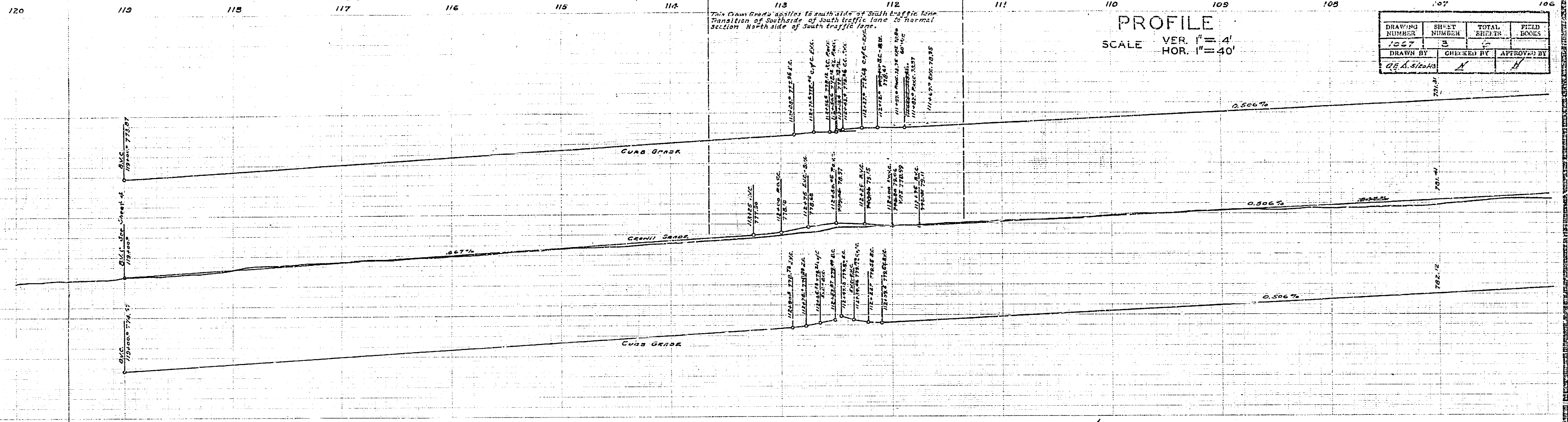
Drawing Number	Sheet Number	Total Sheets	Field Books
1067	2		
Drawn	Checked	Approved	
Q.E.S. 5/15/45		N	



PLAN
SCALE = 1" = 40'

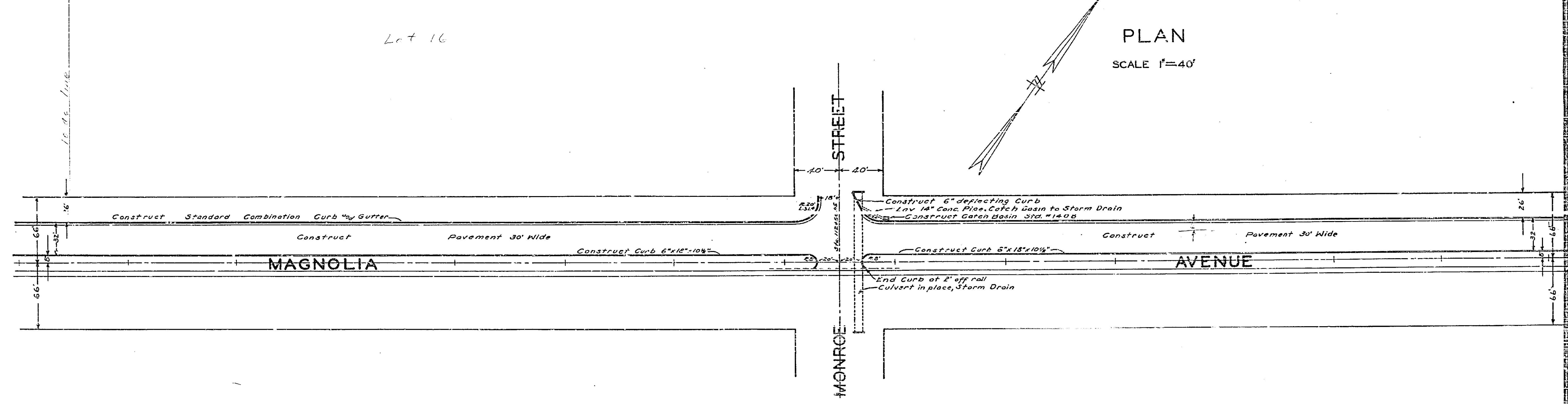


1067



PROFILE
 SCALE VER. 1" = 4'
 HOR. 1" = 40'

DRAWING NUMBER	SHEET NUMBER	TOTAL SHEETS	FIELD BOOKS
1067	3	3	
DRAWN BY G.E.A. SLOAN		CHECKED BY A	APPROVED BY A



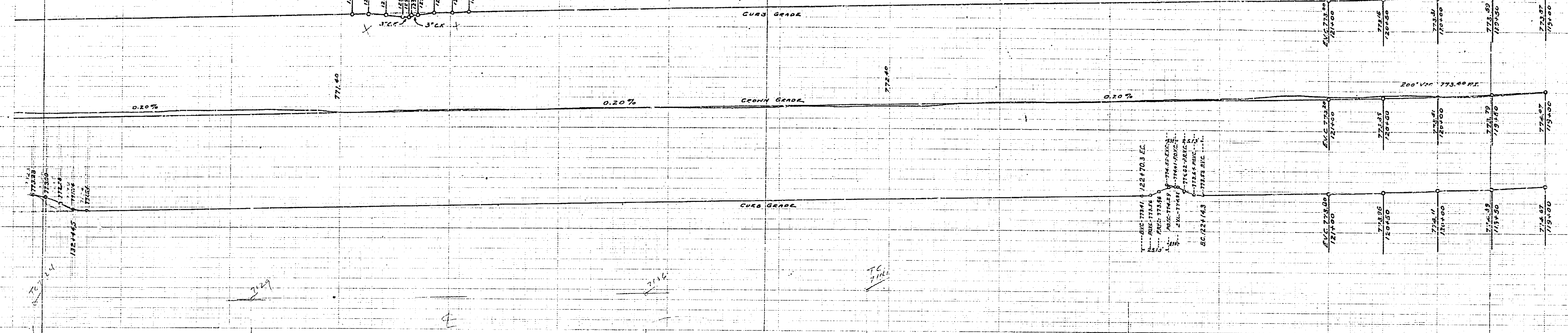
PLAN
 SCALE 1" = 40'

1067

133 132 131 130 129 128 127 126 125 124 123 122 121 120 119

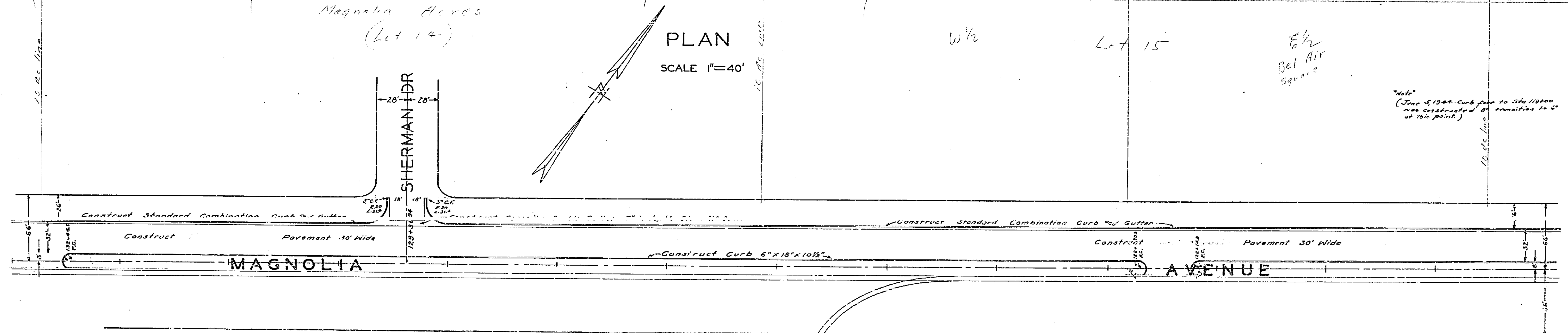
PROFILE
 SCALE VER. 1" = 4'
 HOR. 1" = 40'

DRAWING NUMBER	SHEET NUMBER	TOTAL SHEETS	FIELD BOOKS
1067	4	6	
DRAWN BY D.E. A. 4/24/43		CHECKED BY	APPROVED BY



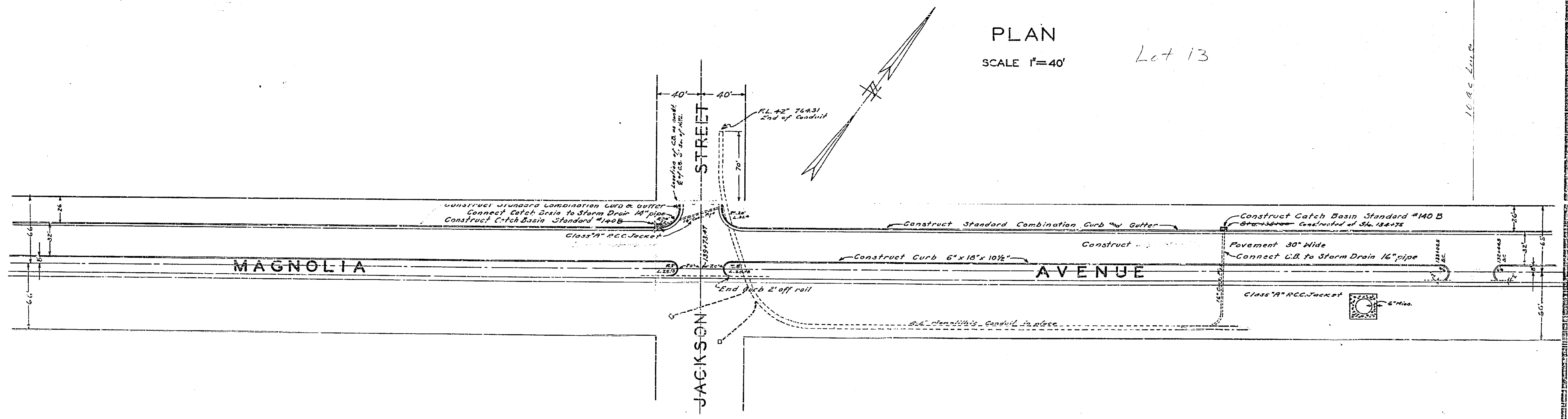
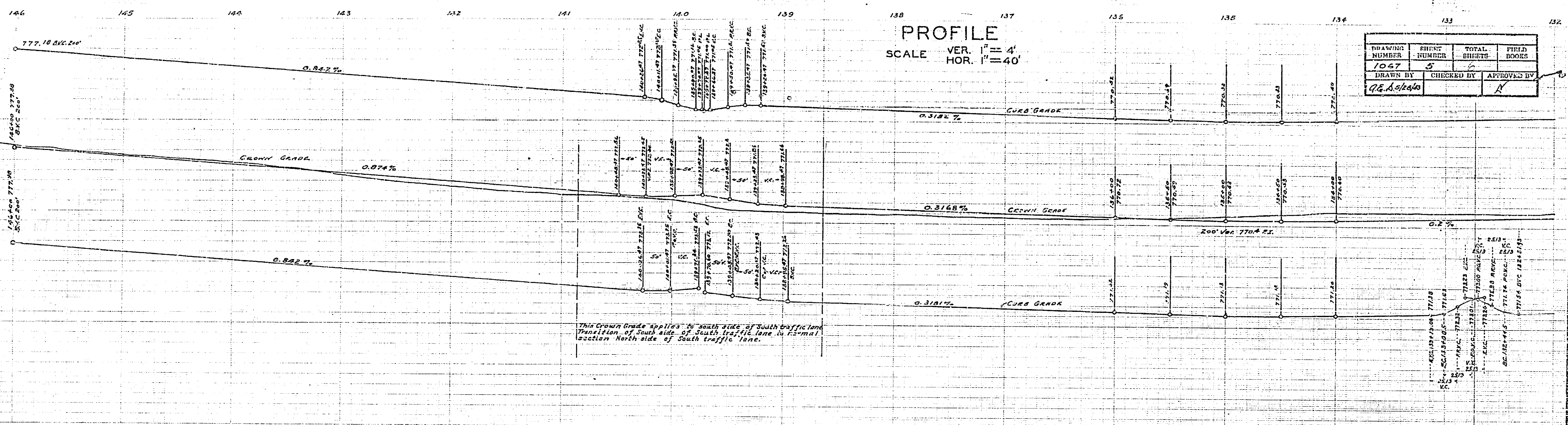
Magnolia Acres
 (Lot 14)

PLAN
 SCALE 1" = 40'



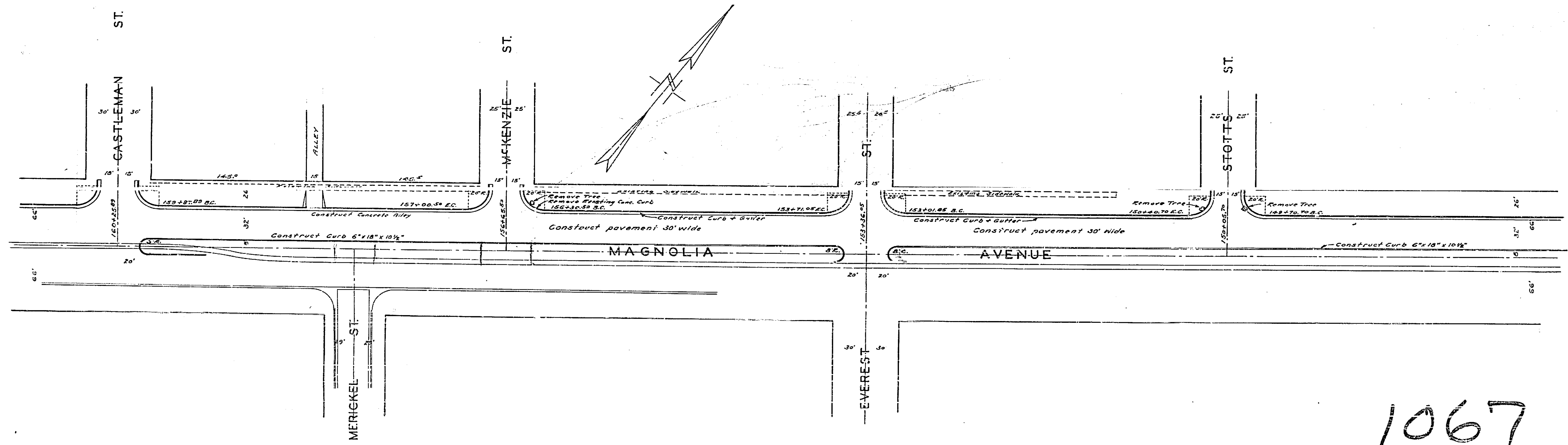
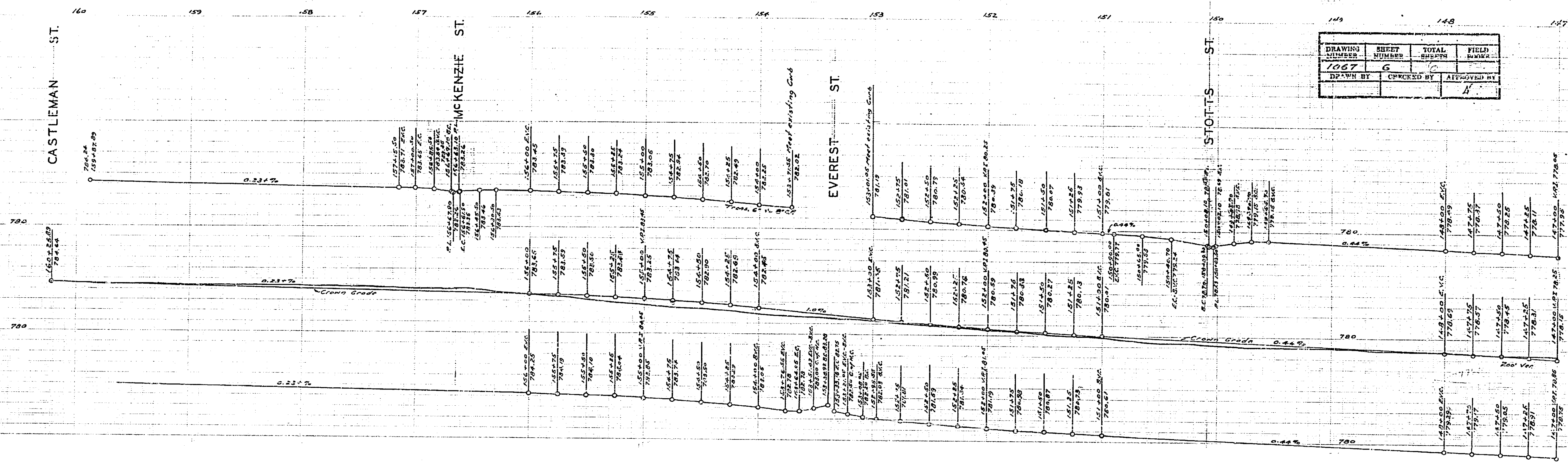
"date"
 (June 5, 1944. Curb put to Sta 119+00
 was constructed by transition to 6"
 at this point.)

1067



1067

DRAWING NUMBER	SHEET NUMBER	TOTAL SHEETS	FIELD MARK
1067	6	6	
DRAWN BY	CHECKED BY	APPROVED BY	
		B	



1067