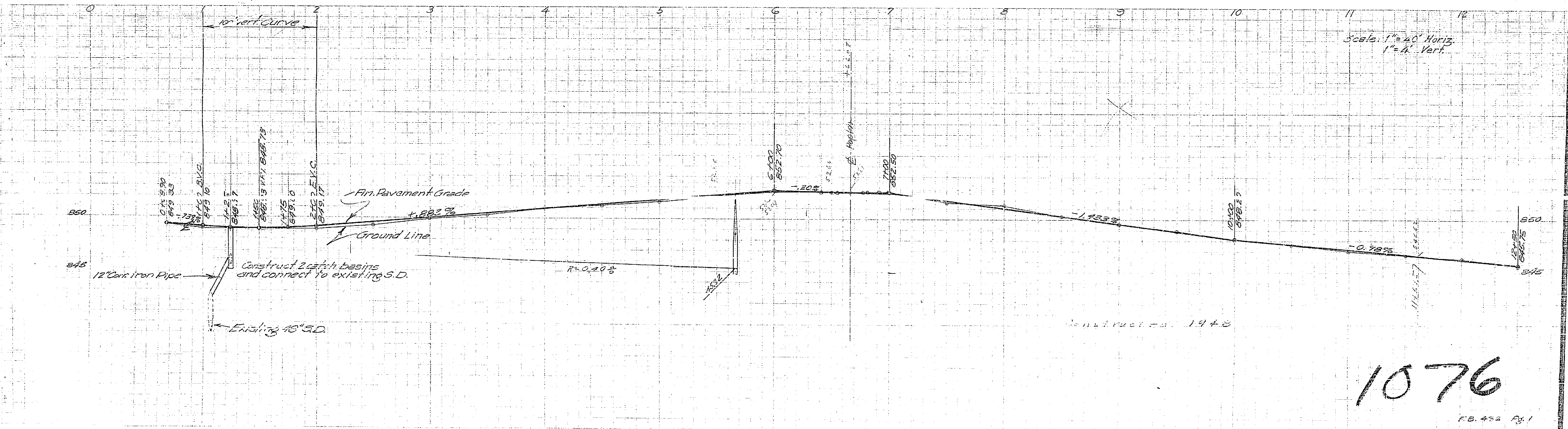
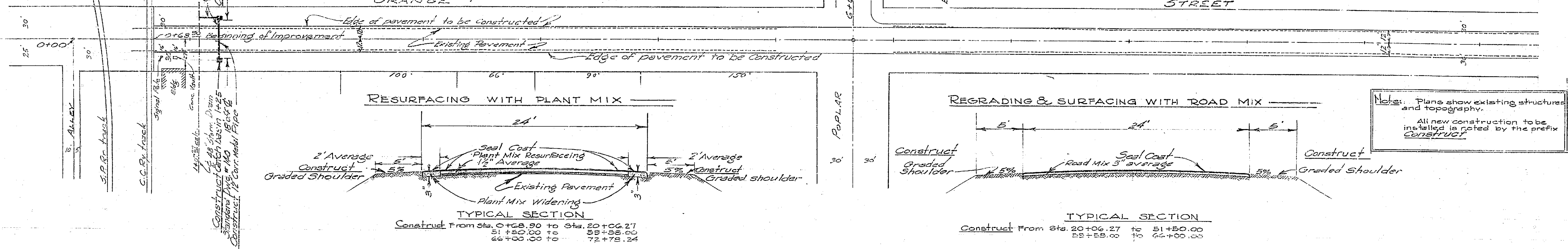
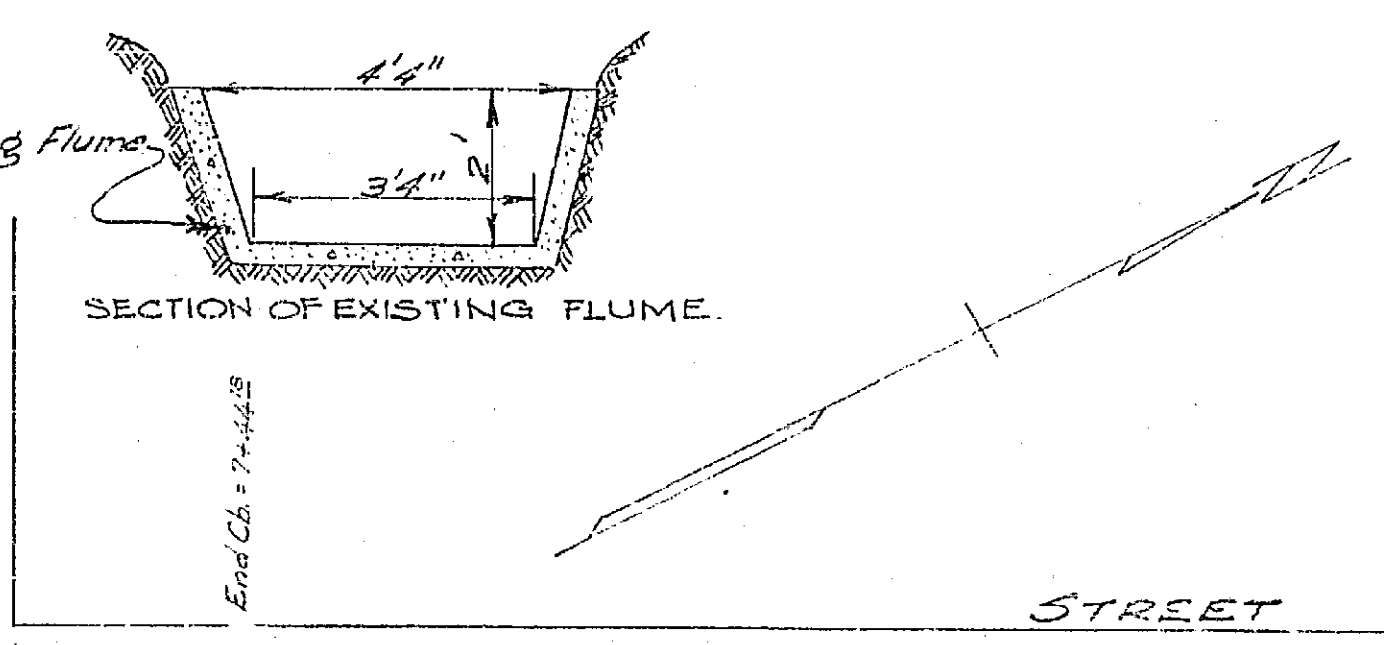
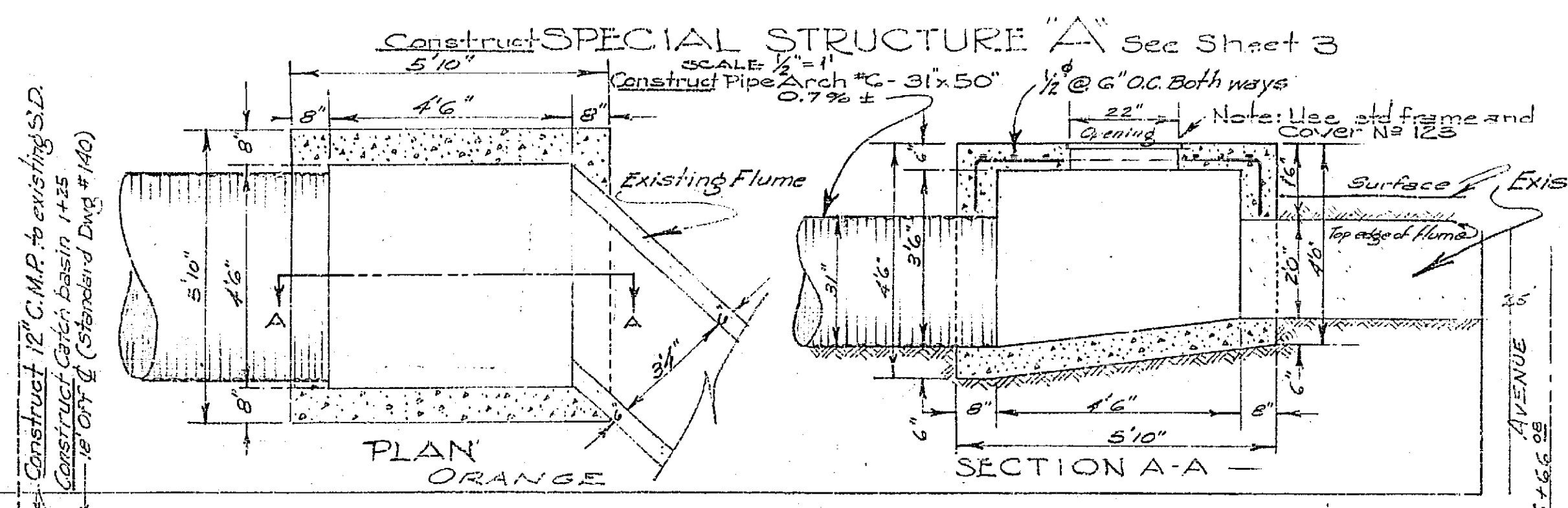
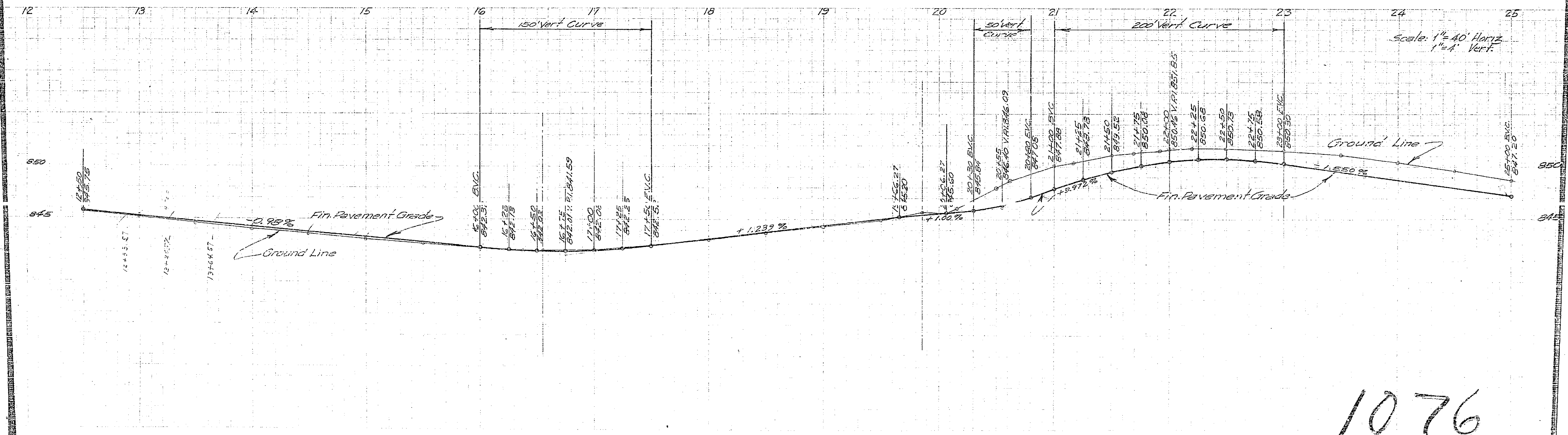
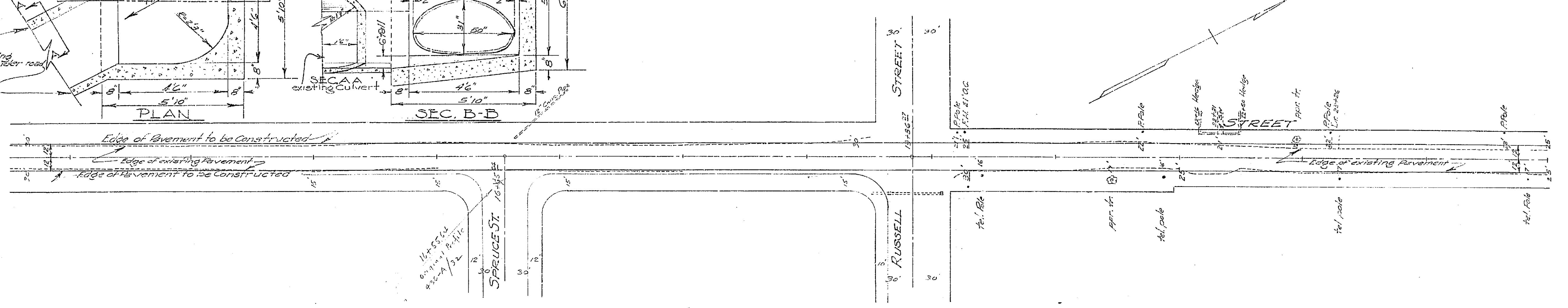
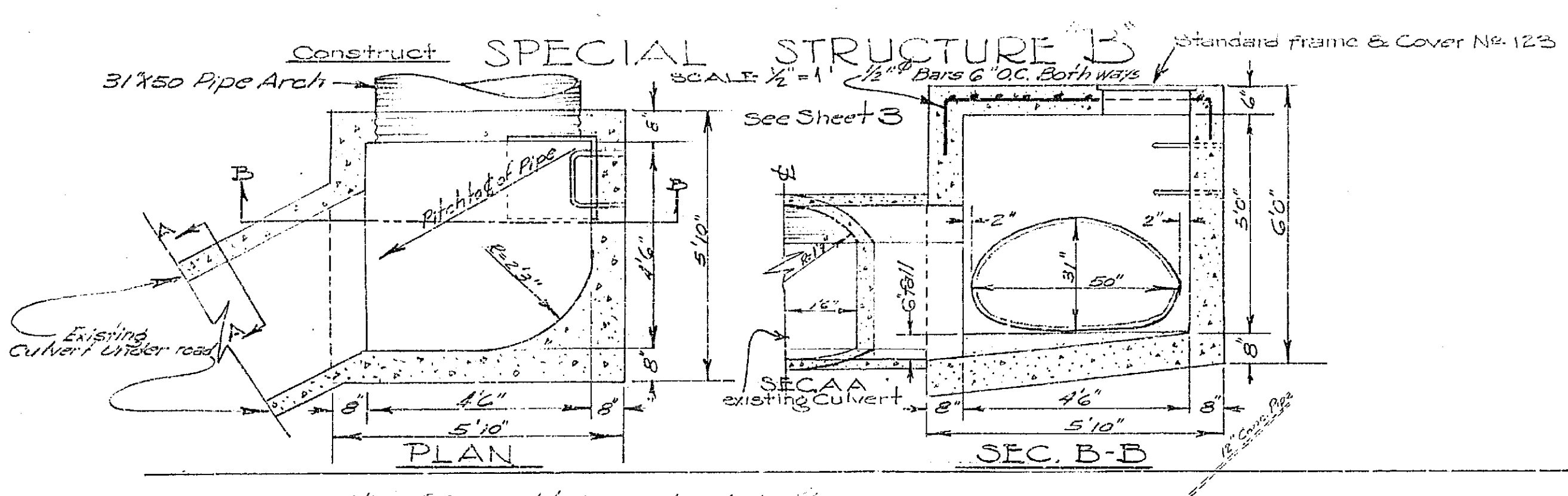


PLAN & PROFILE
 No. 1076
 OF PROPOSED PAVING ALONG
ORANGE STREET
 NLY. FROM C.C. RY. TRACK TO N. CITY LIMITS

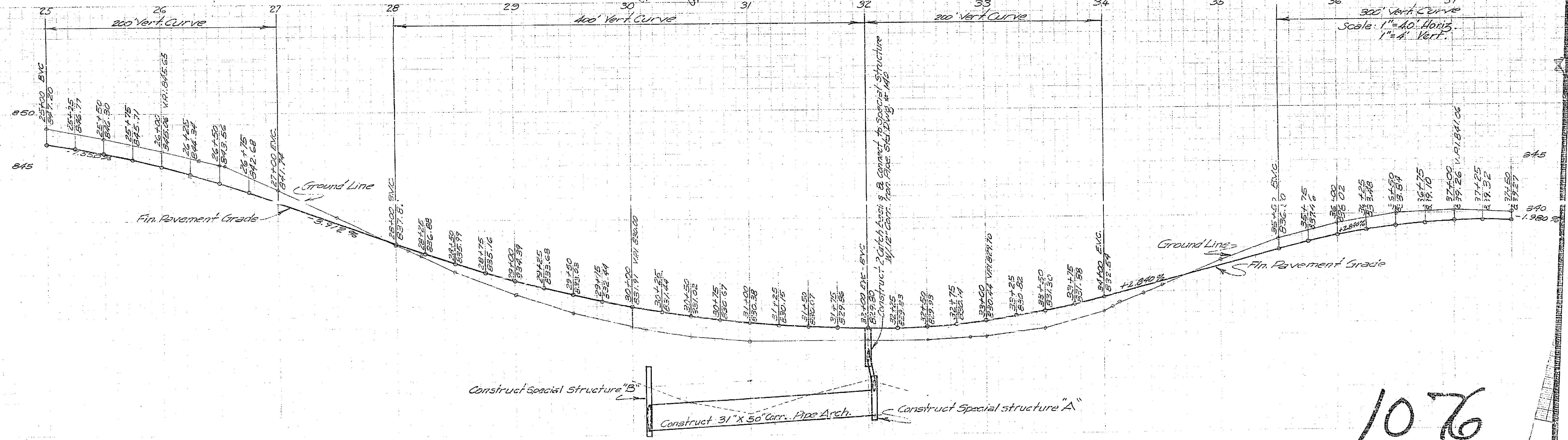
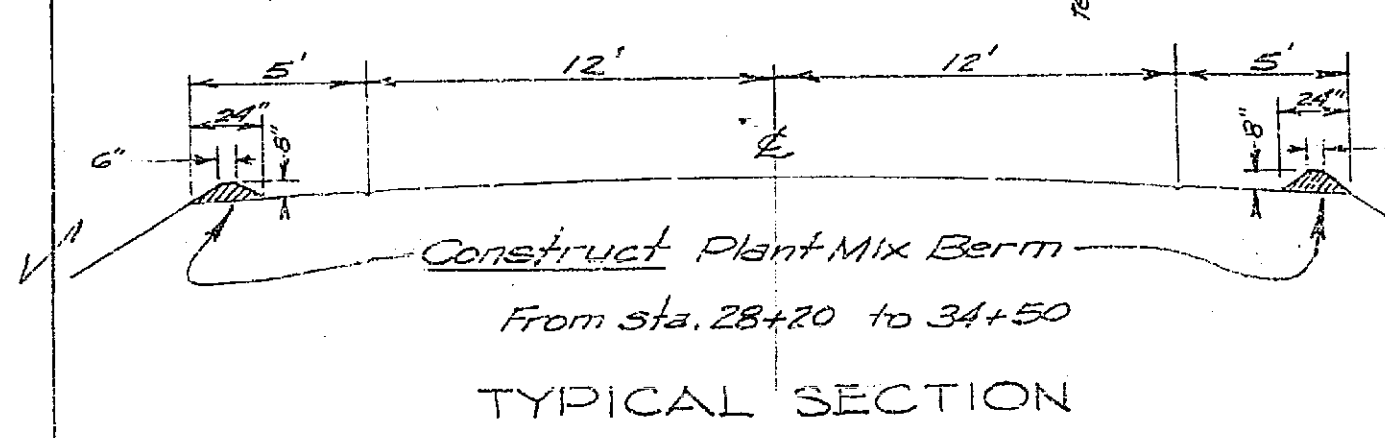
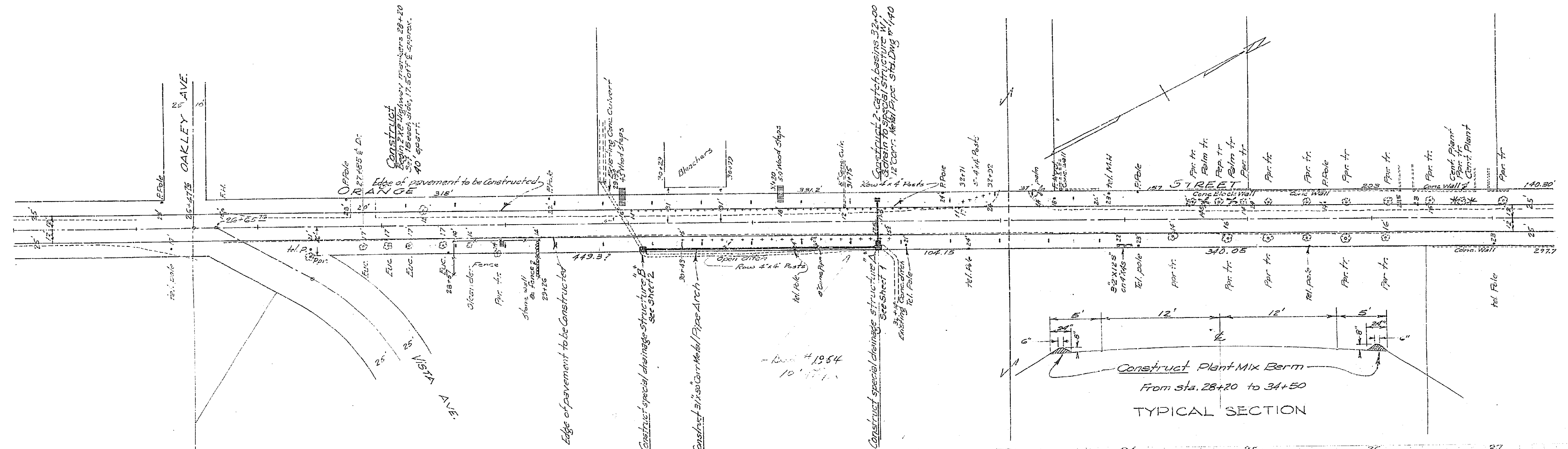
Approved: *M. H. Irvine*
 Milton H. Irvine Reg. C.E. No. 3011
 City Engineer
 1947



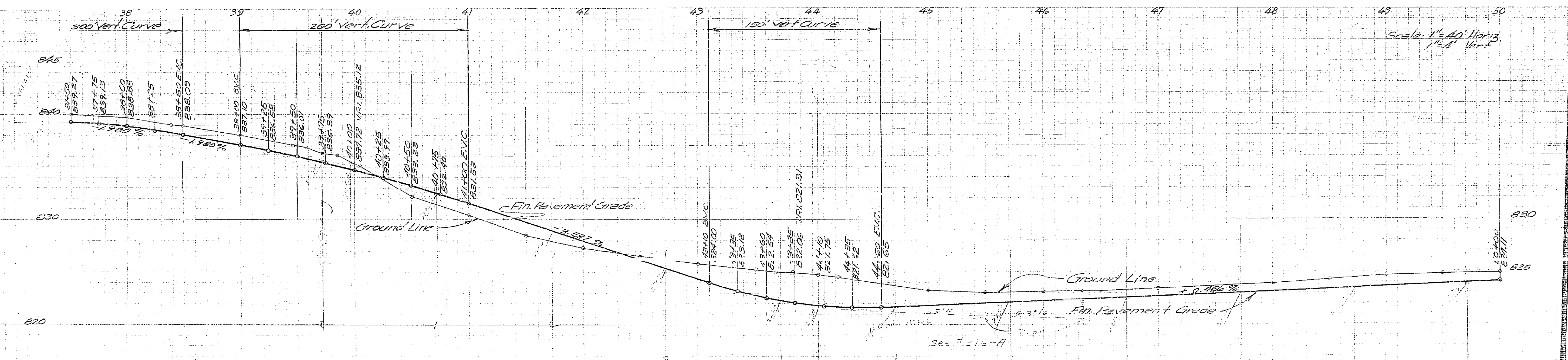
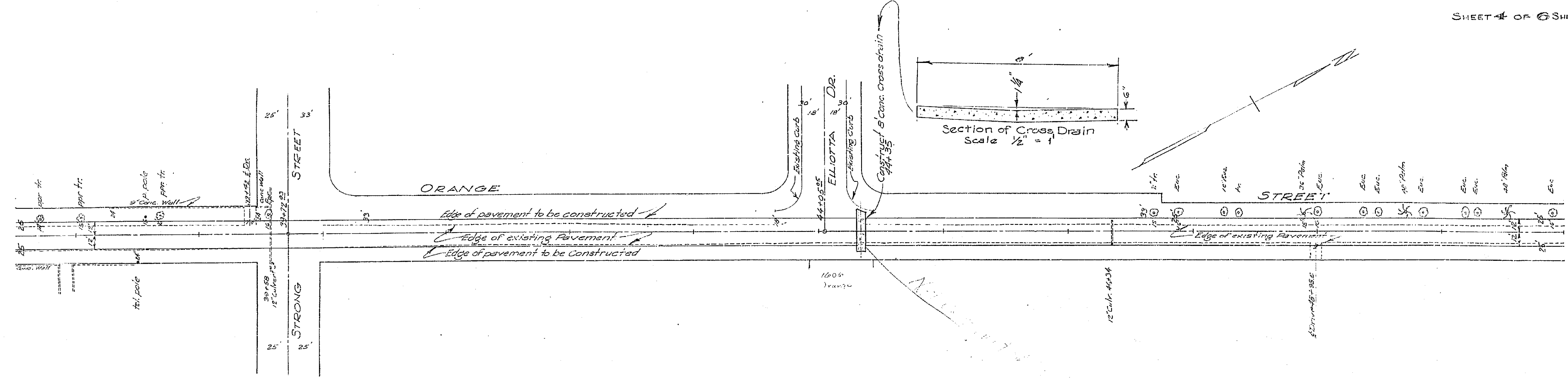
1076



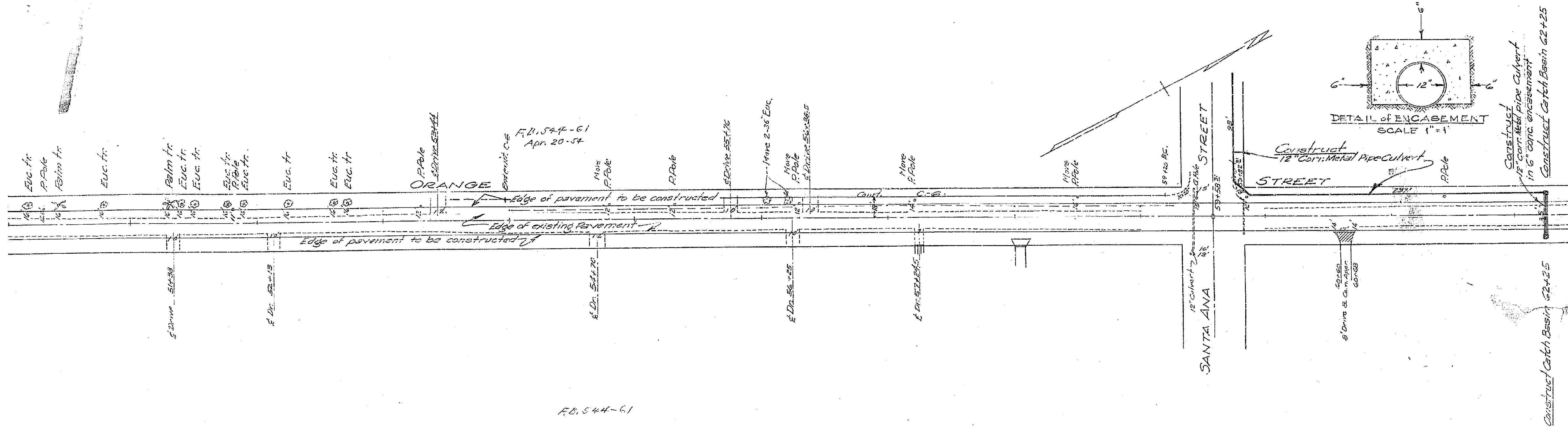
1076



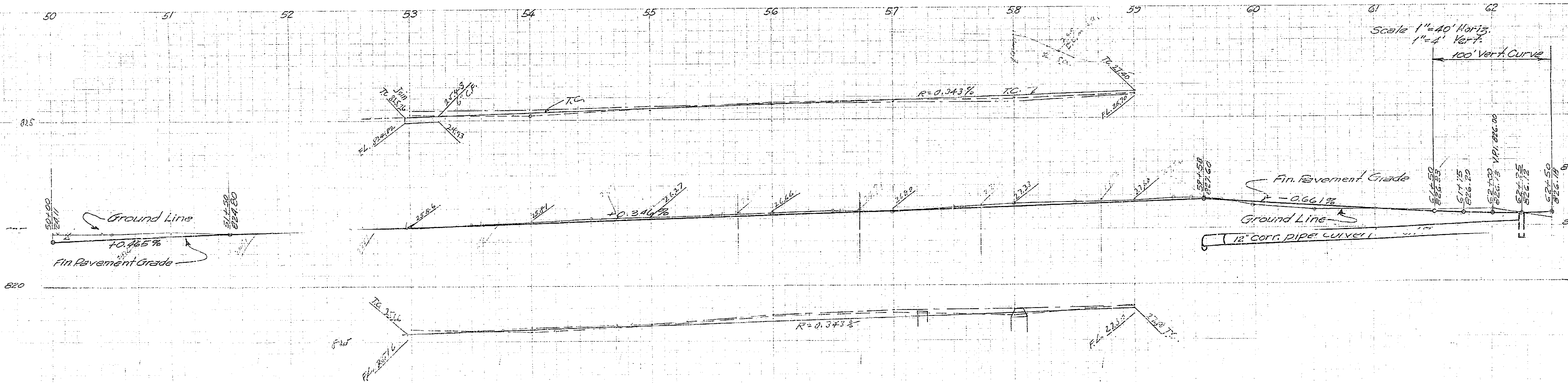
1076



1076

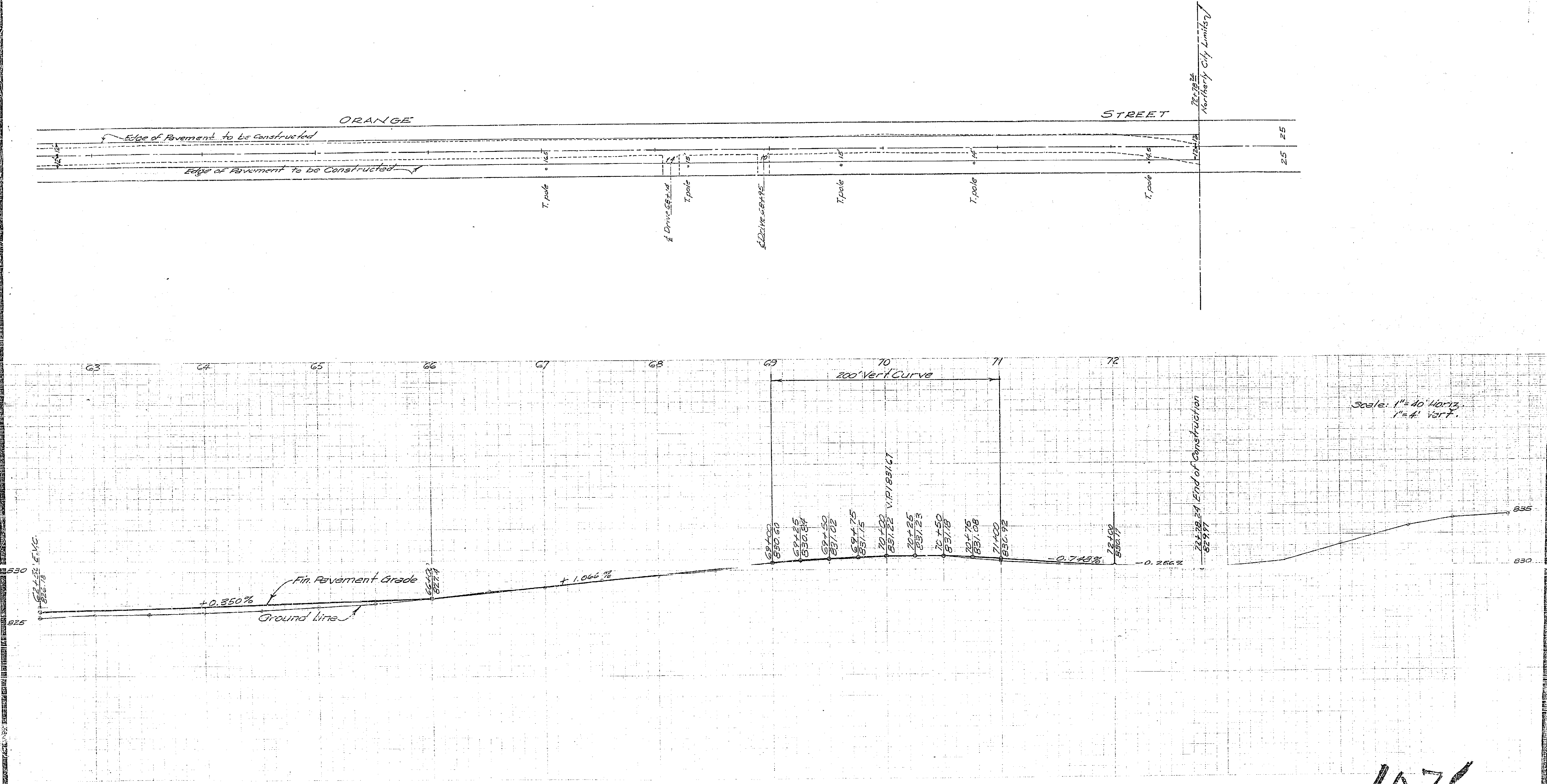


FD. 544-61



11+00
 19+96.30
 FB 515 7374

1076



1076