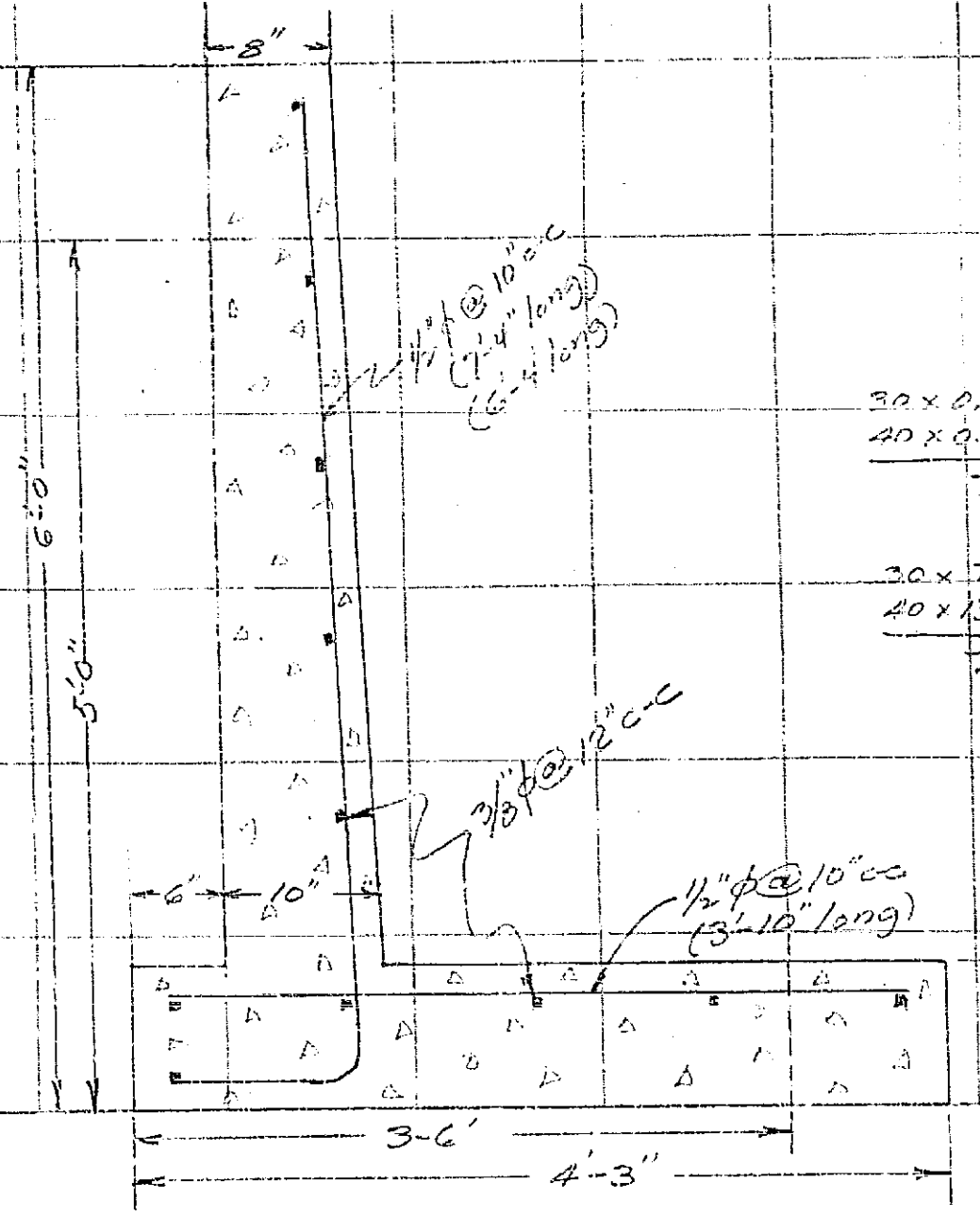
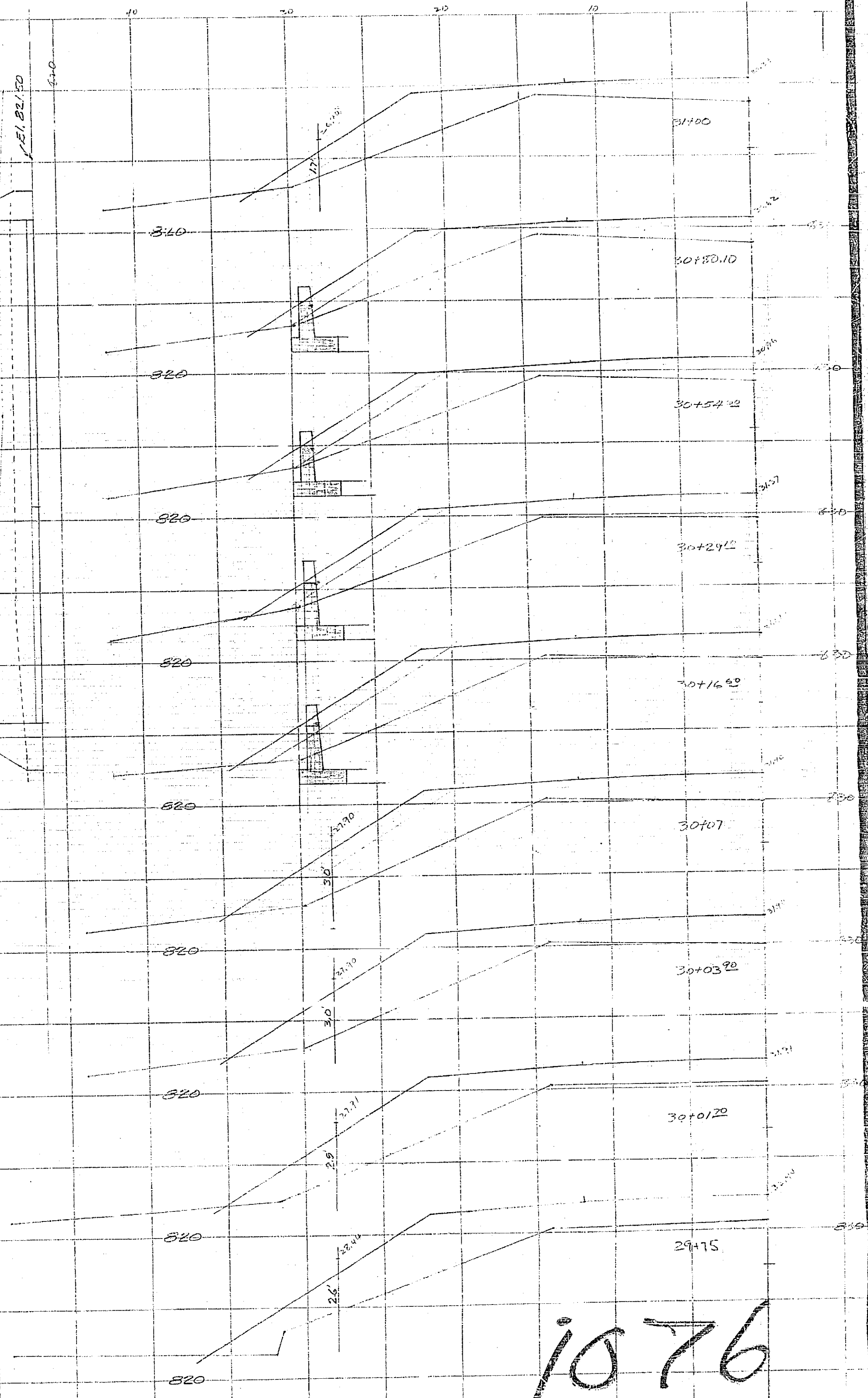


FREMONT SCHOOL
 Play Grounds
 1948
 File with
 #816
 2145



$30 \times 0.25 = 7.50 \text{ Cu Yds. Conc.}$
 $40 \times 0.30 = 12.00 \text{ v}$
 Total 19.50 Cu Yds. Conc.
 $30 \times 2.7 = 81.0 \text{ lbs. Steel}$
 $40 \times 3.1 = 124.0$
 Total 755.0 lbs. Steel = 1.2%



1076