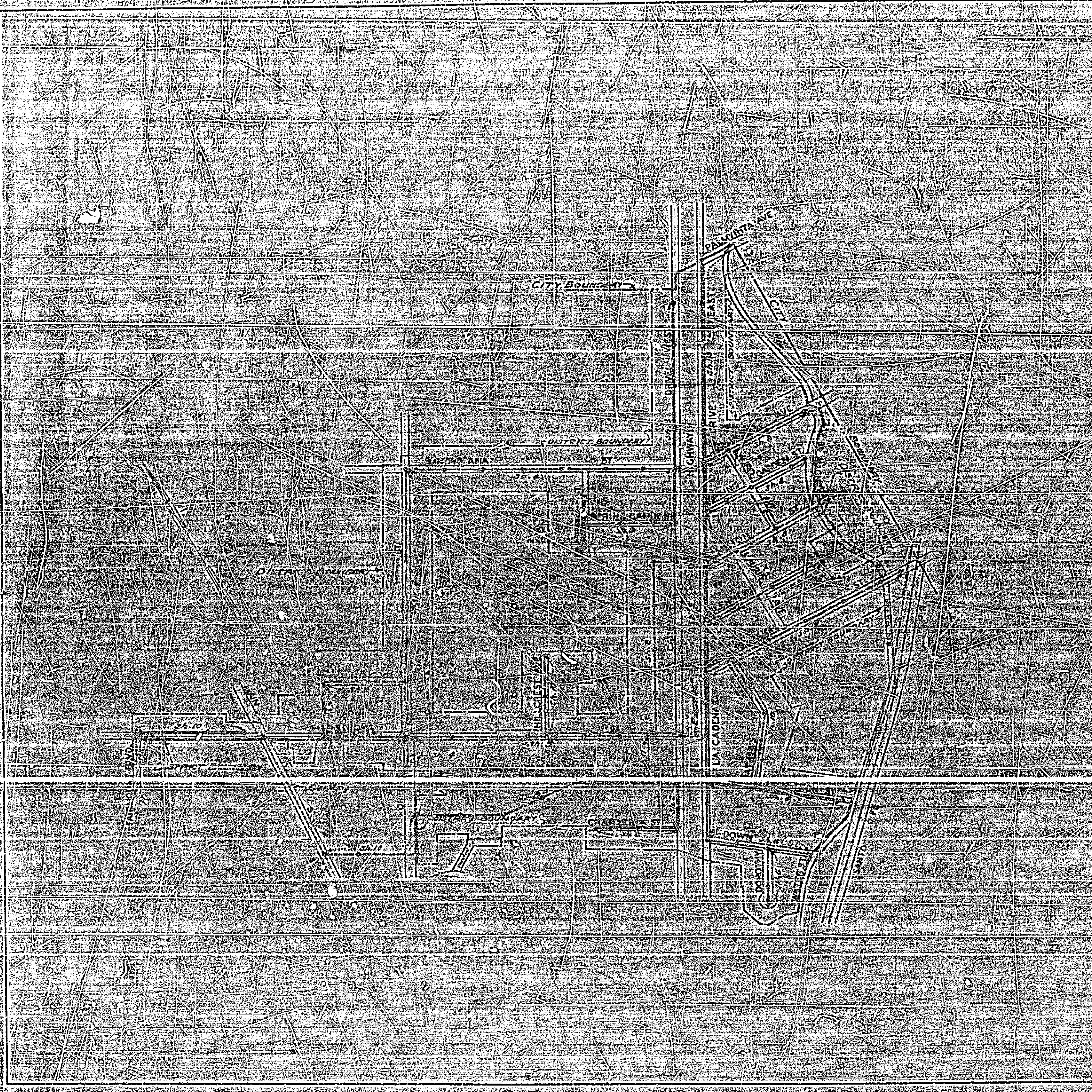


PLANS & PROFILES
-NO 1082
**NORTH SIDE
SANITARY SEWER DISTRICT**
RIVERSIDE CALIFORNIA



APPROVED *M. Hurvine*
M. HURVINE (REG. C.E. 3011)
CITY ENGINEER

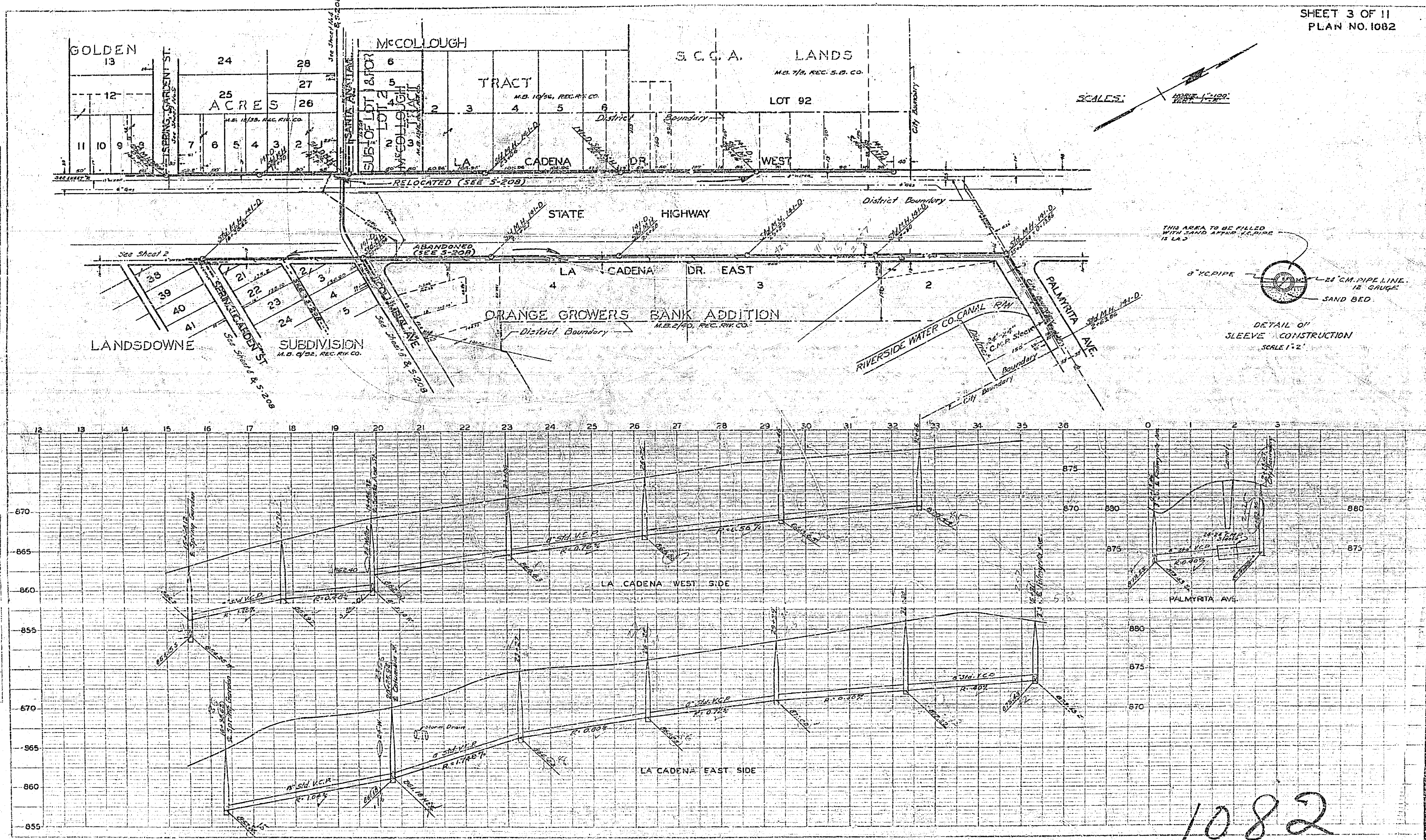
THESE PLANS APPROVED AND ADOPTED BY THE
MAYOR AND COUNCIL OF THE CITY OF RIVERSIDE,
STATE OF CALIFORNIA ON THIS 22ND DAY OF
MAY 1952

Edmund
CITY CLERK

LEGEND

- PROPOSED SEWER
- PROPOSED SEWER SHOWN ON OTHER SHEETS
- STANDARD MANHOLE OR DROP MANHOLE
- STANDARD CLEANOUT
- STANDARD WYE BRANCH
- STANDARD HOUSE CONNECTION
- STANDARD CHIMNEY

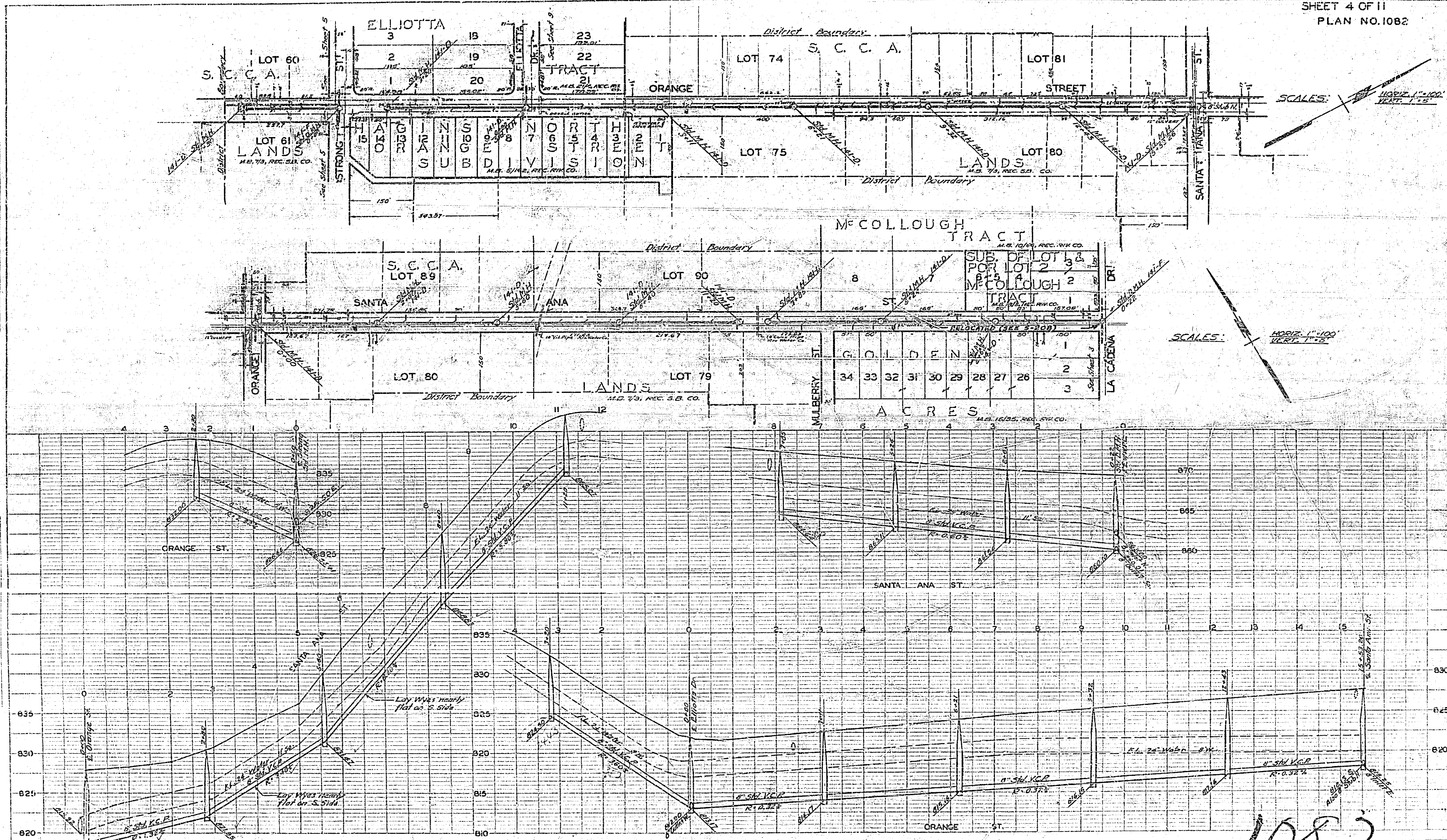
1082



1082

PLAN	DATE	BY	CHECKED
1082	10/1/25	J. H. HARRIS	J. H. HARRIS
1082	10/1/25	J. H. HARRIS	J. H. HARRIS
1082	10/1/25	J. H. HARRIS	J. H. HARRIS

DATE	BY	CHECKED
10/1/25	J. H. HARRIS	J. H. HARRIS
10/1/25	J. H. HARRIS	J. H. HARRIS
10/1/25	J. H. HARRIS	J. H. HARRIS



SCALES: HORIZ. 1"=100' VERT. 1"=5'

SCALES: HORIZ. 1"=100' VERT. 1"=5'

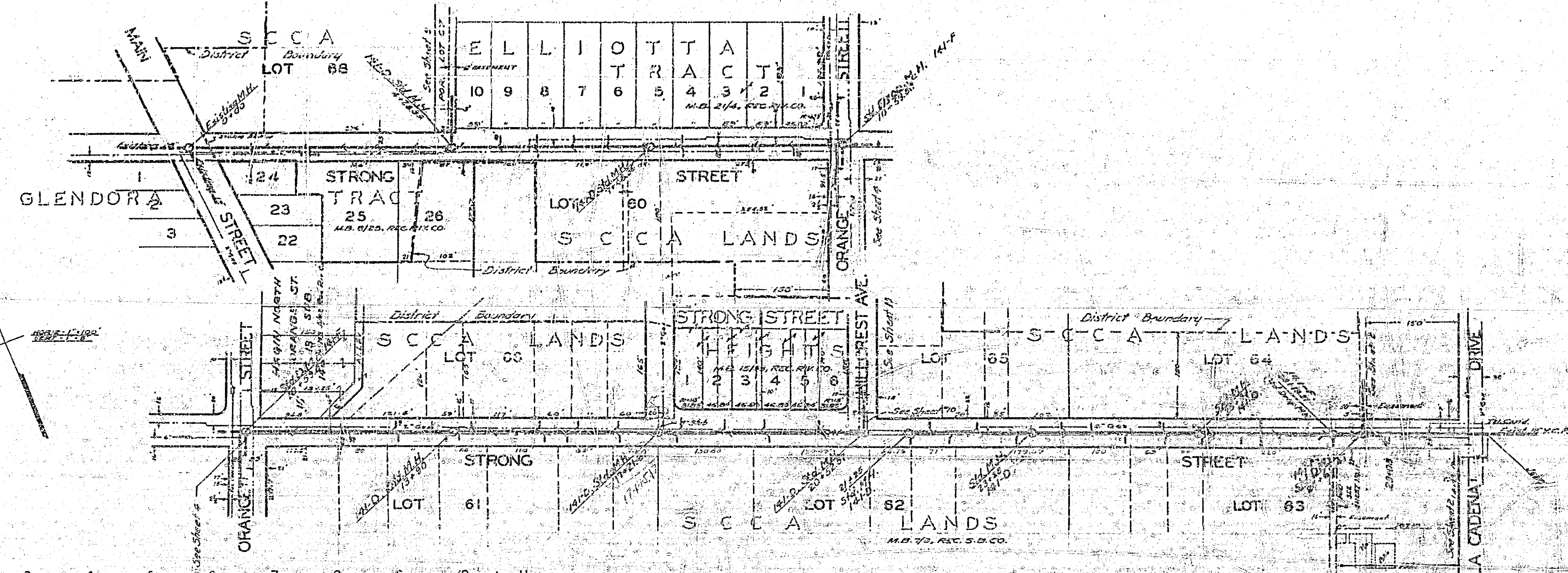
1082

PLAN

DATE	
BY	
CHECKED	
APPROVED	
REVISIONS	

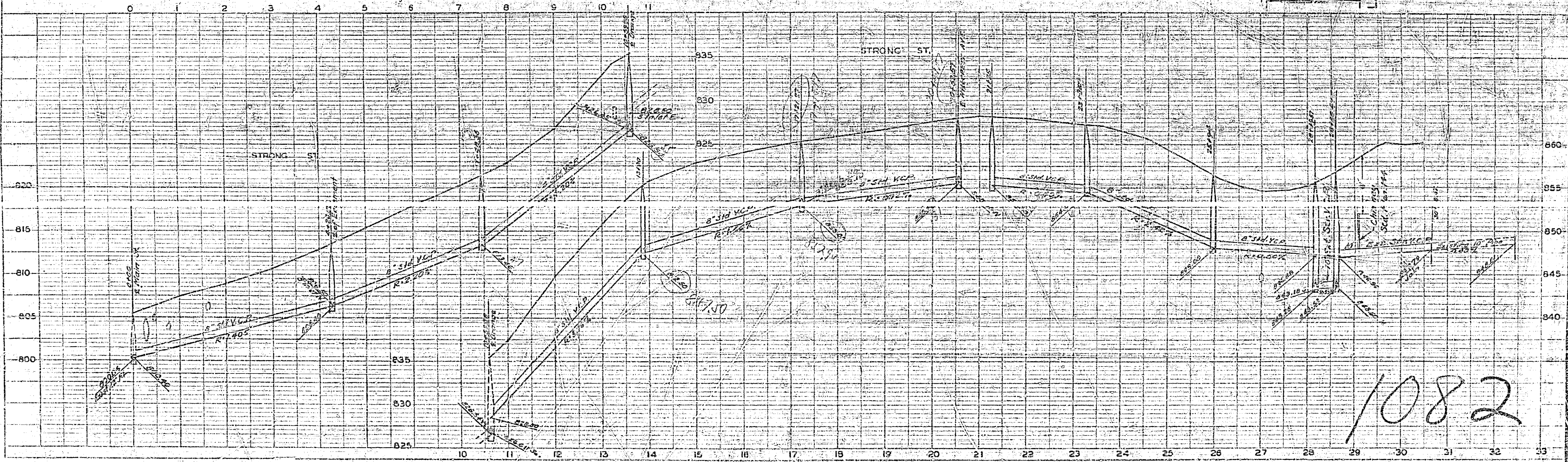
PROFILE

DATE	
BY	
CHECKED	
APPROVED	
REVISIONS	

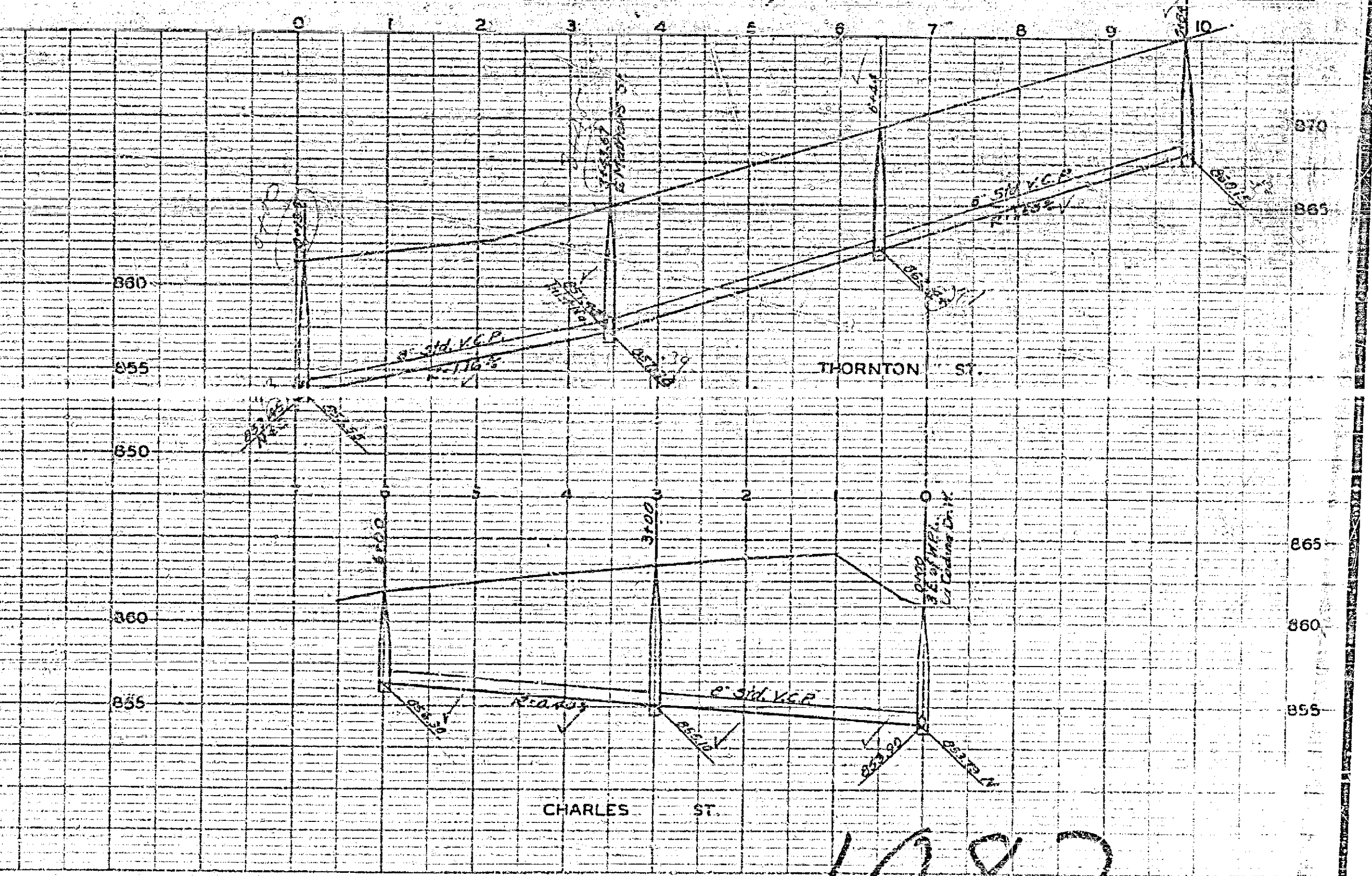
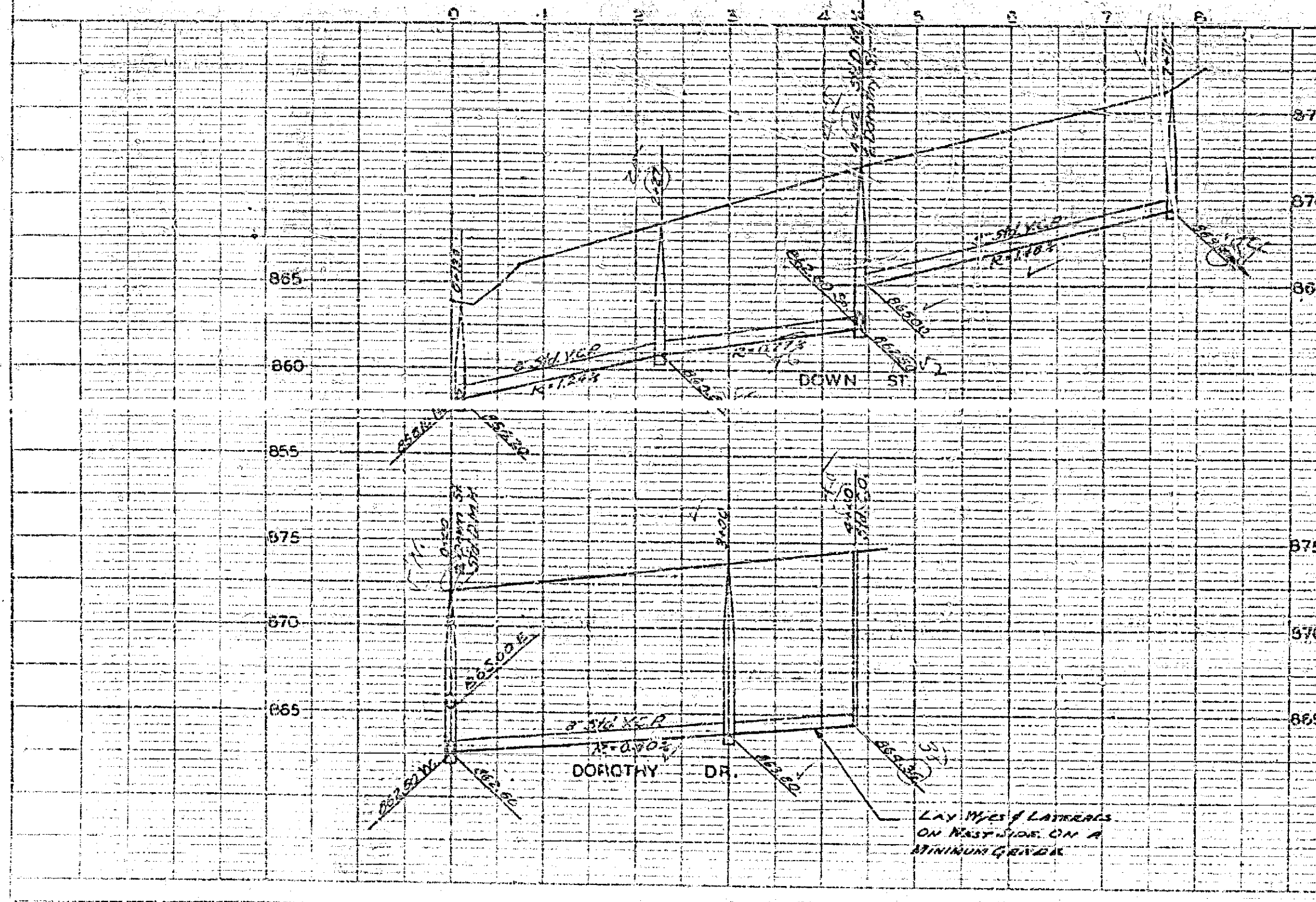
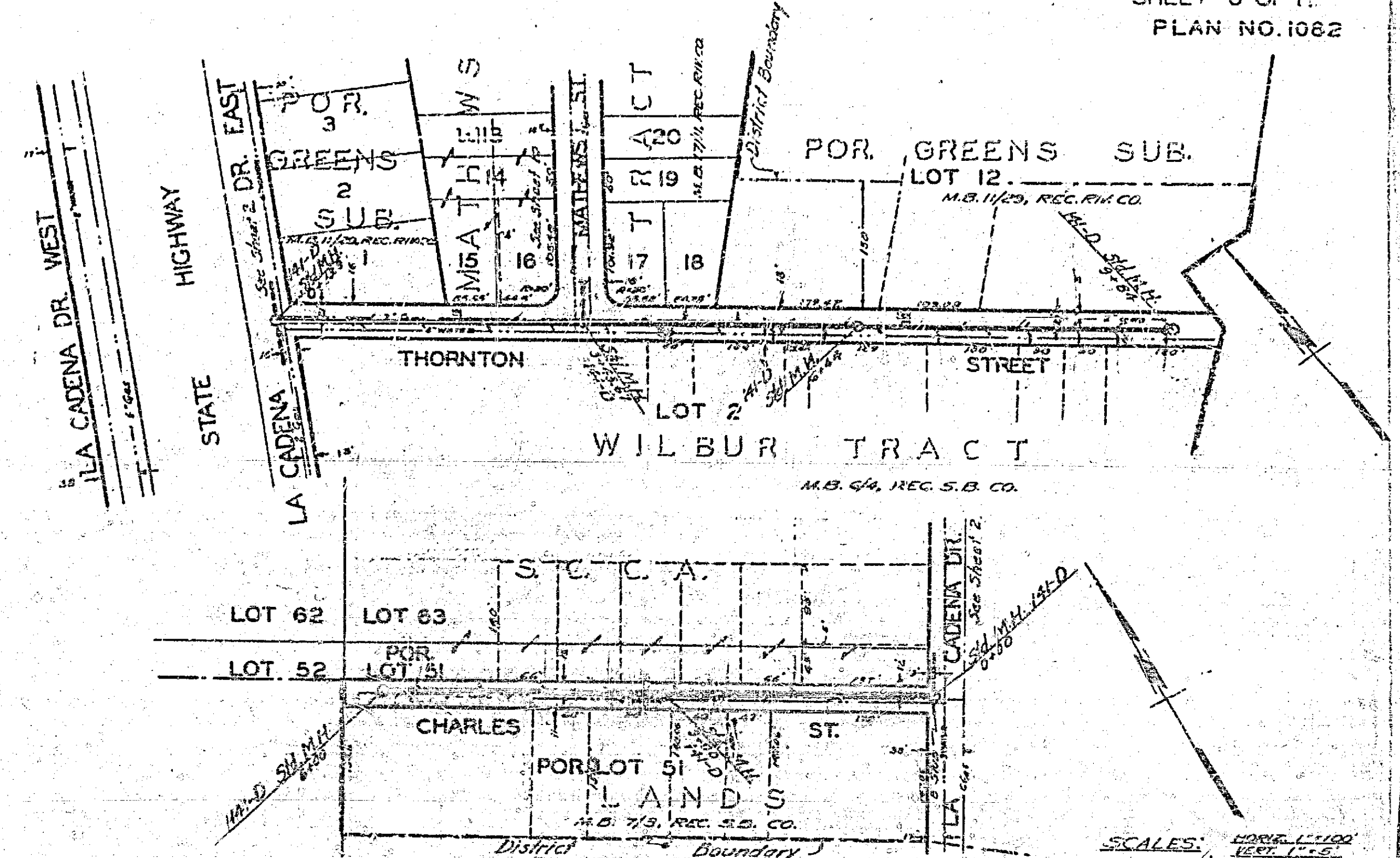
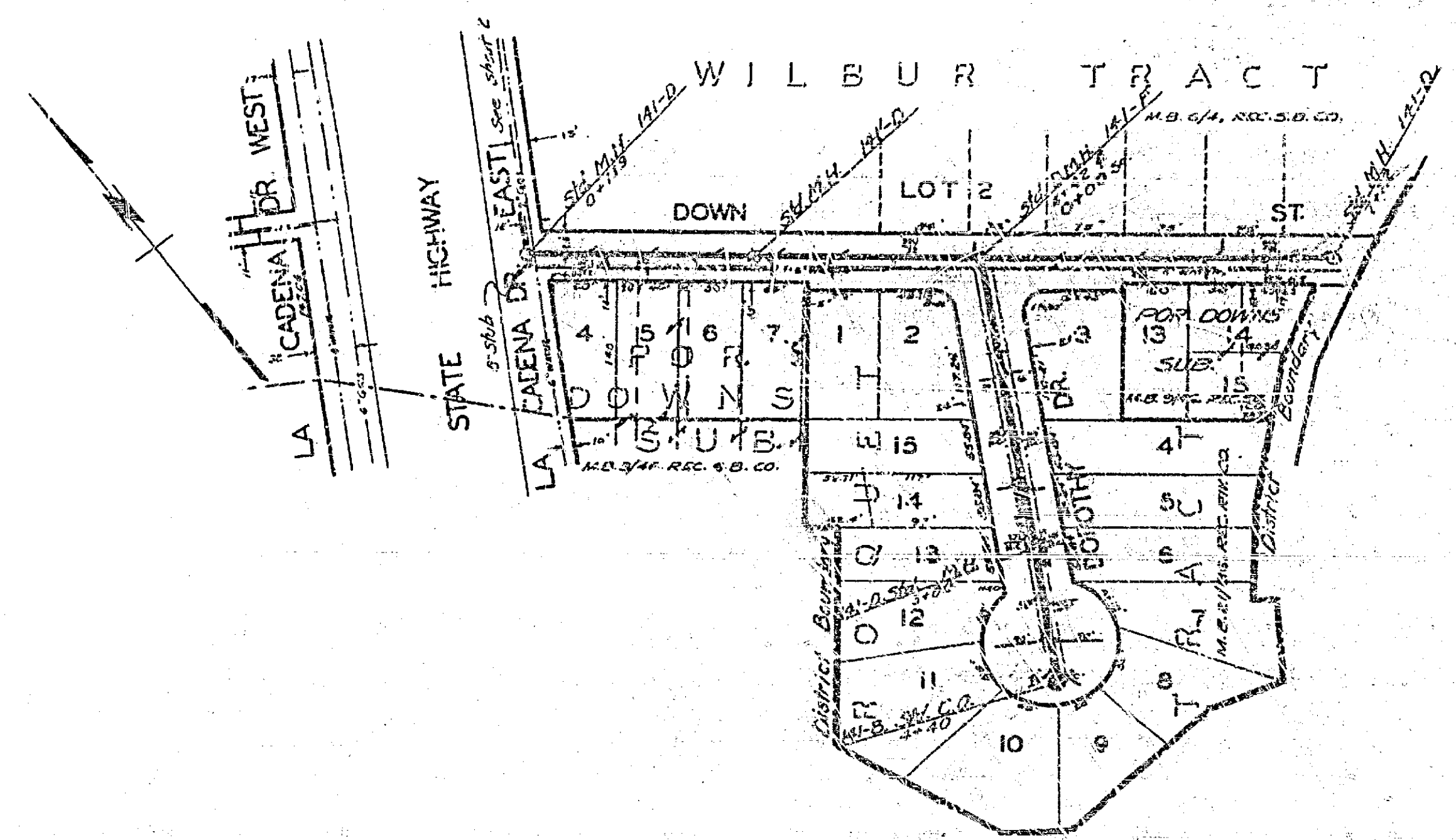


SCALE: 1" = 100'

PLAN	DATE	BY
PROJ. NO.	DATE	BY
REV. NO.	DATE	BY

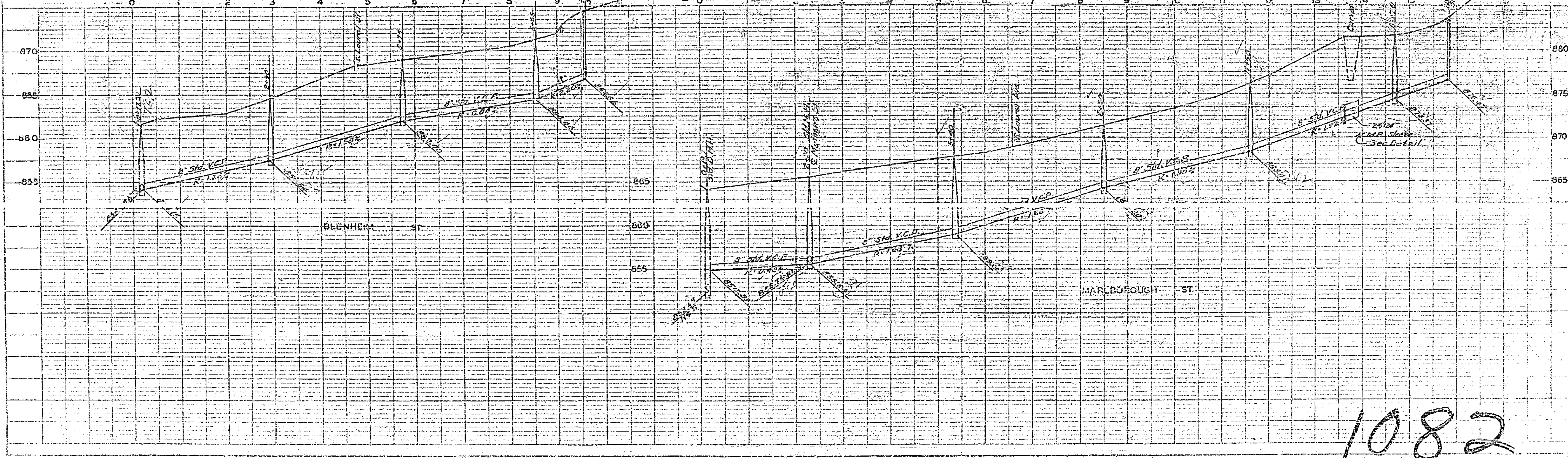
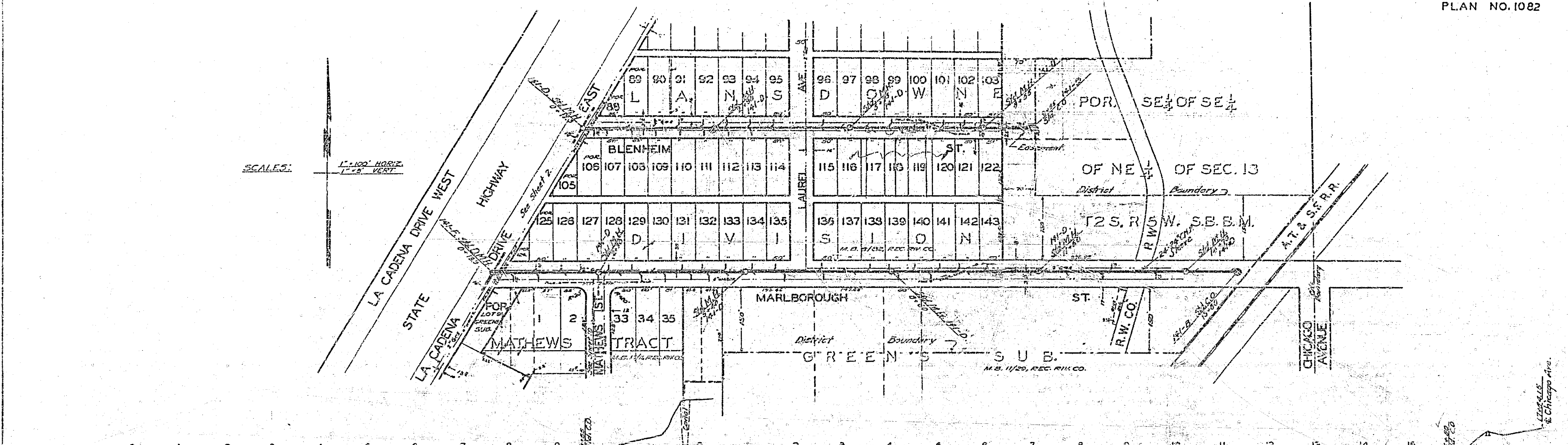


PROFILE	DATE	BY
PROJ. NO.	DATE	BY
REV. NO.	DATE	BY



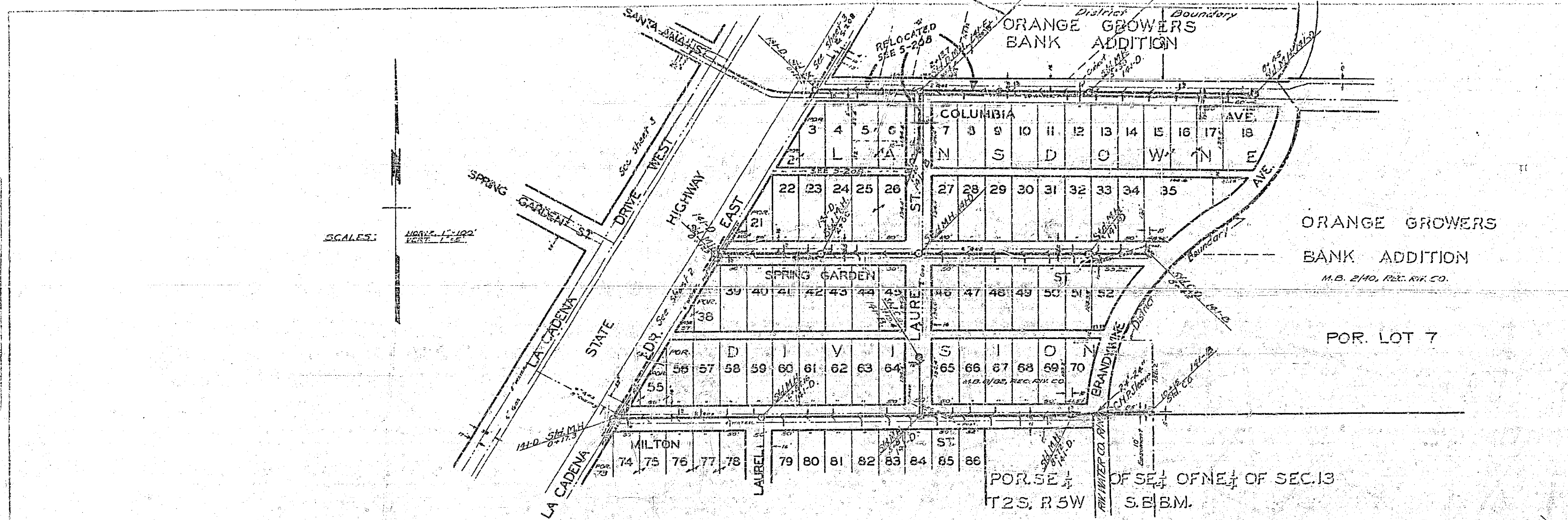
1082

SCALE: 1" = 100' HORIZ
 1" = 40' VERT



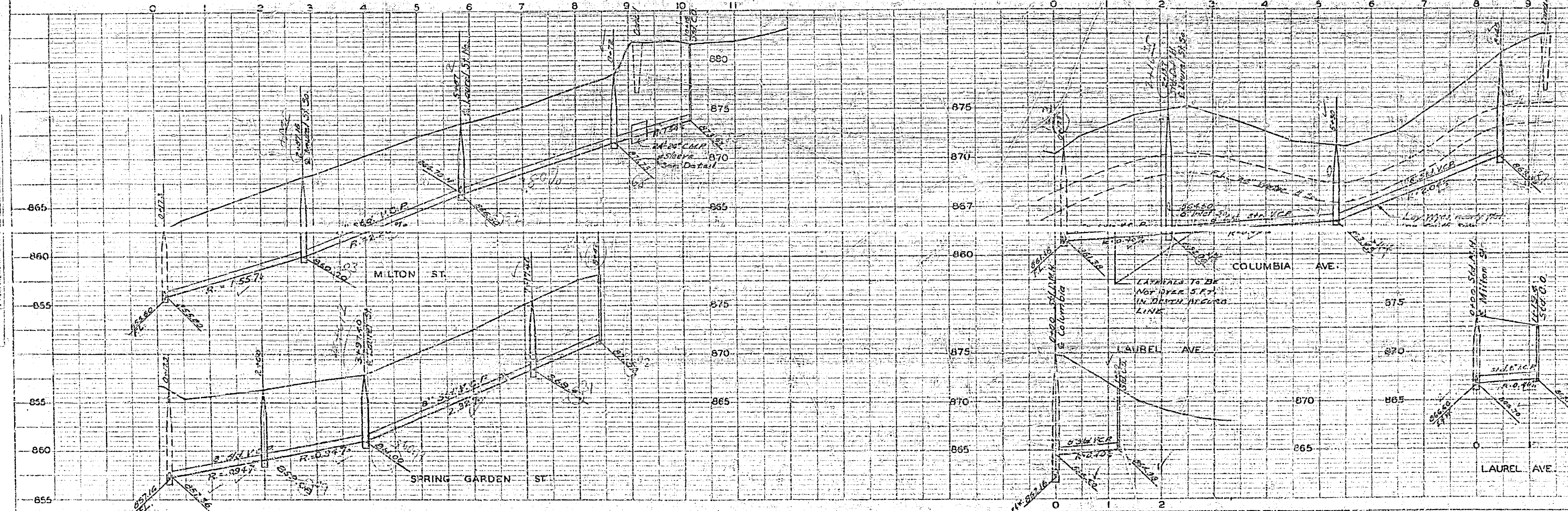
1082

PLAN	
DATE	
BY	
FOR	
REVISIONS	

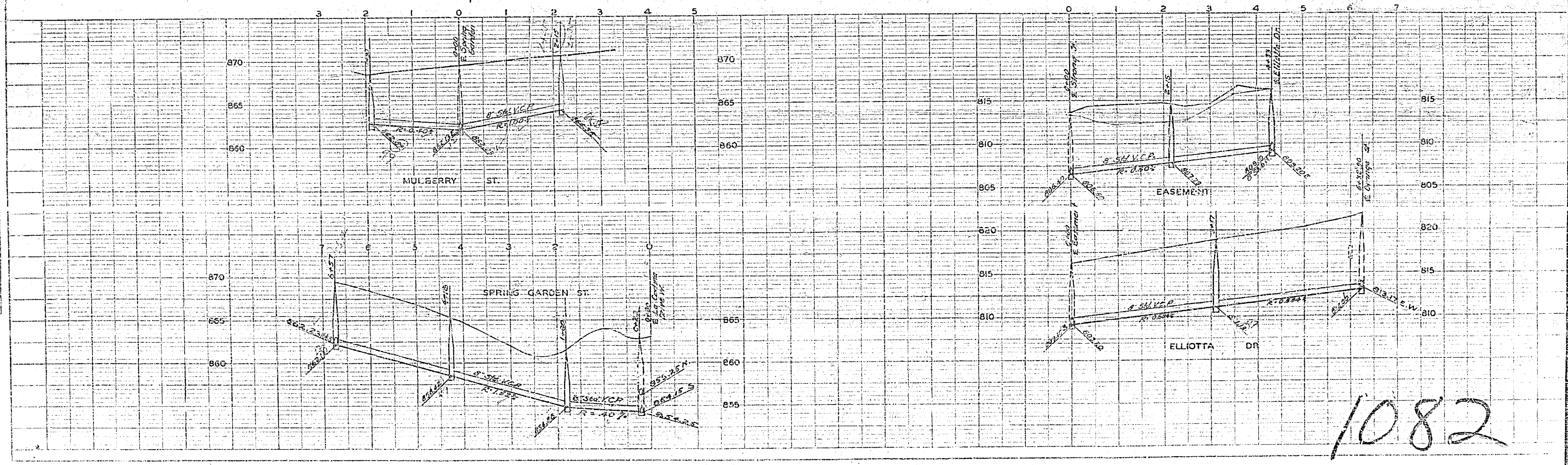
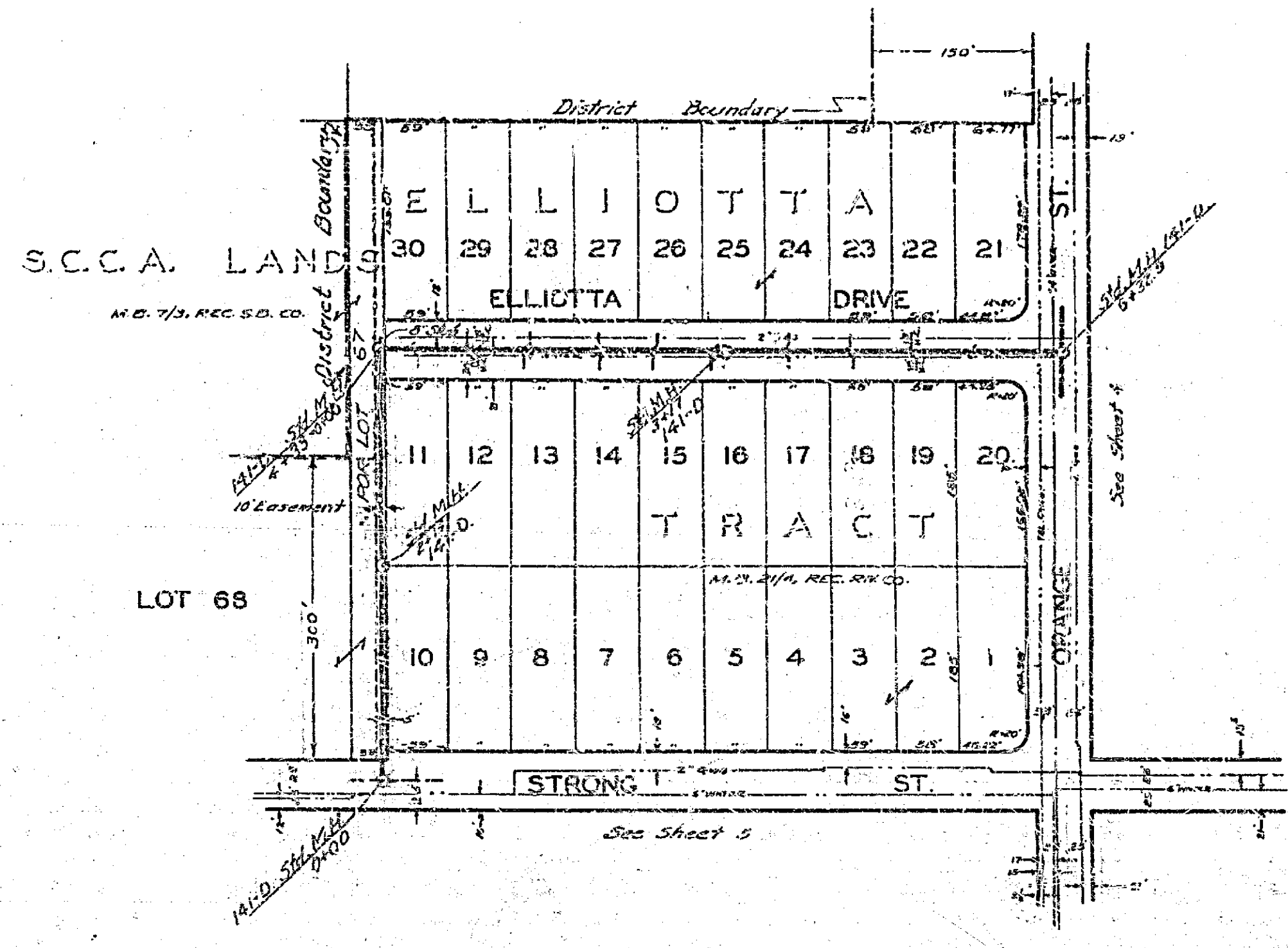
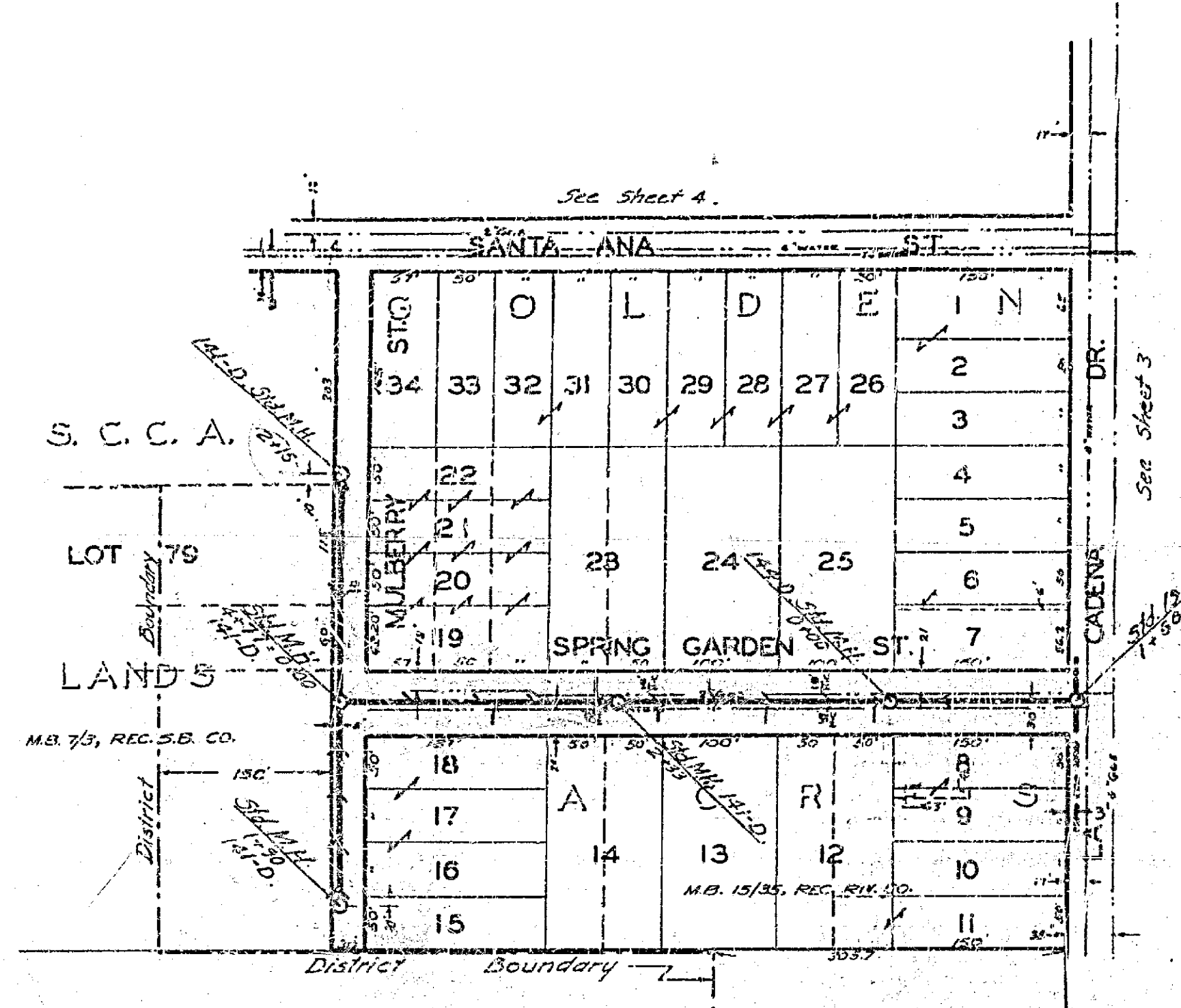


SCALE: 1" = 100'

DATE	
BY	
FOR	
REVISIONS	



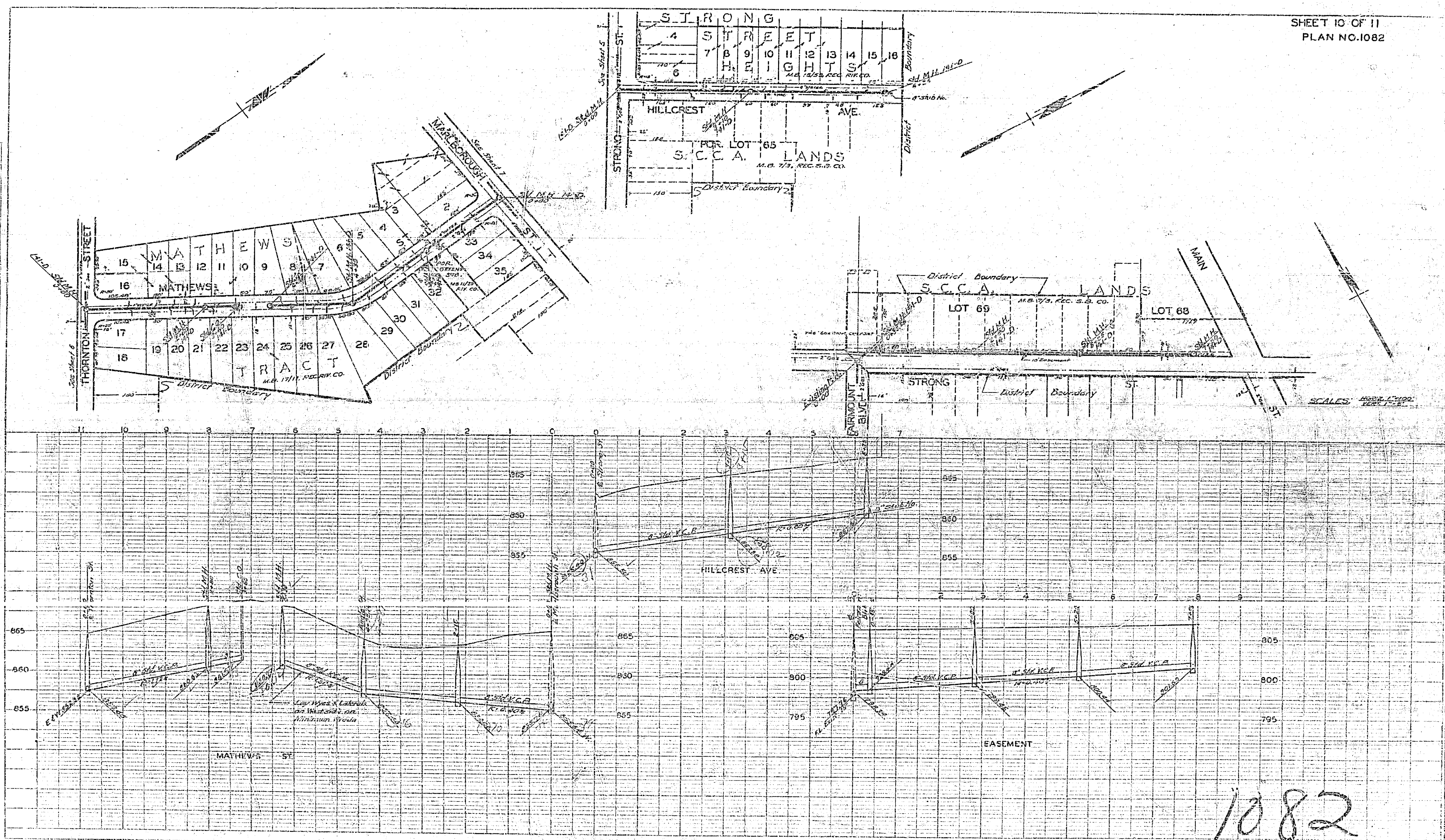
1082



1082

PLAN	DATE	BY	CHECKED
1082	10/1/50	J. H. ...	J. H. ...
1082	10/1/50	J. H. ...	J. H. ...
1082	10/1/50	J. H. ...	J. H. ...

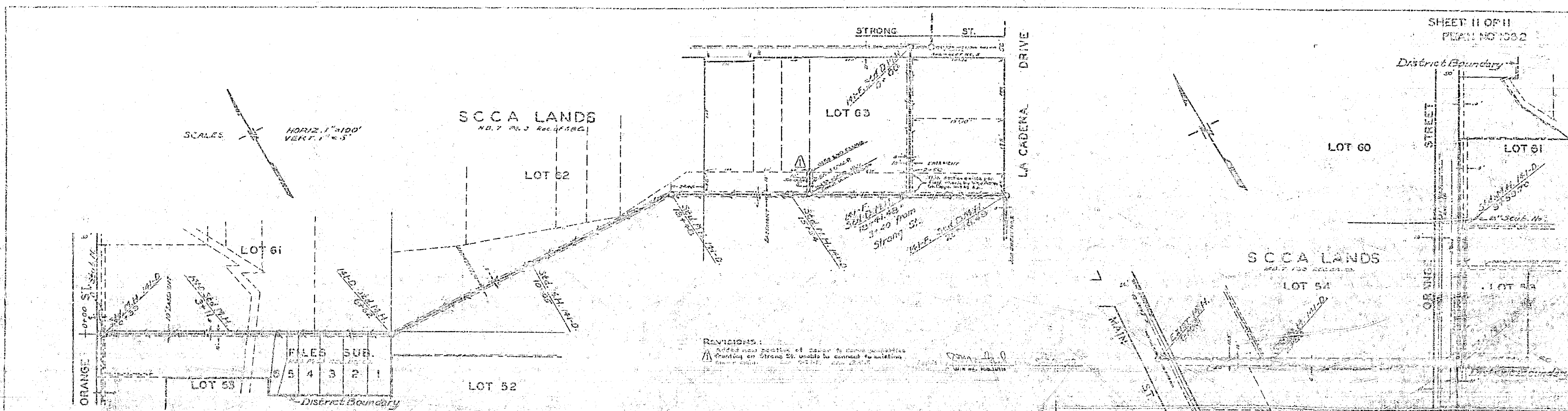
PLAN	DATE	BY	CHECKED
1082	10/1/50	J. H. ...	J. H. ...
1082	10/1/50	J. H. ...	J. H. ...
1082	10/1/50	J. H. ...	J. H. ...



PLAN	DATE
DATE	BY
NO.	NO.
NO.	NO.

PROFILE	DATE
DATE	BY
NO.	NO.
NO.	NO.

1082



SCALES
HORIZ. 1"=100'
VERT. 1"=5'

REVISIONS:
1. Added new section of survey to show easements
2. Deleted old section of survey to show easements
3. Deleted old section of survey to show easements

