

LEGEND

- PROPOSED SEWER
- PROPOSED SEWER SHOWN ON OTHER SHEETS
- STANDARD MANHOLE OR DROP MANHOLE
- STANDARD CLEANOUT
- STANDARD WYE BRANCH
- STANDARD HOUSE CONNECTION
- STANDARD CHIMNEY

INDEX MAP  
PLANS & PROFILES  
NO. 1083

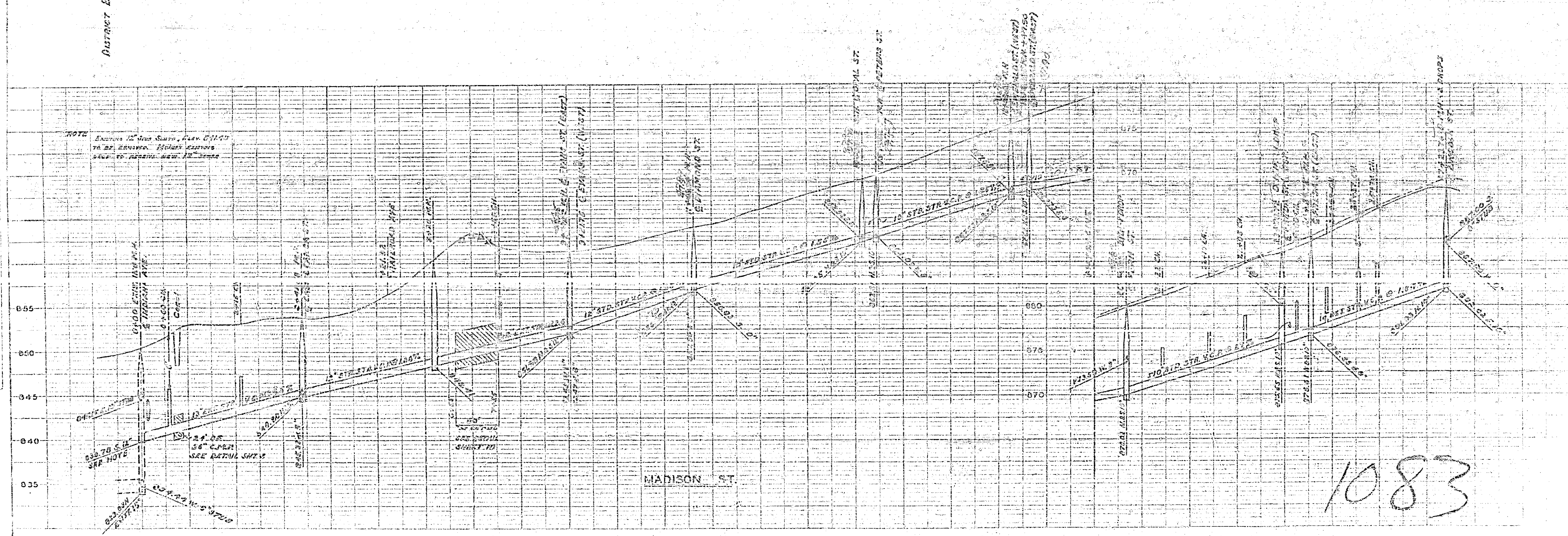
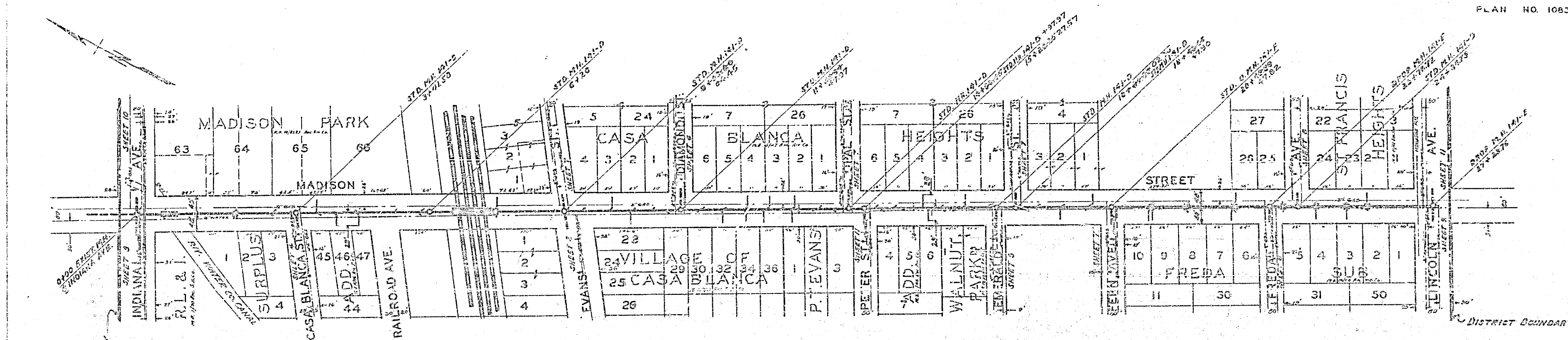
CASA BLANCA  
SANITARY SEWER DISTRICT  
RIVERSIDE CALIFORNIA

1083

APPROVED *M. H. Irvine*  
M. H. IRVINE REG. C.E. 3011  
CITY ENGINEER

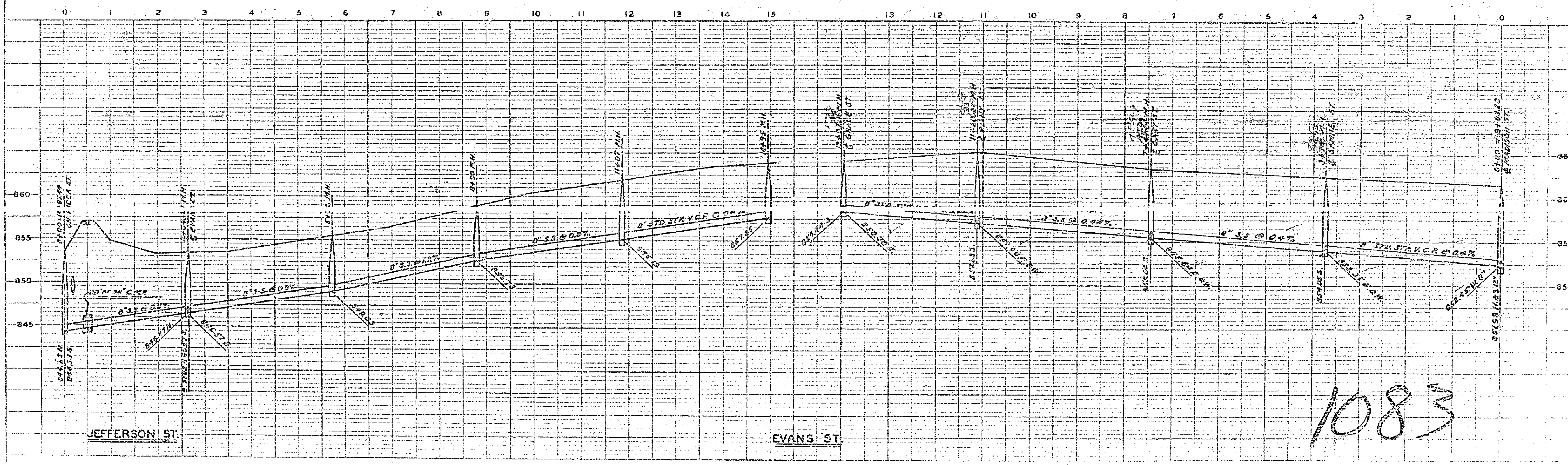
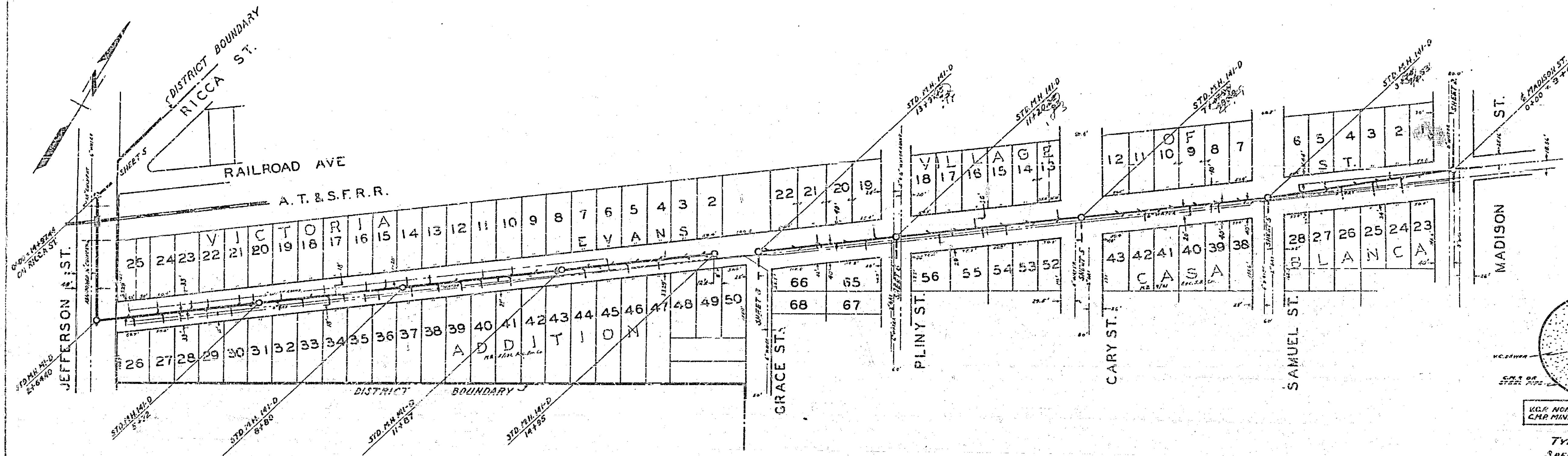
THESE PLANS APPROVED AND ADOPTED BY THE  
MAYOR AND COUNCIL OF THE CITY OF RIVERSIDE  
STATE OF CALIFORNIA ON THIS 22 DAY OF  
May 1952  
*W. H. Davis*  
CITY CLERK



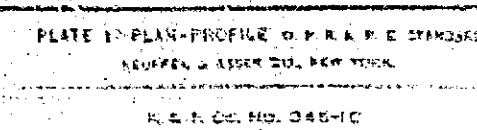
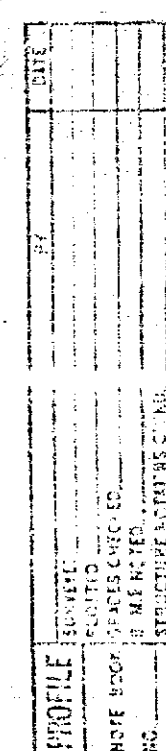


1083









1083



REVISIONS  
DATE  
BY  
REASON  
1  
2  
3  
4  
5  
6  
7  
8  
9  
10  
11  
12  
13  
14  
15  
16  
17  
18  
19  
20  
21  
22  
23  
24  
25  
26  
27  
28  
29  
30  
31  
32  
33  
34  
35  
36  
37  
38  
39  
40  
41  
42  
43  
44  
45  
46  
47  
48  
49  
50  
51  
52  
53  
54  
55  
56  
57  
58  
59  
60  
61  
62  
63  
64  
65  
66  
67  
68  
69  
70  
71  
72  
73  
74  
75  
76  
77  
78  
79  
80  
81  
82  
83  
84  
85  
86  
87  
88  
89  
90  
91  
92  
93  
94  
95  
96  
97  
98  
99  
100

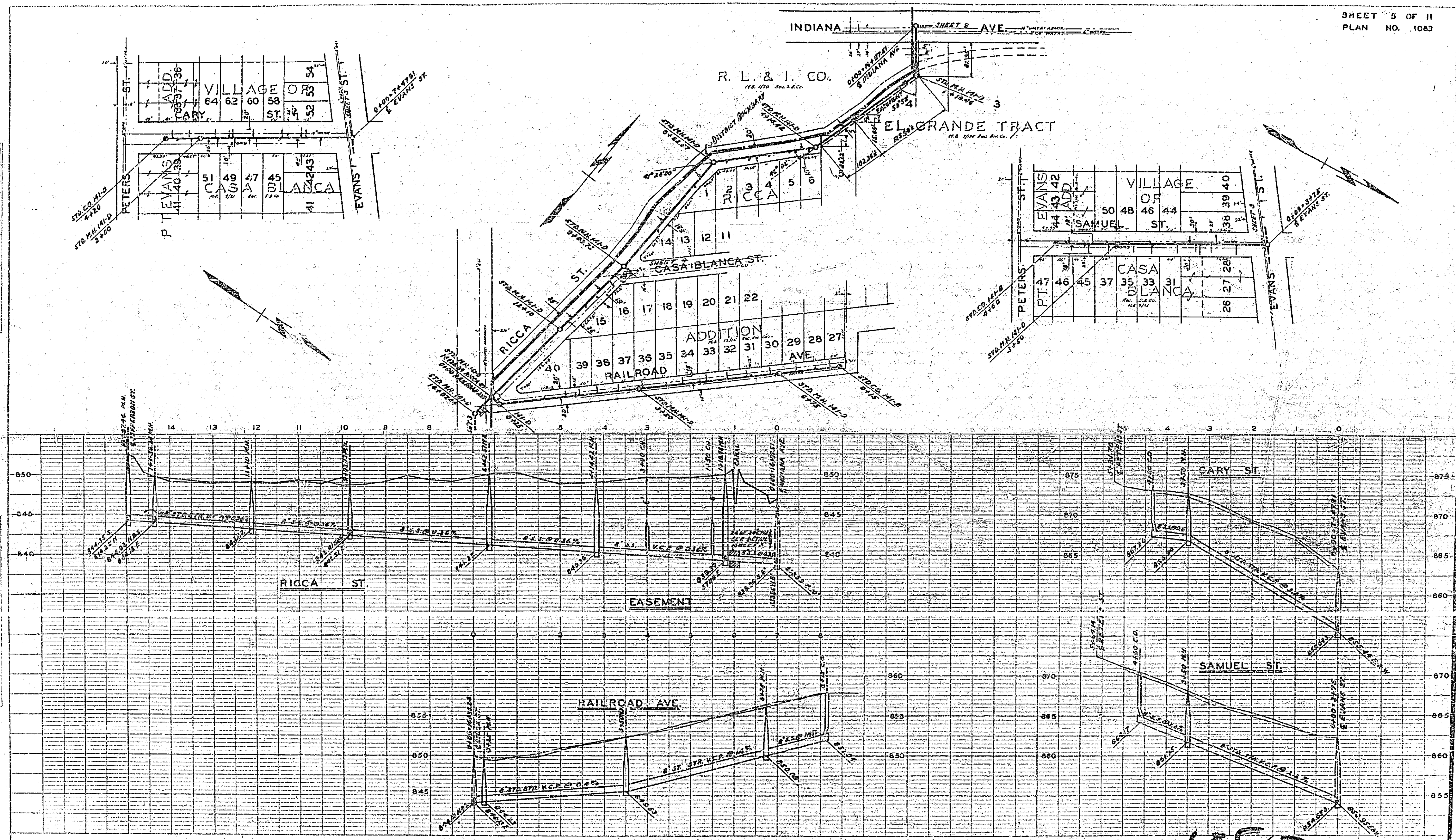


PLATE 1. PLAN-PROFILE OF R.R. & E. STATION.  
RAILROAD & E. STATION CO. OF IND.  
SHEET 5 OF 11  
PLAN NO. 1083

1083



PLAN  
NOTES:  
1. ALL LOTS ARE 1/4 AC.  
2. ALL LOTS ARE 1/4 AC.  
3. ALL LOTS ARE 1/4 AC.

PROFILE  
NOTES:  
1. ALL LOTS ARE 1/4 AC.  
2. ALL LOTS ARE 1/4 AC.  
3. ALL LOTS ARE 1/4 AC.

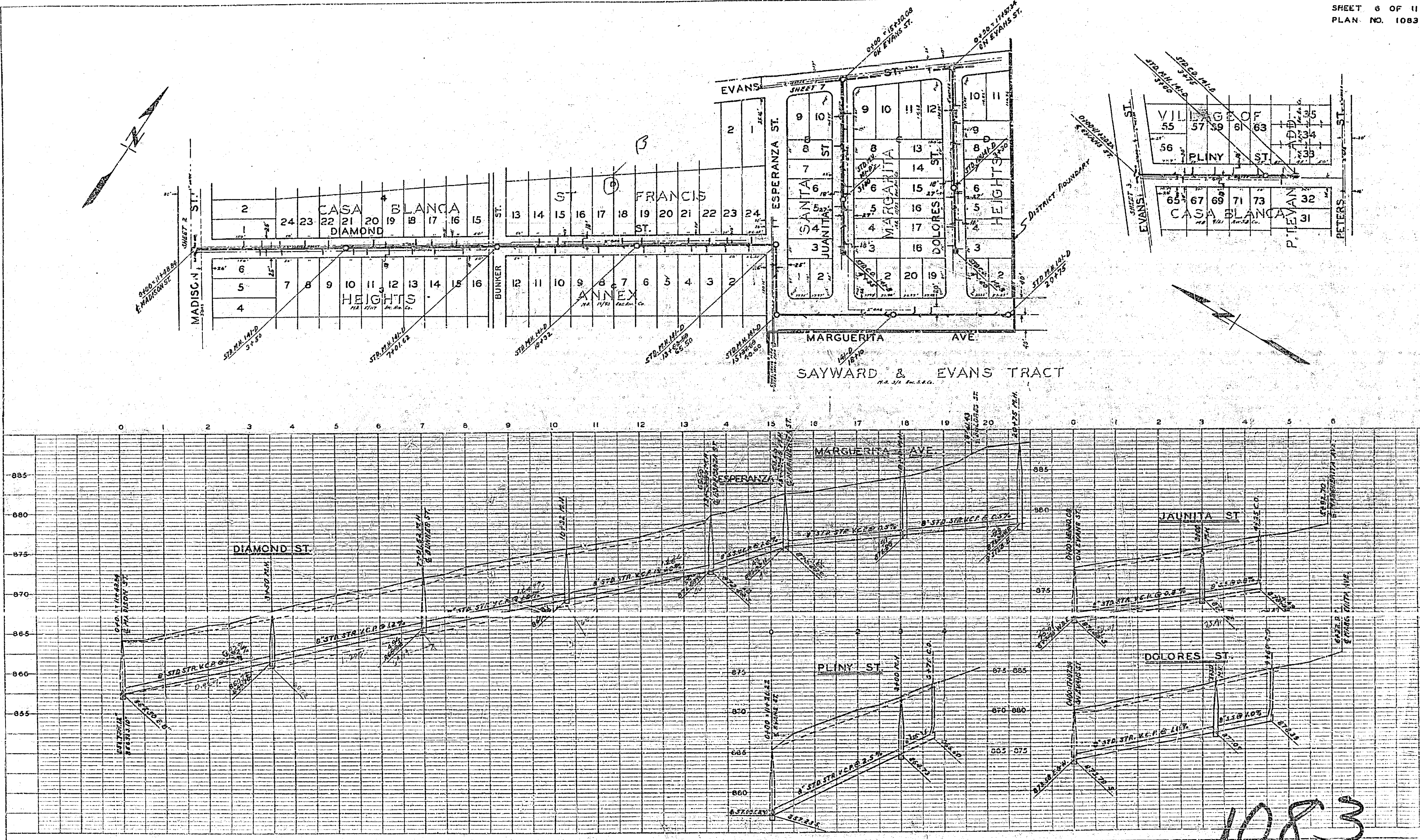
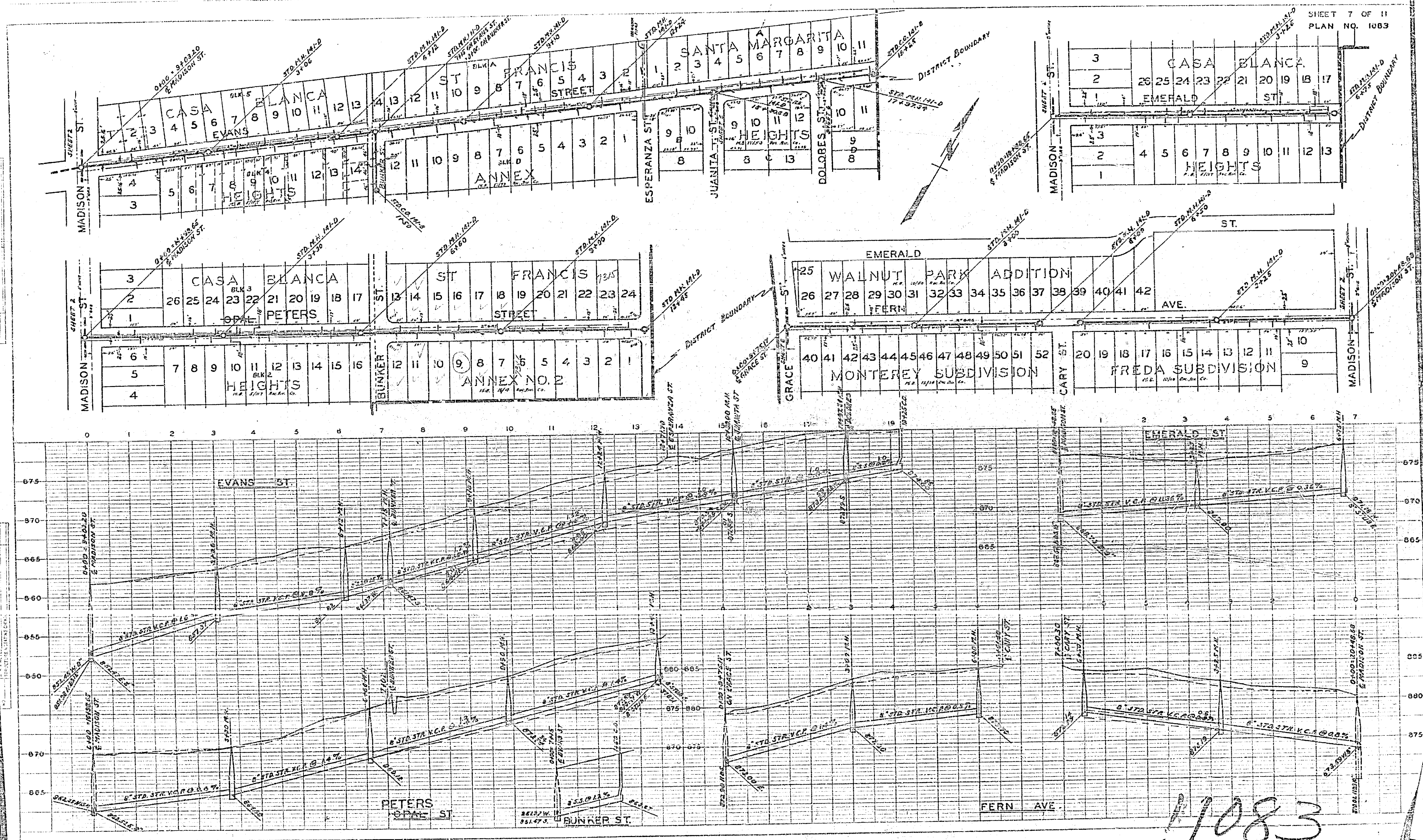


PLATE 1 - PLAN & PROFILE OF P.A. & R.E. STANDARD  
KAPTEL & EGGER CO., SAN JOSE, CALIF.  
K & E CO. NO. 500 MC

1083



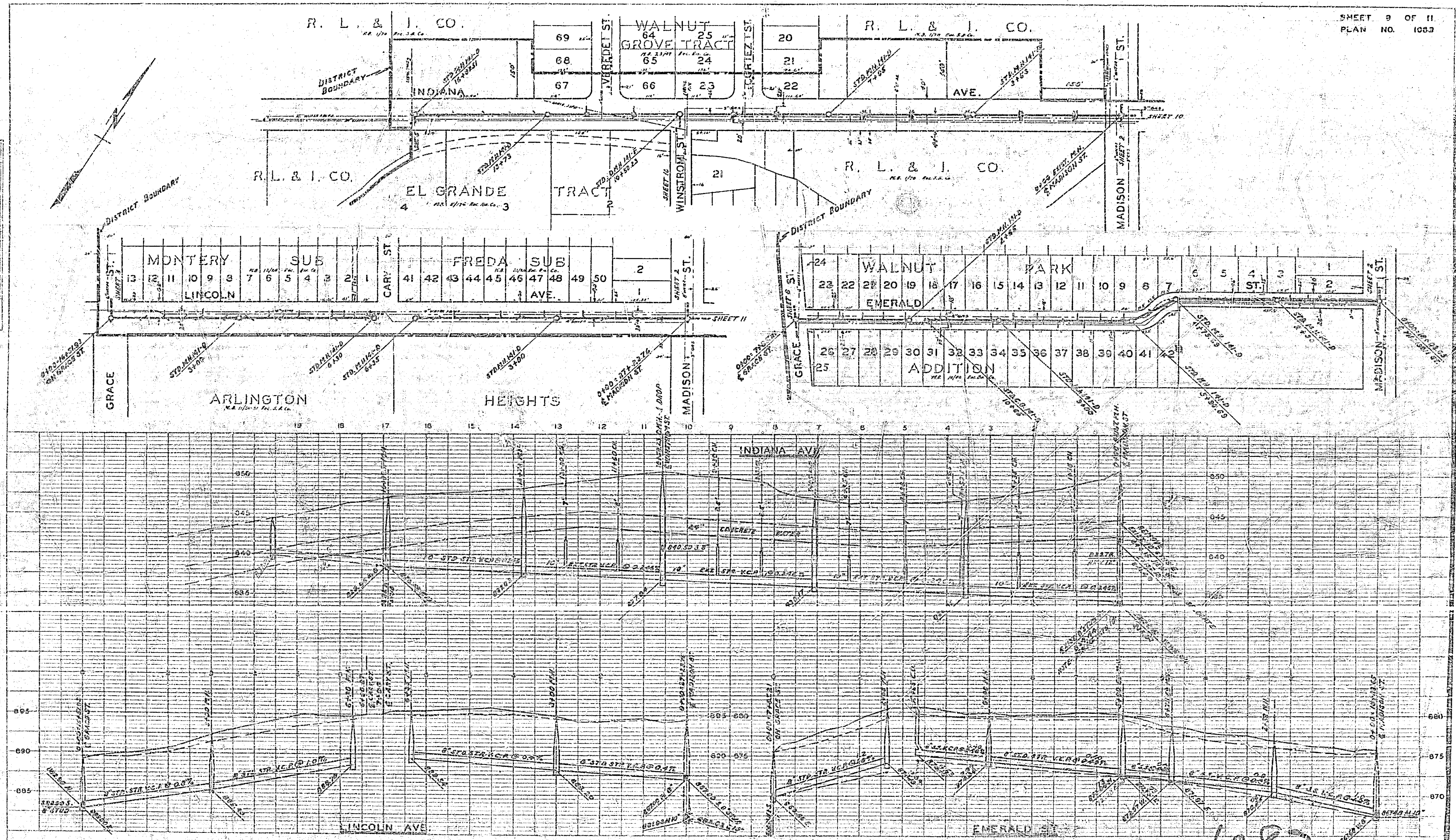


11083



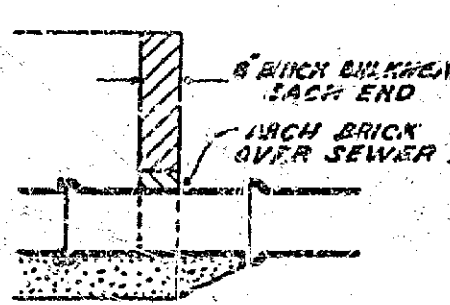
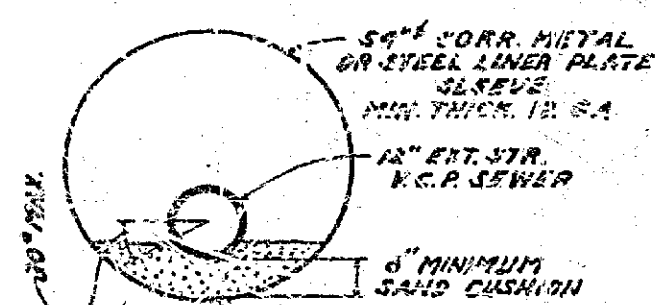
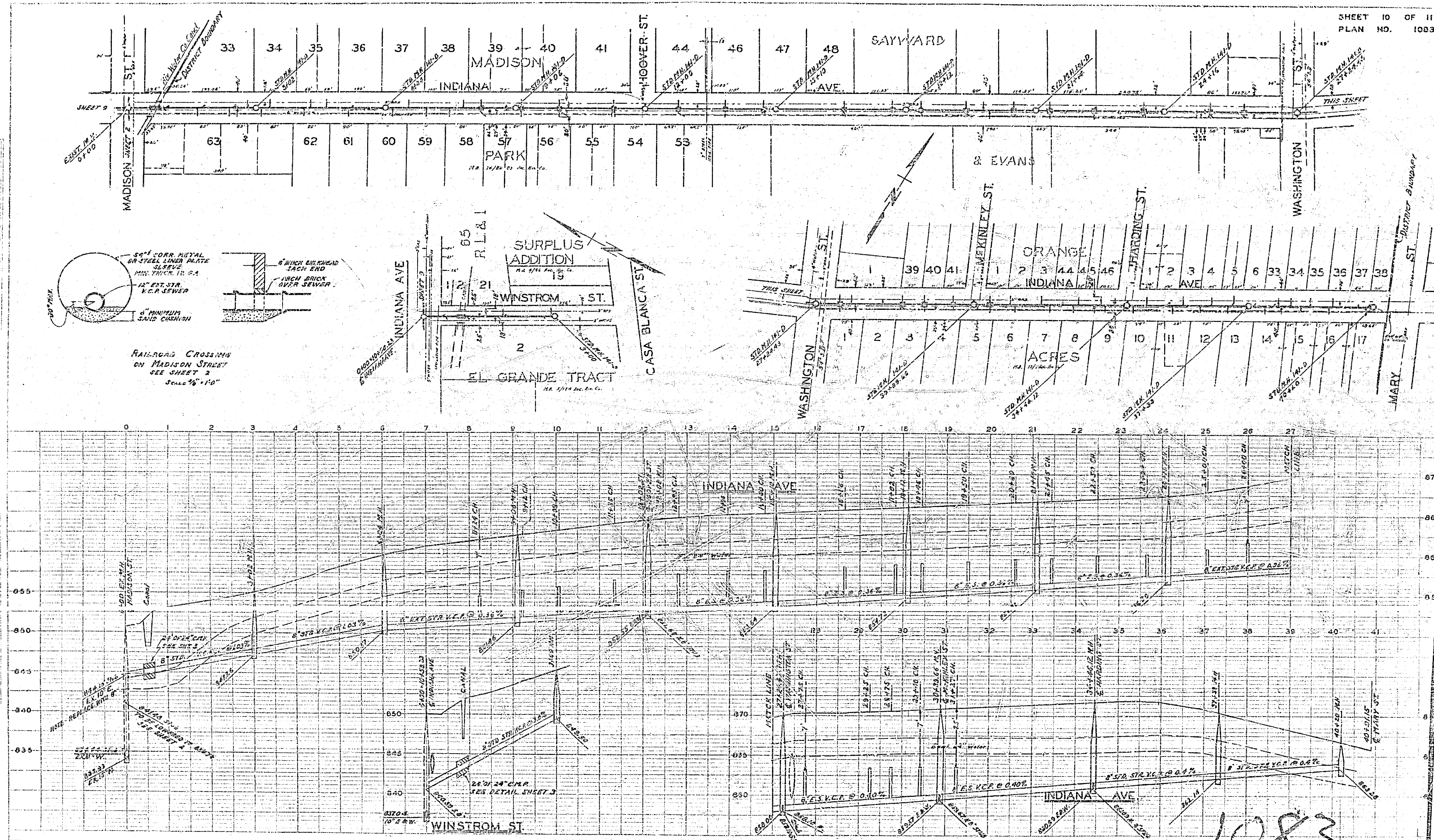






1083

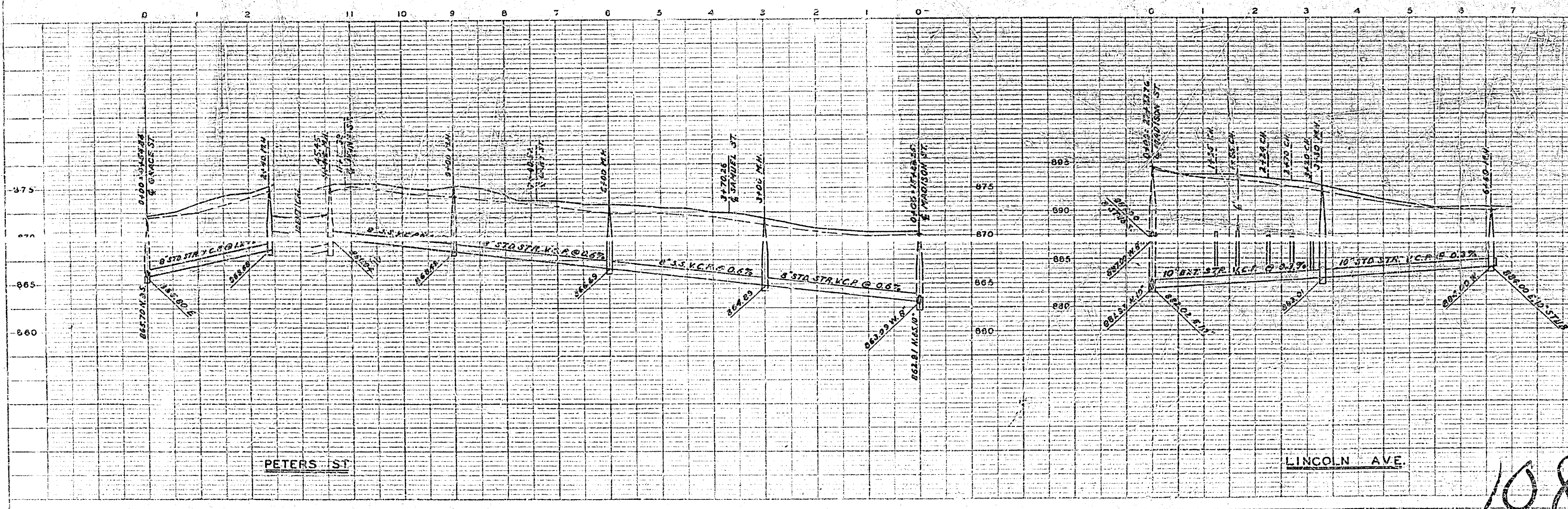
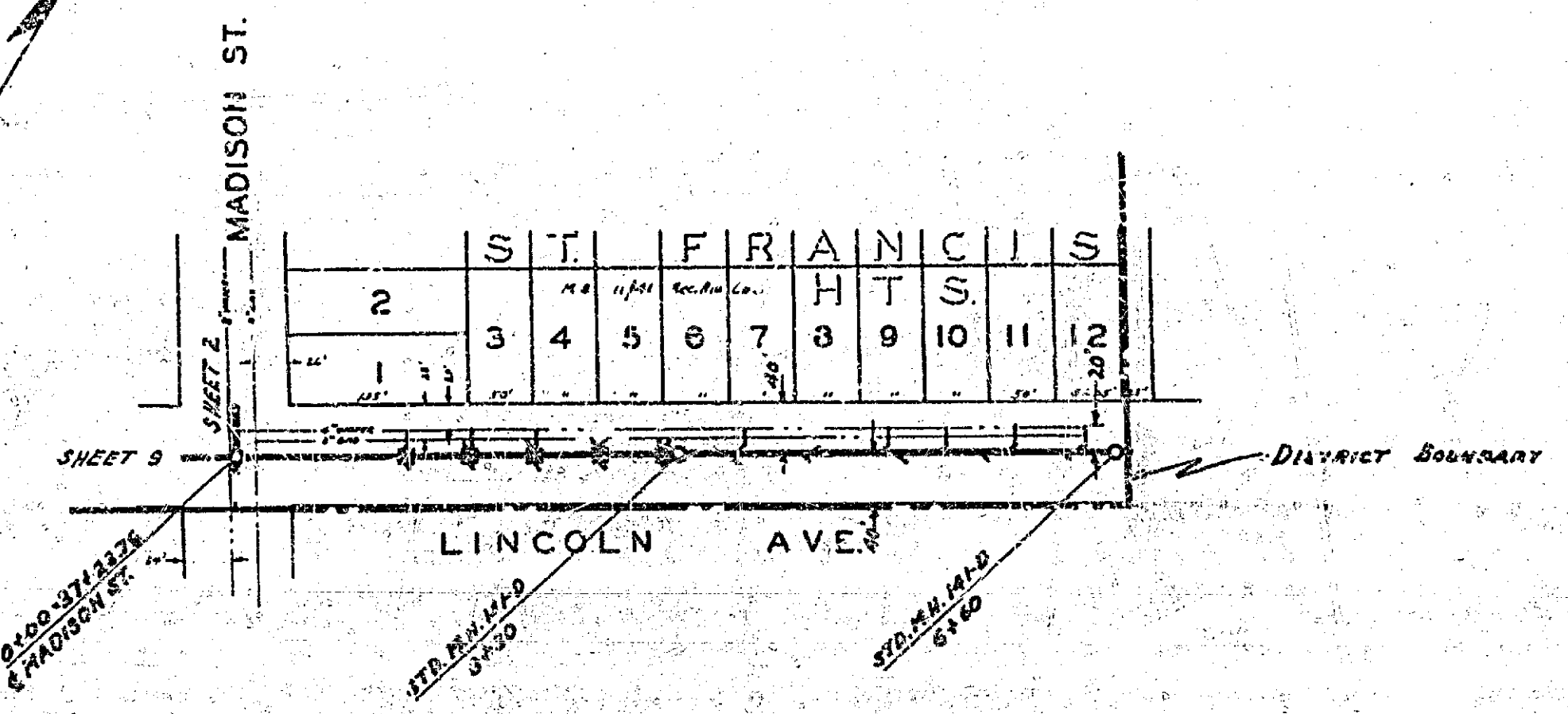
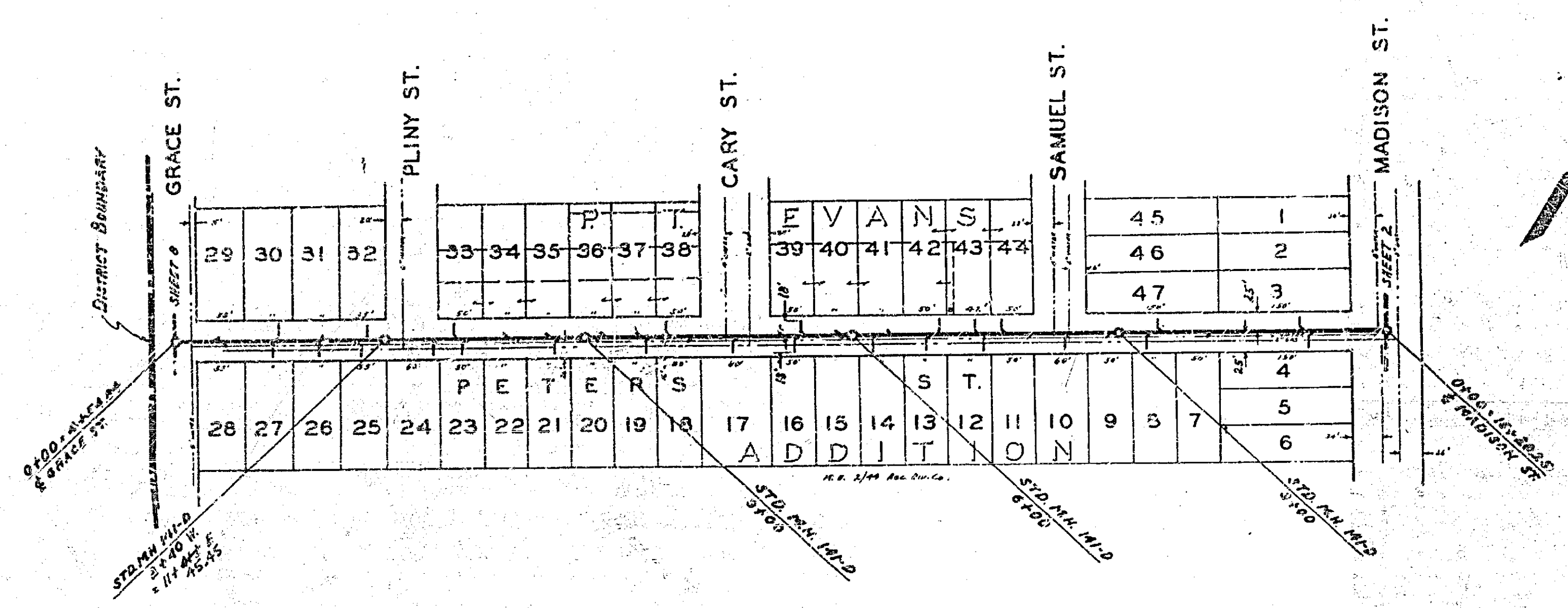




RAILROAD CROSSING  
ON MADISON STREET  
SEE SHEET 9  
SCALE 1/4" = 1'-0"

PLANNED BY THE  
ENGINEER  
AND  
SURVEYOR





1083