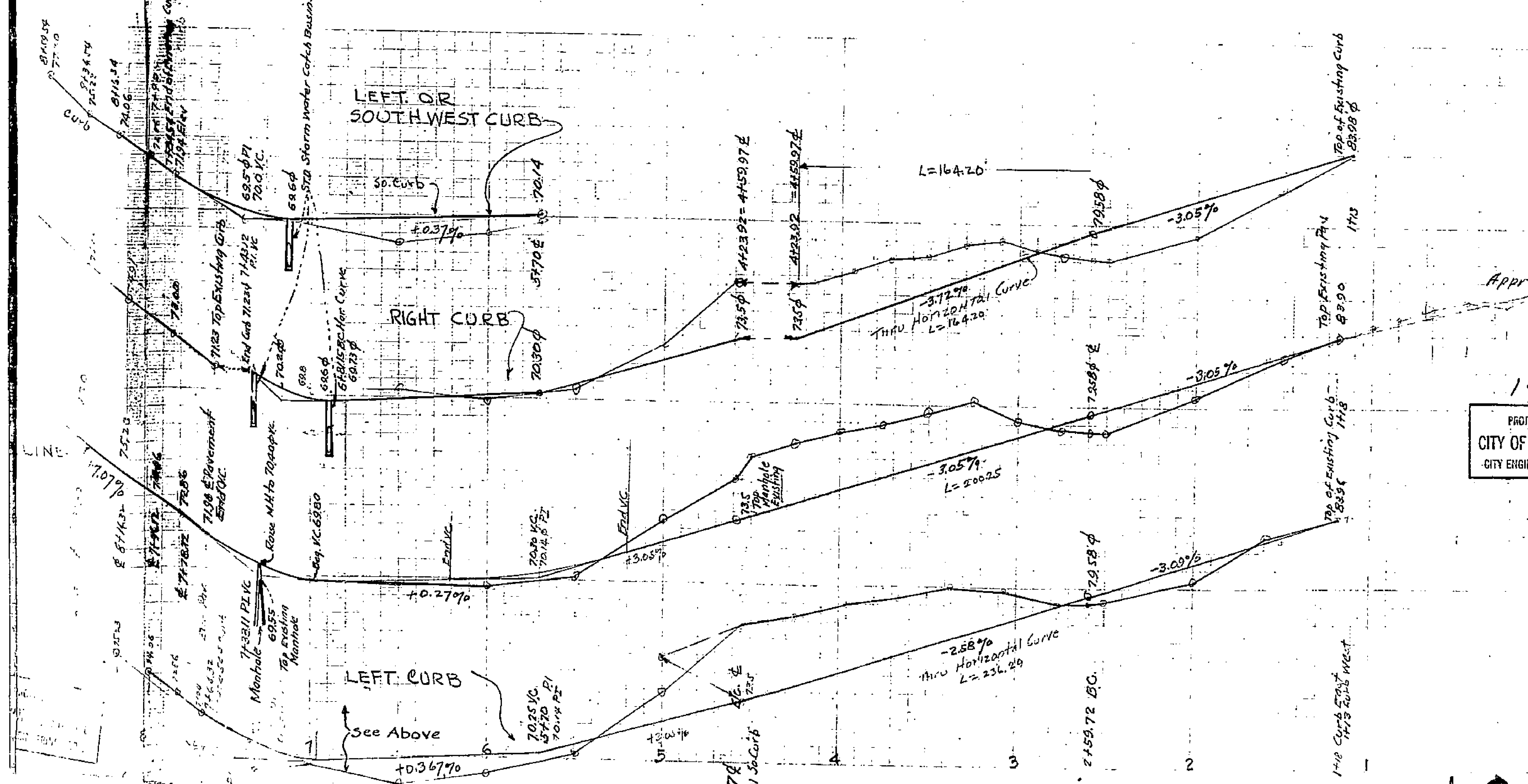
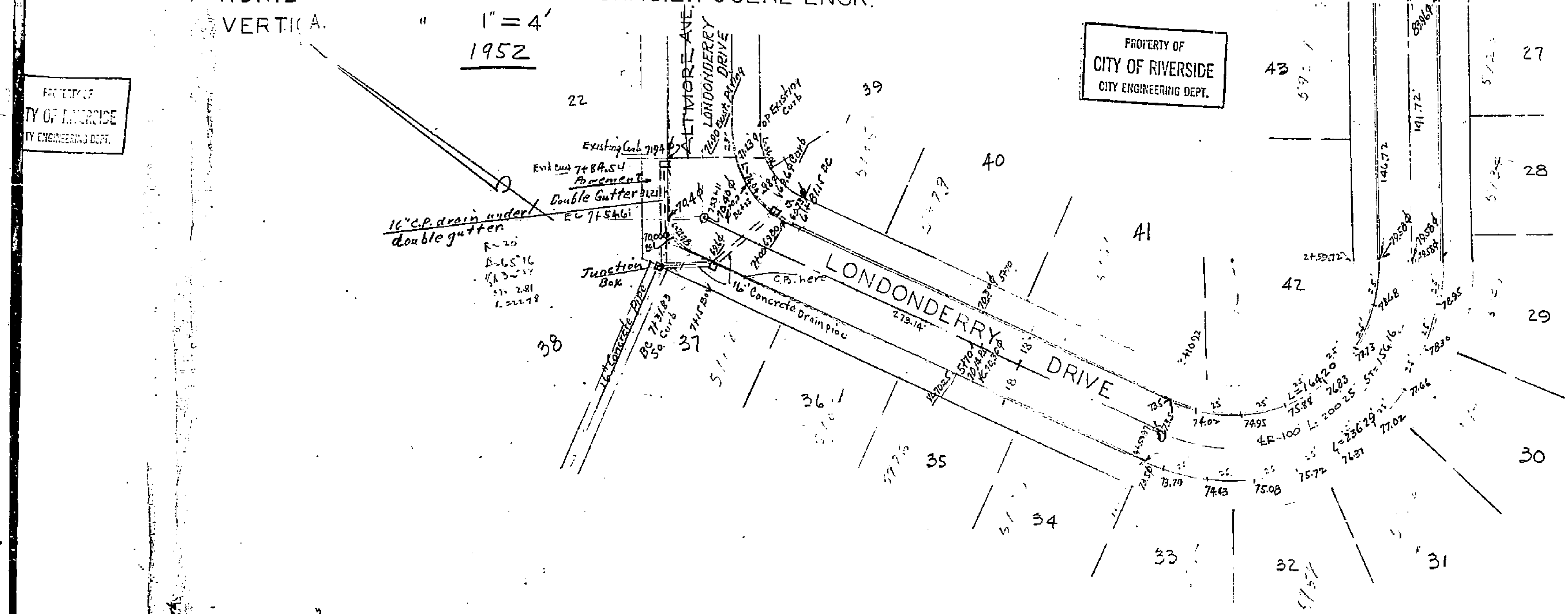


HORIZONTAL SCALE = 40' CHAS. L. FOULKE ENGR.
 VERTICAL SCALE = 1" = 4' 1952

PROPERTY OF
 CITY OF RIVERSIDE
 CITY ENGINEERING DEPT.

PROPERTY OF
 CITY OF RIVERSIDE
 CITY ENGINEERING DEPT.



Approved: *M. H. Durina*
 CITY ENGINEER

1952
 PROPERTY OF
 CITY OF RIVERSIDE
 CITY ENGINEERING DEPT.

10 86A