

MISSING

MISSING

MISSING

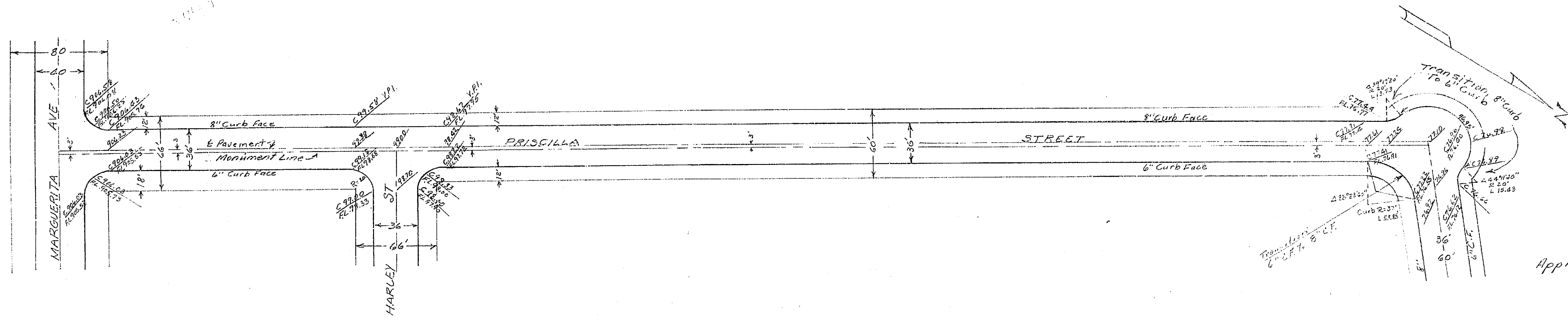
MISSING

MISSING

MISSING

PROPERTY OF
CITY OF RIVERSIDE
CITY ENGINEERING DEPT.

PROPERTY OF
CITY OF RIVERSIDE
CITY ENGINEERING DEPT.

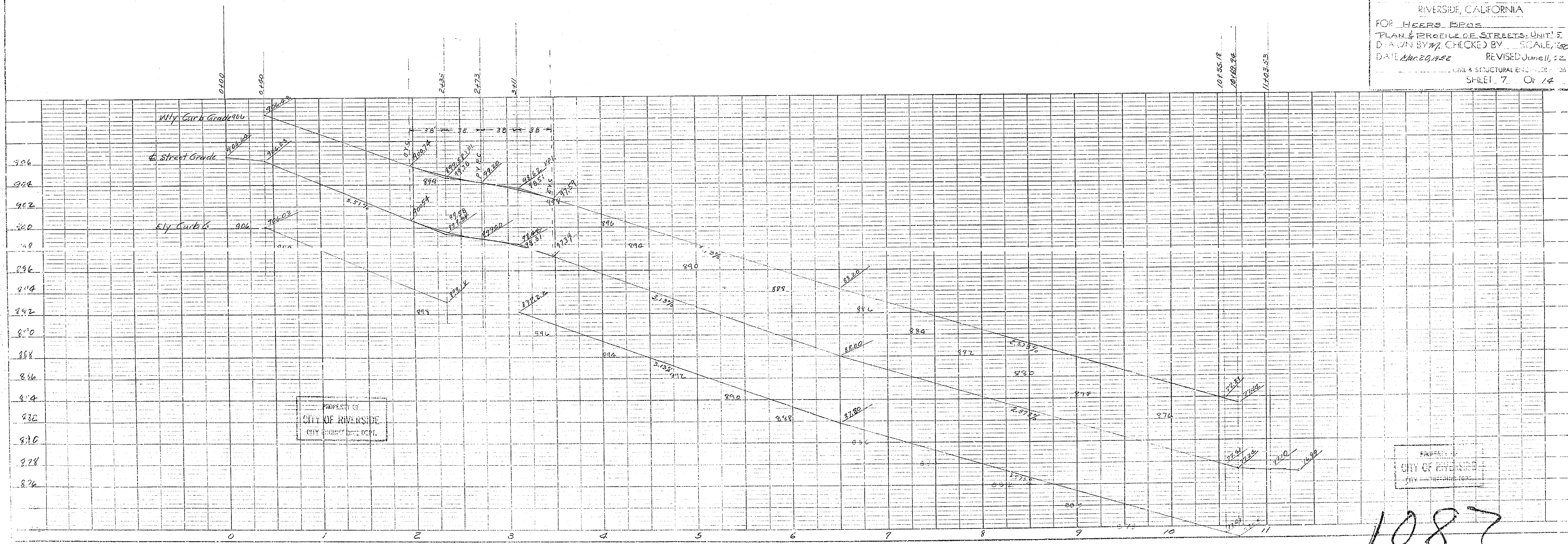


Actual Elevations are used
B.M. = 703.36 Spike Cap in Palm
Tree at NE Corner of Intersection
of Mary Street & Marguerita Avenue.

Approved M. H. Swine
City Engineer

1121087

RIVERSIDE ENGINEERING CO
RIVERSIDE, CALIFORNIA
FOR HEERS BROS
PLAN & PROFILE OF STREETS - UNIT 5
DRAWN BY W. J. CHECKED BY SCALE 1/8"
DATE Mar 20, 1952 REVISED June 11, 52
CITY & STRUCTURAL ENGINEERS
SHEET 7 OF 14



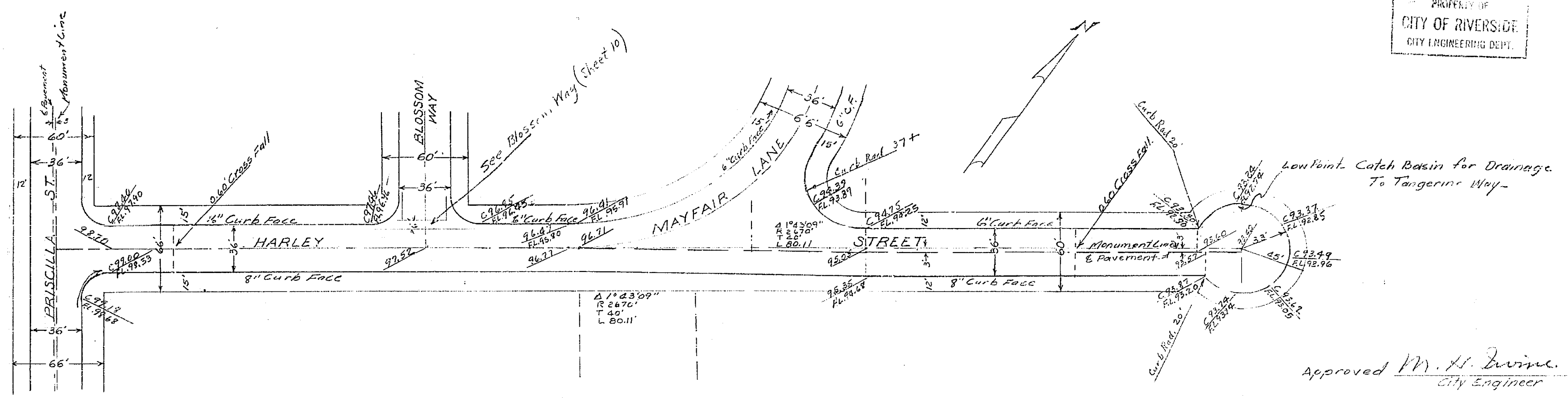
PROPERTY OF
CITY OF RIVERSIDE
CITY ENGINEERING DEPT.

PROPERTY OF
CITY OF RIVERSIDE
CITY ENGINEERING DEPT.

1087

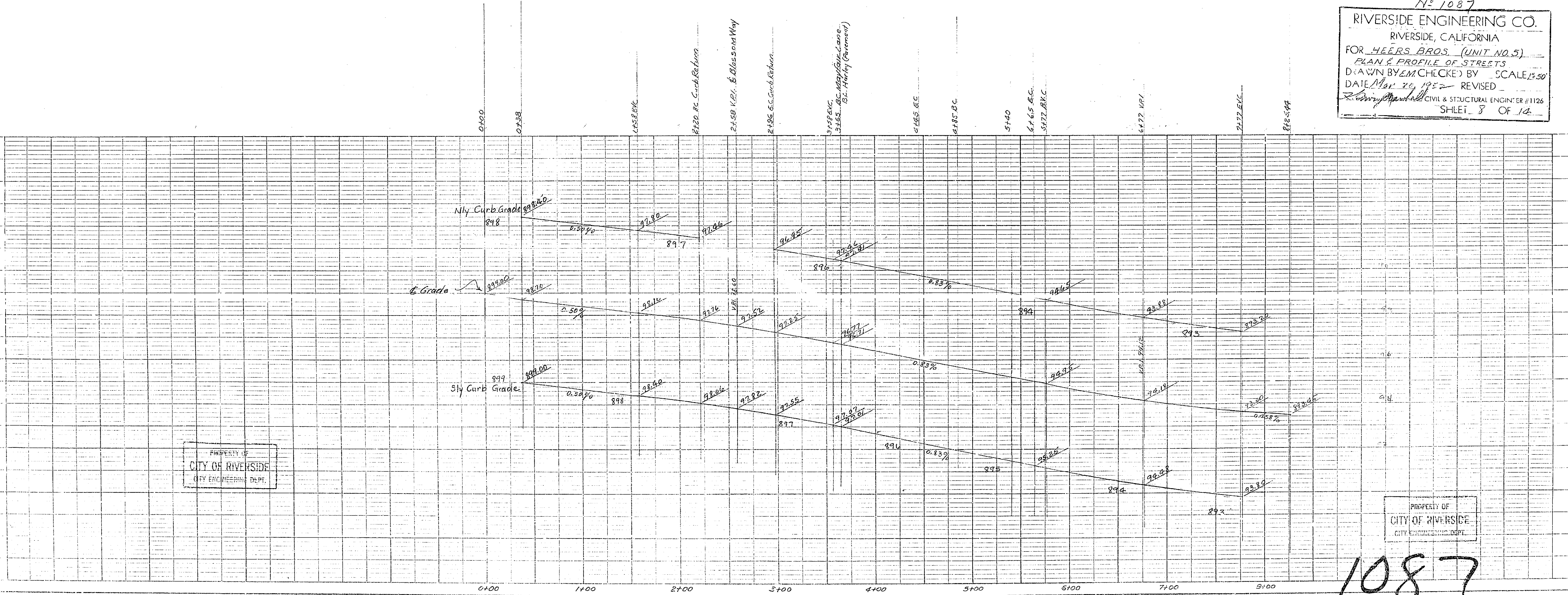
PROPERTY OF
CITY OF RIVERSIDE
CITY ENGINEERING DEPT.

PROPERTY OF
CITY OF RIVERSIDE
CITY ENGINEERING DEPT.



Approved *M. H. Irvine*
City Engineer

N^o 1087
RIVERSIDE ENGINEERING CO.
RIVERSIDE, CALIFORNIA
FOR HEERS BROS. (UNIT NO. 5)
PLAN & PROFILE OF STREETS
DRAWN BY E.M. CHUCKER BY SCALE 1/8"=1'-00"
DATE Mar 26, 1952 REVISED
Robert Marshall CIVIL & STRUCTURAL ENGINEER #1126
SHEET 3 OF 10



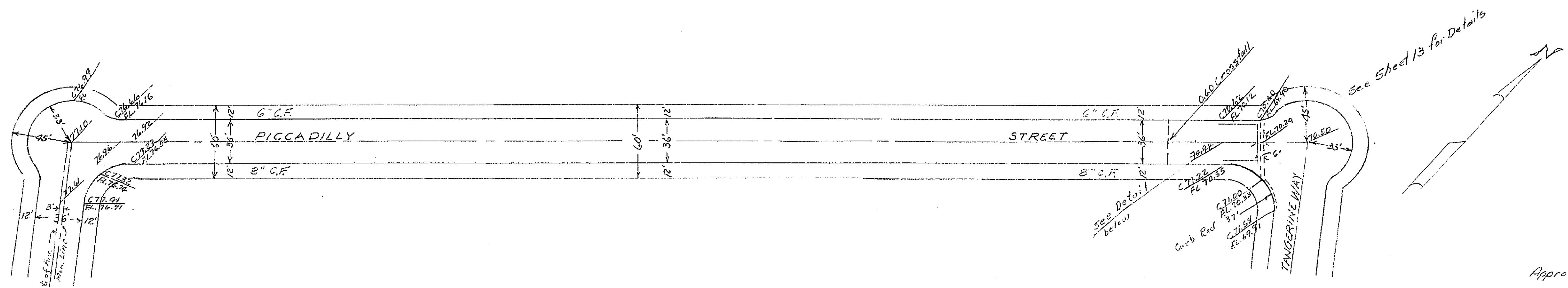
PROPERTY OF
CITY OF RIVERSIDE
CITY ENGINEERING DEPT.

PROPERTY OF
CITY OF RIVERSIDE
CITY ENGINEERING DEPT.

1087

PROPERTY OF
CITY OF RIVERSIDE
CITY ENGINEERING DEPT.

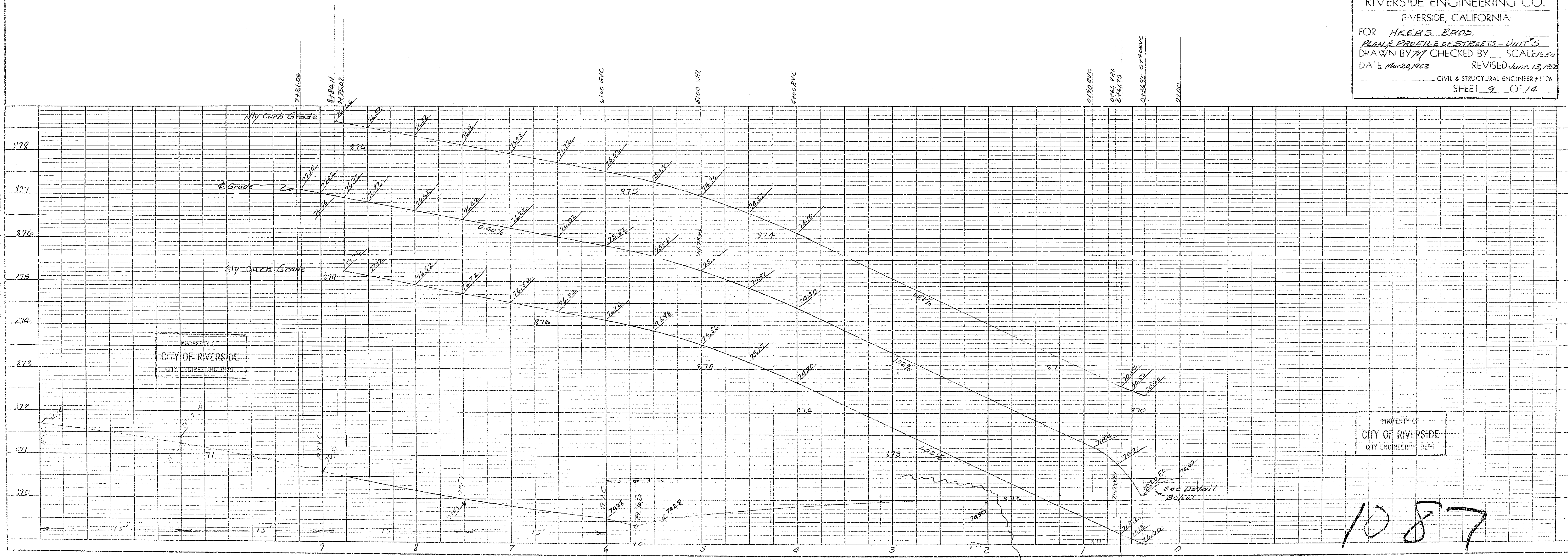
PROPERTY OF
CITY OF RIVERSIDE
CITY ENGINEERING DEPT.



Approved *M. V. Swinn*
City Engineer

N=10.87

RIVERSIDE ENGINEERING CO.
RIVERSIDE, CALIFORNIA
FOR HEERS ERCS
PLAN & PROFILE OF STREETS - UNIT'S
DRAWN BY WZ CHECKED BY ... SCALE 1/2"=50'
DATE Mar 20, 1952 REVISED June 13, 1952
CIVIL & STRUCTURAL ENGINEER #1126
SHEET 9 OF 14



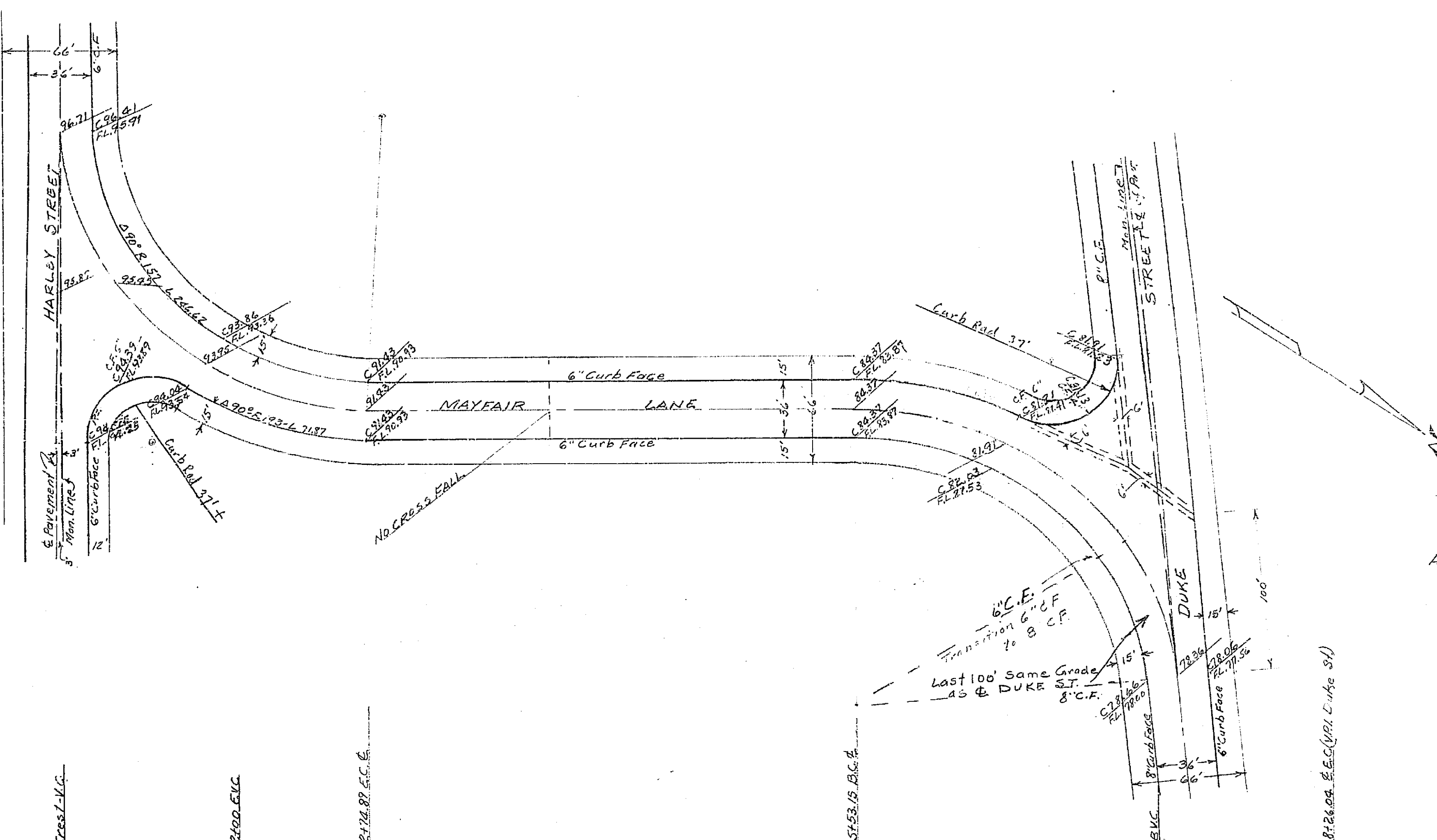
PROPERTY OF
CITY OF RIVERSIDE
CITY ENGINEERING DEPT.

PROPERTY OF
CITY OF RIVERSIDE
CITY ENGINEERING DEPT.

1087

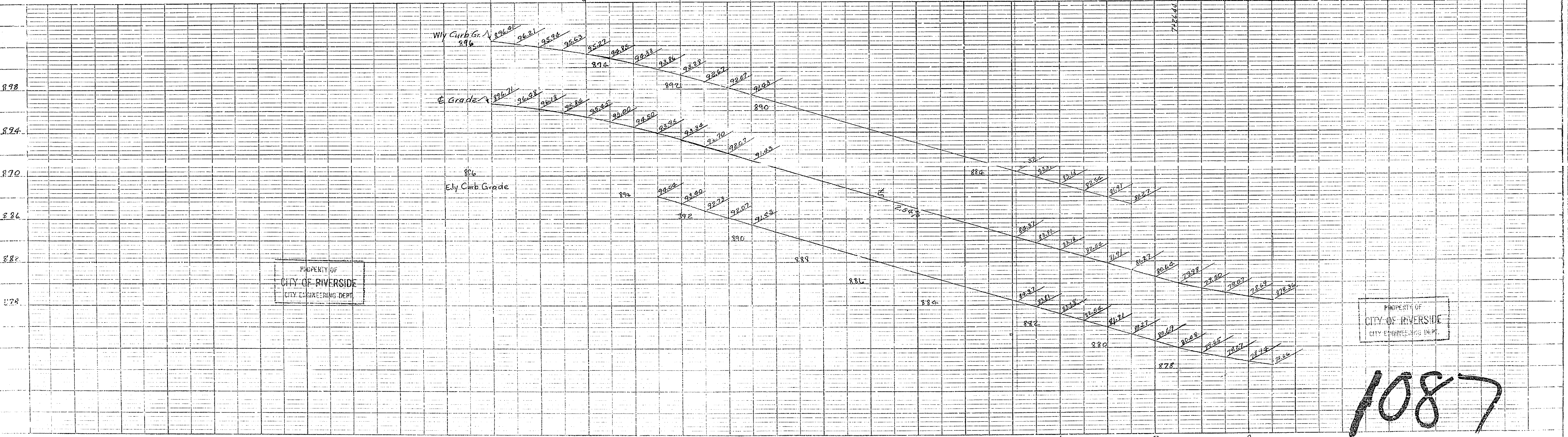
PROPERTY OF
CITY OF RIVERSIDE
CITY ENGINEERING DEPT.

PROPERTY OF
CITY OF RIVERSIDE
CITY ENGINEERING DEPT.



Approved *M. H. Irvine*
City Engineer

N^o 1087
RIVERSIDE ENGINEERING CO.
RIVERSIDE, CALIFORNIA
FOR HEERS BROS.
PLAN & PROFILE OF STREETS, UNIT NO. 5.
DRAWN BY *ZK* CHECKED BY _____ SCALE 1"=50'
DATE *Mar. 20, 1952* REVISED *June 9, 1952*
Z. Irving Applebell CIVIL & STRUCTURAL ENGINEER #1126
SHEET 11 OF 14



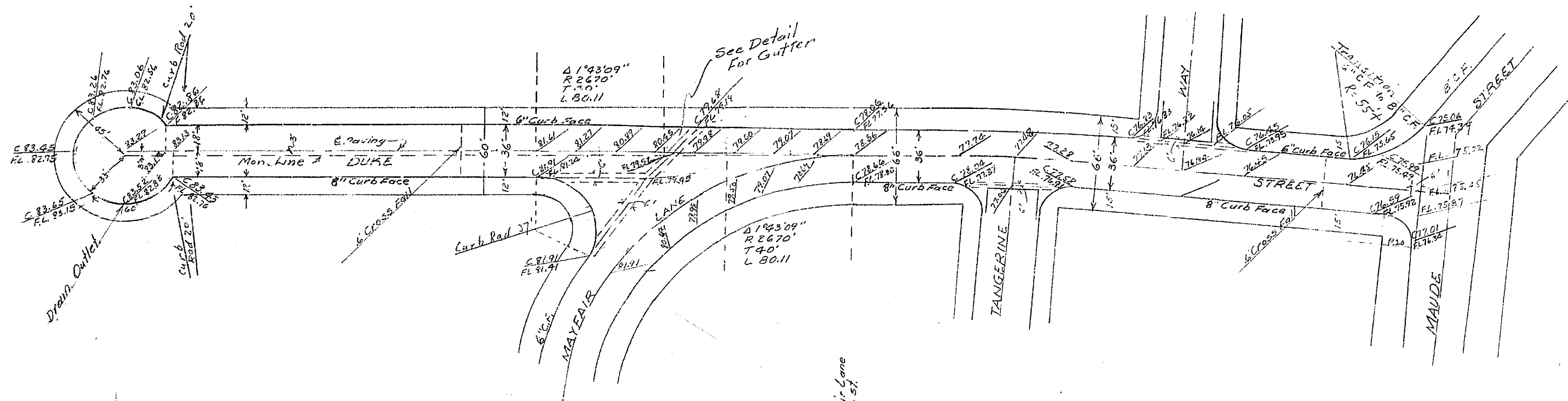
PROPERTY OF
CITY OF RIVERSIDE
CITY ENGINEERING DEPT.

PROPERTY OF
CITY OF RIVERSIDE
CITY ENGINEERING DEPT.

1087

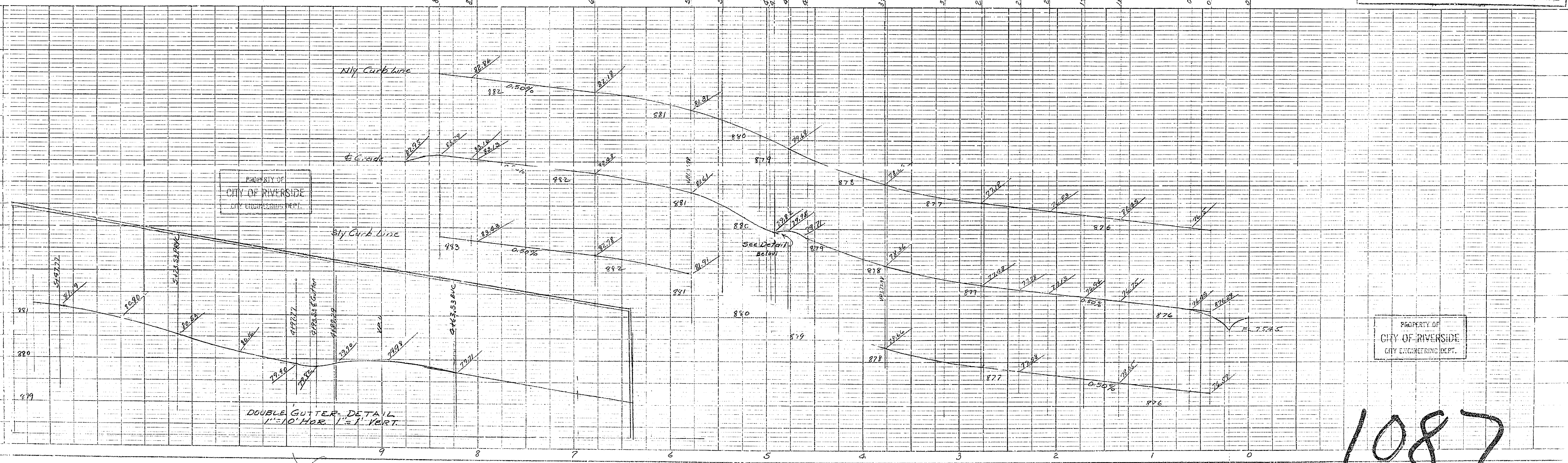
PROPERTY OF
CITY OF RIVERSIDE
CITY ENGINEERING DEPT.

PROPERTY OF
CITY OF RIVERSIDE
CITY ENGINEERING DEPT.



Approved M. J. Irvine
City Engineer

No 1087
RIVERSIDE ENGINEERING CO.
RIVERSIDE, CALIFORNIA
FOR HEERS BROS.
PLAN & PROFILE OF STREETS, UNIT #5.
DRAWN BY M. CHECKED BY ... SCALE 1/8\"/>

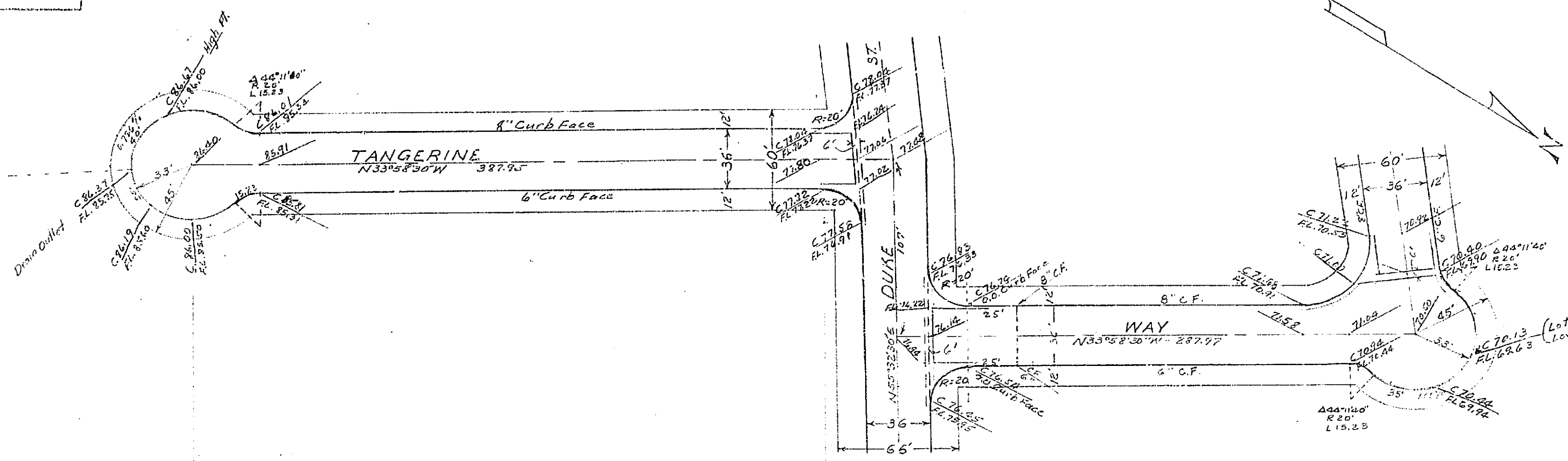
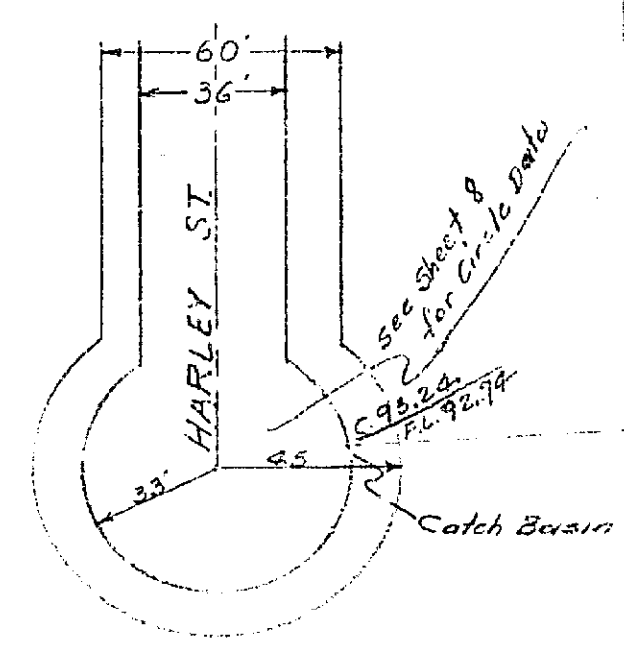


PROPERTY OF
CITY OF RIVERSIDE
CITY ENGINEERING DEPT.

PROPERTY OF
CITY OF RIVERSIDE
CITY ENGINEERING DEPT.

1087

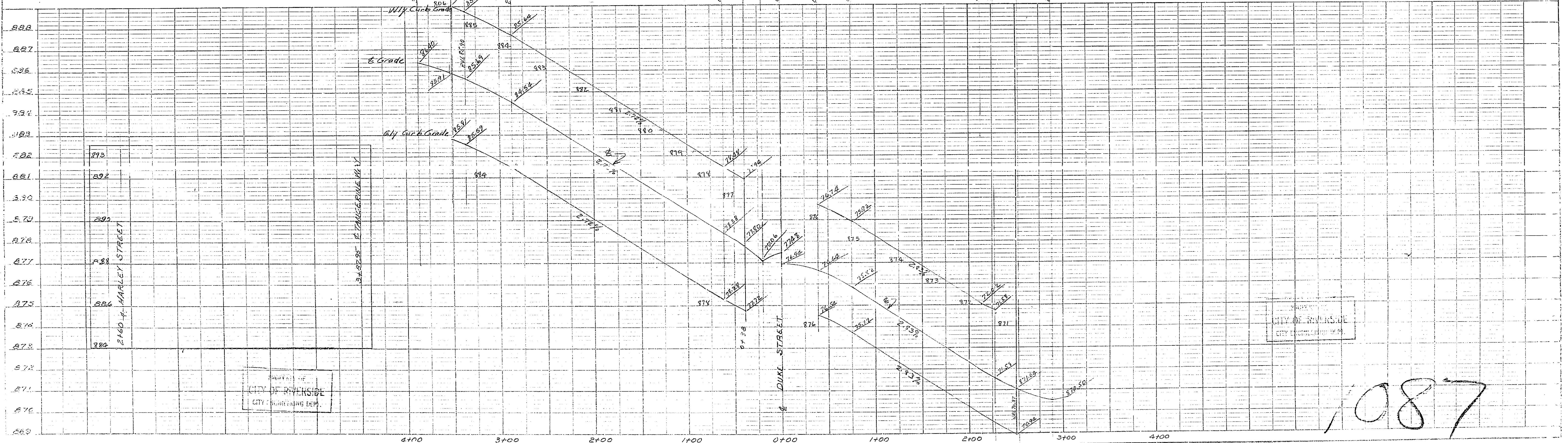
CITY OF RIVERSIDE
CITY ENGINEERING DEPT.



CITY OF RIVERSIDE
CITY ENGINEERING DEPT.

Approved *M. H. Swinn*
City Engineer
N. 1087

RIVERSIDE ENGINEERING CO.
RIVERSIDE, CALIFORNIA
FOR *Asst. Engr*
Plan & Profile of Streets, Unit #6
DRAWN BY _____ CHECKED BY _____ SCALE _____
DATE *Mar. 20, 1952* REVISED *June 12, 1952*
R. Spring CIVIL & STRUCTURAL ENGINEER
SHEET 13 OF 14



CITY OF RIVERSIDE
CITY ENGINEERING DEPT.

CITY OF RIVERSIDE
CITY ENGINEERING DEPT.

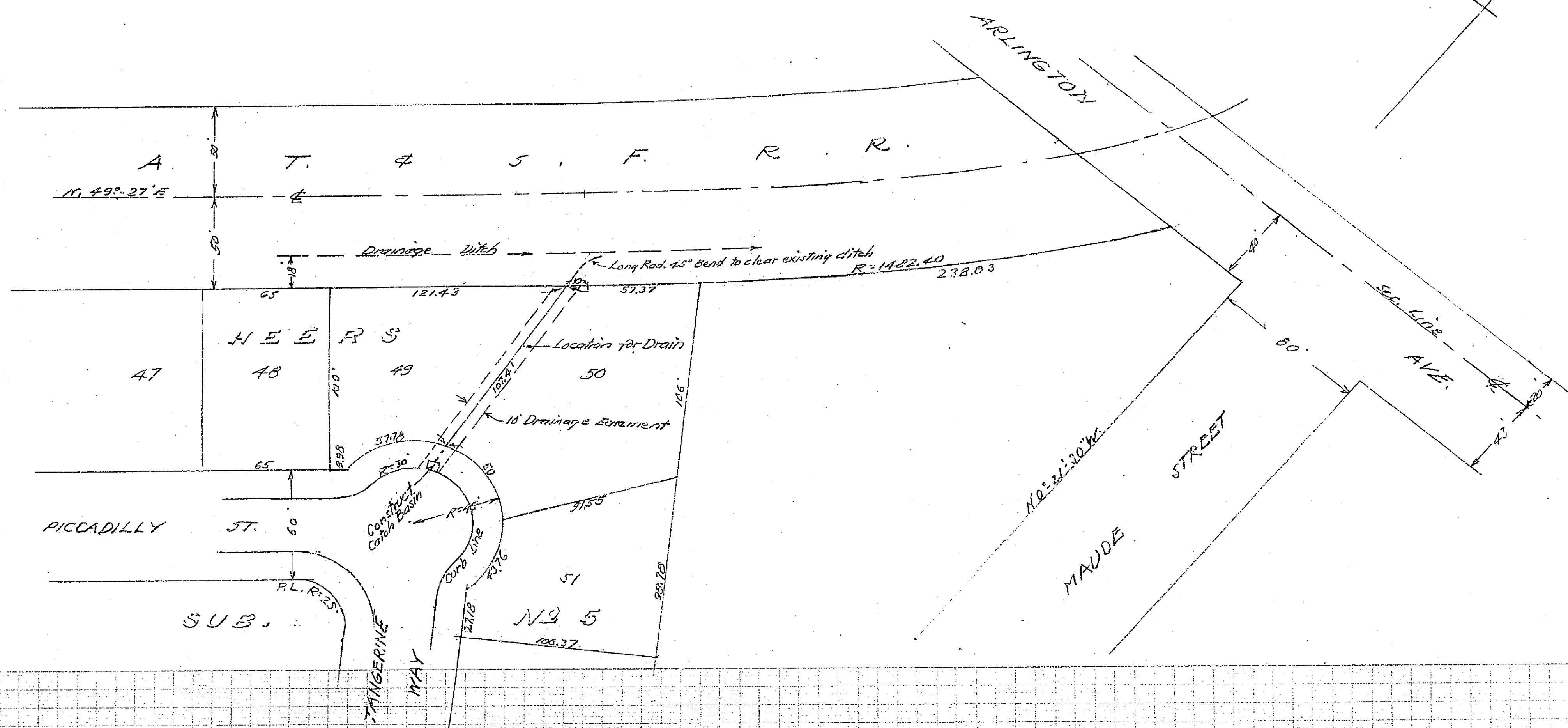
1087

PROPERTY OF
CITY OF RIVERSIDE
CITY ENGINEERING DEPT.

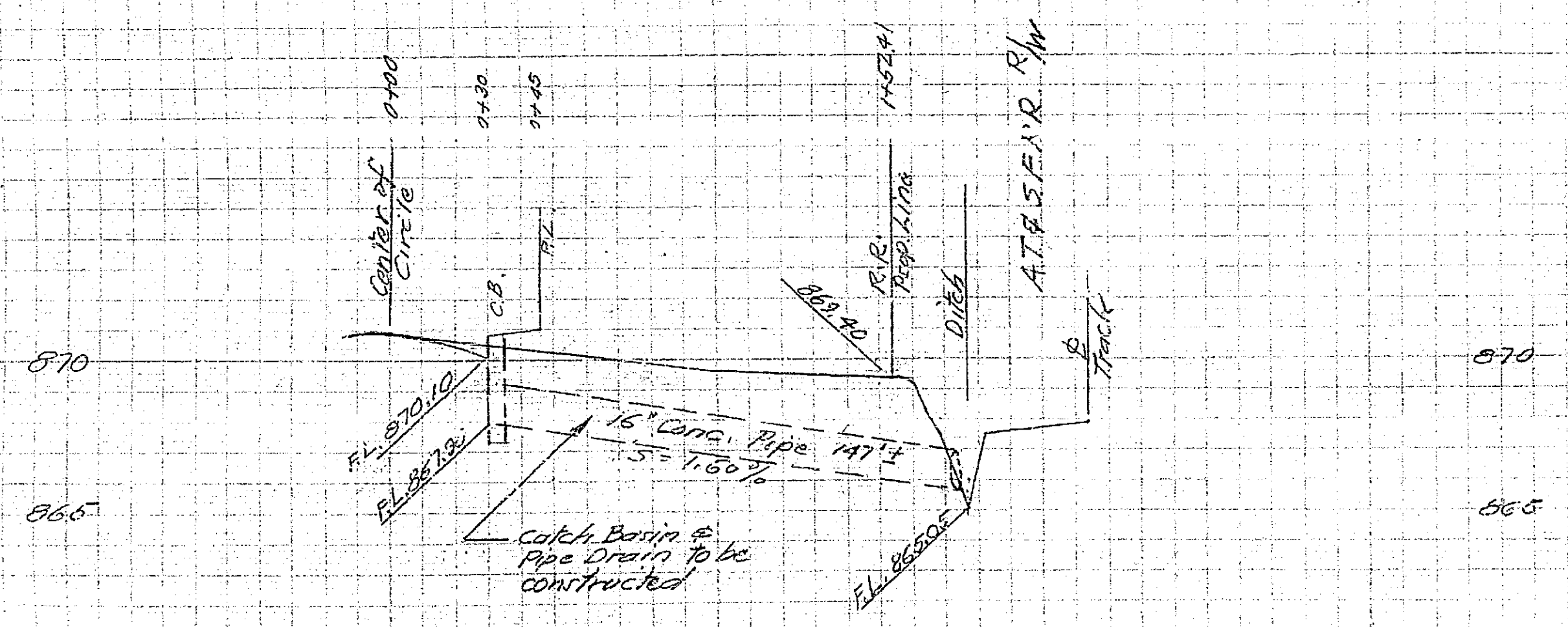
PROPERTY OF
CITY OF RIVERSIDE
CITY ENGINEERING DEPT.

PLAN N^o 1087-A
SHOWING LOCATION & PROFILE OF
PROPOSED DRAIN
FROM HEERS SUBDIVISION N^o 5
CITY OF RIVERSIDE, CALIFORNIA

SCALES HOR. 1" = 40 FT.
VERT. 1" = 4 FT.
M. H. Irvine
CITY ENGINEER



SHEET 14 OF 14



PROPERTY OF
CITY OF RIVERSIDE
CITY ENGINEERING DEPT.

PROPERTY OF
CITY OF RIVERSIDE
CITY ENGINEERING DEPT.

1087A