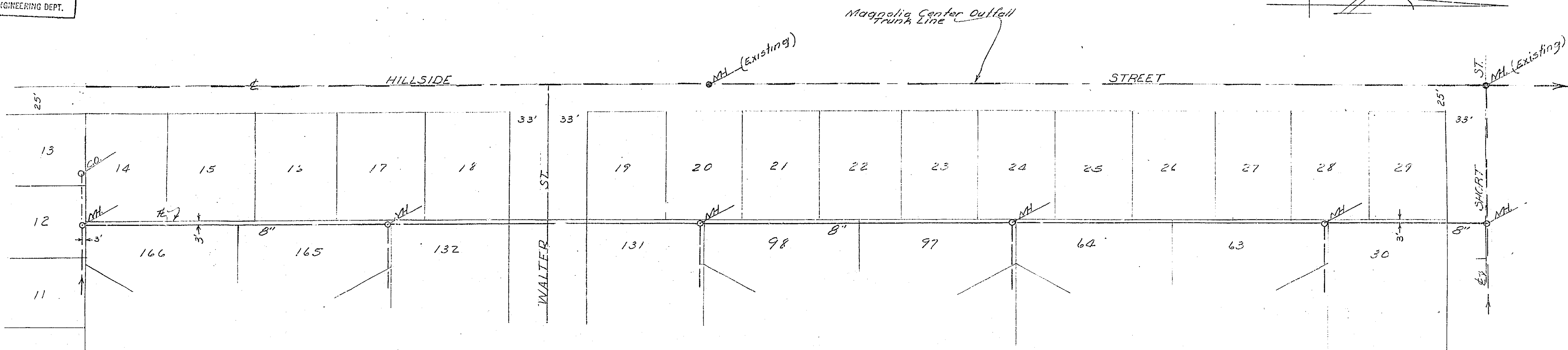


PROPERTY OF
CITY OF RIVERSIDE
CITY ENGINEERING DEPT.

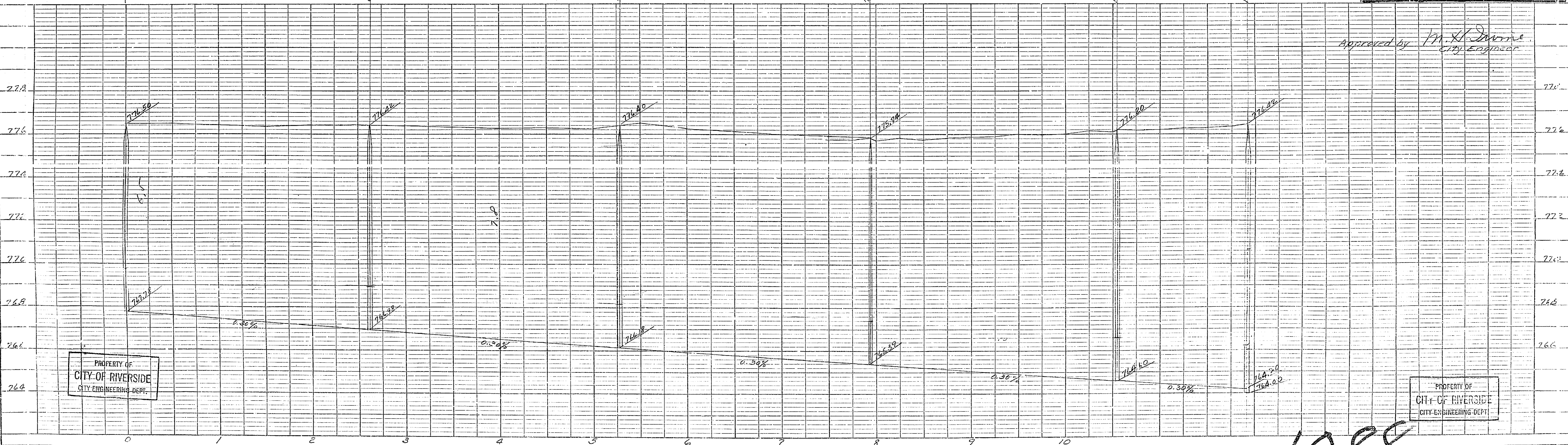


PROPERTY OF
CITY OF RIVERSIDE
CITY ENGINEERING DEPT.

Note:
Actual Elevations used.
B.M. = 847.498', Spike & lead in
Granite Boulder Approx. 1990, W. &
150' N. of Intersection of Hillside
St. & W. Central Avenue.

N^o 1088
RIVERSIDE ENGINEERING CO.
RIVERSIDE, CALIFORNIA
FOR HEERS BROS.
Plan & Profile of Sewers - Unit No. 6
DRAWN BY Z.C. CHECKED BY SCALE 1/8" = 1'-0"
DATE 9-29-52 REVISED 10-14-52
CIVIL & STRUCTURAL ENGINEER #112
SHEET 1 OF 7

Approved by M. H. Dwyer
City Engineer



PROPERTY OF
CITY OF RIVERSIDE
CITY ENGINEERING DEPT.

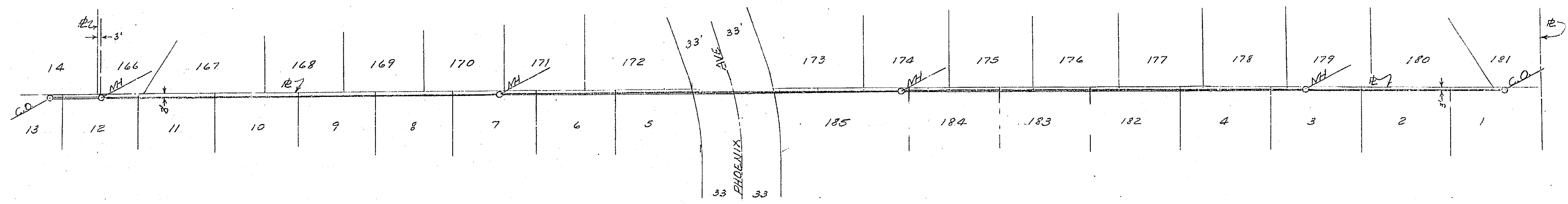
PROPERTY OF
CITY OF RIVERSIDE
CITY ENGINEERING DEPT.

PLATE 1 - PLAN - PROFILE O. P. R. & N. E. STANDARD
KIEFFEL & ESSER CO., NEW YORK.

K & E Co. No. 345-1 MADE IN U.S.A. - 8/24/52

1088

PROPERTY OF
CITY OF RIVERSIDE
CITY ENGINEERING DEPT.



PROPERTY OF
CITY OF RIVERSIDE
CITY ENGINEERING DEPT.

1088
RIVERSIDE ENGINEERING CO.
RIVERSIDE, CALIFORNIA
FOR HEERS BROS.
Plan & Profile of Sewers-Unit No. 6
DRAWN BY *W. H. Davis* CHECKED BY *W. H. Davis* SCALE 1/50
DATE 9-29-52 REVISED 10-14-52
W. H. Davis CIVIL & STRUCTURAL ENGINEER #1126
SHEET 2 OF 7

approved by *W. H. Davis*
City Engineer

PROPERTY OF
CITY OF RIVERSIDE
CITY ENGINEERING DEPT.

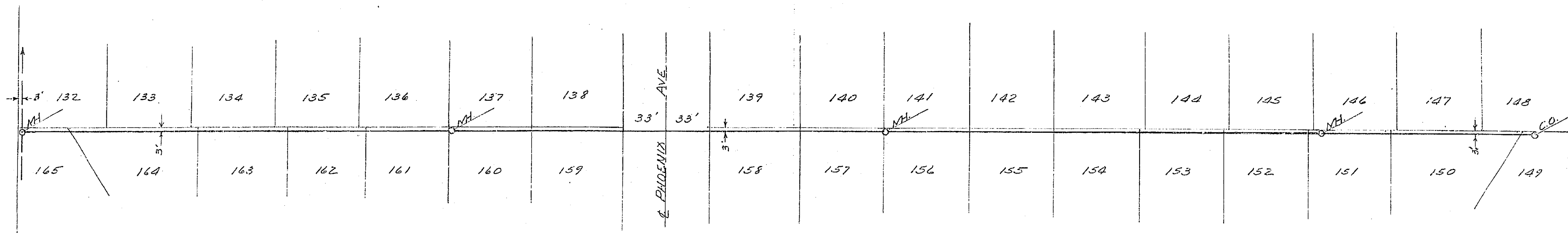
PROPERTY OF
CITY OF RIVERSIDE
CITY ENGINEERING DEPT.

PLATE 1 - PLAN - PROFILE O. P. H. & R. E. STANDARD
KEUFFEL & ESSER CO., NEW YORK.

K & E Co. No. 345-1 MADE IN U.S.A. 1954

1088

PROPERTY OF
CITY OF RIVERSIDE
CITY ENGINEERING DEPT.

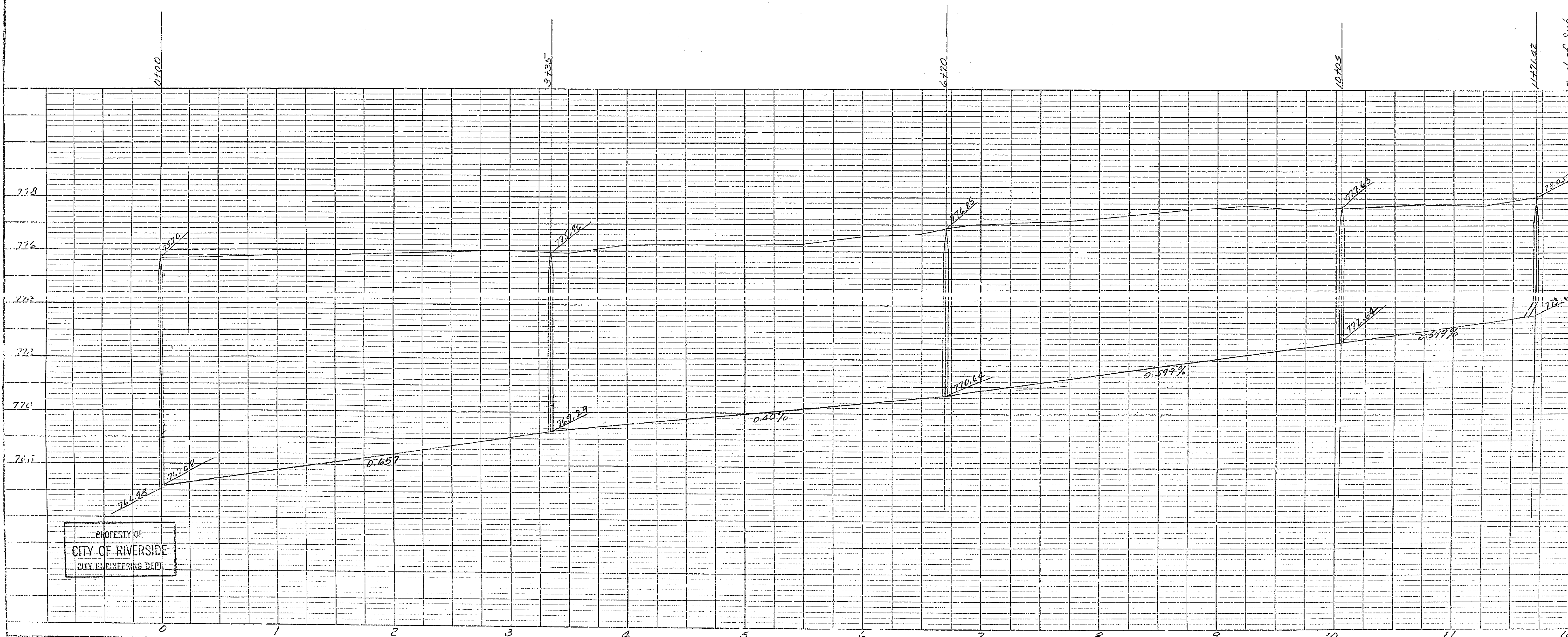


PROPERTY OF
CITY OF RIVERSIDE
CITY ENGINEERING DEPT.

N-1088
RIVERSIDE ENGINEERING CO.
RIVERSIDE, CALIFORNIA
FOR HEERS BROS.
Plan & Profile of Sewers - Unit No. 12
DRAWN BY W. CHECKED BY SCALE 1"=50'
DATE 9-21-52 REVISED 10-14-52
Exp. 10/14/52 CIVIL & STRUCTURAL ENGINEER #1126
SHEET 3 OF 7

Approved by M. H. Jensen
City Engineer

PROPERTY OF
CITY OF RIVERSIDE
CITY ENGINEERING DEPT.



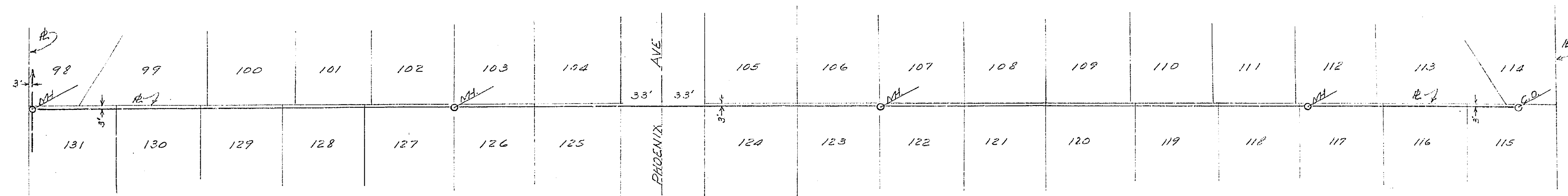
PROPERTY OF
CITY OF RIVERSIDE
CITY ENGINEERING DEPT.

PLATE 1 - PLAN - PROFILE, O. P. R. & R. L. STANDARD
KEUFFEL & ESSER CO., NEW YORK

K & E CO. No. 345-1 MADE IN U.S.A. 50000

1088

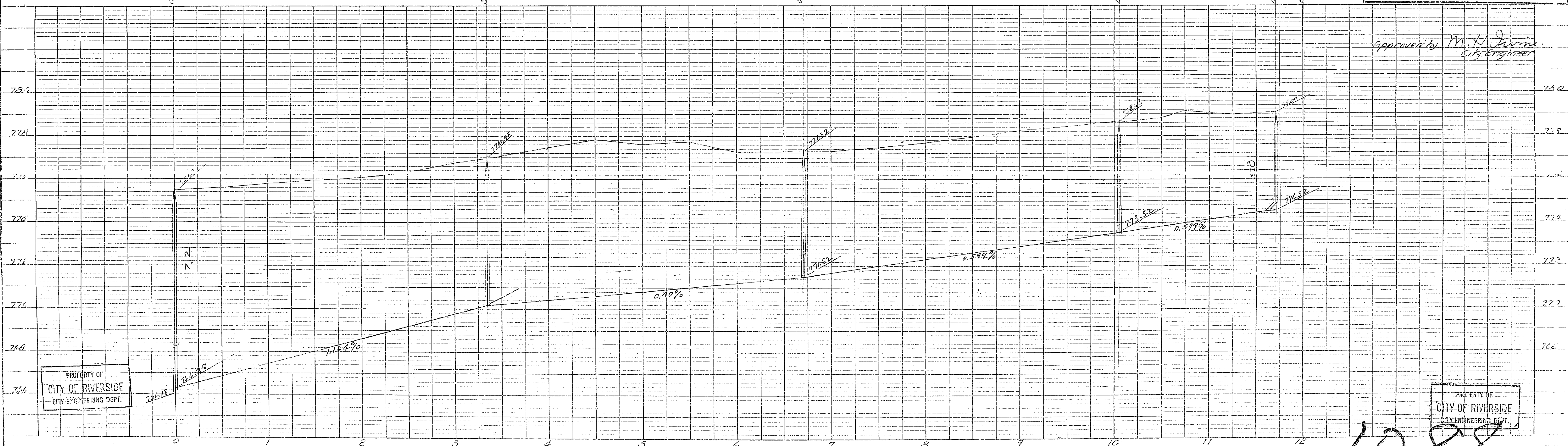
PROPERTY OF
CITY OF RIVERSIDE
CITY ENGINEERING DEPT.



PROPERTY OF
CITY OF RIVERSIDE
CITY ENGINEERING DEPT.

N^o 1088
RIVERSIDE ENGINEERING CO
RIVERSIDE, CALIFORNIA
FOR HEERS BROS.
Plan & Profile of Sewers - UNIT No. 6
DRAWN BY M. J. CHECKED BY SCALE 1/8" = 1'-0"
DATE 9-29-52 REVISED 10-14-52
Springfield CIVIL & STRUCTURAL ENGINEER #1126
SHEET 4 OF 7

Approved by M. J. Jurnin
City Engineer



PROPERTY OF
CITY OF RIVERSIDE
CITY ENGINEERING DEPT.

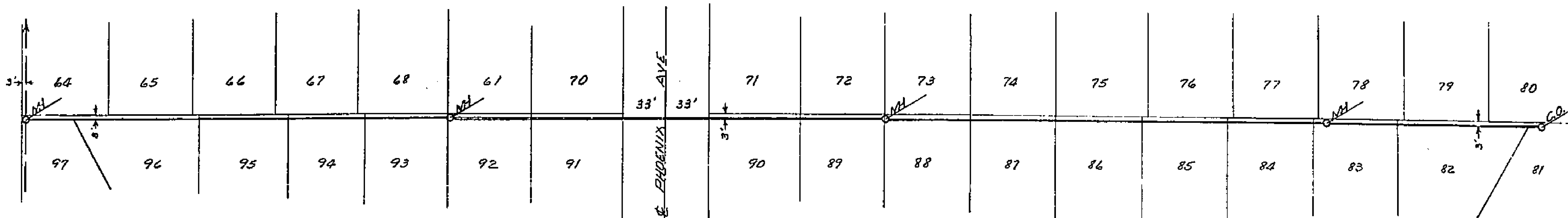
PROPERTY OF
CITY OF RIVERSIDE
CITY ENGINEERING DEPT.

PLATE 1 - PLAN - PROFILE - O. P. & R. E. STANDARD
KEUFFEL & ESSER CO., NEW YORK

K & E Co. No. 345-1

1088

PROPERTY OF
CITY OF RIVERSIDE
CITY ENGINEERING DEPT.

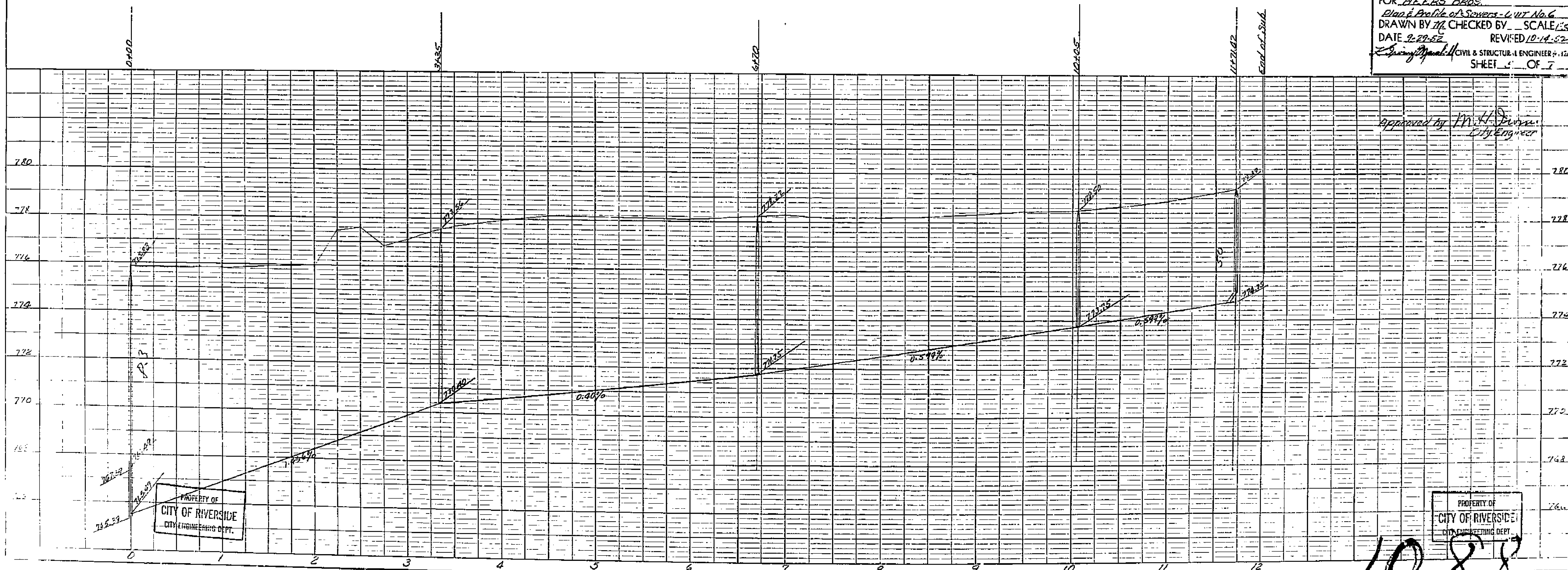


PROPERTY OF
CITY OF RIVERSIDE
CITY ENGINEERING DEPT.

± 2' from I.C.

No. 1088
RIVERSIDE ENGINEERING CO.
RIVERSIDE, CALIFORNIA
FOR HEERS BEES
Plan & Profile of Sewers - LWT No. 6
DRAWN BY *ME* CHECKED BY *ME* SCALE 1"=50'
DATE 2-29-52 REVISED 10-14-52
Springfield CIVIL & STRUCTURAL ENGINEER No. 124
SHEET 5 OF 7

Approved by *M.H. Durn*
City Engineer



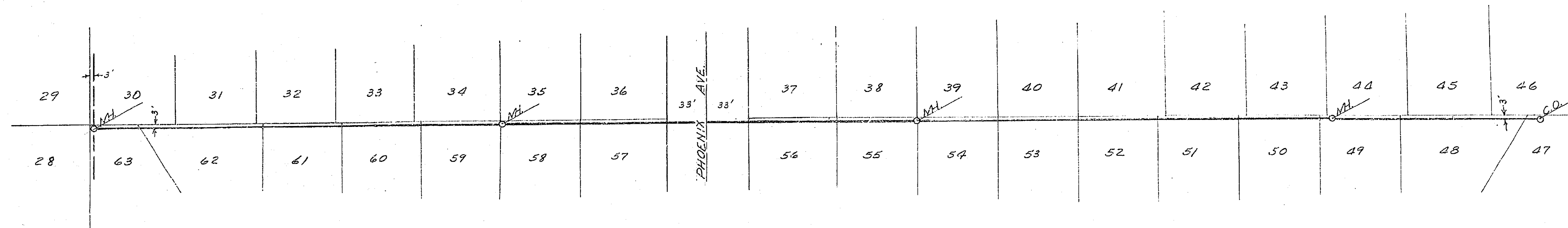
PROPERTY OF
CITY OF RIVERSIDE
CITY ENGINEERING DEPT.

PROPERTY OF
CITY OF RIVERSIDE
CITY ENGINEERING DEPT.

1088

PROPERTY OF
CITY OF RIVERSIDE
CITY ENGINEERING DEPT.

PROPERTY OF
CITY OF RIVERSIDE
CITY ENGINEERING DEPT.



14-1088
RIVERSIDE ENGINEERING CO.
RIVERSIDE, CALIFORNIA
FOR HEERS Bros.
Plan & Profile of Sewers - UNIT No. 6
DRAWN BY W.C. CHECKED BY W.C. SCALE 1"=20'
DATE 9-29-52 REVISED 10-14-54
LeRoy Marshall CIVIL & STRUCTURAL ENGINEER #1115
SHEET 6 OF 7

Approved by M.H. Jerns
City Engineer

PROPERTY OF
CITY OF RIVERSIDE
CITY ENGINEERING DEPT.

PROPERTY OF
CITY OF RIVERSIDE
CITY ENGINEERING DEPT.

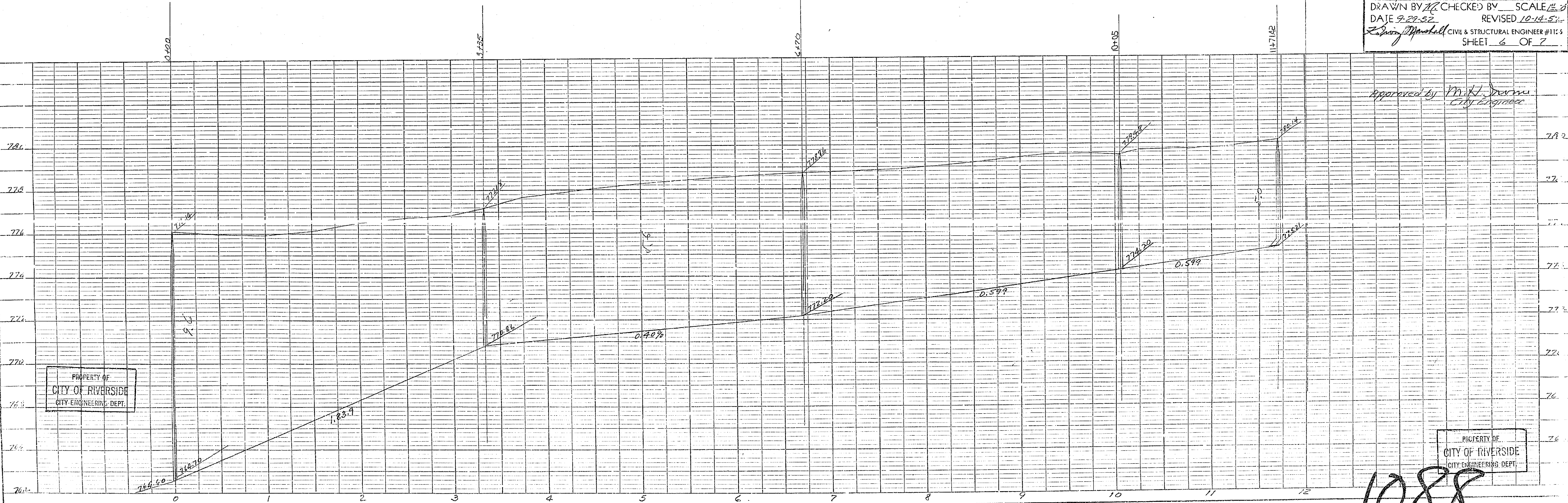


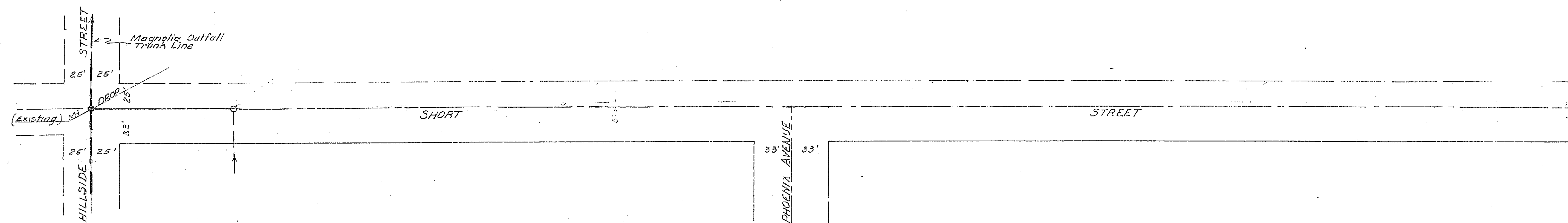
PLATE 1 - PLAN - PROFILE - O.P.R. & R.E. STANDARD
KUFFEL & ESSER CO., NEW YORK

K & E Co. No. 345-1 MADE IN U.S.A. 48848

1088

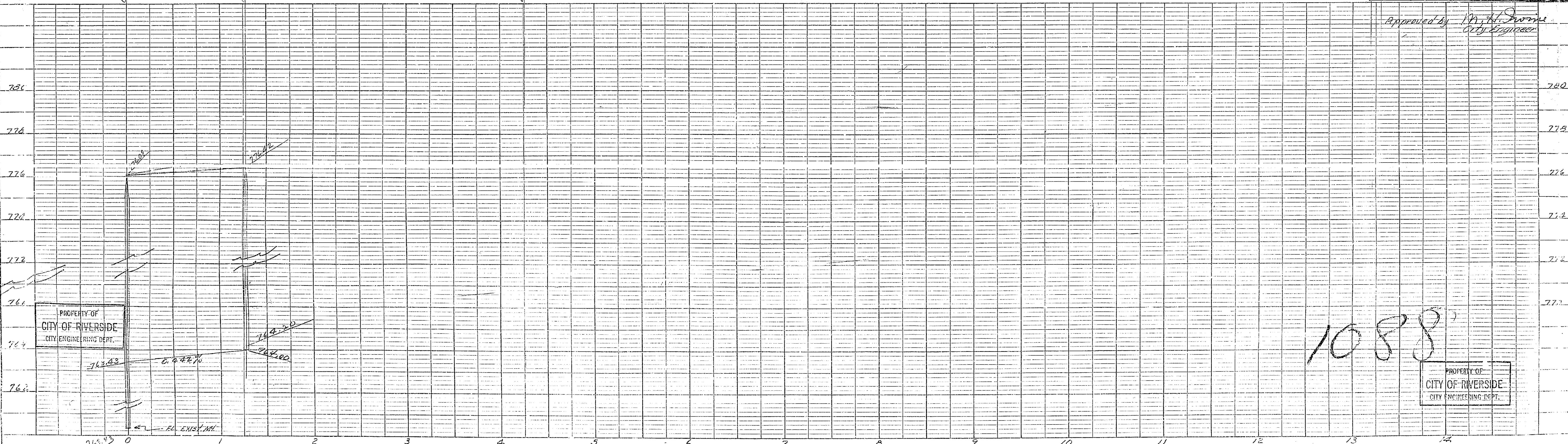
PROPERTY OF
CITY OF RIVERSIDE
CITY ENGINEERING DEPT.

PROPERTY OF
CITY OF RIVERSIDE
CITY ENGINEERING DEPT.



N^o 1088
RIVERSIDE ENGINEERING CO.
RIVERSIDE, CALIFORNIA
FOR HEERS BROS.
Plant Profile of Sewers - Unit No. 4
DRAWN BY *W.C.* CHECKED BY *W.C.* SCALE 1"=50'
DATE 9-29-52 REVISED 10-14-52
W.C. Smith CIVIL & STRUCTURAL ENGINEER #126
SHEET 7 OF 7

Approved by *M.H. Swine*
City Engineer



PROPERTY OF
CITY OF RIVERSIDE
CITY ENGINEERING DEPT.

PROPERTY OF
CITY OF RIVERSIDE
CITY ENGINEERING DEPT.