

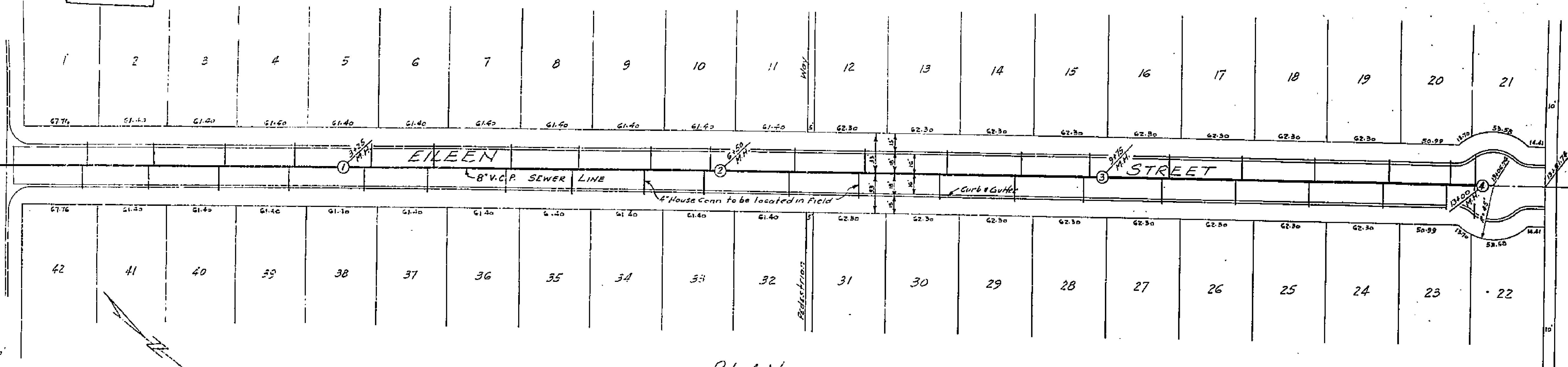
PROPERTY OF  
CITY OF RIVERSIDE  
CITY ENGINEERING DEPT.

1089-A  
SHEET 1 OF 2 SHEETS  
SEWER PLAN AND P.D.  
OF  
EILEEN STREET  
IN  
CALIFORNIA SQUARE

PROPERTY OF  
CITY OF RIVERSIDE  
CITY ENGINEERING DEPT.

BY  
ALBERT A. WEBB ASSOCIATES  
CIVIL ENGINEERS  
NOVEMBER 1952

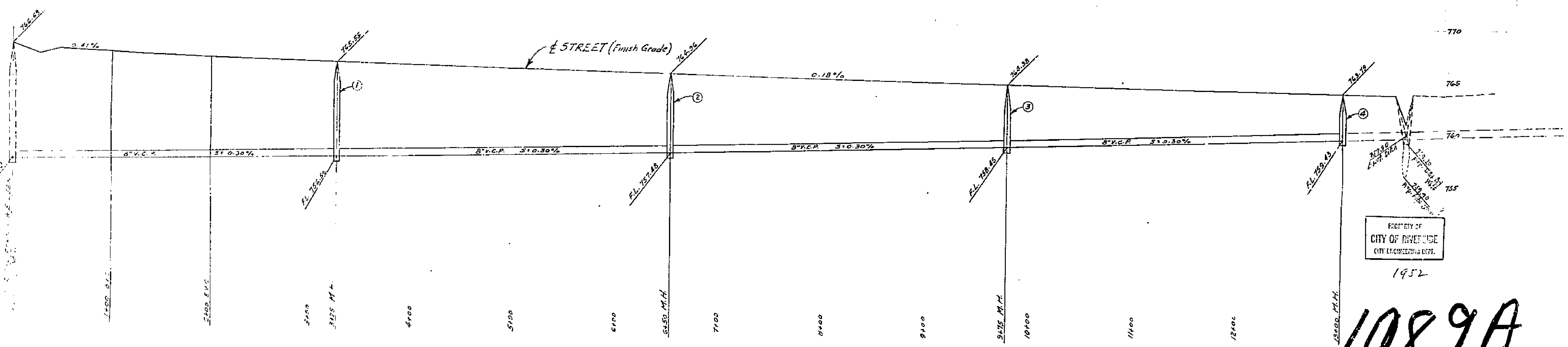
APPROVED *M. H. Swine*  
CITY ENGINEER



PLAN  
SCALE: 1" = 40'

PROFILE  
SCALE:  
HORIZ: 1" = 40'  
VERT: 1" = 4'

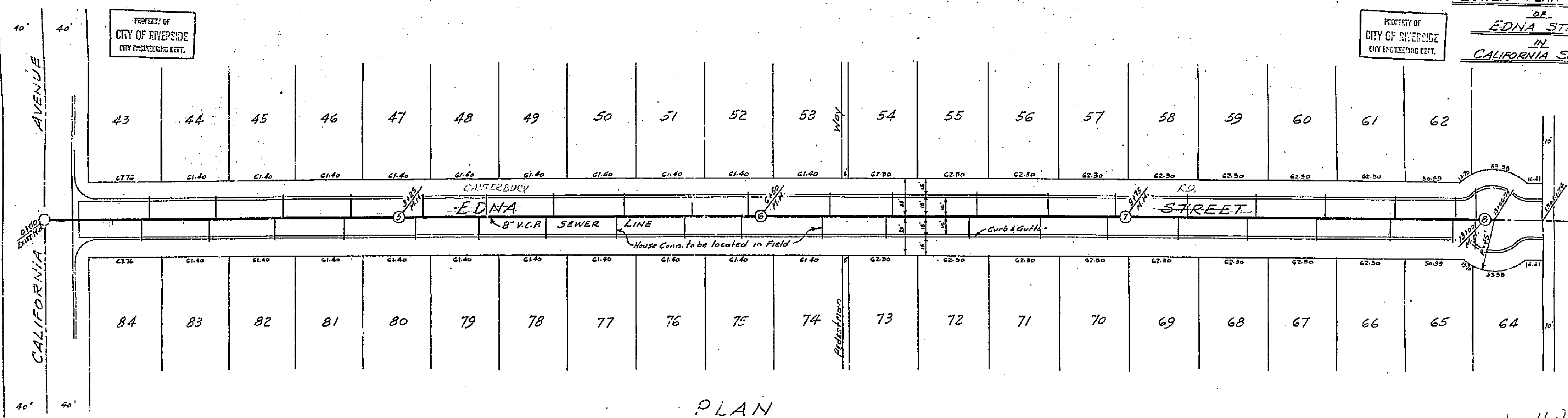
QUANTITY ESTIMATE  
8" V.C.P. 1300'  
Std. M.H. 4  
Y Branches 42  
4" House Conn. 760'



PROPERTY OF  
CITY OF RIVERSIDE  
CITY ENGINEERING DEPT.

1952

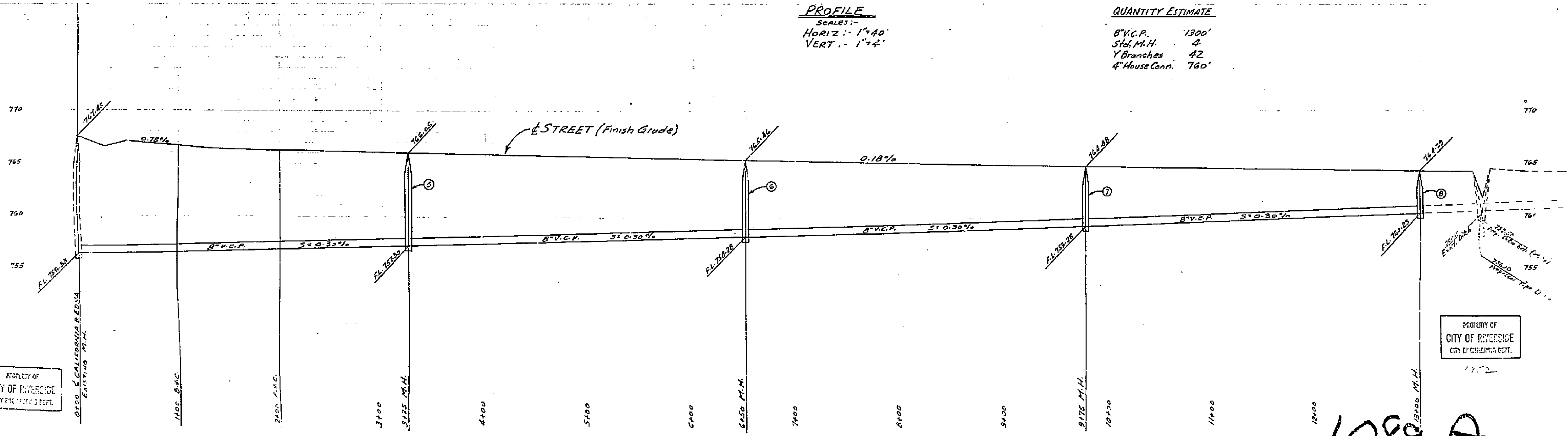
1089A



APPROVED *M. H. Lewis*  
 CITY ENGINEER

**PROFILE**  
 SCALES:-  
 HORIZ. 1"=40'  
 VERT. 1"=4'

**QUANTITY ESTIMATE**  
 8" V.C.P. 1300'  
 Std. M.H. 4  
 Y Branches 42  
 4" House Conn. 760'



PROPERTY OF  
 CITY OF RIVERSIDE  
 CITY ENGINEERING DEPT.

PROPERTY OF  
 CITY OF RIVERSIDE  
 CITY ENGINEERING DEPT.

1089 A