

PROPERTY OF  
CITY OF RIVERSIDE  
CITY ENGINEERING DEPT.

115 1090  
SHEET 1 OF 3 SHEETS  
RUBIDOUX GARDENS  
STREET GRADES  
TOWER ROAD  
SCALE 1"=40'  
ALBERT A. WEBS ASSOCIATES  
CIVIL ENGINEERS JUN 1952

PROPERTY OF  
CITY OF RIVERSIDE  
CITY ENGINEERING DEPT.

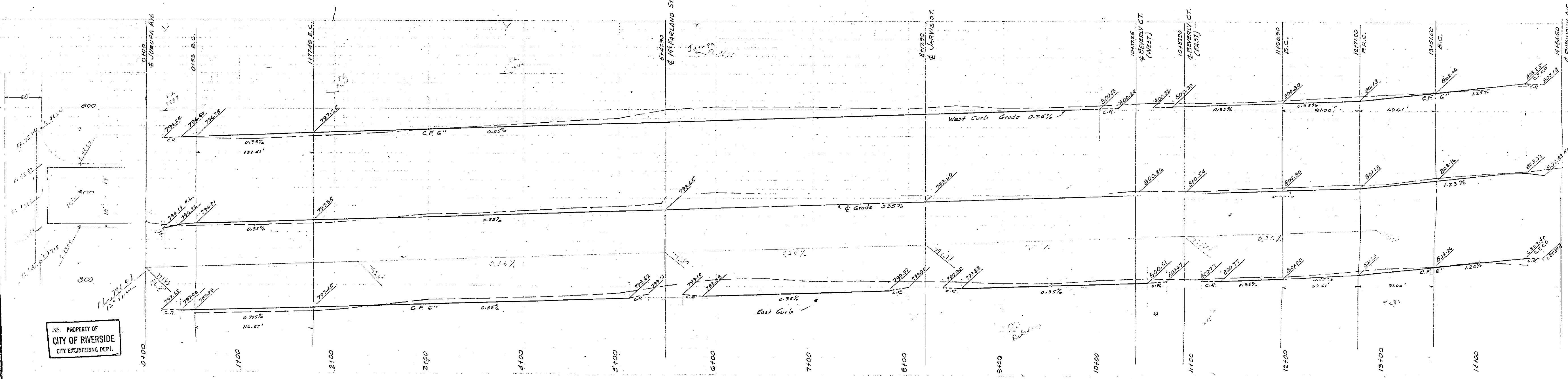
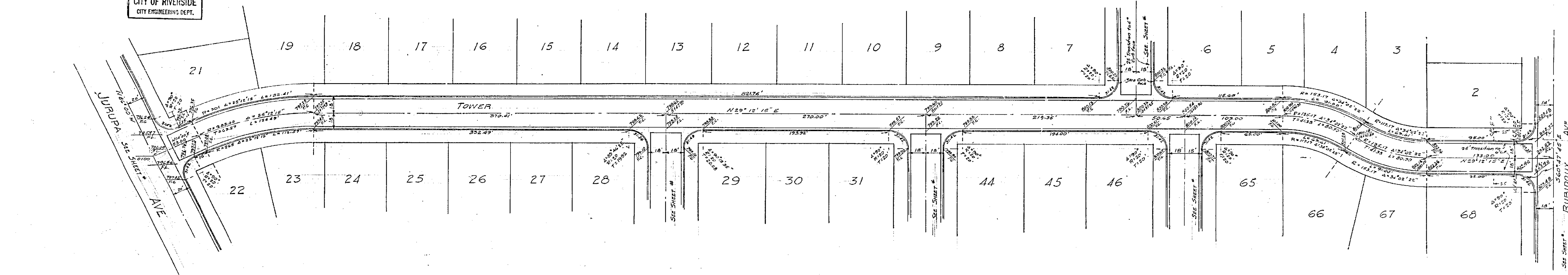
Note: This curb face of  
R-2 Tower C-1 curb face

B.M. Palm Ave & Jurupa  
Spoke & Level - S. curb,  
E. of E. line of Palm, El. 914

Approved *M.H. Durine*  
CITY ENGINEER

PROPERTY OF  
CITY OF RIVERSIDE  
CITY ENGINEERING DEPT.

1090

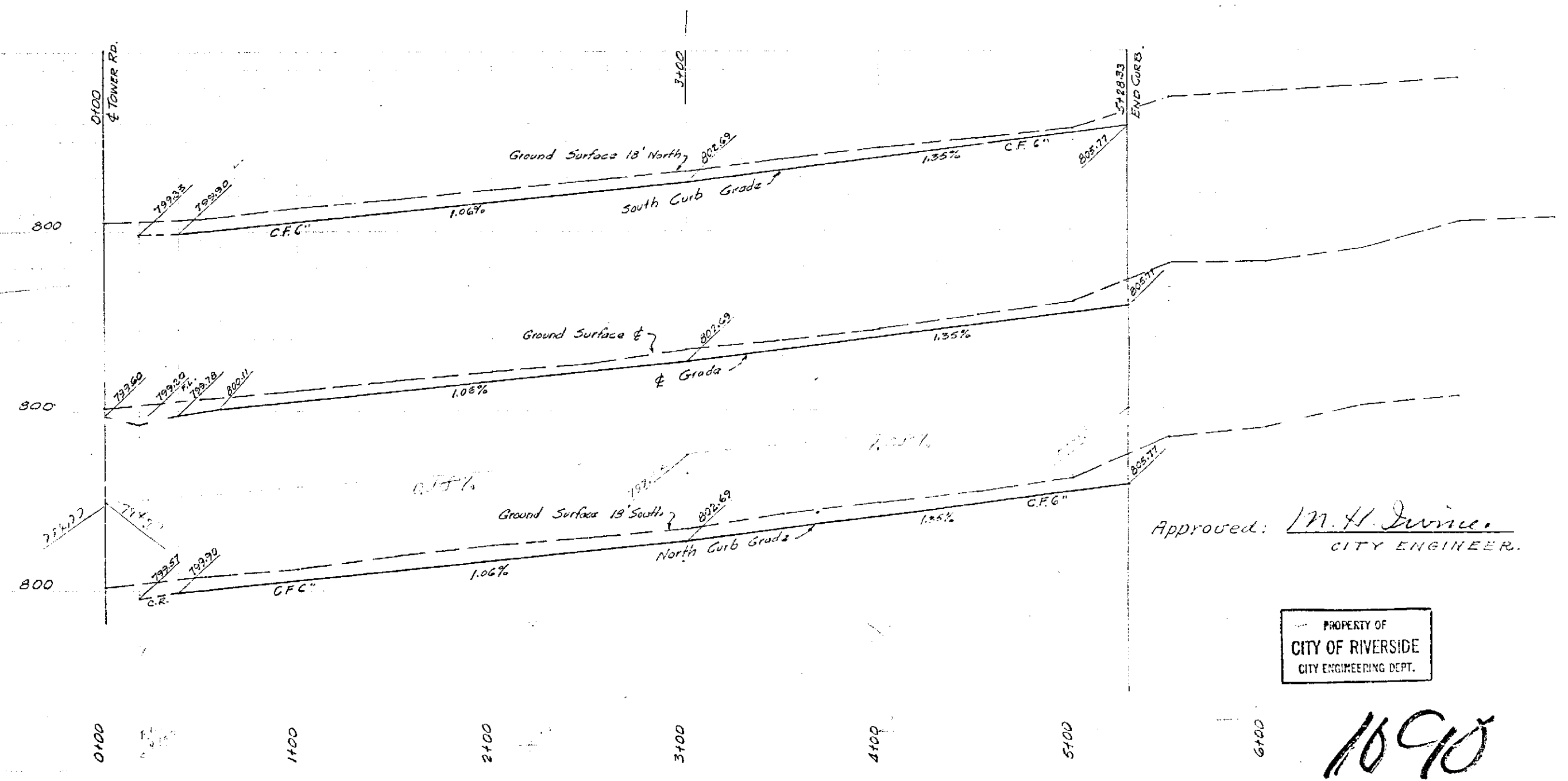
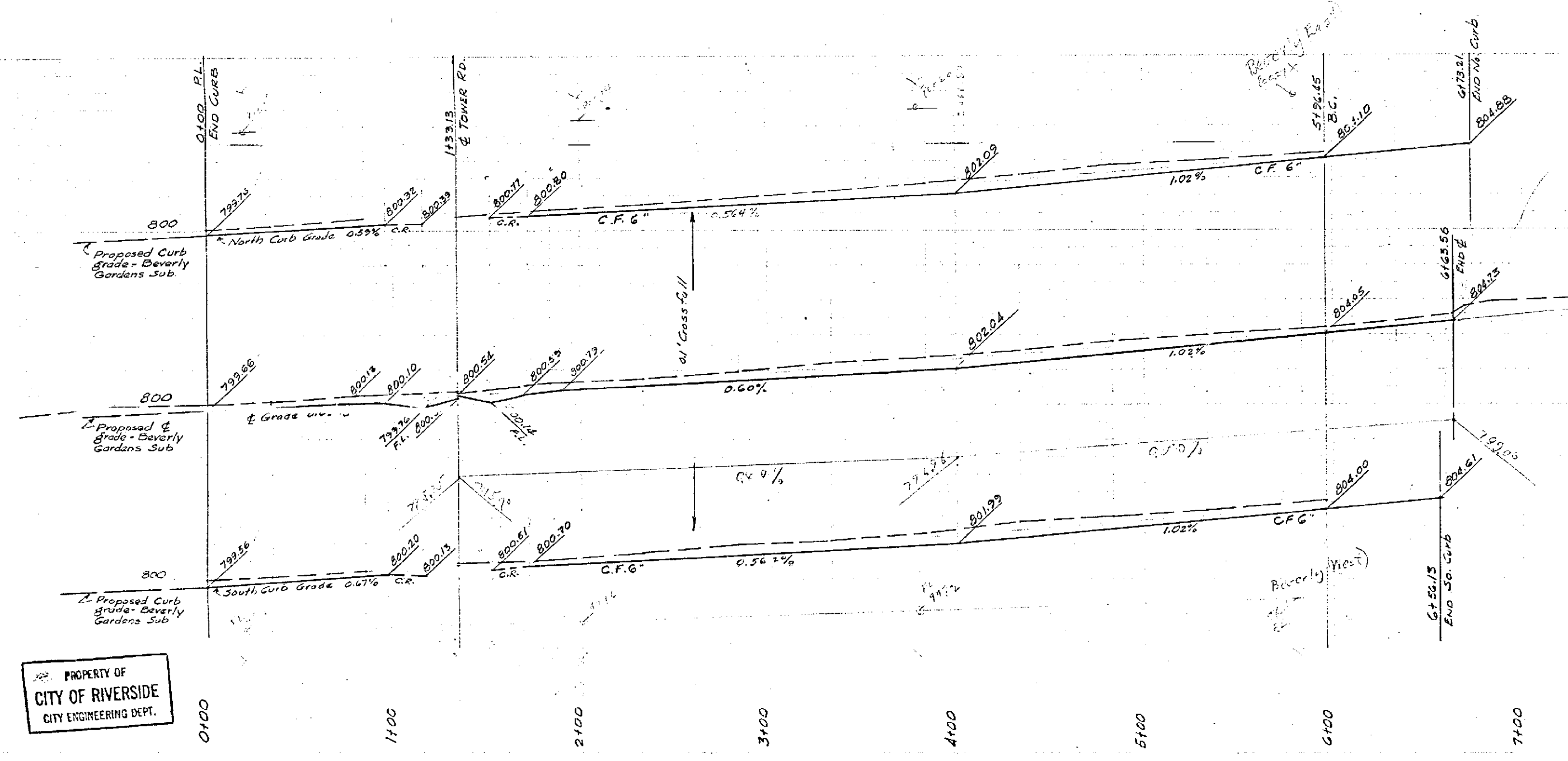
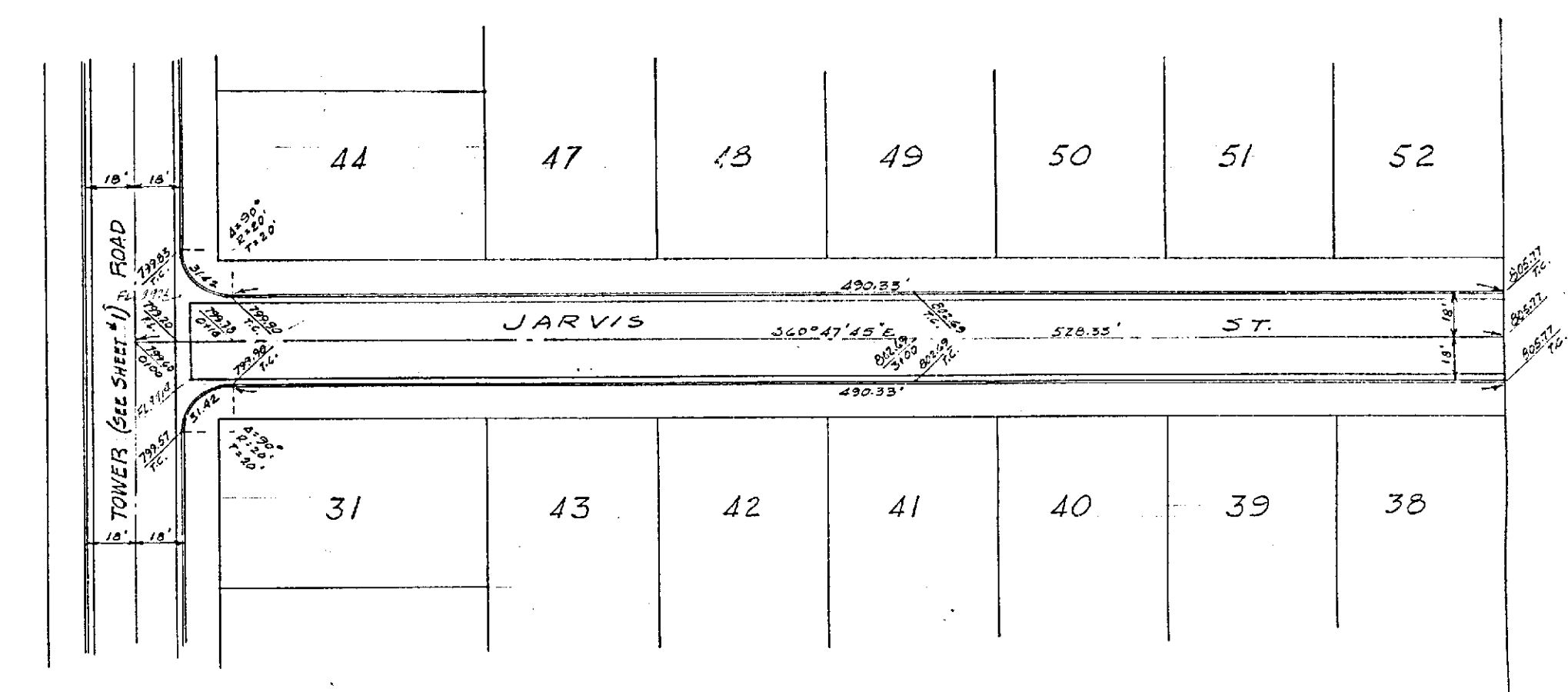
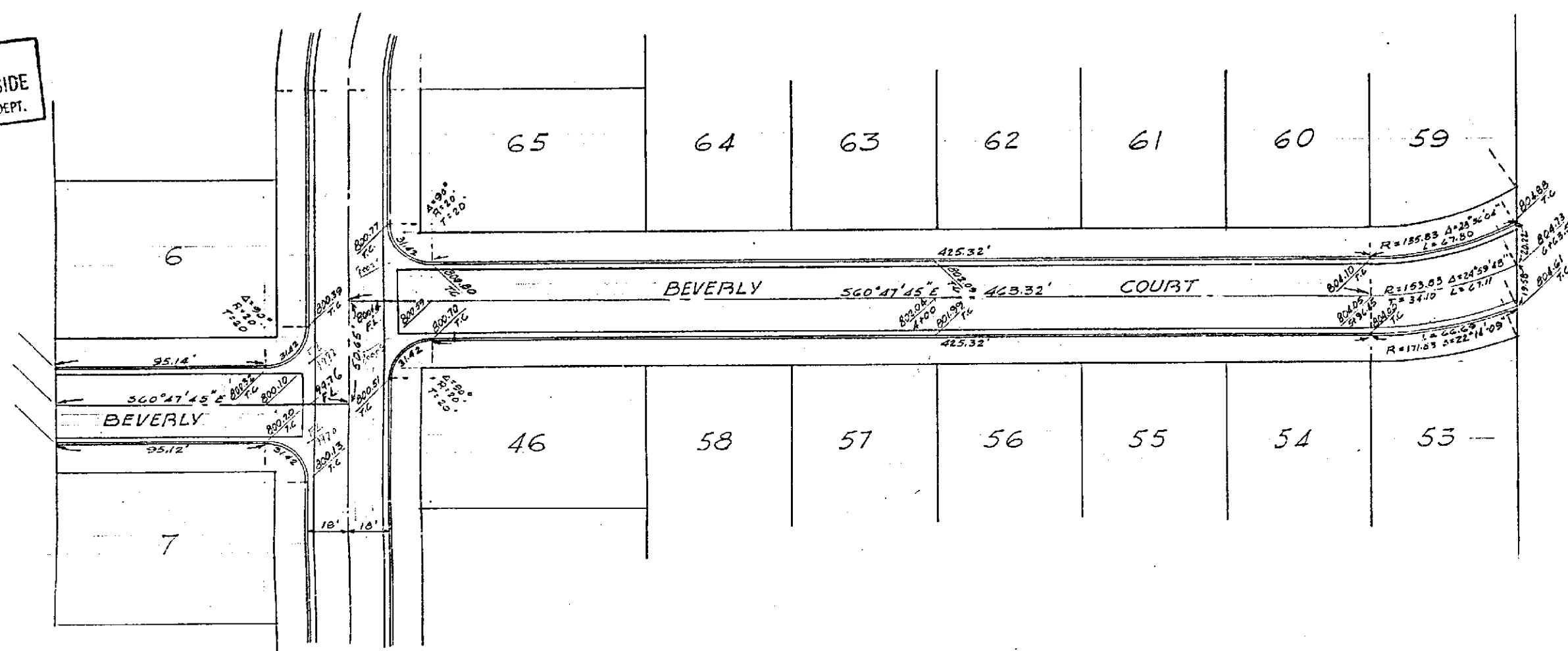


11-1090  
 SHEET 2 OF 3 SHEETS  
 RUBIDOUX GARDENS  
 STREET GRADES

SCALE 1"=10'  
 ALBERT WEBB ASSOCIATES  
 CIVIL ENGINEERS JUNE 1922

PROPERTY OF  
 CITY OF RIVERSIDE  
 CITY ENGINEERING DEPT.

PROPERTY OF  
 CITY OF RIVERSIDE  
 CITY ENGINEERING DEPT.



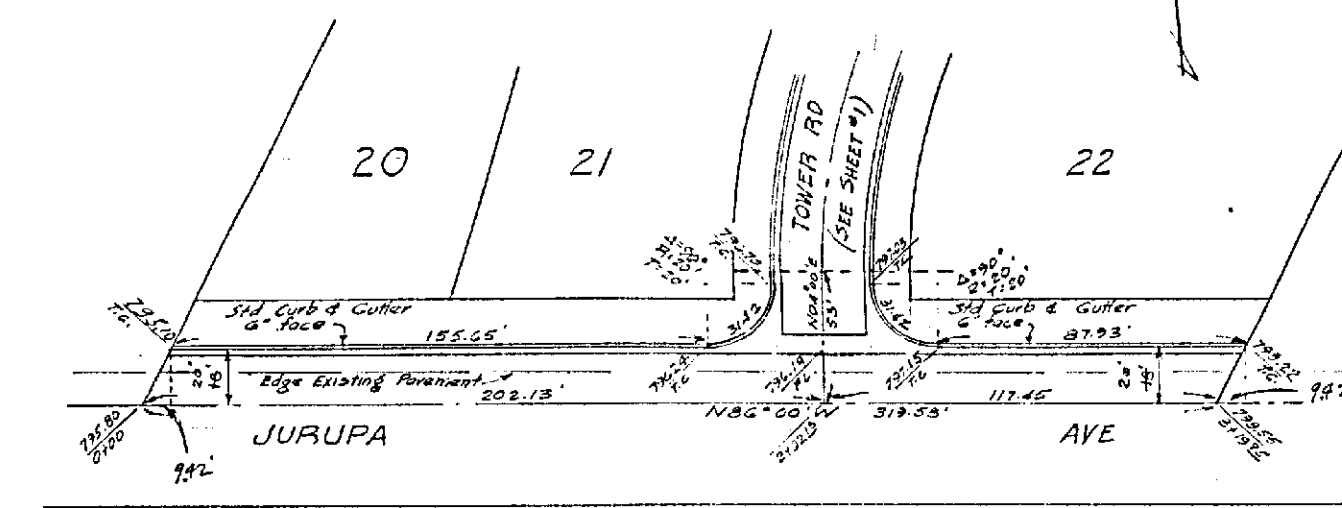
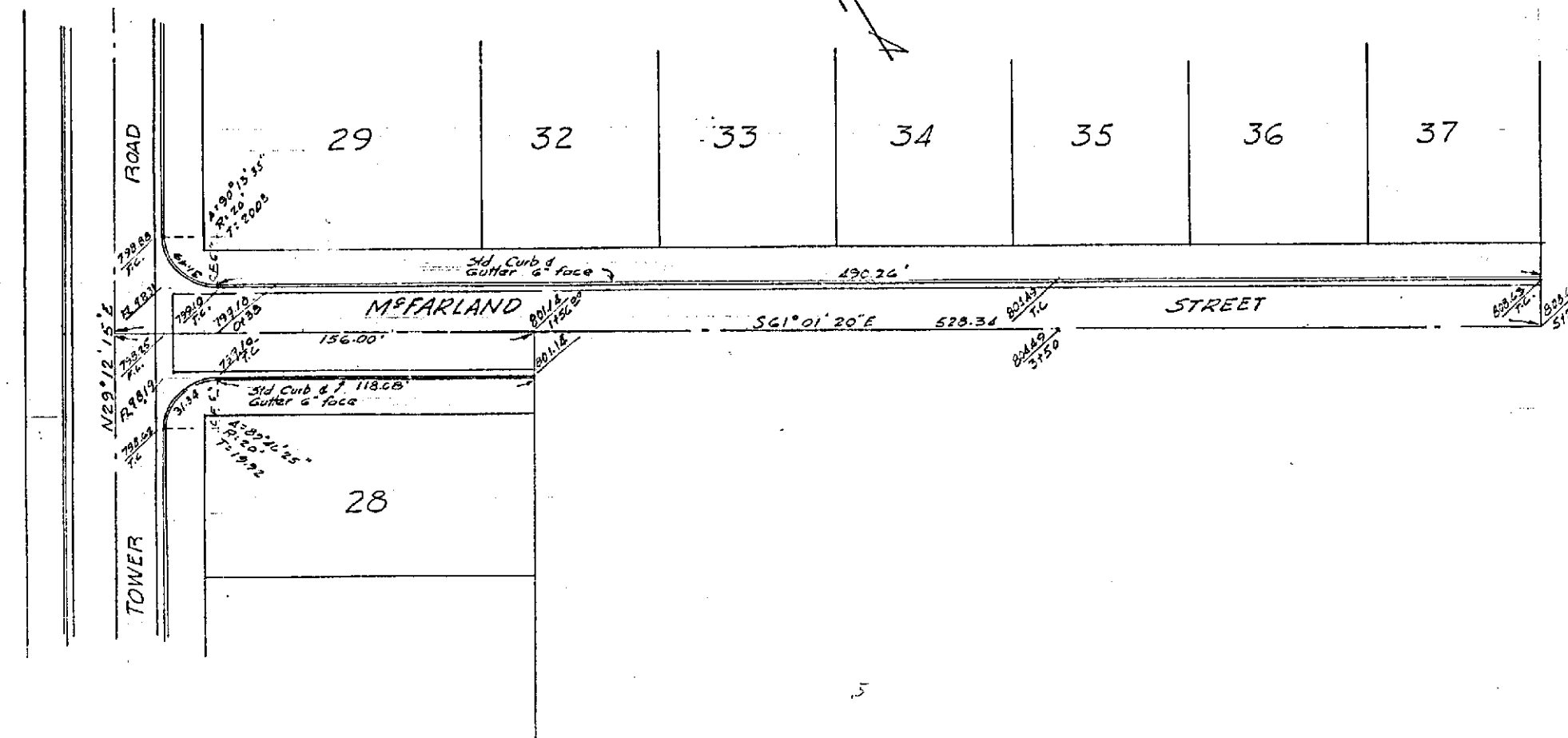
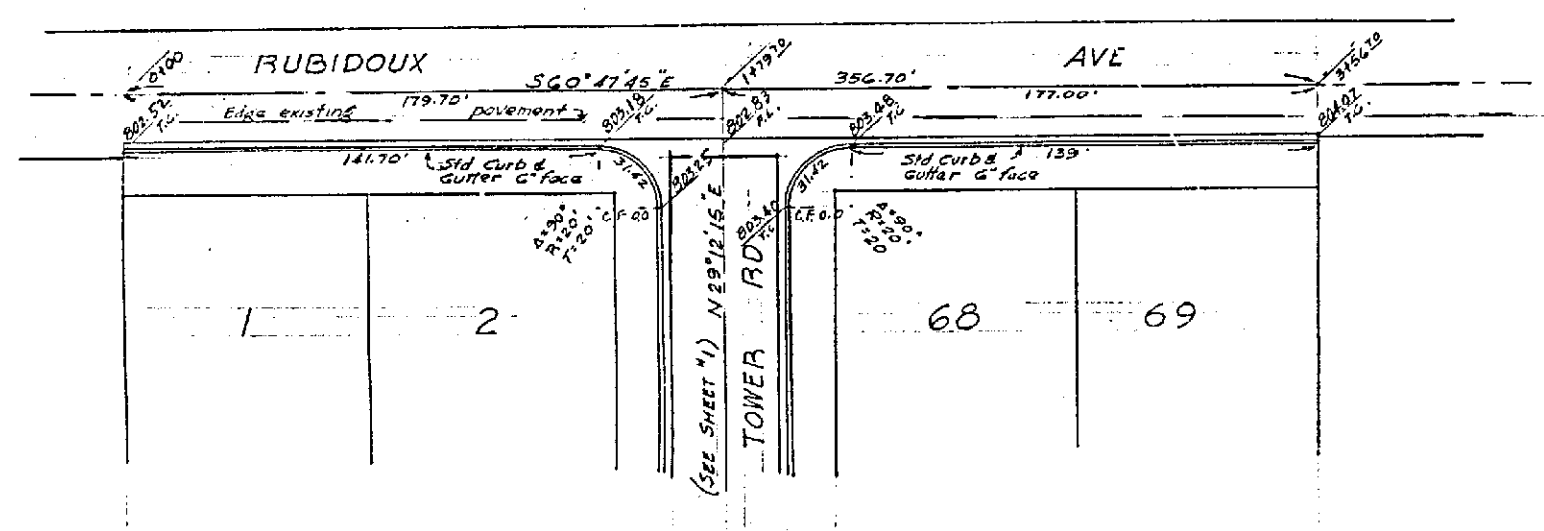
Approved: *M. H. Irvine*  
 CITY ENGINEER.

PROPERTY OF  
 CITY OF RIVERSIDE  
 CITY ENGINEERING DEPT.

10910

PROPERTY OF  
 CITY OF RIVERSIDE  
 CITY ENGINEERING DEPT.

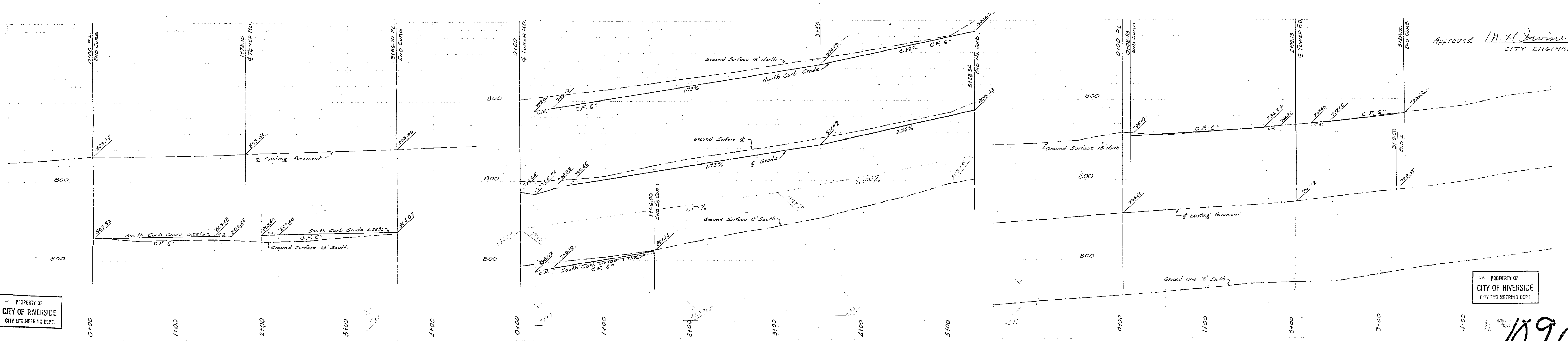
PROPERTY OF  
CITY OF RIVERSIDE  
CITY ENGINEERING DEPT.



112 1090  
SHEET 3 OF 3 SHEETS  
RUBIDOUX GARDENS  
STREET GRADES

SCALE 1"=40'  
ALBERT A. WEBB ASSOCIATES  
CIVIL ENGINEERS JUNE 1962

PROPERTY OF  
CITY OF RIVERSIDE  
CITY ENGINEERING DEPT.



Approved *M.H. Davis*  
CITY ENGINEER

PROPERTY OF  
CITY OF RIVERSIDE  
CITY ENGINEERING DEPT.

PROPERTY OF  
CITY OF RIVERSIDE  
CITY ENGINEERING DEPT.

1090