

PROPERTY OF
CITY OF RIVERSIDE
CITY ENGINEERING DEPT.

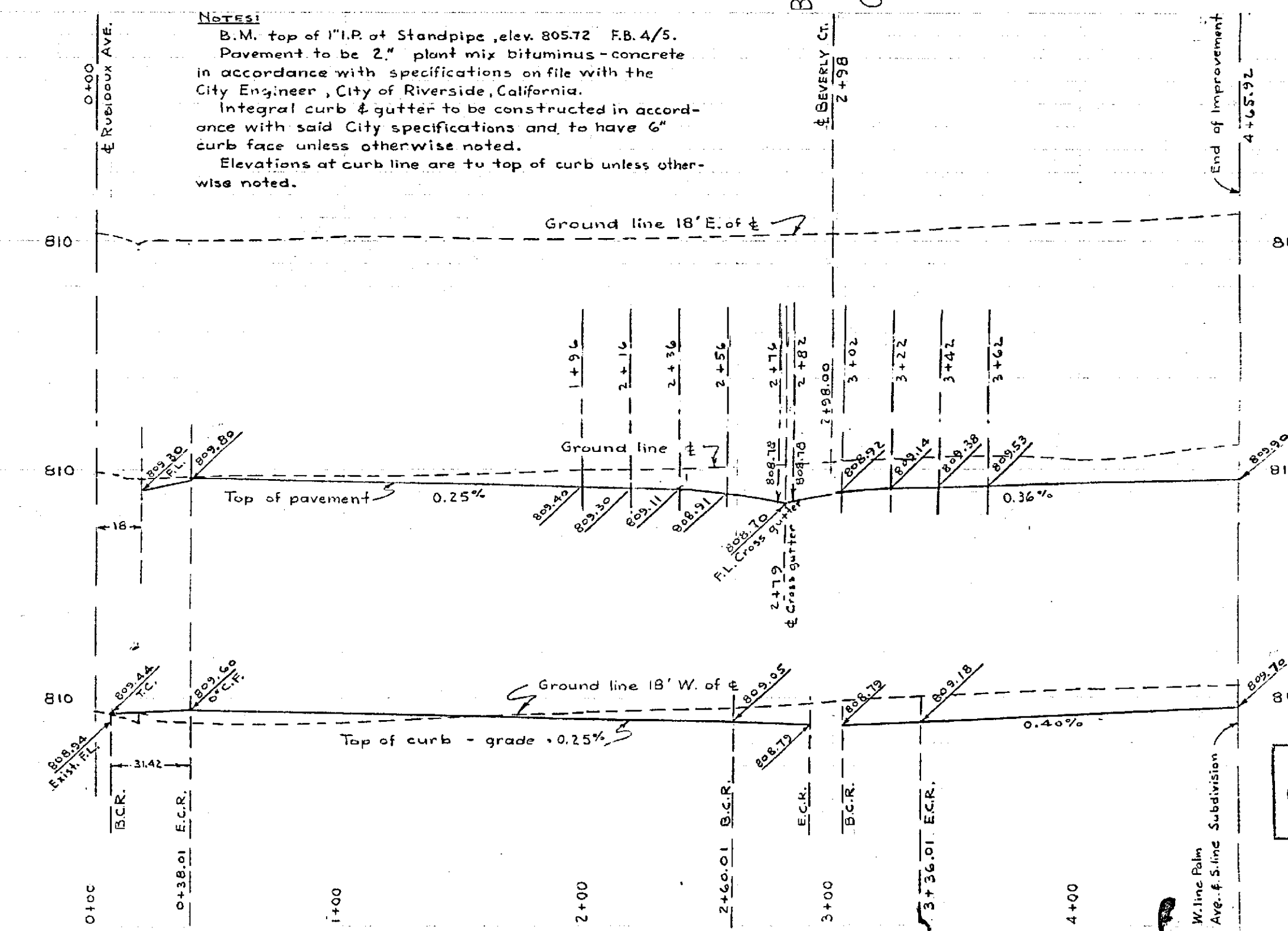
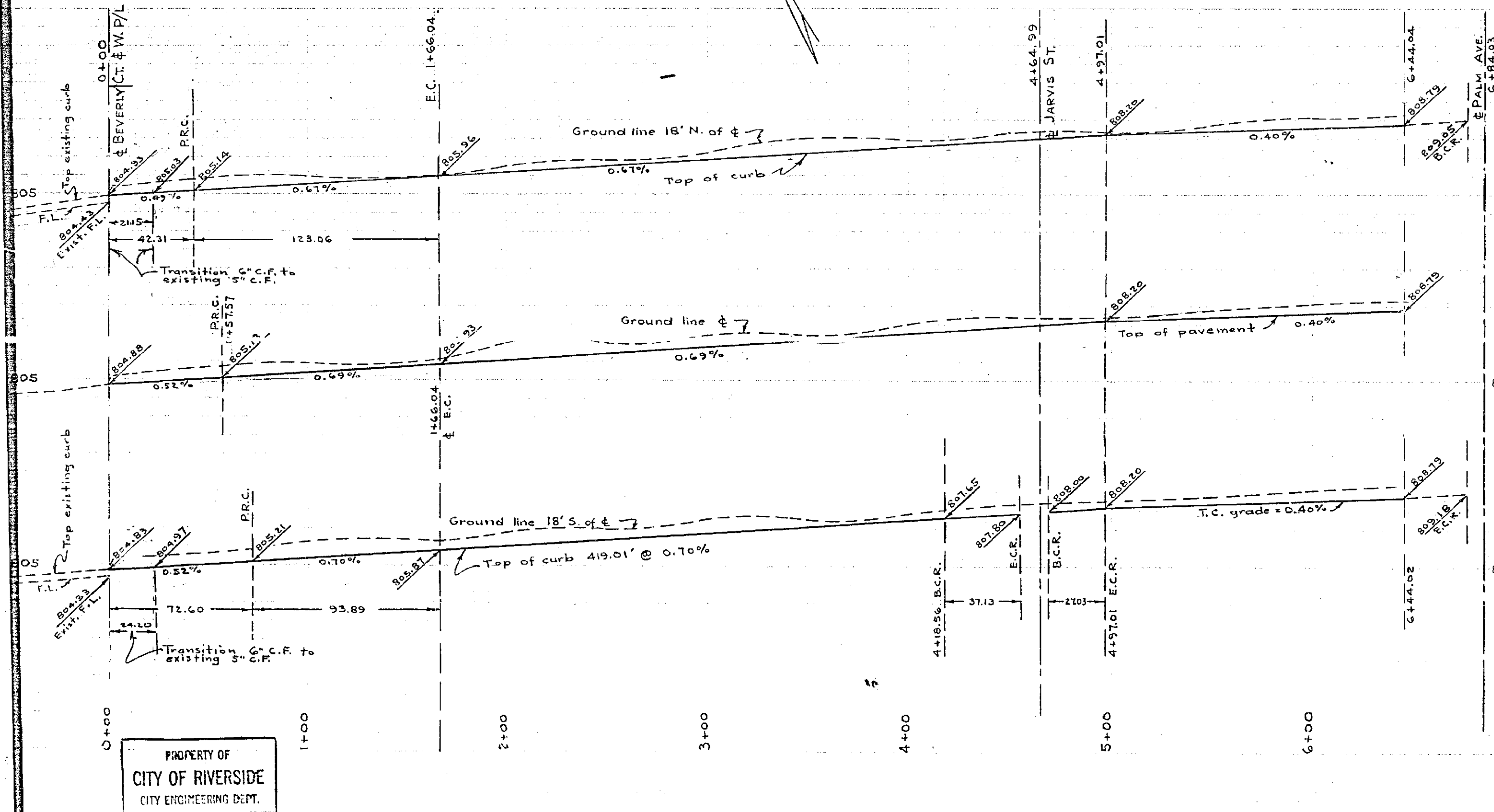
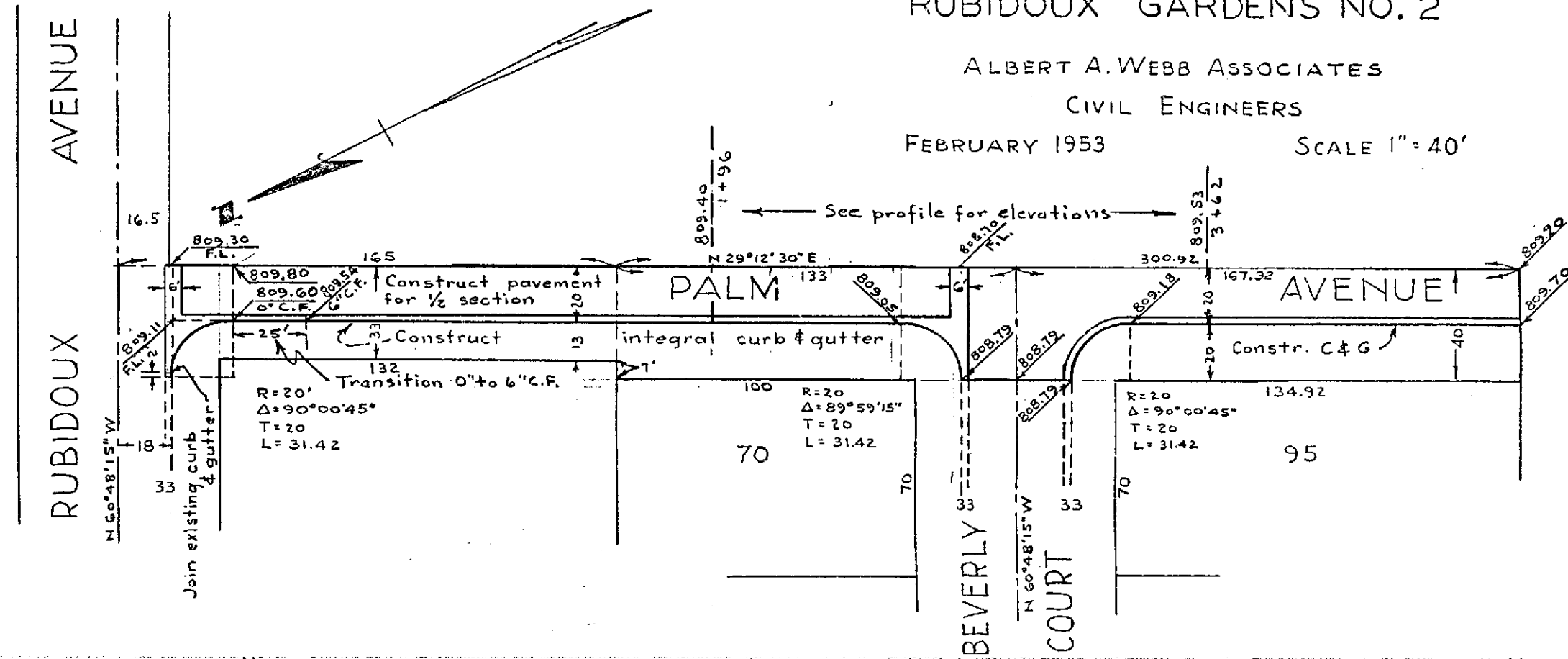
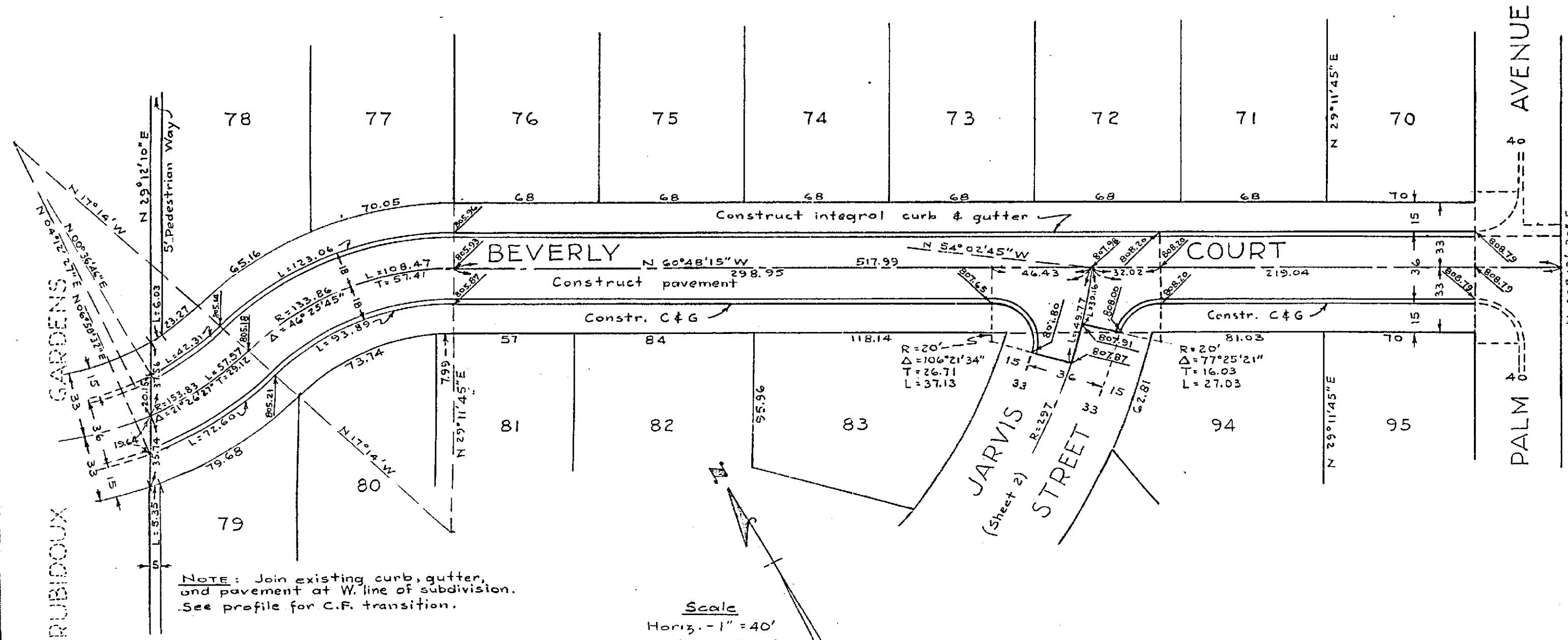
PROPERTY OF
CITY OF RIVERSIDE
CITY ENGINEERING DEPT.

No 1091
STREET PLAN AND PROFILE
OF
BEVERLY COURT
AND
PALM AVENUE
IN
RUBIDOUX GARDENS NO. 2

ALBERT A. WEBB ASSOCIATES
CIVIL ENGINEERS
FEBRUARY 1953 SCALE 1" = 40'

Approved this 15 day of April 1953.

M. H. Davis
City Engineer, City of Riverside



PROPERTY OF
CITY OF RIVERSIDE
CITY ENGINEERING DEPT.

1091

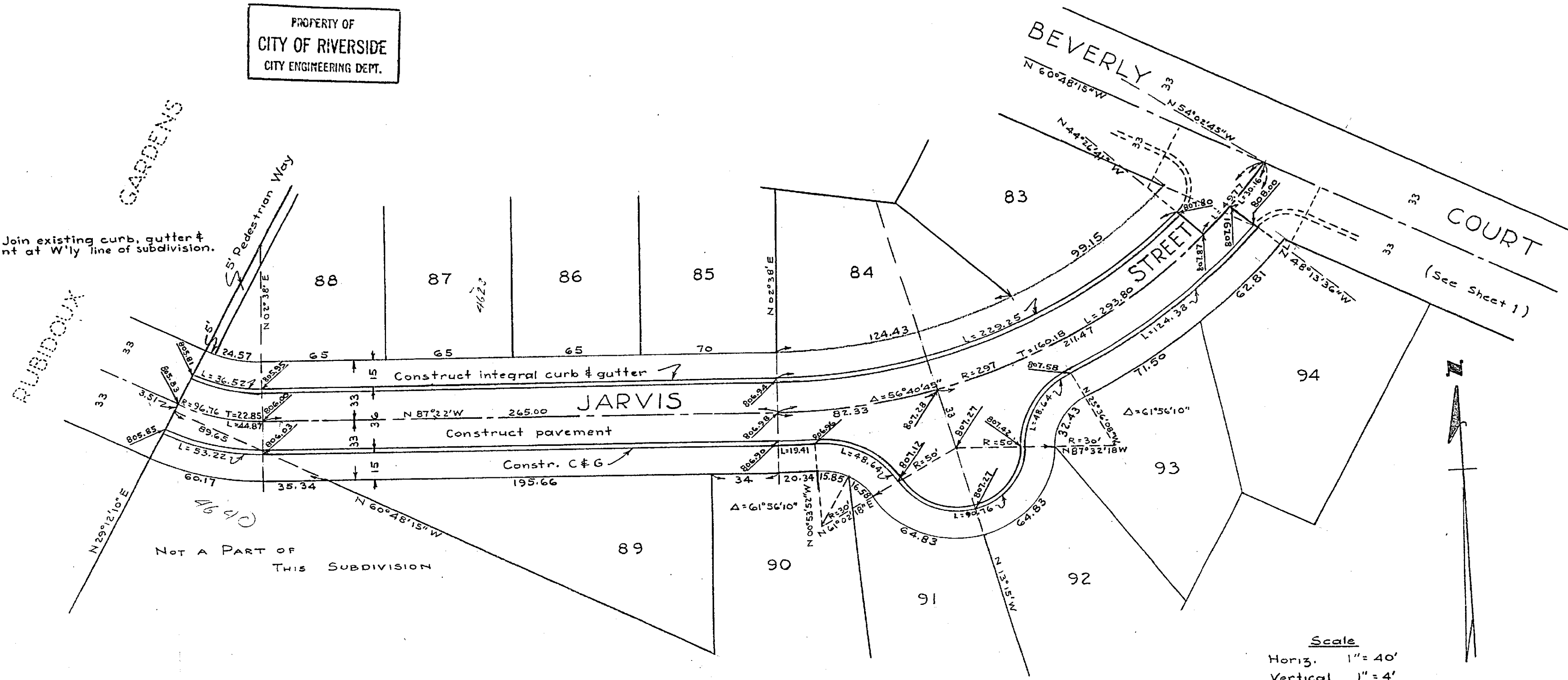
PROPERTY OF
CITY OF RIVERSIDE
CITY ENGINEERING DEPT.

PROPERTY OF
CITY OF RIVERSIDE
CITY ENGINEERING DEPT.

No 1091
STREET PLAN AND PROFILE
OF
JARVIS STREET
IN
RUBIDOUX GARDENS NO. 2

ALBERT A. WEBB ASSOCIATES
CIVIL ENGINEERS
FEBRUARY 1953 SCALE 1" = 40'

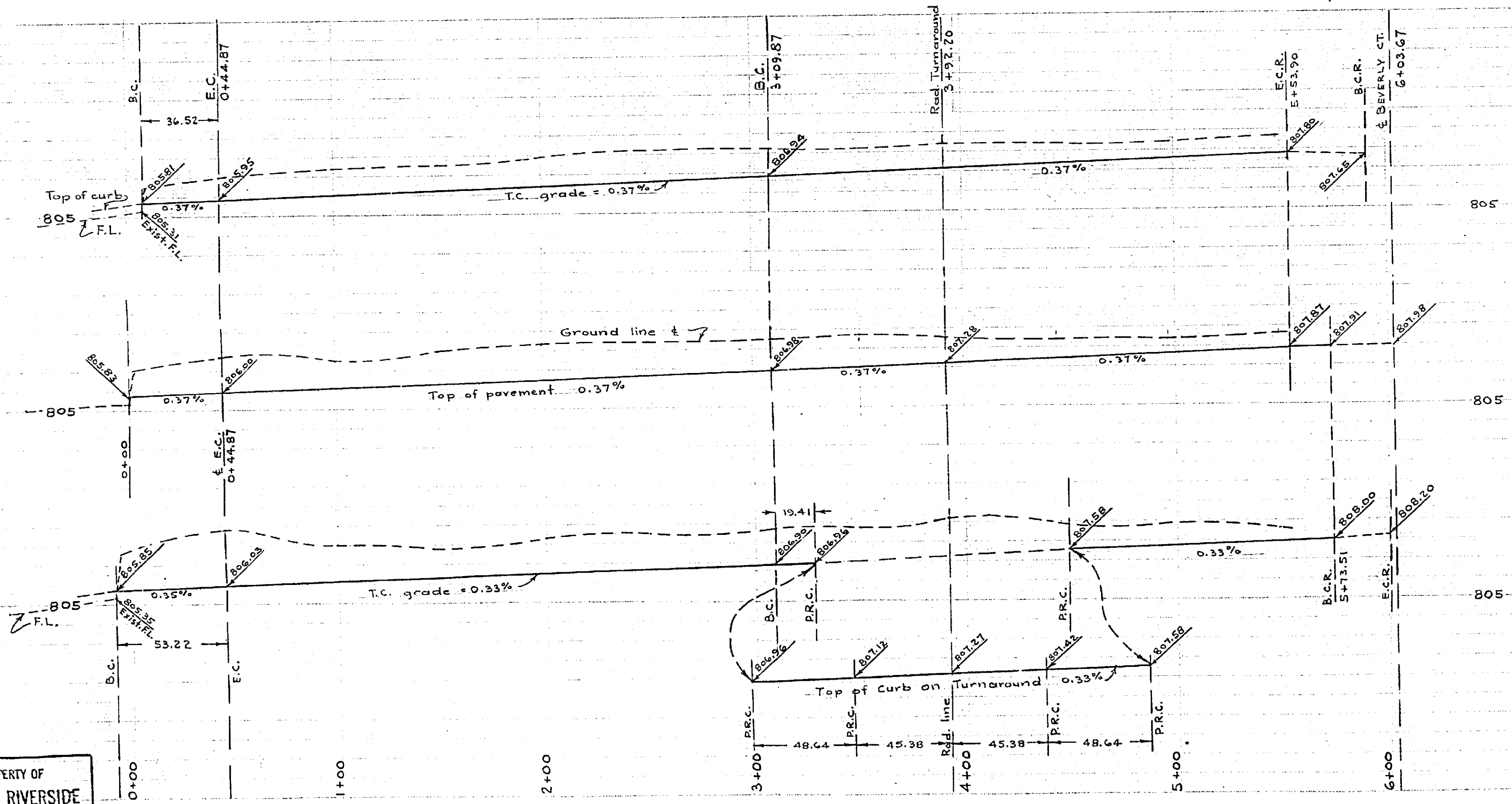
NOTE: Join existing curb, gutter & pavement at W'ly line of subdivision.



Scale
Horiz. 1" = 40'
Vertical 1" = 4'

Approved this 15 day of April 1953.

M. H. Swain
City Engineer, City of Riverside



PROPERTY OF
CITY OF RIVERSIDE
CITY ENGINEERING DEPT.

PROPERTY OF
CITY OF RIVERSIDE
CITY ENGINEERING DEPT.

1091