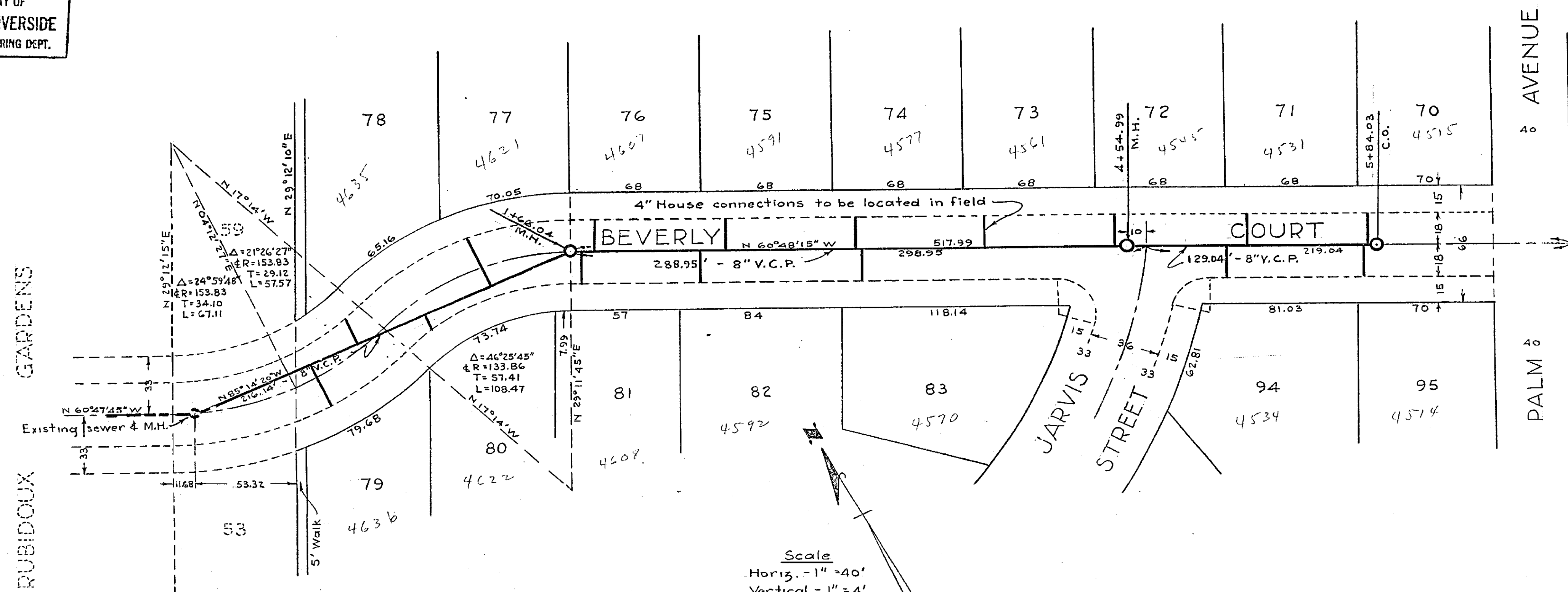


PROPERTY OF
CITY OF RIVERSIDE
CITY ENGINEERING DEPT.

PROPERTY OF
CITY OF RIVERSIDE
CITY ENGINEERING DEPT.

N^o 1091-A
SEWER PLAN AND PROFILE
OF
BEVERLY COURT
IN
RUBIDOUX GARDENS NO. 2

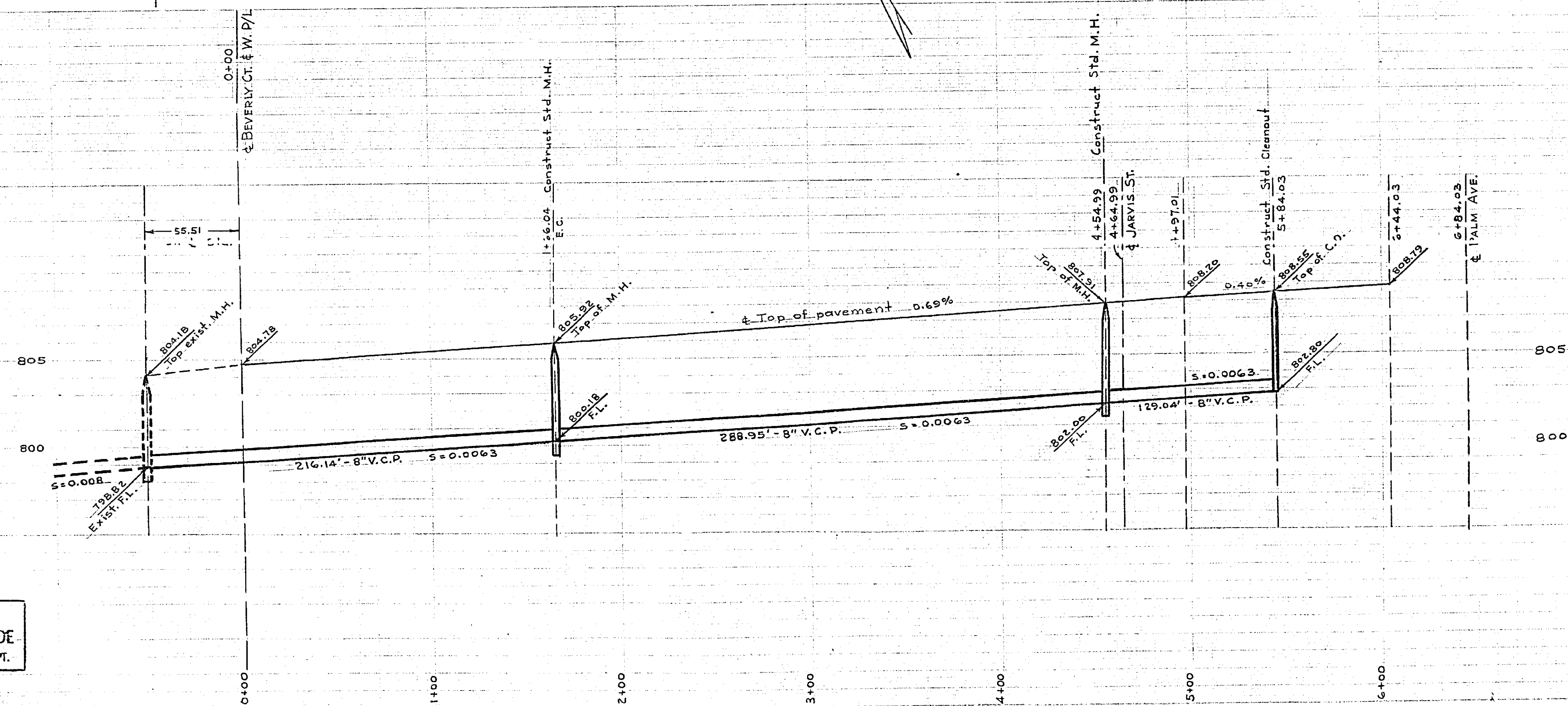
ALBERT A. WEBB ASSOCIATES
CIVIL ENGINEERS
FEBRUARY 1953 SCALE 1" = 40'



Scale
Horiz. - 1" = 40'
Vertical - 1" = 4'

Approved this 15 day of April 1953.

M. H. Devine
City Engineer, City of Riverside



Estimate of Materials

	BEVERLY CT.	JARVIS ST.	TOTAL
Std. Manholes	2	2	4
Std. Cleanouts	1	0	1
8" V.C.P.	634'	460'	1094'
S.H. "Y"s	.16	13	29
4" House Connections	296'	228'	524'

PROPERTY OF
CITY OF RIVERSIDE
CITY ENGINEERING DEPT.

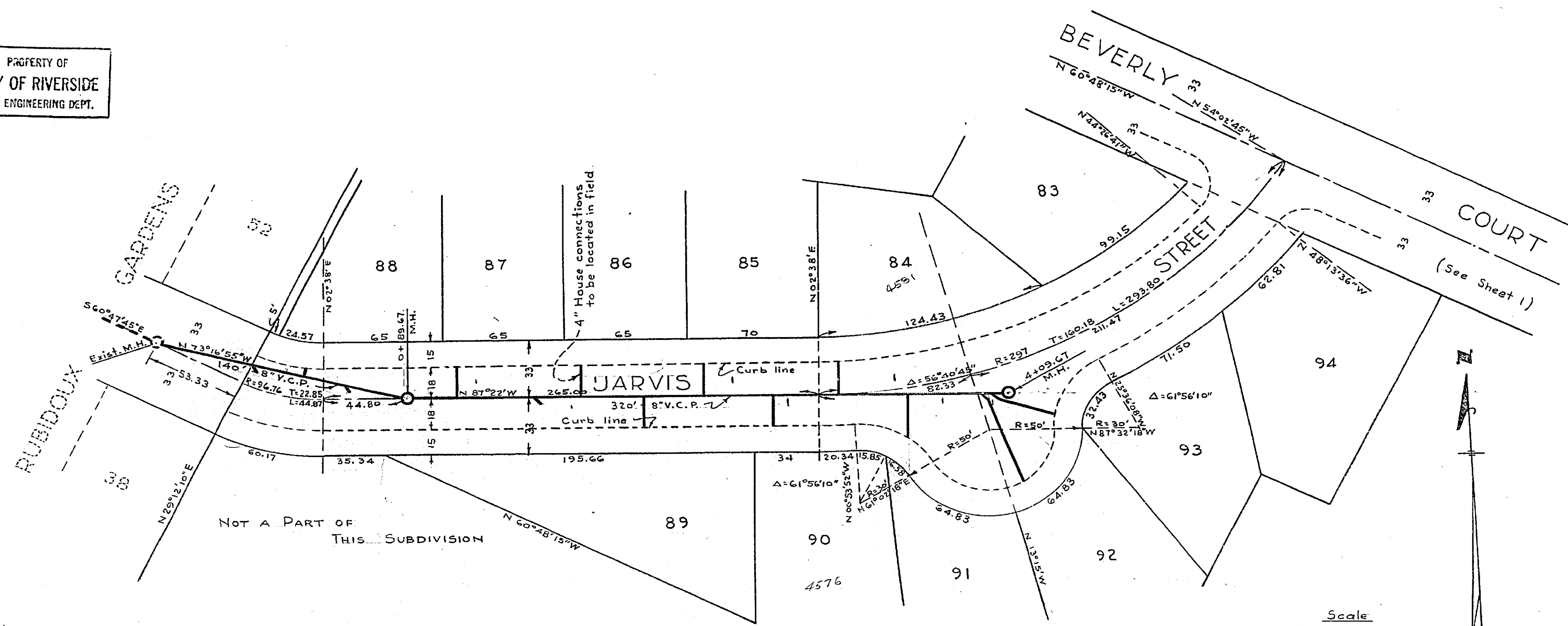
PROPERTY OF
CITY OF RIVERSIDE
CITY ENGINEERING DEPT.

1091A

PROPERTY OF
CITY OF RIVERSIDE
CITY ENGINEERING DEPT.

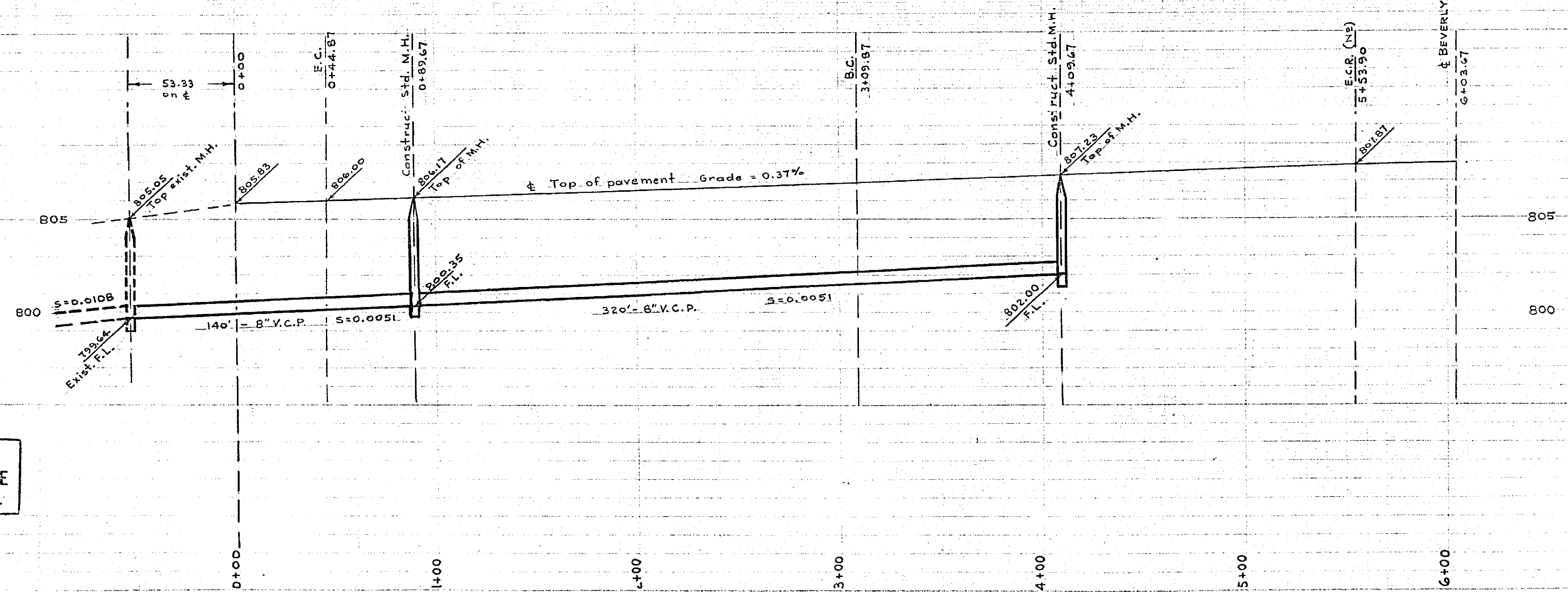
PROPERTY OF
CITY OF RIVERSIDE
CITY ENGINEERING DEPT.

No 1091-A
SEWER PLAN AND PROFILE
OF
JARVIS STREET
IN
RUBIDOUX GARDENS NO. 2
ALBERT A. WEBB ASSOCIATES
CIVIL ENGINEERS
FEBRUARY 1953 SCALE 1"=40'



Scale
Horiz. 1"=40'
Vertical 1"=4'

Approved this 15 day of April 1953.
M. H. Irvine
City Engineer, City of Riverside



PROPERTY OF
CITY OF RIVERSIDE
CITY ENGINEERING DEPT.

PROPERTY OF
CITY OF RIVERSIDE
CITY ENGINEERING DEPT.

1091A