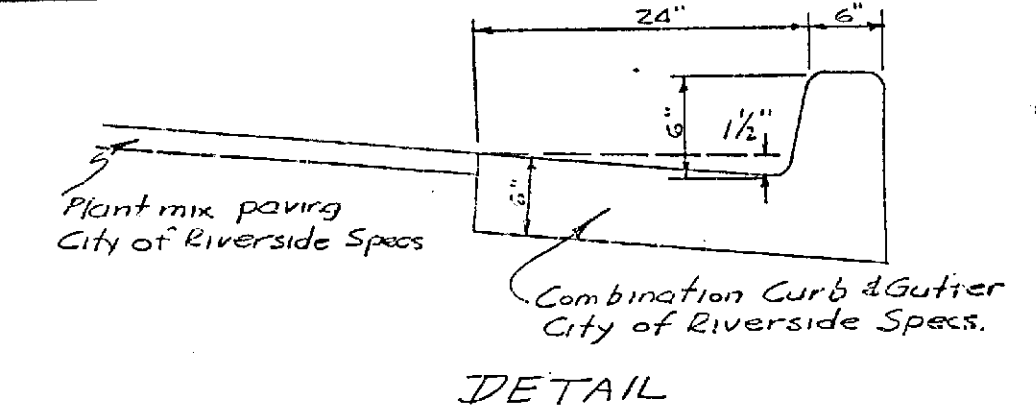


PROPERTY OF
CITY OF RIVERSIDE
CITY ENGINEERING DEPT.

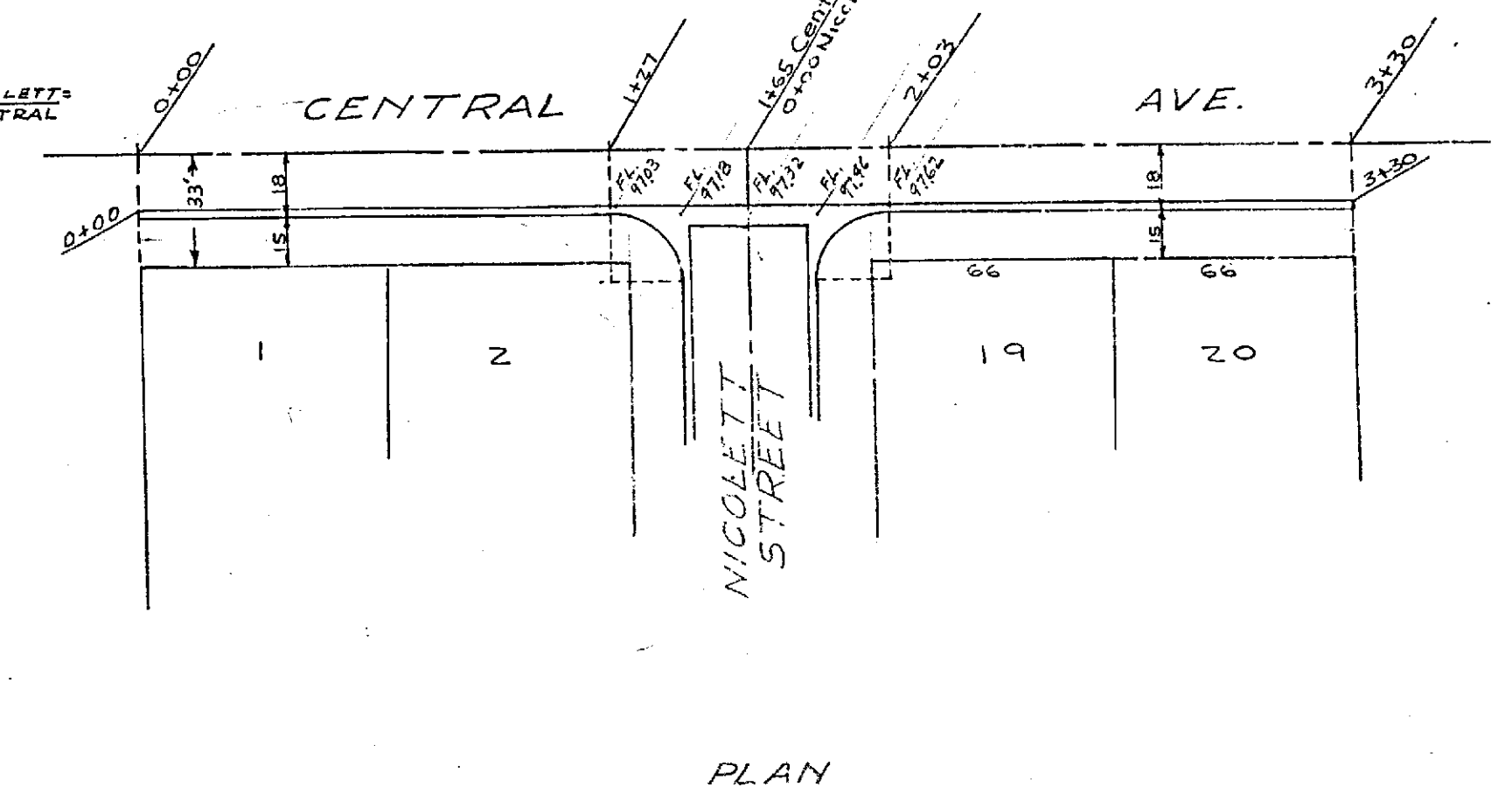
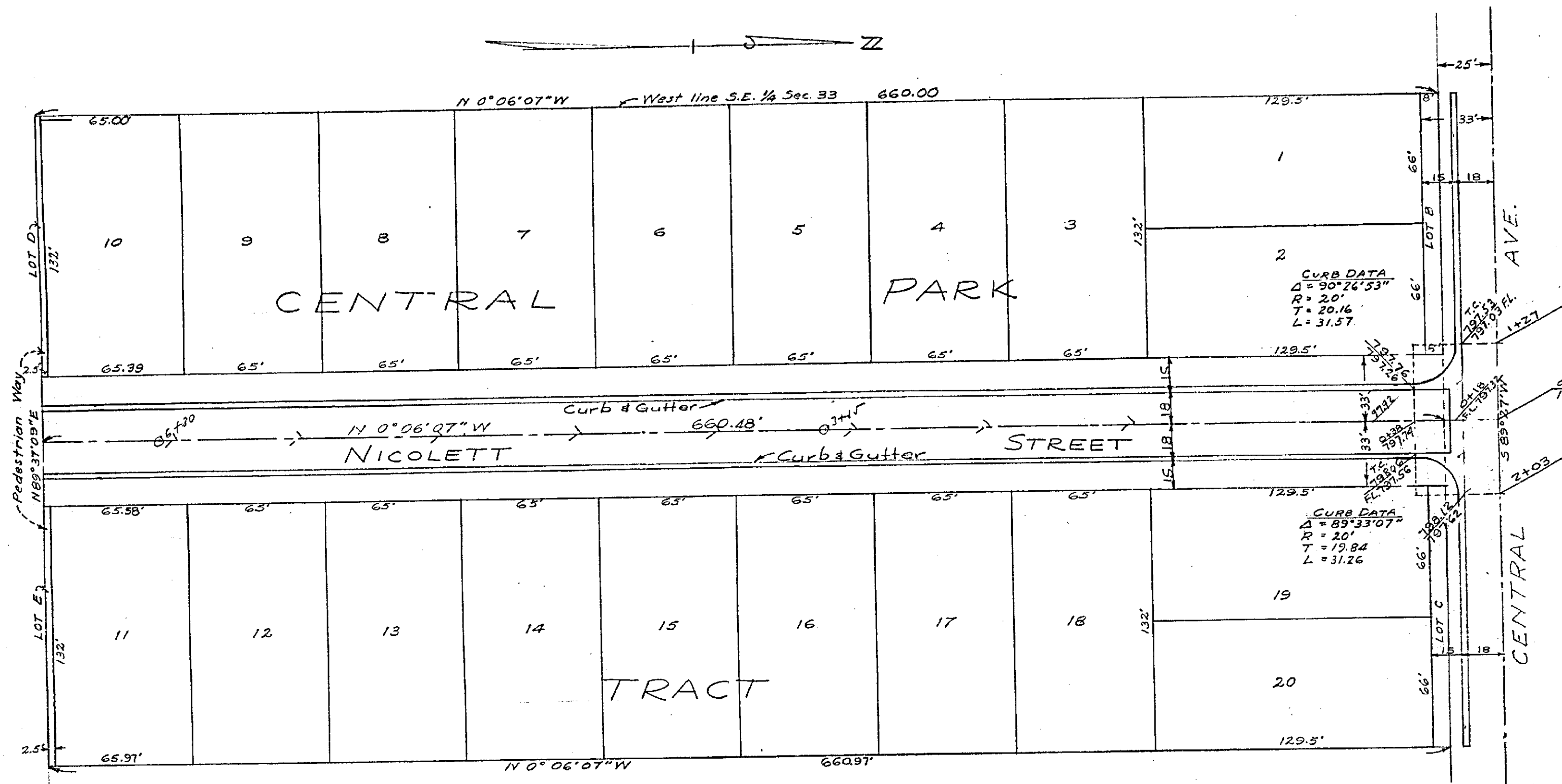
No 1093
STREET PLAN AND PROFILE
IN
CENTRAL PARK TRACT

ALBERT A. WEBB ASSOC.
CIVIL ENGINEERS
JULY 1952

PROPERTY OF
CITY OF RIVERSIDE
CITY ENGINEERING DEPT.



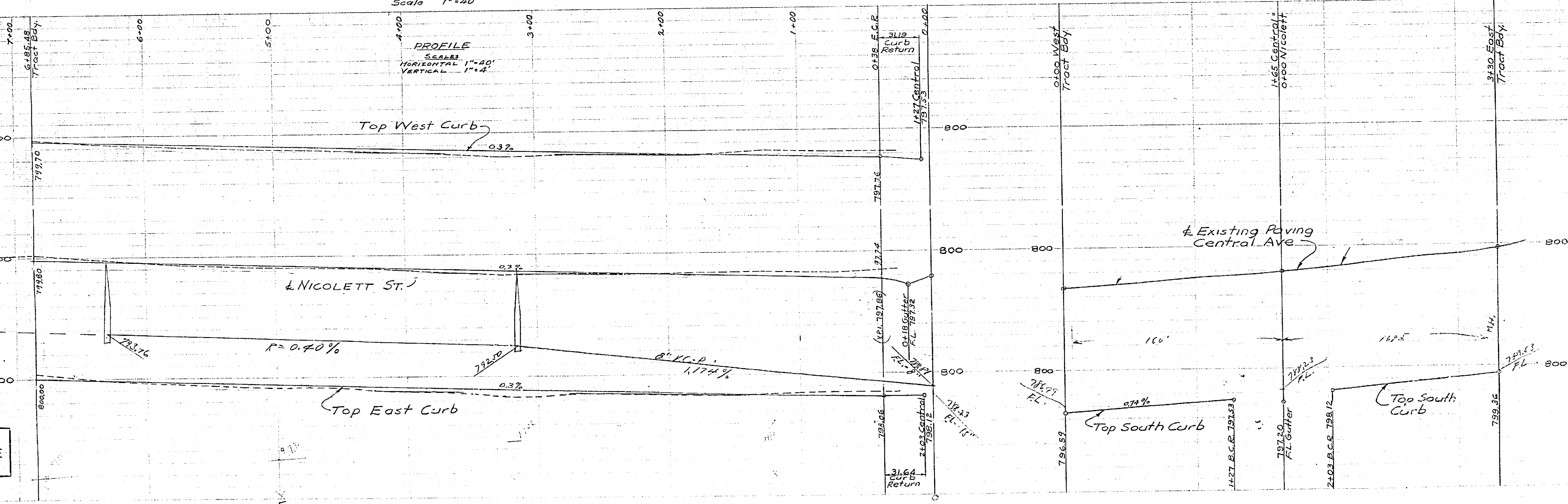
APPROVED *M. J. Irvine*
CITY ENGINEER



PLAN
Scale 1"=40'

PLAN
Scale 1"=40'

NOTE: Bench Mark is Spike in lead plug at end of curb return, N.E. Corner of intersection of Central Avenue and Carlo Drive
ELEV. 796.97



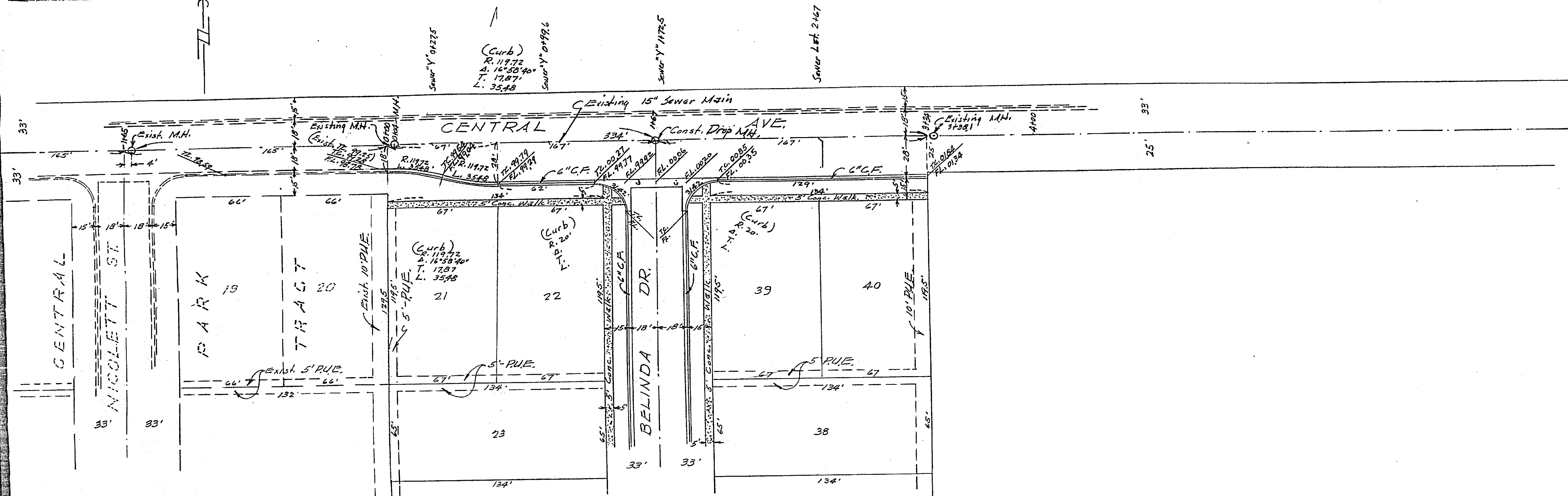
PROFILE
Scale HORIZONTAL 1"=40'
VERTICAL 1"=4'

PROPERTY OF
CITY OF RIVERSIDE
CITY ENGINEERING DEPT.

PROPERTY OF
CITY OF RIVERSIDE
CITY ENGINEERING DEPT.

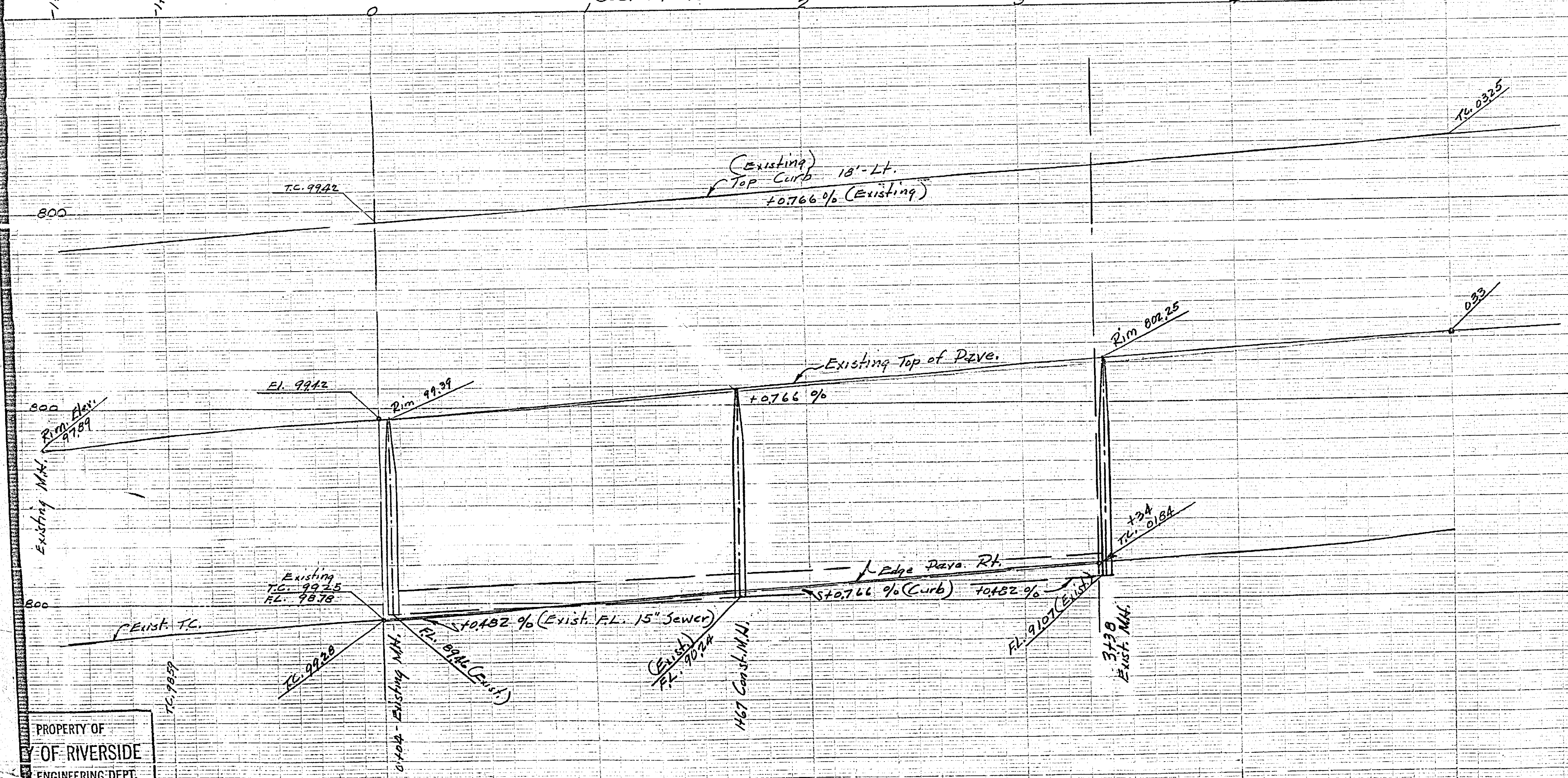
S.B. 200
W.O. 52-90

1093



MAP
Scale: 1"=40'

CENTRAL PARK TRACT NO. 2
PLAN & PROFILE
April 1954
Scale: Horiz. 1"=40'
Vert. 1"=4'
Donald J. McKee, Lic. Surveyor

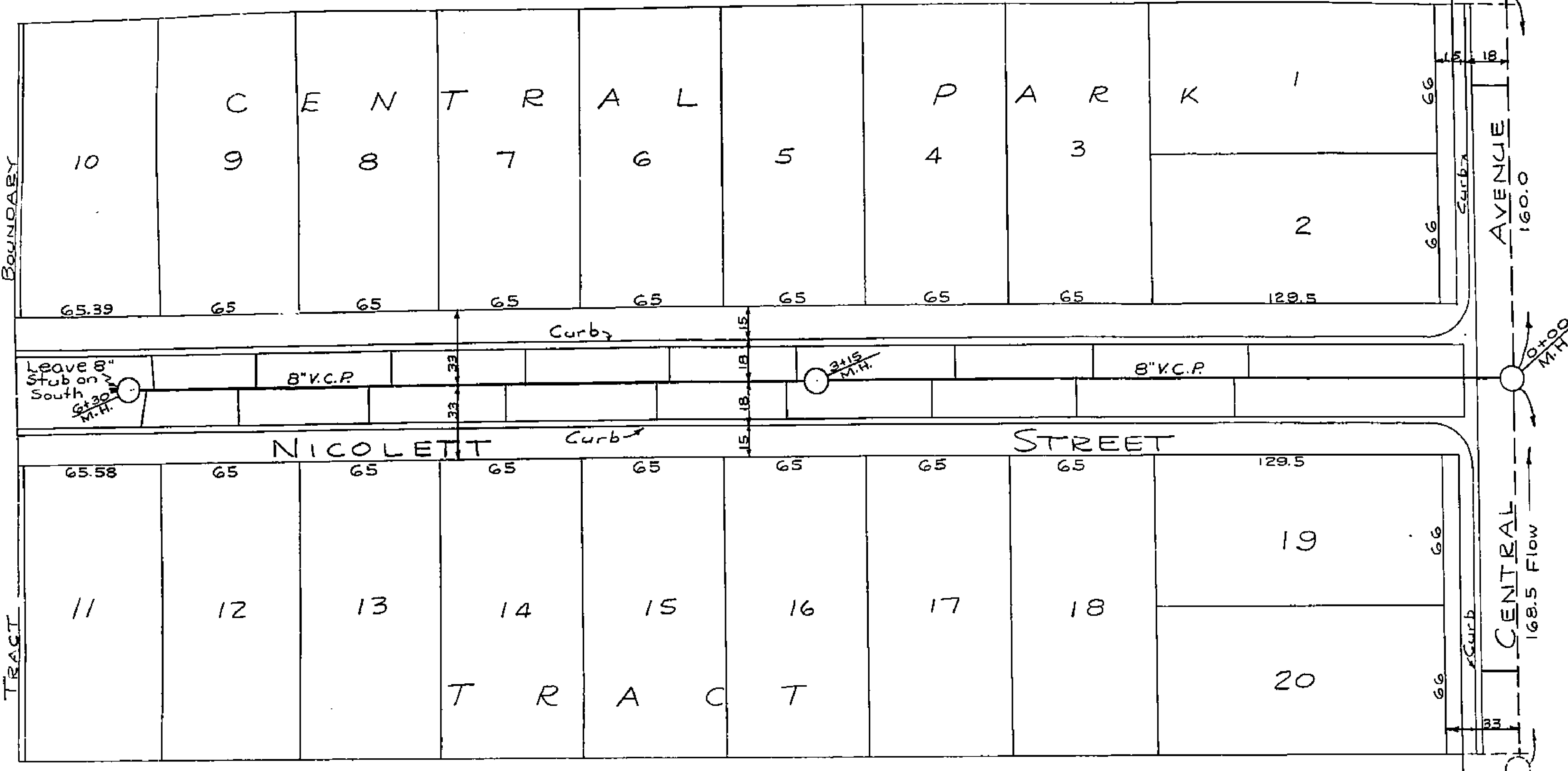


B.M.
Spk. & Id. N. curb Central Ave., 15' E. of
E. line of Archway.
Elev. 806.66

Approved: *M.H. Irvine* 1954
5/12/54
M.H. Irvine, City Engineer, Riverside, Calif.

1093

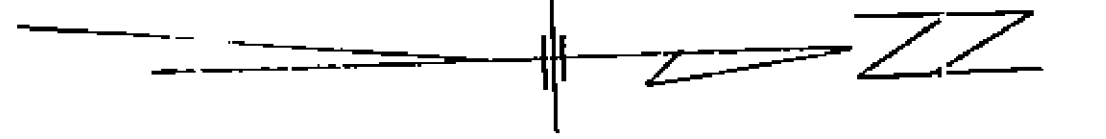
PROPERTY OF
CITY OF RIVERSIDE
CITY ENGINEERING DEPT.



SEWER PLANS
OF
NICOLETT STREET
IN
CENTRAL PARK TR.

PROPERTY OF
CITY OF RIVERSIDE
CITY ENGINEERING DEPT.

BY
ALBERT A. WEBB ASSOCIATES
CIVIL ENGINEERS
AUGUST - 1952
SCALE: - 1" = 40'

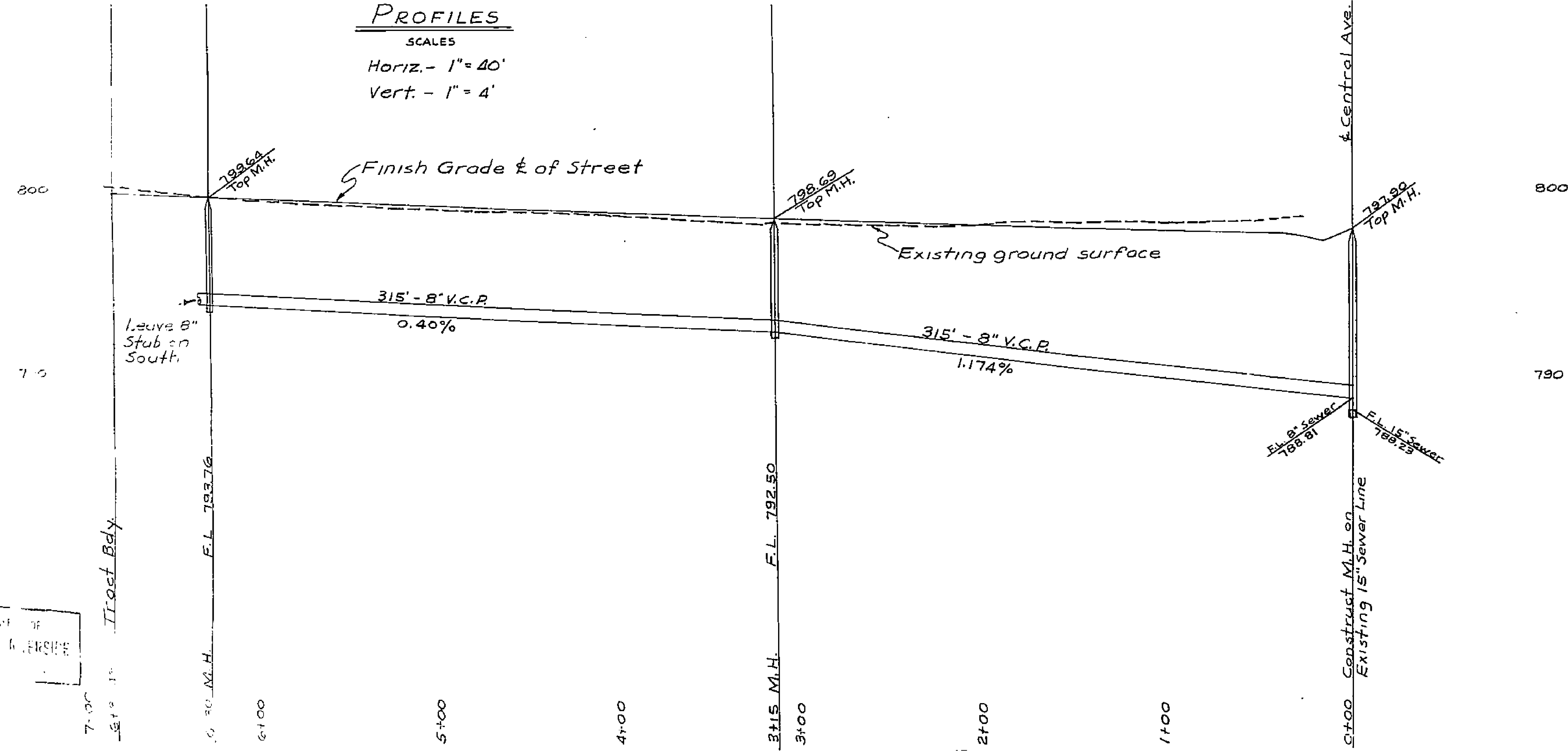


APPROVED M. H. Irvine.
CITY ENGINEER

PLAN

PROFILES

SCALES
Horiz. - 1" = 40'
Vert. - 1" = 4'



NOTE:- Bench Mark is Spike
in Lead plug at end
of curb return, N.E.
Corner of intersection
of Central Avenue
and Carlo Drive

Quantity Estimate

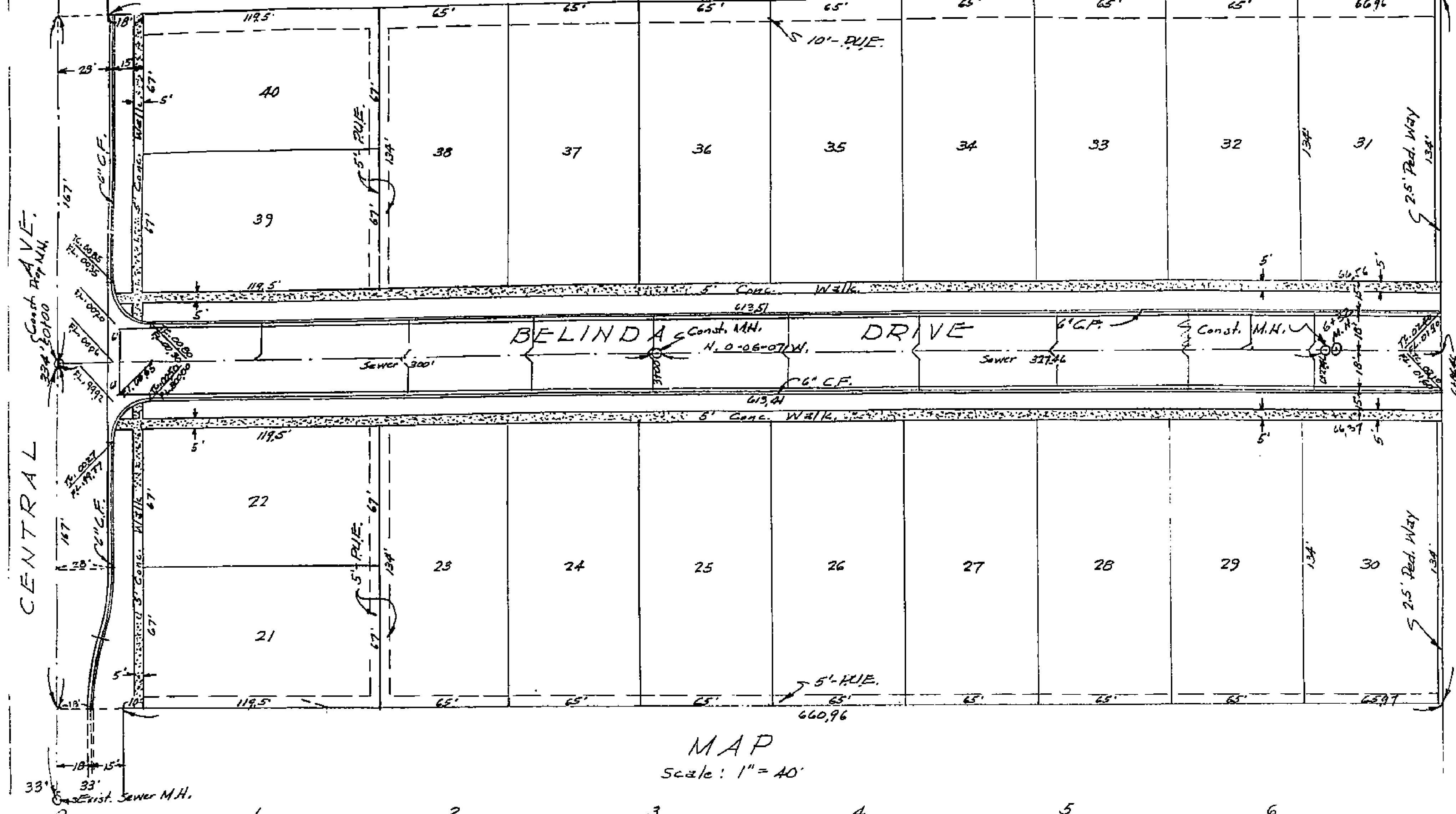
- 630' - 8" V.C.P.
- 3 - Std. Manholes
- 18 - 8"x4" Y Branches
- 360' - 4" V.C.P.

Y branches to be field located.

All work indicated hereon
to be performed in accordance
with standard specifications
of City of Riverside

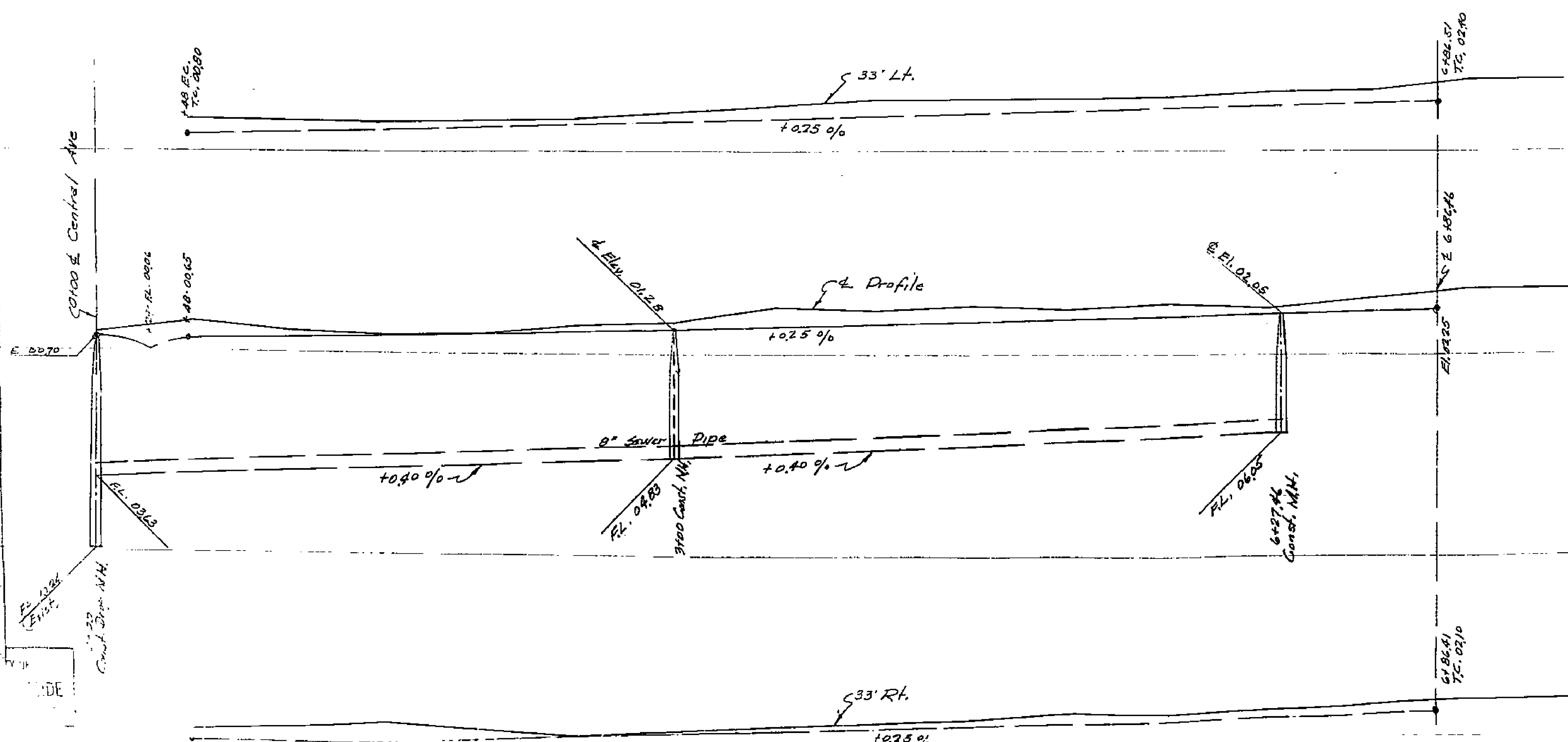
PROPERTY OF
CITY OF RIVERSIDE
CITY ENGINEERING DEPT.

1093



CENTRAL PARK TRACT NO.
PLAN & PROFILE
April, 1954
Scale: Horiz. 1" = 40'
Vert. 1" = 10'
Donald J. McKee, Lic. Surveyor.

D.M.
Spk. & Lt. N. Corb Central Ave, 15' E. of
E. line of Archway.
Elev. 806.66



Approved *M.H. Irvine* 1954
5/12/54
M.H. Irvine, City Engineer, Riverside Calif.