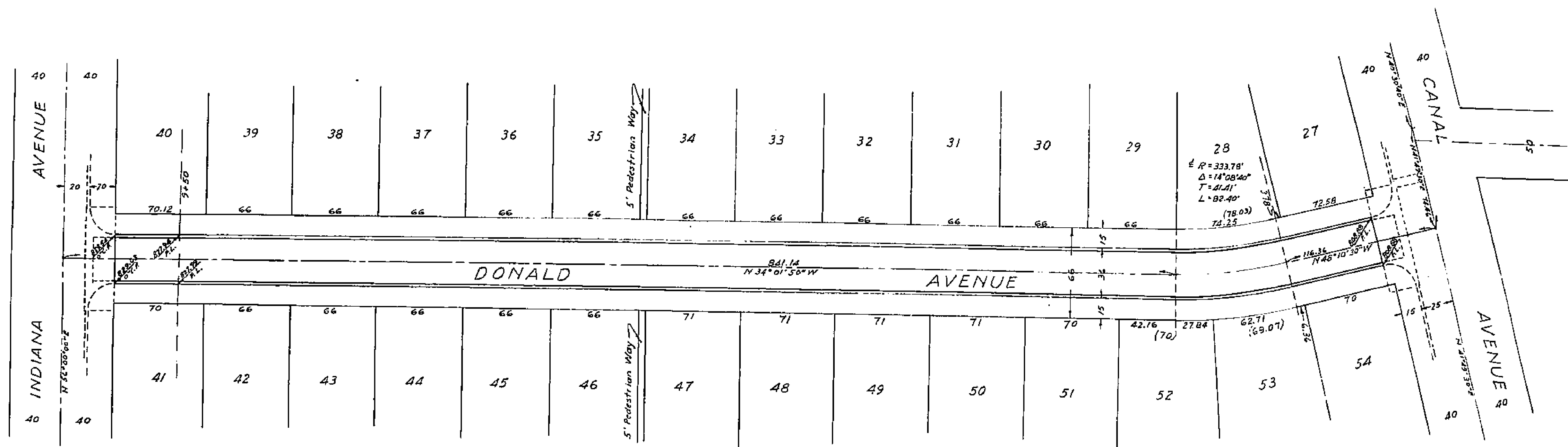


PROPERTY OF  
CITY OF RIVERSIDE  
CITY ENGINEERING DEPT.

N: 1094  
PROPERTY OF  
CITY OF RIVERSIDE  
CITY ENGINEERING DEPT.  
**STREET PLAN AND PROFILE**  
OF  
**DONALD AVENUE**  
IN  
**ARLINGTON PALMS**

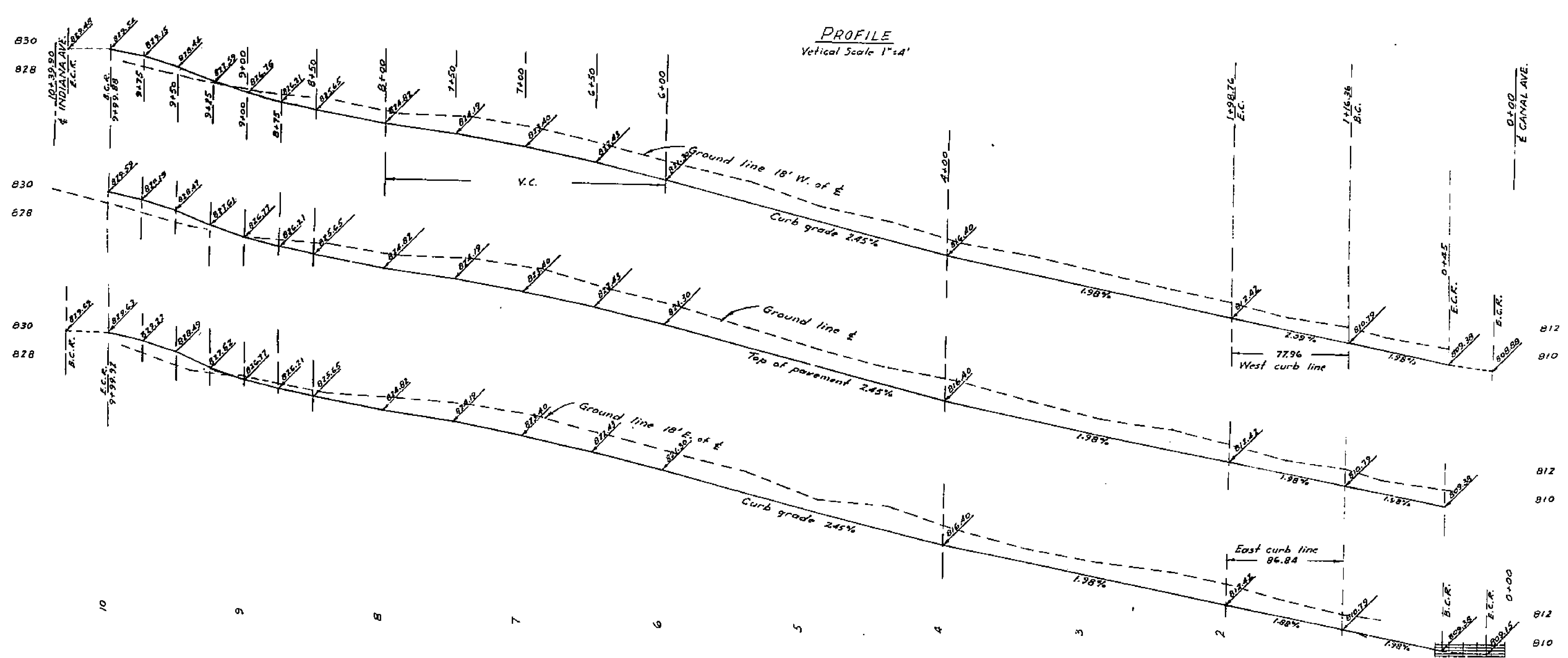
ALBERT A. WEBB ASSOCIATES  
CIVIL ENGINEERS

SEPTEMBER 1952 SCALE 1"=40'



PLAN  
Scale 1"=40'

PROFILE  
Vertical Scale 1"=4'



Approved this 27 day of October, 1952.  
M. H. Swain  
City Engineer, City of Riverside

PROPERTY OF  
CITY OF RIVERSIDE  
CITY ENGINEERING DEPT.

PROPERTY OF  
CITY OF RIVERSIDE  
CITY ENGINEERING DEPT.

1094

PROPERTY OF  
CITY OF RIVERSIDE  
CITY ENGINEER'S OFFICE

N<sup>o</sup> 1094

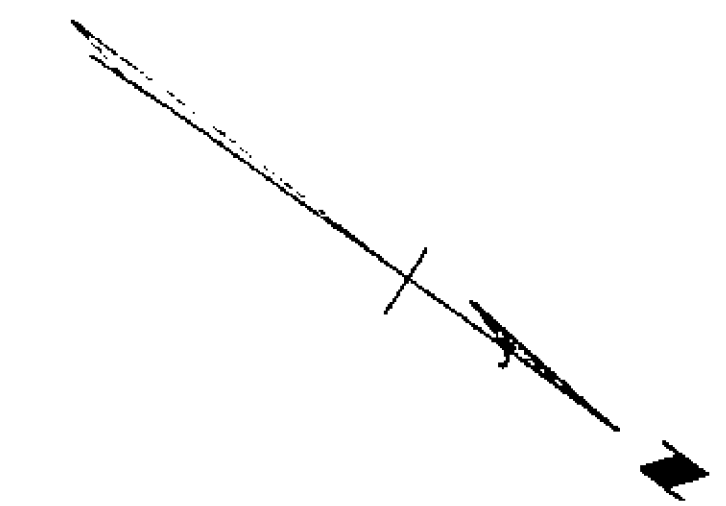
**STREET PLAN AND PROFILE**

OF  
**WILBUR STREET**

IN  
**ARLINGTON PALMS**

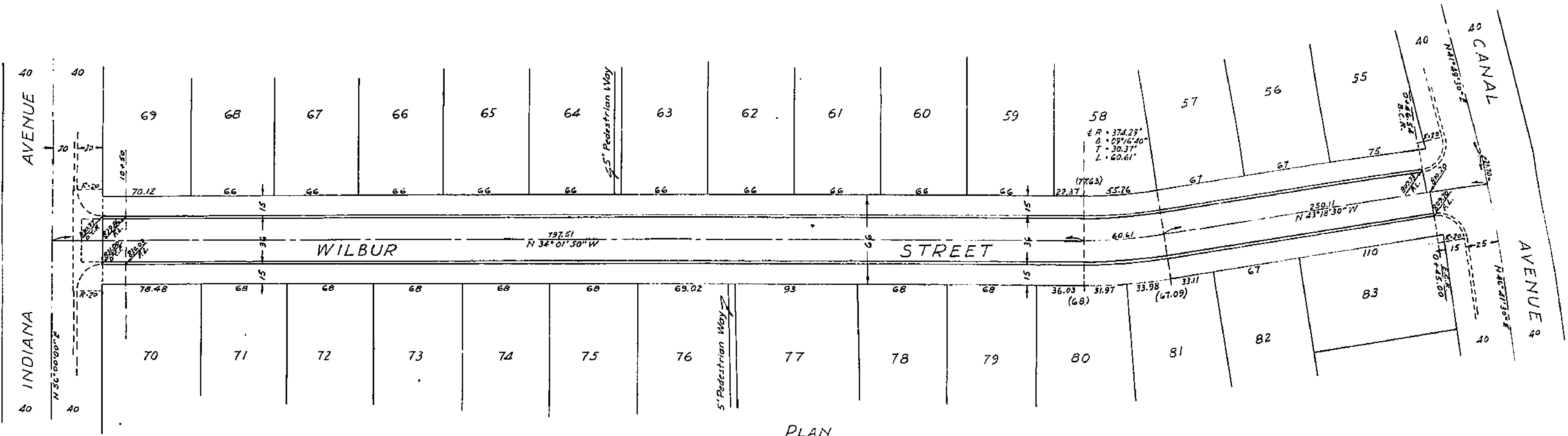
ALBERT A. WEBB ASSOCIATES  
CIVIL ENGINEERS

SEPTEMBER 1952 SCALE 1" = 40'



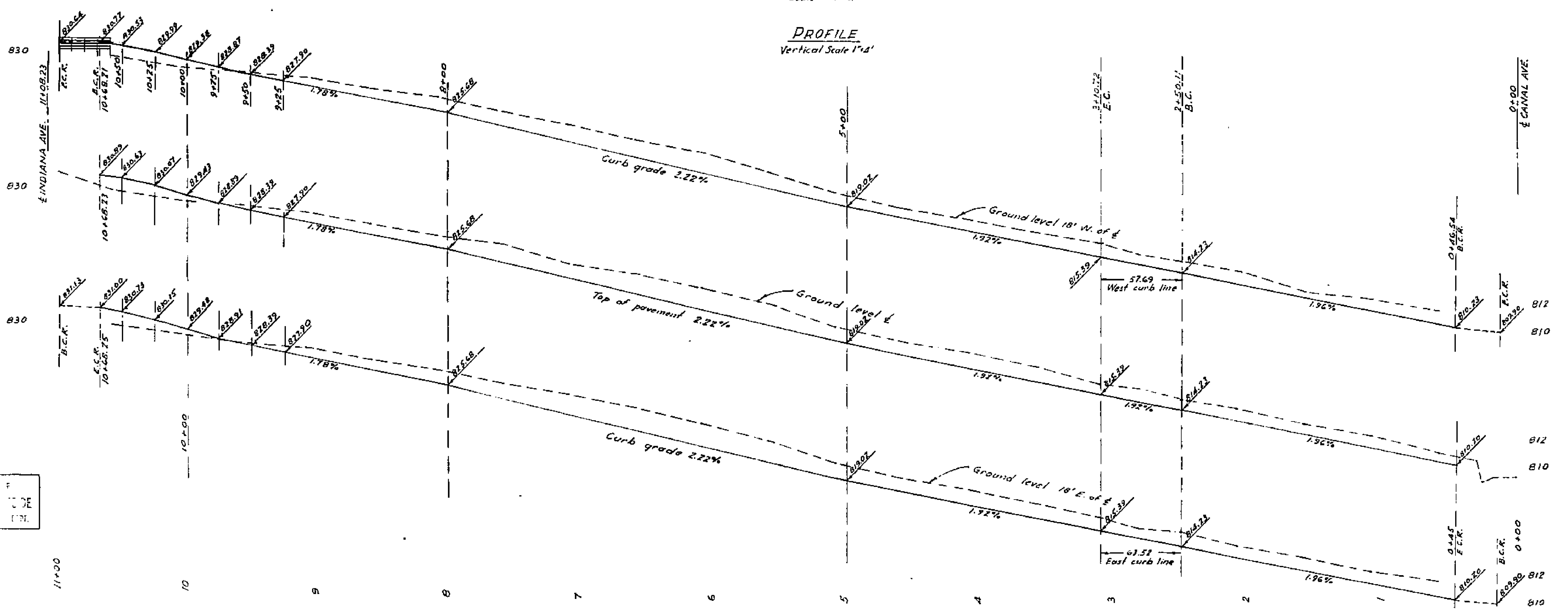
Approved this 2<sup>nd</sup> day of October, 1952  
*M. H. Irvine*  
City Engineer, City of Riverside

PROPERTY OF  
CITY OF RIVERSIDE  
CITY ENGINEER'S OFFICE



PLAN  
Scale 1" = 40'

PROFILE  
Vertical Scale 1" = 4'



PROPERTY OF  
CITY OF RIVERSIDE  
CITY ENGINEER'S OFFICE

PROPERTY OF  
CITY OF RIVERSIDE  
CITY ENGINEER'S OFFICE

1094

PROPERTY OF  
CITY OF RIVERSIDE  
CITY ENGINEERING DEPT.

No 1094

**STREET PLAN AND PROFILE**  
OF  
**JACKSON STREET**  
IN  
**ARLINGTON PALMS**

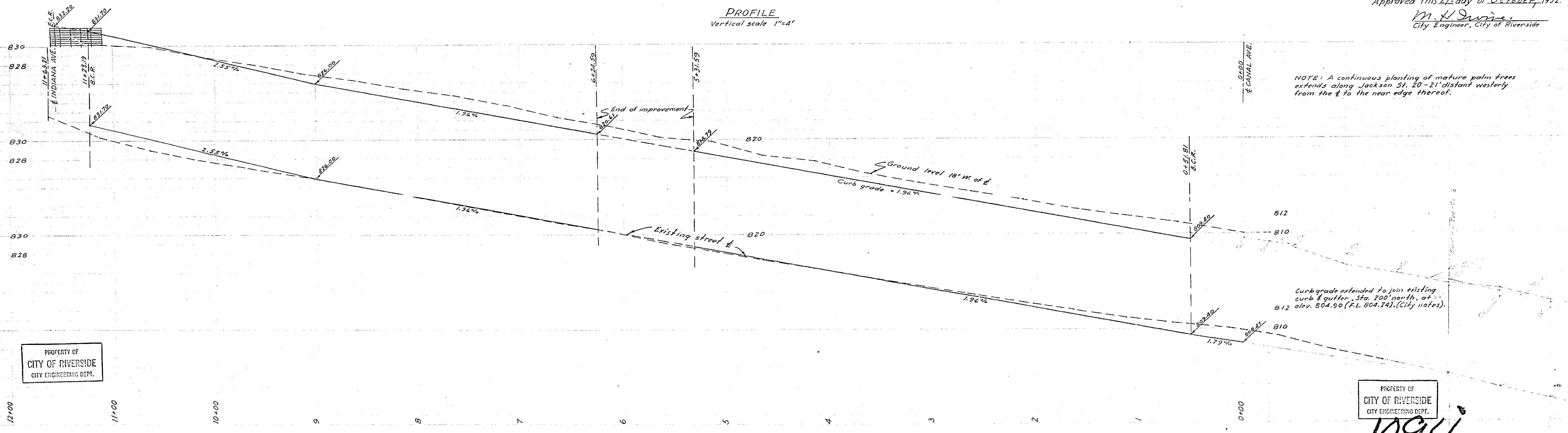
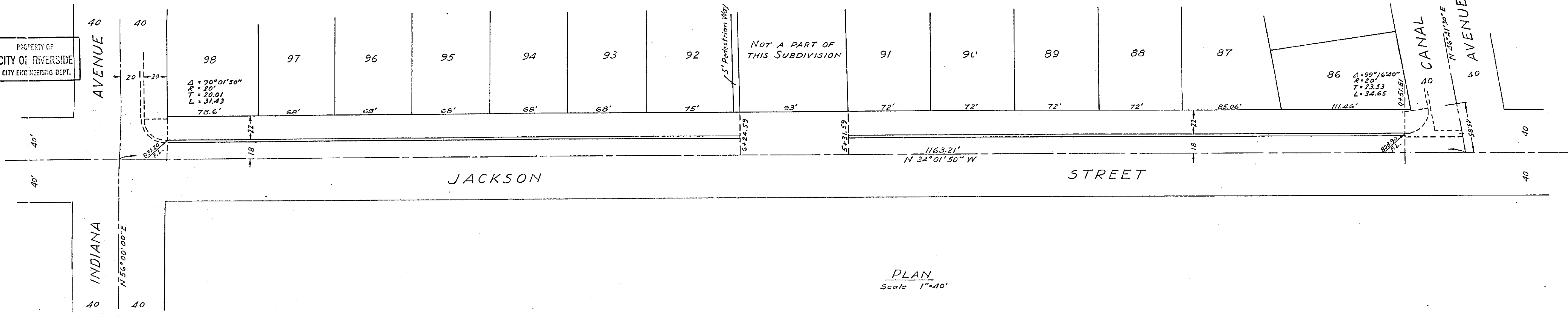
ALBERT A WEBB ASSOCIATES  
CIVIL ENGINEERS

SEPTEMBER 1952 SCALE 1" = 40'

Approved this 27<sup>th</sup> day of October, 1952.  
*M. H. Davis*  
City Engineer, City of Riverside

NOTE: A continuous planting of mature palm trees extends along Jackson St. 20'-21' distant westerly from the  $\frac{1}{2}$  to the near edge thereof.

Curbgrade extended to join existing curb & gutter Sta. 200' north of B12 elev. 804.90 (P.L. 804.74). (City notes)



PROPERTY OF  
CITY OF RIVERSIDE  
CITY ENGINEERING DEPT.

INDIANA AVENUE

PROPERTY OF  
CITY OF RIVERSIDE  
CITY ENGINEERING DEPT.

PROPERTY OF  
CITY OF RIVERSIDE  
CITY ENGINEERING DEPT.

1094

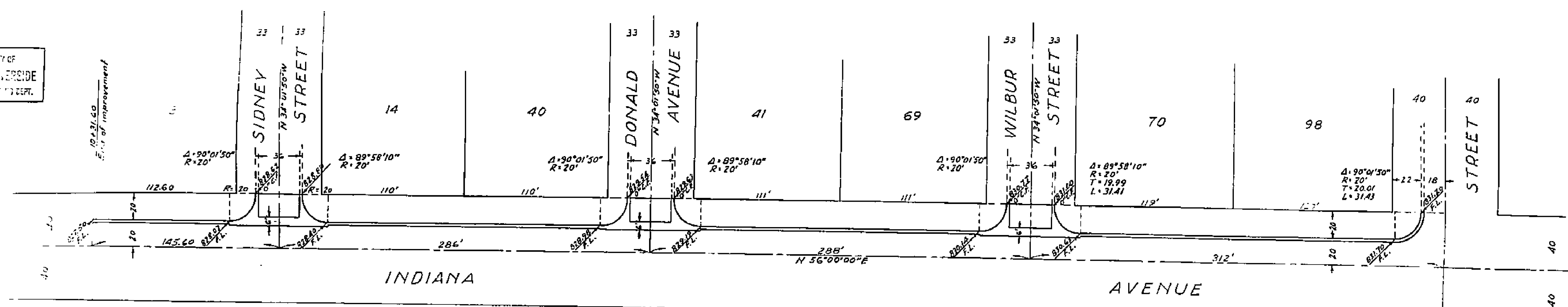
PROPERTY OF  
CITY OF RIVERSIDE  
CIVIL ENGINEERS DEPT.

N-1094  
**STREET PLAN AND PROFILE**  
OF  
**INDIANA AVENUE**  
IN  
**ARLINGTON DALMS**

PROPERTY OF  
CITY OF RIVERSIDE  
CIVIL ENGINEERS DEPT.

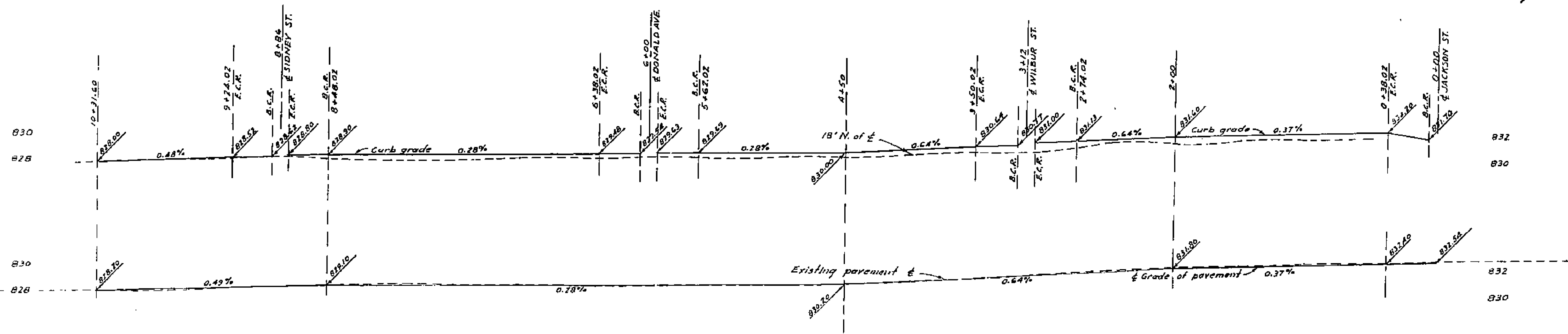
ALBERT A. WEBB ASSOCIATES  
CIVIL ENGINEERS

SEPTEMBER 1952 SCALE 1"=40'



**PLAN**  
Scale 1"=40'

**PROFILE**  
Vertical scale 1"=4'



Approved this 27<sup>th</sup> day of October, 1952  
*M.H. Swine*  
City Engineer, City of Riverside

**NOTES:**  
Bench mark is R.R. spike in eucalyptus tree at the N.W. corner of Indiana Ave. and Jackson St., elev. 833.16.  
Curb and gutter, and pavement to be constructed in accordance with standard specifications of the City of Riverside, on file in the office of the City Engineer.

PROPERTY OF  
CITY OF RIVERSIDE  
CIVIL ENGINEERS DEPT.

1094

PROPERTY OF  
CITY OF RIVERSIDE  
CITY ENGINEERING DEPT.

No 1094  
STREET PLAN AND PROFILE  
OF  
SIDNEY STREET  
IN  
ARLINGTON PALMS

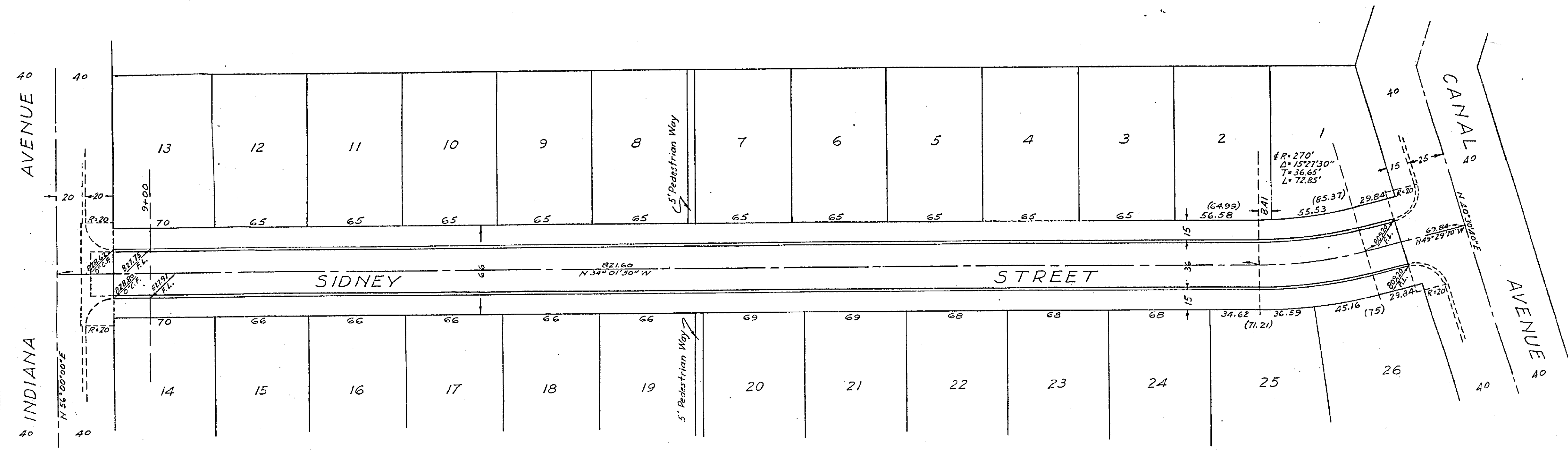
ALBERT A. WEBB ASSOCIATES  
CIVIL ENGINEERS

SEPTEMBER 1952 SCALE 1"=40'

Approved this 27<sup>th</sup> day of October, 1952.

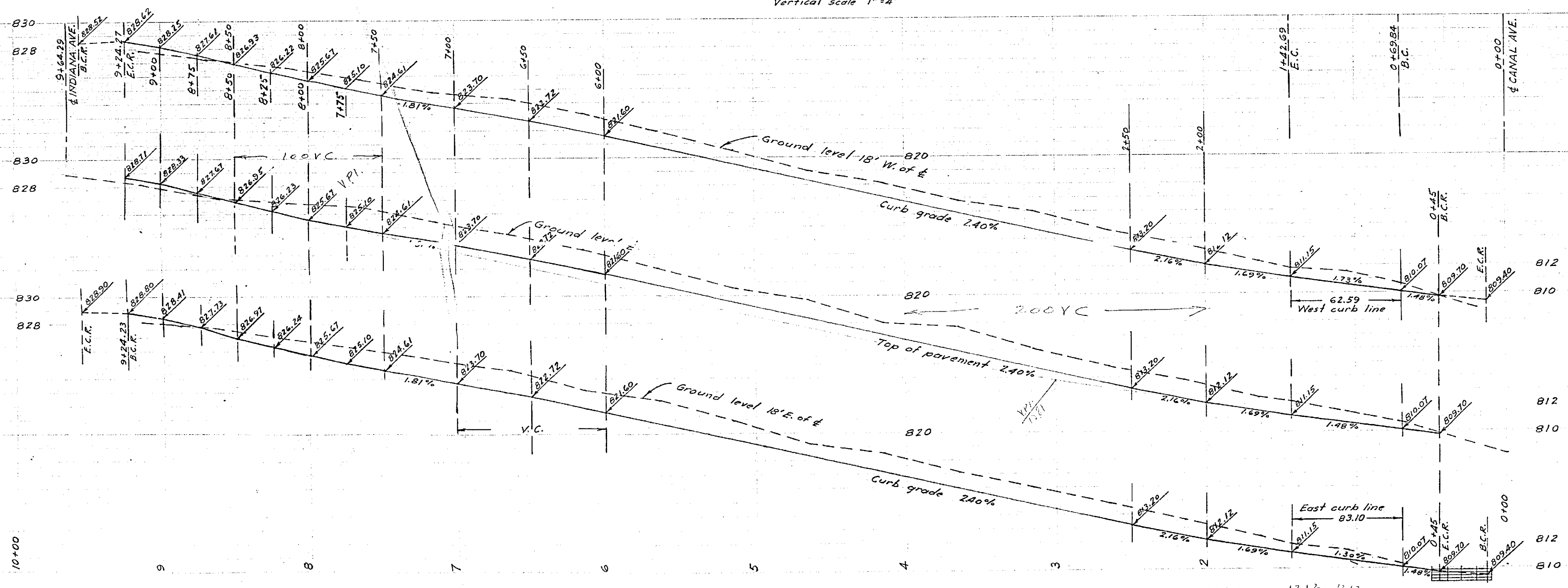
*M. H. Irvine*  
City Engineer, City of Riverside

PROPERTY OF  
CITY OF RIVERSIDE  
CITY ENGINEERING DEPT.



PLAN  
Scale 1"=40'

PROFILE  
Vertical scale 1"=4'



PROPERTY OF  
CITY OF RIVERSIDE  
CITY ENGINEERING DEPT.

PROPERTY OF  
CITY OF RIVERSIDE  
CITY ENGINEERING DEPT.

1094

PROPERTY OF  
CITY OF RIVERSIDE  
CITY ENGINEERING DEPT.

N<sup>o</sup> 1094

**STREET PLAN AND PROFILE**

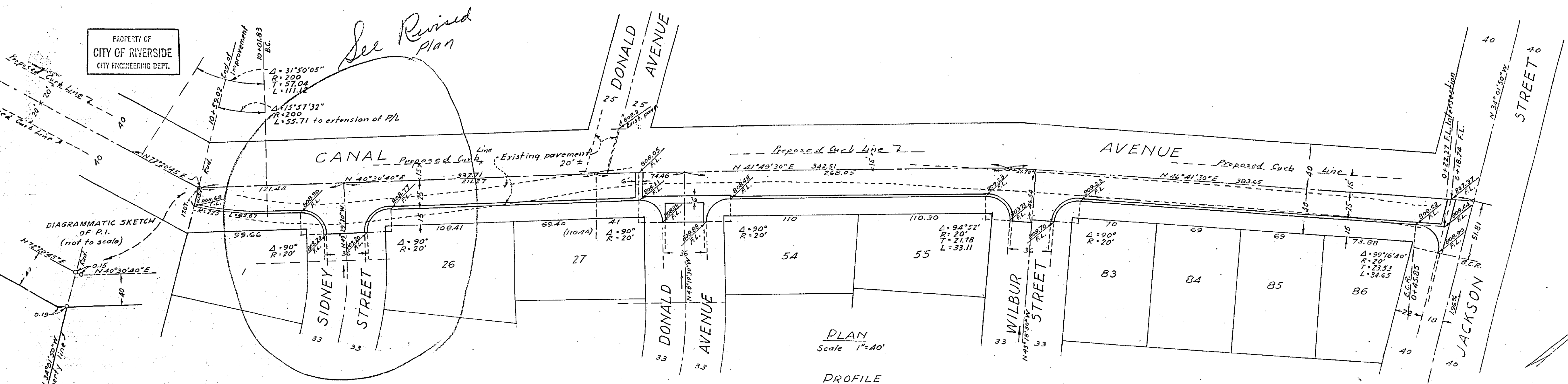
OF  
**CANAL AVENUE**  
IN  
**ARLINGTON PALMS**

ALBERT A. WEBB ASSOCIATES  
CIVIL ENGINEERS

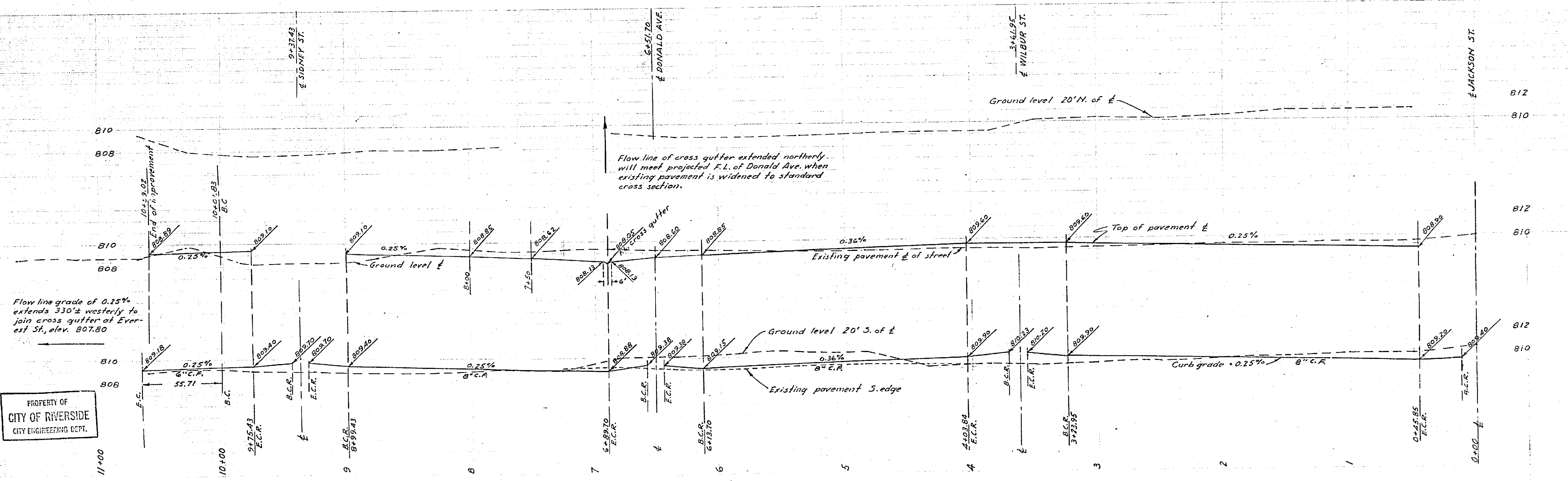
SEPTEMBER 1952 SCALE 1"=40'

Approved this 27<sup>th</sup> day of October, 1952.  
*M. S. Davis*  
City Engineer, City of Riverside

PROPERTY OF  
CITY OF RIVERSIDE  
CITY ENGINEERING DEPT.



NOTES:—  
Curve data, where  $\Delta = 90^\circ$  #  $R = 20'$ ;  $T = 20'$  #  $L = 31.42'$



PROPERTY OF  
CITY OF RIVERSIDE  
CITY ENGINEERING DEPT.

PROPERTY OF  
CITY OF RIVERSIDE  
CITY ENGINEERING DEPT.

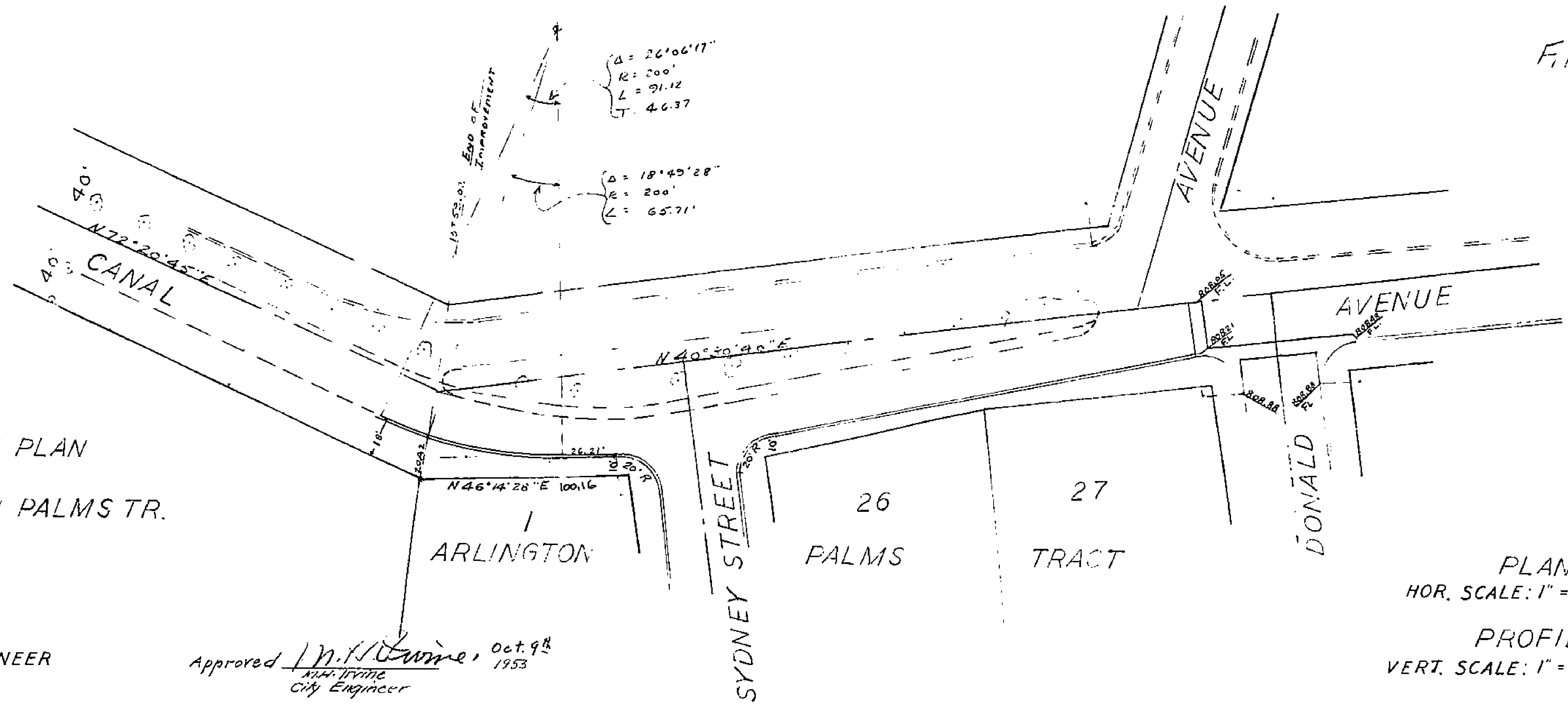
1094

File with 1094

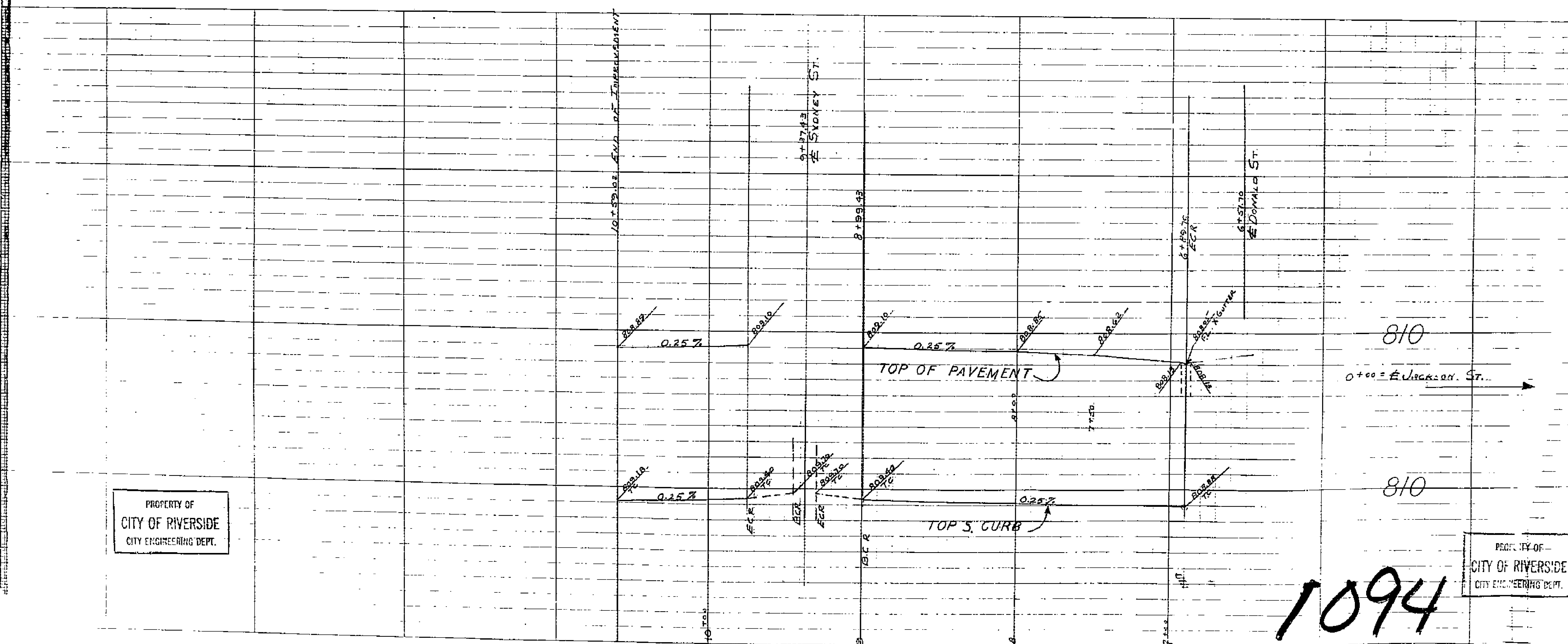
REVISED STREET PLAN  
OF A PORTION OF  
CANAL AVE-ARLINGTON PALMS TR.

GORDON STEWART - CIVIL ENGINEER  
OCT. 1953

Approved *W. K. Irvine*, Oct. 9<sup>th</sup> 1953  
City Engineer



PLAN  
HOR. SCALE: 1" = 40'  
PROFILE  
VERT. SCALE: 1" = 4'



PROPERTY OF  
CITY OF RIVERSIDE  
CITY ENGINEERING DEPT.

PROPERTY OF  
CITY OF RIVERSIDE  
CITY ENGINEERING DEPT.

1094