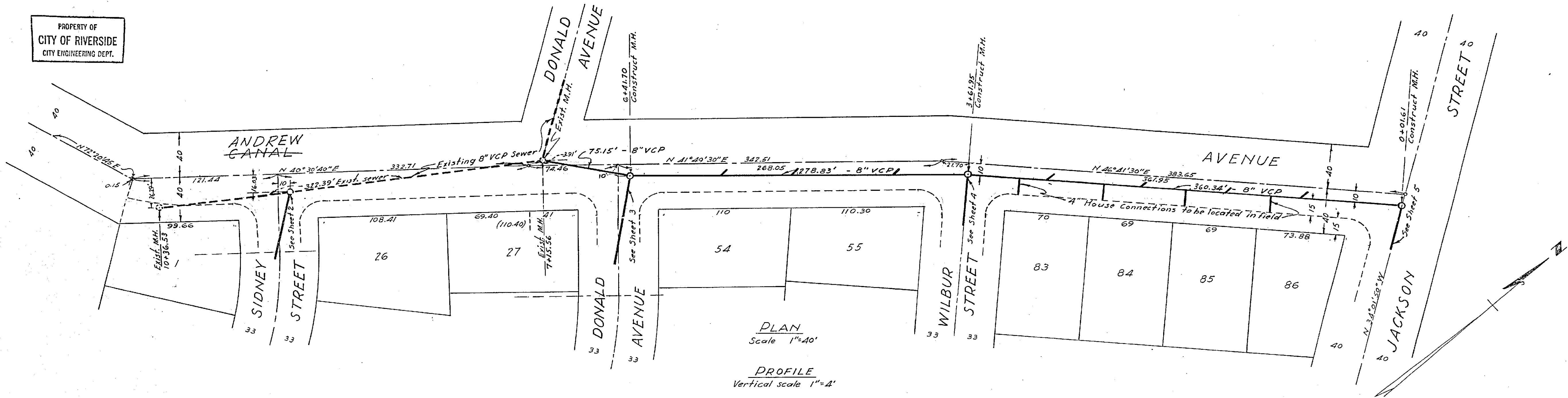


N^o 1094-A
SEWER PLAN AND PROFILE
OF
CANAL AVENUE
IN
ARLINGTON PALMS

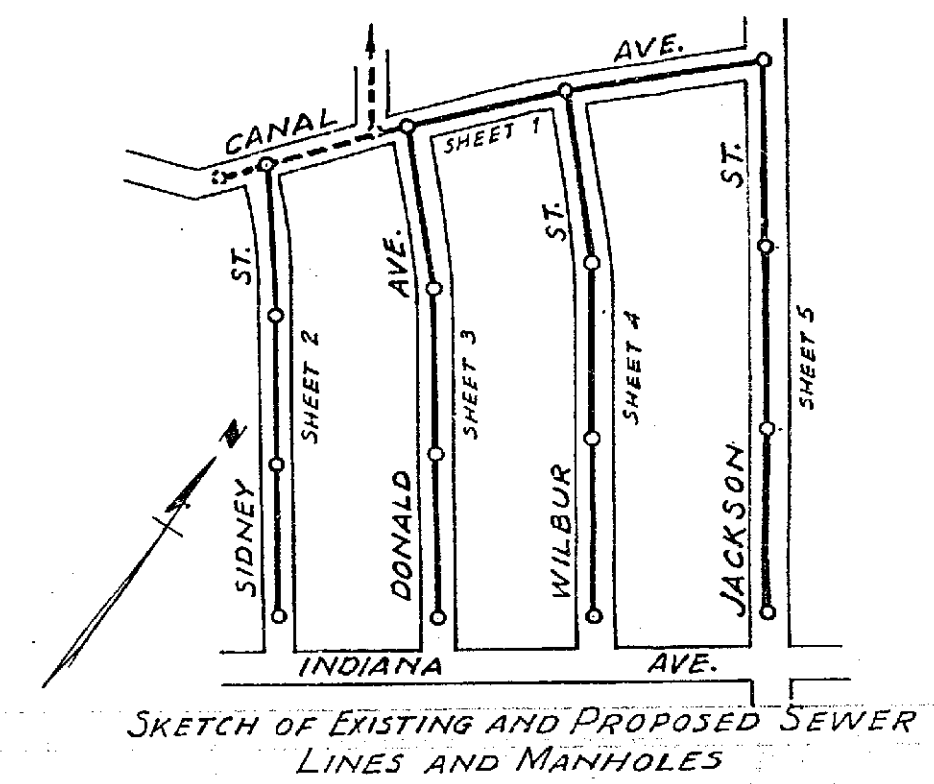
ALBERT A. WEBB ASSOCIATES
CIVIL ENGINEERS

SEPTEMBER 1952 SCALE 1"=40'

PROPERTY OF
CITY OF RIVERSIDE
CITY ENGINEERING DEPT.



PLAN
Scale 1"=40'
PROFILE
Vertical scale 1"=4'



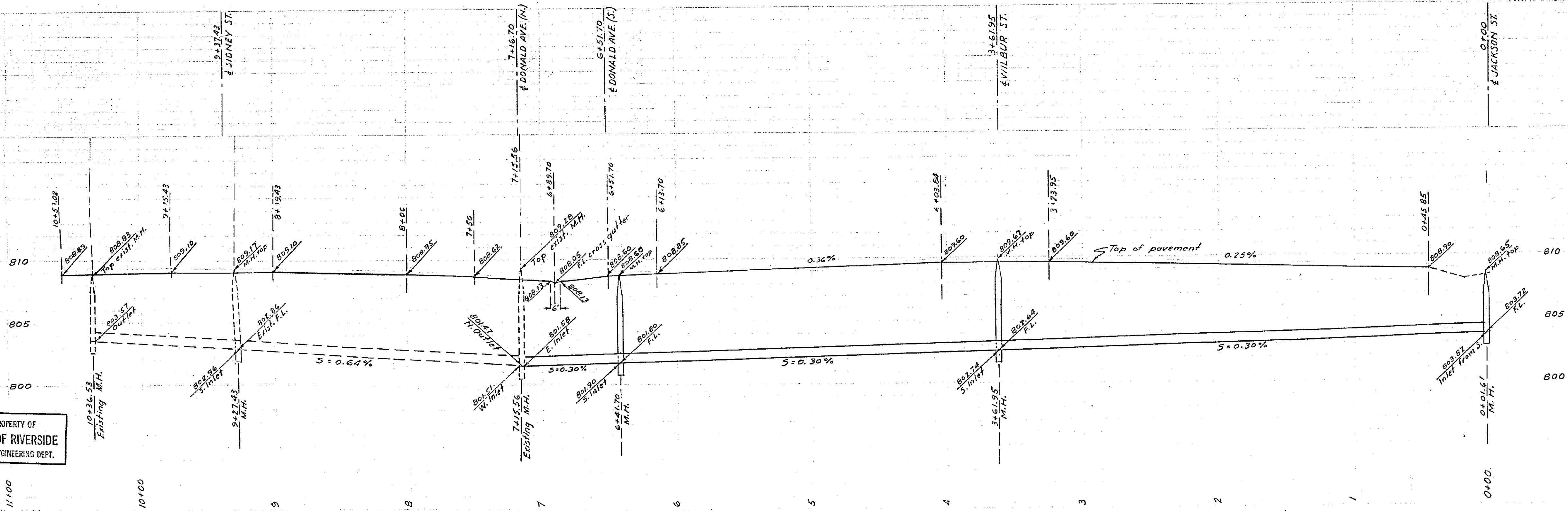
SKETCH OF EXISTING AND PROPOSED SEWER LINES AND MANHOLES

Approved this 24 day of Oct. 1952
M. H. Irvine
City Engineer, City of Riverside

NOTES:
Manholes, pipe, and construction shall be in accordance with specifications on file with the City Engineer, City of Riverside.

LIST OF MATERIALS

	CANAL AVE.	SIDNEY ST.	DONALD AVE.	WILBUR ST.	JACKSON ST.	TOTAL
MANHOLES	3	4	3	3	3	16
8" V.C.P.	714.32'	848.48'	929.41'	997.58'	1044.47'	4534.26'
8" x 4" WYES	11	26	28	28	13	106
4" HOUSE COM.	60'	468'	504'	504'	216'	1752'



PROPERTY OF
CITY OF RIVERSIDE
CITY ENGINEERING DEPT.

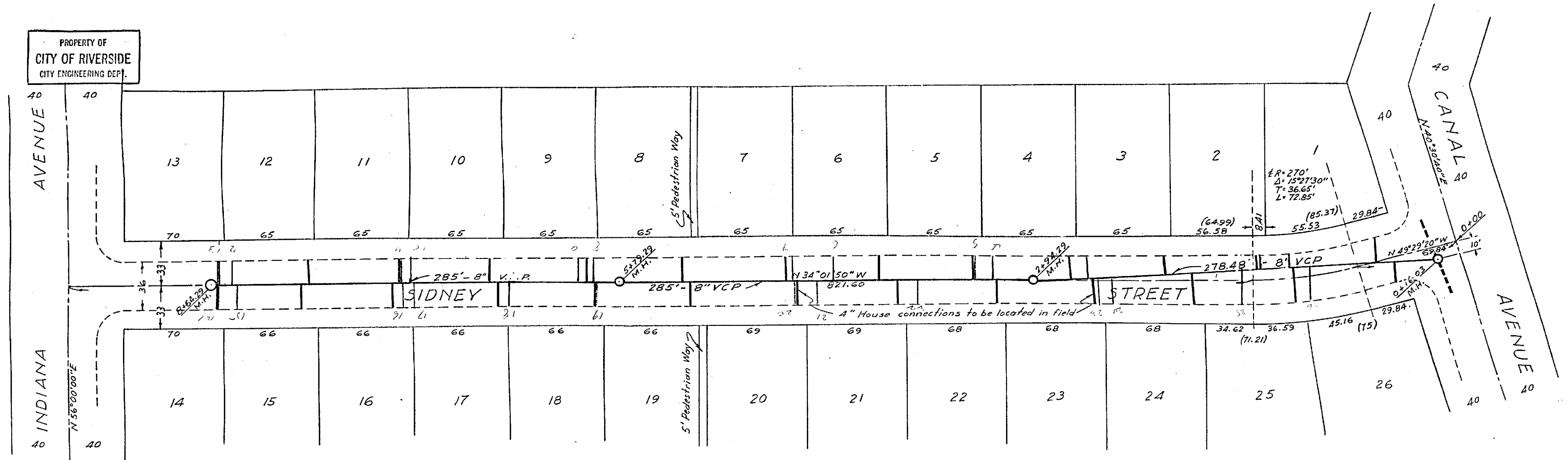
PROPERTY OF
CITY OF RIVERSIDE
CITY ENGINEERING DEPT.

1094A FILE NO 5A-301

N^o 1094-A
SEWER PLAN AND PROFILE
OF
SIDNEY STREET
IN
ARLINGTON DALMS

ALBERT A. WEBB ASSOCIATES
CIVIL ENGINEERS
SEPTEMBER 1952 SCALE 1"=40'

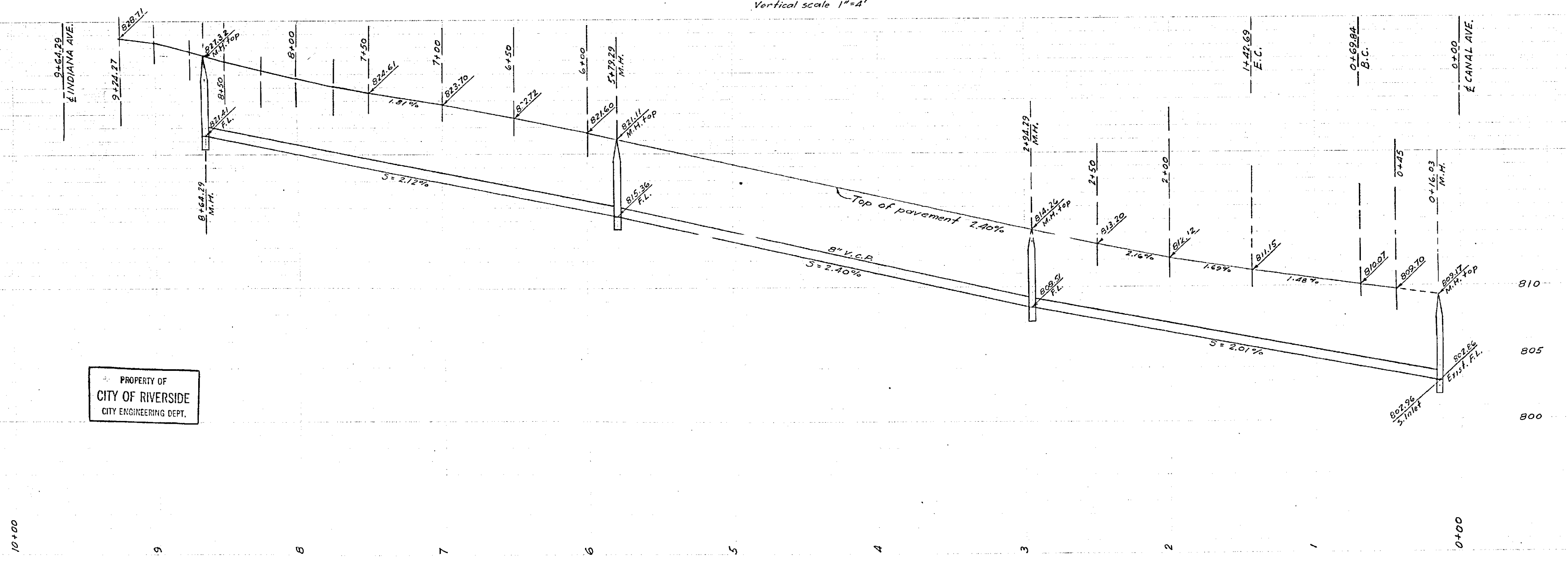
PROPERTY OF
CITY OF RIVERSIDE
CITY ENGINEERING DEPT.



PLAN
Scale 1"=40'

PROFILE
Vertical scale 1"=4'

Approved this 24 day of Oct. 1952
M. H. Durkin
City Engineer, City of Riverside



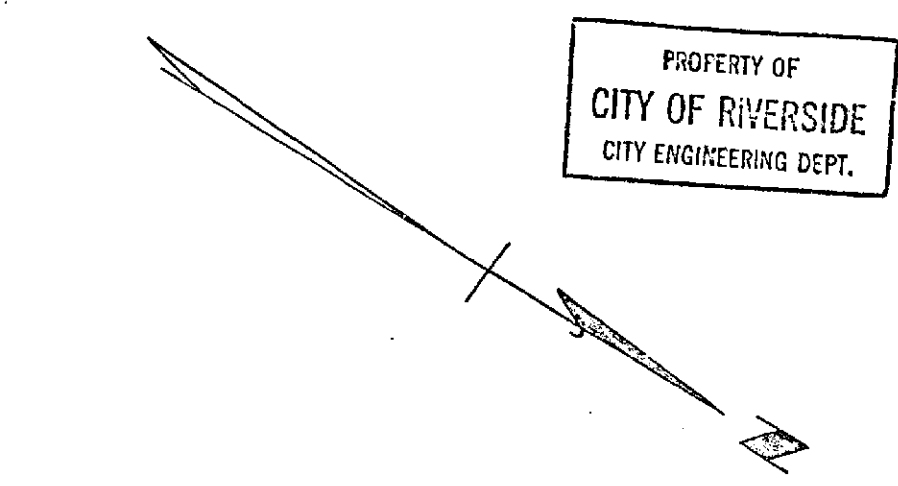
PROPERTY OF
CITY OF RIVERSIDE
CITY ENGINEERING DEPT.

PROPERTY OF
CITY OF RIVERSIDE
CITY ENGINEERING DEPT.

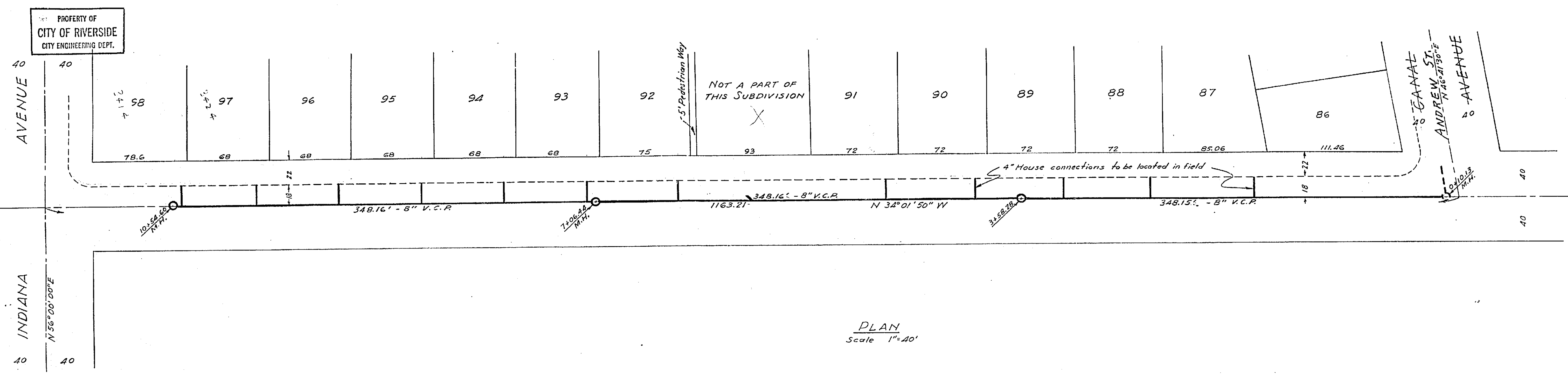
1094A

N^o 1094-A
 SEWER PLAN AND PROFILE
 OF
JACKSON STREET
 IN
ARLINGTON PALMS

ALBERT A. WEBB ASSOCIATES
 CIVIL ENGINEERS
 SEPTEMBER 1952 SCALE 1"=40'

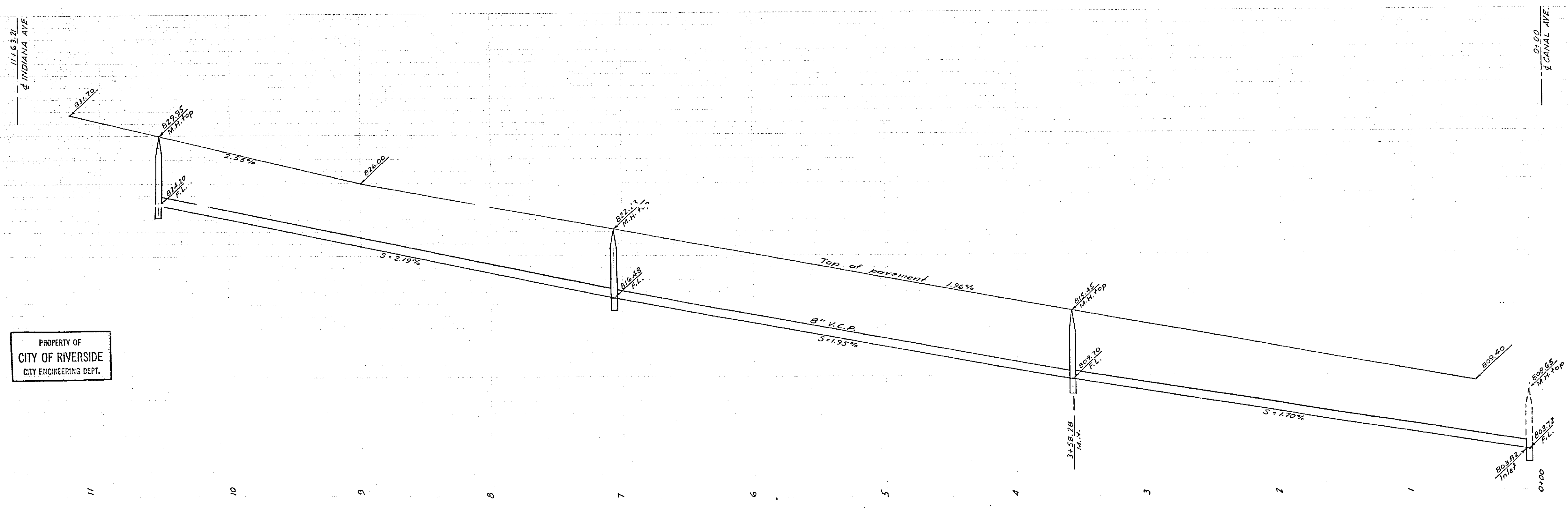


Approved this 24 day of Oct. 1952.
 M. H. Irvine
 City Engineer, City of Riverside



PLAN
 Scale 1"=40'

PROFILE
 Vertical scale 1"=2'



PROPERTY OF
 CITY OF RIVERSIDE
 CITY ENGINEERING DEPT.

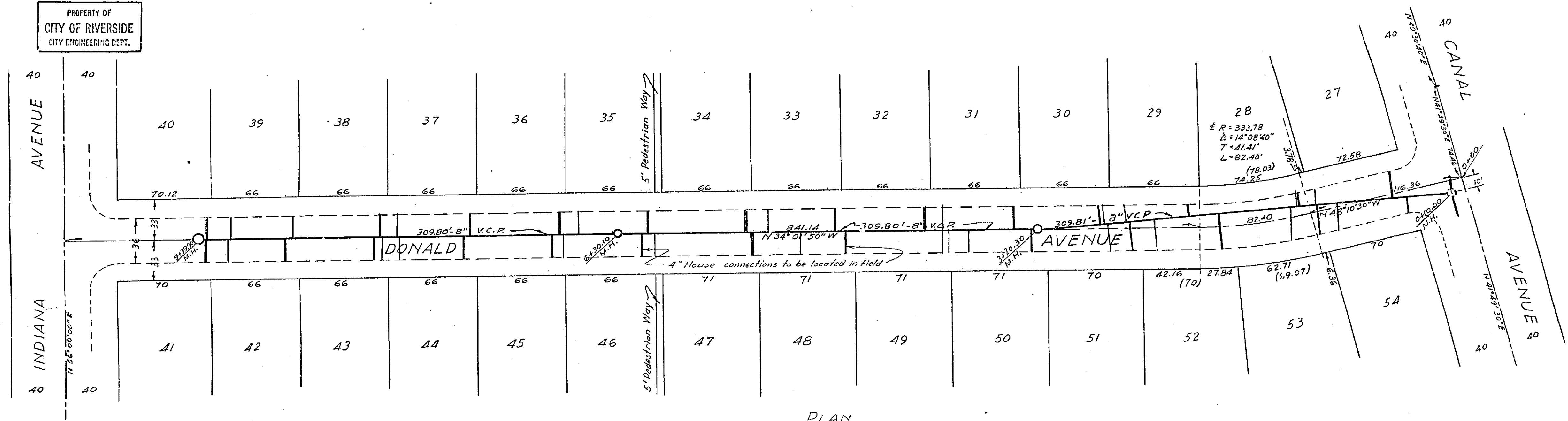
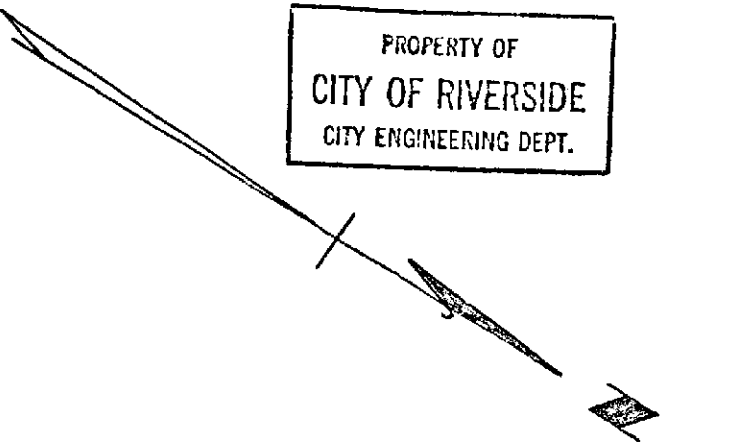
PROPERTY OF
 CITY OF RIVERSIDE
 CITY ENGINEERING DEPT.

1094A

N=1094-A
SEWER PLAN AND PROFILE
OF
DONALD AVENUE
IN
ARLINGTON DALMS

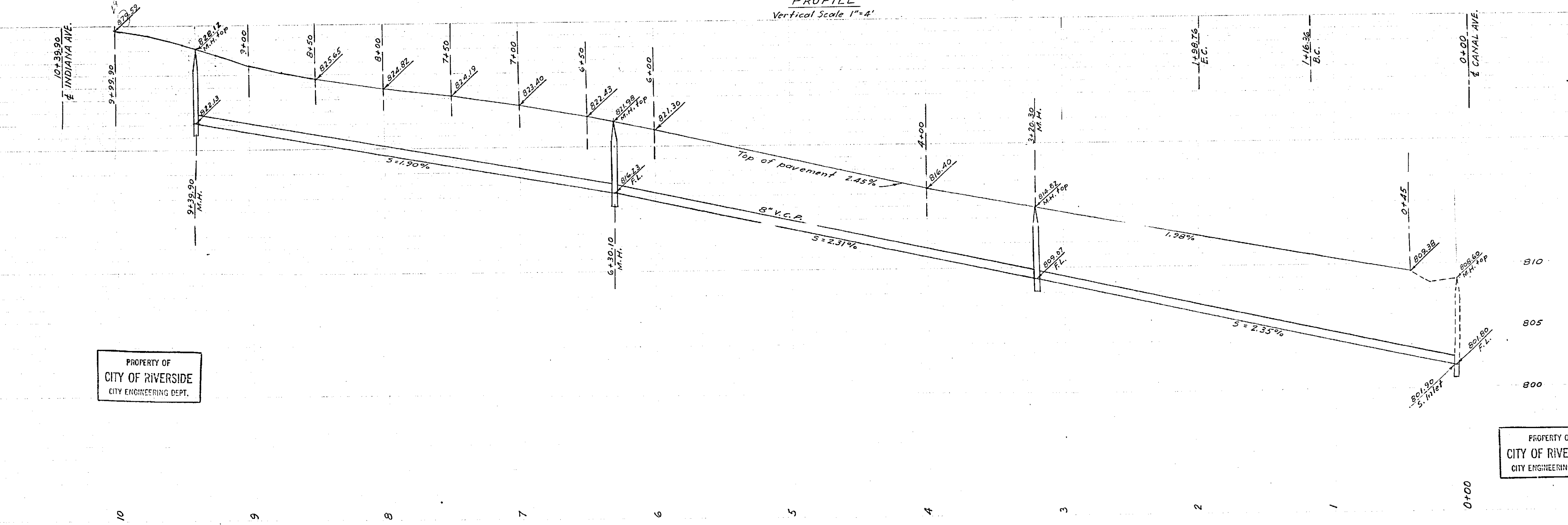
ALBERT A WEBB ASSOCIATES
CIVIL ENGINEERS

SEPTEMBER 1952 SCALE 1"=40'



PLAN
Scale 1"=40'
PROFILE
Vertical Scale 1"=4'

Approved this 24 day of Oct. 1952.
M. H. J. [Signature]
City Engineer, City of Riverside



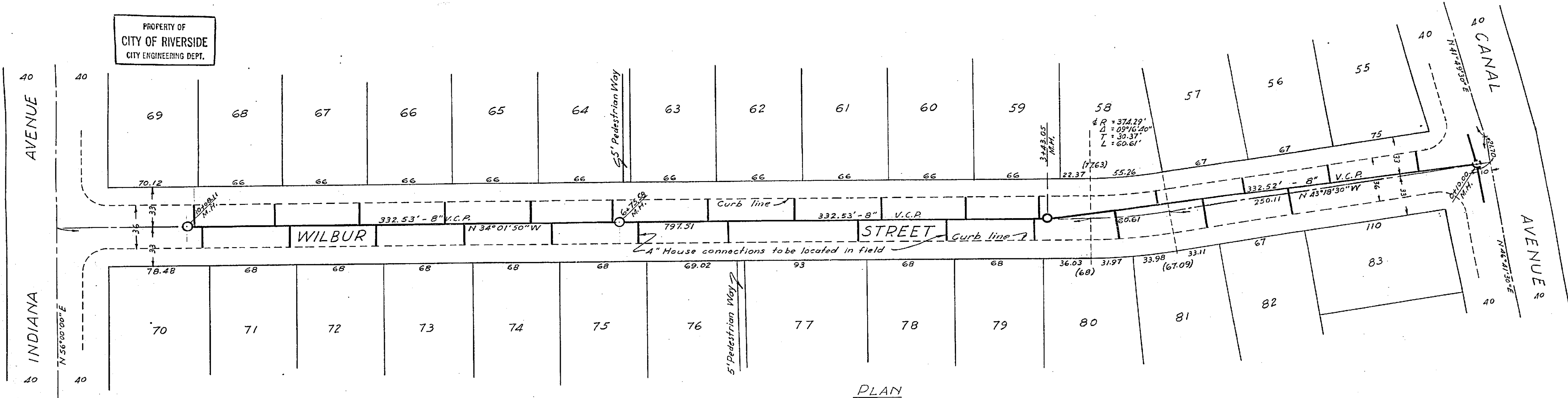
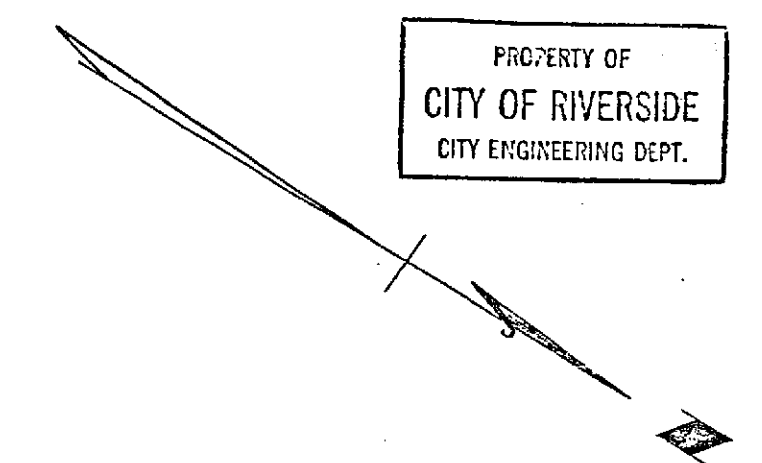
PROPERTY OF
CITY OF RIVERSIDE
CITY ENGINEERING DEPT.

PROPERTY OF
CITY OF RIVERSIDE
CITY ENGINEERING DEPT.

1094A

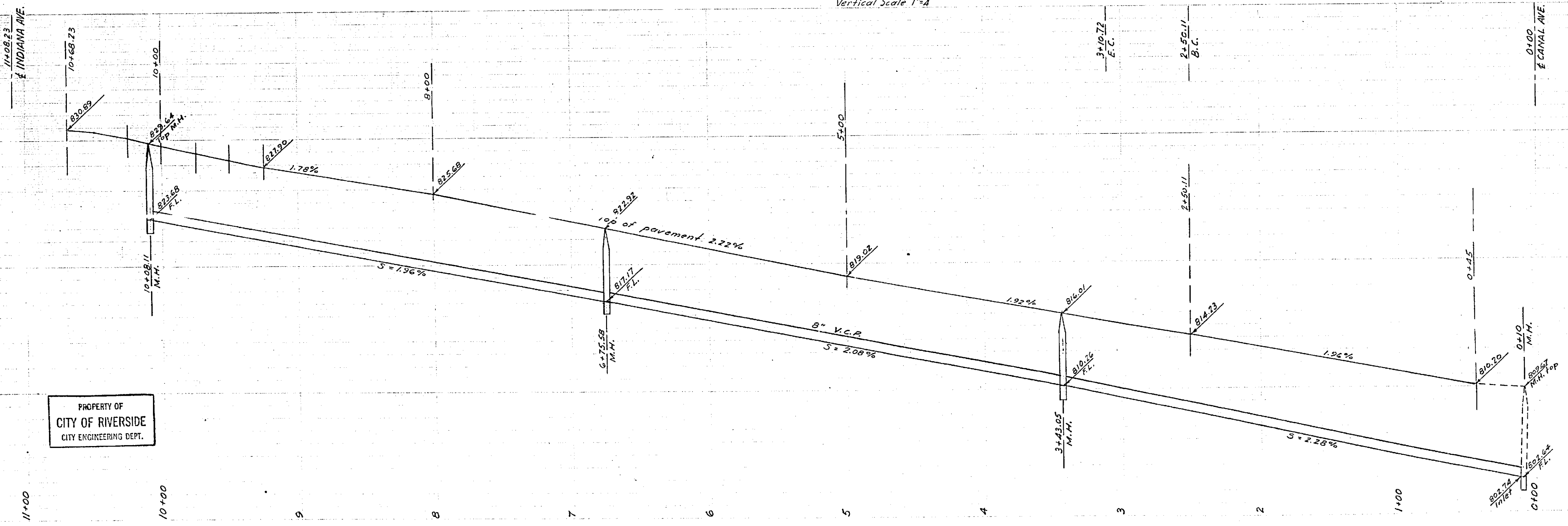
N: 1094-A
 SEWER PLAN AND PROFILE
 OF
 WILBUR STREET
 IN
 ARLINGTON PALMS

ALBERT A. WEBB ASSOCIATES
 CIVIL ENGINEERS
 SEPTEMBER 1952 SCALE 1"=40'



PLAN
 Scale 1"=40'
 PROFILE
 Vertical Scale 1"=4'

Approved this _____ day of _____ 1952.
 M. H. Swine
 City Engineer, City of Riverside



1094A