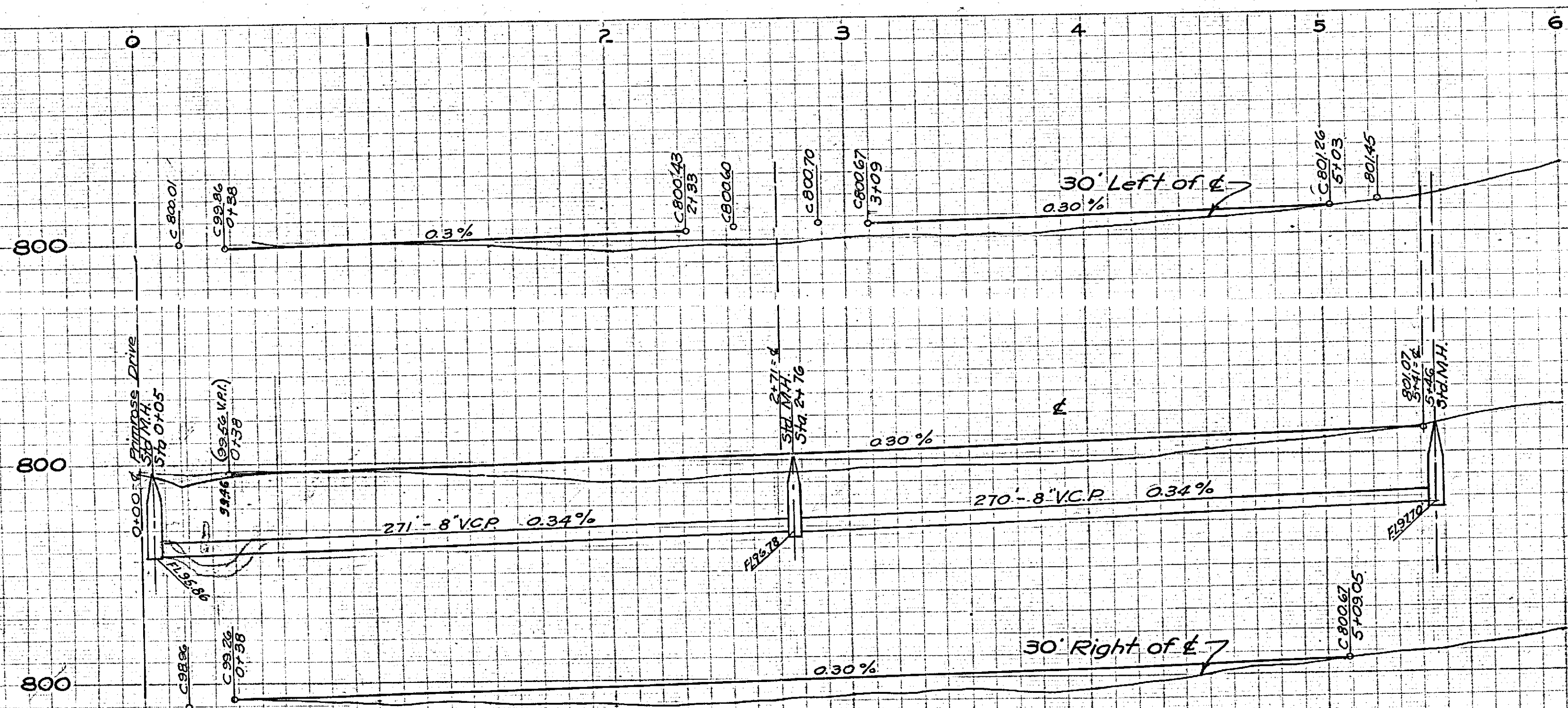
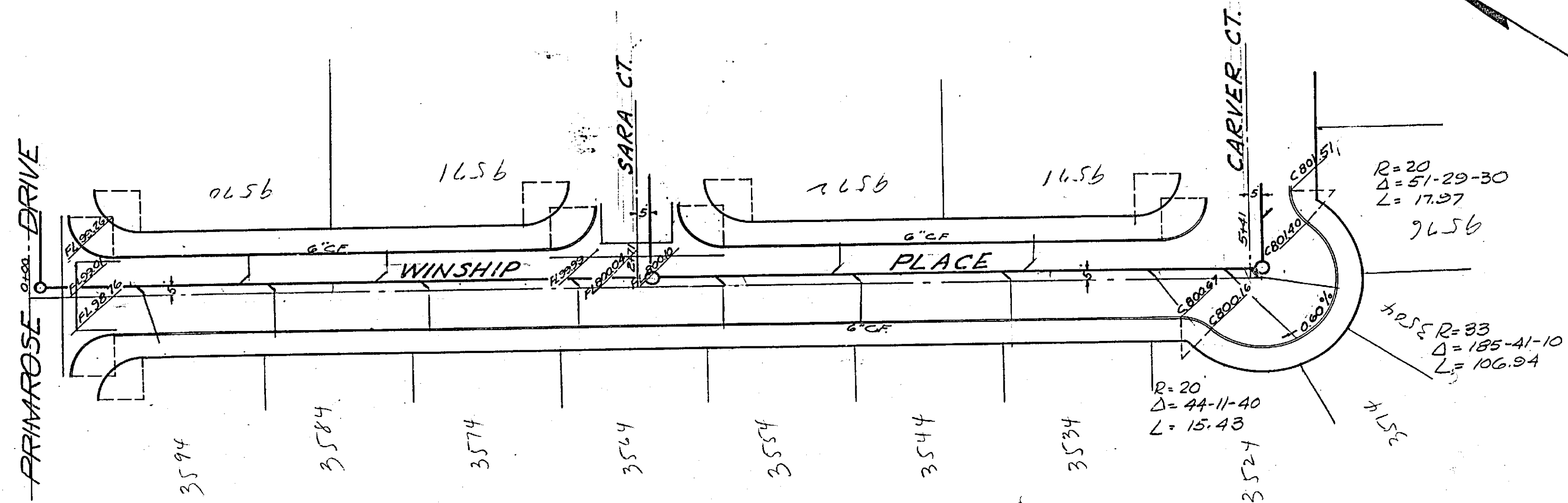


PROPERTY OF
CITY OF RIVERSIDE
CITY ENGINEERING DEPT.

PROPERTY OF
CITY OF RIVERSIDE
CITY ENGINEERING DEPT.



Approved *M. H. Swinn*
City Engineer

No. 1096
Plan & Profile
Arlington Manor
WINSHIP PLACE
February, 1952
Scales: Horiz. 1"=40'
Vert. 1"=4'
J. F. Davidson, C.E.

PROPERTY OF
CITY OF RIVERSIDE
CITY ENGINEERING DEPT.

PROPERTY OF
CITY OF RIVERSIDE
CITY ENGINEERING DEPT.

F.B. 429-25

MADE IN U.S.A.
CLEARPRINT PAPER CO.
CLEARPRINT, PROFILE PAPER PLATE A

MADE IN U.S.A.
CLEARPRINT PAPER CO.
CLEARPRINT, PROFILE PAPER PLATE A

1096

