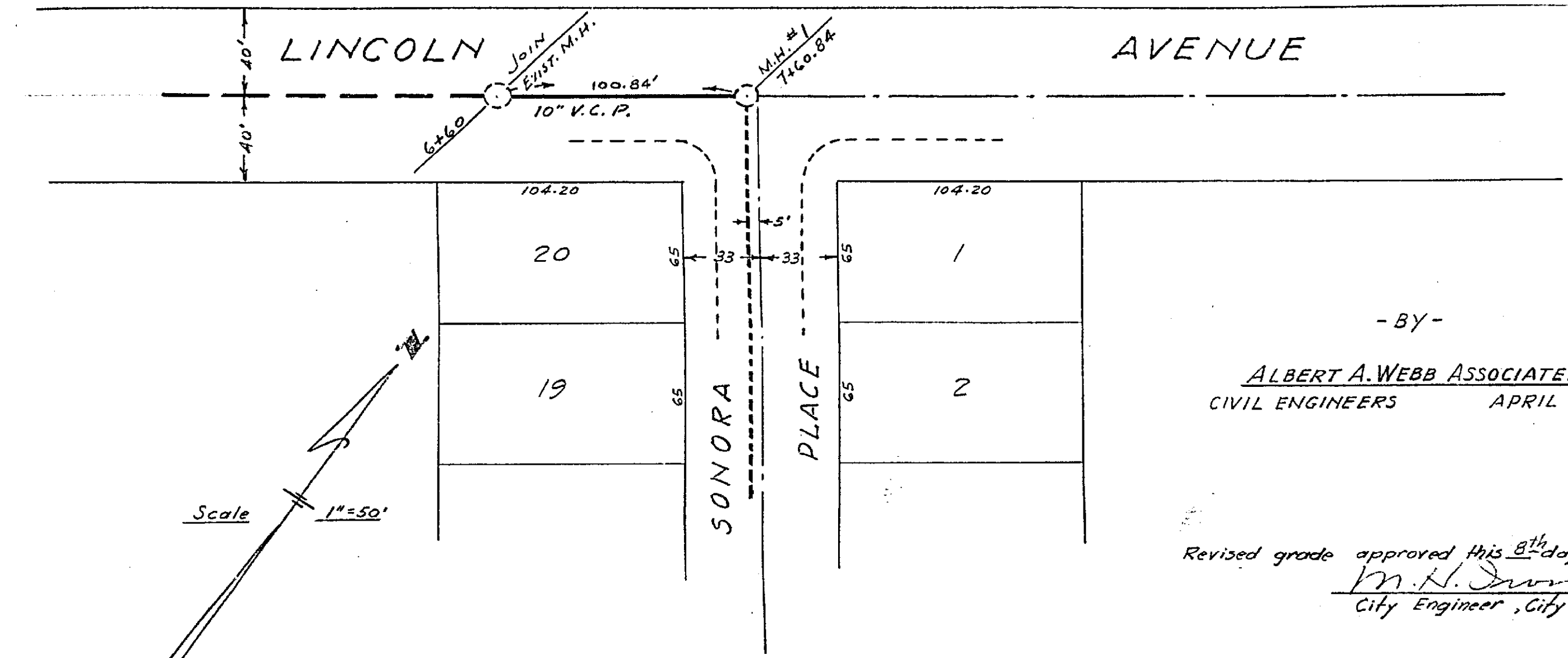
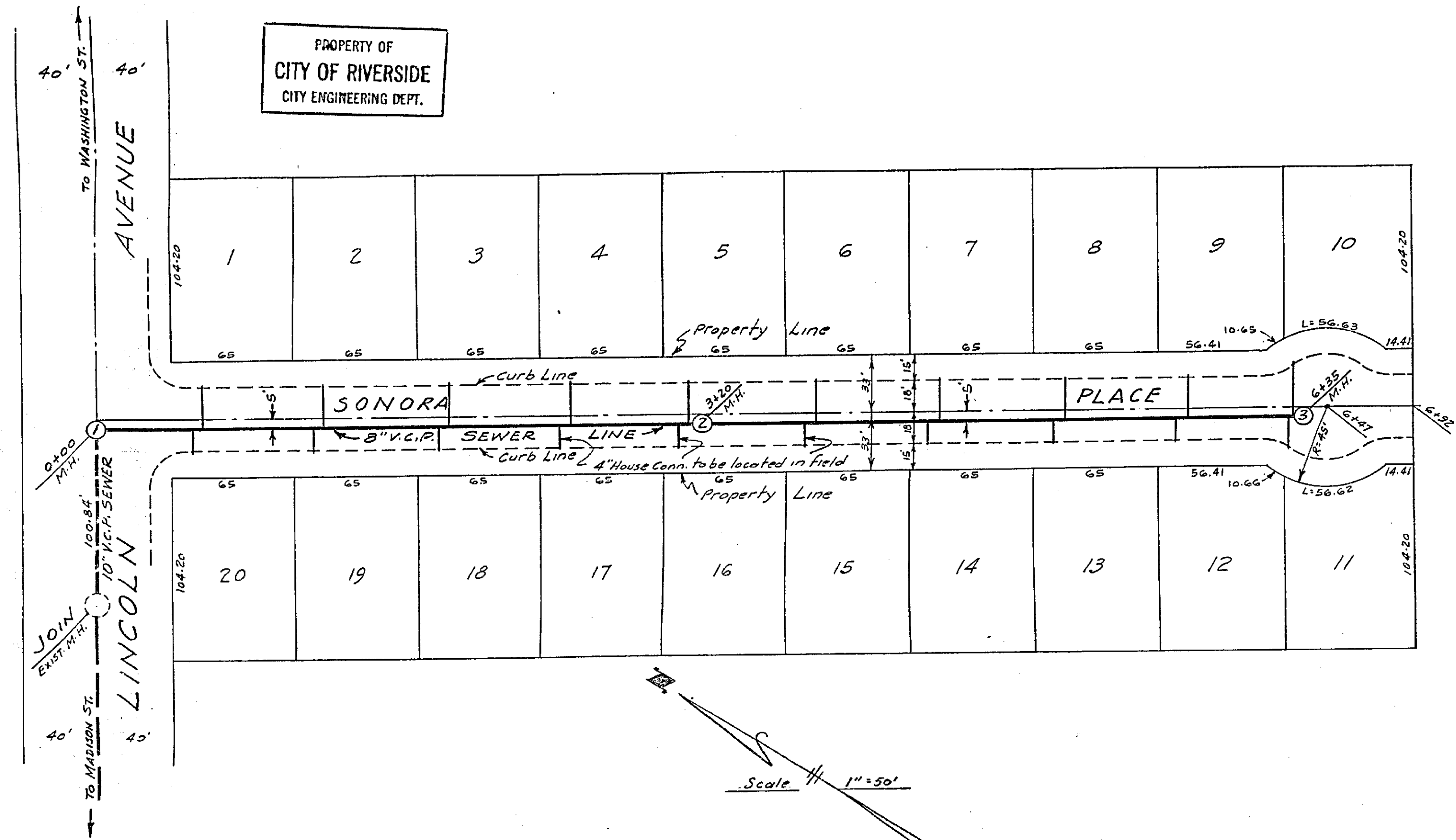


SEWER PLAN AND PROFILE  
 OF  
**LINCOLN AVENUE**  
 AND  
**SONORA PLACE**  
 IN  
 LOS RANCHITOS SUBDIVISION

PROPERTY OF  
 CITY OF RIVERSIDE  
 CITY ENGINEERING DEPT.

PROPERTY OF  
 CITY OF RIVERSIDE  
 CITY ENGINEERING DEPT.

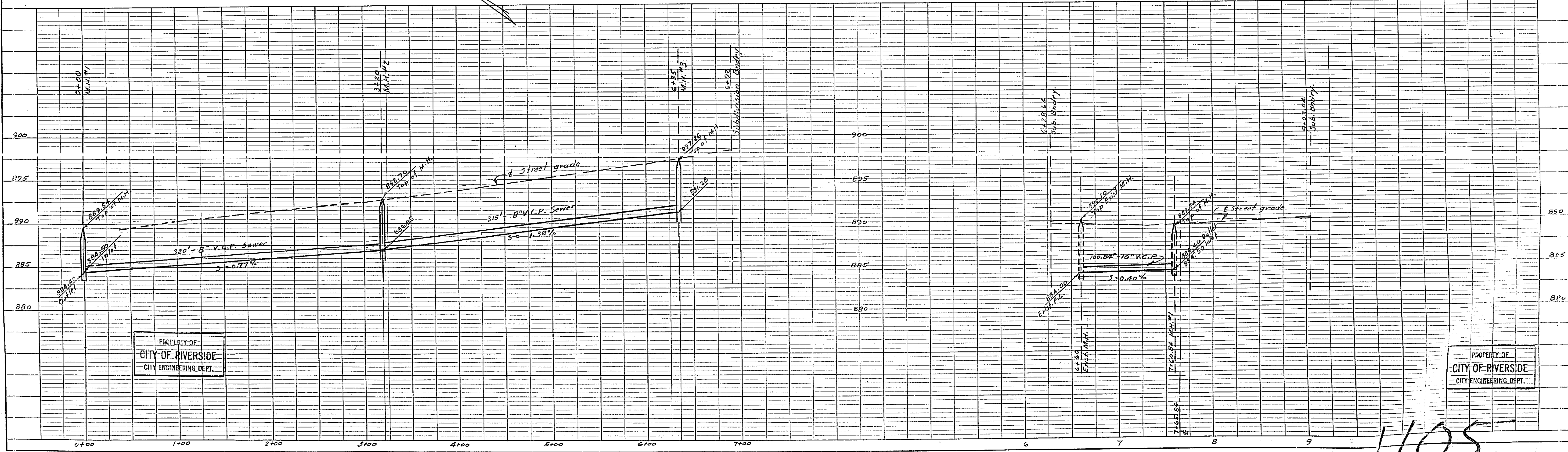


- BY -  
**ALBERT A. WEBB ASSOCIATES**  
 CIVIL ENGINEERS  
 APRIL 1953

Revised grade approved this 8th day of July 1953.  
M. H. Durine  
 City Engineer, City of Riverside

Approved this 11th day of \_\_\_\_\_ 1953.  
M. H. Durine  
 City Engineer, City of Riverside

NOTES:  
 Bench Mark - Sp. # L. N.E. Curb Return of Lincoln Ave. & Madison St. Elev. 893.45  
 Sewer and Manhole construction to be in accordance with City Specifications.



PROPERTY OF  
 CITY OF RIVERSIDE  
 CITY ENGINEERING DEPT.

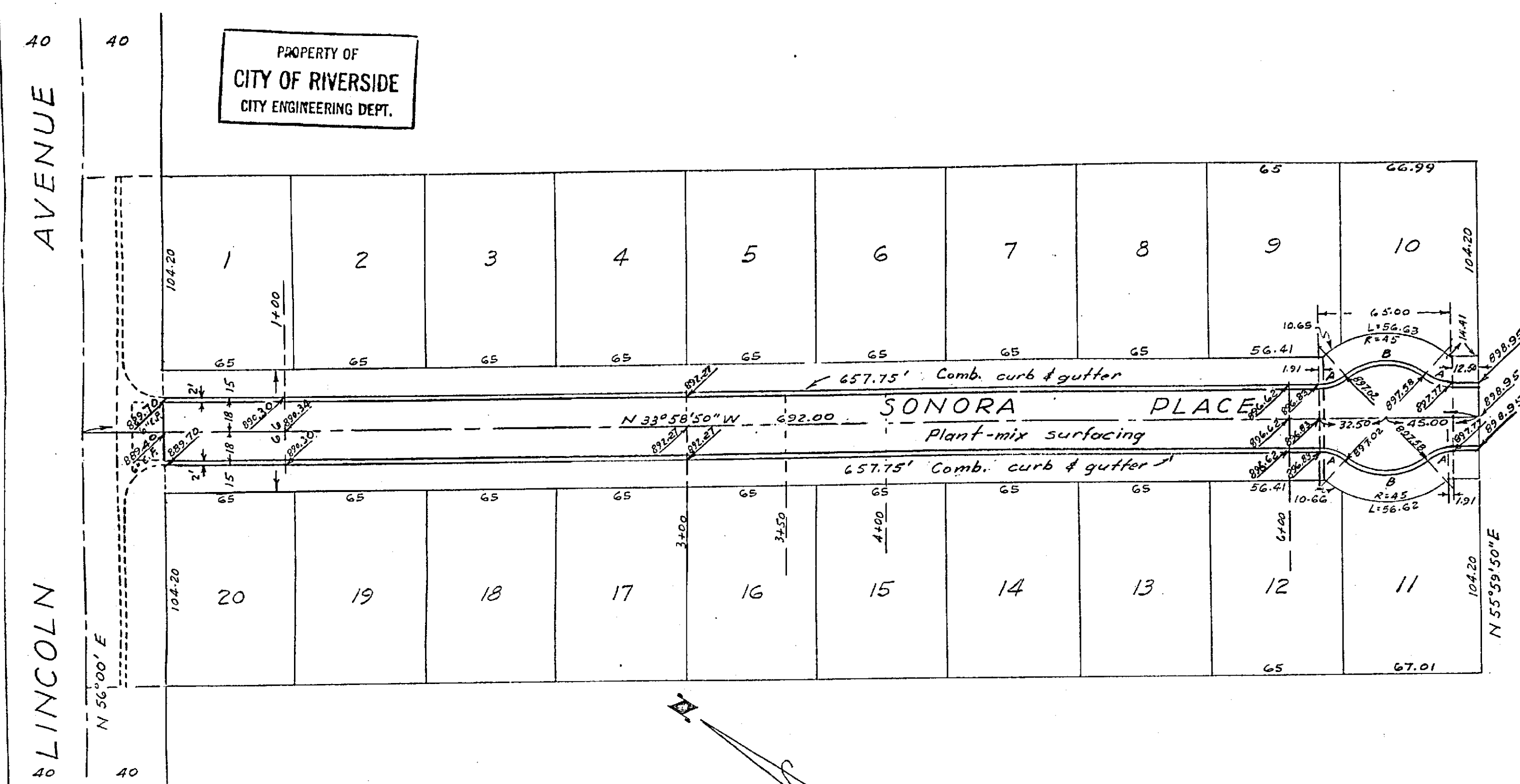
PROPERTY OF  
 CITY OF RIVERSIDE  
 CITY ENGINEERING DEPT.

1105

STREET PLAN AND PROFILE  
OF  
LINCOLN AVENUE  
AND  
SONORA PLACE  
IN  
LOS RANCHITOS SUBDIVISION

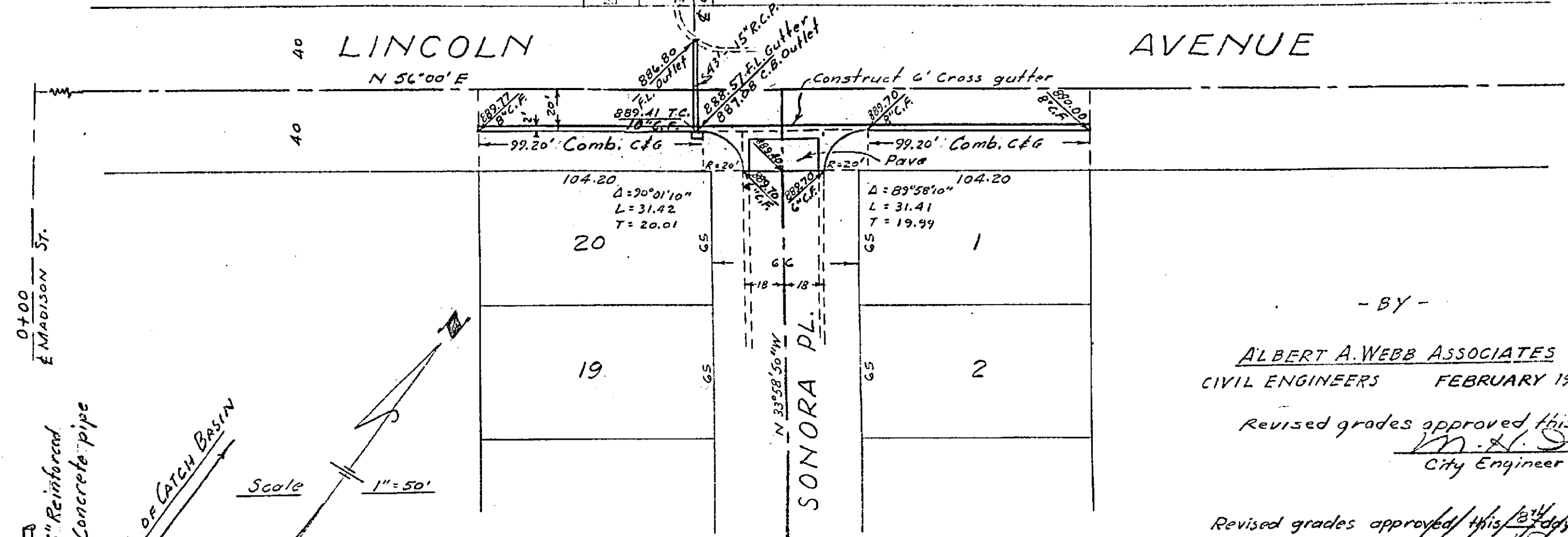
PROPERTY OF  
CITY OF RIVERSIDE,  
CITY ENGINEERING DEPT.

PROPERTY OF  
CITY OF RIVERSIDE  
CITY ENGINEERING DEPT.



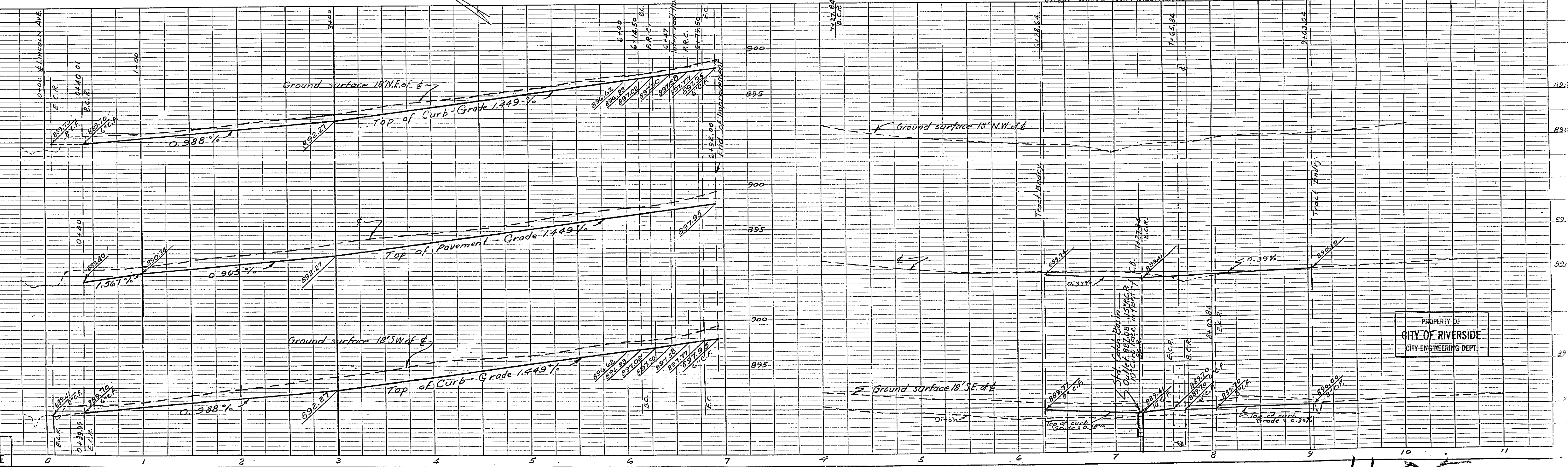
Curb curve A  
R = 20'  
Δ = 10° 32' 10"  
L = 14.15'  
T = 7.35'

Curb curve B  
R = 30'  
Δ = 81° 04' 20"  
L = 42.45'  
T = 25.66'



NOTES:  
Bench Mark - Sp. & L. N.E. Curb Return at Lincoln Ave. & Madison St. Elev. 893.45  
Pavement to be Plant Mix in accordance with City Specifications.  
Combination curb and gutter to be constructed in accordance with City Specifications with 6" curb face and 2" gutter, except where otherwise noted.

- BY -  
ALBERT A. WEBB ASSOCIATES  
CIVIL ENGINEERS FEBRUARY 1954  
Revised grades approved this 11 day of Feb. 1954  
M. H. Swaine  
City Engineer, City of Riverside  
Revised grades approved this 23 day of Feb. 1954  
M. H. Swaine  
City Engineer, City of Riverside  
Approved this 11 day of Feb. 1954  
M. H. Swaine  
City Engineer, City of Riverside



PROPERTY OF  
CITY OF RIVERSIDE  
CITY ENGINEERING DEPT.

1105